

NOTES:

155 DRUMMOND STREET

LIGHTWEIGHT NEW BUILD OVER TIMBER FRAME. RAINSCREEN CLADDING. SOLAR GLAZING.

ADV - STAIR VENT GRILL

CONC. + MASONRY PLINTH - RETAINED. REINFORCED TO STRUCT. ENG. SPEC.

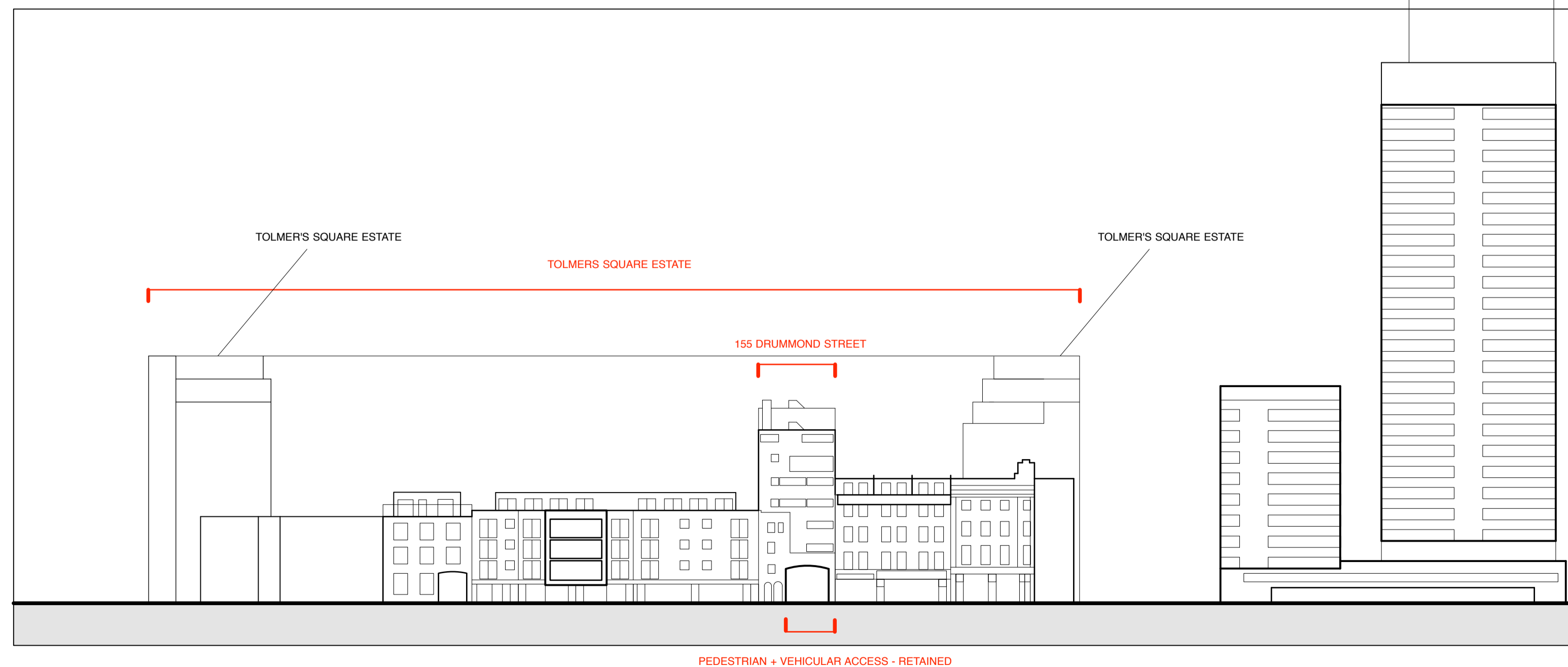
LINE OF JUNCTION OF PARTY WALL 153-155 DRUMMOND STREET.

LINE OF JUNCTION OF PARTY WALL 155-159 DRUMMOND STREET.

**Proposed - FRONT ELEVATION. 1:100.**



**Concrete + brickwork podium - to be retained.**

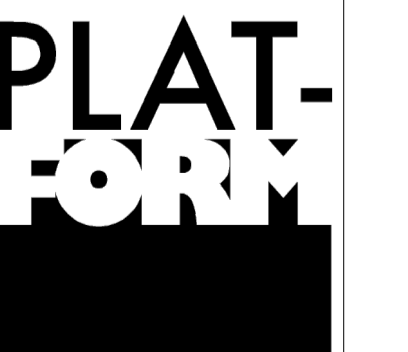


**Tolmer's Square Estate. Proposed Drummond Street elevation. 1:500.**

REV.NOTES:

**PLANNING APPLICATION ISSUE:**

PROJECT	
155 DRUMMOND STREET LONDON NW1 2FB	
JOB NO	DATE
15.66	15.03.2019
DWG NO	REV
P.21	-
TITLE	
PROPOSED: FRONT ELEVATION	
SCALE	
1:100 @ A1	



PLAT-FORM ARCHITECTURE, WINKLEY STREET STUDIOS, UNIT 3, 7 WINKLEY STREET, LONDON, E2 2PF. T : 07435 974 233 E : studio@plat-form.co.uk © plat-form