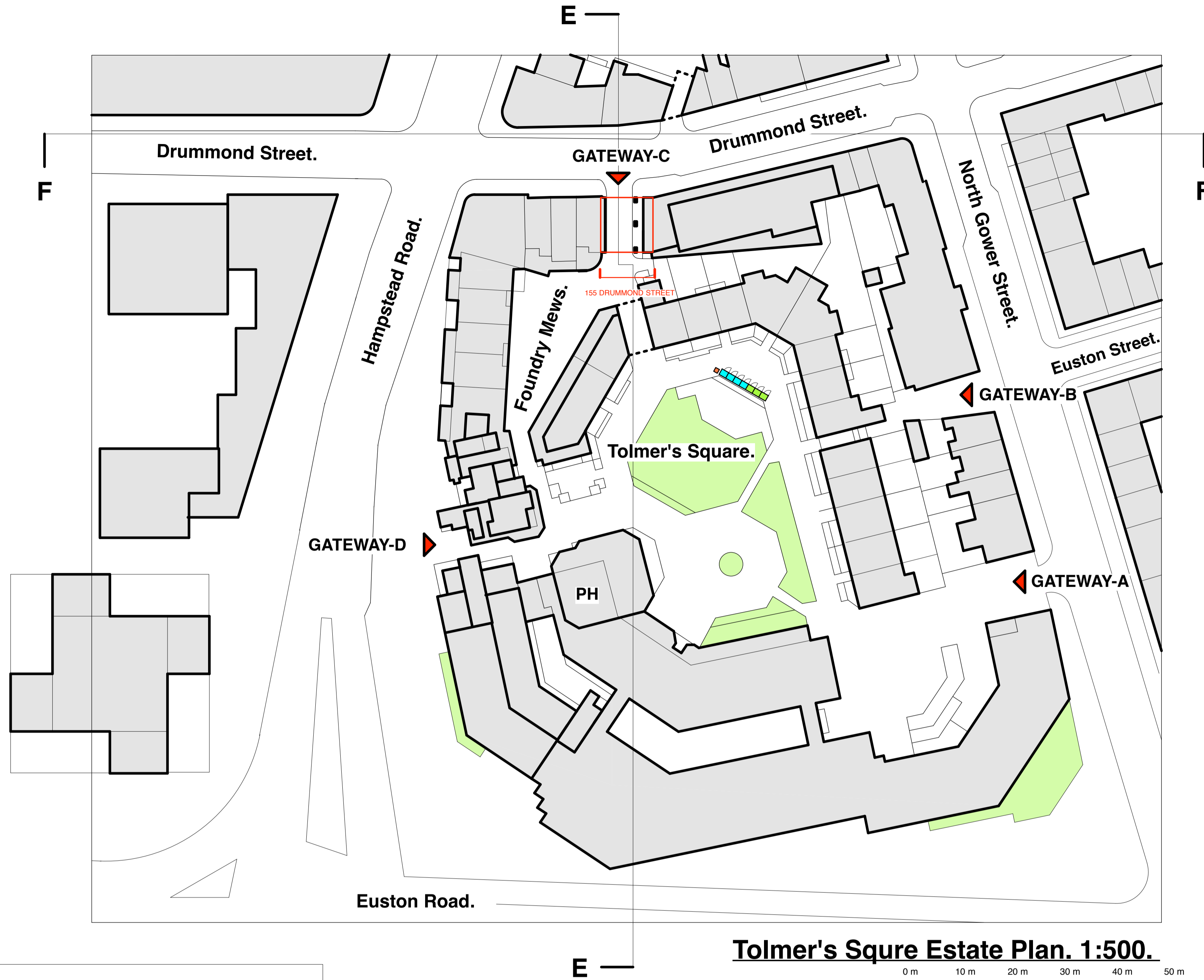




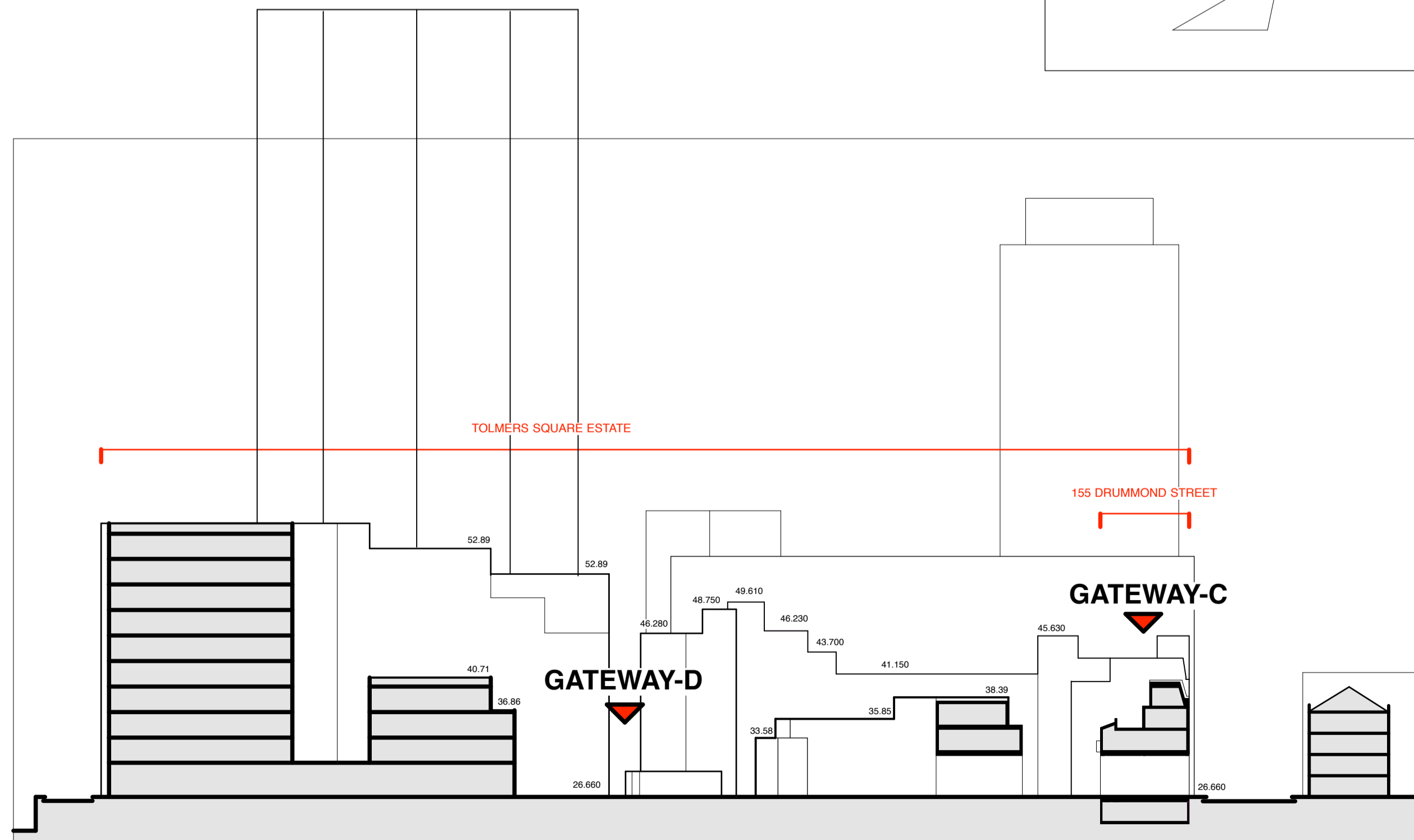
**Gateway - A.**  
View from North Gower Street showing vehicular & pedestrian access.



**Gateway - B.**  
View from North Gower Street showing pedestrian access.



**Tolmer's Square Estate Plan. 1:500.**



**Tolmer's Square Estate. Section E-E. 1:500.**



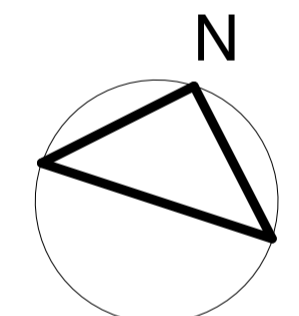
**Gateway - C.**  
View from Drummond Street showing vehicular & pedestrian access.



**Gateway - D.**  
View from Hampstead Road showing pedestrian access.

NOTES:

REV.NOTES:



**PLANNING APPLICATION ISSUE:**

PROJECT	
155 DRUMMOND STREET LONDON NW1 2FB	
JOB NO	DATE
15.66	15.03.2019
DWG NO	REV
P.01	-
TITLE	
TOLMER'S SQUARE ESTATE PLAN + SECTION.	
SCALE	
1:500 @ A1	

**PLAT-FORM**

PLAT-FORM ARCHITECTURE,  
WINKLEY STREET STUDIOS,  
UNIT 3, 7 WINKLEY STREET,  
LONDON, E2 2PF.  
T : 07435 974 233  
E : studio@plat-form.co.uk  
© plat-form