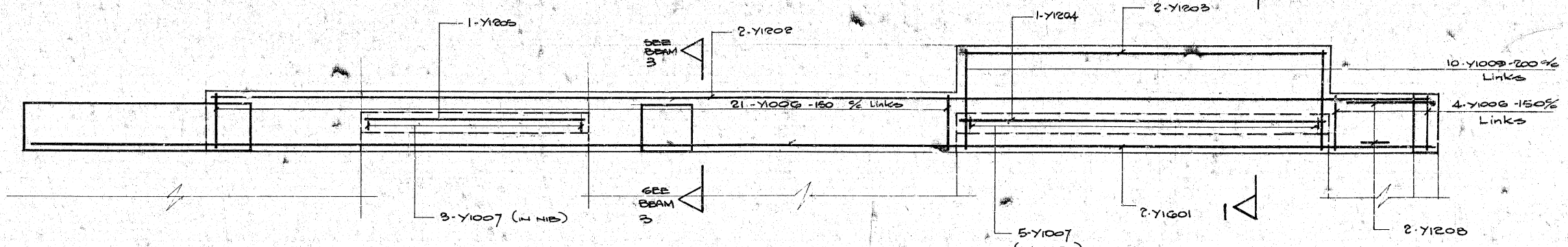
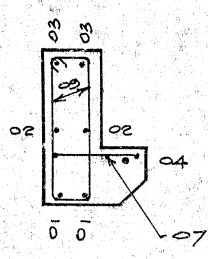
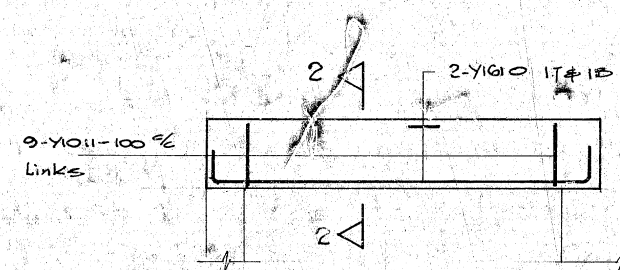


| | | | | | |
|--|--|---|------------------------------|--|---|
| 1. Concrete to be grade 30 min at 28 days 2. Maximum aggregate size to be 20 3. Unless noted cover to steel 40 to main bars 4. For location see Drg. Neg. 4.1.7A 5. Bundling schedules pages 1-3 6. AB Alternately Staggered B Bottom NF Near Face AR Alternately Reversed T Top FF Far Face AP Alternately Placed TT Top Top | | FOR DETAILS OF FIRST FLOOR SLAB SEE DRG. ROGG | DETAILS OF FIRST FLOOR BEAMS | TOLMERS SQUARE SITE IX AND IY | OVE ARUP & PARTNERS REINFORCEMENT Job No. 6206/17 Scale 1:25 = 1:20 Dwg. No. R Rev. 0070 Date 12.5.1974 |
|--|--|---|------------------------------|--|---|



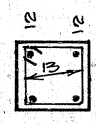
BEAM 1

1-1

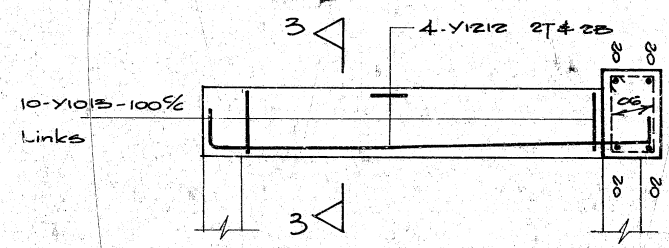


BEAM 2

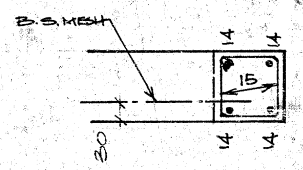
2-2



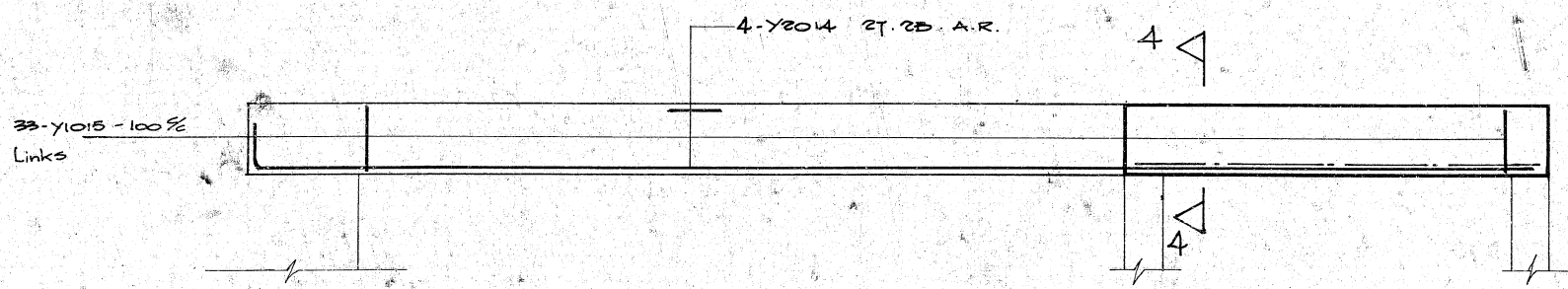
3-3



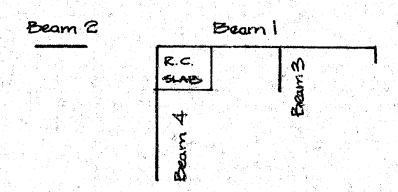
BEAM 3



4-4



BEAM 4



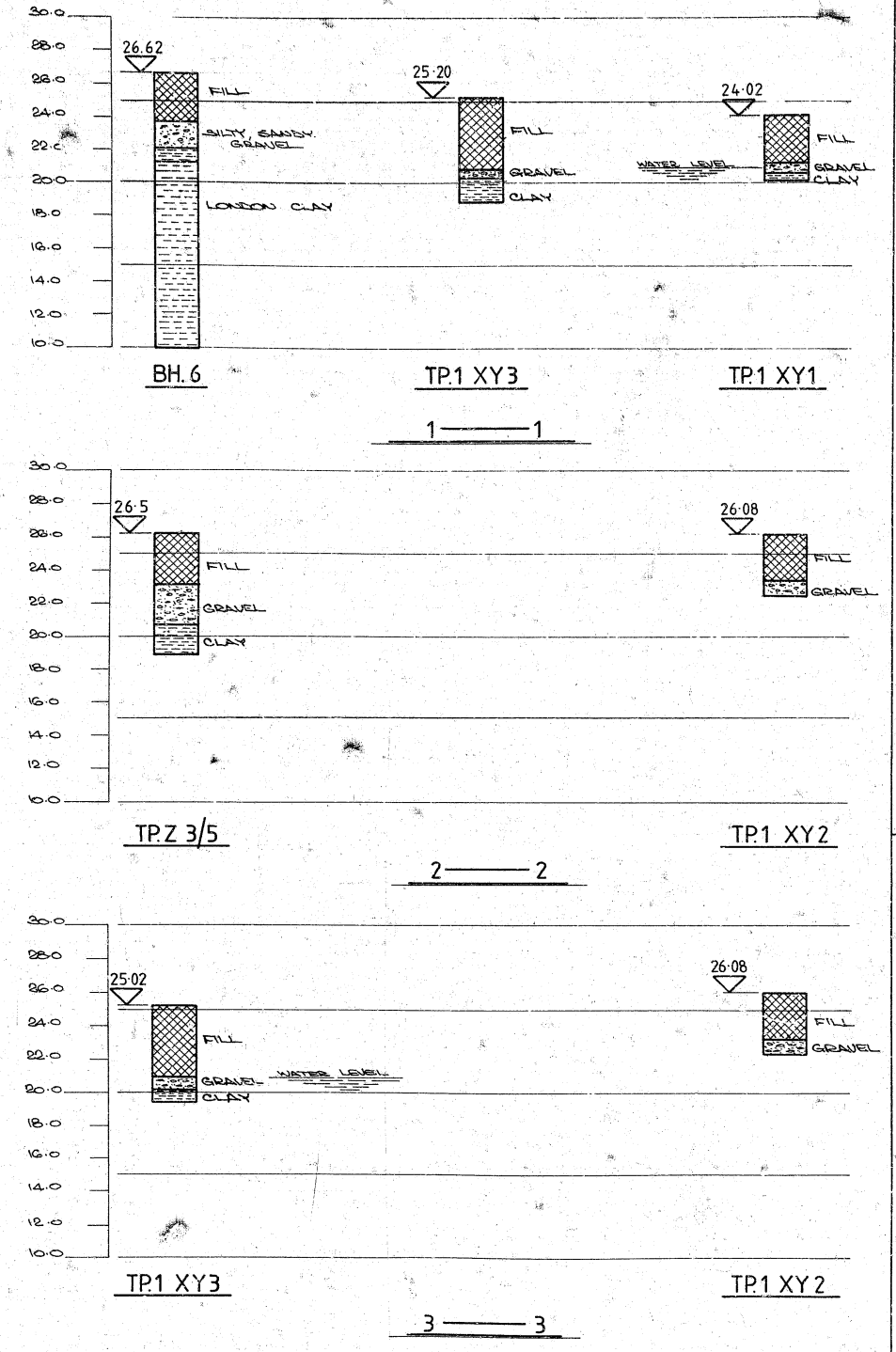
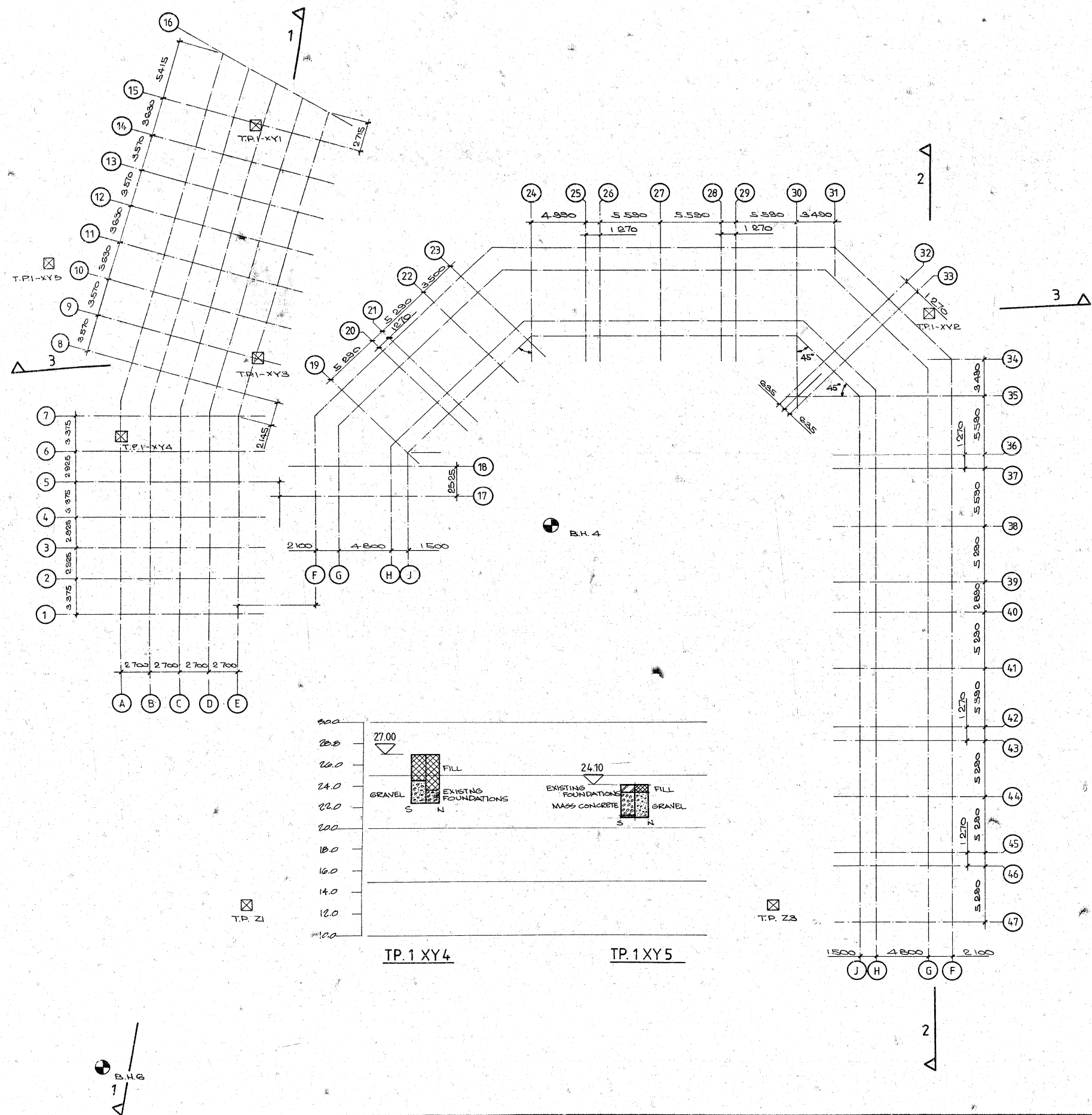
KEY PLAN

- NOTES**
- Concrete to be grade 30
 - Minimum cover to steel to be 20mm.

TOLMERS SQUARE
SITE IX & IY
SECTOR 7-LEVEL 3
REINFORCEMENT DETAILS

OVE ARUP & PARTNERS
Job No. 5005/17
Drawing No. R/7.31
Date 11/05
Scale 1:10

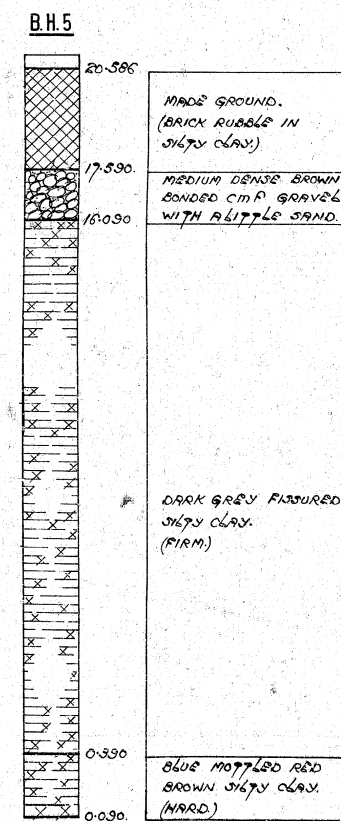
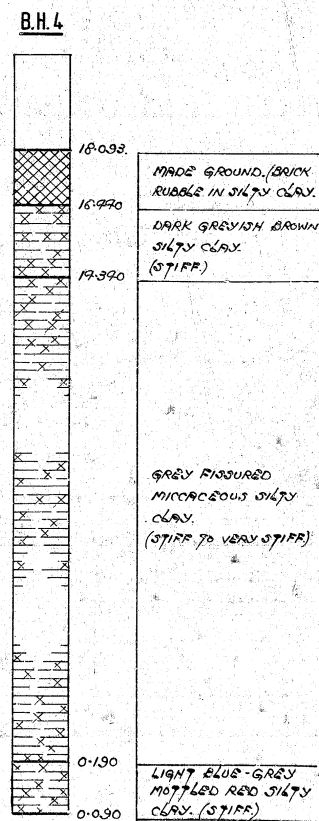
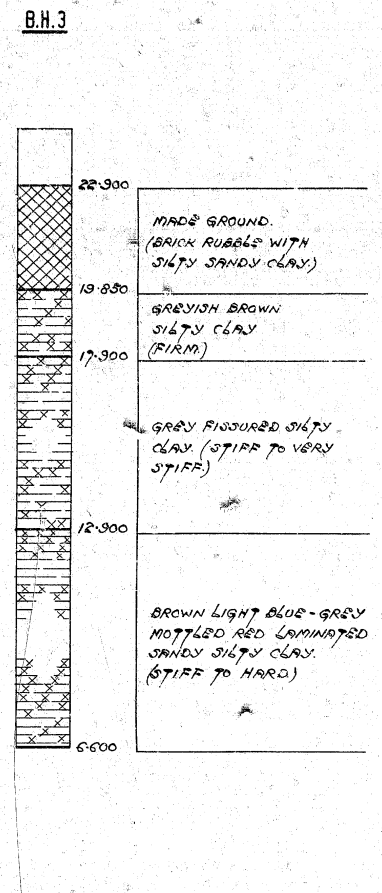
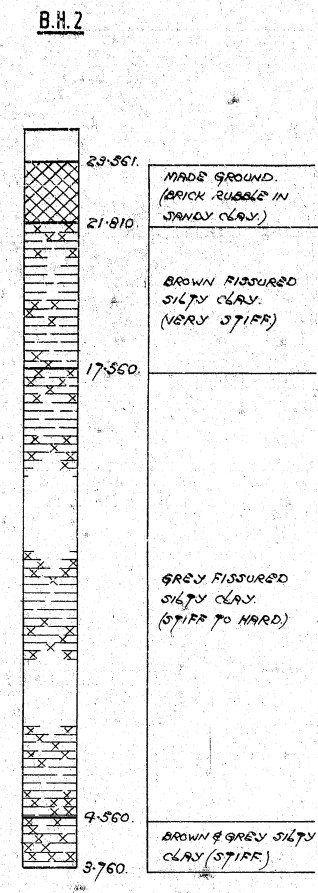
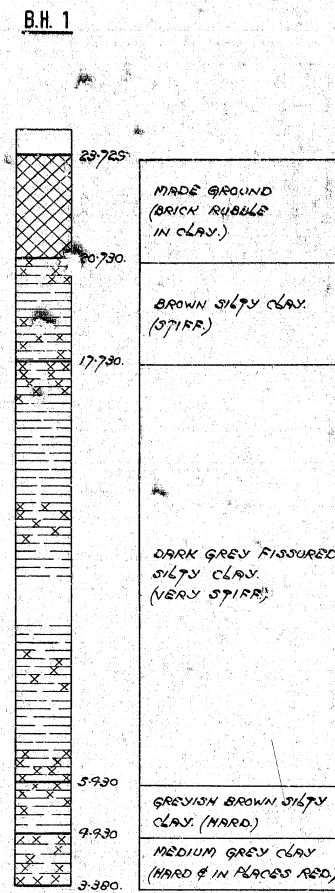
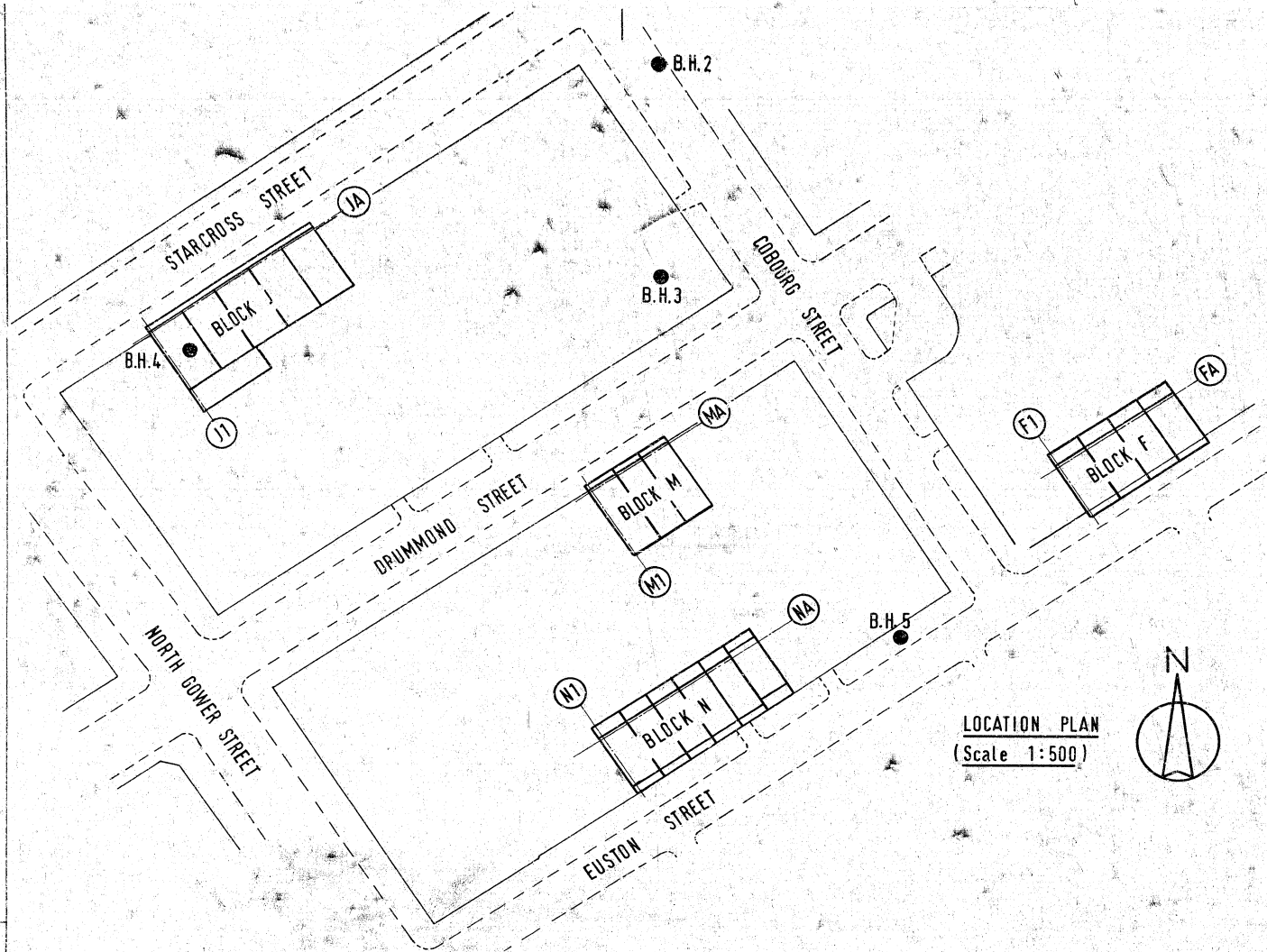
| Mark | Date | By | Rev |
|------|------|----|-----|
| | | | |
| | | | |
| | | | |



| | | | |
|-----|-----|----------|--------------------|
| Rev | By | Date | Desc |
| 1 | PCB | 15/11/93 | TP.1 XY4 & 5 ADDED |
| 2 | PCB | 15/11/93 | B.H. 4 AMENDED |

| | | | |
|--|------------|----------------------|-------|
| TOLMERS SQUARE REDEVELOPMENT SITE 1X & 1Y SITE LAYOUT & BOREHOLE LOGS | | OVE ARUP & PARTNER'S | |
| Job No | Drawing No | Rev | |
| 5965 17 | M. 1. | B | |
| Scale | Date | Chk | Passd |
| 1:200 | NOV 1993 | | |

25 26 27 28 29 30 31 32 33 34 35 36 37 38 39 40 41 42 43 44 45 46 47 48 49 50 51 52 53 54 55 56 57 58 59 60 61 62 63 64 65 66 67 68 69 70 71 72 73 74 75 76 77 78 79 80 81 82 83 84
 A1/A3 A3/A2 A2/A1
 AARQUE SYSTEMS LIMITED Tel: 01 263 9041
 A1/A1



| | | | | | |
|--|--|--|--|--|--|
| | | | | | |
| | | | | | |
| | | | | | |
| | | | | | |

| | | | |
|-------------------------------------|--|--------------------------------|----------------------------|
| TOLMERS SQUARE REDEVELOPMENT | | OVE ARUP & PARTNERS | |
| SITE INVESTIGATION | | Job No. 5965 | Draw No. M 2 |
| Scale: DIAGRAMMATIC | | Drawn: R. BROWN | Checked: M. H. [Signature] |

MICROBOX



24 25 26 27 28 29 30 31 32 33 34 35 36 37 38 39 40 41 42 43 44 45 46 47 48 49 50 51 52 53 54 55 56 57 58 59 60 61 62 63 64 65 66 67 68 69 70 71 72 73 74 75 76 77 78 79 80 81 82 83 84
 A4A3
 A3A2
 A2A1
 A1