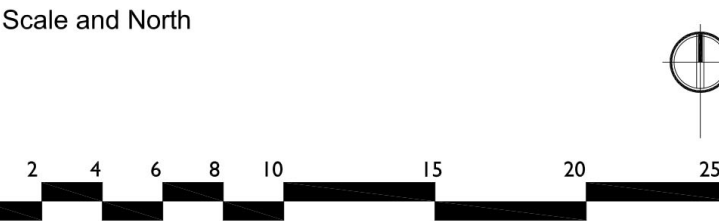


NOTES:
All dimensions must be checked on site and not scaled from this drawing.
All cross references are to the latest revision of the relevant drawing or specification being referenced.

- Portal Entrance- See Jestico and Whiles images
- Boundary with Clarendon Grove 2.4m high weldmesh
- 3.0m weldmesh Ballstop fence
- Retained boundary between Convent and Primary School- retaining wall and balustrade
- New boundary with Primary School
- Existing party wall boundaries retained
- New wall and gates

P00 25.03.19	Xref Updated	AG	JL
T06 30.06.16	Xref Updated	LN	JL
T05 14.06.16	Xref Updated	PR	JL
T04 31.05.16	Xref Updated	TJ	JL
T03 29.01.16	Xref Updated	TJ	JL
T02 29.01.16	Xref Updated	LD	JL
T01 14/12/15	Add Title Block	LD	JL
Rev	Date	Revisions	Drawn
Rev	Date	Revisions	Checked



© copyright
wynne-williams associates ltd
2 Threshelfords Business Park
Inworth Road
Feering
CO5 9SE
Tel 01376 573050
landscape@w-wa.co.uk
www.wa.co.uk

Client
Kier London

Job Title
Maria Fidelis

Drawing Title
Boundary Plan

Issue
PLANNING

Scale
1:250@A1

Date 31/05/2016	Drawn LD/PR
Date 31/05/2016	Checked JL

Drawing Number WWA_1566_Sk_002	Rev P00
--	-------------------