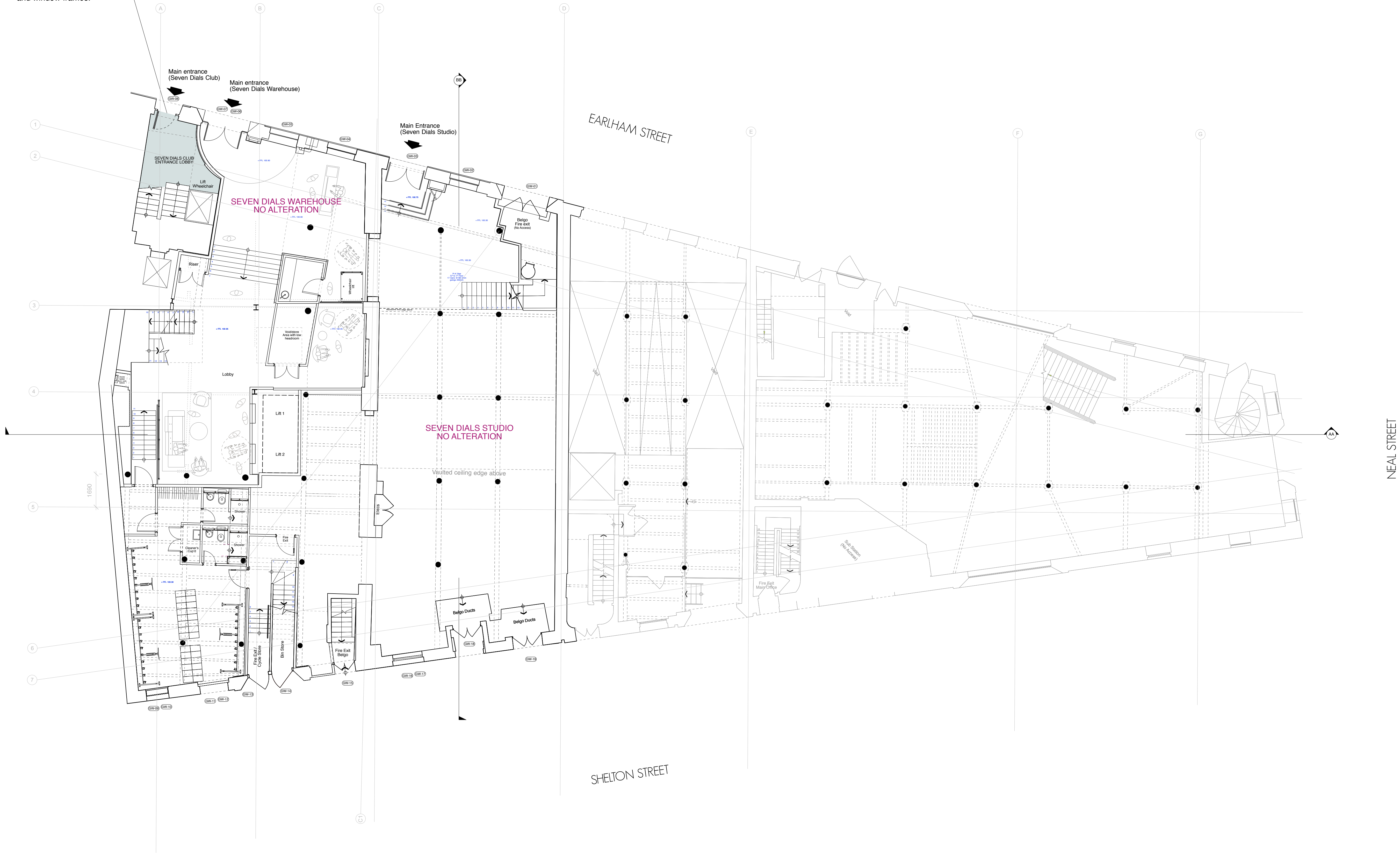


PROPOSED DOOR SPECIFICATION

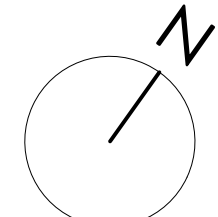
Proposed steel frame single swing door with double glazed panes to existing opening of main entrance to Seven Dials Club. Door flat steel pull handles to be provided to either side of door in colour to match frame.

Door and frame to be finished in Graphite Black Matt (RAL 9011) with 10% sheen to match all existing door and window frames.

Alterations To Facade
624-PL-10



PROPOSED GROUND FLOOR PLAN



0 1 2 3 4 5 10

PLANNING

© gpad london ltd.

PROJECT				SEVEN DIALS WAREHOUSE LONDON WC2				DRAWING TITLE				PROPOSED GROUND FLOOR PLAN									
CLIENT				CBRE c/o ASSET SERVICES UK				<div><div>gpad</div><div>architecture & interior design</div></div> <div><div>T: 020 7549 2133</div><div>E: info@gpadlondonltd.com</div><div>W: www.gpadlondonltd.com</div></div> <div><div>2nd Floor</div><div>130 Old Street</div><div>London EC1V 9BD</div></div>													
SCALE		1:100 @ A1		DATE		JAN 19										DWG BY		SF		REV.	
CHKD.		DWG NO.		624-PL-08																	