



BELGO RESTAURANT
Fire exit
(No Change)

44 EARLHAM STREET
Studio B1 Office
(No Change)

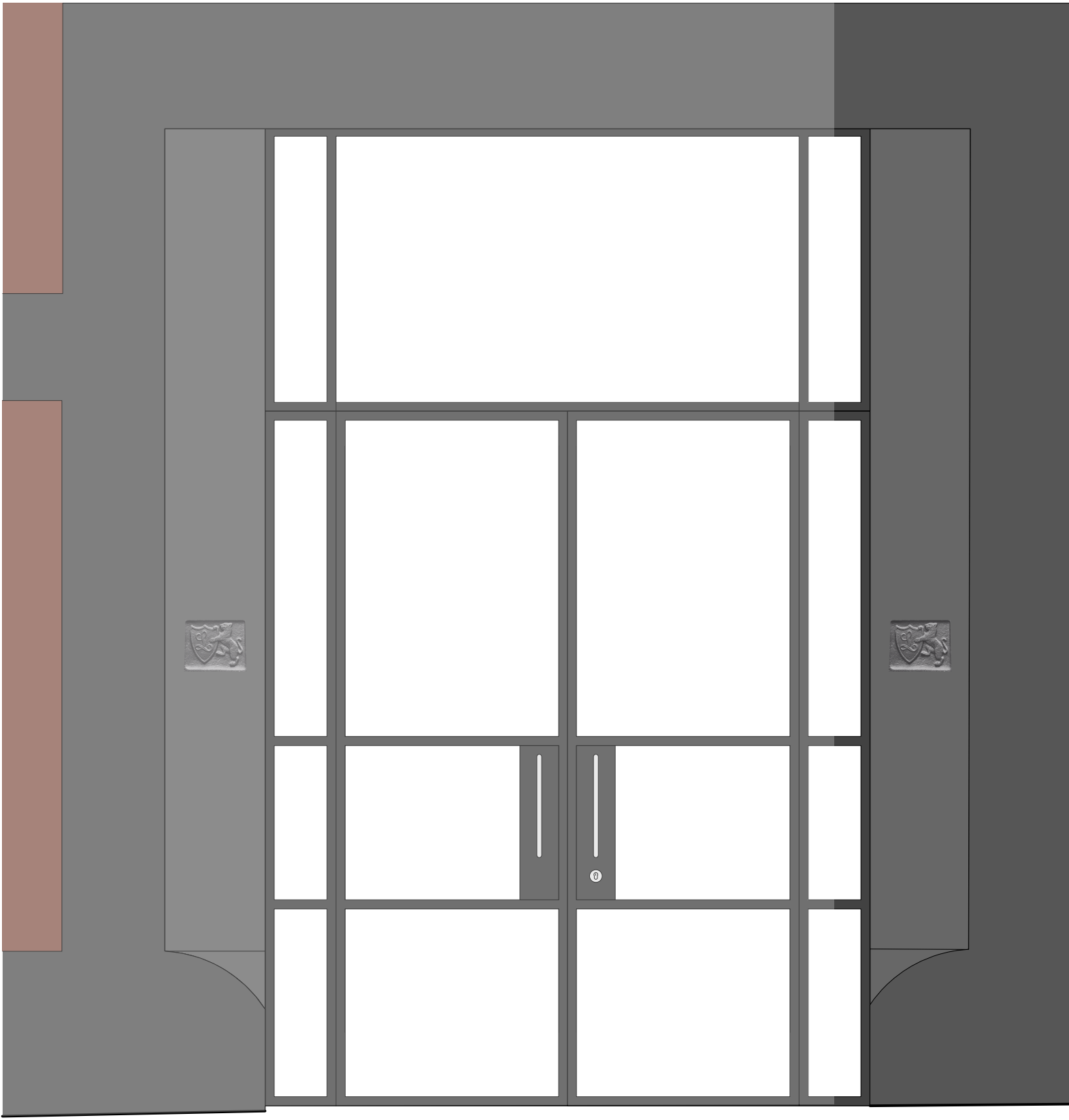
42 EARLHAM STREET
Warehouse B1 Office
(No Change)

SEVEN DIALS CLUB
Entrance

EARLHAM STREET ENTRANCE ELEVATION
(Scale 1:50)

KEY

1. Original brick facade.
2. Existing stone frieze to be retained in Graphite Black Matt (RAL 9011).
3. Existing stone plinth to be retained in Graphite Black Matt (RAL 9011).
4. Existing projecting metal framed signs, internally illuminated (only letters illuminated) above the main entrance doors retained.
5. Proposed single swing steel frame double glazed door to be finished in Graphite Black Matt (RAL 9011) with 10% sheen to match all existing door and window frames. Fanlight above door to be replaced to match door finish.



PROPOSED DOOR SPECIFICATION

Proposed steel frame single swing door with double glazed panes to existing opening of main entrance to Seven Dials Club. Door flat steel pull handles to be provided to either side of door in colour to match frame.

Door and frame to be finished in Graphite Black Matt (RAL 9011) with 10% sheen to match all existing door and window frames. Fanlight above door to be finished to match door.

Hardware:
Automatic door gearing for single swing inward opening door, 2 x deadlocks and euro profile cylinders to match existing, 1 x pair of standard door push pad openers, double ramped threshold for accessibility and single swing door automation package.

Automated door to be linked to building management access control and entry system in accordance with M&E Engineer's specifications

ENTRANCE DOOR ELEVATION DETAIL
(Scale 1:20)

Existing entrance frieze to be retained.
Finished in Matt black (RAL 9011),
external grade masonry paint

Suspended ceiling

Existing fanlight
to be left in-situ

Proposed steel frame double
glazed single swing door to be
finished in Graphite Black Matt
(RAL 9011) with 10% sheen.

Existing stone plinth to be retained.
Finished in Graphite Black Matt
(RAL 9011), external grade masonry
paint.

Earlham Street

Earlham Street

Earlham Street

Earlham Street

Earlham Street

Earlham Street

Earlham Street

Earlham Street

Earlham Street

ENTRANCE DOOR SECTION DETAIL
(Scale 1:20)

Existing metal framed, projecting internally
illuminated sign. Frame finish: Powder
coated in graphite black RAL 9011.

770

SEVEN CLUB DIALS

3645

2547

150

688

150

1040

150

357

150

150

150

150

150

150

150

PROPOSED EARLHAM STREET ENTRANCE FACADE ALTERATIONS



PLANNING

<div>The drawing is the copyright of gpod london ltd. Not to be reproduced, related or disclosed to any unauthorised person either whole or in part without written permission. Do not scale of this drawing. All indicated dimensions to be checked and verified on site by the contractor before commencement of any fabrication drawings or work whatsoever on site. Report any discrepancies to the Architect immediately. Drawings to be read in conjunction with relevant drawings and specification.</div>	rev.	date	notes	PROJECT SEVEN DIALS WAREHOUSE LONDON WC2				DRAWING TITLE PROPOSED EARLHAM STREET ENTRANCE FACADE ALTERATIONS			
	A	28.02.18	Notes omitted	CLIENT CBRE c/o ASSET SERVICES UK				<div>gpod architecture & interior design</div> <div>T: 020 7549 2133 E: info@gpadlondonltd.com W: www.gpadlondonltd.com</div> <div>2nd Floor 130 Old Street London EC1V 9BD</div>			
	SCALE	1:50 & 1:20 @ A1	DATE	JAN 19	DWG BY	SF	REV.				
	CHORD.	DWG NO.	624-PL-10				A				

© gpod london ltd.