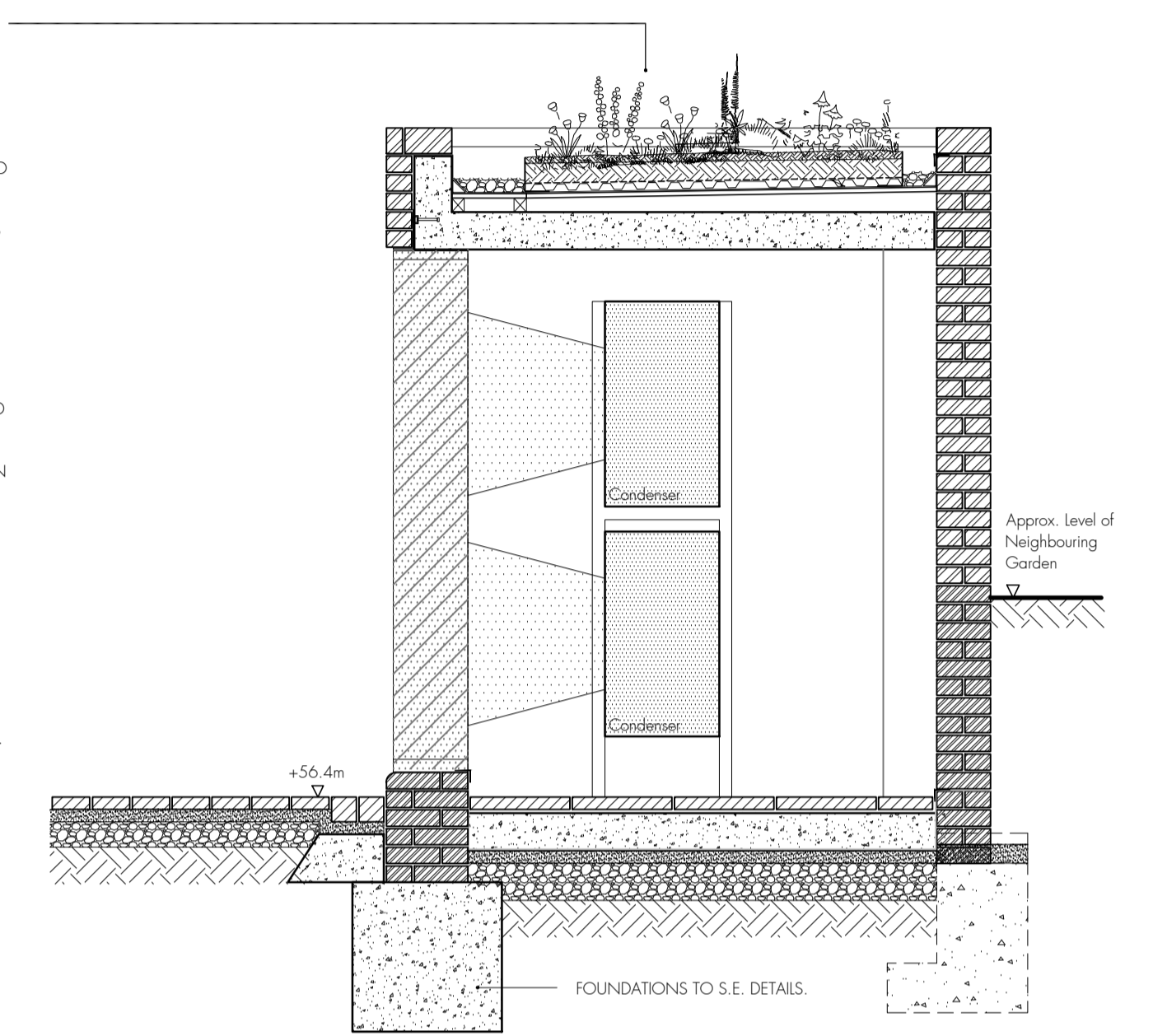
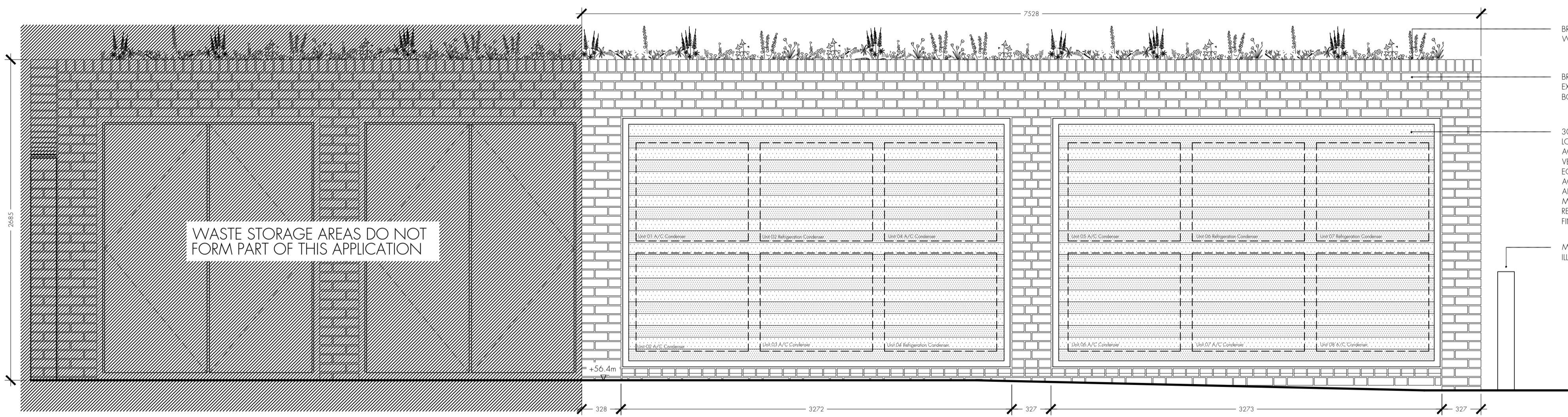


WEST ACOUSTIC PLANT ENCLOSURE PLAN

- STRUCTURAL ROOF BUILDUP:
 SEDUM 'CARPET' GROWING MEDIUM, ON 50mm SOIL SUBSTRATE, ON FILTER FLEECE, ON 25mm DRAINAGE LAYER, ON PROTECTION MAT, ON DPM, ON 18mm WBP PLYWOOD DECK, ON S4S TIMBER FRIMINGS LAID TO FALL, ON 150mm CONCRETE ROOF SLAB WITH UPSTAND TO PROVIDE STRUCTURAL DENSITY FOR ACOUSTIC ATTENUATION.
- 300mm DEEP CAJCE SH300 LOUVERED PANEL FOR ACOUSTIC ATTENUATION AND VENTILATION FOR PLANT EQUIPMENT TO ACOUSTICIANS SPECIFICATION AND INSTALLED TO MANUFACTURERS RECOMMENDATIONS. PPC FINISH IN RAL 8019.
- MARSHALLS 'GEO' 140mm ILLUMINATED MARKER BOLLARD.

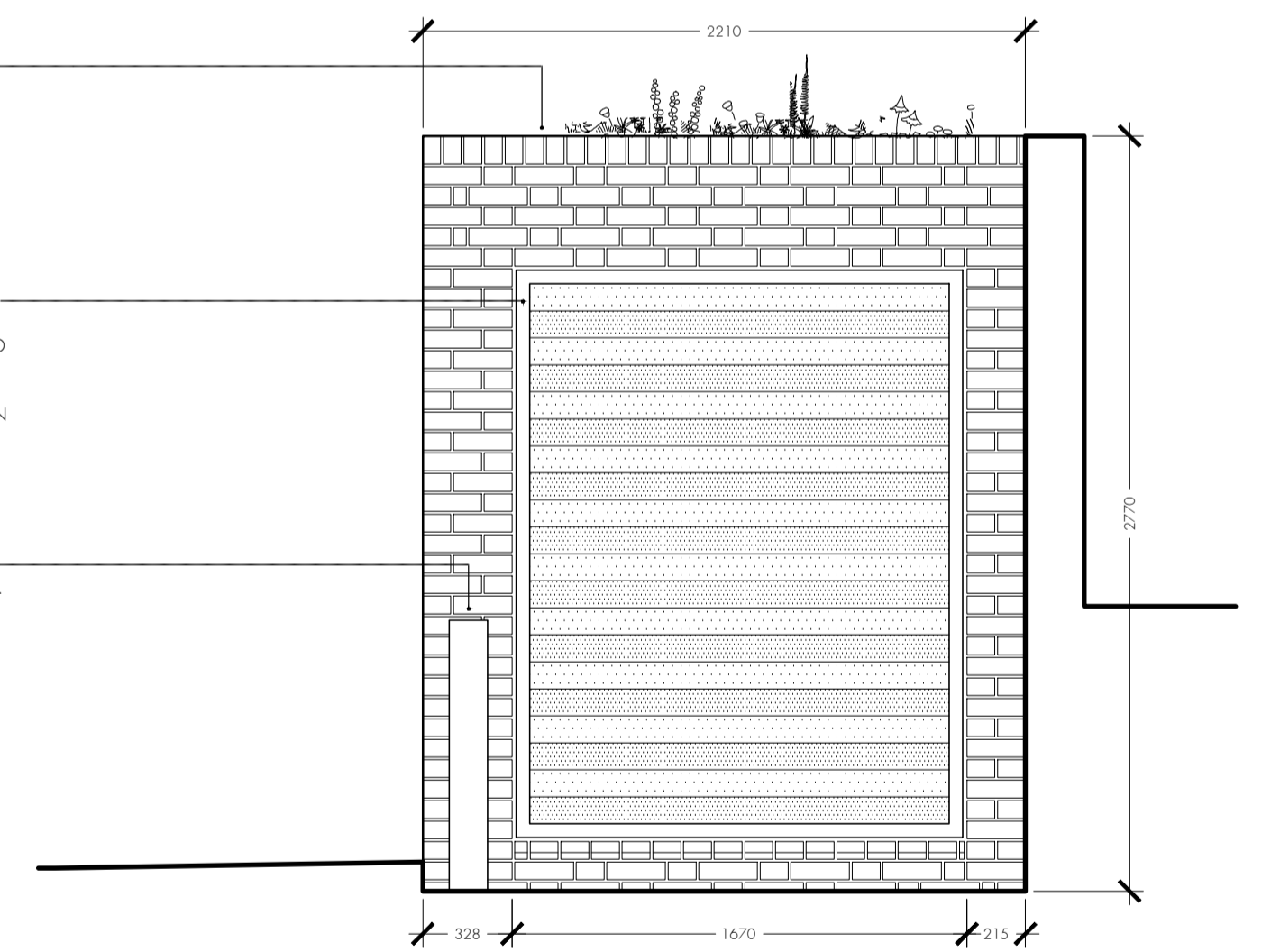


WEST ACOUSTIC PLANT ENCLOSURE ELEVATION BB



WEST ACOUSTIC PLANT ENCLOSURE ELEVATION AA

- BRICK ON EDGE COPING WITH SLATE COURSE.
- BRICKWORK TO MATCH EXISTING AND PROPOSED BOUNDARY WALL.
- 300mm DEEP CAJCE SH300 LOUVERED PANEL FOR ACOUSTIC ATTENUATION AND VENTILATION FOR PLANT EQUIPMENT TO ACOUSTICIANS SPECIFICATION AND INSTALLED TO MANUFACTURERS RECOMMENDATIONS. PPC FINISH IN RAL 8019.
- MARSHALLS 'GEO' 140mm ILLUMINATED MARKER BOLLARD.



WEST ACOUSTIC PLANT ENCLOSURE ELEVATION BB

project	Swains Lane, London, N6 6QX		
dwg title	West Building Acoustic Plant Enclosure		
job no.	1658	dwg no.	EW-116 rev. B
date	December 2018	scale @ A1	1:25
	B	26.03.19	Drawing revised so waste storage areas do not form part of this application.
	A	19.03.19	Enclosure revised to house all commercial condensers and bin storage