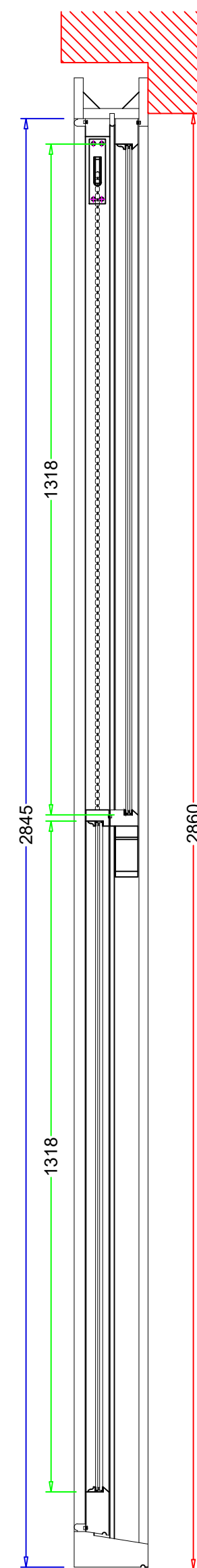
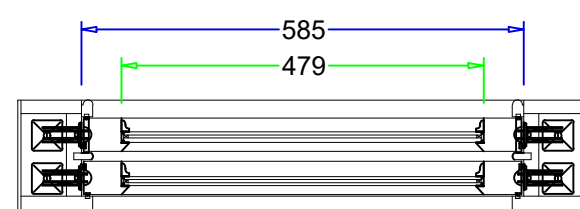
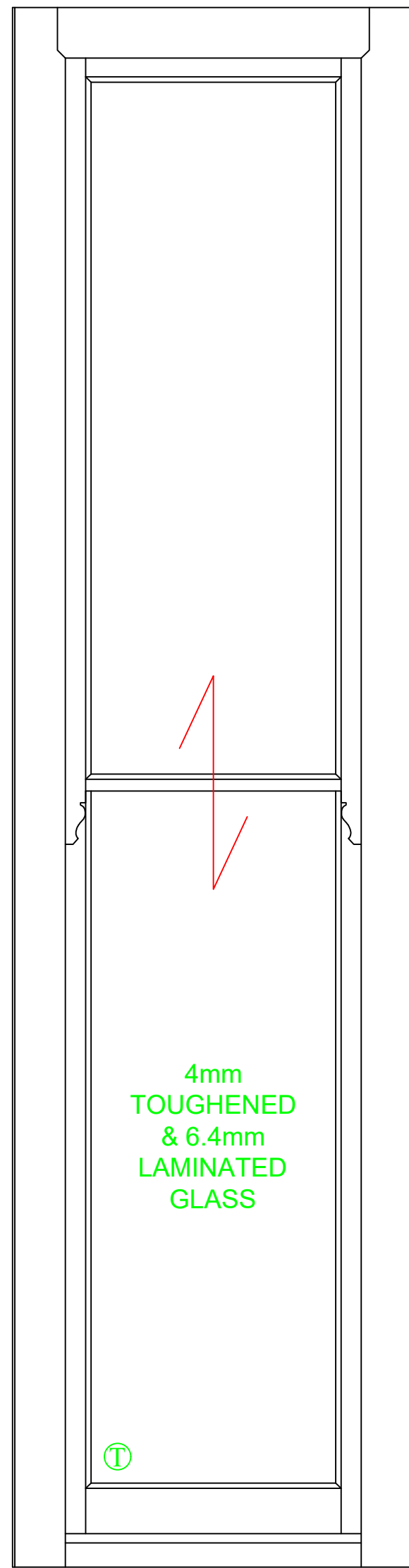
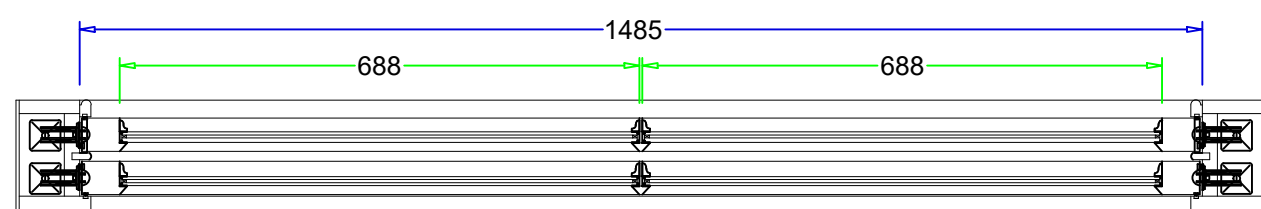
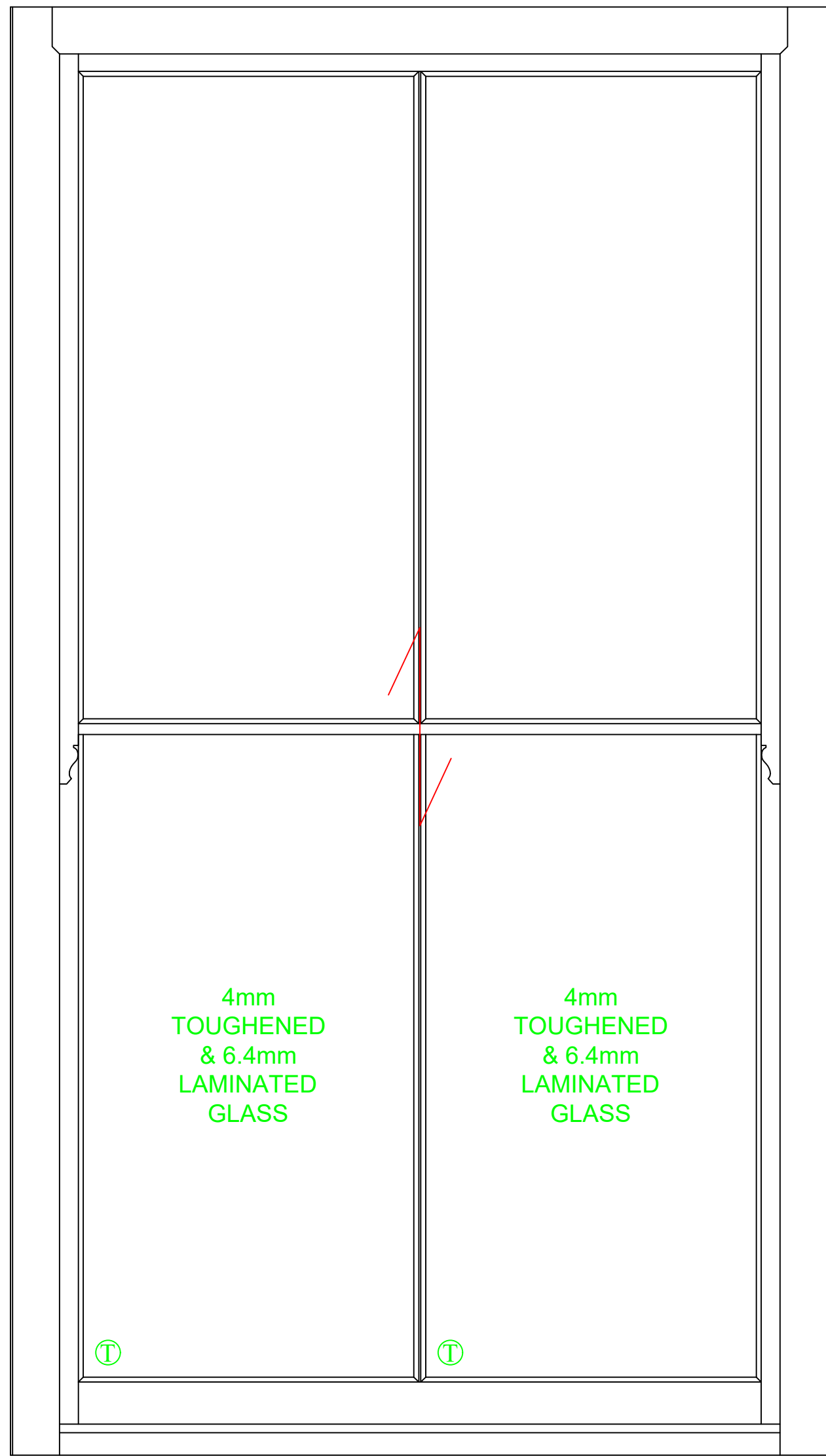
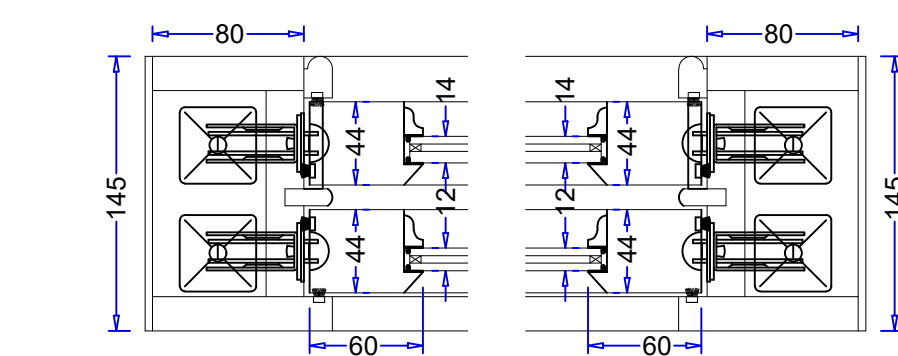


01 FRONT ELEVATION
Scale: 1:15 @A1



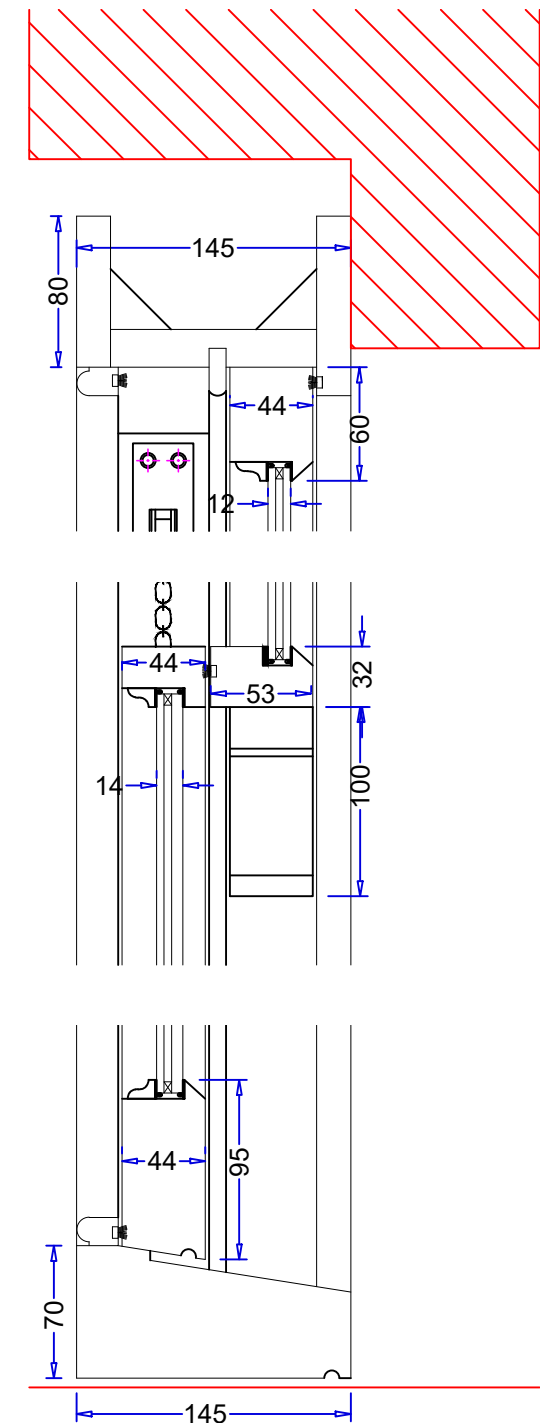
04 HORN DETAIL
Scale: 12 @A1



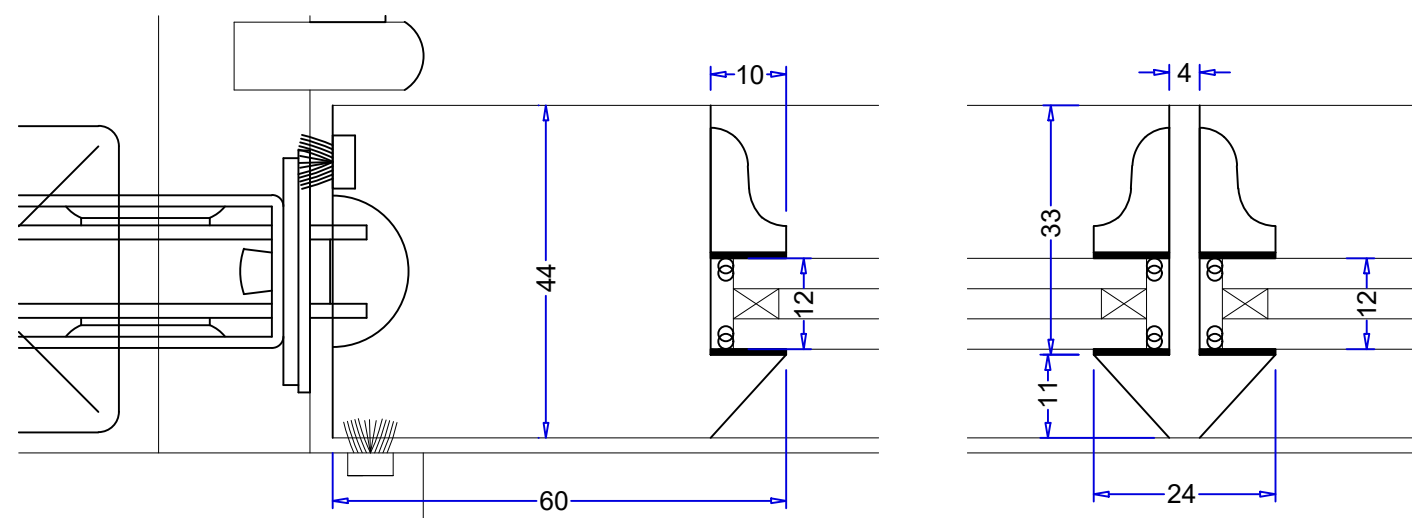
02 PLAN SECTION
Scale: 1:4 @A1

SASHES TO BE HUNG ON
HEAVY DUTY CHAINS &
PULLEY WHEELS

INFORMATION REQUIRED:
1. FINISH OF IRONMONGERY -
POLISHED BRASS, POLISHED
CHROME OR SATIN CHROME.



03 HEIGHT SECTION
Scale: 1:4 @A1



05 SASH SECTION DETAIL
Scale: 1:1 @A1

DATE	REVISION & NOTES
	<ul style="list-style-type: none">• TO SUPPLY ONLY BOX SASH WINDOWS.• ALL TO BE MANUFACTURED OUT OF ACCOYA.• TOP SASHES DOUBLE GLAZED WITH 4/4mm KRYPTON/4mm SOFT COAT LOW E GLASS.• BOTTOM SASHES DOUBLE GLAZED WITH 4mm LOW E TUFF/4mm KRYPTON/6.4mm LAMINATED GLASS.• WEIGHTS AND CHAINS SUPPLIED LOOSE FOR FITTING ON SITE.• SUPPLIED WITH FINGER PULLS, RESTRICTORS & FITCH FASTENER - FINISH TO BE CONFIRMED.• PRIMED FOR FINISHING BY OTHERS.
	<p>Notes on Drawings</p> <ul style="list-style-type: none">• All drawings are from an external point of view, unless otherwise stated.• This drawing is prepared solely for the use of K & D Joinery in preparation of their work and must not be used for any other purpose.• Double doors without a vertical transome will allow a tiny amount of light leakage at the top and bottom of the doors / sashes. <p>Notes on Sizes</p> <ul style="list-style-type: none">• We can't guarantee the stability of any door over 2200mm high. <p>Notes on Finishing External Joinery</p> <ul style="list-style-type: none">• K & D Joinery do not recommend finishing external joinery in black or a similar dark colour and cannot offer any guarantees due to the timber becoming more susceptible to movement/twisting/warping/cracking due to the darker colour absorbing more heat. <p>Notes on Ventilation</p> <ul style="list-style-type: none">• Please note, trickle vents will <u>not</u> be fitted to joinery unless specified by the client, we cannot determine the ventilation requirements. <p>Notes on Moisture Content</p> <ul style="list-style-type: none">• The Moisture content of the timber to be used will be 16% ± 3. (External)• The Moisture content of the timber to be used will be 10% ± 2. (Internal) <p>Notes for Workshop</p> <ul style="list-style-type: none">• End Grain Sealer to be used on all exposed end grain, including the ends of Beading.• Beading to be butt jointed, unless otherwise shown. <p>Notes for Site Care after Delivery</p> <ul style="list-style-type: none">• Approval of this drawing confirms that you will review and adhere to the site care information sheet attached with this Drawing. <p>Key</p> <ul style="list-style-type: none">■ = Survey Sizes■ = Joinery Sizes■ = Rebate Sizes <p>READ IN CONJUNCTION WITH THE FOLLOWING DRAWINGS 0104</p> <p>ISSUED FOR APPROVAL</p> <p>K&D Joinery Ltd</p> <p>Joinery House 89 Chequers Lane - Dagenham RM9 6QJ Tel: 020 8526 7020 Fax: 020 8526 7031 Website: www.kandd.org E-mail: info@kandd.org</p> <p>Project: 21 Belsize Road Description: Double Glazed Box Sash Windows Job No: N/A Client: Famella Ltd Scale: See Drawing @ A1 Dwg No: 0104 Rev: 00 Dwg By: CD Date: 28.02.19</p>