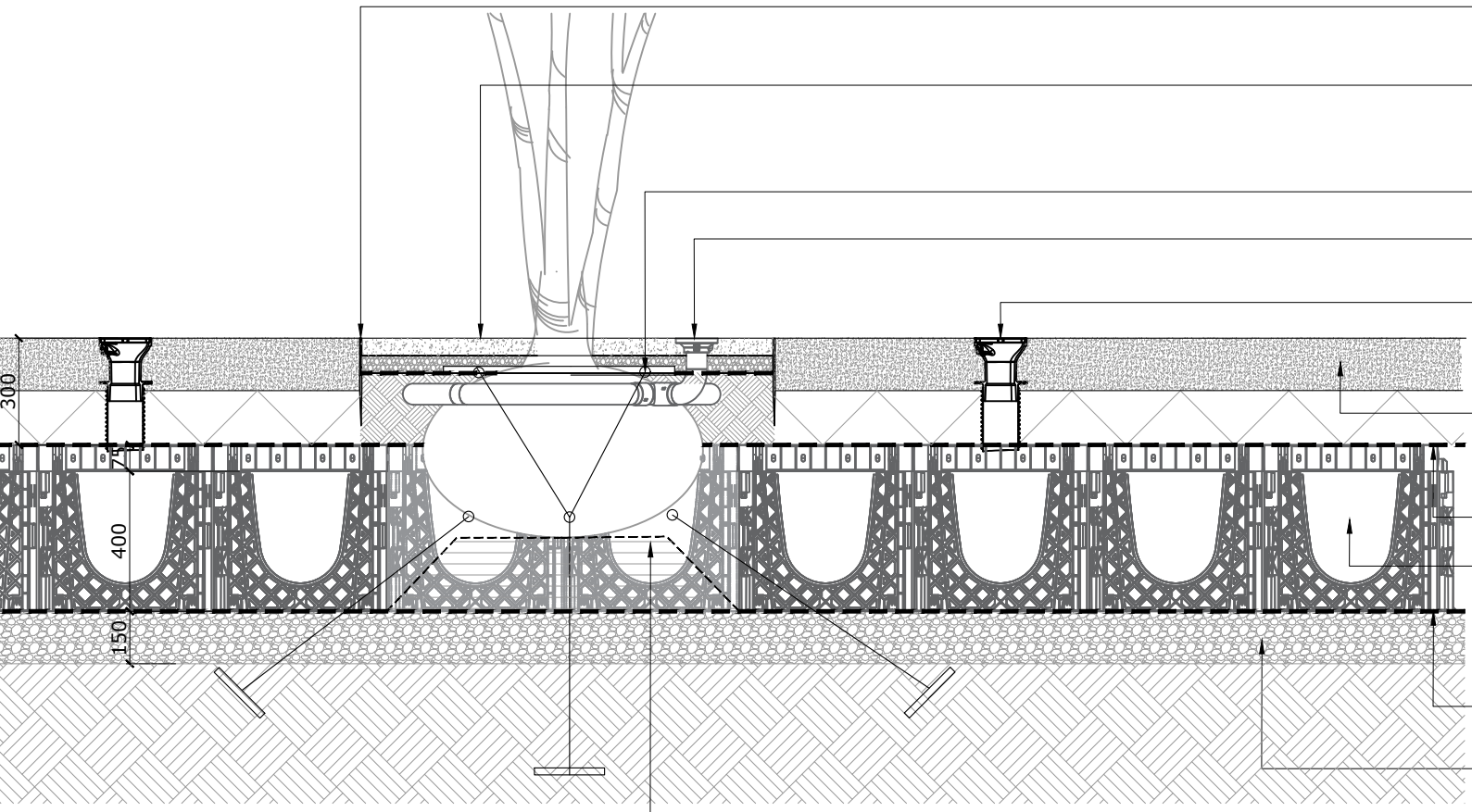


1 PLAN - TP1 - Specimen Multi-stem trees to Water Play Area



1 DETAIL - TP1 - Specimen Multi-stem trees to Water Play Area

- Garden Ring by Everedge to be flush with surrounding concrete. 1200mm dia, 125mm depth, slate colour
- Permeable Bound Surface (S06)** - refer to DET-606: 50mm depth surface course on a 50mm depth clean washed pea shingle gravel (5-10mm) layer to aid drainage.
- Rootball guying using 'Deadman' anchors.
- RootRain single inlet irrigation system with cast inlet - by Green Blue Urban or similar approved
- RRARBV150B Arborvent 150 single inlet aeration system with cast inlets fitted to RootSpace Airflow inlet - by Green Blue Urban or similar approved. 1 per tree within shared soil area.
- Decorative concrete (S02 - DET-602) - allowable depth of build up over crate system = 300mm. Crate system allows for shallower sub-base depth.
- Geotextile/separation layer - Terram 1000 or similar
- RootSpace structure - 1 upright deep x (refer to plan view) with Airflow deck - by Green Blue Urban or similar approved. In-filled with Premium Topsoil to BS3882:2015 (5mm) such as TS6 Topsoil by Bourne Amenity or similar approved
- Geotextile/separation layer - Terram 1000 or similar
- Min 150mm depth clean washed pea shingle gravel (5-10mm) layer to aid drainage.
- Compacted mounded base for root ball stability. Sides profiled to shed water

Please read the adjacent plans in conjunction with the below:

10335-LD-PLN 410 Soft Landscape Plan

Please refer to ALL necessary landscape specification clauses as indicated and required. Where not referenced, the contractor is responsible for the identification of relevant specification clauses to ALL work items across the site.

The contractor is responsible for ALL necessary protection of existing trees and vegetation to be retained in accordance with BS: 5837 2012, (10335-LD-PLN-005 Tree Constraints Plan & 10335-LD-PLN-015 Tree Protection and Removals).

All construction works are to be carried out in accordance with the latest statutory guidance, building regulations and national building specification standards.

The contractor is to follow standard practice and manufacturer recommendations for all landscape elements, unless otherwise directed.

T1	18.02.19	Tender Issue	JL	AM
Iss	Date	Description	Drn	Chk

LUC

LUC London

43 Chalton Street, London, NW1 1JD

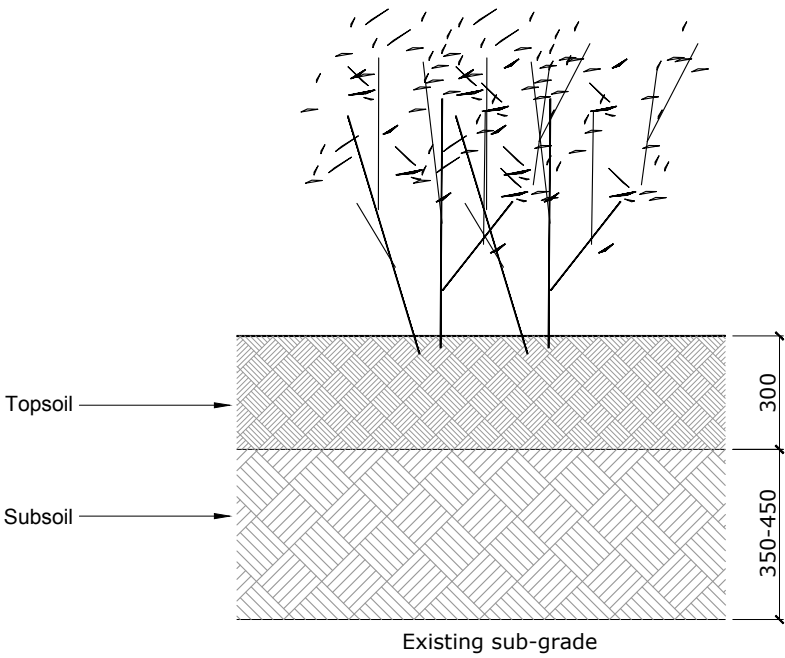
+44 (0)20 7383 5784

[london@landuse.co.uk](mailto:london@landuse.co.uk)

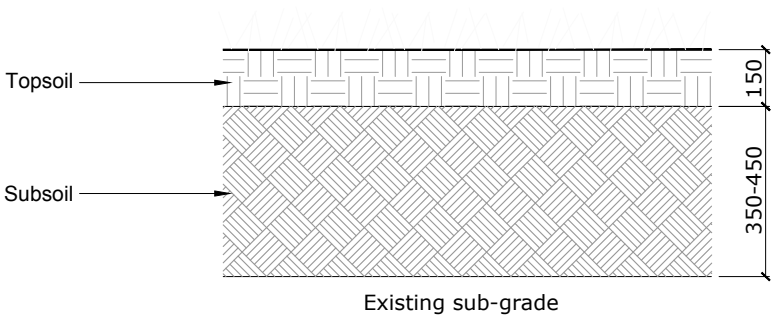
[www.landuse.co.uk](http://www.landuse.co.uk)

Project Gloucester Gate Playground Regents Park		
Client The Royal Parks		
Scale @ A3 1:20		Status TENDER
Drawing Title Softworks Details Tree Pits - TP1		
Job Nr 10335	Drawing Nr LD-DET-640	Issue T1

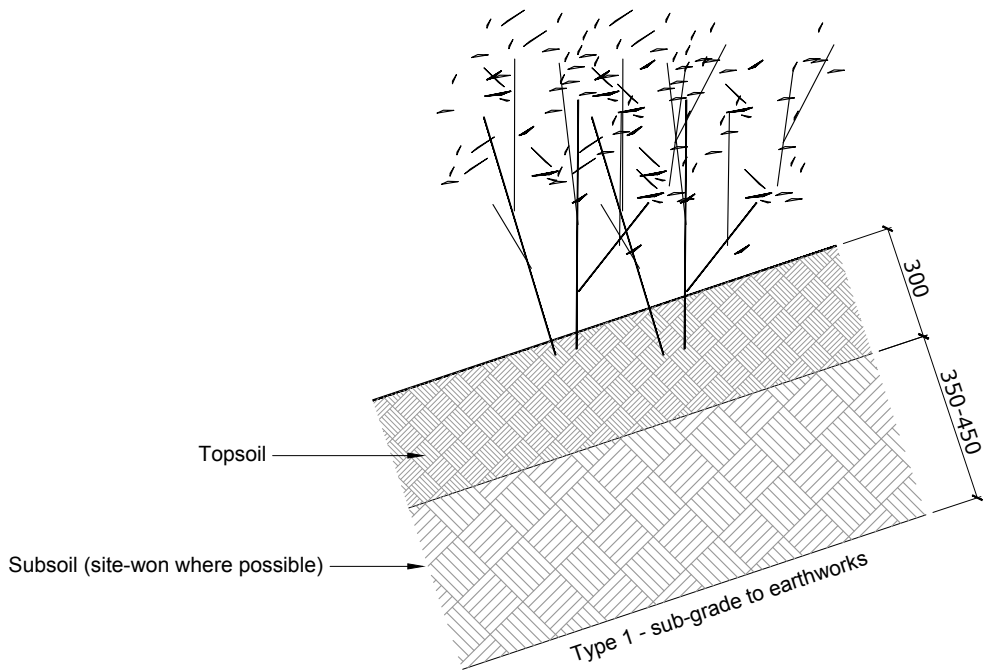




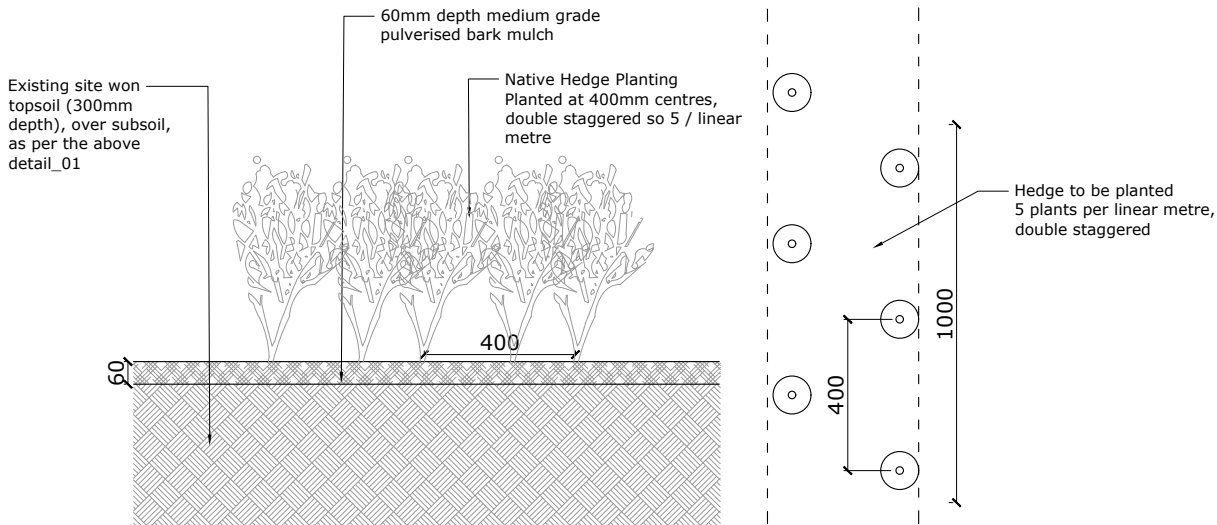
1 Shrub/Planting Bed Standard Detail



2 Turf/Seeding Standard Detail



3 Shrub/Planting on Slopes



4 Hedge Planting 'Double Staggered' Detail

Please read the adjacent plans in conjunction with the below:

10335-LD-PLN 410 Soft Landscape Plan

Please refer to ALL necessary landscape specification clauses as indicated and required. Where not referenced, the contractor is responsible for the identification of relevant specification clauses to ALL work items across the site.

The contractor is responsible for ALL necessary protection of existing trees and vegetation to be retained in accordance with BS: 5837 2012, (10335-LD-PLN-005 Tree Constraints Plan & 10335-LD-PLN-015 Tree Protection and Removals).

All construction works are to be carried out in accordance with the latest statutory guidance, building regulations and national building specification standards.

The contractor is to follow standard practice and manufacturer recommendations for all landscape elements, unless otherwise directed.

**Soiling works within Root Protection Areas:**  
Topsoil within existing tree root protection areas. Existing topsoil to be de-compacted by hand and topped up with 100mm (maximum) depth imported topsoil. Care to be taken around any exposed tree roots- refer to Arboricultural Impact Assessment for details (pg. 65 of DAS)

**Ensure all soft landscape works comply with the following:**

- All imported topsoil to conform to BS 3882:2007
- Site won topsoil - Strip and store to specification. When re-laying existing topsoil for grass areas allow for spreading and breaking up of large lumps, plus x2 rollover with a hand roller to squash lumps and clods of previously lifted top soil. Bring soil into condition suitable for forming a tilth for seeding. When re-laying for planted areas add screening of site won soil to remove clods and grass roots from soil.
- BS 4428:1989 - Code of practice for general landscape operations (excluding hard surfaces)
- BS 8545:2014 - Trees: from nursery to independence in the landscape. Recommendations

All planting to be sourced as specified within planting plans 10335-LD-PLN-431-433. Notify CA of any recommendations for substitutions.

Refer to LUC drawing no. 10335-LD-DET-640-644 for Tree pit & planting details

T1	18.02.19	Tender Issue	JL	AM
Iss	Date	Description	Drn	Chk

<div><div>LUC</div><div>LUC London 43 Chalton Street, London, NW1 1JD +44 (0)20 7383 5784 london@landuse.co.uk <a href="http://www.landuse.co.uk">www.landuse.co.uk</a></div></div>		
Project Gloucester Gate Playground Regents Park		
Client The Royal Parks		
Scale @ A3 1:20	Status TENDER	
Drawing Title Softworks Details Planting, Turfing and Hedges		
Job Nr 10335	Drawing Nr LD-DET-642	Issue T1