

Bespoke Play Equipment

P01 - Timber Logs with Nets and Traverse Ropes - Contractor to make and install.
P02 - Timber Log Steps. - Contractor to make and install.
P03 - Timber Stepping Stumps - Contractor to make and install.
P04 - Climbing ropes
P05 - Timber trunk steps
P06 - 'The Revetment'
Timber logs incorporating timber and rope bridge, climbing wall and musical play elements
P07 - Timber stepping stones
P08 - Timber standing posts
Visually connecting the Revetment (P06) to the timber logs and nets (P01).
W01 - Willow Den
To be supplied and installed by willow artist (Jim Buchanan Projects Ltd).
W02 - Low Willow Fence
400mm height, to protect and restrict desire lines through planting. To be supplied and installed by willow artist (Jim Buchanan Projects Ltd).
W03 - Willow Tunnel
2m height, to be supplied and installed by willow artist (Jim Buchanan Projects Ltd).

Catalogue Play Equipment

C01 - Large Gated Cableway 50m
Ref: 6.02100 by Richter Spielgeräte GmbH
C02 - Orb Oak
Ref: IP17 by Inclusive Play
C03 - 'Wheelspin' Roundabout by Inclusive Play
Ref: IP12
C04 - Quad Swing
With 2 x Rubber safety swing seats and 2 x Original Sutcliffe Cradle seats on each set. By Jupiter Play Ref: 901040300R
C05 - Cradle Nest Swing
Ref: 6.14500 by Richter Spielgeräte GmbH
C06 - Slide with One Wave
Ref: 3.63220 by Richter Spielgeräte GmbH
C07 - Wide Slide
Ref: 3.19200 by Richter Spielgeräte GmbH
C08 - Pump See-Saw With Concrete Casting
Ref: 5.27020 by Richter Spielgeräte GmbH
C09 - Timber Log Tunnels
Ref: 2051 by Touchwood

Catalogue Water Play Equipment

D01 - Round Mud Table
Ref: 6.05000 by Richter Spielgeräte GmbH
D02 - Channel With Shutter
Ref: 5.10400 by Richter Spielgeräte GmbH
D03 - Solid Water Channel, 2m
Ref: 5.12060 by Richter Spielgeräte GmbH
D04 - Solid Water Channel, 2.5m
Ref: 5.12070 by Richter Spielgeräte GmbH
D05 - Solid Water Channel, 1.5m
Ref: 5.102050 by Richter Spielgeräte GmbH
D06 - Channel With Two Way Sial
Ref: 5.10300 by Richter Spielgeräte GmbH
D07 - Mill Wheel of Wood
Ref: 5.1580 by Richter Spielgeräte GmbH
D08 - Big Bucket Wheel
Ref: 5.15920 by Richter Spielgeräte GmbH
D09 - Pump Pedestal
Ref: 5.19000 by Richter Spielgeräte GmbH
D10 - Playground Pump
Ref: 5.17500 by Richter Spielgeräte GmbH
D11 - Mushroom Spring
Ref: 5.18000 by Richter Spielgeräte GmbH
D12 - Rectangular Flap
Ref: 5.28034 by Richter Spielgeräte GmbH
D13 - Sickle Gate
Ref: 5.28032 by Richter Spielgeräte GmbH
D14 - Bar Gate
Ref: 5.28031 by Richter Spielgeräte GmbH
D15 - Rotating Gate
Ref: 5.28035 by Richter Spielgeräte GmbH

Notes
Do not scale from this drawing.
All dimensions are drawn in millimetres.
Drawing & design copyright LUC.
Reproduction of this drawing in whole or in part is prohibited without prior permission.

Key

Ownership Boundary

Application Boundary

Existing trees
Dashed line indicates Root Protection Area. Refer to Arboricultural Report for further details.
Proposed Trees
Refer to LUC drawing no. 10335-LD-PLN-410 (Soft Landscape Plan) for further details.
Existing planting

Proposed planting
Refer to LUC drawing no. 10335-LD-PLN-310 (Topsoil Plan) and 410 (Soft Landscape Plan) for further details.
Play Fall Zones

S01 - Tigermulch
Tiger Mulch safety surface by Redlynch Leisure Ltd.
50mm depth. Laid over geotextile membrane. 75mm depth compacted Type 1 sub-base, and levelled and compacted subsoil. Natural mixed brown colours. All installed to manufacturers recommendations.
S02 - Textured Concrete
Hand-laid textured concrete surface, 250mm depth reinforced concrete over 150mm depth Type 1 sub-base. Concrete to have sand-blasted and textured surface finish, with stone pebbles, cobbles and boulders inset into surface. Colour finish to be agreed and confirmed.

S03 - Play Sand
300mm depth multi washed and triple-screened silica sand-based loose impact absorbing surface (LIAS) in accordance with BS EN 1176.
S04 - Timber Decking
Grooved Deck Boards in Hardwood with FSC Chain of Custody Certification by Woodscape, 25x145x2000mm boards, laid with a 5mm gap. Note: No Woodscape branding to appear on any of the timber. Laid over a geotextile membrane, and levelled and compacted subsoil.

S05 - Stone Setts
Reclaimed Granite Setts, 100x200x100mm, silver grey colour, laid in a staggered circular bond.
S06 - Macadam - Pedestrian
To Pedestrian loadings, designed by engineer.

S07 - Self Binding Gravel
Bredden self binding gravel path, natural buff colour. 60mm depth wearing course over 100mm depth well compacted DOT Type 1 sub-base and geotextile membrane.
S08 - Play Bark
Use salvaged playbark and top up with Playbark by Melcourt Ltd. Well-graded, chunky, pine bark, loose impact absorbing surface to a finished depth of 200mm, allowing for settlement and topping up.

S09 - Reinforced Grass
BodPave 85 porous paving grid by Terram (or similar approved), in black. Interlocking cellular porous plastic paving grid system for grass reinforcement.
B01 - Play boulders, cobbles and pebbles
Glacial boulders in varying sizes from CED Ltd (or similar approved), maximum dimension of 1.5m, minimum of 0.5m.

E01 - Timber Edging
Softwood pressure treated timber edges laid flush, 150x19mm with 50x50x500mm softwood pegs at 500mm centres and double pegged at corners/junctions.
E02 - Granite Sett Edging
100x100x100mm silver grey granite setts laid flush with ground level in a 1 course stack bond edging.

E03 - Timber Step
300mm width treads x 150mm height risers formed using 100mm wide x 200mm deep Oak timber sleepers.
F01 - Sky Seats
Carved timber logs with bark left intact to form ergonomic seats. Approximately 0.8-1.0m x 1.5-2.0m length. Supplied by Touchwood, installed by contractor, set out by Jim Buchanan.

F02 - Timber Seating
Hardwood slatted linear long timber seat, with small sections of back and arm-rests.
F03 - Timber Seating Logs
Salvaged/reclaimed timber tree trunks for seating. Minimum diameter of 450mm, minimum length of 2m. Timber should be from a sustainable source and confirmed with CA. To be set in grass or tiger mulch as shown, in a ground indentation to stop them rolling.

F04 - Fence
Post and strained wire fence in hedge.
F05 - Salvaged Railing
Salvaged railing from existing playground re-positioned and re-painted.
F06 - Self-closing Gate
Prossale hydraulic self-closing gate by IAE, or similar approved. Must feature in built hydraulic unit which is shielded to prevent vandalism and is impossible to slam shut, and an anti-trap mechanism that cannot swing beyond its stop point. 1m height in black (RAL 9005) coloured polyester powder coated finish, (Playspec Flat Top fence by IAE). F06a is the same gate without the self-closing mechanism (for maintenance access).

F07 - Picnic Bench
Existing picnic bench to be re-located.
F08 - Timber Seating Cubes
300x300x300mm untreated Oak timber seating cubes, fixed below ground using steel anchor rods in concrete footings.

F09 - Sky Seats
Carved timber logs with bark left intact to form ergonomic seats. Approximately 0.8-1.0m x 1.5-2.0m length. Supplied by Touchwood, installed by contractor, set out by Jim Buchanan.

F10 - Timber Seating
Hardwood slatted linear long timber seat, with small sections of back and arm-rests.

F11 - Timber Seating Logs
Salvaged/reclaimed timber tree trunks for seating. Minimum diameter of 450mm, minimum length of 2m. Timber should be from a sustainable source and confirmed with CA. To be set in grass or tiger mulch as shown, in a ground indentation to stop them rolling.

F12 - Fence
Post and strained wire fence in hedge.

F13 - Salvaged Railing
Salvaged railing from existing playground re-positioned and re-painted.

F14 - Self-closing Gate
Prossale hydraulic self-closing gate by IAE, or similar approved. Must feature in built hydraulic unit which is shielded to prevent vandalism and is impossible to slam shut, and an anti-trap mechanism that cannot swing beyond its stop point. 1m height in black (RAL 9005) coloured polyester powder coated finish, (Playspec Flat Top fence by IAE). F14a is the same gate without the self-closing mechanism (for maintenance access).

F15 - Picnic Bench
Existing picnic bench to be re-located.

F16 - Timber Seating Cubes
300x300x300mm untreated Oak timber seating cubes, fixed below ground using steel anchor rods in concrete footings.

F17 - Sky Seats
Carved timber logs with bark left intact to form ergonomic seats. Approximately 0.8-1.0m x 1.5-2.0m length. Supplied by Touchwood, installed by contractor, set out by Jim Buchanan.

F18 - Timber Seating
Hardwood slatted linear long timber seat, with small sections of back and arm-rests.

F19 - Timber Seating Logs
Salvaged/reclaimed timber tree trunks for seating. Minimum diameter of 450mm, minimum length of 2m. Timber should be from a sustainable source and confirmed with CA. To be set in grass or tiger mulch as shown, in a ground indentation to stop them rolling.

F20 - Fence
Post and strained wire fence in hedge.

F21 - Salvaged Railing
Salvaged railing from existing playground re-positioned and re-painted.

F22 - Self-closing Gate
Prossale hydraulic self-closing gate by IAE, or similar approved. Must feature in built hydraulic unit which is shielded to prevent vandalism and is impossible to slam shut, and an anti-trap mechanism that cannot swing beyond its stop point. 1m height in black (RAL 9005) coloured polyester powder coated finish, (Playspec Flat Top fence by IAE). F22a is the same gate without the self-closing mechanism (for maintenance access).

F23 - Picnic Bench
Existing picnic bench to be re-located.

F24 - Timber Seating Cubes
300x300x300mm untreated Oak timber seating cubes, fixed below ground using steel anchor rods in concrete footings.

F25 - Sky Seats
Carved timber logs with bark left intact to form ergonomic seats. Approximately 0.8-1.0m x 1.5-2.0m length. Supplied by Touchwood, installed by contractor, set out by Jim Buchanan.

F26 - Timber Seating
Hardwood slatted linear long timber seat, with small sections of back and arm-rests.

F27 - Timber Seating Logs
Salvaged/reclaimed timber tree trunks for seating. Minimum diameter of 450mm, minimum length of 2m. Timber should be from a sustainable source and confirmed with CA. To be set in grass or tiger mulch as shown, in a ground indentation to stop them rolling.

F28 - Fence
Post and strained wire fence in hedge.

F29 - Salvaged Railing
Salvaged railing from existing playground re-positioned and re-painted.

F30 - Self-closing Gate
Prossale hydraulic self-closing gate by IAE, or similar approved. Must feature in built hydraulic unit which is shielded to prevent vandalism and is impossible to slam shut, and an anti-trap mechanism that cannot swing beyond its stop point. 1m height in black (RAL 9005) coloured polyester powder coated finish, (Playspec Flat Top fence by IAE). F30a is the same gate without the self-closing mechanism (for maintenance access).

F31 - Picnic Bench
Existing picnic bench to be re-located.

F32 - Timber Seating Cubes
300x300x300mm untreated Oak timber seating cubes, fixed below ground using steel anchor rods in concrete footings.

F33 - Sky Seats
Carved timber logs with bark left intact to form ergonomic seats. Approximately 0.8-1.0m x 1.5-2.0m length. Supplied by Touchwood, installed by contractor, set out by Jim Buchanan.

F34 - Timber Seating
Hardwood slatted linear long timber seat, with small sections of back and arm-rests.

F35 - Timber Seating Logs
Salvaged/reclaimed timber tree trunks for seating. Minimum diameter of 450mm, minimum length of 2m. Timber should be from a sustainable source and confirmed with CA. To be set in grass or tiger mulch as shown, in a ground indentation to stop them rolling.

F36 - Fence
Post and strained wire fence in hedge.

F37 - Salvaged Railing
Salvaged railing from existing playground re-positioned and re-painted.

F38 - Self-closing Gate
Prossale hydraulic self-closing gate by IAE, or similar approved. Must feature in built hydraulic unit which is shielded to prevent vandalism and is impossible to slam shut, and an anti-trap mechanism that cannot swing beyond its stop point. 1m height in black (RAL 9005) coloured polyester powder coated finish, (Playspec Flat Top fence by IAE). F38a is the same gate without the self-closing mechanism (for maintenance access).

F39 - Picnic Bench
Existing picnic bench to be re-located.

F40 - Timber Seating Cubes
300x300x300mm untreated Oak timber seating cubes, fixed below ground using steel anchor rods in concrete footings.

F41 - Sky Seats
Carved timber logs with bark left intact to form ergonomic seats. Approximately 0.8-1.0m x 1.5-2.0m length. Supplied by Touchwood, installed by contractor, set out by Jim Buchanan.

F42 - Timber Seating
Hardwood slatted linear long timber seat, with small sections of back and arm-rests.

F43 - Timber Seating Logs
Salvaged/reclaimed timber tree trunks for seating. Minimum diameter of 450mm, minimum length of 2m. Timber should be from a sustainable source and confirmed with CA. To be set in grass or tiger mulch as shown, in a ground indentation to stop them rolling.

F44 - Fence
Post and strained wire fence in hedge.

F45 - Salvaged Railing
Salvaged railing from existing playground re-positioned and re-painted.

F46 - Self-closing Gate
Prossale hydraulic self-closing gate by IAE, or similar approved. Must feature in built hydraulic unit which is shielded to prevent vandalism and is impossible to slam shut, and an anti-trap mechanism that cannot swing beyond its stop point. 1m height in black (RAL 9005) coloured polyester powder coated finish, (Playspec Flat Top fence by IAE). F46a is the same gate without the self-closing mechanism (for maintenance access).

F47 - Picnic Bench
Existing picnic bench to be re-located.

F48 - Timber Seating Cubes
300x300x300mm untreated Oak timber seating cubes, fixed below ground using steel anchor rods in concrete footings.

F49 - Sky Seats
Carved timber logs with bark left intact to form ergonomic seats. Approximately 0.8-1.0m x 1.5-2.0m length. Supplied by Touchwood, installed by contractor, set out by Jim Buchanan.

F50 - Timber Seating
Hardwood slatted linear long timber seat, with small sections of back and arm-rests.

F51 - Timber Seating Logs
Salvaged/reclaimed timber tree trunks for seating. Minimum diameter of 450mm, minimum length of 2m. Timber should be from a sustainable source and confirmed with CA. To be set in grass or tiger mulch as shown, in a ground indentation to stop them rolling.

F52 - Fence
Post and strained wire fence in hedge.

F53 - Salvaged Railing
Salvaged railing from existing playground re-positioned and re-painted.

F54 - Self-closing Gate
Prossale hydraulic self-closing gate by IAE, or similar approved. Must feature in built hydraulic unit which is shielded to prevent vandalism and is impossible to slam shut, and an anti-trap mechanism that cannot swing beyond its stop point. 1m height in black (RAL 9005) coloured polyester powder coated finish, (Playspec Flat Top fence by IAE). F54a is the same gate without the self-closing mechanism (for maintenance access).

F55 - Picnic Bench
Existing picnic bench to be re-located.

F56 - Timber Seating Cubes
300x300x300mm untreated Oak timber seating cubes, fixed below ground using steel anchor rods in concrete footings.

F57 - Sky Seats
Carved timber logs with bark left intact to form ergonomic seats. Approximately 0.8-1.0m x 1.5-2.0m length. Supplied by Touchwood, installed by contractor, set out by Jim Buchanan.

F58 - Timber Seating
Hardwood slatted linear long timber seat, with small sections of back and arm-rests.

F59 - Timber Seating Logs
Salvaged/reclaimed timber tree trunks for seating. Minimum diameter of 450mm, minimum length of 2m. Timber should be from a sustainable source and confirmed with CA. To be set in grass or tiger mulch as shown, in a ground indentation to stop them rolling.

F60 - Fence
Post and strained wire fence in hedge.

F61 - Salvaged Railing
Salvaged railing from existing playground re-positioned and re-painted.

F62 - Self-closing Gate
Prossale hydraulic self-closing gate by IAE, or similar approved. Must feature in built hydraulic unit which is shielded to prevent vandalism and is impossible to slam shut, and an anti-trap mechanism that cannot swing beyond its stop point. 1m height in black (RAL 9005) coloured polyester powder coated finish, (Playspec Flat Top fence by IAE). F62a is the same gate without the self-closing mechanism (for maintenance access).

F63 - Picnic Bench
Existing picnic bench to be re-located.

F64 - Timber Seating Cubes
300x300x300mm untreated Oak timber seating cubes, fixed below ground using steel anchor rods in concrete footings.

F65 - Sky Seats
Carved timber logs with bark left intact to form ergonomic seats. Approximately 0.8-1.0m x 1.5-2.0m length. Supplied by Touchwood, installed by contractor, set out by Jim Buchanan.

F66 - Timber Seating
Hardwood slatted linear long timber seat, with small sections of back and arm-rests.

F67 - Timber Seating Logs
Salvaged/reclaimed timber tree trunks for seating. Minimum diameter of 450mm, minimum length of 2m. Timber should be from a sustainable source and confirmed with CA. To be set in grass or tiger mulch as shown, in a ground indentation to stop them rolling.

F68 - Fence
Post and strained wire fence in hedge.

F69 - Salvaged Railing
Salvaged railing from existing playground re-positioned and re-painted.

F70 - Self-closing Gate
Prossale hydraulic self-closing gate by IAE, or similar approved. Must feature in built hydraulic unit which is shielded to prevent vandalism and is impossible to slam shut, and an anti-trap mechanism that cannot swing beyond its stop point. 1m height in black (RAL 9005) coloured polyester powder coated finish, (Playspec Flat Top fence by IAE). F70a is the same gate without the self-closing mechanism (for maintenance access).

F71 - Picnic Bench
Existing picnic bench to be re-located.

F72 - Timber Seating Cubes
300x300x300mm untreated Oak timber seating cubes, fixed below ground using steel anchor rods in concrete footings.

F73 - Sky Seats
Carved timber logs with bark left intact to form ergonomic seats. Approximately 0.8-1.0m x 1.5-2.0m length. Supplied by Touchwood, installed by contractor, set out by Jim Buchanan.

F74 - Timber Seating
Hardwood slatted linear long timber seat, with small sections of back and arm-rests.

F75 - Timber Seating Logs
Salvaged/reclaimed timber tree trunks for seating. Minimum diameter of 450mm, minimum length of 2m. Timber should be from a sustainable source and confirmed with CA. To be set in grass or tiger mulch as shown, in a ground indentation to stop them rolling.

F76 - Fence
Post and strained wire fence in hedge.

F77 - Salvaged Railing
Salvaged railing from existing playground re-positioned and re-painted.

F78 - Self-closing Gate
Prossale hydraulic self-closing gate by IAE, or similar approved. Must feature in built hydraulic unit which is shielded to prevent vandalism and is impossible to slam shut, and an anti-trap mechanism that cannot swing beyond its stop point. 1m height in black (RAL 9005) coloured polyester powder coated finish, (Playspec Flat Top fence by IAE). F78a is the same gate without the self-closing mechanism (for maintenance access).

F79 - Picnic Bench
Existing picnic bench to be re-located.

F80 - Timber Seating Cubes
300x300x300mm untreated Oak timber seating cubes, fixed below ground using steel anchor rods in concrete footings.

F81 - Sky Seats
Carved timber logs with bark left intact to form ergonomic seats. Approximately 0.8-1.0m x 1.5-2.0m length. Supplied by Touchwood, installed by contractor, set out by Jim Buchanan.

F82 - Timber Seating
Hardwood slatted linear long timber seat, with small sections of back and arm-rests.

F83 - Timber Seating Logs
Salvaged/reclaimed timber tree trunks for seating. Minimum diameter of 450mm, minimum length of 2m. Timber should be from a sustainable source and confirmed with CA. To be set in grass or tiger mulch as shown, in a ground indentation to stop them rolling.

F84 - Fence
Post and strained wire fence in hedge.

F85 - Salvaged Railing
Salvaged railing from existing playground re-positioned and re-painted.

F86 - Self-closing Gate
Prossale hydraulic self-closing gate by IAE, or similar approved. Must feature in built hydraulic unit which is shielded to prevent vandalism and is impossible to slam shut, and an anti-trap mechanism that cannot swing beyond its stop point. 1m height in black (RAL 9005) coloured polyester powder coated finish, (Playspec Flat Top fence by IAE). F86a is the same gate without the self-closing mechanism (for maintenance access).

F87 - Picnic Bench
Existing picnic bench to be re-located.

F88 - Timber Seating Cubes
300x300x300mm untreated Oak timber seating cubes, fixed below ground using steel anchor rods in concrete footings.

F89 - Sky Seats
Carved timber logs with bark left intact to form ergonomic seats. Approximately 0.8-1.0m x 1.5-2.0m length. Supplied by Touchwood, installed by contractor, set out by Jim Buchanan.

F90 - Timber Seating
Hardwood slatted linear long timber seat, with small sections of back and arm-rests.

F91 - Timber Seating Logs
Salvaged/reclaimed timber tree trunks for seating. Minimum diameter of 450mm, minimum length of 2m. Timber should be from a sustainable source and confirmed with CA. To be set in grass or tiger mulch as shown, in a ground indentation to stop them rolling.

F92 - Fence
Post and strained wire fence in hedge.

F93 - Salvaged Railing
Salvaged railing from existing playground re-positioned and re-painted.

F94 - Self-closing Gate
Prossale hydraulic self-closing gate by IAE, or similar approved. Must feature in built hydraulic unit which is shielded to prevent vandalism and is impossible to slam shut, and an anti-trap mechanism that cannot swing beyond its stop point. 1m height in black (RAL 9005) coloured polyester powder coated finish, (Playspec Flat Top fence by IAE). F94a is the same gate without the self-closing mechanism (for maintenance access).

F95 - Picnic Bench
Existing picnic bench to be re-located.

F96 - Timber Seating Cubes
300x300x300mm untreated Oak timber seating cubes, fixed below ground using steel anchor rods in concrete footings.

F97 - Sky Seats
Carved timber logs with bark left intact to form ergonomic seats. Approximately 0.8-1.0m x 1.5-2.0m length. Supplied by Touchwood, installed by contractor, set out by Jim Buchanan.

F98 - Timber Seating
Hardwood slatted linear long timber seat, with small sections of back and arm-rests.

F99 - Timber Seating Logs
Salvaged/reclaimed timber tree trunks for seating. Minimum diameter of 450mm, minimum length of 2m. Timber should be from a sustainable source and confirmed with CA. To be set in grass or tiger mulch as shown, in a ground indentation to stop them rolling.

F100 - Fence
Post and strained wire fence in hedge.



Do not scale from this drawing.
All dimensions are drawn in millimetres.
Drawing & design copyright LUC.
Reproduction of this drawing in whole or in part is
prohibited without prior permission.

Ownership Boundary

Application Boundary

Existing trees
Dashed line indicates Root Protection Area. Refer to Arboricultural Report for further details.

Proposed Trees
Refer to LUC drawing no. 10335-LD-PLN-410 (Soft Landscape Plan) for further details.

Existing planting
To be retained

50mm depth site won topsoil laid over 200mm depth site won subsoil (minimum), to all meadow grass areas.

150mm depth site won topsoil laid over existing subsoil to all proposed amenity grass areas. Top up any shortfall in site won topsoil with imported topsoil.

450mm depth imported topsoil laid over 300mm site won subsoil (minimum).

Topsoil within existing tree root protection areas.
Existing topsoil to be de-compacted by hand and topped up with 100mm (maximum) depth imported topsoil. Care to be taken around any exposed tree roots- refer to Arboricultural Impact Assessment for details (pg. 65 of DAS)

All imported topsoil to conform to BS 3882:2007

Site won topsoil

Strip and store to specification. When re-laying existing topsoil for grass areas allow for spreading and breaking up of large lumps, plus x2 rollover with a hand roller to squash lumps and clods of previously lifted top soil. Bring soil into condition suitable for forming a tilth for seeding.

When re-laying for planted areas add screening of site won soil to remove clods and grass roots from soil.



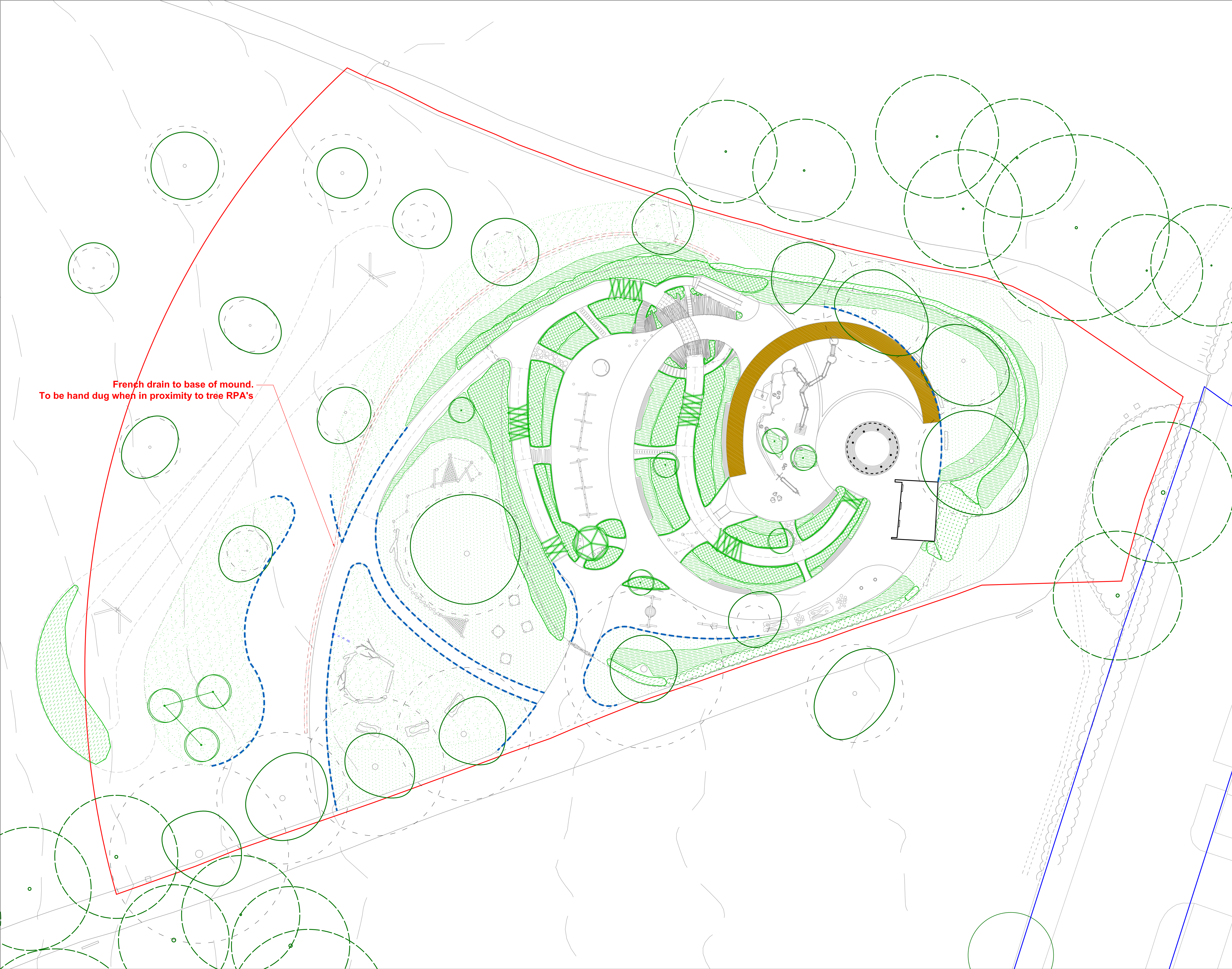
Project
Gloucester Gate Playground
The Regent's Park

Client
The Royal Parks

Scale @ A3 1:500	Status PLANNING
---------------------	---------------------------

Drawing Title	Topsoil & Subsoil Plan
---------------	------------------------

Job Nr 10335	Drawing Nr 10335-LD-PLN-310	Issue D
-----------------	--------------------------------	------------



French drain to base of mound.
To be hand dug when in proximity to tree RPA's

Notes
Do not scale from this drawing.
All dimensions are drawn in millimetres.
Drawing & design copyright LUC.
Reproduction of this drawing in whole or in part is prohibited without prior permission.

Key

Ownership Boundary

Application Boundary

Existing trees
Dashed line indicates Root Protection Area. Refer to Arboricultural Report for further details.

Proposed Trees
Allow for 5m Extra-heavy standards (e.g. Platanus hispanica), 18-20cm girth, 4.5-5.5m ht, RB.

Existing planting
To be retained.

Proposed 'High' planting
Detail Planting plan to be prepared at RIBA Stage 4, consisting of UK native large shrubs and hedgerow species with at least 1m clear stem, and under planted with groundcover plants and small shade tolerant herbaceous species. All planting areas cultivated to 200mm depth; with 50mm layer spent mushroom compost, 10g/m² slow release fertiliser cultivated in; planting as shown with 60mm depth medium coarse pulverised bark mulch.

Proposed 'Low' planting
Detail Planting plan to be prepared at RIBA Stage 4, consisting of groundcover plants and low shrub and herbaceous species. All planting areas cultivated to 200mm depth; with 50mm layer spent mushroom compost, 10g/m² slow release fertiliser cultivated in; planting as shown with 60mm depth medium coarse pulverised bark mulch.

Proposed Hedge planting
Detail Planting plan to be prepared at RIBA Stage 4, consisting of a UK native hedgerow mix. All planting areas cultivated to 200mm depth; with 50mm layer spent mushroom compost, 10g/m² slow release fertiliser cultivated in; planting as shown with 60mm depth medium coarse pulverised bark mulch.

Proposed amenity grass seed
Cultivated and prepared, DLF seed mix PM 51 Greenscape @ 35g/m². Cultivate in approx 4g/m² (or to manufacturer's recommendations) of slow release fertiliser and mix into the top 50mm of soil.

Proposed wildflower meadow seed
Cultivated and prepared, DLF Wildflower seed mix PRO FLORA 9 General Purpose Heritage mix, Including a 90% grass 10% wildflower diverse mix with over 40 species.

Chestnut pale protective fencing
Temporary protection fence 1.0m ht attached to two strained wires and 100mm diameter driven pressure treated softwood posts at 1.8m max centres. To be left in place for 3 months to enable grass seed to establish.

Notes:
All planting to be sourced as specified. Notify CA of any recommendations for substitutions.

All trees to be double staked with 2no 50mmØ tree stake. Softwood, peeled chestnut, larch or oak, straight, free from projections and large or edge knots and with pointed lower end. No preservative treatment required. Position stakes close to tree on windward side and opposite, and drive vertically at least 300mm into bottom of pit before planting. 600mm height above ground.

Tree stakes secured using 'NatureTie' tree tie by GreenBlueUrban <https://www.greenblue.com/gb/products/naturetie/>
Secure tree firmly but not rigidly to stake with one tie within 50mm of top of stake.

Refer to LUC drawing no. 10335-LD-PLN-301 for details on topsoil and subsoil proposals.

Ensure all soft landscape works comply with the following:

- BS 4428:1989 - Code of practice for general landscape operations (excluding hard surfaces)
- BS 8545:2014 - Trees: from nursery to independence in the landscape. Recommendations

B	07.11.16	Planning revision - annotation added for french drain, slip wire moved west	JV	AM
C	13.07.16	Issued for Planning	JV	-
B	11.07.16	Revised Layout	MA	JV
A	15.06.16	First Issue	BP	JV

Iss	Date	Description	Dm	Chk

0

2

4

6

8

10m

LUC

LUC London

43 Chalton Street, London, NW1 1JD
+44 (0)20 7383 5784
london@landuse.co.uk
www.landuse.co.uk

Project

Gloucester gate Playground
The Regent's Park

Client

The Royal Parks

Scale @A1

1:200

Status

PLANNING

Drawing Title

Soft Landscape

Job Nr

10335

Drawing Nr

10335-LD-PLN-410

Issue

D