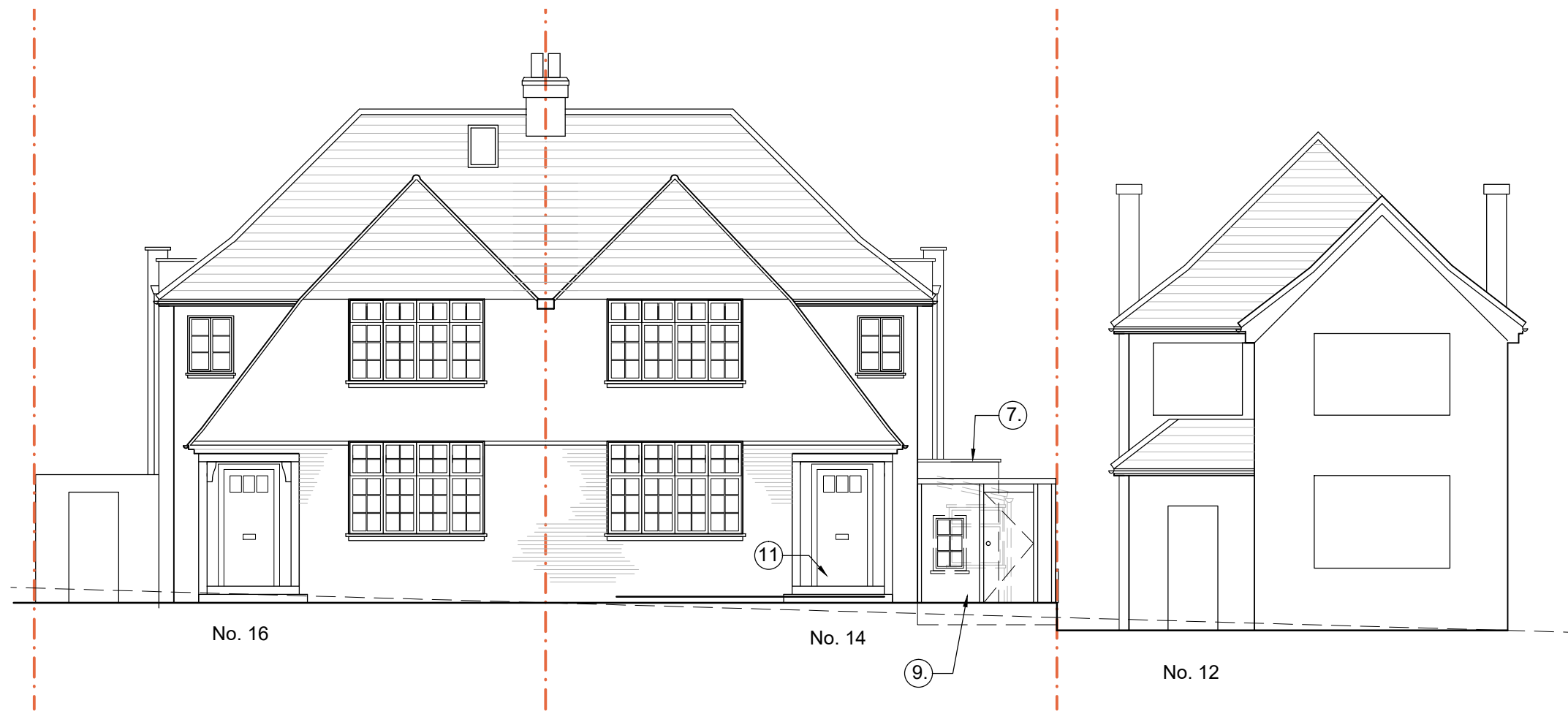


PROPOSED ELEVATIONS



PROPOSED WORKS

- 7. Side extension to accommodate kitchen, store room and stair to lower ground floor. Built in line with existing rear of house and set back from the street elevation. Finished in painted render to match existing with metal capping to parapet.
- 9. New painted timber clad wall and gate to side access route
- 11. Existing enclosure to porch removed to expose original front door

Scale line@ 1:100



Revisions	Project		Drawing	
	14 Makepeace Avenue Holly Lodge Estate		PROPOSED FRONT ELEVATION	
	Scale	Date	Drawing No	Revision
	1:100@A3	Dec 2018	226_EL-01	A
Rev A 20.03.19 Note regarding colour of metal frames removed				
<div><div><div>1. This drawing and all the designs herein are the sole property of HAT and may not be used without written authorisation.</div><div>2. These drawings are not for construction and the contractor must verify all site dimensions and must notify h&dd of any discrepancies.</div><div>3. Do not scale from this drawing all dimensions shown to be confirmed on site prior to construction</div><div>4. All measurements in metric</div></div><div><div><div>HNT</div><div>ARCHITECTURE / INTERIORS</div></div><div><div>22A Iliffe Yard London SE17 3QA tel: +44(0)207 703 2270 info@hatarch.co.uk www.hatarch.co.uk</div></div></div></div>				