

# 1 \_ details of planting species and density

## Product Data Sheet      Vegetation Product

### Sky Garden Sedum Blanket

### VGSB30



#### Technical Data:

##### Sky Garden Sedum Blanket

Precultivated UK grown vegetation blanket, containing between 8-12 species specifically chosen for extensive green roof applications. Grown on 20mm substrate base on a carrier membrane.

#### Physical Properties:

Composition:	Base - Geo-composite polypropylene mesh / coir blanket.
	Growing Medium - 20mm Sedum Mix.
	Vegetation - Mature Sedum plants grown from rhizome and seed.
Plant Height:	20-50mm, depending on growing stage of sedum.
Weight (dry)	15kg/m2
Weight (saturated):	20kg/m2
Consignment Size:	35m2 per Pallet
Colour:	Seasonal variation
Sizes:	1.1 x 2m



#### Species Sown:

12 Sedum Species Sown (\*subject to seasonal variations)

*Sedum acre*, *Sedum album*, *Sedum ellacombianum*, *Sedum floriferum*, *Sedum forsterianum*, *Sedum hybridum*, *Sedum kamtschaticum*, *Sedum montanum*, *Sedum reflexum*, *Sedum selskianum*, *Sedum sexangulare*, *Sedum spurium*.

#### System Considerations:

Instant vegetative cover for Extensive Sedum Blanket Systems.

Recommended minimum substrate depth 50mm

Low maintenance, shallow rooted and non-invasive vegetative cover.

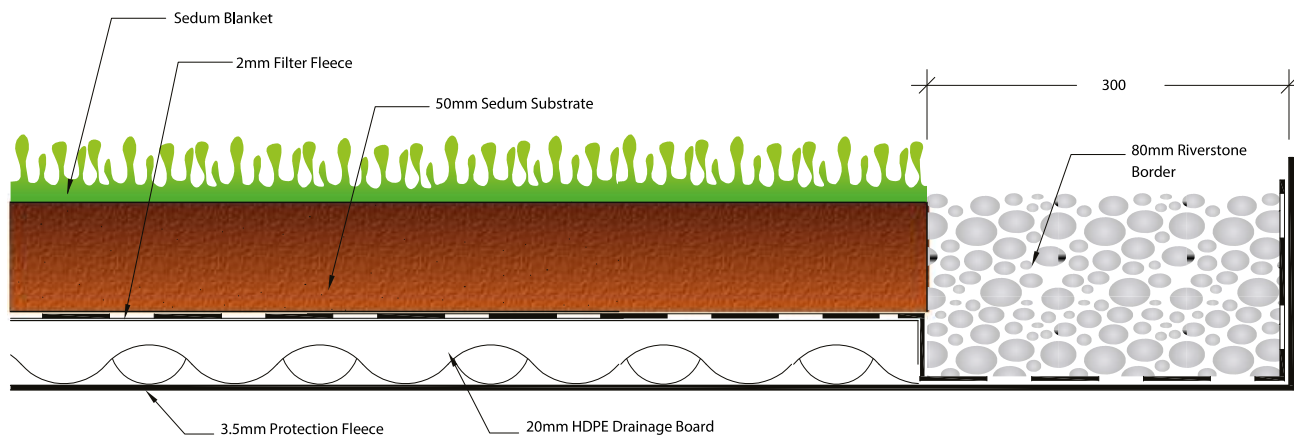
Sky Garden recommends annual maintenance of sedum green roofs to remove invasive/unwanted species to ensure system functionality and sustainability.


#### Full Specification Description:

High quality Sedum Blanket, grown in the UK, to provide the perfect low maintenance solution for extensive green roof systems, using a carefully selected mix of sedum species



## 2 \_ standard supplier details



 <p><b>01242 620905</b> <b>enquiries@sky-garden.co.uk</b> <b>www.sky-garden.co.uk</b></p> <p>7&amp;8 Keil Close Broadway Worcestershire WR12 7DP</p>	<div>Q37 Details</div> <div><div>- Protection Fleece<ul style="list-style-type: none"><li>- Material: Tensile geo-synthetic protection layer</li><li>- Thickness: 3.5mm</li></ul></div><div>-Drainage Layer<ul style="list-style-type: none"><li>- Material: Rigid HDPE drainage board</li><li>- Depth: 20mm</li></ul></div><div>-Filter Fleece<ul style="list-style-type: none"><li>- Material: 2mm non woven geotextile</li></ul></div></div>		<div>- Sedum Substrate<ul style="list-style-type: none"><li>- Material: low nutrient, free draining root zone</li><li>- Depth: 50mm</li></ul></div> <div>-Sedum Blanket<ul style="list-style-type: none"><li>-Planting Mix: 8-12 sedum species specifically chosen for green roof applications</li></ul></div> <div>Wet Weight 91kg m2 approx</div> <div>Dry Weight 70kg m2 approx</div>	<div>System Name &amp; No. Sedum Blanket System (SGS02)</div>	
			<div>Drawn by: CST</div>	<div>Scale: Do Not Scale</div>	
			<div>Contact: enquiries@sky-garden.co.uk 01242 620905</div>		



Sky Garden's UK grown blankets have been developed specifically for extensive living roof systems, producing an attractive range of flora that in turn attracts a wide range of fauna on to the roof.

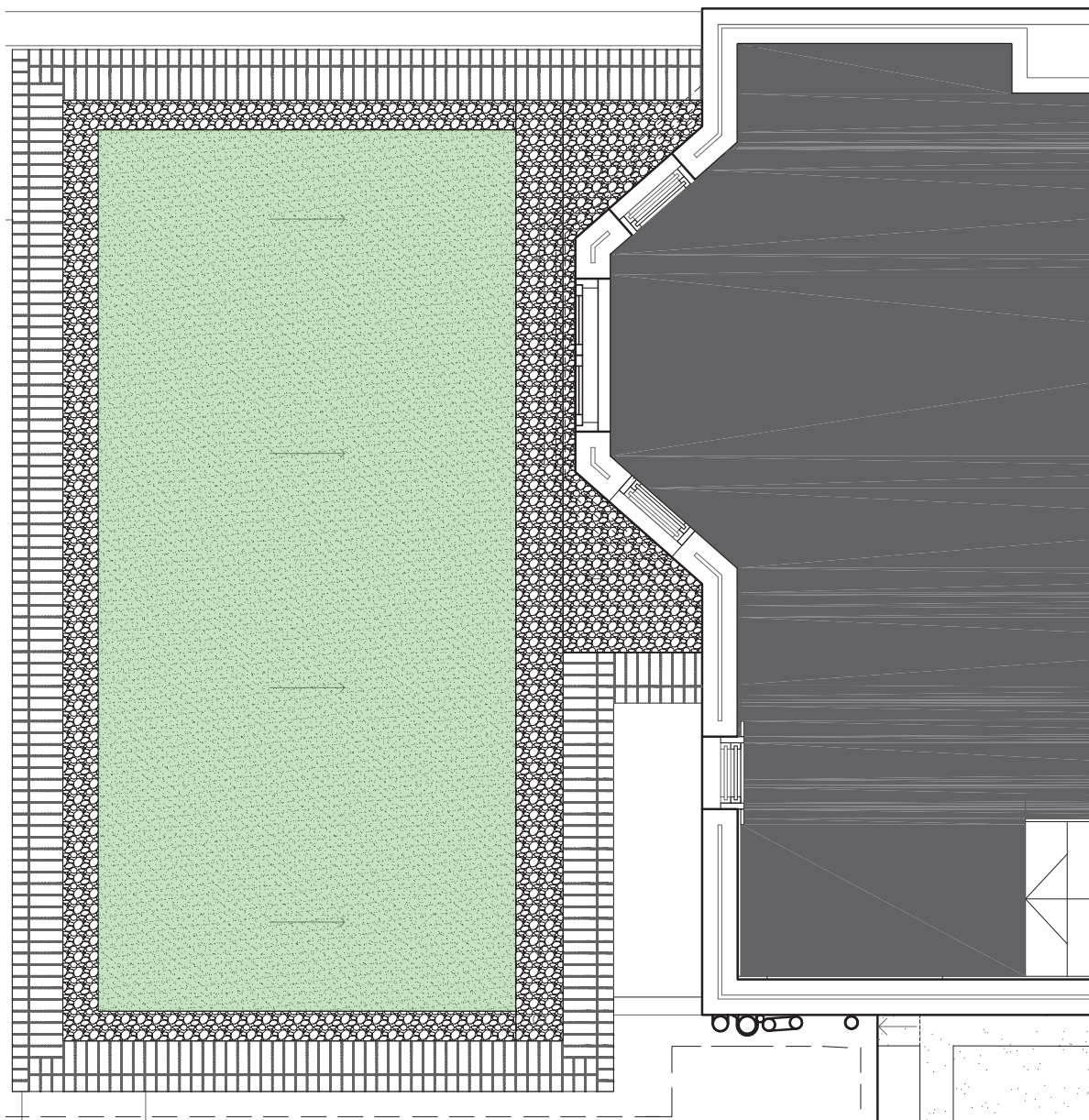
Sky Garden's blanket substrate is a blend of recycled crushed brick and organic material, allowing for a free draining low nutrient and moisture retentive growing medium.

Sky Garden's water retention and drainage boards are designed specifically for living roofs. The bonded filter fleece prevents any blockages, the retention cups store water for healthy growth and the perforations allow for drainage of excess water.

The protection fleece adds an extra layer of defence to the waterproofing layer.



## 2 \_ location for green sedum roof at proposed extension



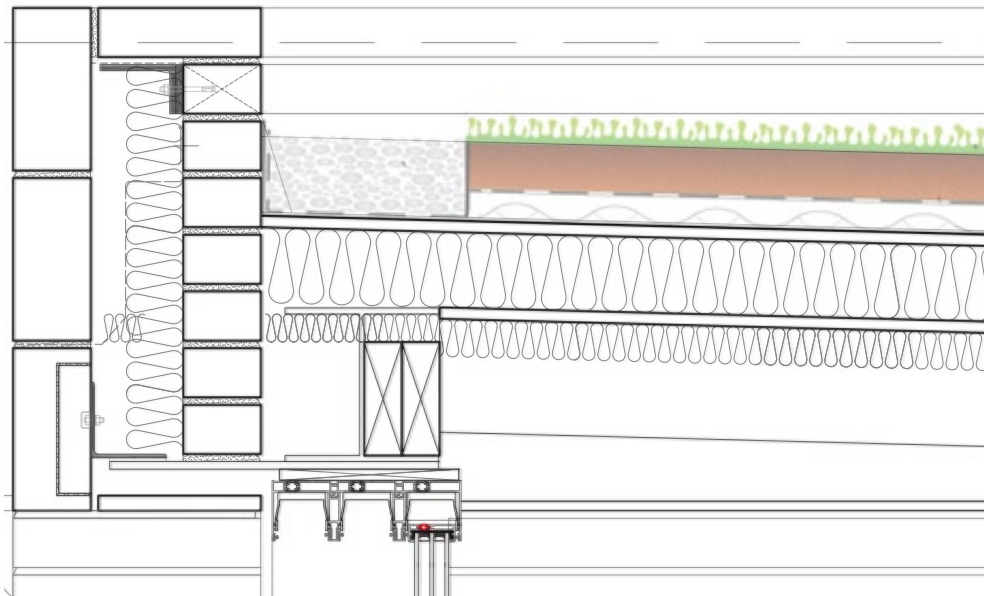
roof plan at proposed rear extension - extent of green roof indicated in green



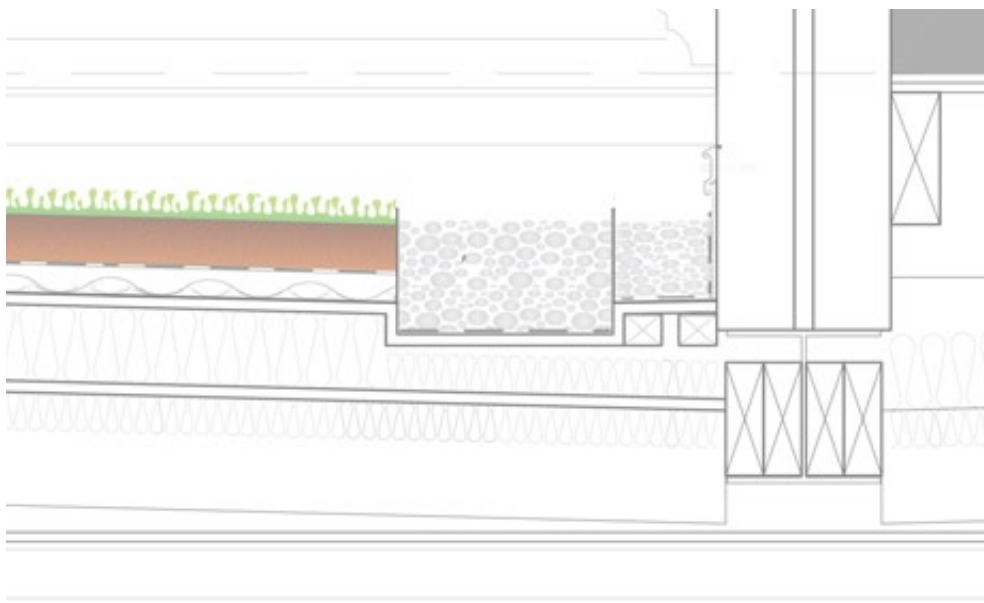
view of rear elevation at proposed rear extension



## 2 \_ typical section detail at 1:10



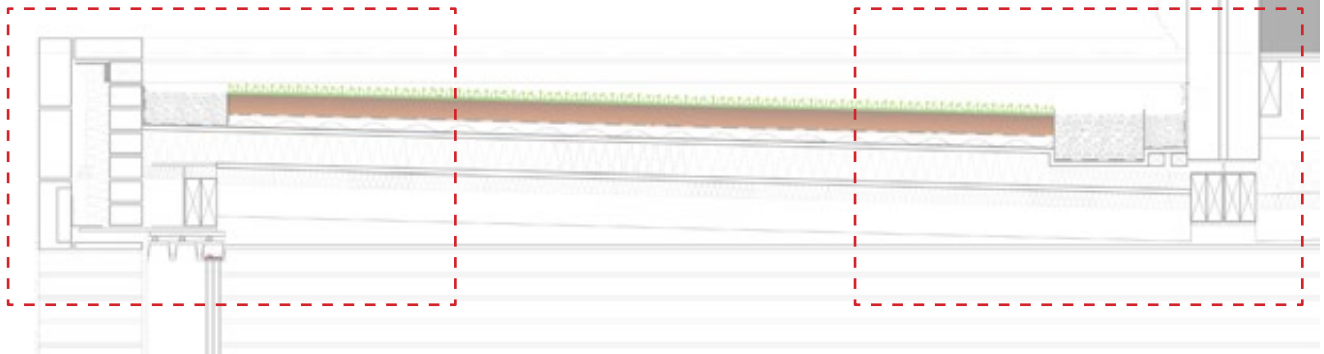
detail 1 \_ sedum roof detail at brick parapet \_ scale 1:10



detail 1 \_ sedum roof detail at junction with existing house \_ scale 1:10

detail 1

detail 2



sedum roof detail at junction with existing house \_ scale 1:10



### 3 \_ proposed schedule of maintenance

---



Sky Garden Ltd, Unit 4 Beta, Orchard Industrial Estate, Toddington, Glos, GL54 5EB  
P: 01242 620905 F: 01242 620739  
www.sky-garden.co.uk

#### **Maintenance Guidelines – Sedum Green Roofs.**

Following the installation of your Sky Garden living roof, a maintenance schedule should be set up to ensure its upkeep and longevity. It is important to note, that whilst our systems are generally low maintenance, this does not mean they require 'no' maintenance. We recommend some basic care and attention to your roof, twice per year and particularly in the first six months after installation.

#### **1. Sedum**

Please note: Sedum plants are not green all year around. It is perfectly normal for the blankets to change colour through the seasons, particularly when under stress, through lack of water or nutrients, or when subjected to prolonged heat or sub-zero conditions. Plants generally flower from late spring to mid summer, which is followed by a limited foliage die back of certain varieties during the winter months. Please do not be alarmed! This is nature at work and all plants will regenerate prolifically come the following Spring, provided routine maintenance has been carried out to ensure that invasive weeds have been removed and fertilizer applied where needed.

##### **a. Sedum Blanket**

It is important to note that nothing grows without some care and attention throughout the year. Annual maintenance concentrates on the removal of spent flower heads, seed heads, grasses and other intrusive weeds such as Buddleia, nettle, dock and willow herb, typically at the end of Summer/Autumn. This serves to promote the healthy development of the blanket as competing plants with aggressive root systems are removed.

The establishment of non-native, invasive plants can lead to reduced food availability and therefore suitable sedum habitat loss as a direct result. In addition, invasive plants are often unpalatable to native herbivores like invertebrates.

##### **b. Sedum Cuttings & Plugs**

When using sedum cuttings or plugs, due care and attention is crucial until the cuttings or plugs have fully established. Plugs and cuttings are much more exposed and vulnerable to the elements and to begin with, the exposed substrate provides the perfect environment for seed germination and arrival of unwanted weed seed. Cuttings and plugs are not suitable for pitched roofs over 10 degrees without special measures to retain the vegetation during establishment.

#### **2. Irrigation**

It is imperative that your living roof installation is regularly watered during the first year after installation and without supplementary water the sedum vegetation is at risk of dying, particularly in the first three months after installation. Watering on a routine basis is essential to ensure the living roof establishes itself as quickly as possible and should be carried out



### 3 \_ proposed schedule of maintenance (cont.)

---



Sky Garden Ltd, Unit 4 Beta, Orchard Industrial Estate, Toddington, Glos, GL54 5EB  
P: 01242 620905 F: 01242 620739  
www.sky-garden.co.uk

once or twice a week, using a drip-line or sprinkler system, until the newly planted area is fully saturated and subsequently kept moist until the root systems are fully developed.

For pitched roof systems, Irrigation is essential as the roof slope and wind/sun exposure can result in the plants being deprived of water and is recommended for connections at roof level to be available for any subsequent drought periods.

#### 3. Weather

Regular checks should be undertaken, to ensure that high winds or heavy rainfall has not dislodged any of the living roof system. This is particularly important during the first few months after installation, as the plants will not have fully rooted into the sub-layers and are therefore more vulnerable. Movement of the system is unlikely and usually only occurs in extreme weathers. Should it become dislodged, provided it has not been damaged, simply move it back into place and water in well.

#### 4. Fertiliser

When low in nutrients, sedum generally turns reddish they are showing they signs of being nutrient deficient. When this occurs, Sky-Garden recommends an annual application of fertiliser to ensure optimum plant performance. Fertiliser can be obtained directly from Sky-Garden. Please enquire at our sales office at the above contact number for further information.

#### 5. Roof Checks

It is essential to check all gutters and drainage outlets to ensure against blockages. Water collecting on a roof can have detrimental effects on the vegetation. We will also inform the client of any issues arising with any roof lights, outlets, man safe systems and so on, while we are on the roof. Although we are experts in none of these fields our experience allows for us to spot obvious problems that may be arising. An extra pair of eyes and ears on your roof!

All of the above issues can be controlled and eradicated using Sky Garden's tried and tested maintenance routines, which can be tailored to suit the specific needs of roof and client. We offer annual maintenance packages at competitive prices to suit your specific needs. Please call the office for further details.

**\*N.B Due care and attention should be taken when carrying out routine maintenance and inspections to your living roof. Some materials can be slippery when wet or frozen and we recommend safety harnesses be worn and secured ladders used at all times. If you are in any doubt, please check government guidelines for working at heights.**



# ARCHITECTURE > ASSEMBLY

Greenworks Building – 3rd Floor  
Dog and Duck Yard  
Princeton Street  
London - UK  
WC1R 4BH

[www.arc-a.com](http://www.arc-a.com)  
[info@arc-a.com](mailto:info@arc-a.com)