

SUMMARY

- Mr Bown has appointed JDW Architects to design a garden room for his property
- It is estimated that the garden room would have a build time of 7-10 days
- No trees will need to be removed as a result of this build, as there are no trees on the build site
- There are 3 trees within falling distance so we will therefore ensure the build does not impact any underlying root systems
- We've included in this document details on the proposed method for building the foundation (see next page)
- The proposed method will ensure protection of the underlying roots by:
 - Limiting the depth of the foundation
 - Hand-digging holes to allow the local manipulation required to avoid impacting roots
 - Protecting any roots uncovered through the build
 - Lining holes for the build with plastic to ensure no concrete mix comes into contact with root systems
 - Mixing the concrete away from the site / roots (and on a covered surface)
 - Establishing continuous monitoring of the build practices to ensure no trees are impacted

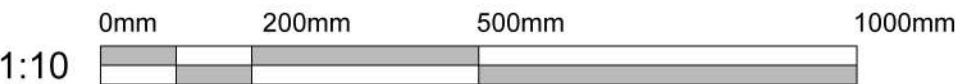
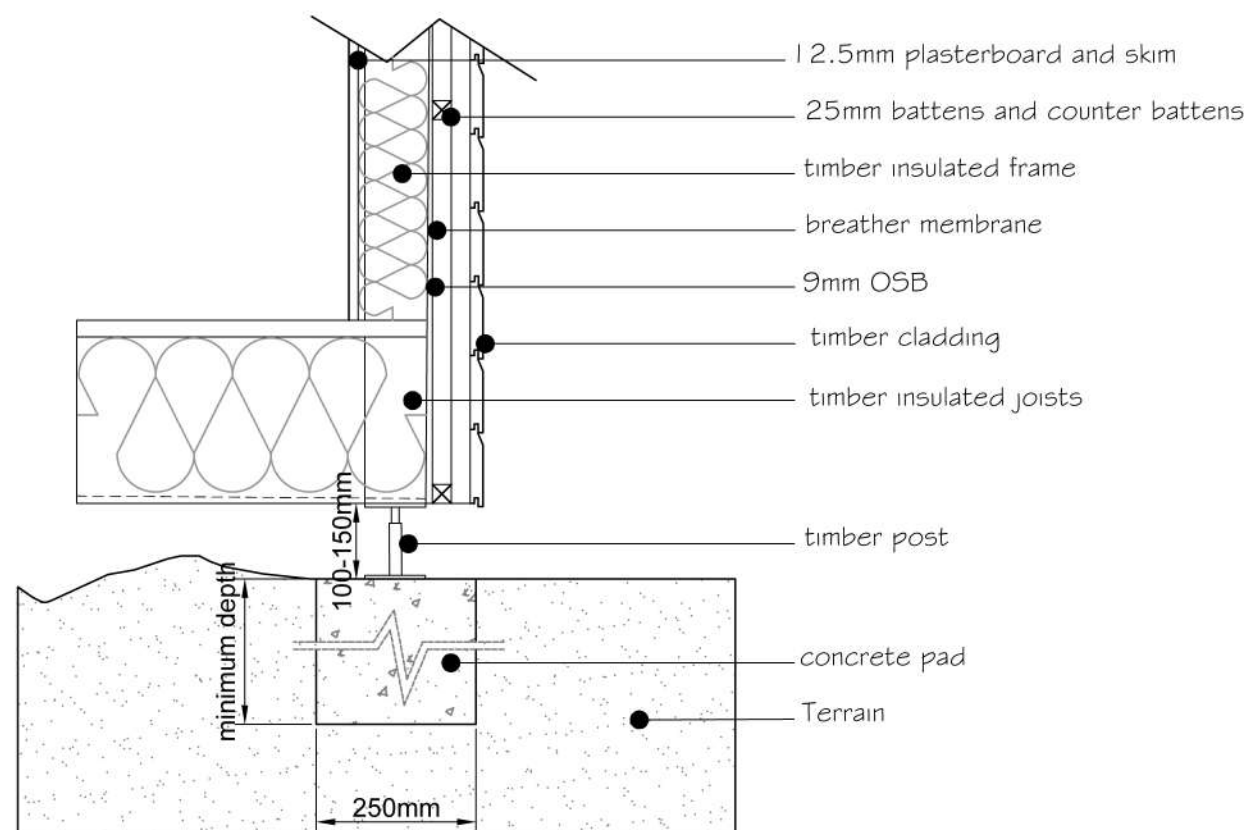


FOUNDATION DESIGN AND METHOD STATEMENT

TOOLS FOR THE BUILD

				
Narrow Face Spade & Hand Trowel	Stiff Hand Brush	Hi Vis Paint (for spot marking roots)	Hessian (to wrap exposed roots)	Duct Tape (to secure hessian)

FOUNDATION DESIGN



METHOD STATEMENT

- The area of the garden room will be laid out as agreed within the planning consent. The site will not require any tree removals.
- Holes for the concrete pads will be drilled using an Auger, to standard depths which can vary depending on the make-up of the sub soil.
- Holes under the tree canopy will be dug by hand so as to not disturb any root systems, and if necessary relocated to avoid a tap root. Holes are hand-dug to allow local manipulation on site to reflect any roots which may be uncovered. Holes will be lined with plastic to make sure no concrete mix comes in contact with any roots systems.
- Caution will be taken while digging foundations to ensure that no damage is made to any roots that have not yet been uncovered. Care will be taken to trace the path of any roots uncovered, using a stiff hand brush. All roots above 25mm in diameter will be retained. Any roots uncovered will be wrapped in hessian to ensure protection and will not be left exposed for more than 12 hours.
- The foundation holes will be tamped down to ensure that they are level before inserting a plastic protective membrane prior to pouring concrete.
- Care will be taken to avoid spillage of the Concrete Mix / Powder using protective membrane where necessary at the time of mixing. The concrete itself will be mixed away from the site and any exposed roots on a protected surface.
- The timber post and frame construction will then be built up off adjustable post bases which will be fixed to the pre poured concrete pads. Additional care will be taken to ensure that no servicing to the garden room will impact the root system.
- There will be a continuous monitoring of the build practices to ensure trees are protected throughout.

BLOCK PLAN OVERVIEW



LEGEND & DESCRIPTION

- Plot Location:**
 - The garden dimensions are approximately: 26m (length) x 8m (width)
- Tree Location:**
 - 3 trees are located within adjacent properties within 'falling' distance of the structure
- Structure Location:**
 - Proposed structure location
 - dimensions are 6.6m (length) x 4.5m (width) x 3.3m (height)
 - The structure will be built within 80 cm of the side boundaries and 1m of the rear boundary

PROPOSED GARDEN ROOM BUILD SITE



- No trees will need to be removed to construct the garden room
- There are 3 trees within falling distance of the proposed build site
- It will be ensured that any roots under the build site are protected from impact (see previous page)
- The build will not impact light exposure to these trees as the room will be a single story



Proposed building location