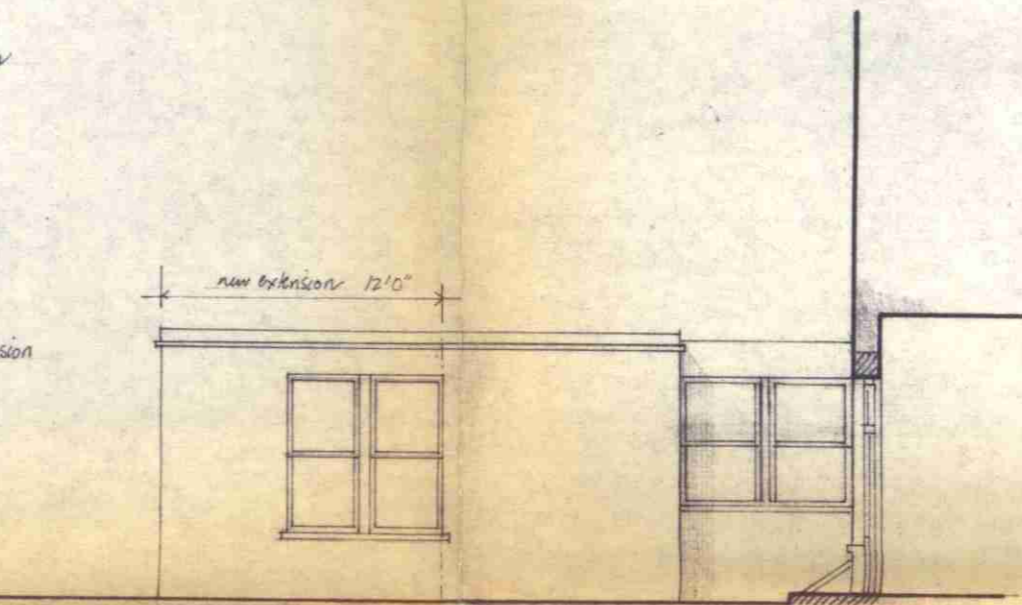
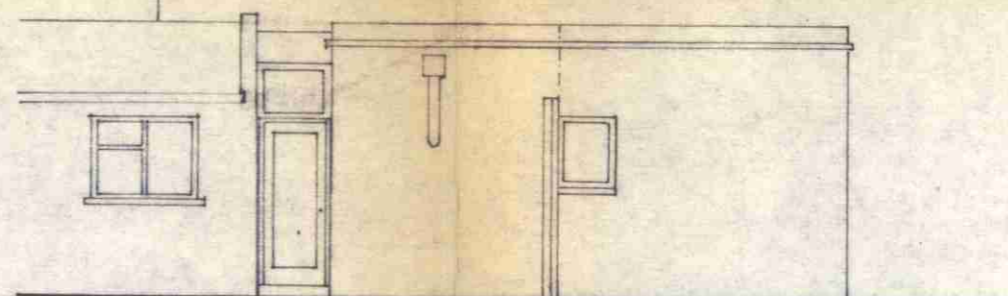


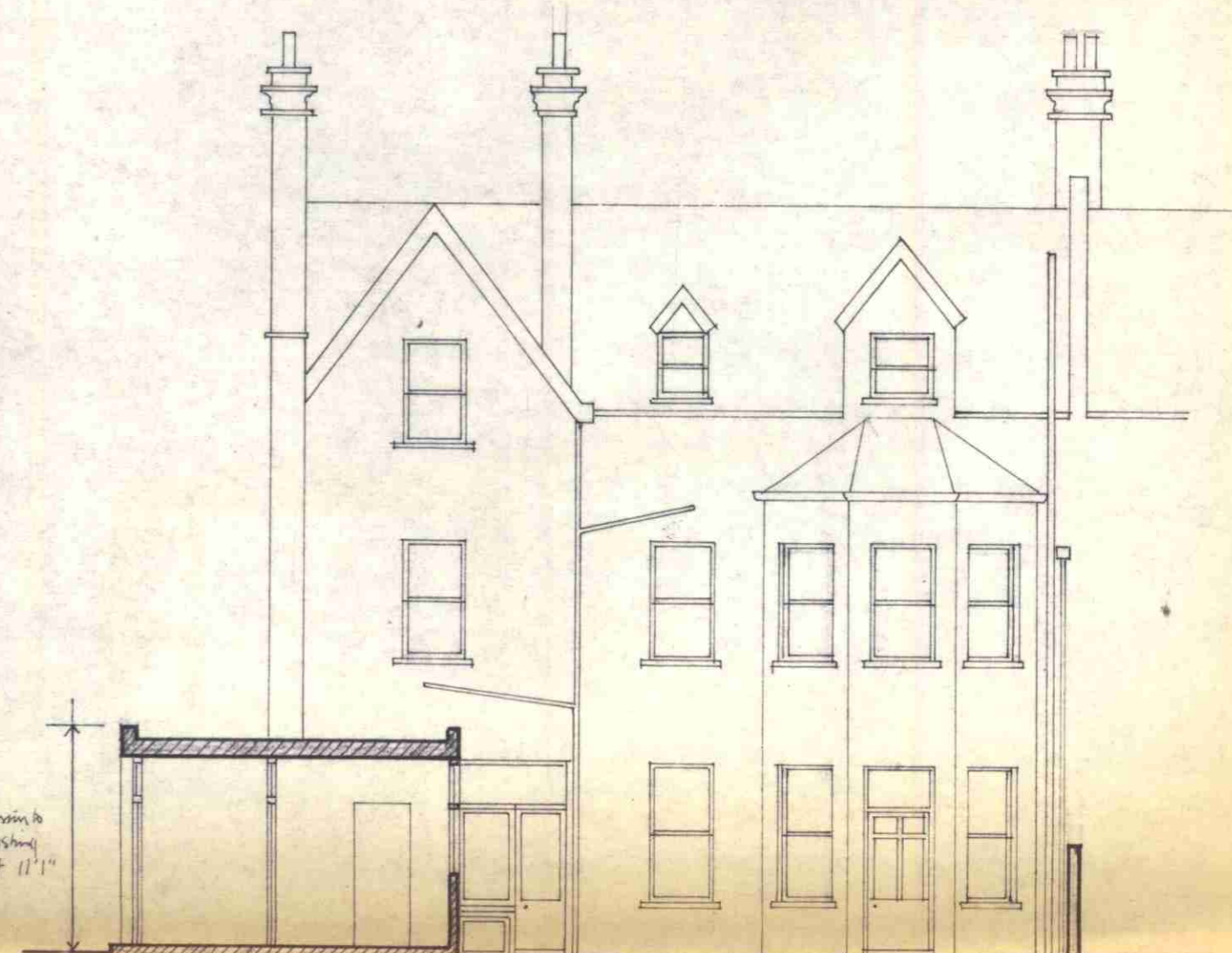
ground floor plan



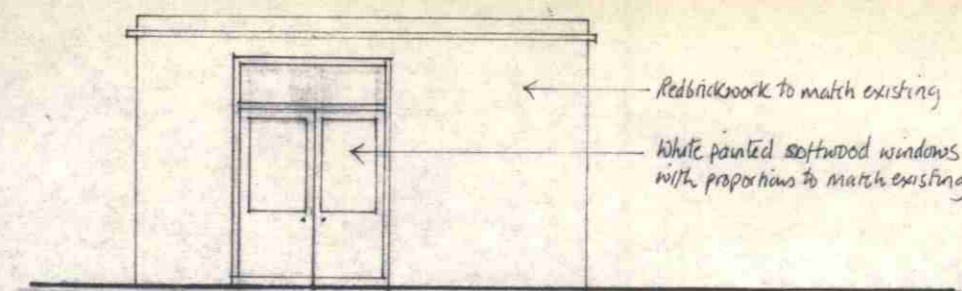
west elevation



east elevation

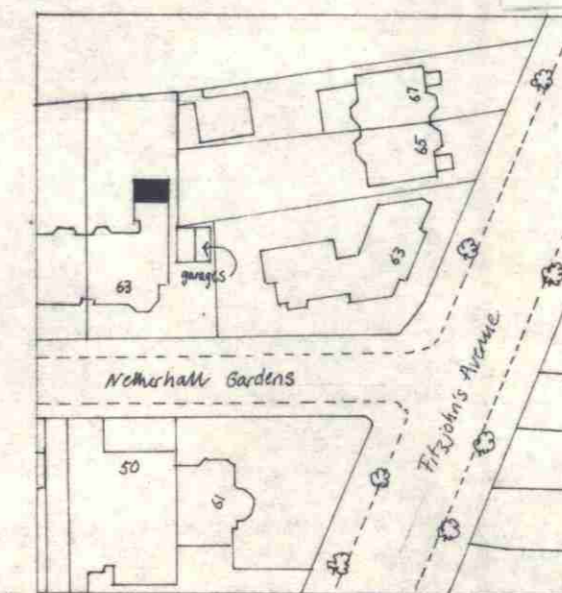


cross section showing new window to breakfast room



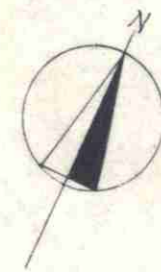
north elevation

CTP/F7/6/3/8325



Site Plan 1:1250

Revision a: 27 Jan 70
Site plan, additional dimensions + description of materials added for TP Application.



LONDON BOROUGH OF CAMDEN
PLANS APPROVED
~~DISAPPROVED~~
17 MAR 1970
ON BEHALF OF THE COUNCIL

BADEN-POWELL ARCHITECTS 38 CHARLOTTE STREET W1 01-636 5642
DATE 2 Jan 70
SCALE 1/8" = 1'0"

65 Netherhall Gardens NW3 48/1a