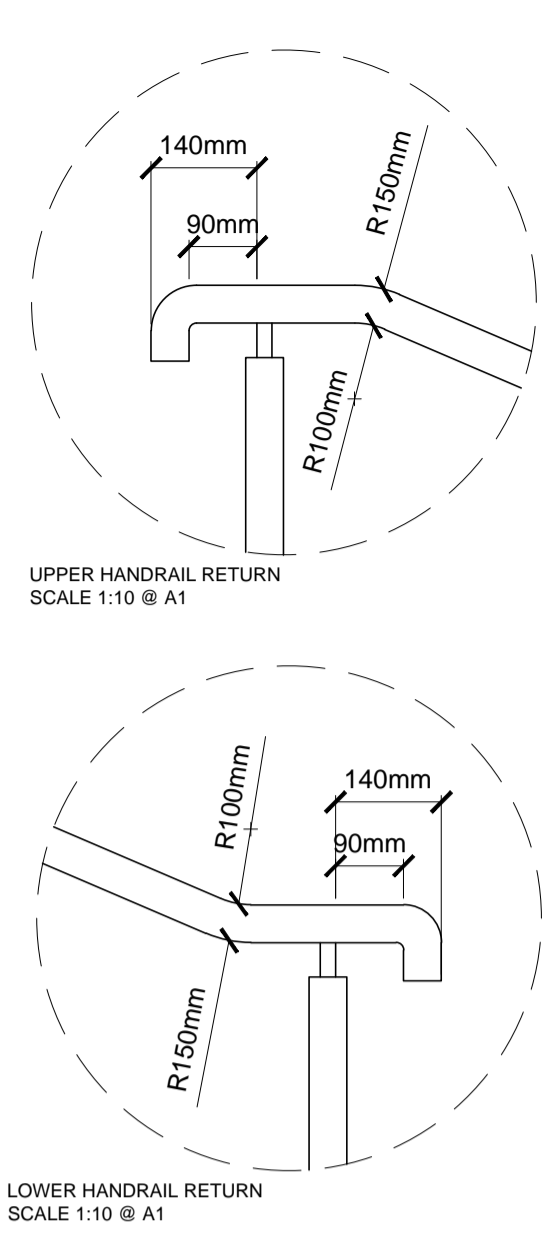


SECTION

D53 HANDRAIL TO STEPS No.1
SCALE 1 : 20



UPPER HANDRAIL RETURN
SCALE 1:10 @ A1

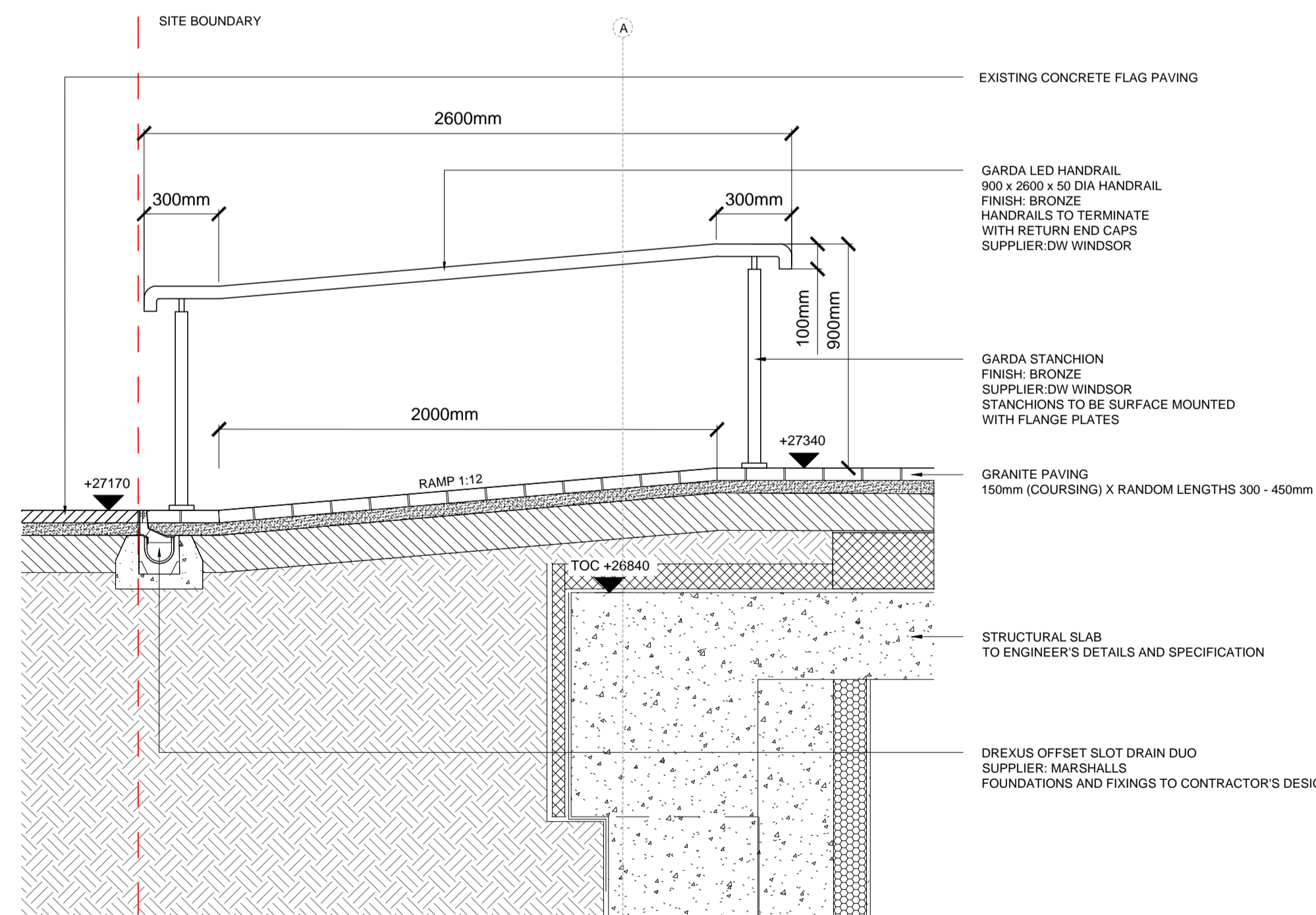
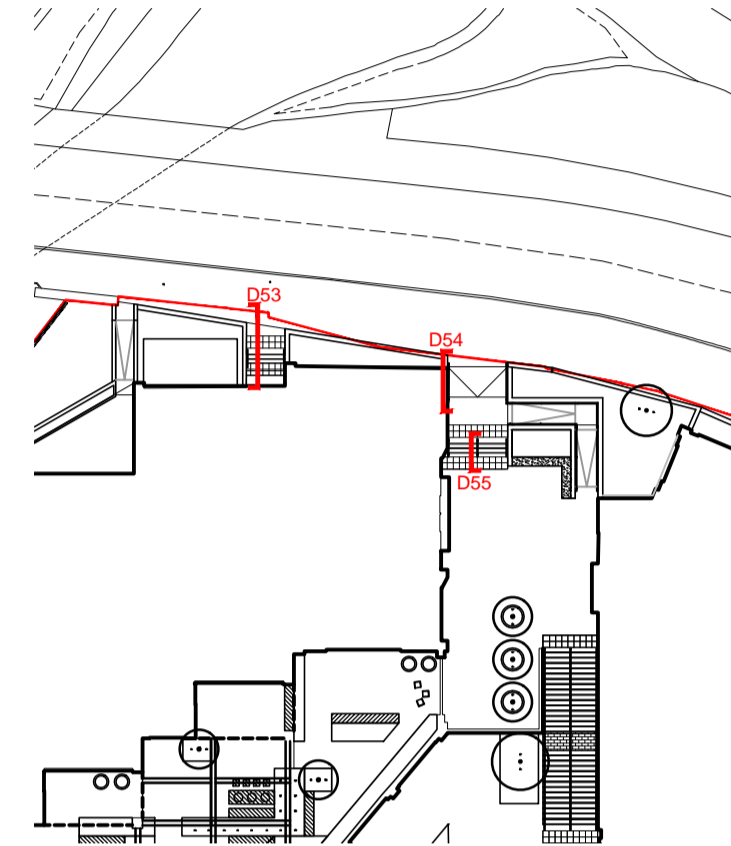
LOWER HANDRAIL RETURN
SCALE 1:10 @ A1

LEGEND

1. This drawing is to be read in conjunction with all other drawings and specifications.
2. Do not scale off this drawing. Written dimensions to be taken only.
3. Any discrepancies found between this drawing and other drawings and specifications in the construction documents must be referred to the Landscape Architect prior to work commencing.
4. This drawing must not be copied in whole or in part without written consent of LDA design.
5. These drawings are for finishes only. All foundation, fixing, paving depths and drainage details to be provided by others.
6. All dimensions in mm unless otherwise stated.
7. Where dimension sizes of units are given they state length x width x depth.

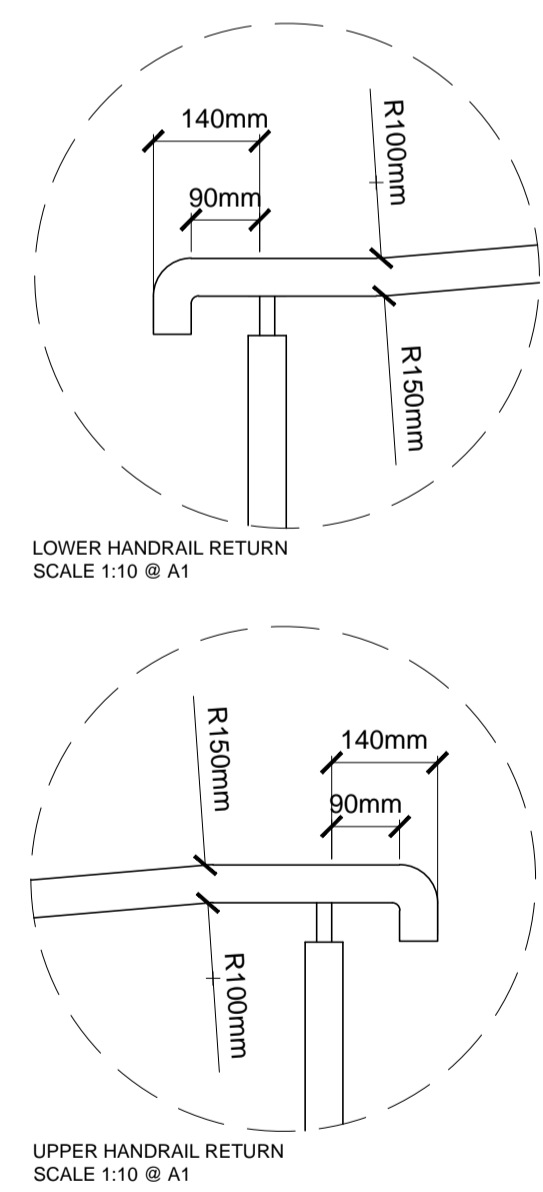
NOTES:

- REFER TO GENERAL ARRANGEMENT LAYOUT AND REFERENCE PLANS DWG 5657_100-104
- REFER TO HARDWORKS LAYOUT AND REFERENCE PLANS DWG 5657_200
- REFER TO FURNITURE LAYOUT AND REFERENCE PLANS DWG 5657_400
- REFER TO SOFTWARES LAYOUT AND REFERENCE PLANS DWG 5657_300
- TO BE READ IN CONJUNCTION WITH LANDSCAPE ARCHITECT'S EXTERNAL WORKS SPECIFICATION
- TO BE READ IN CONJUNCTION WITH ARCHITECT'S GA DRAWINGS 0010 SERIES



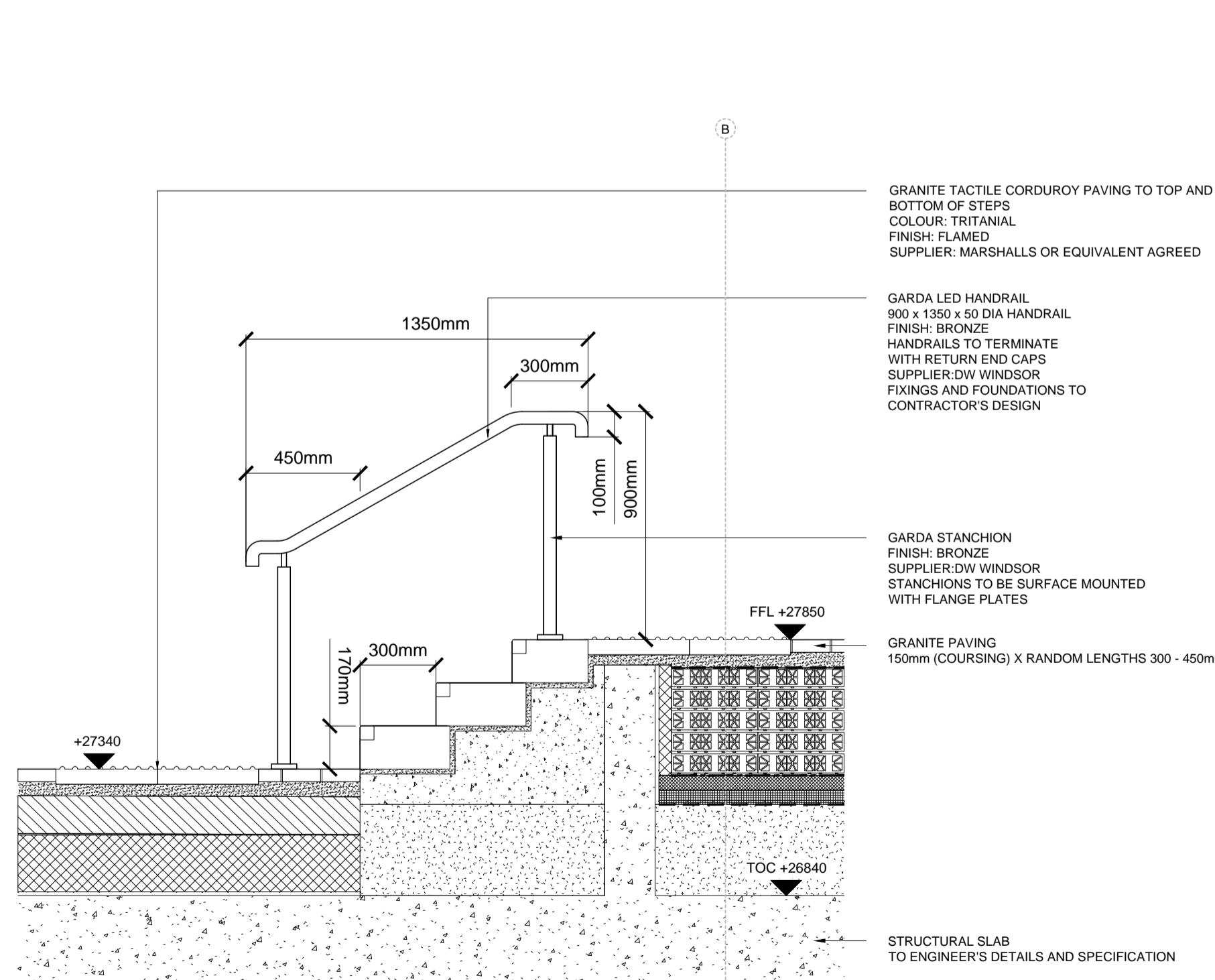
SECTION

D54 HANDRAILS TO RAMP
SCALE 1 : 20



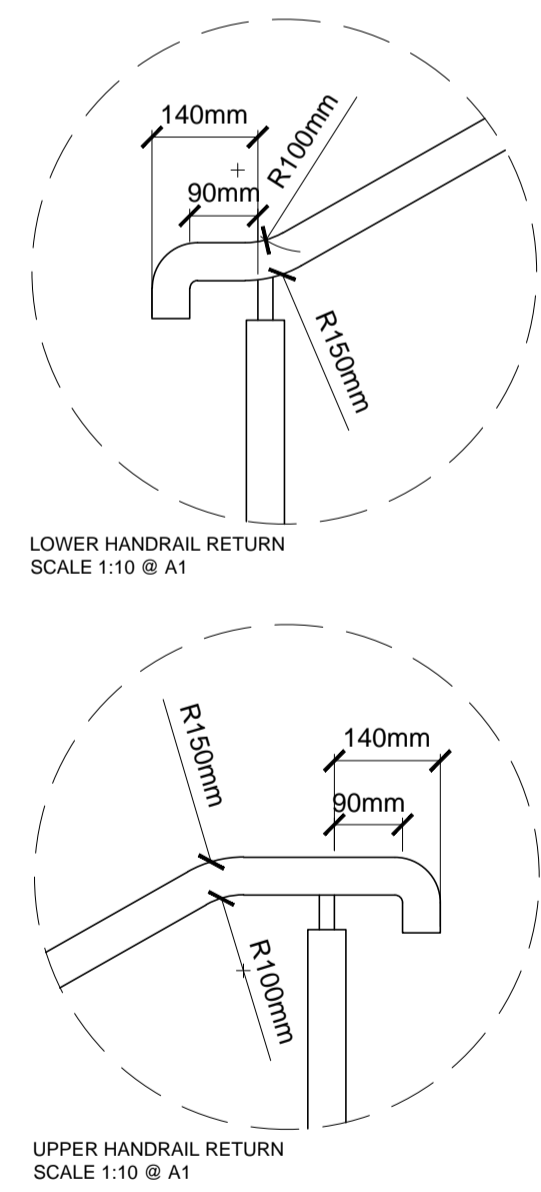
LOWER HANDRAIL RETURN
SCALE 1:10 @ A1

UPPER HANDRAIL RETURN
SCALE 1:10 @ A1



SECTION

D55 HANDRAILS TO STEPS No.2
SCALE 1 : 20



LOWER HANDRAIL RETURN
SCALE 1:10 @ A1

UPPER HANDRAIL RETURN
SCALE 1:10 @ A1

READ THIS FIRST

- Note for Contractors**
This drawing should be considered along with the risk information contained in the CDM Pre Construction Information. This information will include details of the SIGNIFICANT risks which LDA Design has identified which may arise from constructing their designs shown on this drawing. A Competent Contractor should be aware of the typical risks associated with doing this work.
- Note for Workers**
DO NOT START YOUR WORK unless you know the Risks and Controls relating to the work on this drawing (including SAFE SEQUENCES OF WORK and EQUIPMENT).
- Do not issue copies of parts of this drawing without the above Note for Workers (unless you are sure that the Workers can undertake the work safely).

REV.	DESCRIPTION	DATE
B	Construction issue	AW 21/01/19
A	Granite step modules added	AW 11/09/17

LDA DESIGN

PROJECT TITLE
101 Camley Street

DRAWING TITLE
Stage 5: Construction
Handrails
Sheet 01

ISSUED BY	Exeter	T: 01392 260430
DATE	Jan 2019	DRAWN A/W
SCALE	A1 1:20	CHECKED R/A
STATUS	Construction	APPROVED R/A

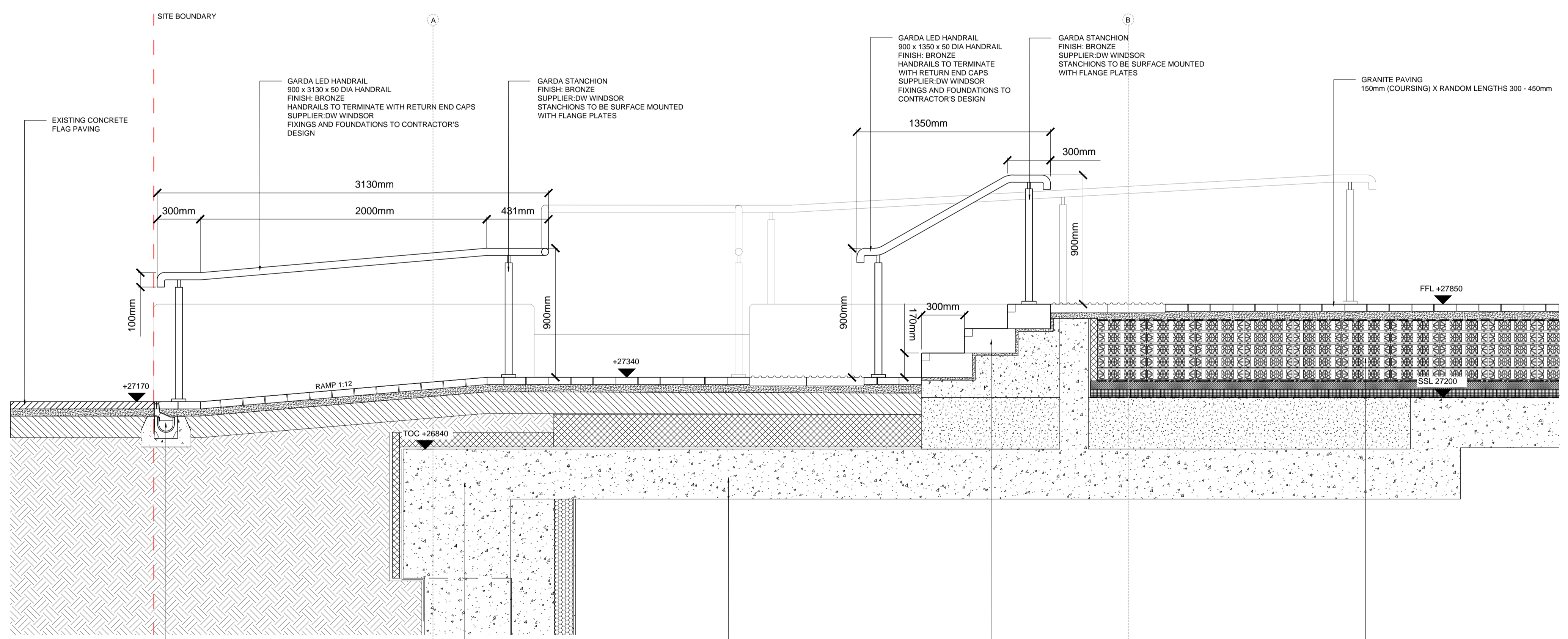
DWG. NO 5657_330

No dimensions are to be scaled from this drawing. All dimensions are to be checked on site. Area measurements for indicative purposes only.
© LDA Design Consulting LLP. Quality Assured to BS EN ISO 9001 : 2000
Sources: Ordnance Survey





ILLUSTRATIVE VIEWS OF LOOPED HANDRAIL TO CAMLEY STREET ENTRANCE (CONTEXT NOT SHOWN)



SECTION

DREXUS OFFSET SLOT DRAIN DUO
SUPPLIER: MARSHALLS
FOUNDATIONS AND FIXINGS TO CONTRACTOR'S DESIGN

CAPPING BEAM
TO ENGINEER'S DETAILS AND SPECIFICATION

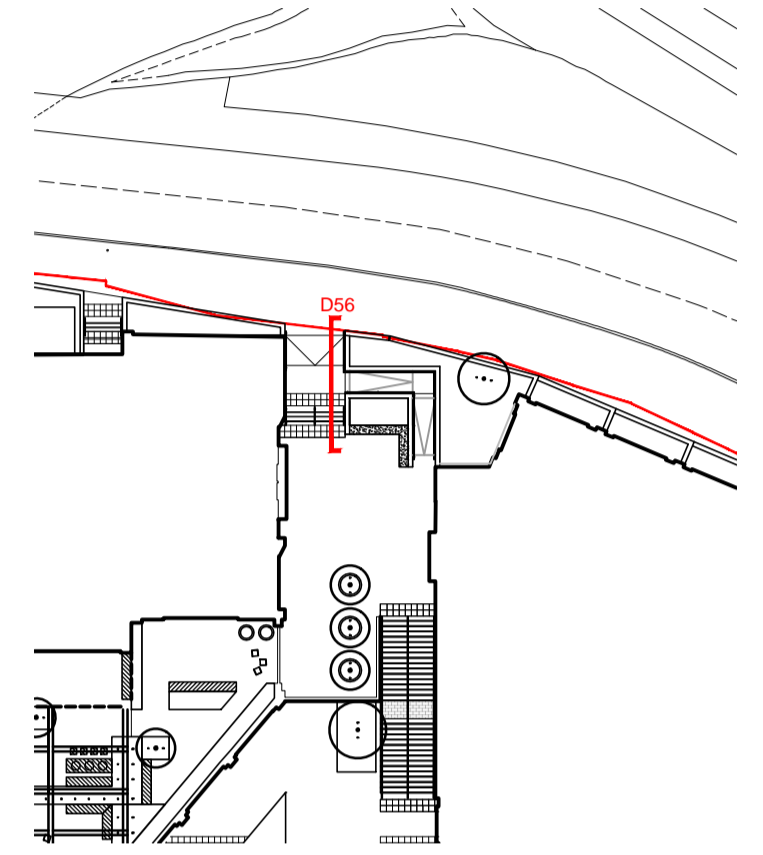
STRUCTURAL SLAB
TO ENGINEER'S DETAILS AND SPECIFICATION

GRANITE STEP MODULE WITH
INTEGRATED GRANITE WARNING STRIP
GRANITE STEPS: ROYAL WHITE, FLAMED FINISH
800MM X 350MM X 170MM
GRANITE WARNING STRIP: CRYSTAL BLACK, FLAMED FINISH
SUPPLIER: HARDSCAPE OR EQUIVALENT AGREED

TYPICAL BUILD UP TO UPPER GROUND FLOOR

D56 HANDRAIL TO CAMLEY STREET ENTRANCE No.1
SCALE 1 : 20

- LEGEND
1. This drawing is to be read in conjunction with all other drawings and specifications.
 2. Do not scale off this drawing. Written dimensions to be taken only.
 3. Any discrepancies found between this drawing and other drawings and specifications in the construction documents must be referred to the Landscape Architect prior to work commencing.
 4. This drawing must not be copied in whole or in part without written consent of LDA design.
 5. These drawings are for finishes only. All foundation, fixing, paving depths and drainage details to be provided by others.
 6. All dimensions in mm unless otherwise stated.
 7. Where dimension sizes of units are given they state length x width x depth.
- NOTES:
- REFER TO GENERAL ARRANGEMENT LAYOUT AND REFERENCE PLANS DWG 5657_100-104
- REFER TO HARDWORKS LAYOUT AND REFERENCE PLANS DWG 5657_200
- REFER TO FURNITURE LAYOUT AND REFERENCE PLANS DWG 5657_300
- REFER TO SOFTWARES LAYOUT AND REFERENCE PLANS DWG 5657_400
- TO BE READ IN CONJUNCTION WITH LANDSCAPE ARCHITECT'S EXTERNAL WORKS SPECIFICATION
- TO BE READ IN CONJUNCTION WITH ARCHITECT'S GA DRAWINGS 0010 SERIES



READ THIS FIRST

- Note for Contractors**
This drawing should be considered along with the risk information contained in the CDM Pre Construction Information. This information will include details of the SIGNIFICANT risks which LDA Design has identified which may arise from constructing their designs shown on this drawing. A Competent Contractor should be aware of the typical risks associated with doing this work.
- Note for Workers**
DO NOT START YOUR WORK unless you know the Risks and Controls relating to the work on this drawing (including SAFE SEQUENCES OF WORK and EQUIPMENT).
- Do not issue copies of parts of this drawing without the above Note for Workers (unless you are sure that the Workers can undertake the work safely).

REV.	DESCRIPTION	APP.	DATE
B	Construction issue	AW	21/01/19
A	Granite step modules added	AW	11/09/17

LDA DESIGN

PROJECT TITLE
101 Camley Street

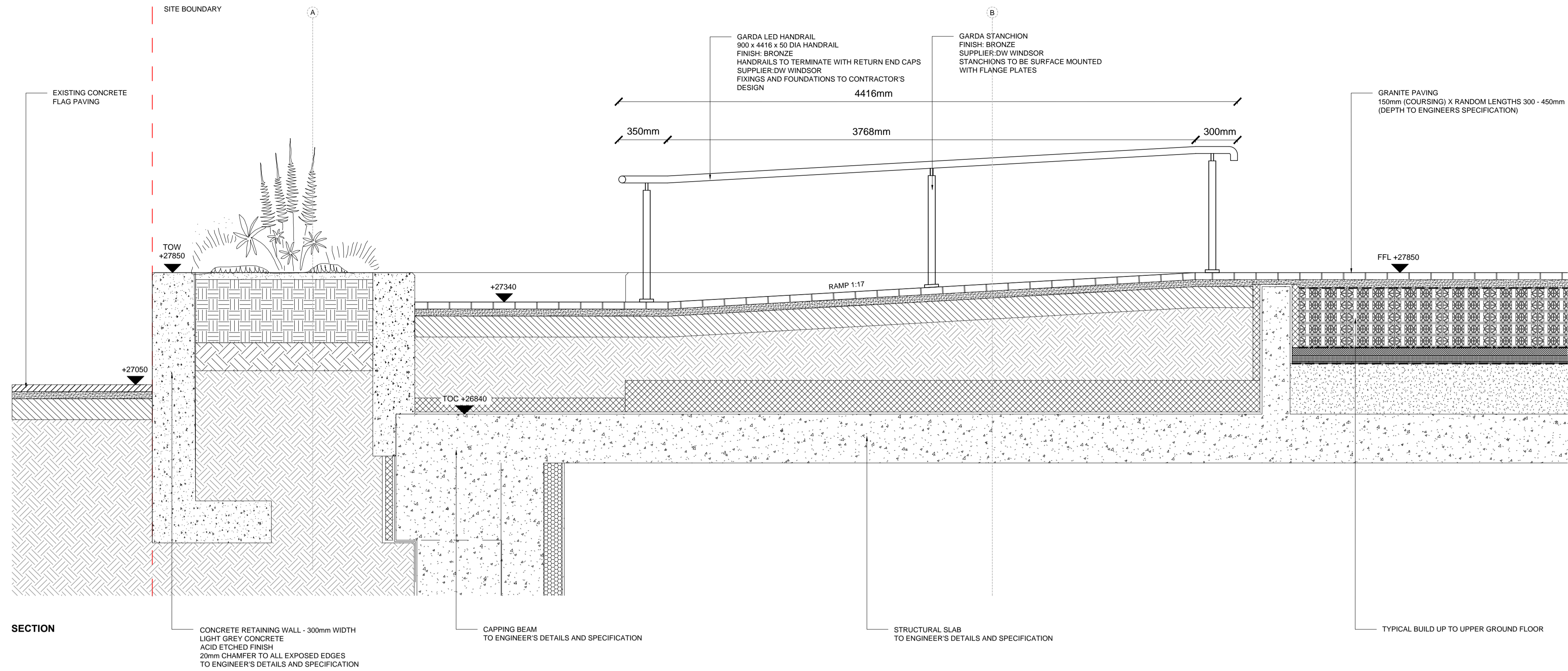
DRAWING TITLE
Stage 5: Construction
Handrails
Sheet 02

ISSUED BY	Exeter	T: 01392 260430
DATE	Jan 2019	DRAWN AW
SCALE	1:20	CHECKED RAs
STATUS	Construction	APPROVED RAs

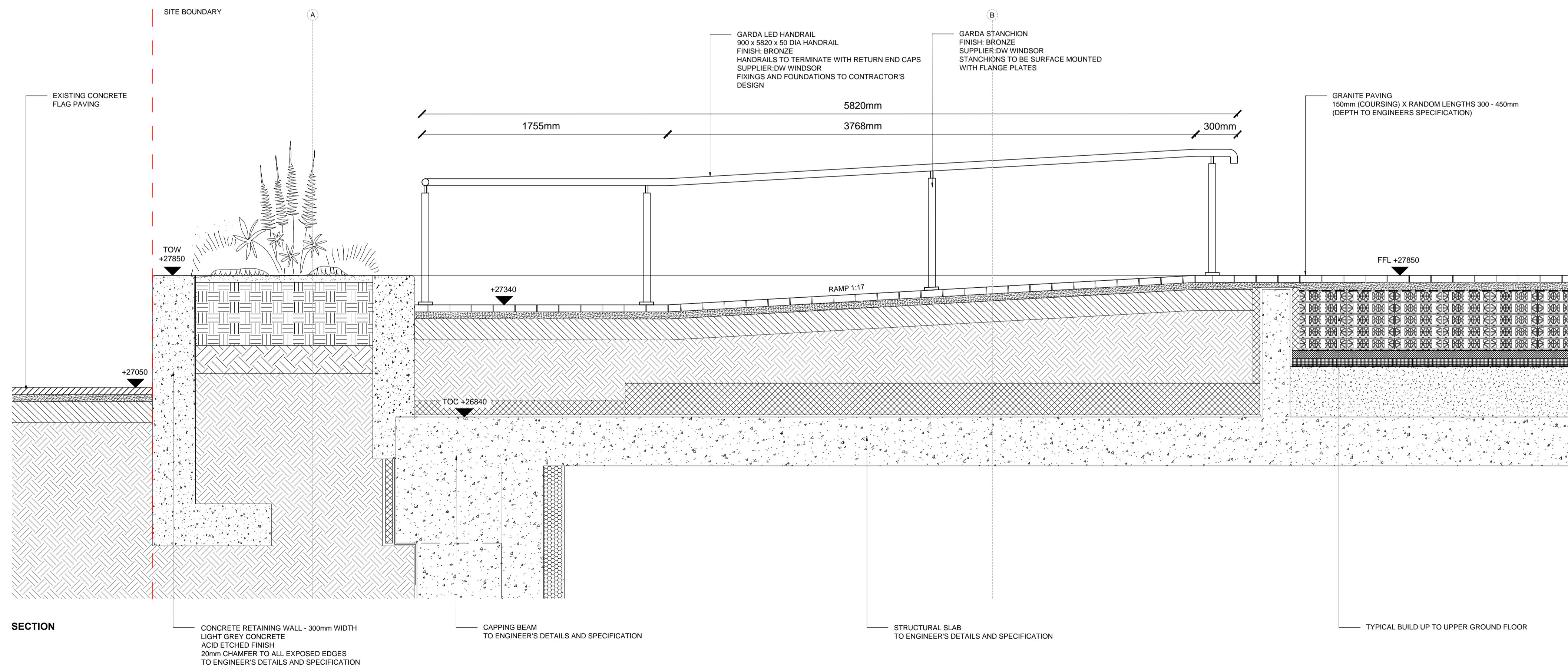
DWG. NO 5657_331

No dimensions are to be scaled from this drawing. All dimensions are to be checked on site. Area measurements for indicative purposes only.
© LDA Design Consulting LLP. Quality Assured to BS EN ISO 9001:2000
Sources: Ordnance Survey





D57 HANDRAIL TO CAMLEY STREET ENTRANCE No.2
SCALE 1 : 20



D58 HANDRAIL TO CAMLEY STREET ENTRANCE No.3
SCALE 1 : 20

LEGEND

- This drawing is to be read in conjunction with all other drawings and specifications.
- Do not scale off this drawing. Written dimensions to be taken only.
- Any discrepancies found between this drawing and other drawings and specifications in the construction documents must be referred to the Landscape Architect prior to work commencing.
- This drawing must not be copied in whole or in part without written consent of LDA design.
- These drawings are for finishes only. All foundation, fixing, paving depths and drainage details to be provided by others.
- All dimensions in mm unless otherwise stated.
- Where dimension sizes of units are given they state length x width x depth.

NOTES:

REFER TO GENERAL ARRANGEMENT LAYOUT AND REFERENCE PLANS DWG 5657_100-104

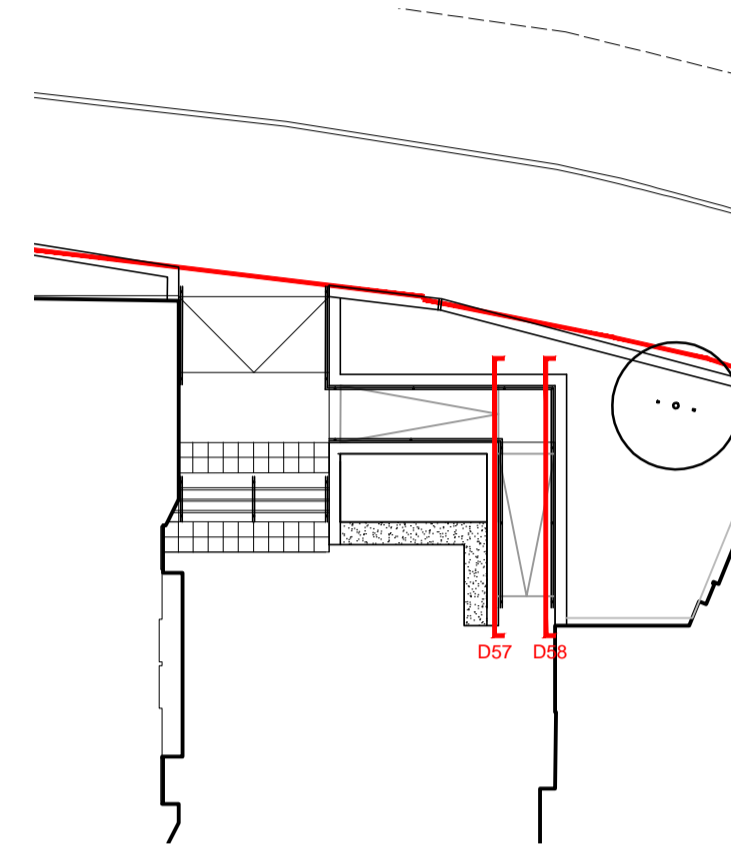
REFER TO HARDWORKS LAYOUT AND REFERENCE PLANS DWG 5657_200

REFER TO FURNITURE LAYOUT AND REFERENCE PLANS DWG 5657_400

REFER TO SOFTWARES LAYOUT AND REFERENCE PLANS DWG 5657_500

TO BE READ IN CONJUNCTION WITH LANDSCAPE ARCHITECT'S EXTERNAL WORKS SPECIFICATION.

TO BE READ IN CONJUNCTION WITH ARCHITECT'S GA DRAWINGS 0010 SERIES



READ THIS FIRST

Note for Contractors
This drawing should be considered along with the risk information contained in the CDM Pre Construction Information. This information will include details of the SIGNIFICANT risks which LDA Design has identified which may arise from constructing their designs shown on this drawing. A Competent Contractor should be aware of the typical risks associated with doing this work.

Note for Workers
DO NOT START YOUR WORK unless you know the Risks and Controls relating to the work on this drawing (including SAFE SEQUENCES OF WORK and EQUIPMENT).

Do not issue copies of parts of this drawing without the above Note for Workers (unless you are sure that the Workers can undertake the work safely).

REV.	DESCRIPTION	DATE
B	Construction issue	AW 21/01/19
A	Granite step modules added	AW 11/09/17

LDA DESIGN

PROJECT TITLE
101 Camley Street

DRAWING TITLE
Stage 5: Construction
Handrails
Sheet 03

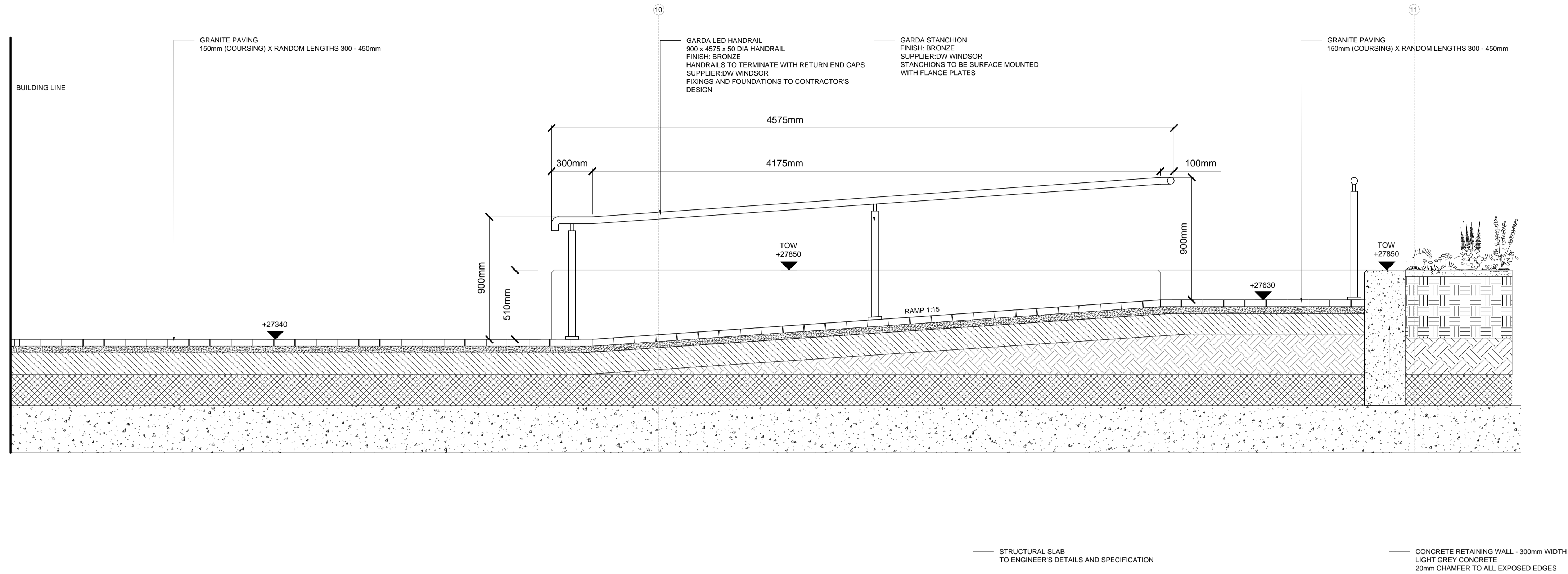
ISSUED BY: Exeter T: 01392 260430
DATE: Jan 2019 DRAWN: AW
SCALE: A1 1:20 CHECKED: RAs
STATUS: Construction APPROVED: RAs

DWG. NO 5657_332

No dimensions are to be scaled from this drawing. All dimensions are to be checked on site. Area measurements for indicative purposes only.

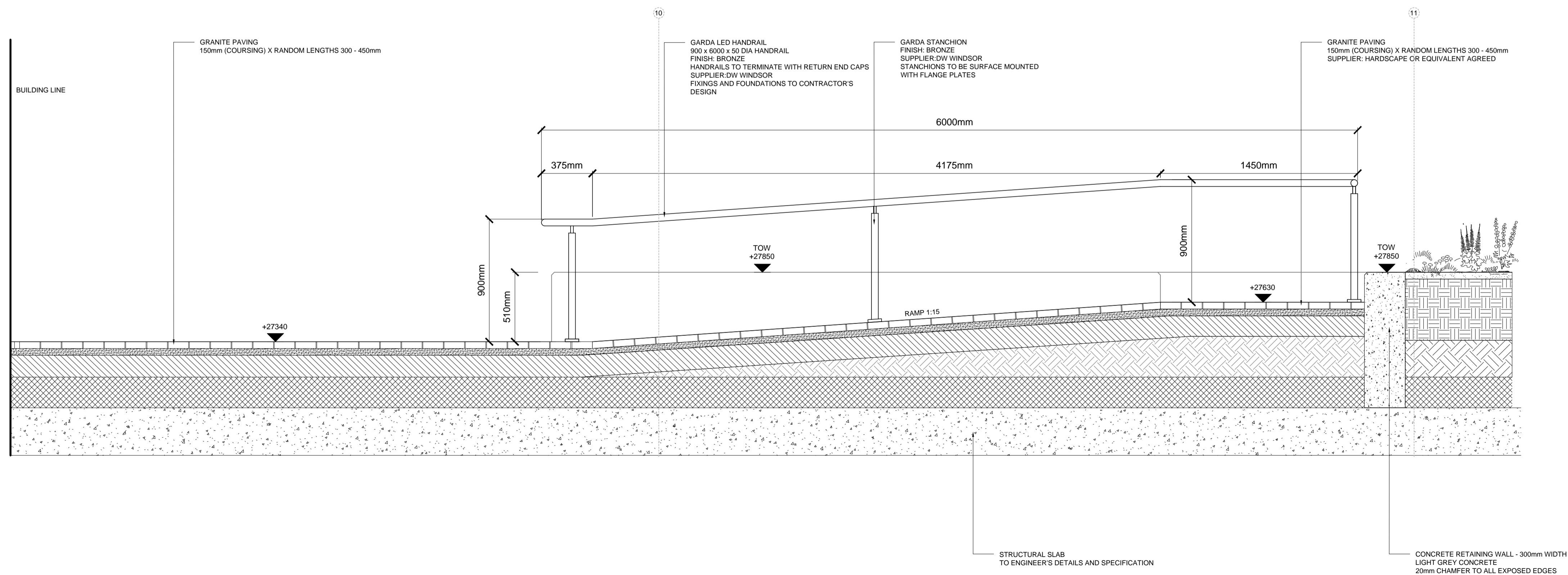
© LDA Design Consulting LLP. Quality Assured to BS EN ISO 9001: 2000
Sources: Ordnance Survey





SECTION

D59
5657_333
HANDRAIL TO CAMLEY STREET ENTRANCE No.4
SCALE 1 : 20



SECTION

D60
5657_333
HANDRAIL TO CAMLEY STREET ENTRANCE No.5
SCALE 1 : 20

LEGEND

1. This drawing is to be read in conjunction with all other drawings and specifications.
2. Do not scale off this drawing. Written dimensions to be taken only.
3. Any discrepancies found between this drawing and other drawings and specifications in the construction documents must be referred to the Landscape Architect prior to work commencing.
4. This drawing must not be copied in whole or in part without written consent of LDA design.
5. These drawings are for finishes only. All foundation, fixing, paving depths and drainage details to be provided by others.
6. All dimensions in mm unless otherwise stated.
7. Where dimension sizes of units are given they state length x width x depth.

NOTES:

REFER TO GENERAL ARRANGEMENT LAYOUT AND REFERENCE PLANS DWG 5657_100-104

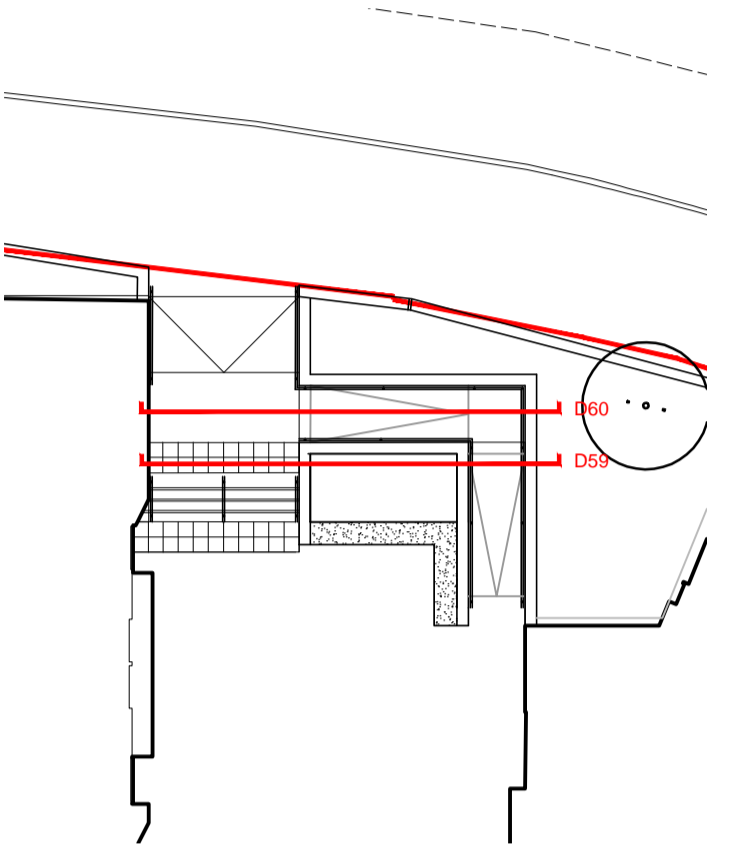
REFER TO HARDWORKS LAYOUT AND REFERENCE PLANS DWG 5657_200

REFER TO FURNITURE LAYOUT AND REFERENCE PLANS DWG 5657_300

REFER TO SOFTWARES LAYOUT AND REFERENCE PLANS DWG 5657_400

TO BE READ IN CONJUNCTION WITH LANDSCAPE ARCHITECT'S EXTERNAL WORKS SPECIFICATION.

TO BE READ IN CONJUNCTION WITH ARCHITECT'S GA DRAWINGS 0010 SERIES



READ THIS FIRST

- Note for Contractors**
This drawing should be considered along with the risk information contained in the CDM Pre Construction Information. This information will include details of the SIGNIFICANT risks which LDA Design has identified which may arise from constructing their designs shown on this drawing. A Competent Contractor should be aware of the typical risks associated with doing this work.
- Note for Workers**
DO NOT START YOUR WORK unless you know the Risks and Controls relating to the work on this drawing (including SAFE SEQUENCES OF WORK and EQUIPMENT).
- Do not issue copies of parts of this drawing without the above Note for Workers (unless you are sure that the Workers can undertake the work safely).

REV.	DESCRIPTION	APP. DATE
C	Construction issue	AW 21/01/19
B	Updated to latest GA	AW 10/10/17
A	Granite step modules added	AW 11/09/17

LDA DESIGN

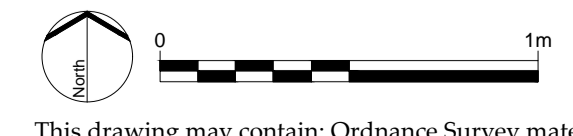
PROJECT TITLE
101 Camley Street

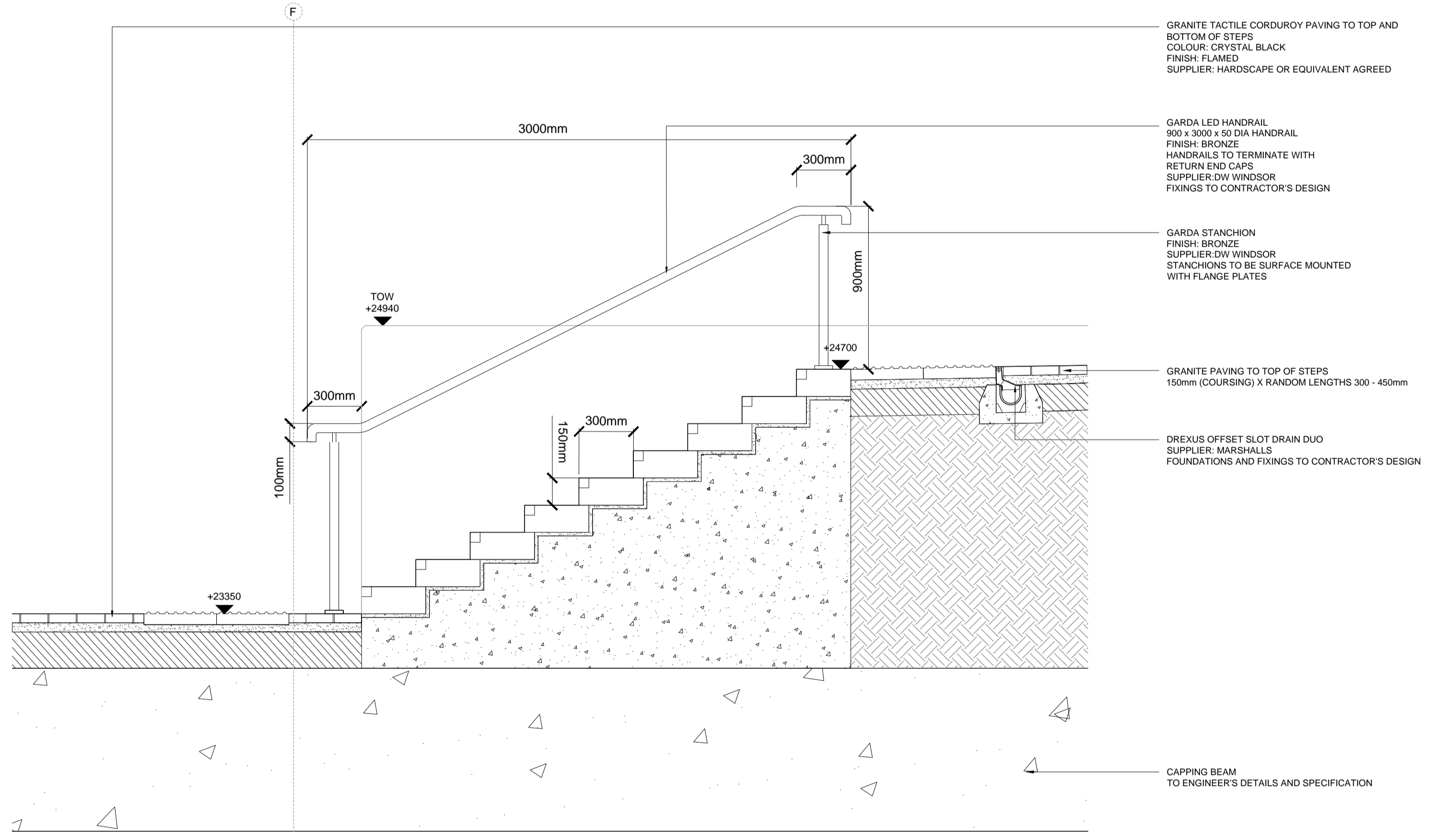
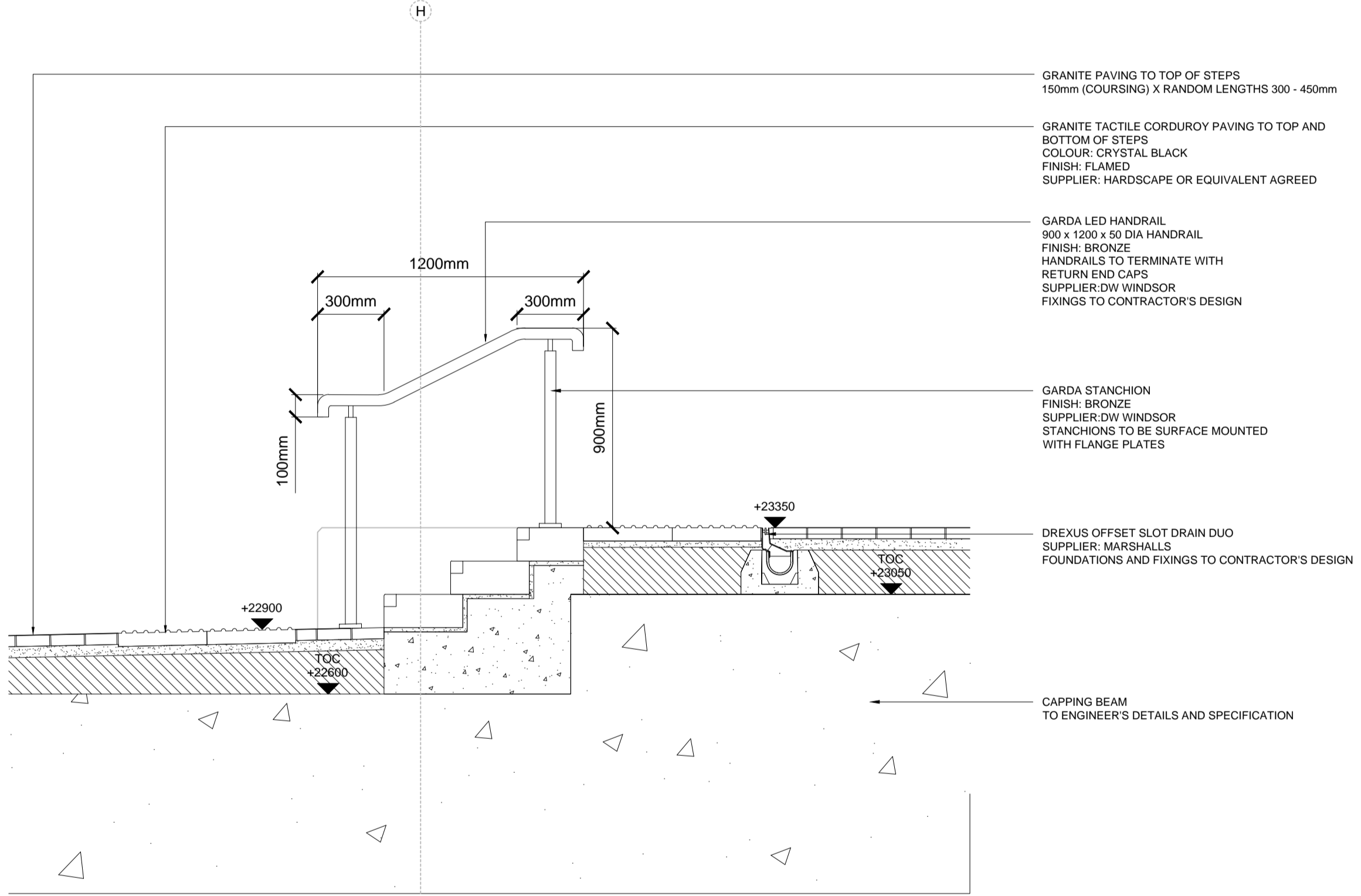
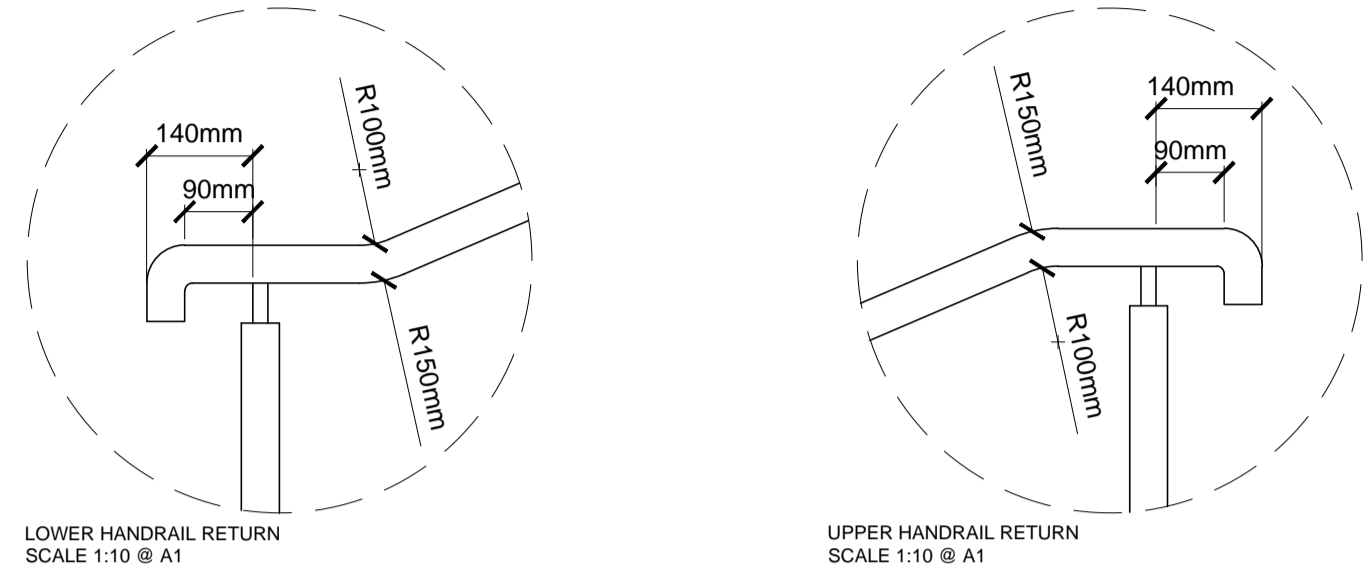
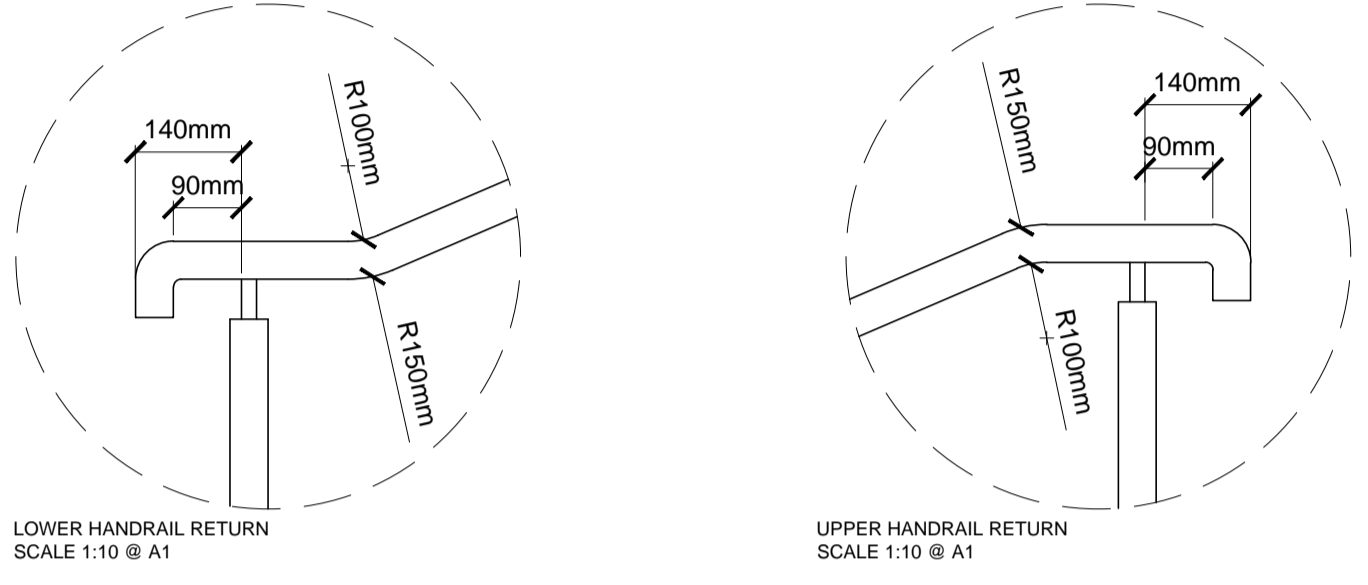
DRAWING TITLE
Stage 5: Construction Handrails Sheet 04

ISSUED BY: Exeter T: 01392 260430
DATE: Jan 2019 DRAWN: AW
SCALE: 1:20 CHECKED: RAs
STATUS: Construction APPROVED: RAs

DWG. NO 5657_333

No dimensions are to be scaled from this drawing. All dimensions are to be checked on site. Area measurements for indicative purposes only.
© LDA Design Consulting LLP. Quality Assured to BS EN ISO 9001 : 2000
Sources: Ordnance Survey





LEGEND

- This drawing is to be read in conjunction with all other drawings and specifications.
- Do not scale off this drawing. Written dimensions to be taken only.
- Any discrepancies found between this drawing and other drawings and specifications in the construction documents must be referred to the Landscape Architect prior to work commencing.
- This drawing must not be copied in whole or in part without written consent of LDA design.
- These drawings are for finishes only. All foundation, fixing, paving depths and drainage details to be provided by others.
- All dimensions in mm unless otherwise stated.
- Where dimension sizes of units are given they state length x width x depth.

NOTES:

REFER TO GENERAL ARRANGEMENT LAYOUT AND REFERENCE PLANS DWG 5657_100-104

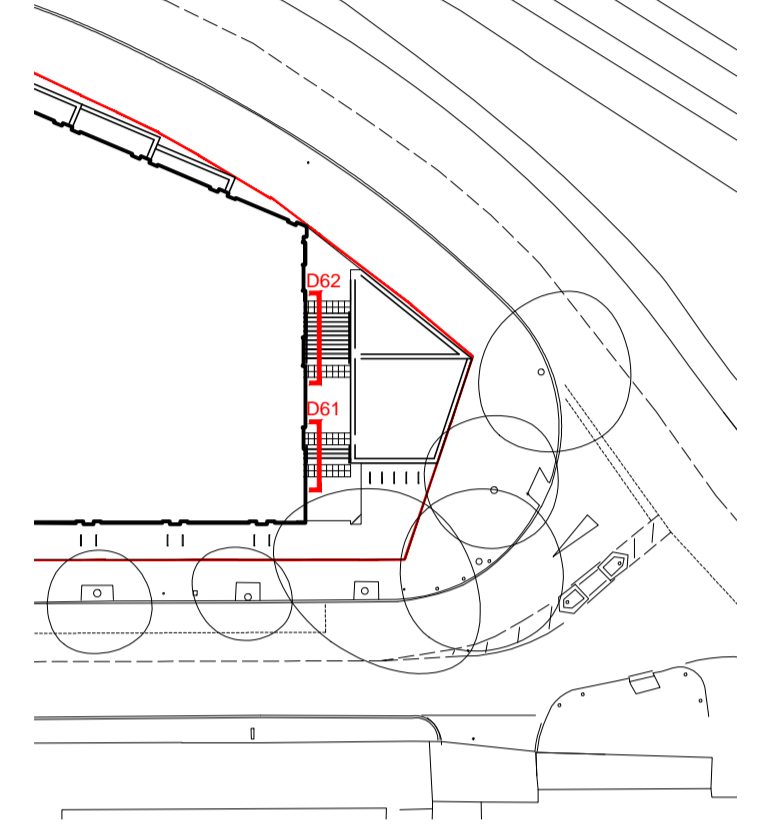
REFER TO HARDWORKS LAYOUT AND REFERENCE PLANS DWG 5657_200

REFER TO FURNITURE LAYOUT AND REFERENCE PLANS DWG 5657_300

REFER TO SOFTWARES LAYOUT AND REFERENCE PLANS DWG 5657_400

TO BE READ IN CONJUNCTION WITH LANDSCAPE ARCHITECT'S EXTERNAL WORKS SPECIFICATION.

TO BE READ IN CONJUNCTION WITH ARCHITECT'S GA DRAWINGS 0010 SERIES



SECTION

D61 HANDRAIL TO STEPS NO.3

SCALE 1 : 20

SECTION

D62 HANDRAIL TO STEPS NO.4

SCALE 1 : 20

READ THIS FIRST

Note for Contractors
This drawing should be considered along with the risk information contained in the CDM Pre Construction Information. This information will include details of the SIGNIFICANT risks which LDA Design has identified which may arise from constructing their designs shown on this drawing. A Competent Contractor should be aware of the typical risks associated with doing this work.

Note for Workers
DO NOT START YOUR WORK unless you know the Risks and Controls relating to the work on this drawing (including SAFE SEQUENCES OF WORK and EQUIPMENT).

Do not issue copies of parts of this drawing without the above Note for Workers (unless you are sure that the Workers can undertake the work safely).

REV.	DESCRIPTION	APP.	DATE
C	Construction issue	AW	21/01/19
B	Update to latest step layout	AW	11/10/17
A	Granite step modules added	AW	11/09/17

LDADDESIGN

PROJECT TITLE
101 Camley Street

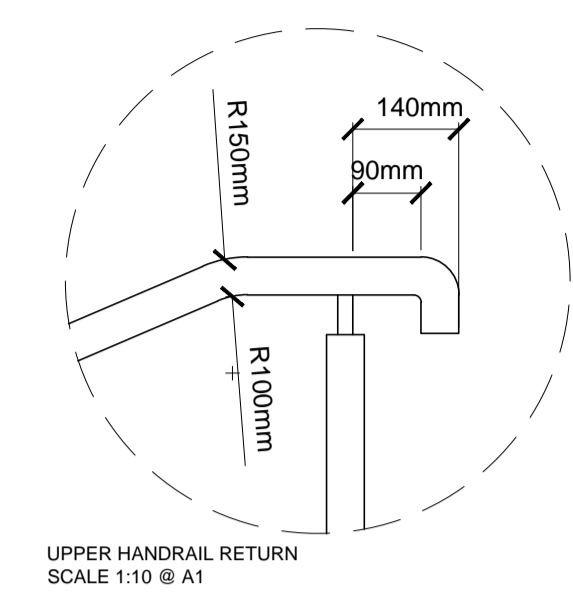
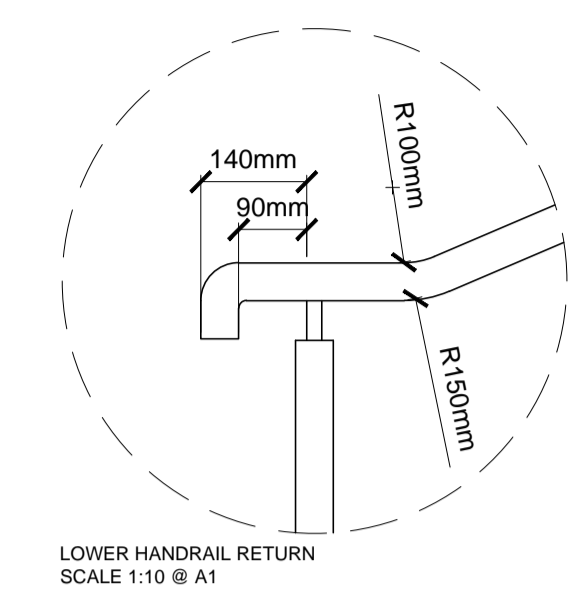
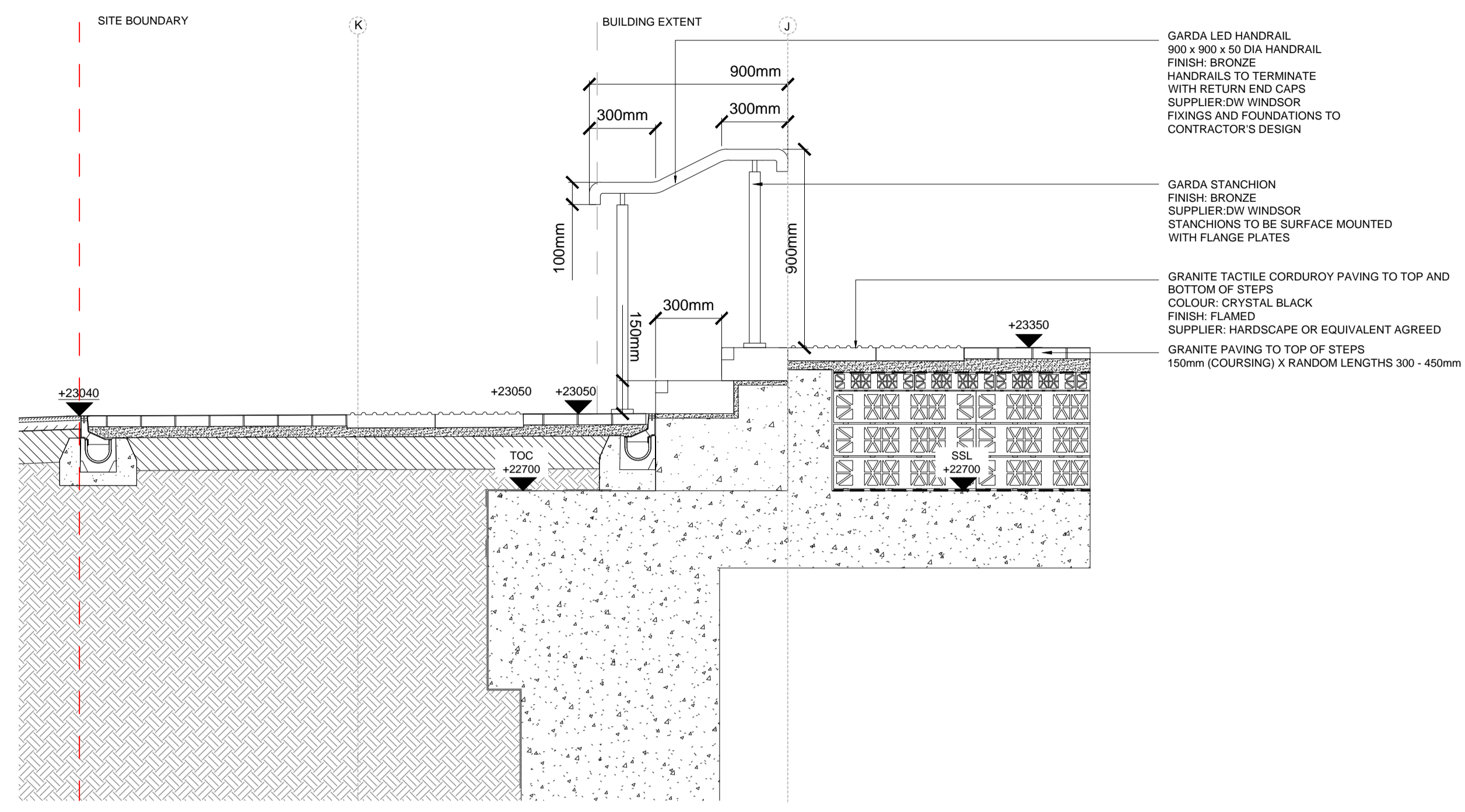
DRAWING TITLE
Stage 5: Construction
Handrails
Sheet 05

ISSUED BY: Exeter T: 01392 260430
DATE: Jan 2019 DRAWN: AW
SCALE: 1:50 CHECKED: RAs
STATUS: Construction APPROVED: RAs

DWG. NO 5657_334

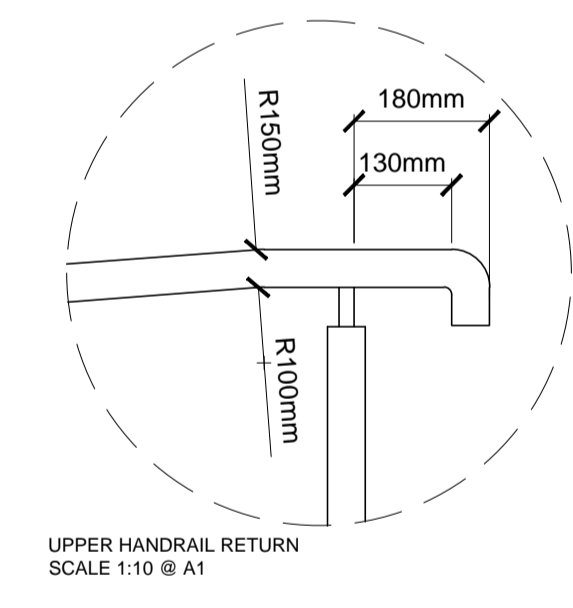
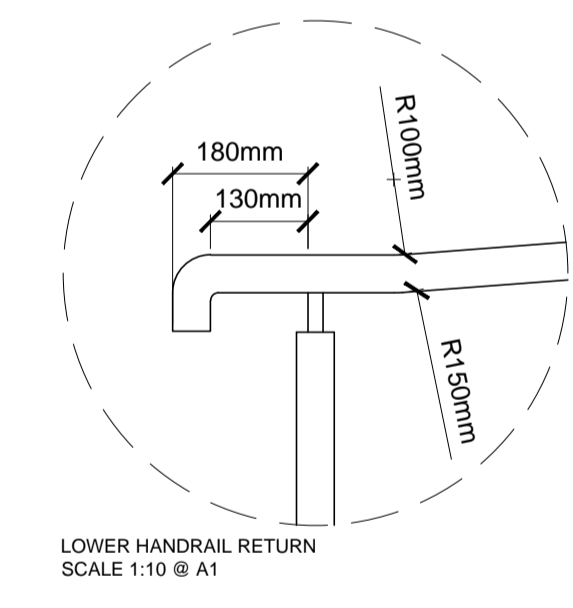
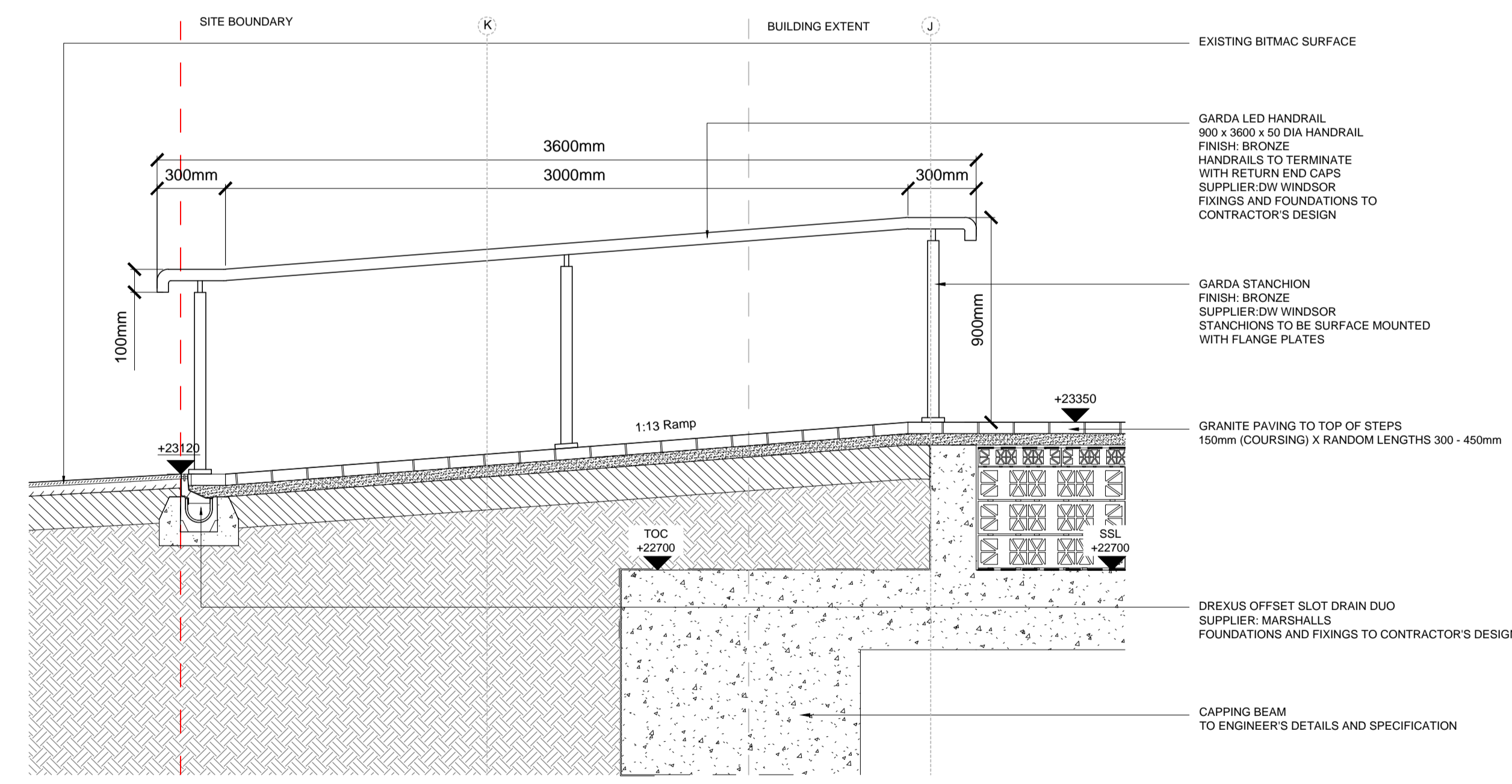
No dimensions are to be scaled from this drawing. All dimensions are to be checked on site. Area measurements for indicative purposes only.

© LDA Design Consulting LLP. Quality Assured to BS EN ISO 9001 : 2000
Sources: Ordnance Survey



SECTION

D63 HANDRAIL TO STEPS NO.5
SCALE 1 : 20



SECTION

D64 HANDRAIL TO RAMP NO. 2
SCALE 1 : 20

LEGEND

- This drawing is to be read in conjunction with all other drawings and specifications.
- Do not scale off this drawing. Written dimensions to be taken only.
- Any discrepancies found between this drawing and other drawings and specifications in the construction documents must be referred to the Landscape Architect prior to work commencing.
- This drawing must not be copied in whole or in part without written consent of LDA design.
- These drawings are for finishes only. All foundation, fixing, paving depths and drainage details to be provided by others.
- All dimensions in mm unless otherwise stated.
- Where dimension sizes of units are given they state length x width x depth.

NOTES:

REFER TO GENERAL ARRANGEMENT LAYOUT AND REFERENCE PLANS DWG 5657_100-104

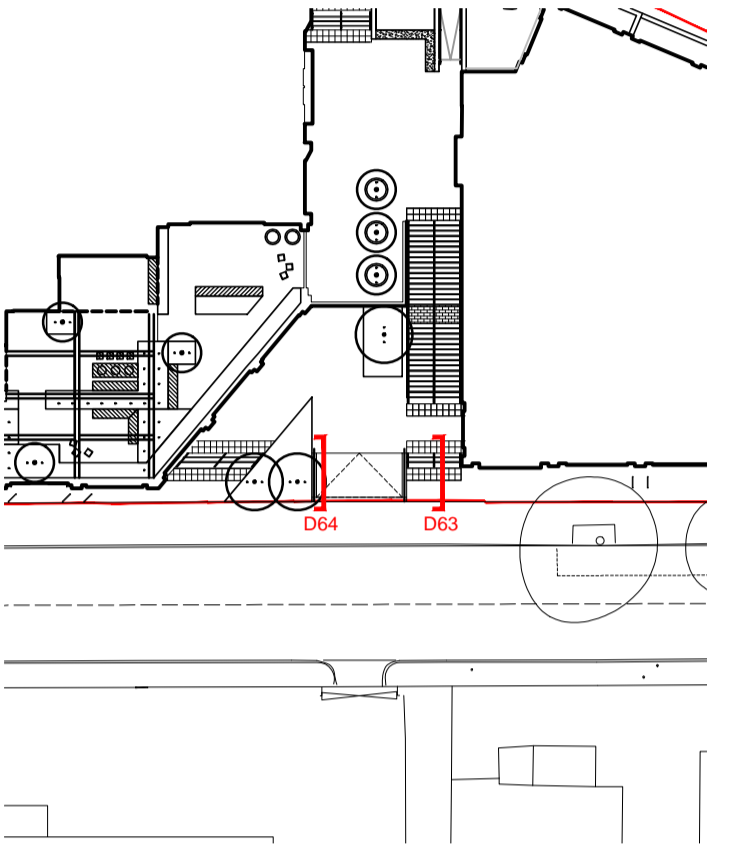
REFER TO HARDWORKS LAYOUT AND REFERENCE PLANS DWG 5657_200

REFER TO FURNITURE LAYOUT AND REFERENCE PLANS DWG 5657_300

REFER TO SOFTWARES LAYOUT AND REFERENCE PLANS DWG 5657_400

TO BE READ IN CONJUNCTION WITH LANDSCAPE ARCHITECT'S EXTERNAL WORKS SPECIFICATION

TO BE READ IN CONJUNCTION WITH ARCHITECT'S GA DRAWINGS 0010 SERIES



READ THIS FIRST

Note for Contractors
This drawing should be considered along with the risk information contained in the CDM Pre Construction Information. This information will include details of the SIGNIFICANT risks which LDA Design has identified which may arise from constructing their designs shown on this drawing. A Competent Contractor should be aware of the typical risks associated with doing this work.

Note for Workers
DO NOT START YOUR WORK unless you know the Risks and Controls relating to the work on this drawing (including SAFE SEQUENCES OF WORK and EQUIPMENT).

Do not issue copies of parts of this drawing without the above Note for Workers (unless you are sure that the Workers can undertake the work safely).

REV.	DESCRIPTION	DATE
B	Construction issue	AW 21/01/19
A	Granite step modules added	AW 11/09/17

LDA DESIGN

PROJECT TITLE
101 Camley Street

DRAWING TITLE
Stage 5: Construction
Handrails
Sheet 06

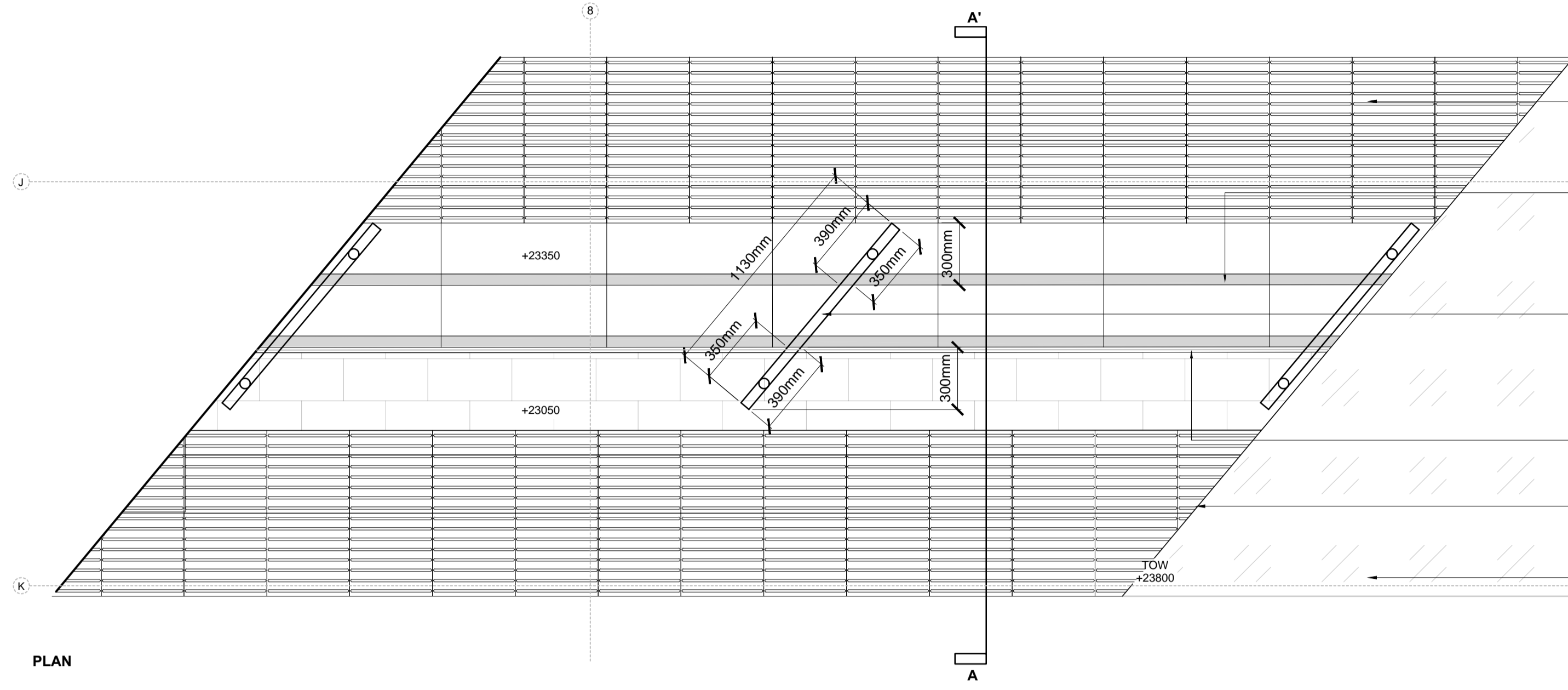
ISSUED BY: Exeter T: 01392 260430
DATE: Jan 2019 DRAWN: AW
SCALE: A1 1:20 CHECKED: RAs
STATUS: Construction APPROVED: RAs

DWG. NO 5657_335

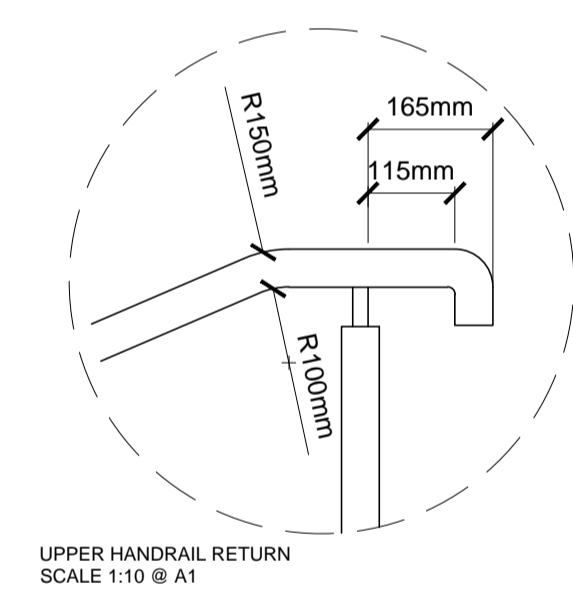
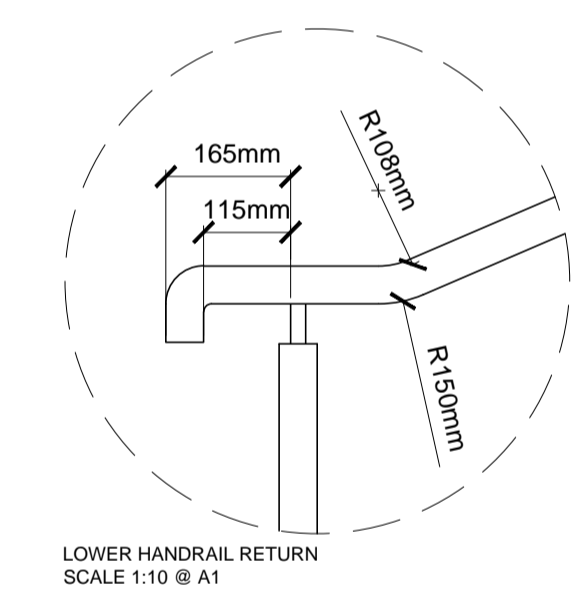
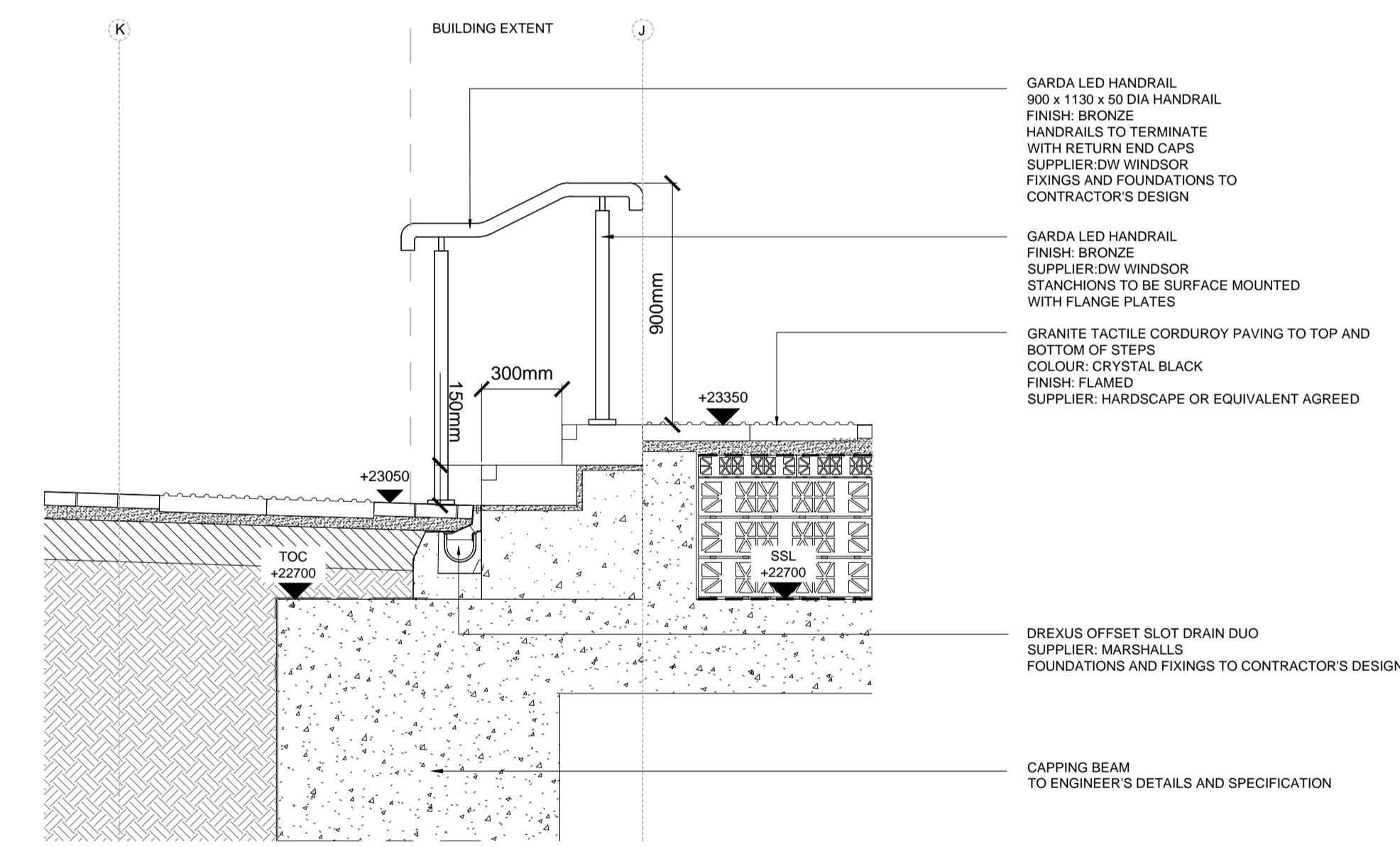
No dimensions are to be scaled from this drawing. All dimensions are to be checked on site. Area measurements for indicative purposes only.

© LDA Design Consulting LLP. Quality Assured to BS EN ISO 9001 : 2000
Sources: Ordnance Survey





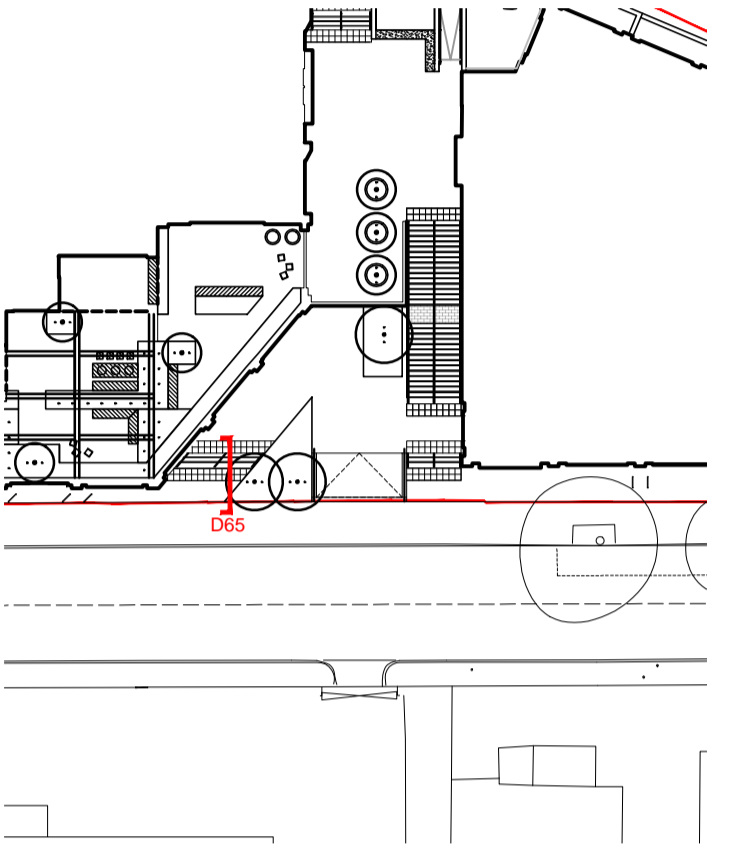
- GRANITE TACTILE CORDUROY PAVING TO TOP AND BOTTOM OF STEPS
COLOUR: CRYSTAL BLACK
FINISH: FLAMED
SUPPLIER: HARDSCAPE OR EQUIVALENT AGREED
- GRANITE STEP MODULE WITH INTEGRATED GRANITE WARNING STRIP
GRANITE STEPS: ROYAL WHITE, FLAMED FINISH
800MM X 350MM X 150MM
GRANITE WARNING STRIP: CRYSTAL BLACK, FLAMED FINISH
SUPPLIER: HARDSCAPE OR EQUIVALENT AGREED
- GARDA LED HANDRAIL
900 x 1130 x 50 DIA HANDRAIL
FINISH: BRONZE
HANDRAILS TO TERMINATE WITH RETURN END CAPS
SUPPLIER: DW WINDSOR
FIXINGS AND FOUNDATIONS TO CONTRACTOR'S DESIGN
- DREXUS OFFSET SLOT DRAIN DUO
SUPPLIER: MARSHALLS
FOUNDATIONS AND FIXINGS TO CONTRACTOR'S DESIGN
- PLANTER WALL
STEEL FRAME POWDERCOATED TO RAL 7045
SUPPLIER: KINLEY PERIMETA PLANTERLINE
FOUNDATIONS AND FIXINGS TO ENGINEER'S DETAILS AND SPECIFICATION
- HERBACEOUS PLANTING



SECTION A - A'

D65 HANDRAIL TO STEPS NO.5
SCALE 1 : 20

- LEGEND**
- This drawing is to be read in conjunction with all other drawings and specifications.
 - Do not scale off this drawing. Written dimensions to be taken only.
 - Any discrepancies found between this drawing and other drawings and specifications in the construction documents must be referred to the Landscape Architect prior to work commencing.
 - This drawing must not be copied in whole or in part without written consent of LDA design.
 - These drawings are for finishes only. All foundation, fixing, paving depths and drainage details to be provided by others.
 - All dimensions in mm unless otherwise stated.
 - Where dimension sizes of units are given they state length x width x depth.
- NOTES:**
- REFER TO GENERAL ARRANGEMENT LAYOUT AND REFERENCE PLANS DWG 5657_100-104
 - REFER TO HARDWORKS LAYOUT AND REFERENCE PLANS DWG 5657_200
 - REFER TO FURNITURE LAYOUT AND REFERENCE PLANS DWG 5657_400
 - REFER TO SOFTWARES LAYOUT AND REFERENCE PLANS DWG 5657_300
- TO BE READ IN CONJUNCTION WITH LANDSCAPE ARCHITECT'S EXTERNAL WORKS SPECIFICATION
- TO BE READ IN CONJUNCTION WITH ARCHITECT'S GA DRAWINGS 0010 SERIES



READ THIS FIRST

- Note for Contractors**
This drawing should be considered along with the risk information contained in the CDM Pre Construction Information. This information will include details of the SIGNIFICANT risks which LDA Design has identified which may arise from constructing their designs shown on this drawing. A Competent Contractor should be aware of the typical risks associated with doing this work.
- Note for Workers**
DO NOT START YOUR WORK unless you know the Risks and Controls relating to the work on this drawing (including SAFE SEQUENCES OF WORK and EQUIPMENT).
- Do not issue copies of parts of this drawing without the above Note for Workers (unless you are sure that the Workers can undertake the work safely).

REV.	DESCRIPTION	DATE
B	Construction issue	AW 21/01/19
A	Granite step modules added	AW 11/09/17

LDA DESIGN

PROJECT TITLE
101 Camley Street

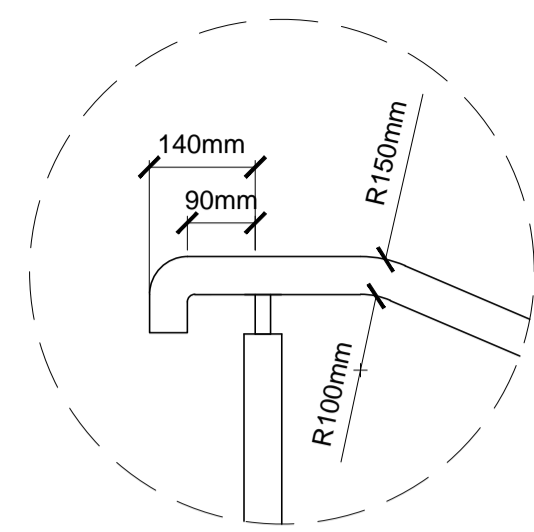
DRAWING TITLE
Stage 5: Construction
Handrails
Sheet 07

ISSUED BY	Exeter	T: 01392 260430
DATE	Jan 2019	DRAWN AW
SCALE: A1	1:20	CHECKED RAs
STATUS	Construction	APPROVED RAs

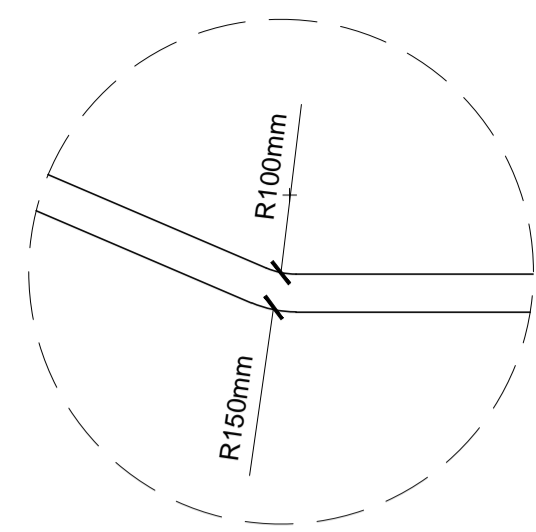
DWG. NO 5657_336

No dimensions are to be scaled from this drawing. All dimensions are to be checked on site. Area measurements for indicative purposes only.
© LDA Design Consulting LLP. Quality Assured to BS EN ISO 9001 : 2000
Sources: Ordnance Survey

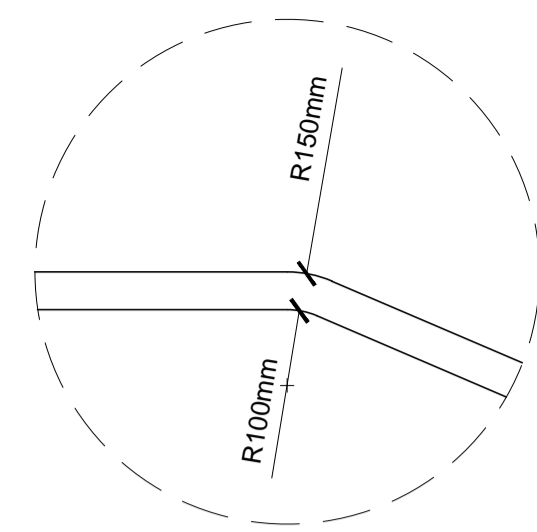




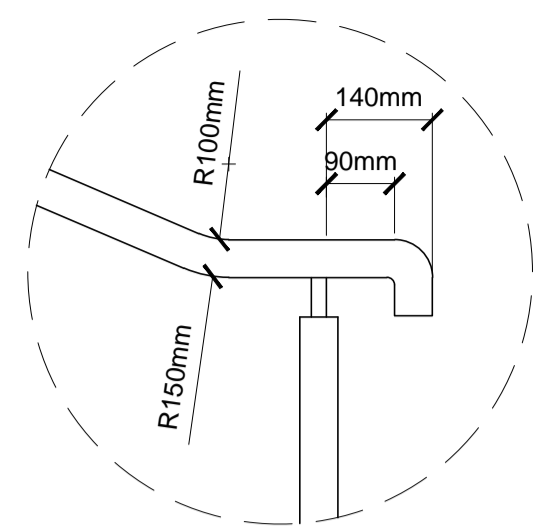
UPPER HANDRAIL RETURN
SCALE 1:10 @ A1



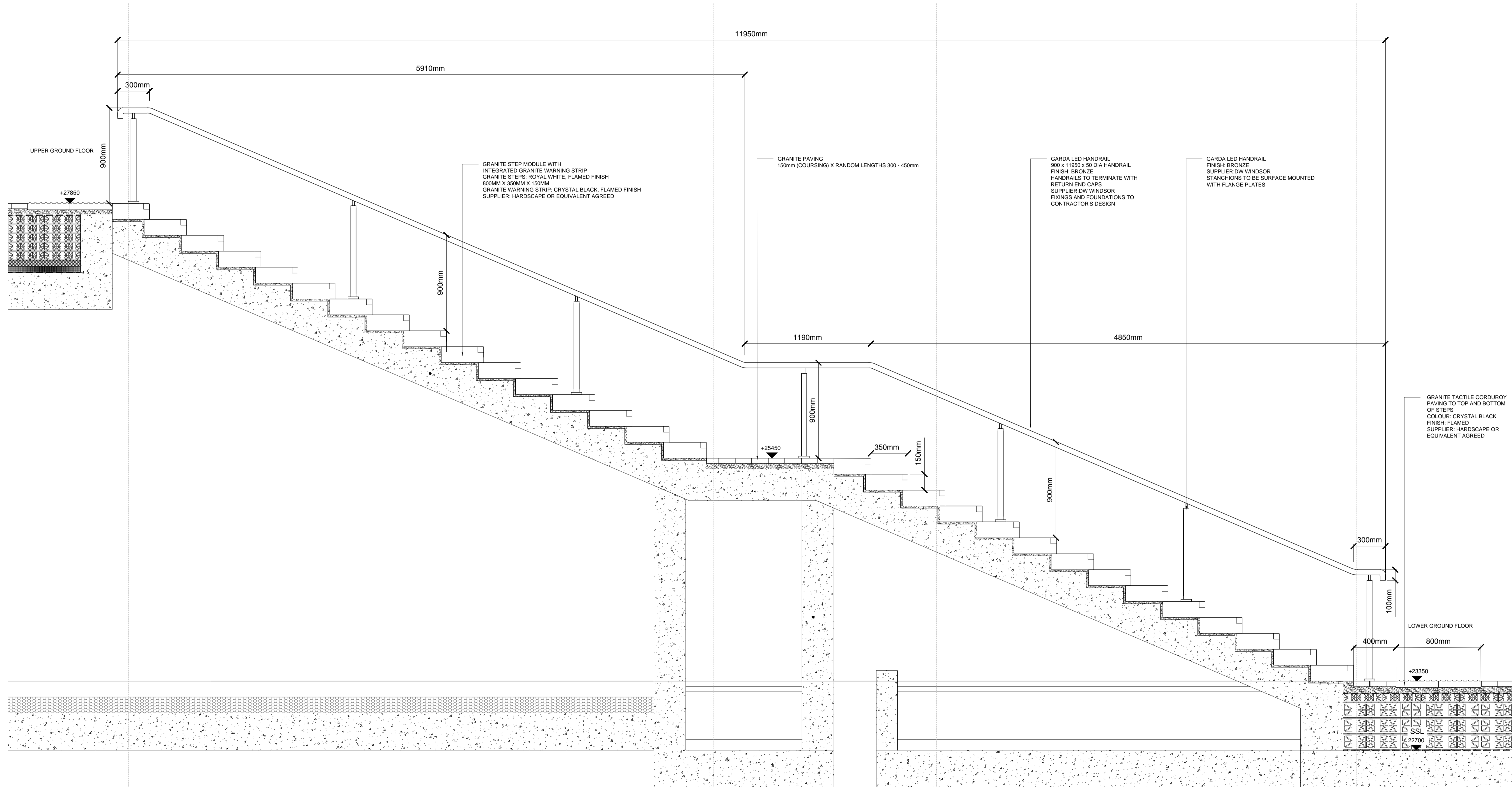
HANDRAIL BEND
SCALE 1:10 @ A1



HANDRAIL BEND
SCALE 1:10 @ A1



LOWER HANDRAIL RETURN
SCALE 1:10 @ A1



SECTION

D66 HANDRAIL TO STEPS NO.6
SCALE 1 : 20

LEGEND

1. This drawing is to be read in conjunction with all other drawings and specifications.
2. Do not scale off this drawing. Written dimensions to be taken only.
3. Any discrepancies found between this drawing and other drawings and specifications in the construction documents must be referred to the Landscape Architect prior to work commencing.
4. This drawing must not be copied in whole or in part without written consent of LDA design.
5. These drawings are for finishes only. All foundation, fixing, paving depths and drainage details to be provided by others.
6. All dimensions in mm unless otherwise stated.
7. Where dimension sizes of units are given they state length x width x depth.

NOTES:

REFER TO GENERAL ARRANGEMENT LAYOUT AND REFERENCE PLANS DWG 5657_100-104

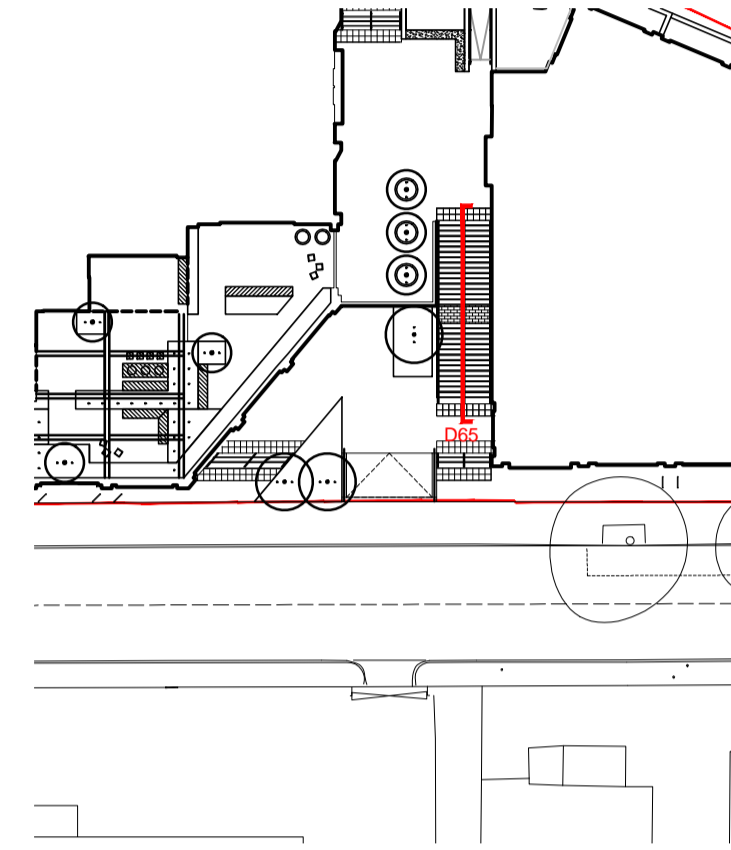
REFER TO HARDWORKS LAYOUT AND REFERENCE PLANS DWG 5657_200

REFER TO FURNITURE LAYOUT AND REFERENCE PLANS DWG 5657_400

REFER TO SOFTWARES LAYOUT AND REFERENCE PLANS DWG 5657_500

TO BE READ IN CONJUNCTION WITH LANDSCAPE ARCHITECT'S EXTERNAL WORKS SPECIFICATION

TO BE READ IN CONJUNCTION WITH ARCHITECT'S GA DRAWINGS 0010 SERIES



READ THIS FIRST

- Note for Contractors**
This drawing should be considered along with the risk information contained in the CDM Pre Construction Information. This information will include details of the SIGNIFICANT risks which LDA Design has identified which may arise from constructing their designs shown on this drawing. A Competent Contractor should be aware of the typical risks associated with doing this work.
- Note for Workers**
DO NOT START YOUR WORK unless you know the Risks and Controls relating to the work on this drawing (including SAFE SEQUENCES OF WORK and EQUIPMENT).
- Do not issue copies of parts of this drawing without the above Note for Workers (unless you are sure that the Workers can undertake the work safely).

REV.	DESCRIPTION	DATE
B	Construction issue	AW 21/01/19
A	Granite step modules added	AW 11/09/17

LD A DESIGN

PROJECT TITLE
101 Camley Street

DRAWING TITLE
Stage 5: Construction
Handrails
Sheet 08

ISSUED BY	Exeter	T: 01392 260430
DATE	Jan 2019	DRAWN AW
SCALE	1:20	CHECKED RAs
STATUS	Construction	APPROVED RAs

DWG. NO 5657_337

No dimensions are to be scaled from this drawing. All dimensions are to be checked on site. Area measurements for indicative purposes only.

© LDA Design Consulting LLP. Quality Assured to BS EN ISO 9001 : 2000
Sources: Ordnance Survey

