

READ THIS FIRST

- Note for Contractors**
This drawing should be considered along with the risk information contained in the CDM Pre Construction Information. This information will include details of the SIGNIFICANT risks which LDA Design has identified which may arise from constructing their designs shown on this drawing. A Competent Contractor should be aware of the typical risks associated with doing this work.
- Note for Workers**
DO NOT START YOUR WORK unless you know the Risks and Controls relating to the work on this drawing (including SAFE SEQUENCES OF WORK and EQUIPMENT).
- Do not issue copies of parts of this drawing without the above Note for Workers (unless you are sure that the Workers can undertake the work safely).

- LEGEND**
- This drawing is to be read in conjunction with all other drawings and specifications.
 - Do not scale off this drawing. Written dimensions to be taken only.
 - Any discrepancies found between this drawing and other drawings and specifications in the construction documents must be referred to the Landscape Architect prior to work commencing.
 - This drawing must not be copied in whole or in part without written consent of LDA Design.
 - These drawings are for finishes only. All foundation, fixing, paving depths and drainage details to be provided by others.
 - All dimensions in mm unless otherwise stated.
 - Where dimension sizes of units are given they state length x width x depth.

- NOTES:**
- REFER TO GENERAL ARRANGEMENT LAYOUT AND REFERENCE PLANS DWG 5657_100 - 104
 - REFER TO HARDWORKS LAYOUT AND REFERENCE PLAN DWG 5657_200
 - REFER TO FURNITURE LAYOUT AND REFERENCE PLAN DWG 5657_300
 - REFER TO SOFTWARES LAYOUT AND REFERENCE PLAN DWG 5657_400
 - REFER TO LIGHTING LAYOUT AND REFERENCE PLAN DWG 5657_500
 - TO BE READ IN CONJUNCTION WITH LANDSCAPE ARCHITECT'S EXTERNAL WORKS SPECIFICATION.
 - TO BE READ IN CONJUNCTION WITH ARCHITECT'S GA DRAWINGS 0010 SERIES

- SITE BOUNDARY
- GRANITE PAVING TO UPPER AND LOWER GROUND LEVELS
- CONCRETE EFFECT PORCELAIN TILES
- CONCRETE FLAG PAVING (TO MATCH EXISTING)
- SMOOTH ASPHALT SURFACING
- CORDUROY TACTILE PAVING TO TOP AND BOTTOM OF STEPS
- STEP UNITS
- CYCLE STAND
- GRANITE BENCH WITH RECESSED LIGHTING
- TIMBER BENCH WITH RECESSED LIGHTING
- GIANT FLOWERPOT PLANTER
- FLOWERPOT PLANTER
- PLANTING MIX - UPPER AND LOWER GROUND LEVELS
- PLANTING MIX - COMMUNAL GARDENS
- PLANTING MIX - WOODLAND BORDER
- CLIPPED HEDGE
- PROPOSED SPECIMEN TREE PLANTING
- EXISTING LEVELS
- PROPOSED LEVELS

I	Planter extended to bottom of steps	AW 22/02/19
H	Private terrace, external steps and planter wall layout coordinated with architecture	AW 21/01/19
G	Canal bridge removed	AW 17/01/19
F	Update to Camley St Entrance	AW 10/08/17
E	Update to southern raised planter layout	AW 03/08/17
D	Update Communal Gardens and Southern Steps	AW 27/07/17
C	Update Communal Gardens	AW 21/07/17
B	Update Communal Gardens	AW 27/06/17
A	Update to Marketing Suite	AW 16/05/17

REV. DESCRIPTION APP. DATE

LDA DESIGN

PROJECT TITLE
101 Camley Street

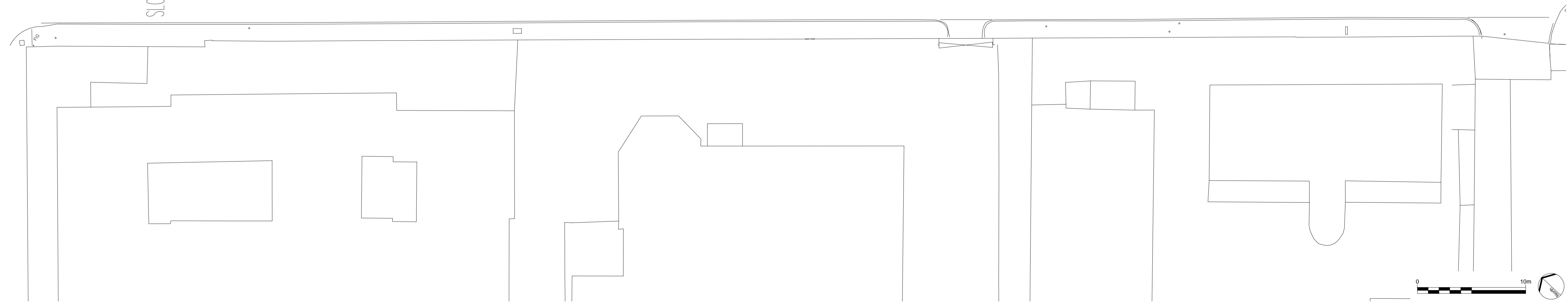
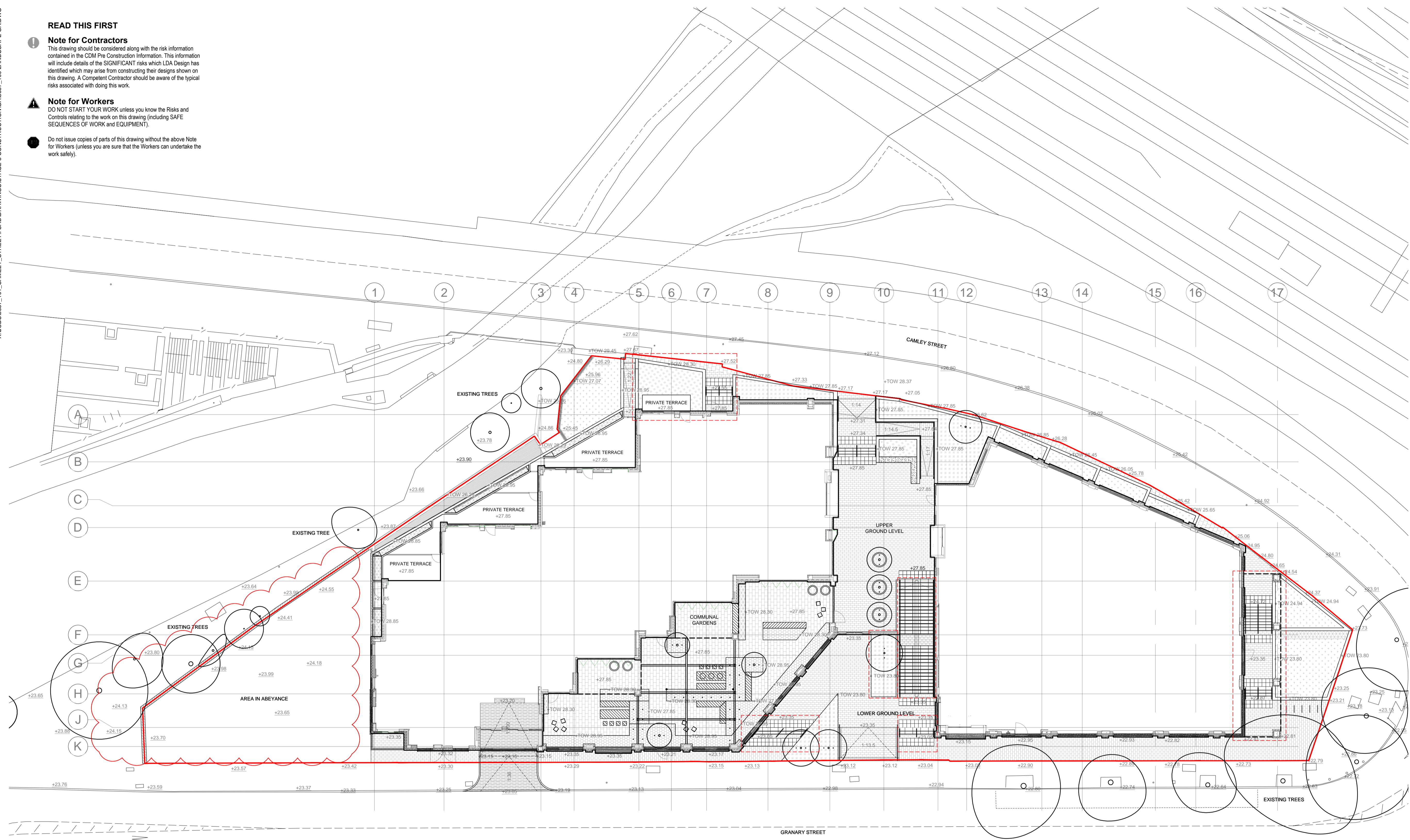
DRAWING TITLE
Stage 5: Construction
Landscape General Arrangement

ISSUED BY: Exeter T: 01392 260 430
DATE: Jan 2019 DRAWN: AW
SCALE: 1:200 CHECKED: RAs
STATUS: Construction APPROVED: RAs

DWG. NO 5657_100

No dimensions are to be scaled from this drawing. All dimensions are to be checked on site. Area measurements for indicative purposes only.

© LDA Design Consulting Ltd. Quality Assured to BS EN ISO 9001 : 2008
Sources: Ordnance Survey



X:\JOBS\6657_101_CAMLEY_STREET\CADDRAWINGS\STAGE 5 CONSTRUCTION\GA6657_101 LOWER GROUND FLOOR.DWG

READ THIS FIRST

Note for Contractors

This drawing should be considered along with the risk information contained in the CDM Pre Construction Information. This information will include details of the SIGNIFICANT risks which LDA Design has identified which may arise from constructing their designs shown on this drawing. A Competent Contractor should be aware of the typical risks associated with doing this work.

Note for Workers

DO NOT START YOUR WORK unless you know the Risks and Controls relating to the work on this drawing (including SAFE SEQUENCES OF WORK and EQUIPMENT).

Do not issue copies of parts of this drawing without the above Note for Workers (unless you are sure that the Workers can undertake the work safely).

LEGEND

1. This drawing is to be read in conjunction with all other drawings and specifications.
2. Do not scale off this drawing. Written dimensions to be taken only.
3. Any discrepancies found between this drawing and other drawings and specifications in the construction documents must be referred to the Landscape Architect prior to work commencing.
4. This drawing must not be copied in whole or in part without written consent of LDA design.
5. These drawings are for finishes only. All foundation, fixing, paving depths and drainage details to be provided by others.
6. All dimensions in mm unless otherwise stated.
7. Where dimension sizes of units are given they state length x width x depth.

NOTES

REFER TO GENERAL ARRANGEMENT LAYOUT AND REFERENCE PLANS DWG 5657_100 - 104

REFER TO HARDWORKS LAYOUT AND REFERENCE PLAN DWG 5657_200

REFER TO FURNITURE LAYOUT AND REFERENCE PLAN DWG 5657_400

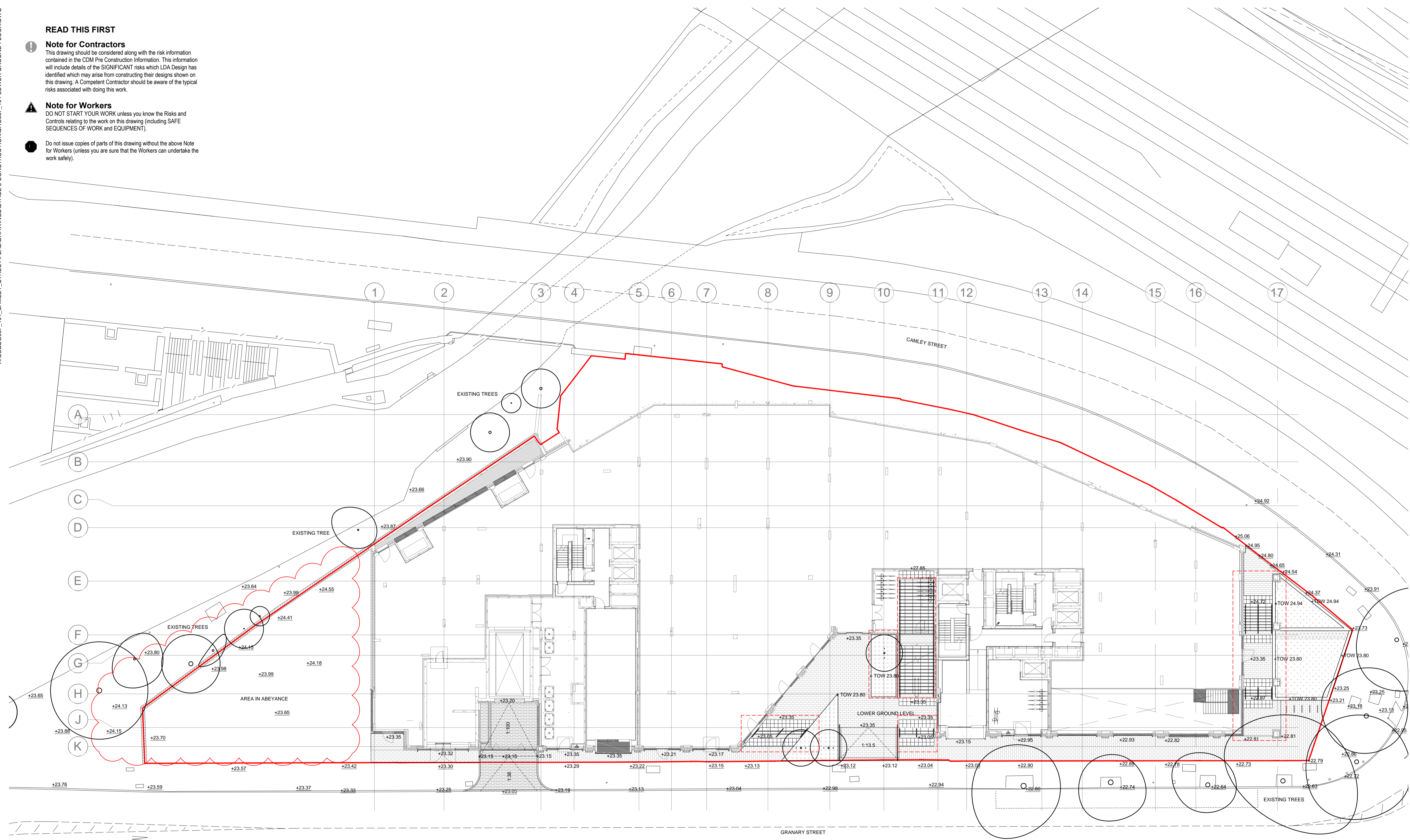
REFER TO SOFTWORKS LAYOUT AND REFERENCE PLAN DWG 5657_300

REFER TO LIGHTING LAYOUT AND REFERENCE PLAN DWG 5657_500

TO BE READ IN CONJUNCTION WITH LANDSCAPE ARCHITECT'S EXTERNAL WORKS SPECIFICATION.

TO BE READ IN CONJUNCTION WITH ARCHITECT'S GA DRAWINGS 0010 SERIES

- SITE BOUNDARY
- GRANITE PAVING TO UPPER AND LOWER GROUND LEVELS
- CONCRETE EFFECT PORCELAIN TILES
- CONCRETE FLAG PAVING (TO MATCH EXISTING)
- SMOOTH ASPHALT SURFACING
- CORDUROY TACTILE PAVING TO TOP AND BOTTOM OF STEPS
- STEP UNITS
- CYCLE STAND
- GRANITE BENCH WITH RECESSED LIGHTING
- TIMBER BENCH
- GIANT FLOWERPOT PLANTER
- FLOWERPOT PLANTER
- PLANTING MIX - UPPER AND LOWER GROUND LEVELS
- PLANTING MIX - COMMUNAL GARDENS
- PLANTING MIX - WOODLAND BORDER
- CLIPPED HEDGE
- PROPOSED SPECIMEN TREE PLANTING
- EXISTING LEVELS
- PROPOSED LEVELS



REV.	DESCRIPTION	APP. DATE
C	Planter extended to bottom of steps External steps and planter wall layout coordinated with architecture	AW 22/02/19
B	Construction Issue, coordination with architecture	AW 21/01/19
A	Canal bridge removed	AW 17/01/19

LDA DESIGN

PROJECT TITLE
101 Camley Street

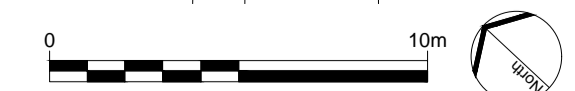
DRAWING TITLE
Stage 5: Construction
Landscape General Arrangement
Lower Ground Floor

ISSUED BY	Exeter	T: 01392 260 430	
DATE	Jan 2019	DRAWN	AW
SCALE	1:200	CHECKED	RAs
STATUS	Construction	APPROVED	RAs

DWG. NO 5657_101

No dimensions are to be scaled from this drawing. All dimensions are to be checked on site. Area measurements for indicative purposes only.

© LDA Design Consulting Ltd. Quality Assured to BS EN ISO 9001 : 2008
Sources: Ordnance Survey



X:\JOBS\5657_101_CAMLEY_STREET\CAD\DRAWINGS\STAGE 5 CONSTRUCTION\GA5657_102 UPPER GROUND FLOOR.DWG

READ THIS FIRST

Note for Contractors

This drawing should be considered along with the risk information contained in the CDM Pre Construction Information. This information will include details of the SIGNIFICANT risks which LDA Design has identified which may arise from constructing their designs shown on this drawing. A Competent Contractor should be aware of the typical risks associated with doing this work.

Note for Workers

DO NOT START YOUR WORK unless you know the Risks and Controls relating to the work on this drawing (including SAFE SEQUENCES OF WORK and EQUIPMENT).

Do not issue copies of parts of this drawing without the above Note for Workers (unless you are sure that the Workers can undertake the work safely).

LEGEND

1. This drawing is to be read in conjunction with all other drawings and specifications.
2. Do not scale off this drawing. Written dimensions to be taken only.
3. Any discrepancies found between this drawing and other drawings and specifications in the construction documents must be referred to the Landscape Architect prior to work commencing.
4. This drawing must not be copied in whole or in part without written consent of LDA Design.
5. These drawings are for finishes only. All foundation, fixing, paving depths and drainage details to be provided by others.
6. All dimensions in mm unless otherwise stated.
7. Where dimension sizes of units are given they state length x width x depth.

NOTES:

REFER TO GENERAL ARRANGEMENT LAYOUT AND REFERENCE PLANS DWG 5657_100 - 104

REFER TO HARDWORKS LAYOUT AND REFERENCE PLAN DWG 5657_200

REFER TO FURNITURE LAYOUT AND REFERENCE PLAN DWG 5657_300

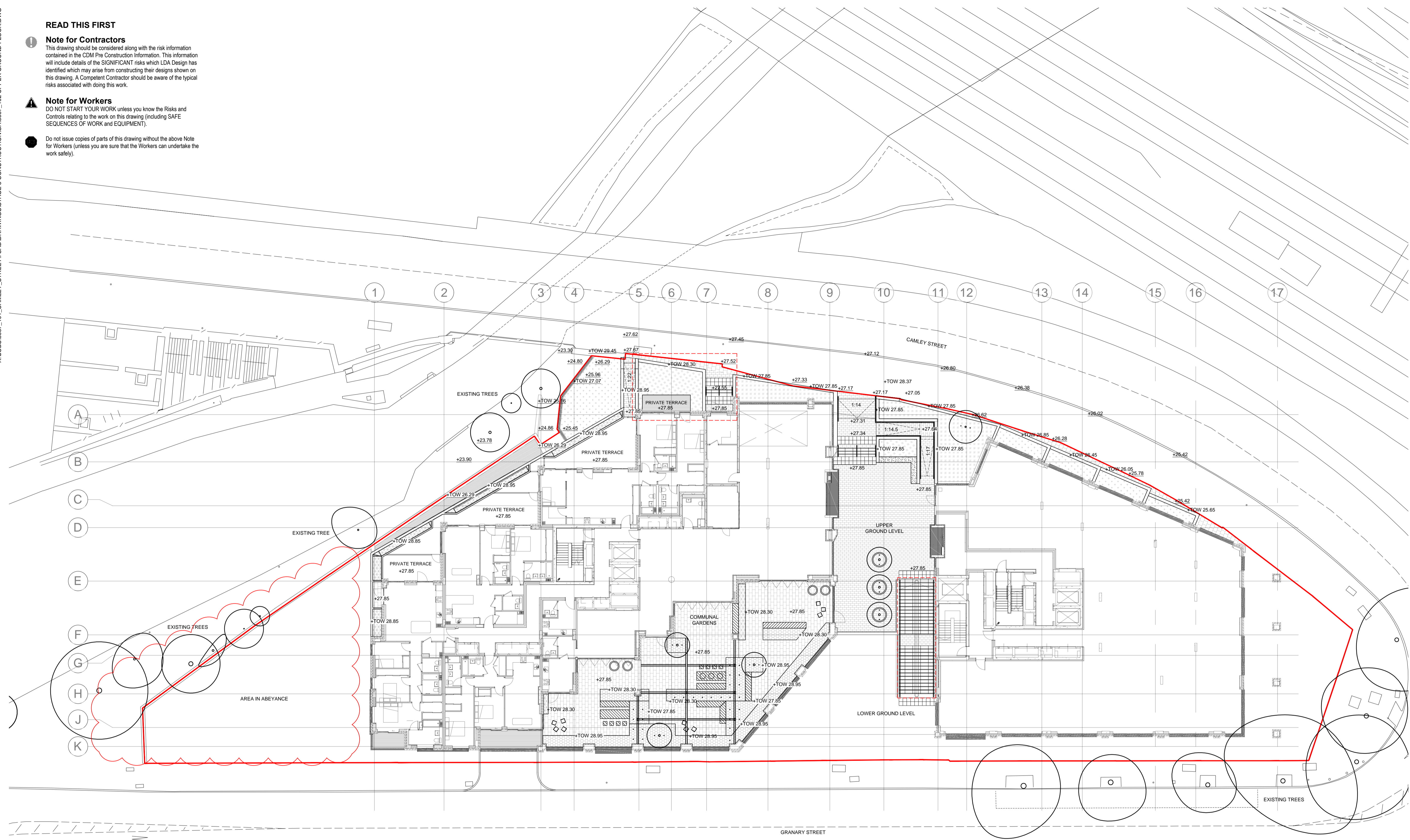
REFER TO SOFTWORKS LAYOUT AND REFERENCE PLAN DWG 5657_400

REFER TO LIGHTING LAYOUT AND REFERENCE PLAN DWG 5657_500

TO BE READ IN CONJUNCTION WITH LANDSCAPE ARCHITECT'S EXTERNAL WORKS SPECIFICATION.

TO BE READ IN CONJUNCTION WITH ARCHITECT'S GA DRAWINGS 0010 SERIES

- SITE BOUNDARY
- GRANITE PAVING TO UPPER AND LOWER GROUND LEVELS
- CONCRETE EFFECT PORCELAIN TILES
- CONCRETE FLAG PAVING (TO MATCH EXISTING)
- SMOOTH ASPHALT SURFACING
- CORDUROY TACTILE PAVING TO TOP AND BOTTOM OF STEPS
- STEP UNITS
- CYCLE STAND
- GRANITE BENCH WITH RECESSED LIGHTING
- TIMBER BENCH WITH RECESSED LIGHTING
- GIANT FLOWERPOT PLANTER
- FLOWERPOT PLANTER
- PLANTING MIX - UPPER AND LOWER GROUND LEVELS
- PLANTING MIX - COMMUNAL GARDENS
- PLANTING MIX - WOODLAND BORDER
- CLIPPED HEDGE
- PROPOSED SPECIMEN TREE PLANTING
- EXISTING LEVELS
- PROPOSED LEVELS



C	Private terrace and external steps coordinated with architecture	AW	22/01/19
B	Construction issue, coordination with architecture	AW	21/01/19
A	Canal bridge removed	AW	17/01/19

REV.	DESCRIPTION	APP.	DATE
------	-------------	------	------

LDA DESIGN

PROJECT TITLE
101 Camley Street

DRAWING TITLE
Stage 5: Construction
Landscape General Arrangement
Upper Ground Floor

ISSUED BY: Exeter T: 01392 260 430
DATE: Jan 2019 DRAWN: AW
SCALE: A1 1:200 CHECKED: RAs
STATUS: Construction APPROVED: RAs

DWG. NO 5657_102

No dimensions are to be scaled from this drawing. All dimensions are to be checked on site. Area measurements for indicative purposes only.

© LDA Design Consulting Ltd. Quality Assured to BS EN ISO 9001 : 2008
Sources: Ordnance Survey



READ THIS FIRST

Note for Contractors
This drawing should be considered along with the risk information contained in the CDM Pre Construction Information. This information will include details of the SIGNIFICANT risks which LDA Design has identified which may arise from constructing their designs shown on this drawing. A Competent Contractor should be aware of the typical risks associated with doing this work.

Note for Workers
DO NOT START YOUR WORK unless you know the Risks and Controls relating to the work on this drawing (including SAFE SEQUENCES OF WORK AND EQUIPMENT).

Do not issue copies of parts of this drawing without the above Note for Workers (unless you are sure that the Workers can undertake the work safely).

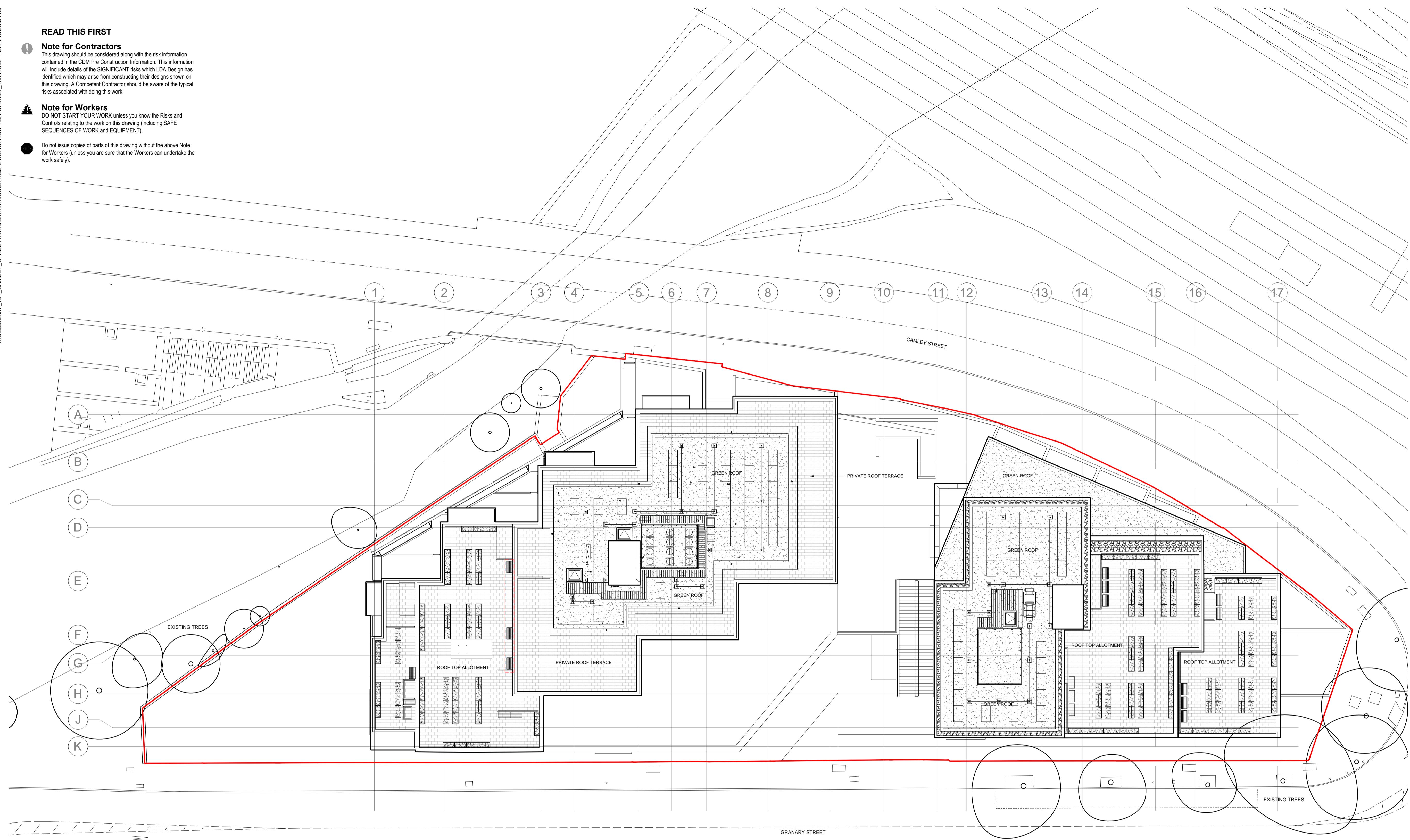
LEGEND

1. This drawing is to be read in conjunction with all other drawings and specifications.
2. Do not scale off this drawing. Written dimensions to be taken only.
3. Any discrepancies found between this drawing and other drawings and specifications in the construction documents must be referred to the Landscape Architect prior to work commencing.
4. This drawing must not be copied in whole or in part without written consent of LDA design.
5. These drawings are for finishes only. All foundation, fixing, paving depths and drainage details to be provided by others.
6. All dimensions in mm unless otherwise stated.
7. Where dimension sizes of units are given they state length x width x depth.

NOTES:

- REFER TO GENERAL ARRANGEMENT LAYOUT AND REFERENCE PLANS DWG 5657_100_104
- REFER TO HARDWORKS LAYOUT AND REFERENCE PLAN DWG 5657_200
- REFER TO FURNITURE LAYOUT AND REFERENCE PLAN DWG 5657_300
- REFER TO SOFTWORKS LAYOUT AND REFERENCE PLAN DWG 5657_400
- REFER TO LIGHTING LAYOUT AND REFERENCE PLAN DWG 5657_500
- TO BE READ IN CONJUNCTION WITH LANDSCAPE ARCHITECT'S EXTERNAL WORKS SPECIFICATION.
- TO BE READ IN CONJUNCTION WITH ARCHITECT'S GA DRAWINGS 0010 SERIES

- SITE BOUNDARY
- CONCRETE EFFECT PORCELAIN TILES
- SEDUM BLANKET TO GREEN ROOF
- BESPOKE RAISED MOVEABLE PLANTER WITH TRELLIS
- BESPOKE RAISED MOVEABLE PLANTER WITH HANDRAIL
- BESPOKE RAISED MOVEABLE PLANTER
- BESPOKE MOVEABLE STORAGE BOX



C	Moveable planter with handrail added to rooftop allotment	AW	04/02/19
B	Relocated moveable storage box from entrance	AW	21/01/19
A	Removal of planters to edge of parapet	AW	18/11/18

LDĀDESIGN

PROJECT TITLE
101 Camley Street

DRAWING TITLE
Stage 5: Construction
Landscape General Arrangement
Roof Terraces

ISSUED BY	Exeter	T:	01392 260 430
DATE	Jan 2018	DRAWN	AW
SCALE:RA1	1:200	CHECKED	RAs
STATUS	Construction	APPROVED	RAs

DWG. NO 5657_103

No dimensions are to be scaled from this drawing. All dimensions are to be checked on site. Area measurements for indicative purposes only.

© LDA Design Consulting Ltd. Quality Assured to BS EN ISO 9001 : 2008
Sources: Ordnance Survey

READ THIS FIRST

- Note for Contractors**
This drawing should be considered along with the risk information contained in the CDM Pre Construction Information. This information will include details of the SIGNIFICANT risks which LDA Design has identified which may arise from constructing their designs shown on this drawing. A Competent Contractor should be aware of the typical risks associated with doing this work.
- Note for Workers**
DO NOT START YOUR WORK unless you know the Risks and Controls relating to the work on this drawing (including SAFE SEQUENCES OF WORK and EQUIPMENT).
- Do not issue copies of parts of this drawing without the above Note for Workers (unless you are sure that the Workers can undertake the work safely).

LEGEND

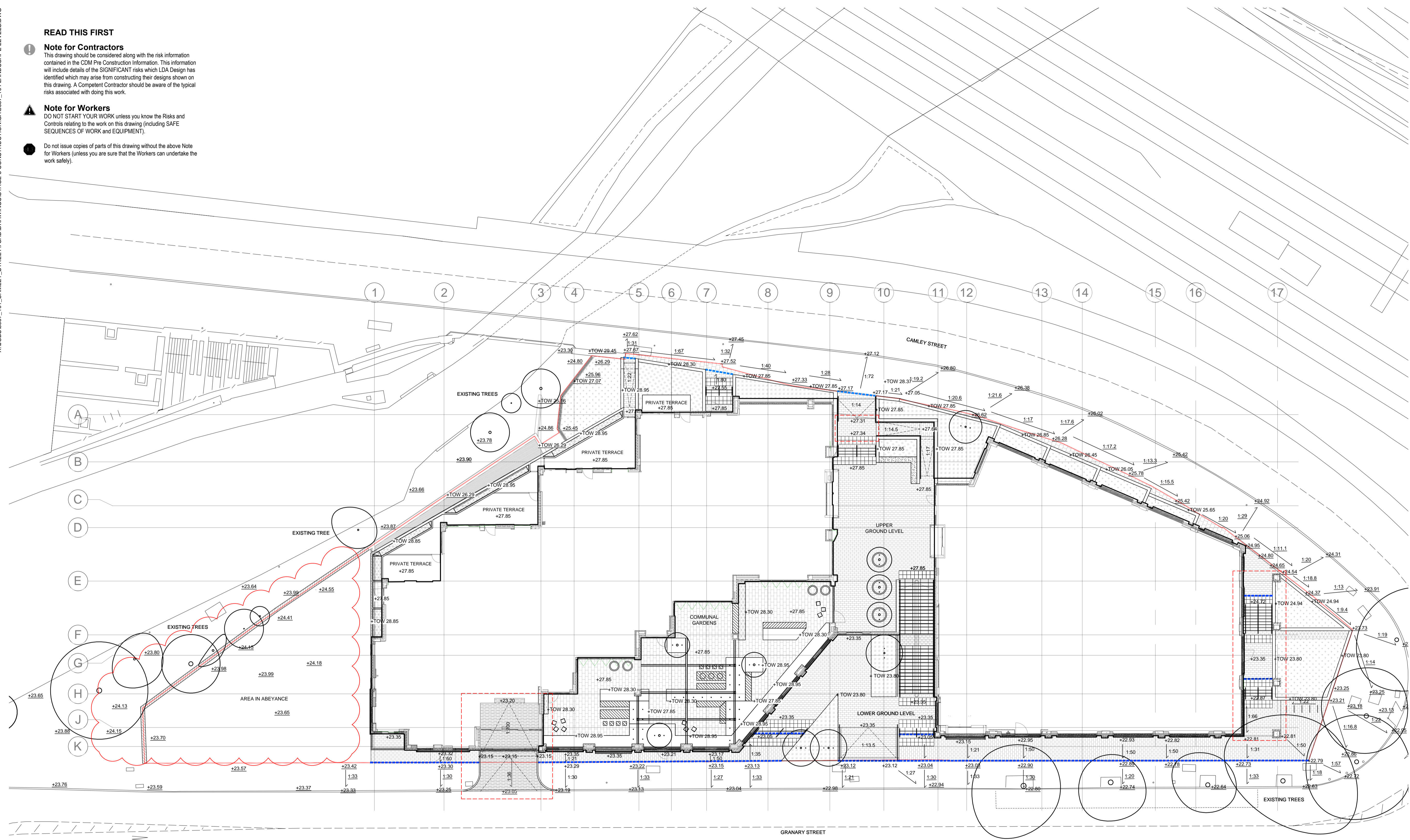
- NOTES:**
- This drawing is to be read in conjunction with all other drawings and specifications.
 - Do not scale off this drawing. Written dimensions to be taken only.
 - Any discrepancies found between this drawing and other drawings and specifications in the construction documents must be referred to the Landscape Architect prior to work commencing.
 - This drawing must not be copied in whole or in part without written consent of LDA Design.
 - These drawings are for finishes only. All foundation, fixing, paving depths and drainage details to be provided by others.
 - All dimensions in mm unless otherwise stated.
 - Where dimension sizes of units are given they state length x width x depth.

- NOTES:**
- REFER TO GENERAL ARRANGEMENT LAYOUT AND REFERENCE PLANS DWG 5657_100 - 104
 - REFER TO HARDWORKS LAYOUT AND REFERENCE PLAN DWG 5657_200
 - REFER TO FURNITURE LAYOUT AND REFERENCE PLAN DWG 5657_300
 - REFER TO SOFTWARES LAYOUT AND REFERENCE PLAN DWG 5657_400
 - REFER TO LIGHTING LAYOUT AND REFERENCE PLAN DWG 5657_500
 - TO BE READ IN CONJUNCTION WITH LANDSCAPE ARCHITECT'S EXTERNAL WORKS SPECIFICATION.
 - TO BE READ IN CONJUNCTION WITH ARCHITECT'S GA DRAWINGS 0010 SERIES

- ALL LEVELS SHOWN ARE FINISHED LEVELS. CONTRACTOR TO MAKE ALLOWANCE FOR NATURAL SETTLEMENT OF TOPSOIL (TYPICALLY 20 - 30mm)
- CONTRACTOR TO CONFIRM DEPTH AND LOCATION OF SERVICES BEFORE STARTING ANY WORKS ON SITE.
- CONTRACTOR TO ADJUST LEVELS IF NECESSARY TO TIE INTO EXISTING LEVELS. SIGNIFICANT DEVIATION TO BE DISCUSSED WITH SUPERVISOR PRIOR TO COMMENCEMENT OF ADJUSTMENT.
- CONTRACTOR TO ENSURE ALL LEVELS FOR SOFTWARES TIE IN WITH HARDWORKS LEVELS AND ALIGNMENT. ALL HARDWORKS LEVELS SHOWN ARE INDICATIVE ONLY.
- BASIS OF DESIGN:
ALL PROPOSED LEVELS ARE TO BE GRADED AS REQUIRED CREATING A SMOOTH TRANSITION WITH EXISTING LEVELS.
- TO BE READ IN CONJUNCTION WITH ENGINEER'S LEVELS FOR SURFACE WATER DRAINAGE.

LEGEND

- SITE BOUNDARY
- EXISTING LEVELS
- PROPOSED LEVELS
- EXISTING GRADIENT
- PROPOSED GRADIENT
- RAMP/ SLOPE GRADIENT
- DREXUS OFFSET SLOT DRAIN DUO SUPPLIER: MARSHALLS
LOCATION INDICATIVE ONLY
FOUNDATIONS AND FIXINGS TO CONTRACTOR'S DESIGN



F	Level adjusted for nominal drainage	AW 18/02/19
	Building entrance coordinated with car lift	
E	Construction issue, coordination with architecture	AW 21/01/19
D	Canal bridge removed	AW 17/01/19
C	Changes to updated GA	AW 08/09/17
B	Change to Granary St entrance	AW 20/06/17
A	Change to Camley St entrance	AW 19/06/17

LDA DESIGN

PROJECT TITLE
101 Camley Street

DRAWING TITLE
Stage 5: Construction
Landscape Levels Plan

ISSUED BY	Exeter	T: 01392 260 430	
DATE	Jan 2019	DRAWN	AW
SCALE	1:200	CHECKED	RAs
STATUS	Construction	APPROVED	RAs

DWG. NO 5657_104

No dimensions are to be scaled from this drawing. All dimensions are to be checked on site. Area measurements for indicative purposes only.

© LDA Design Consulting Ltd. Quality Assured to BS EN ISO 9001 : 2008
Sources: Ordnance Survey

X:\JOBS\657_101_CAMLEY_STREET\CD\DRAWINGS\STAGE 5 CONSTRUCTION\HARDWORKS\657_200_HARDWORKS_LAYOUT_AND_REF_UPPER_AND_LOWER_GROUND.DWG

READ THIS FIRST

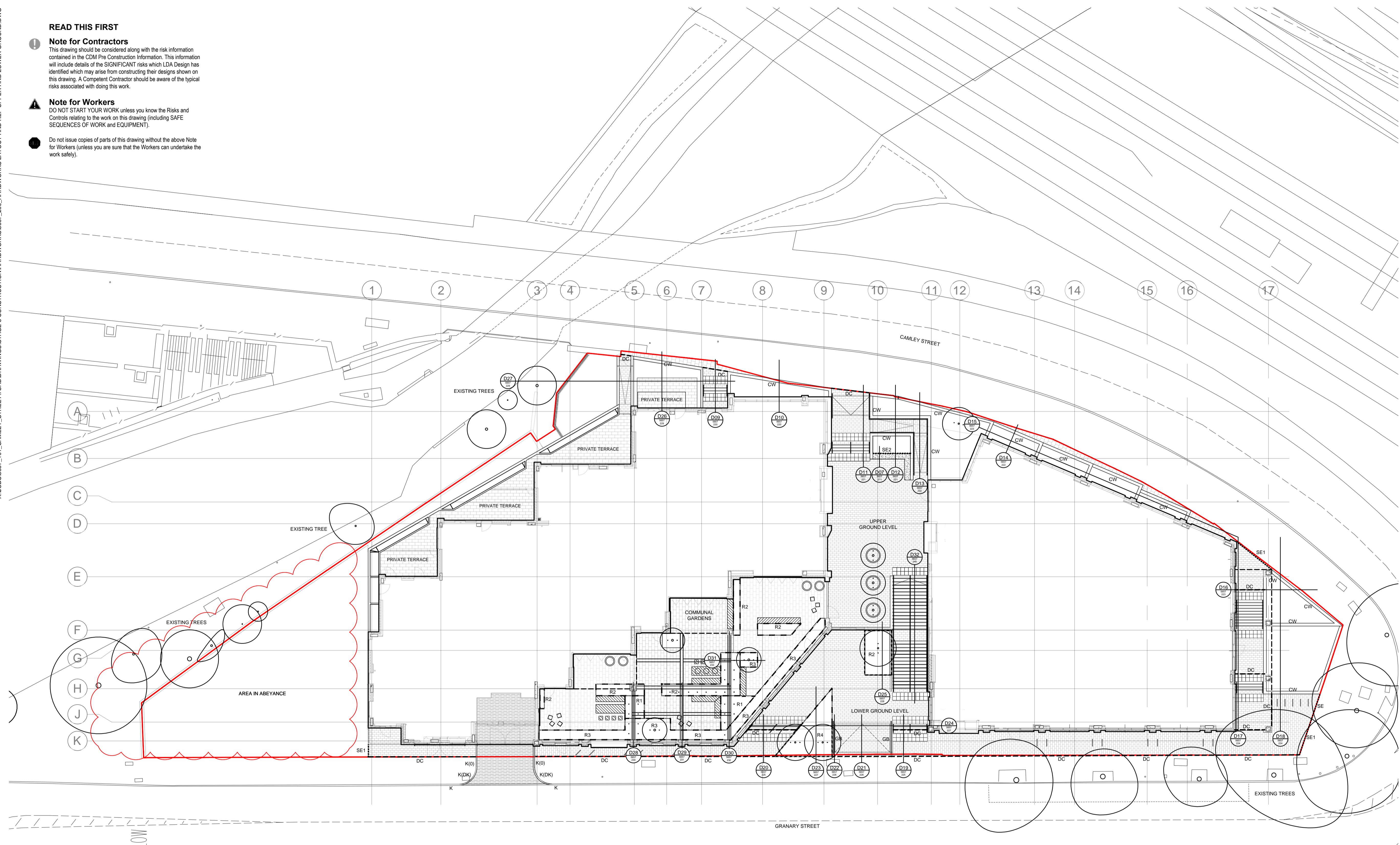
Note for Contractors

This drawing should be considered along with the risk information contained in the CDM Pre Construction Information. This information will include details of the SIGNIFICANT risks which LDA Design has identified which may arise from constructing their designs shown on this drawing. A Compliant Contractor should be aware of the typical risks associated with doing this work.

Note for Workers

DO NOT START YOUR WORK unless you know the Risks and Controls relating to the work on this drawing (including SAFE SEQUENCES OF WORK and EQUIPMENT).

Do not issue copies of parts of this drawing without the above Note for Workers (unless you are sure that the Workers can undertake the work safely).



LEGEND

1. This drawing is to be read in conjunction with all other drawings and specifications.
2. Do not scale off this drawing. Written dimensions to be taken only.
3. Any discrepancies found between this drawing and other drawings and specifications in the construction documents must be referred to the Landscape Architect prior to work commencing.
4. This drawing must not be copied in whole or in part without written consent of LDA Design.
5. These drawings are for finishes only. All foundation, fixing, paving depths and drainage details to be provided by others.
6. All dimensions in mm unless otherwise stated.
7. Where dimension sizes of units are given they state length x width x depth.

NOTES:

REFER TO GENERAL ARRANGEMENT LAYOUT AND REFERENCE PLANS DWG 5657_100 - 104

REFER TO HARDWORKS LAYOUT AND REFERENCE PLAN DWG 5657_200

REFER TO FURNITURE LAYOUT AND REFERENCE PLAN DWG 5657_300

REFER TO SOFTWORKS LAYOUT AND REFERENCE PLAN DWG 5657_400

REFER TO LIGHTING LAYOUT AND REFERENCE PLAN DWG 5657_500

TO BE READ IN CONJUNCTION WITH LANDSCAPE ARCHITECT'S EXTERNAL WORKS SPECIFICATION.

TO BE READ IN CONJUNCTION WITH ARCHITECT'S GA DRAWINGS 0010 SERIES

ALL EXISTING TREES TO BE PROTECTED DURING CONSTRUCTION

MANHOLE COVERS INDICATIVELY SHOWN. ALL SERVICE MANHOLE COVERS TO BE RECESSED WHERE POSSIBLE AND TO CONTAIN ADJACENT PAVING MATERIAL. COVER TO BE ROTATED TO ALIGN WITH ORIENTATION OF SURROUNDING EDGINGS/KERBS. REFER TO ENGINEER'S DETAILS FOR MORE INFORMATION

- SITE BOUNDARY
- GRANITE PAVING
HARDSCAPE: EQUAL MIX OF ROYAL VIOLET PEARL, JINIAN BLUE
RANDOM LENGTH STRETCHER BOND COURSING
REFER TO DWG 5657_210 D02-D04
- CONCRETE EFFECT PORCELAIN TILES
KINLEY SYSTEMS, VENICE GREY
SINGLE LENGTH STRETCHER BOND COURSING
REFER TO DWG 5657_210 D05
- CONCRETE EFFECT PORCELAIN TILES
KINLEY SYSTEMS, VENICE MOKA
SINGLE LENGTH STRETCHER BOND COURSING
REFER TO DWG 5657_211 D05
- CONCRETE FLAG PAVING (TO MATCH EXISTING)
MARSHALLS, STANDARD GREY PIMPLE FLAG PAVING
COLOUR: BUFF
SINGLE LENGTH STRETCHER BOND COURSING
REFER TO DWG 5657_210 D01
- SMOOTH ASPHALT SURFACING
TO ENGINEER'S DESIGN
- STANDARD PRECAST CONCRETE KERB, 125 UPSTAND
MARSHALLS BULLNOSE, SILVER GREY,
(DK) DROPPER KERB
- STANDARD PRECAST CONCRETE KERB, 125 UPSTAND
MARSHALLS BULLNOSE, SILVER GREY,
FLUSH TO ADJACENT SURFACES
- STEEL EDGING
2000 (L) x 6 (W) x 150mm (D)
HI GRADE HGR, GALVANISED
SUPPLIER: KINLEY SYSTEMS LTD OR EQUIVALENT AGREED
TO BE FLUSH TO TOP OF ADJACENT SURFACING
REFER TO DWG 5657_211 D06
- STEEL EDGING TO UPPER GROUND PLANTING
2000 (L) x 6 (W) x 85mm (H)
HI GRADE HGR, GALVANISED
SUPPLIER: KINLEY SYSTEMS LTD OR EQUIVALENT AGREED
TO BE FLUSH TO TOP OF ADJACENT SURFACING
REFER TO DWG 5657_210 D07
- GRANITE BLOCK EDGE
HARDSCAPE, ROYAL WHITE FLAMED FINISH
97mm X 295mm X HEIGHT VARIES
REFER TO DWG 5657_226
- LINEAR DRAINAGE CHANNEL
MARSHALLS, DREXUS OFFSET SLOT DRAIN DUO
- GRANITE STEP UNITS
HARDSCAPE, ROYAL WHITE FLAMED FINISH
GRANITE WARNING STRIP: CRYSTAL BLACK,
FLAMED FINISH
- GRANITE TACTILE CORDUROY PAVING TO TOP AND
BOTTOM OF STEPS
HARDSCAPE, CRYSTAL BLACK, FLAMED FINISH
- CONCRETE RETAINING WALL - 300mm WIDTH
LIGHT GREY CONCRETE, ACID ETCHED FINISH
TO ENGINEER'S DETAILS AND SPECIFICATION
REFER TO DWG 5657_220 D08
- RAISED PLANTER FLUSH WITH FFL
KINLEY SYSTEMS, PERIMETA PLANTERLINE
STEEL FRAME POWDER COATED TO RAL 7021
- RAISED PLANTER 450mm (H) ABOVE FFL
KINLEY SYSTEMS, PERIMETA PLANTERLINE
STEEL FRAME POWDER COATED TO RAL 7021
- RAISED PLANTER 1100mm (H) ABOVE FFL
KINLEY SYSTEMS, PERIMETA PLANTERLINE
STEEL FRAME POWDER COATED TO RAL 7021

C	Construction issue, coordination with architecture	AW	21/01/19
B	Canal bridge removed	AW	17/01/19
A	Update to latest GA	AW	11/09/17
REV.	DESCRIPTION	AW	DATE

LDA DESIGN

PROJECT TITLE
101 Camley Street

DRAWING TITLE
Stage 5: Construction
Hardworks Layout and Reference Plan
Upper and Lower Ground Floor

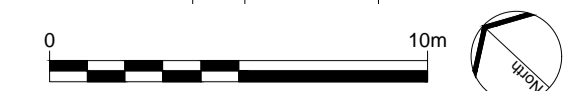
ISSUED BY	Exeter	T: 01392 260 430
DATE	Jan 2019	DRAWN
SCALE	1:200	CHECKED
STATUS	Construction	APPROVED

DWG. NO 5657_200

No dimensions are to be scaled from this drawing. All dimensions are to be checked on site. Area measurements for indicative purposes only.

© LDA Design Consulting Ltd. Quality Assured to BS EN ISO 9001 : 2008

Sources: Ordnance Survey



X:\JOBS\6567_101_CAMLEY_STREET\DRAWINGS\STAGE 5 CONSTRUCTION\HARDWORKS\6567_201_HARDWORKS_LAYOUT AND REF LEVELS 6 & 5.DWG

READ THIS FIRST

Note for Contractors
This drawing should be considered along with the risk information contained in the CDM Pre Construction Information. This information will include details of the SIGNIFICANT risks which LDA Design has identified which may arise from constructing their designs shown on this drawing. A Competent Contractor should be aware of the typical risks associated with doing this work.

Note for Workers
DO NOT START YOUR WORK unless you know the Risks and Controls relating to the work on this drawing (including SAFE SEQUENCES OF WORK AND EQUIPMENT).

Do not issue copies of parts of this drawing without the above Note for Workers (unless you are sure that the Workers can undertake the work safely).

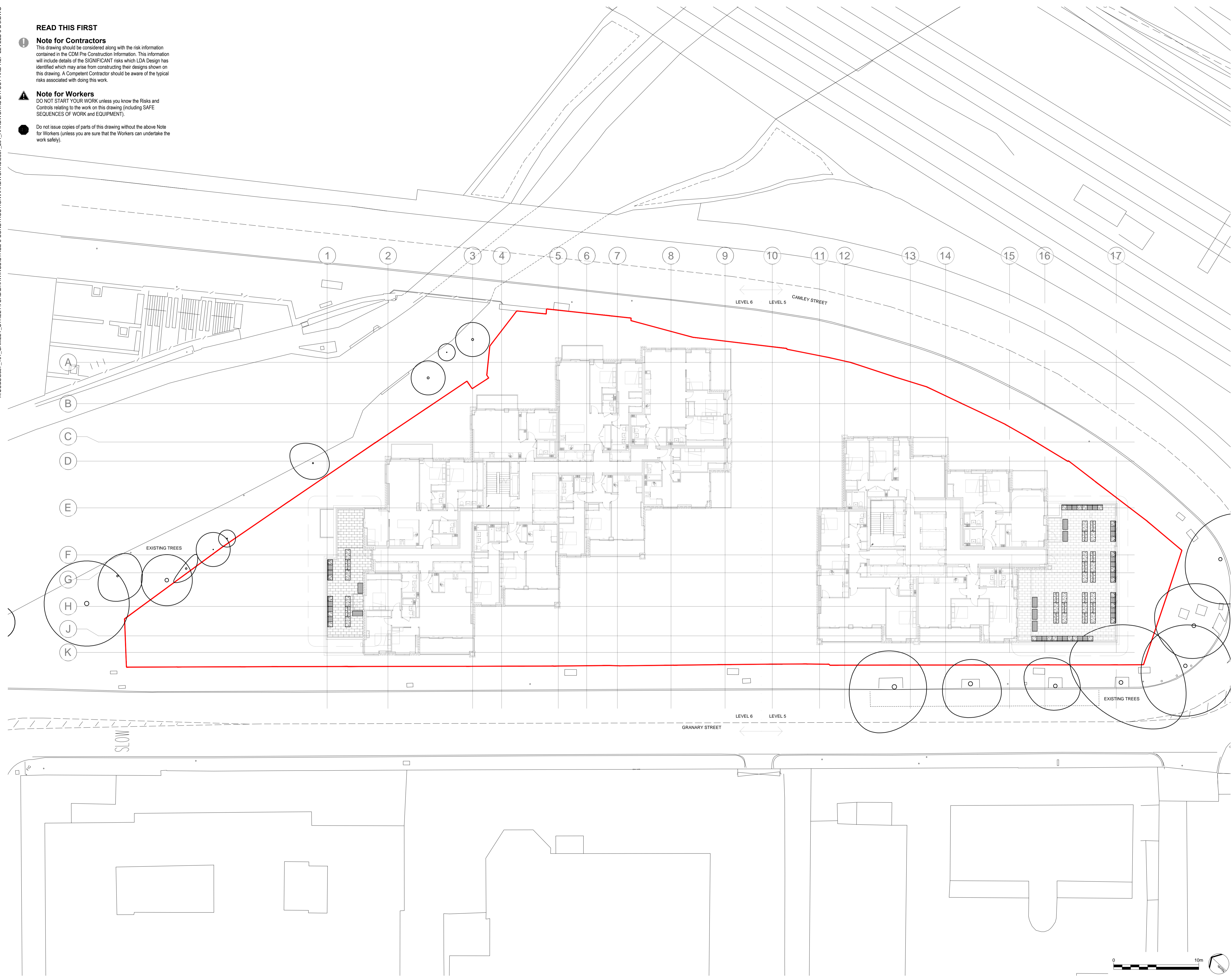
LEGEND

1. This drawing is to be read in conjunction with all other drawings and specifications.
2. Do not scale off this drawing. Written dimensions to be taken only.
3. Any discrepancies found between this drawing and other drawings and specifications in the construction documents must be referred to the Landscape Architect prior to work commencing.
4. This drawing must not be copied in whole or in part without written consent of LDA design.
5. These drawings are for finishes only. All foundation, fixing, paving depths and drainage details to be provided by others.
6. All dimensions in mm unless otherwise stated.
7. Where dimension sizes of units are given they state length x width x depth.

NOTES:

- REFER TO GENERAL ARRANGEMENT LAYOUT AND REFERENCE PLANS DWG 5657_100_104
- REFER TO HARDWORKS LAYOUT AND REFERENCE PLAN DWG 5657_200
- REFER TO FURNITURE LAYOUT AND REFERENCE PLAN DWG 5657_300
- REFER TO SOFTWORKS LAYOUT AND REFERENCE PLAN DWG 5657_400
- REFER TO LIGHTING LAYOUT AND REFERENCE PLAN DWG 5657_500
- TO BE READ IN CONJUNCTION WITH LANDSCAPE ARCHITECT'S EXTERNAL WORKS SPECIFICATION.
- TO BE READ IN CONJUNCTION WITH ARCHITECT'S GA DRAWINGS 0010 SERIES

- SITE BOUNDARY
- CONCRETE EFFECT PORCELAIN TILES
KINLEY SYSTEMS, VENICE GREY
SINGLE LENGTH STRETCHER BOND COURSING
REFER TO DWG 5657_210 D05
- CONCRETE EFFECT PORCELAIN TILES
KINLEY SYSTEMS, VENICE MOKA
SINGLE LENGTH STRETCHER BOND COURSING
REFER TO DWG 5657_211 D05



REV.	DESCRIPTION	APP.	DATE
A	Construction issue	AW	21/01/19

LDA DESIGN

PROJECT TITLE
101 Camley Street

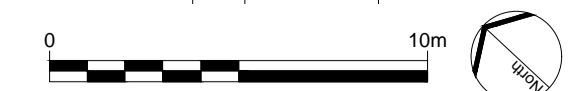
DRAWING TITLE
**Stage 5: Construction
Hardworks Layout and Reference Plan
Roof Terraces Levels 6 & 5**

ISSUED BY	Exeter	T: 01392 260 430	
DATE	Jan 2019	DRAWN	AW
SCALE	1:200	CHECKED	RAs
STATUS	Construction	APPROVED	RAs

DWG. NO 5657_201

No dimensions are to be scaled from this drawing. All dimensions are to be checked on site. Area measurements for indicative purposes only.

© LDA Design Consulting Ltd. Quality Assured to BS EN ISO 9001 : 2008
Sources: Ordnance Survey



X:\JOBS\6567_101_CAMLEY_STREET\CADD\DRAWINGS\STAGE 5 CONSTRUCTION\HARDWORKS\6567_202_HARDWORKS_LAYOUT AND REF LEVELS 9 & 7.DWG

READ THIS FIRST

- Note for Contractors**
This drawing should be considered along with the risk information contained in the CDM Pre Construction Information. This information will include details of the SIGNIFICANT risks which LDA Design has identified which may arise from constructing their designs shown on this drawing. A Competent Contractor should be aware of the typical risks associated with doing this work.
- Note for Workers**
DO NOT START YOUR WORK unless you know the Risks and Controls relating to the work on this drawing (including SAFE SEQUENCES OF WORK AND EQUIPMENT).
- Do not issue copies of parts of this drawing without the above Note for Workers (unless you are sure that the Workers can undertake the work safely).

- LEGEND**
1. This drawing is to be read in conjunction with all other drawings and specifications.
 2. Do not scale off this drawing. Written dimensions to be taken only.
 3. Any discrepancies found between this drawing and other drawings and specifications in the construction documents must be referred to the Landscape Architect prior to work commencing.
 4. This drawing must not be copied in whole or in part without written consent of LDA design.
 5. These drawings are for finishes only. All foundation, fixing, paving depths and drainage details to be provided by others.
 6. All dimensions in mm unless otherwise stated.
 7. Where dimension sizes of units are given they state length x width x depth.

NOTES:

REFER TO GENERAL ARRANGEMENT LAYOUT AND REFERENCE PLANS DWG 5657_100_104

REFER TO HARDWORKS LAYOUT AND REFERENCE PLAN DWG 5657_200




REFER TO FURNITURE LAYOUT AND REFERENCE PLAN DWG 5657_300

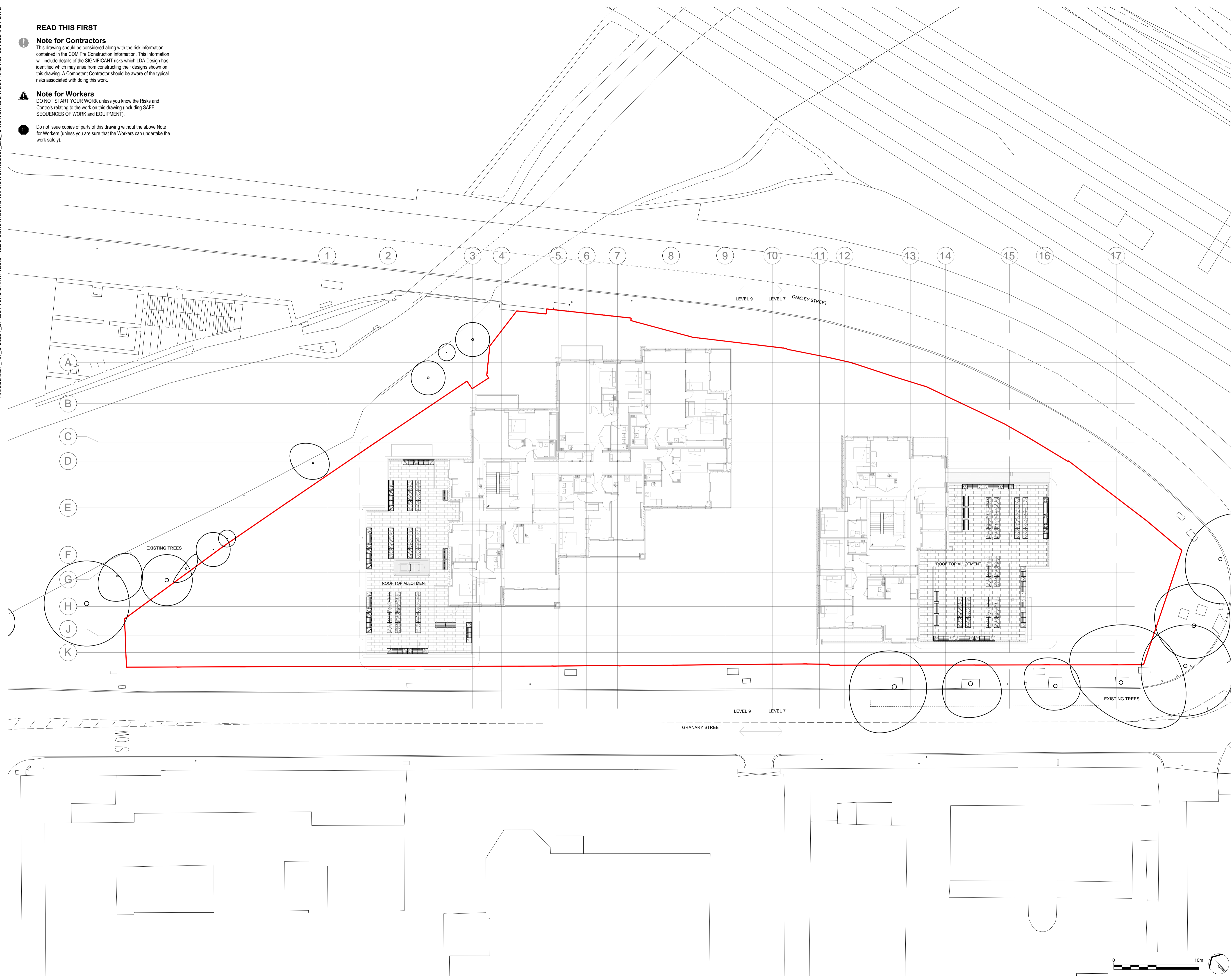
REFER TO SOFTWORKS LAYOUT AND REFERENCE PLAN DWG 5657_400

REFER TO LIGHTING LAYOUT AND REFERENCE PLAN DWG 5657_500

TO BE READ IN CONJUNCTION WITH LANDSCAPE ARCHITECT'S EXTERNAL WORKS SPECIFICATION.

TO BE READ IN CONJUNCTION WITH ARCHITECT'S GA DRAWINGS 0010 SERIES

-  SITE BOUNDARY
-  CONCRETE EFFECT PORCELAIN TILES
KINLEY SYSTEMS, VENICE GREY
SINGLE LENGTH STRETCHER BOND COURSING
REFER TO DWG 5657_210 D05
-  CONCRETE EFFECT PORCELAIN TILES
KINLEY SYSTEMS, VENICE MOKA
SINGLE LENGTH STRETCHER BOND COURSING
REFER TO DWG 5657_211 D05



REV.	DESCRIPTION	APP.	DATE
A	Construction issue	AW	21/01/19

LDA DESIGN

PROJECT TITLE
101 Camley Street

DRAWING TITLE
**Stage 5: Construction
Hardworks Layout and Reference Plan
Roof Terraces Levels 9 & 7**

ISSUED BY	Exeter	T: 01392 260 430	
DATE	Jan 2019	DRAWN	AW
SCALE	1:200	CHECKED	RAs
STATUS	Construction	APPROVED	RAs

DWG. NO 5657_202

No dimensions are to be scaled from this drawing. All dimensions are to be checked on site. Area measurements for indicative purposes only.

© LDA Design Consulting Ltd. Quality Assured to BS EN ISO 9001 : 2008
Sources: Ordnance Survey

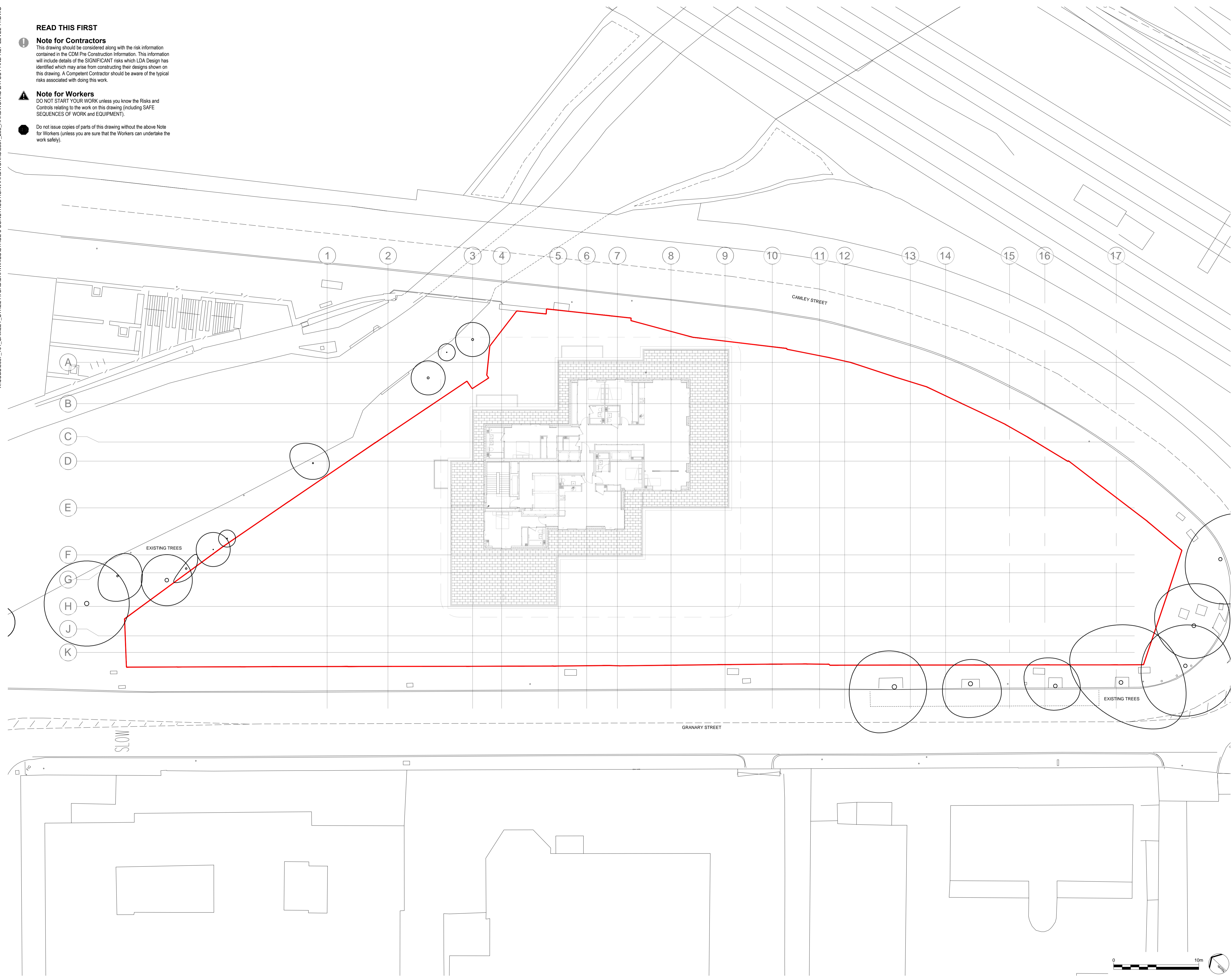
X:\JOBS\5657_101_CAMLEY_STREET\CADD\DRAWINGS\STAGE 5 CONSTRUCTION\HARDWORKS\5657_203_HARDWORKS_LAYOUT_AND_REF_LEVEL_11.DWG

READ THIS FIRST

- Note for Contractors**
This drawing should be considered along with the risk information contained in the CDM Pre Construction Information. This information will include details of the SIGNIFICANT risks which LDA Design has identified which may arise from constructing their designs shown on this drawing. A Competent Contractor should be aware of the typical risks associated with doing this work.
- Note for Workers**
DO NOT START YOUR WORK unless you know the Risks and Controls relating to the work on this drawing (including SAFE SEQUENCES OF WORK AND EQUIPMENT).
- Do not issue copies of parts of this drawing without the above Note for Workers (unless you are sure that the Workers can undertake the work safely).

- LEGEND**
- This drawing is to be read in conjunction with all other drawings and specifications.
 - Do not scale off this drawing. Written dimensions to be taken only.
 - Any discrepancies found between this drawing and other drawings and specifications in the construction documents must be referred to the Landscape Architect prior to work commencing.
 - This drawing must not be copied in whole or in part without written consent of LDA design.
 - These drawings are for finishes only. All foundation, fixing, paving depths and drainage details to be provided by others.
 - All dimensions in mm unless otherwise stated.
 - Where dimension sizes of units are given they state length x width x depth.
- NOTES:**
- REFER TO GENERAL ARRANGEMENT LAYOUT AND REFERENCE PLANS DWG 5657_100_104
 - REFER TO HARDWORKS LAYOUT AND REFERENCE PLAN DWG 5657_200
 - REFER TO FURNITURE LAYOUT AND REFERENCE PLAN DWG 5657_300
 - REFER TO SOFTWORKS LAYOUT AND REFERENCE PLAN DWG 5657_400
 - REFER TO LIGHTING LAYOUT AND REFERENCE PLAN DWG 5657_500
 - TO BE READ IN CONJUNCTION WITH LANDSCAPE ARCHITECT'S EXTERNAL WORKS SPECIFICATION.
 - TO BE READ IN CONJUNCTION WITH ARCHITECT'S GA DRAWINGS 0010 SERIES

- SITE BOUNDARY
- CONCRETE EFFECT PORCELAIN TILES
KINLEY SYSTEMS, VENICE GREY
SINGLE LENGTH STRETCHER BOND COURSING
REFER TO DWG 5657_210 005



REV.	DESCRIPTION	APP. DATE
A	Construction Issue	AW 21/01/19

LDA DESIGN

PROJECT TITLE
101 Camley Street

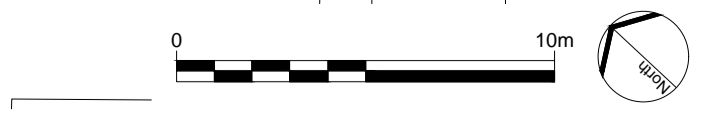
DRAWING TITLE
Stage 5: Construction
Hardworks Layout and Reference Plan
Roof Terraces Level 11

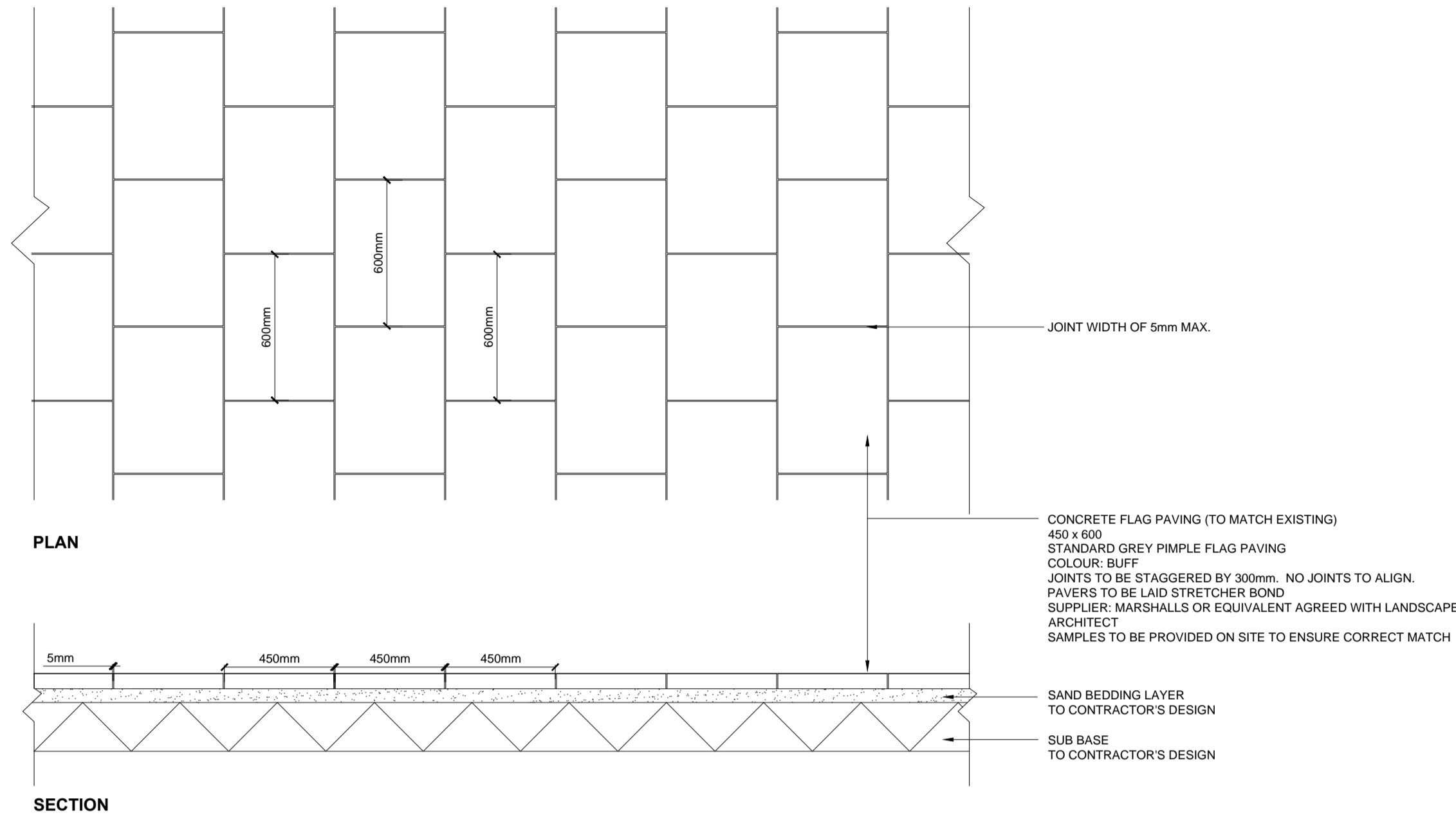
ISSUED BY	Exeter	T: 01392 260 430
DATE	Jan 2019	DRAWN AW
SCALE:RA1	1:200	CHECKED RAs
STATUS	Construction	APPROVED RAs

DWG. NO 5657_203

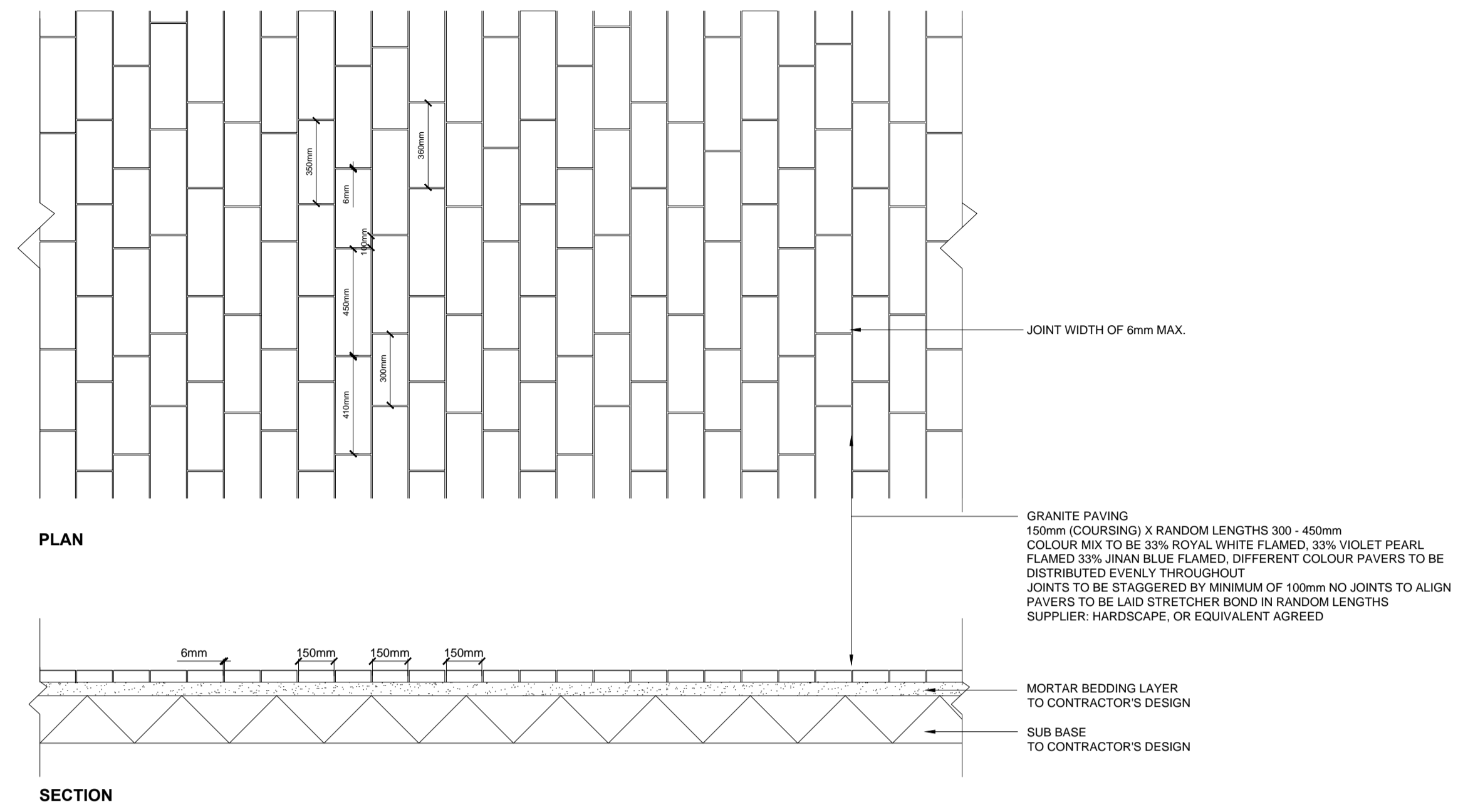
No dimensions are to be scaled from this drawing. All dimensions are to be checked on site. Area measurements for indicative purposes only.

© LDA Design Consulting Ltd. Quality Assured to BS EN ISO 9001 : 2008
Sources: Ordnance Survey

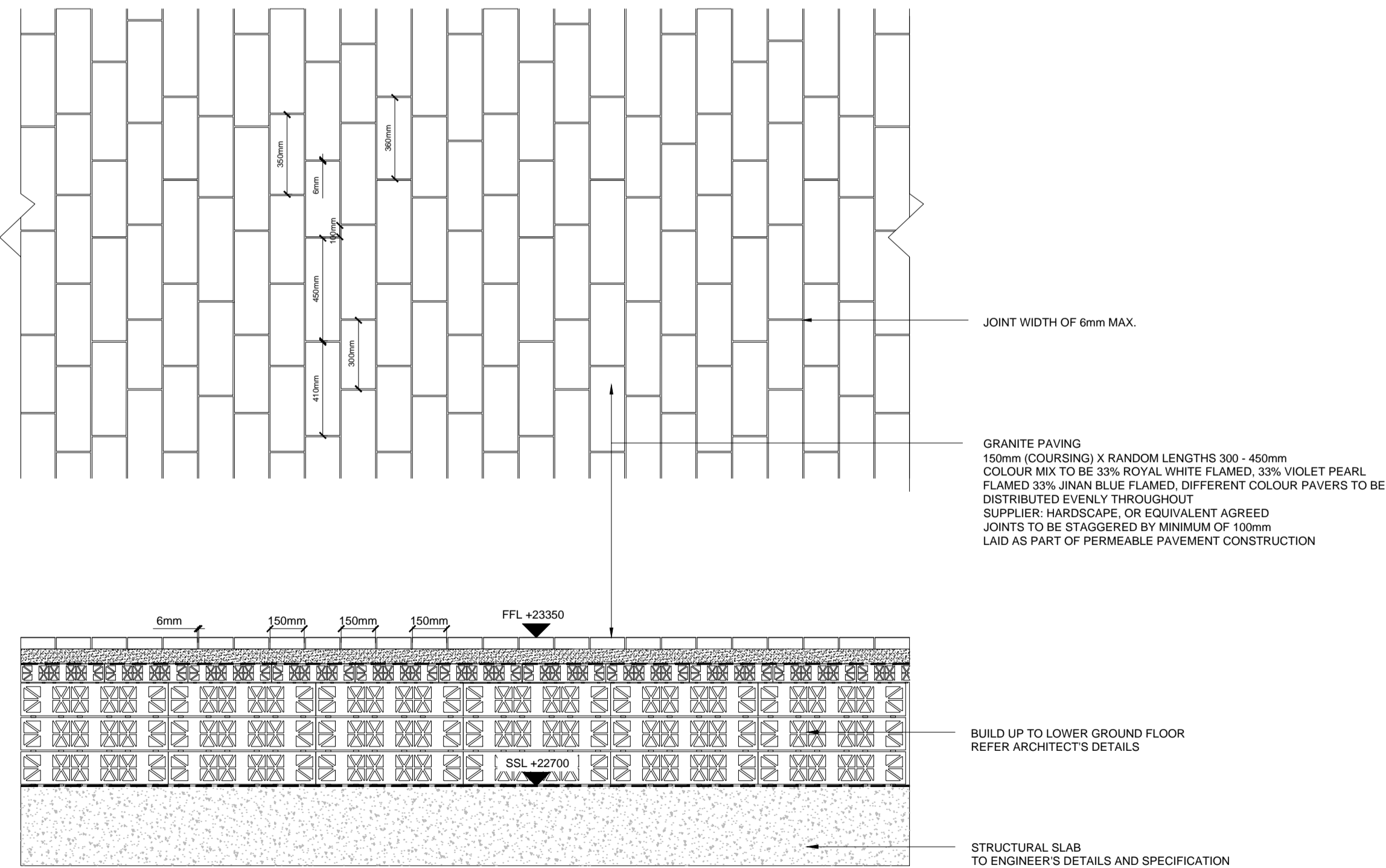




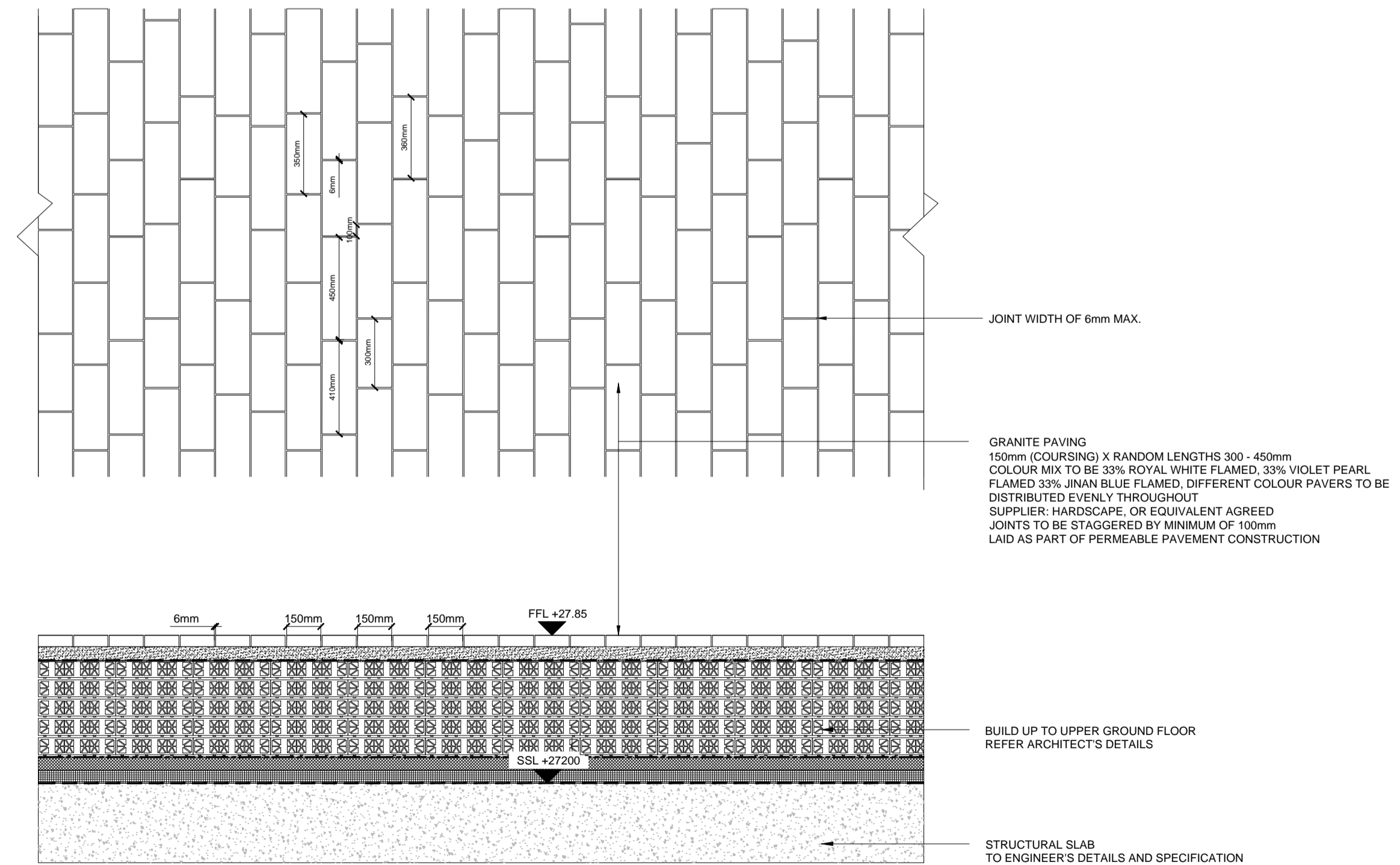
D01 CONCRETE FLAG PAVING (TO MATCH EXISTING)
SCALE 1 : 20



D02 TYPICAL GRANITE PAVING TO CAMLEY AND GRANARY ST
SCALE 1 : 20



D03 TYPICAL PAVING AREA TO LOWER GROUND FLOOR
SCALE 1 : 20



D04 TYPICAL PAVING AREA TO UPPER GROUND FLOOR
SCALE 1 : 20

LEGEND

1. This drawing is to be read in conjunction with all other drawings and specifications.
2. Do not scale off this drawing. Written dimensions to be taken only.
3. Any discrepancies found between this drawing and other drawings and specifications in the construction documents must be referred to the Landscape Architect prior to work commencing.
4. This drawing must not be copied in whole or in part without written consent of LDA design.
5. These drawings are for finishes only. All foundation, fixing, paving depths and drainage details to be provided by others.
6. All dimensions in mm unless otherwise stated.
7. Where dimension sizes of units are given they state length x width x depth.

NOTES:

- REFER TO GENERAL ARRANGEMENT LAYOUT AND REFERENCE PLANS DWG 5657_100-104
- REFER TO HARDWORKS LAYOUT AND REFERENCE PLANS DWG 5657_200
- REFER TO FURNITURE LAYOUT AND REFERENCE PLANS DWG 5657_400
- REFER TO SOFTWARES LAYOUT AND REFERENCE PLANS DWG 5657_400
- TO BE READ IN CONJUNCTION WITH LANDSCAPE ARCHITECT'S EXTERNAL WORKS SPECIFICATION
- TO BE READ IN CONJUNCTION WITH ARCHITECT'S GA DRAWINGS 0010 SERIES

READ THIS FIRST

- Note for Contractors**
This drawing should be considered along with the risk information contained in the CDM Pre Construction Information. This information will include details of the SIGNIFICANT risks which LDA Design has identified which may arise from constructing their designs shown on this drawing. A Competent Contractor should be aware of the typical risks associated with doing this work.
- Note for Workers**
DO NOT START YOUR WORK unless you know the Risks and Controls relating to the work on this drawing (including SAFE SEQUENCES OF WORK and EQUIPMENT).
- Do not issue copies of parts of this drawing without the above Note for Workers (unless you are sure that the Workers can undertake the work safely).

REV.	DESCRIPTION	DATE
B	Construction issue	AW 21/01/19
A	Change to paving mix	AW 11/09/17

LDA DESIGN

PROJECT TITLE
101 Camley Street

DRAWING TITLE
Stage 5: Construction
Paving Details

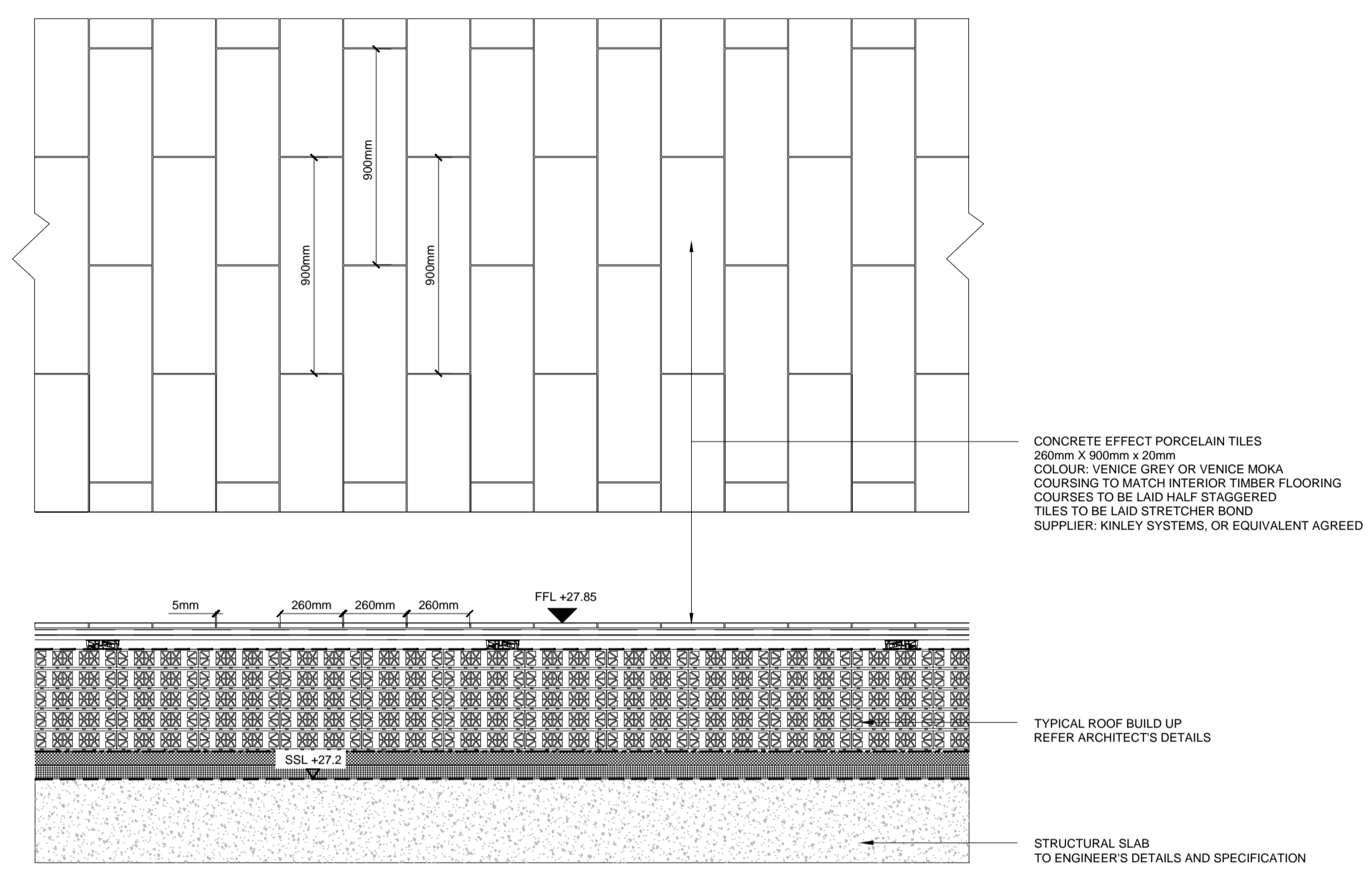
ISSUED BY	DATE	SCALE	STATUS	EXETER	JAN 2019	1:20	CONSTRUCTION	T: 01392 260430	AW	RA	RA
Exeter	Jan 2019	1:20	Construction	AW	RA	RA	AW	RA	RA	RA	RA

DWG. NO 5657_210

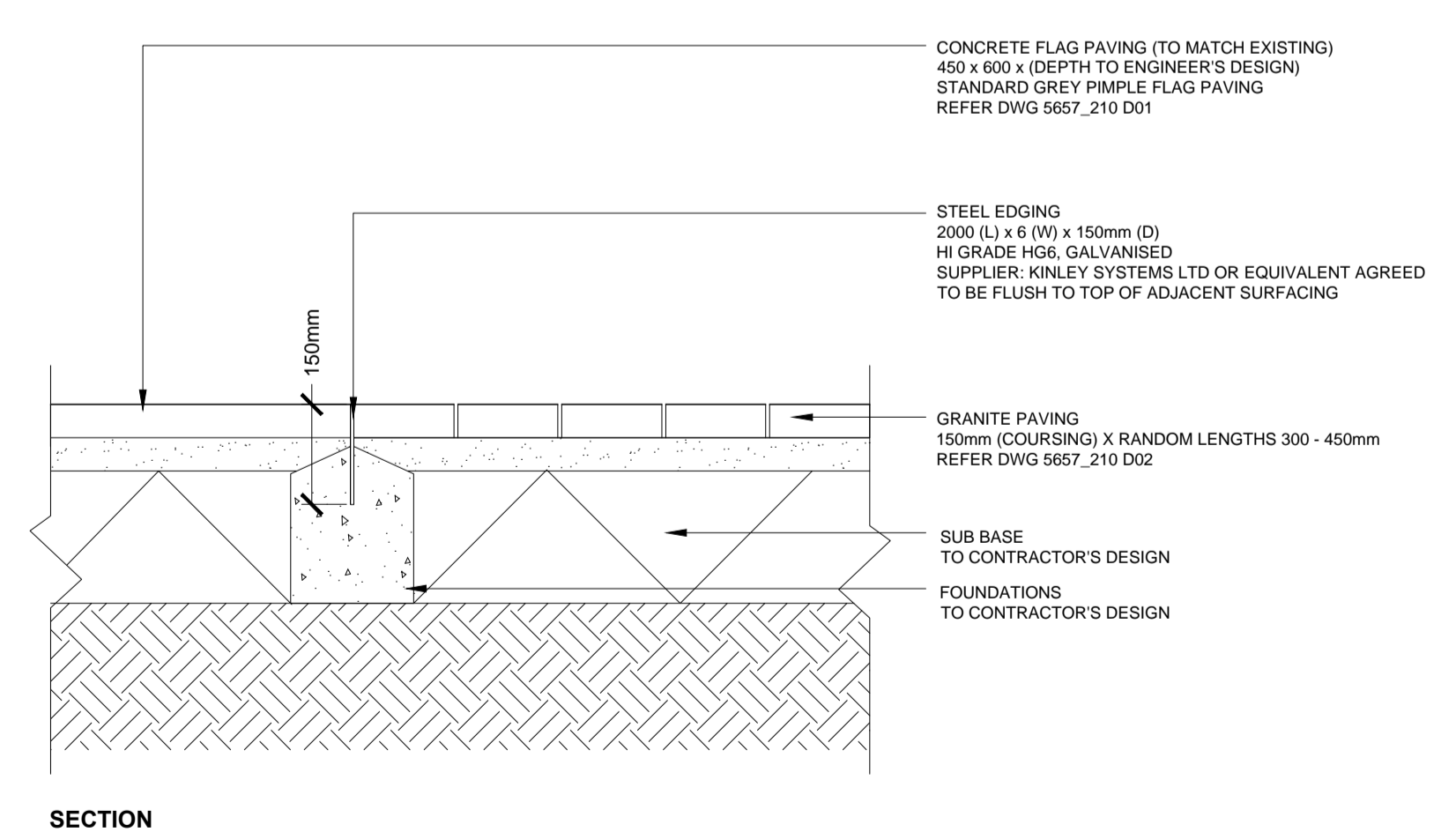
No dimensions are to be scaled from this drawing.
All dimensions are to be checked on site.
Area measurements for indicative purposes only.

© LDA Design Consulting LLP. Quality Assured to BS EN ISO 9001 : 2000
Sources: Ordnance Survey

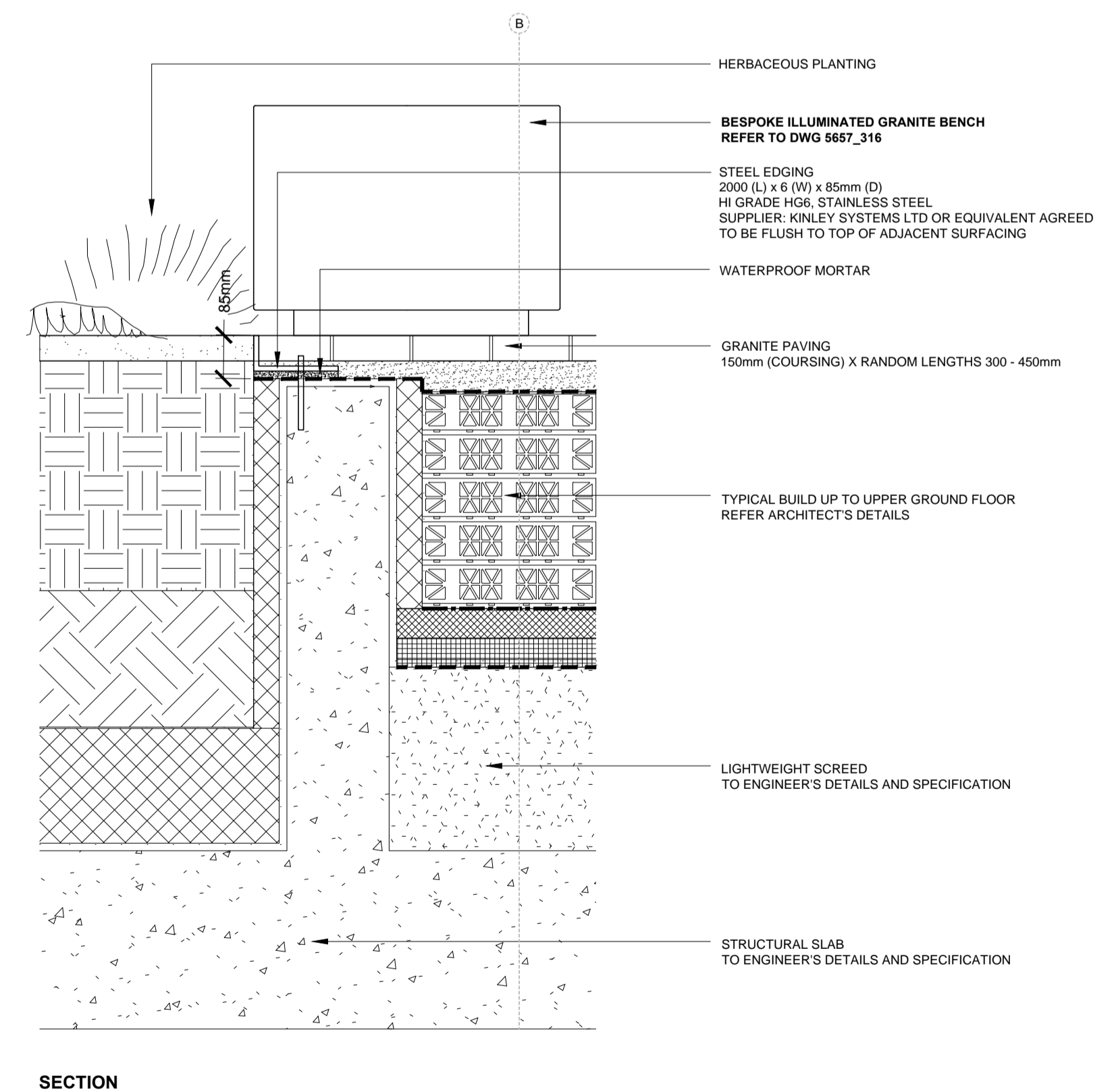




D05 TYPICAL PORCELAIN TILES TO COMMUNAL GARDENS
 SCALE 1 : 20



D06 TYPICAL STEEL EDGING
 SCALE 1 : 10



D07 STEEL EDGING TO UPPER GROUND PLANTING
 SCALE 1 : 10

LEGEND

1. This drawing is to be read in conjunction with all other drawings and specifications.
2. Do not scale off this drawing. Written dimensions to be taken only.
3. Any discrepancies found between this drawing and other drawings and specifications in the construction documents must be referred to the Landscape Architect prior to work commencing.
4. This drawing must not be copied in whole or in part without written consent of LDA design.
5. These drawings are for finishes only. All foundation, fixing, paving depths and drainage details to be provided by others.
6. All dimensions in mm unless otherwise stated.
7. Where dimension sizes of units are given they state length x width x depth.

NOTES:

REFER TO GENERAL ARRANGEMENT LAYOUT AND REFERENCE PLANS DWG 5657_100-104

REFER TO HARDWORKS LAYOUT AND REFERENCE PLANS DWG 5657_200

REFER TO FURNITURE LAYOUT AND REFERENCE PLANS DWG 5657_300

REFER TO SOFTWARES LAYOUT AND REFERENCE PLANS DWG 5657_400

TO BE READ IN CONJUNCTION WITH LANDSCAPE ARCHITECT'S EXTERNAL WORKS SPECIFICATION.

TO BE READ IN CONJUNCTION WITH ARCHITECT'S GA DRAWINGS 0010 SERIES

READ THIS FIRST

Note for Contractors
 This drawing should be considered along with the risk information contained in the CDM Pre Construction Information. This information will include details of the SIGNIFICANT risks which LDA Design has identified which may arise from constructing their designs shown on this drawing. A Competent Contractor should be aware of the typical risks associated with doing this work.

Note for Workers
 DO NOT START YOUR WORK unless you know the Risks and Controls relating to the work on this drawing (including SAFE SEQUENCES OF WORK and EQUIPMENT).

Do not issue copies of parts of this drawing without the above Note for Workers (unless you are sure that the Workers can undertake the work safely).

REV.	DESCRIPTION	APP.	DATE
C	Construction issue	AW	21/01/19
B	Update to steel edging	AW	06/10/17
A	Added Steel Edging to Upper Ground Planting	AW	11/09/17

LDA DESIGN

PROJECT TITLE
 101 Camley Street

DRAWING TITLE
 Stage 5: Construction
 Paving and Edging Details

ISSUED BY	Exeter	T: 01392 260430
DATE	Jan 2019	DRAWN AW
SCALE	As shown	CHECKED RAs
STATUS	Construction	APPROVED RAs

DWG. NO 5657_211

No dimensions are to be scaled from this drawing. All dimensions are to be checked on site. Area measurements for indicative purposes only.

© LDA Design Consulting LLP. Quality Assured to BS EN ISO 9001 : 2000

Sources Ordnance Survey