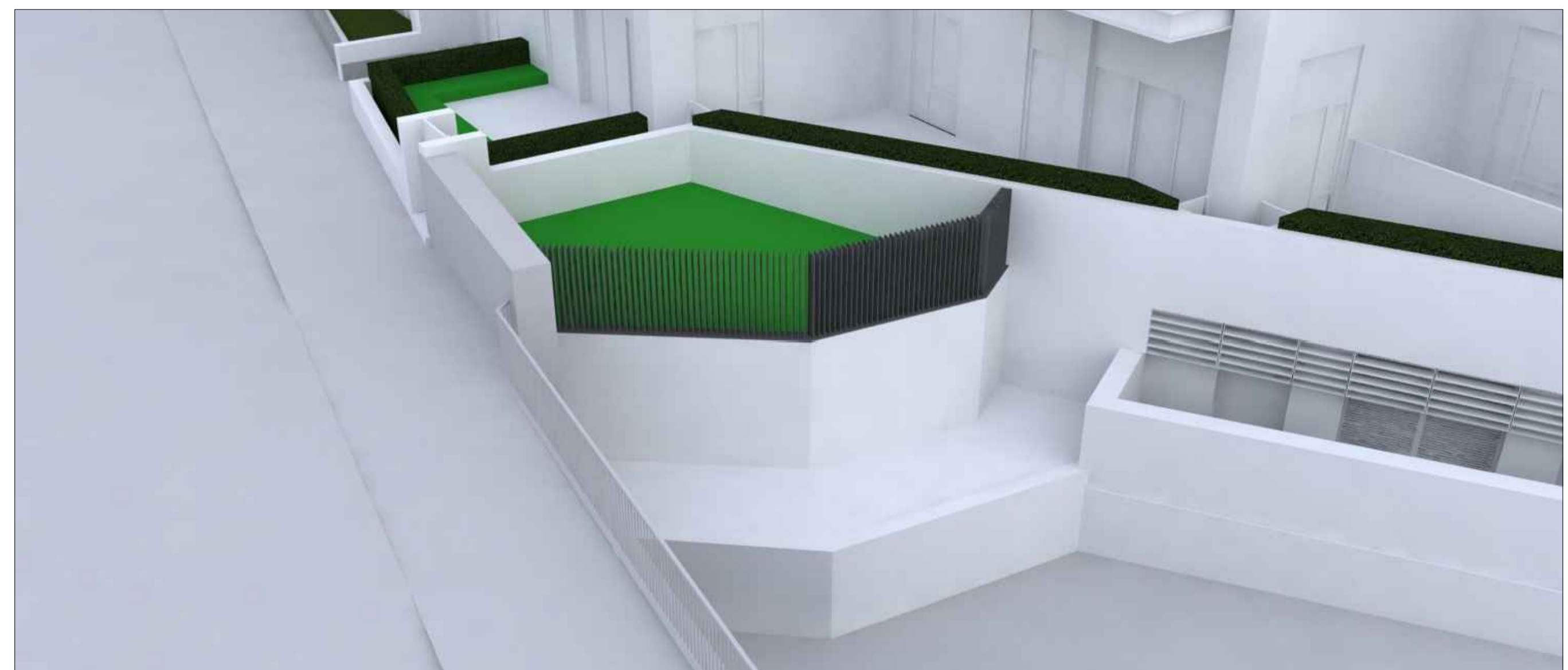
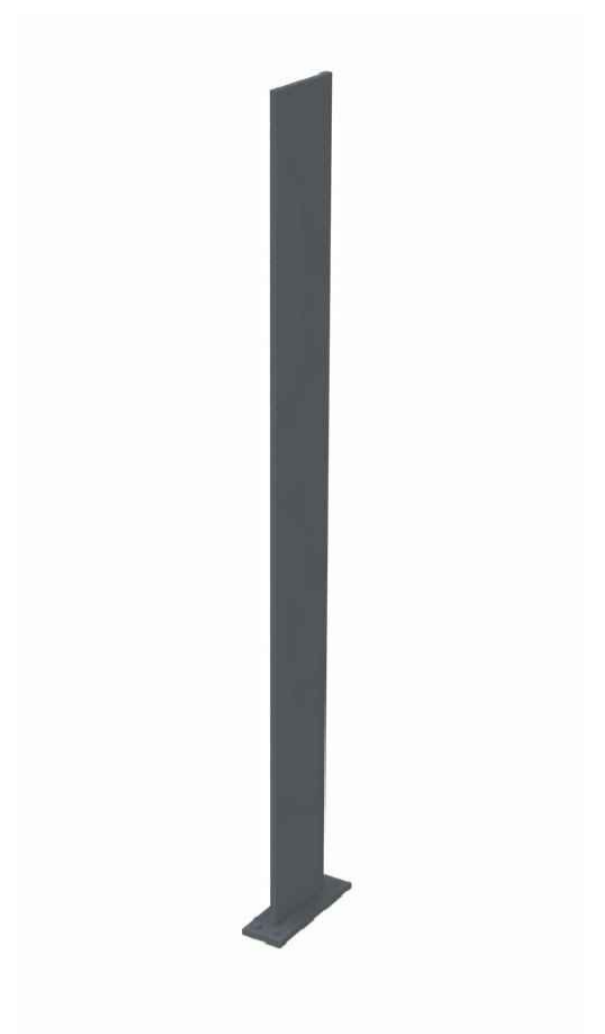


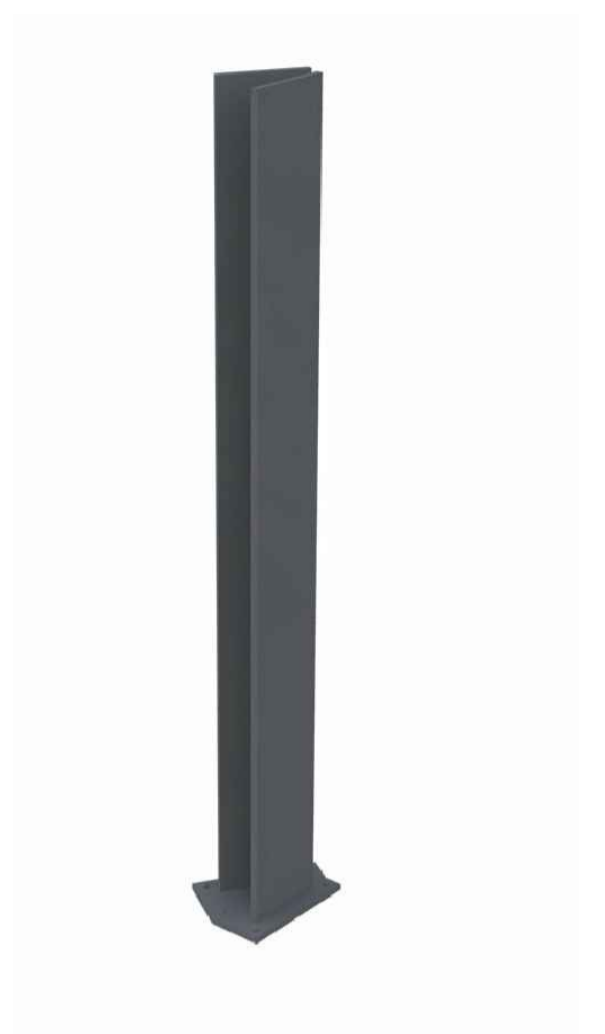
- LEGEND**
1. This drawing is to be read in conjunction with all other drawings and specifications.
 2. Do not scale off this drawing. Written dimensions to be taken only.
 3. Any discrepancies found between this drawing and other drawings and specifications in the construction documents must be referred to the Landscape Architect prior to work commencing.
 4. This drawing must not be copied in whole or in part without written consent of LDA design.
 5. These drawings are for finishes only. All foundation, fixing, paving depths and drainage details to be provided by others.
 6. All dimensions in mm unless otherwise stated.
 7. Where dimension sizes of units are given they state length x width x depth.



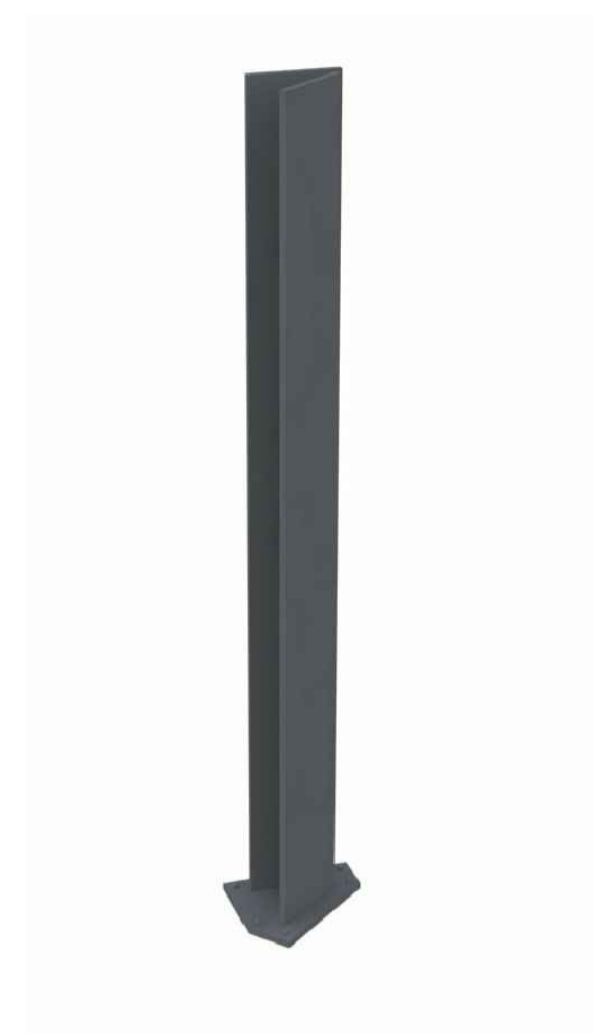
ILLUSTRATIVE VIEW OF 1880mm HIGH FENCE TO CANAL BOUNDARY WALL



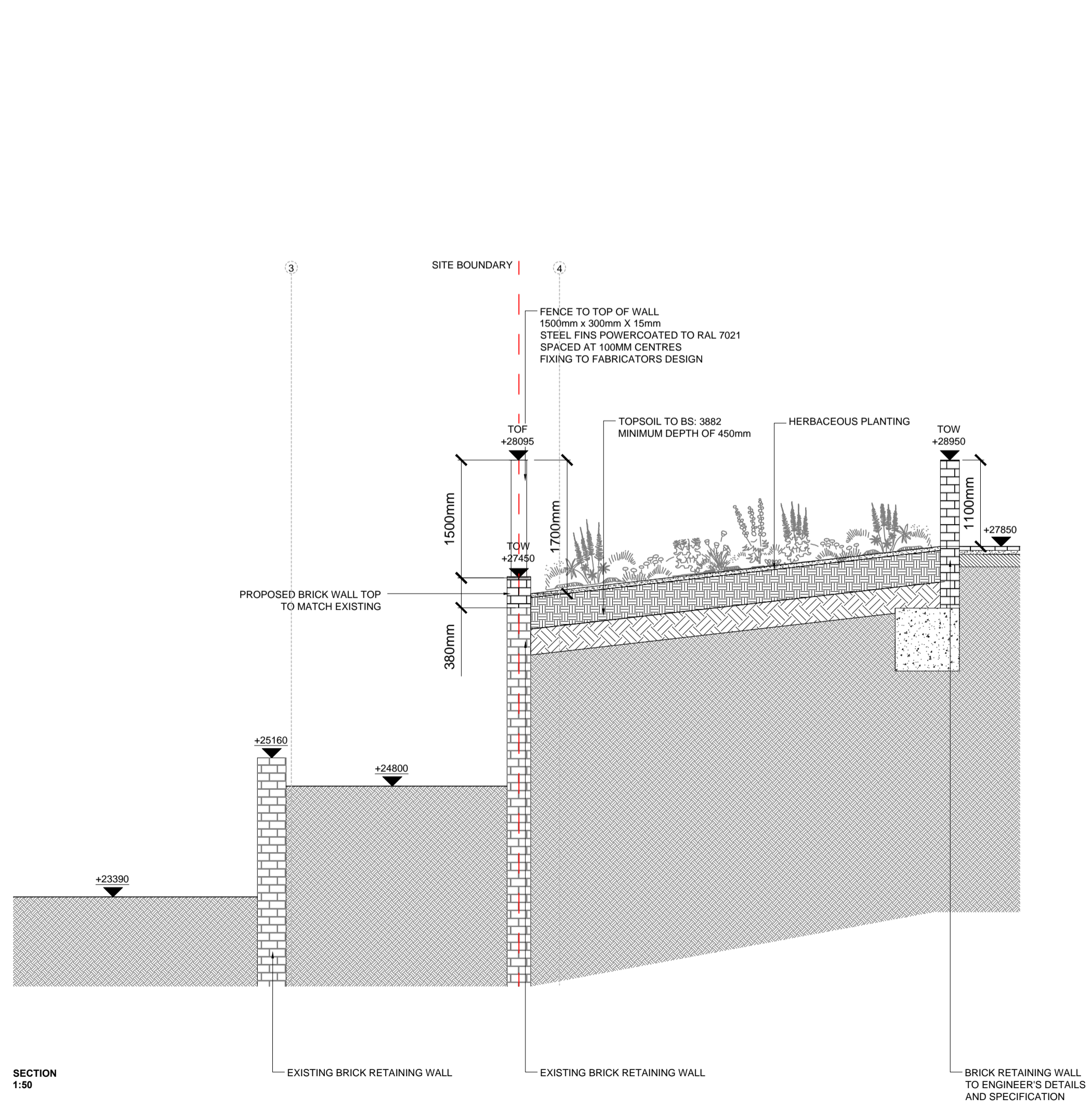
ILLUSTRATIVE VIEW OF TYPICAL FENCE FIN



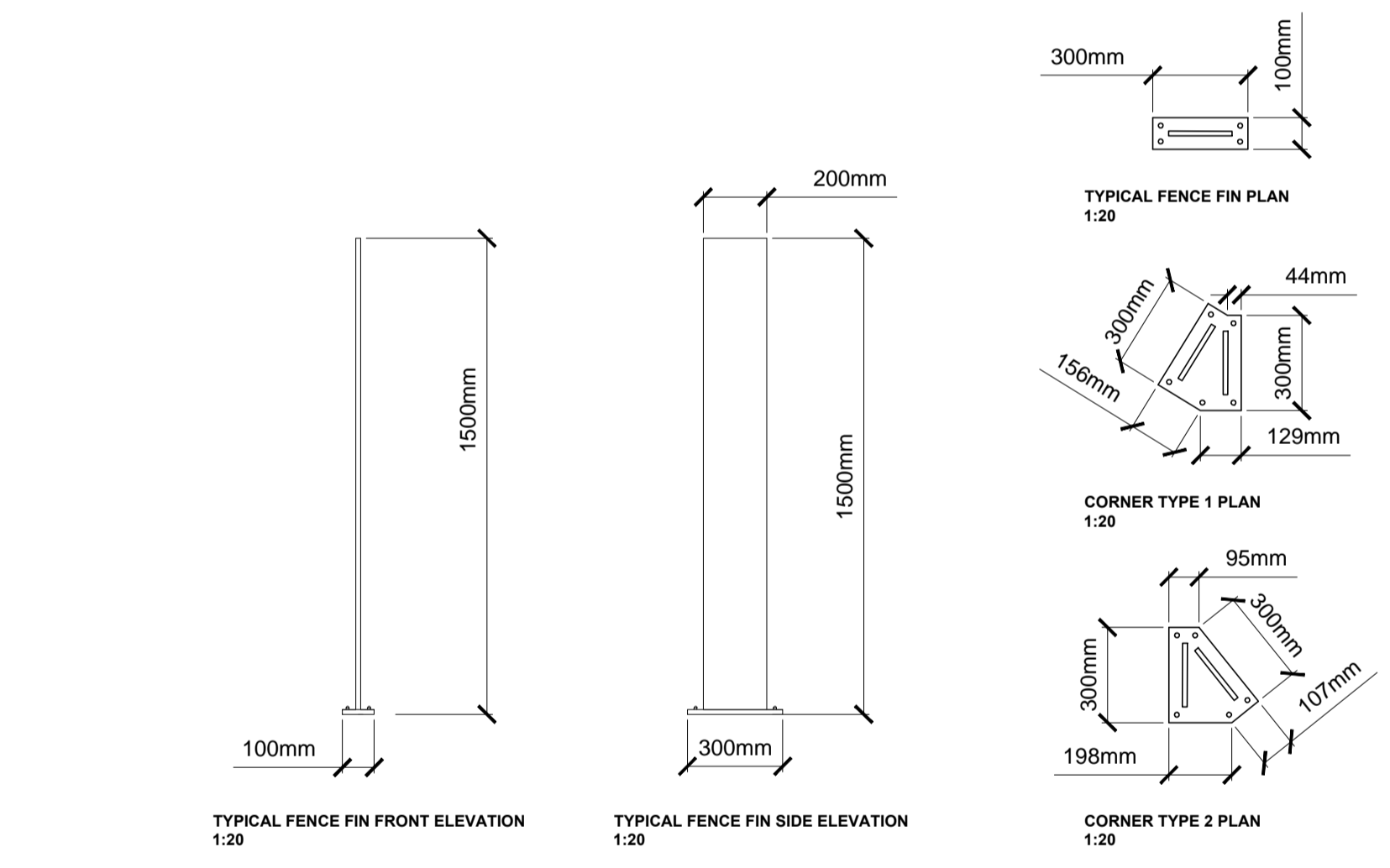
ILLUSTRATIVE VIEW OF FENCE FIN CORNER TYPE 1



ILLUSTRATIVE VIEW OF FENCE FIN CORNER TYPE 2



SECTION 1:50



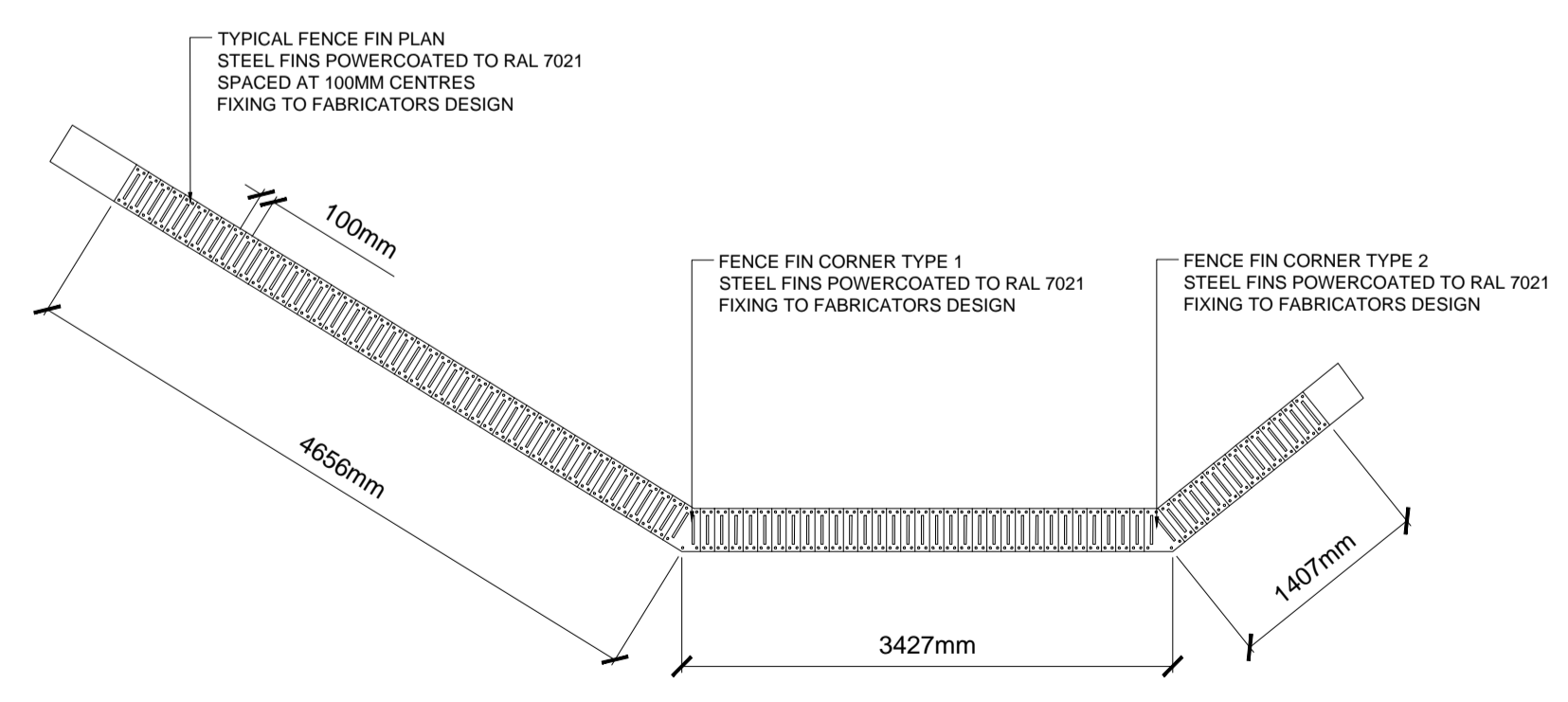
TYPICAL FENCE FIN FRONT ELEVATION 1:20

TYPICAL FENCE FIN SIDE ELEVATION 1:20

TYPICAL FENCE FIN PLAN 1:20

CORNER TYPE 1 PLAN 1:20

CORNER TYPE 2 PLAN 1:20



PLAN 1:50

- READ THIS FIRST**
- Note for Contractors**
This drawing should be considered along with the risk information contained in the CDM Pre Construction Information. This information will include details of the SIGNIFICANT risks which LDA Design has identified which may arise from constructing their designs shown on this drawing. A Competent Contractor should be aware of the typical risks associated with doing this work.
 - Note for Workers**
DO NOT START YOUR WORK unless you know the Risks and Controls relating to the work on this drawing (including SAFE SEQUENCES OF WORK and EQUIPMENT).
 - Do not issue copies of parts of this drawing without the above Note for Workers (unless you are sure that the Workers can undertake the work safely).

REV.	DESCRIPTION	DATE
B	Construction issue	AW 21/01/19
A	Canal side wall updated	AW 30/11/17

LDA DESIGN

PROJECT TITLE
101 Camley Street

DRAWING TITLE
Stage 5: Construction
Fence to Boundary Wall

ISSUED BY	Exeter	T: 01392 260 430
DATE	Jan 2019	DRAWN AW
SCALE	As shown	CHECKED RAs
STATUS	Construction	APPROVED RAs

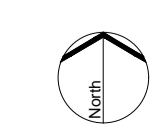
DWG. NO 5657_338

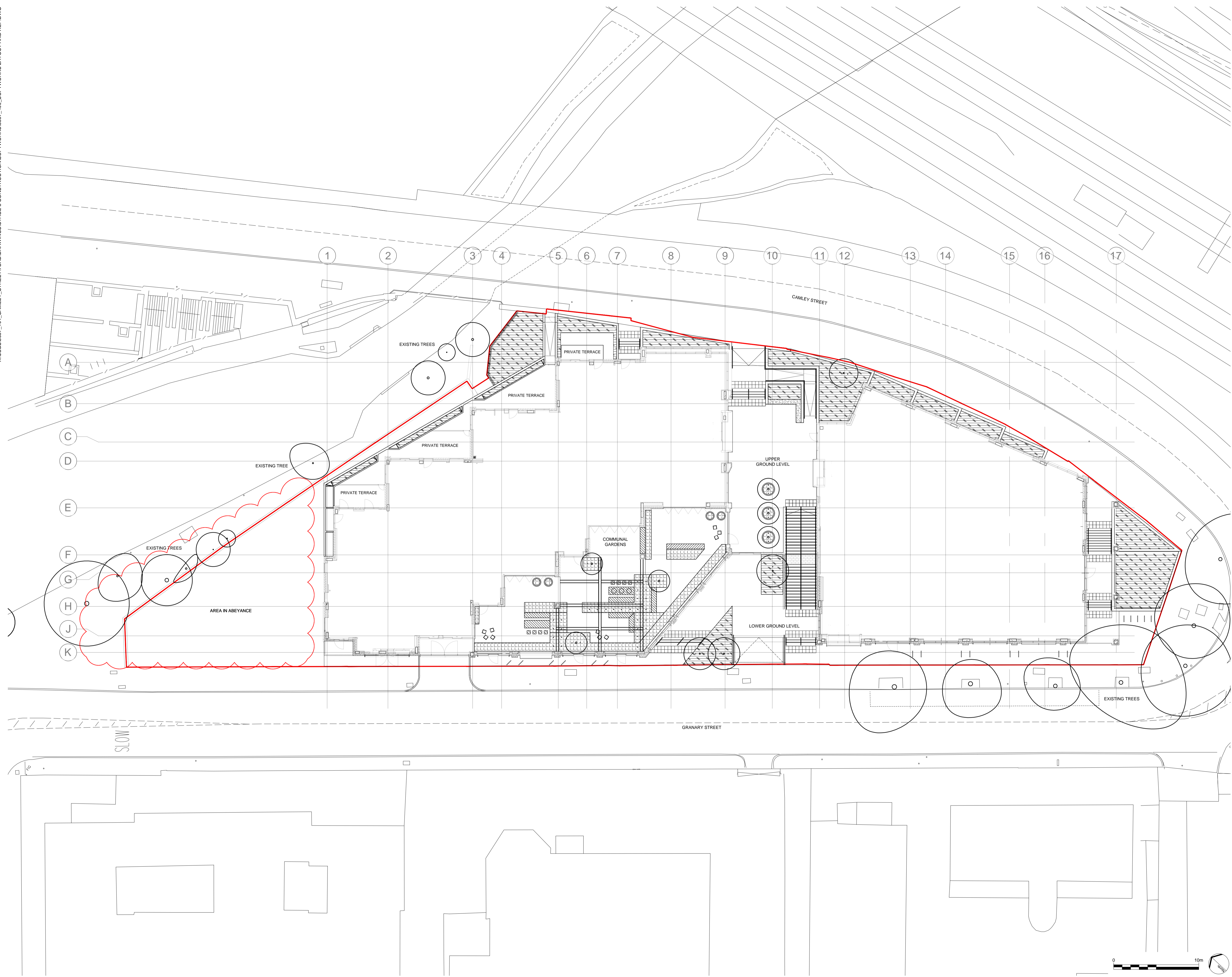
No dimensions are to be scaled from this drawing. All dimensions are to be checked on site. Area measurements for indicative purposes only.

© LDA Design Consulting Ltd. Quality Assured to BS EN ISO 9001 : 2008
Sources Ordnance Survey

D67 FENCE TO BOUNDARY WALL
SCALE 1 : 50

Scale as shown





- LEGEND**
1. This drawing is to be read in conjunction with all other drawings and specifications.
 2. Do not scale off this drawing. Written dimensions to be taken only.
 3. Any discrepancies found between this drawing and other drawings and specifications in the construction documents must be referred to the Landscape Architect prior to work commencing.
 4. This drawing must not be copied in whole or in part without written consent of LDA design.
 5. These drawings are for finishes only. All foundation, fixing, paving depths and drainage details to be provided by others.
 6. All dimensions in mm unless otherwise stated.
 7. Where dimension sizes of units are given they state length x width x depth.

NOTES:

REFER TO GENERAL ARRANGEMENT LAYOUT AND REFERENCE PLANS DWG 5657_100 - 104

REFER TO HARDWORKS LAYOUT AND REFERENCE PLAN DWG 5657_200

REFER TO FURNITURE LAYOUT AND REFERENCE PLAN DWG 5657_300

REFER TO SOFTWORKS LAYOUT AND REFERENCE PLAN DWG 5657_400

TO BE READ IN CONJUNCTION WITH LANDSCAPE ARCHITECT'S EXTERNAL WORKS SPECIFICATION

TO BE READ IN CONJUNCTION WITH ARCHITECT'S GA DRAWINGS 0010 SERIES

CONTRACTOR TO ENSURE THAT ALL PLANTING AREAS ARE FREE DRAINING

- SITE BOUNDARY
- COMMUNAL GARDENS PLANTING
50mm DEPTH DECORATIVE BARK MULCH
400mm MIN DEPTH TOPSOIL TO BS:3882
- WOODLAND EDGE PLANTING
50mm DEPTH DECORATIVE BARK MULCH
400mm MIN DEPTH TOPSOIL TO BS:3882
- PROPOSED TREES
50mm DEPTH DECORATIVE BARK MULCH
800mm MIN DEPTH TOPSOIL TO BS:3882

- READ THIS FIRST**
- Note for Contractors**
This drawing should be considered along with the risk information contained in the CDM Pre Construction Information. This information will include details of the SIGNIFICANT risks which LDA Design has identified which may arise from constructing their designs shown on this drawing. A Competent Contractor should be aware of the typical risks associated with doing this work.
 - Note for Workers**
DO NOT START YOUR WORK unless you know the Risks and Controls relating to the work on this drawing (including SAFE SEQUENCES OF WORK and EQUIPMENT).
 - Do not issue copies of parts of this drawing without the above Note for Workers (unless you are sure that the Workers can undertake the work safely).

REV.	DESCRIPTION	APP. DATE
A	Construction Issue	AW 21/01/19

LDA DESIGN

PROJECT TITLE
101 Camley Street

DRAWING TITLE
Stage 5: Construction
Softworks and Topsoil Layout and Reference Plan

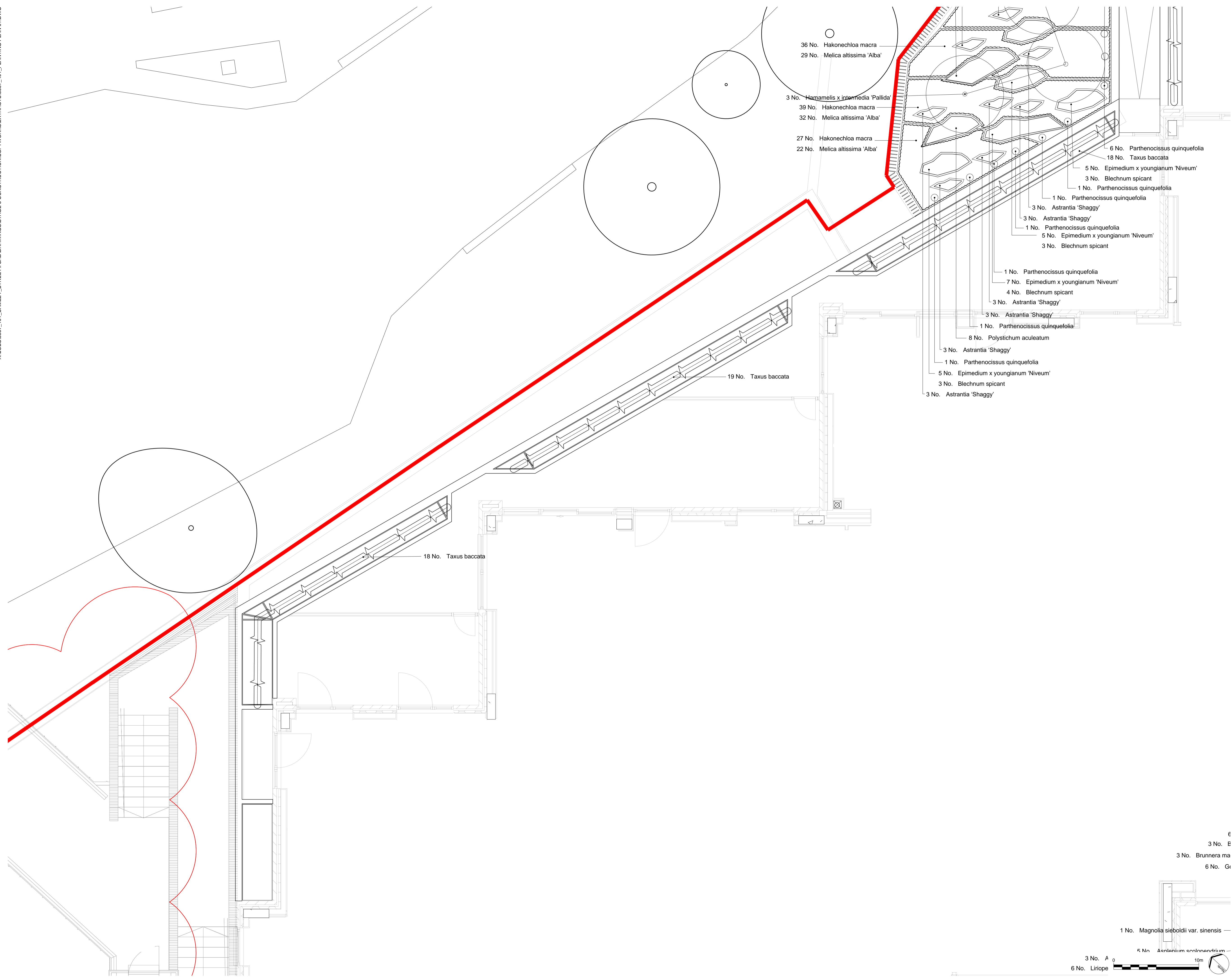
ISSUED BY	Exeter	T: 01392 260 430
DATE	Jan 2019	DRAWN MC
SCALE/A1	1:200	CHECKED A/W
STATUS	Construction	APPROVED RAs

DWG. NO 5657_400

No dimensions are to be scaled from this drawing. All dimensions are to be checked on site. Area measurements for indicative purposes only.

© LDA Design Consulting Ltd. Quality Assured to BS EN ISO 9001 : 2008
Sources: Ordnance Survey





LEGEND

1. This drawing is to be read in conjunction with all other drawings and specifications.
2. Do not scale off this drawing. Written dimensions to be taken only.
3. Any discrepancies found between this drawing and other drawings and specifications in the construction documents must be referred to the Landscape Architect prior to work commencing.
4. This drawing must not be copied in whole or in part without written consent of LDA design.
5. These drawings are for finishes only. All foundation, fixing, paving depths and drainage details to be provided by others.
6. All dimensions in mm unless otherwise stated.
7. Where dimension sizes of units are given they state length x width x depth.

NOTES:

REFER TO GENERAL ARRANGEMENT LAYOUT AND REFERENCE PLANS DWG 657_100 - 104

REFER TO HARDWORKS LAYOUT AND REFERENCE PLAN DWG 657_200

REFER TO FURNITURE LAYOUT AND REFERENCE PLAN DWG 657_300

REFER TO SOFTWARE LAYOUT AND REFERENCE PLAN DWG 657_400

TO BE READ IN CONJUNCTION WITH LANDSCAPE ARCHITECT'S EXTERNAL WORKS SPECIFICATION.

TO BE READ IN CONJUNCTION WITH ARCHITECT'S GA DRAWINGS 0010 SERIES

— SITE BOUNDARY

○ PROPOSED TREES

READ THIS FIRST

Note for Contractors
 This drawing should be considered along with the risk information contained in the CDM Pre Construction Information. This information will include details of the SIGNIFICANT risks which LDA Design has identified which may arise from constructing their designs shown on this drawing. A Competent Contractor should be aware of the typical risks associated with doing this work.

Note for Workers
 DO NOT START YOUR WORK unless you know the Risks and Controls relating to the work on this drawing (including SAFE SEQUENCES OF WORK and EQUIPMENT).

Do not issue copies of parts of this drawing without the above Note for Workers (unless you are sure that the Workers can undertake the work safely).

REV.	DESCRIPTION	APP.	DATE
A	Construction Issue	AW	21/01/19

LDA DESIGN

PROJECT TITLE
 101 Camley Street

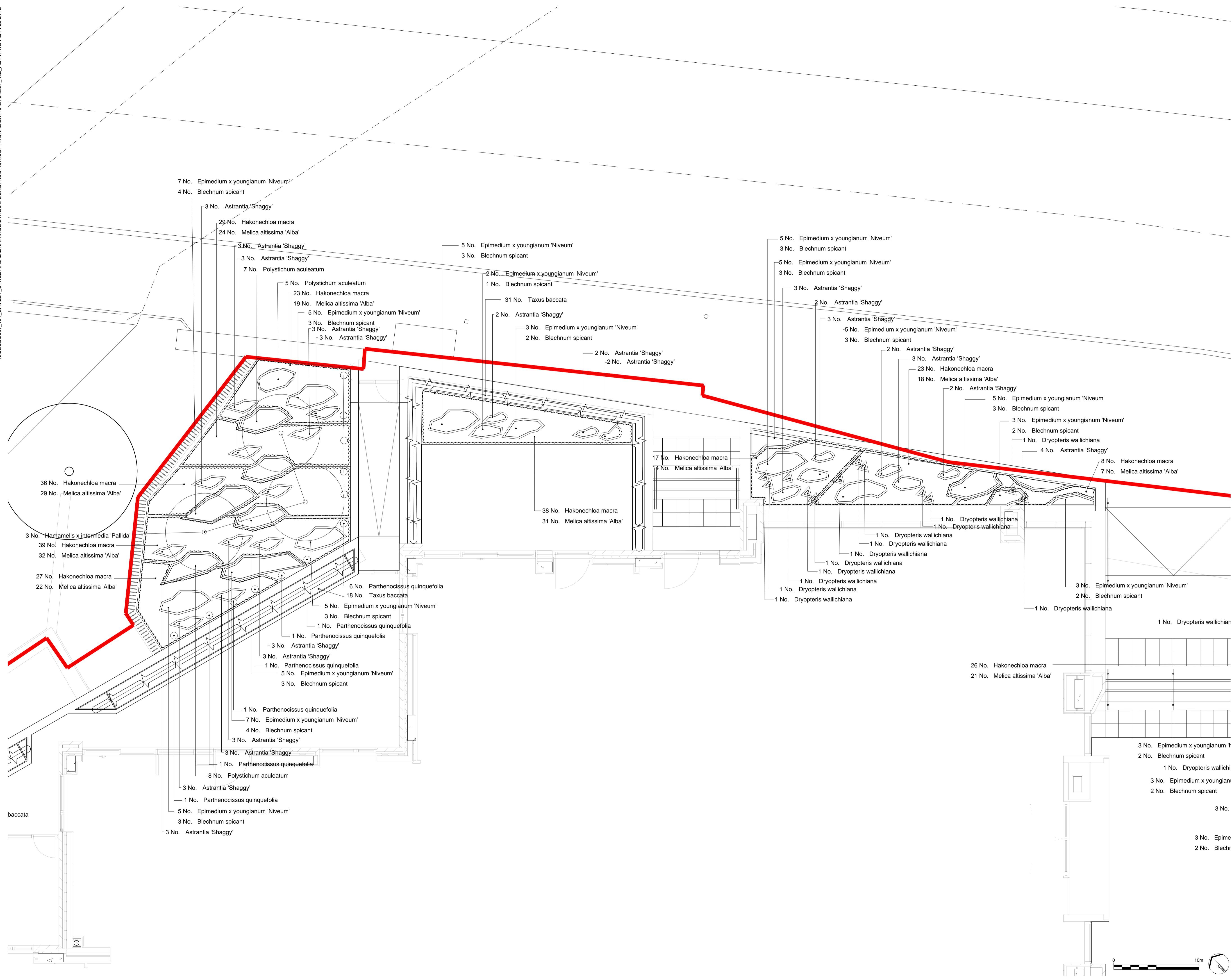
DRAWING TITLE
 Stage 5: Construction
 Planting Plan
 Sheet 01

ISSUED BY: Exeter T: 01392 260 430
 DATE: Jan 2019 DRAWN: MC
 SCALE: A1 1:200 CHECKED: AW
 STATUS: Construction APPROVED: RAS

DWG. NO 5657_401

No dimensions are to be scaled from this drawing. All dimensions are to be checked on site. Area measurements for indicative purposes only.

© LDA Design Consulting Ltd. Quality Assured to BS EN ISO 9001:2008
 Sources: Ordnance Survey



LEGEND

1. This drawing is to be read in conjunction with all other drawings and specifications.
2. Do not scale off this drawing. Written dimensions to be taken only.
3. Any discrepancies found between this drawing and other drawings and specifications in the construction documents must be referred to the Landscape Architect prior to work commencing.
4. This drawing must not be copied in whole or in part without written consent of LDA design.
5. These drawings are for finishes only. All foundation, fixing, paving depths and drainage details to be provided by others.
6. All dimensions in mm unless otherwise stated.
7. Where dimension sizes of units are given they state length x width x depth.

NOTES

REFER TO GENERAL ARRANGEMENT LAYOUT AND REFERENCE PLANS DWG 657_100 - 104

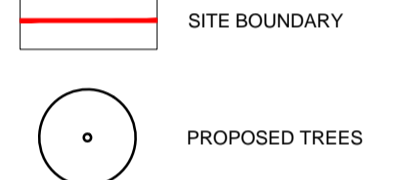
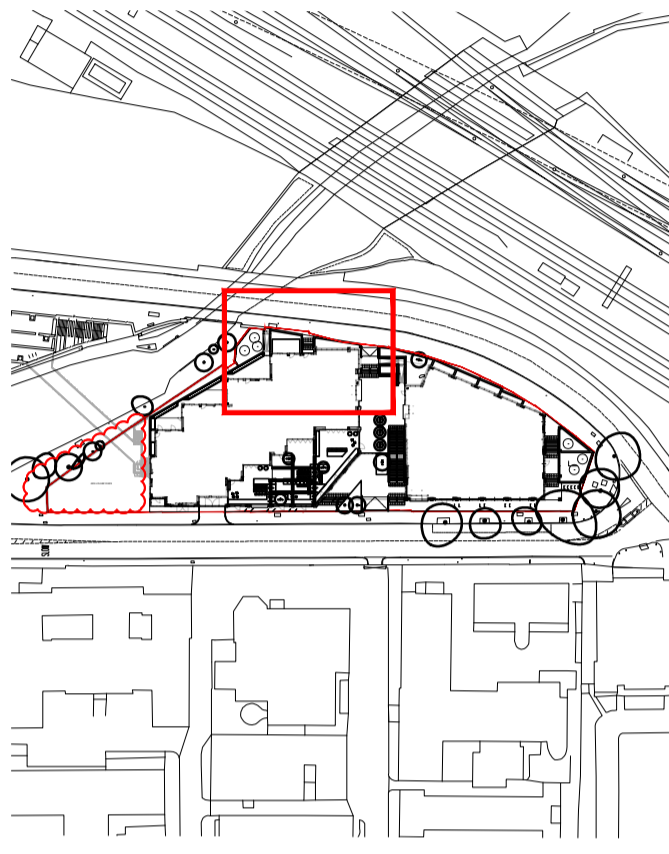
REFER TO HARDWORKS LAYOUT AND REFERENCE PLAN DWG 657_200

REFER TO FURNITURE LAYOUT AND REFERENCE PLAN DWG 657_300

REFER TO SOFTWARE LAYOUT AND REFERENCE PLAN DWG 657_400

TO BE READ IN CONJUNCTION WITH LANDSCAPE ARCHITECT'S EXTERNAL WORKS SPECIFICATION

TO BE READ IN CONJUNCTION WITH ARCHITECT'S GA DRAWINGS 0010 SERIES



READ THIS FIRST

- Note for Contractors**
This drawing should be considered along with the risk information contained in the CDM Pre Construction Information. This information will include details of the SIGNIFICANT risks which LDA Design has identified which may arise from constructing their designs shown on this drawing. A Competent Contractor should be aware of the typical risks associated with doing this work.
- Note for Workers**
DO NOT START YOUR WORK unless you know the Risks and Controls relating to the work on this drawing (including SAFE SEQUENCES OF WORK and EQUIPMENT).
- Do not issue copies of parts of this drawing without the above Note for Workers (unless you are sure that the Workers can undertake the work safely).

REV.	DESCRIPTION	DATE	APP. DATE
A	Construction Issue		AW 21/01/19

LD A DESIGN

PROJECT TITLE
101 Camley Street

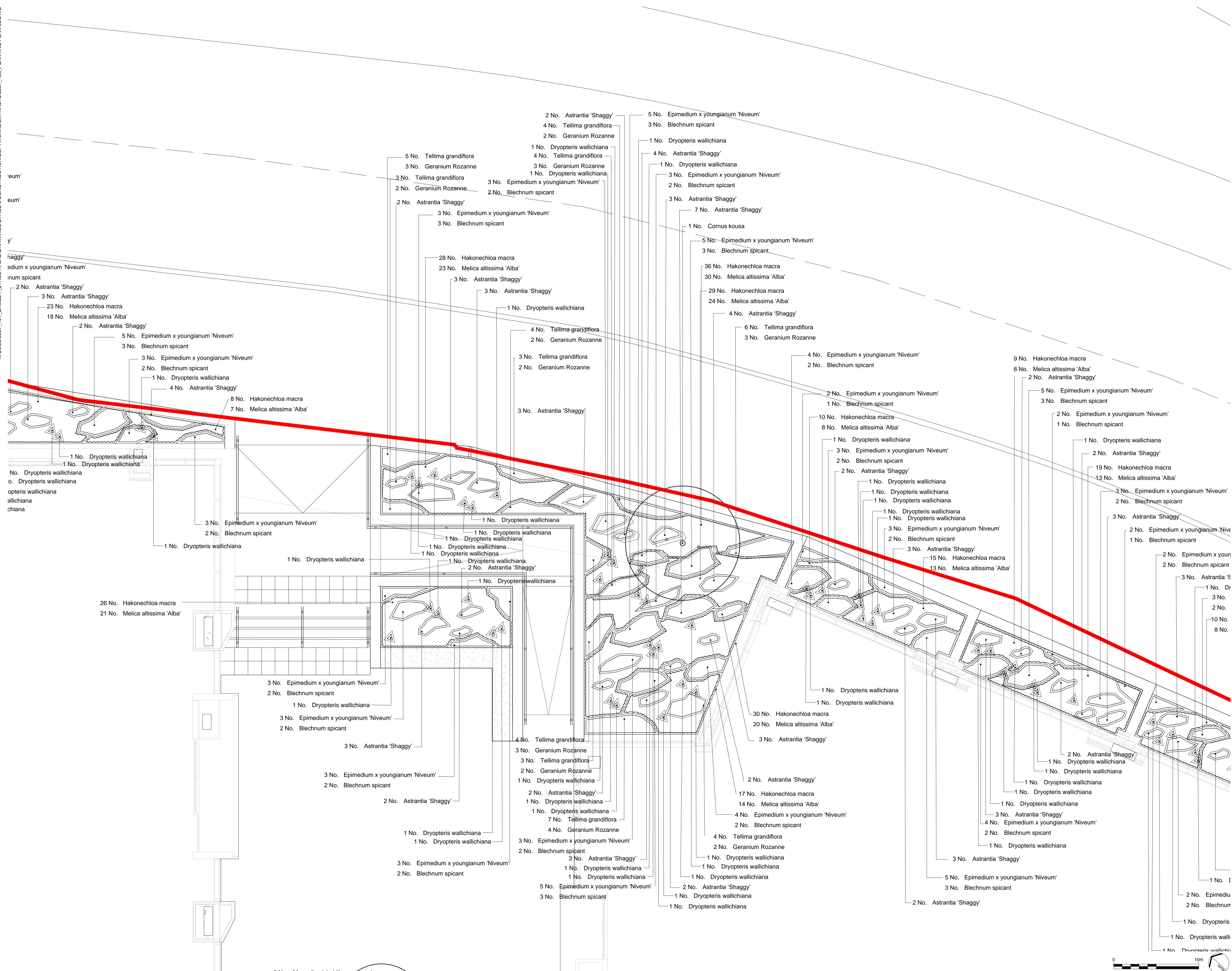
DRAWING TITLE
Stage 5: Construction
Planting Plan
Sheet 02

ISSUED BY: Exeter T: 01392 260 430
DATE: Jan 2019 DRAWN: MC
SCALE: A1 1:200 CHECKED: AW
STATUS: Construction APPROVED: RAS

DWG. NO 5657_402

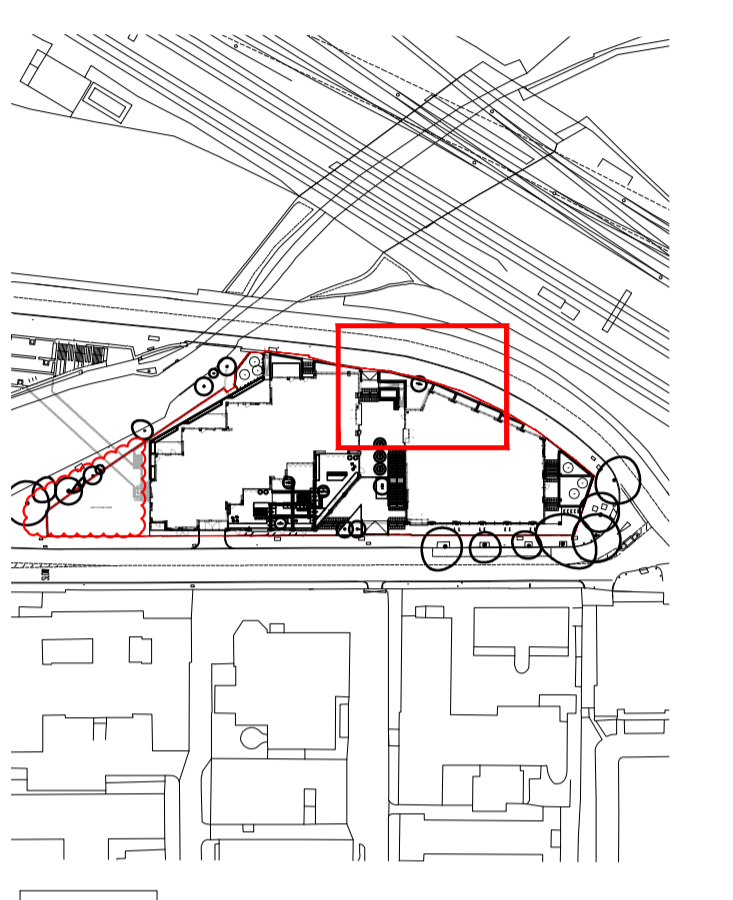
No dimensions are to be scaled from this drawing. All dimensions are to be checked on site. Area measurements for indicative purposes only.

© LDA Design Consulting Ltd. Quality Assured to BS EN ISO 9001 : 2008
Sources: Ordnance Survey



- LEGEND
1. This drawing is to be read in conjunction with all other drawings and specifications.
 2. Do not scale off this drawing. Written dimensions to be taken only.
 3. Any discrepancies found between this drawing and other drawings and specifications in the construction documents must be referred to the Landscape Architect prior to work commencing.
 4. This drawing must not be copied in whole or in part without written consent of LDA design.
 5. These drawings are for finishes only. All foundation, fixing, paving depths and drainage details to be provided by others.
 6. All dimensions in mm unless otherwise stated.
 7. Where dimension sizes of units are given they state length x width x depth.

- NOTES:
- REFER TO GENERAL ARRANGEMENT LAYOUT AND REFERENCE PLANS DWG 6567_100 - 104
 - REFER TO HARDWORKS LAYOUT AND REFERENCE PLAN DWG 6567_200
 - REFER TO FURNITURE LAYOUT AND REFERENCE PLAN DWG 6567_400
 - REFER TO SOFTWARE LAYOUT AND REFERENCE PLAN DWG 6567_500
 - TO BE READ IN CONJUNCTION WITH LANDSCAPE ARCHITECT'S EXTERNAL WORKS SPECIFICATION.
 - TO BE READ IN CONJUNCTION WITH ARCHITECT'S GA DRAWINGS 0010 SERIES



- SITE BOUNDARY
- PROPOSED TREES

- READ THIS FIRST**
- Note for Contractors**
This drawing should be considered along with the risk information contained in the CDM Pre Construction Information. This information will include details of the SIGNIFICANT risks which LDA Design has identified which may arise from constructing their designs shown on this drawing. A Competent Contractor should be aware of the typical risks associated with doing this work.
 - Note for Workers**
DO NOT START YOUR WORK unless you know the Risks and Controls relating to the work on this drawing (including SAFE SEQUENCES OF WORK and EQUIPMENT).
 - Do not issue copies of parts of this drawing without the above Note for Workers (unless you are sure that the Workers can undertake the work safely).

REV.	DESCRIPTION	DATE	APP. DATE
A	Construction Issue		AW 21/01/19

LDA DESIGN

PROJECT TITLE
101 Camley Street

DRAWING TITLE
Stage 5: Construction
Planting Plan
Sheet 03

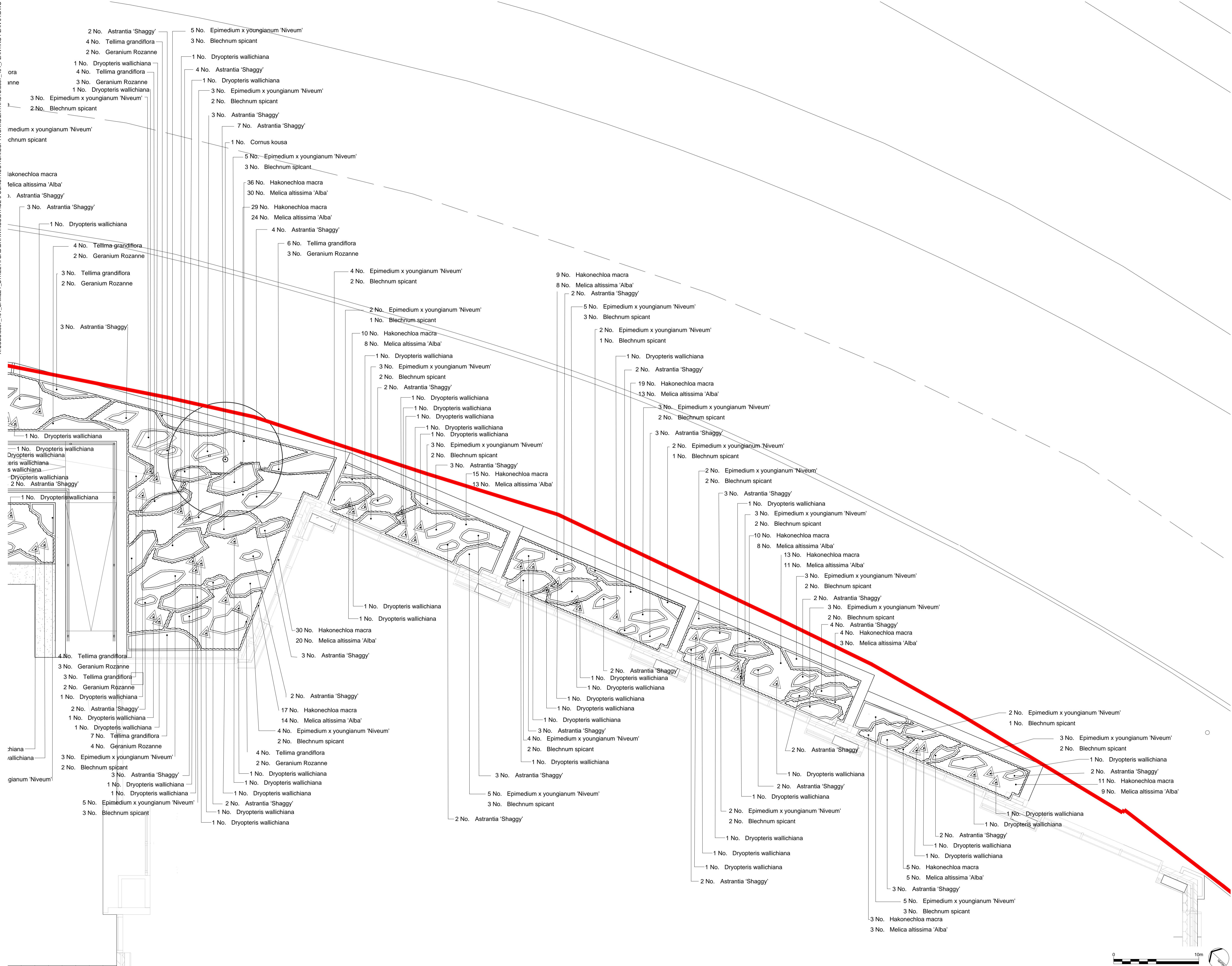
ISSUED BY	Exeter	T: 01392 260 430	
DATE	Jan 2019	DRAWN	MC
SCALE	1:200	CHECKED	AW
STATUS	Construction	APPROVED	RA

DWG. NO 5657_403

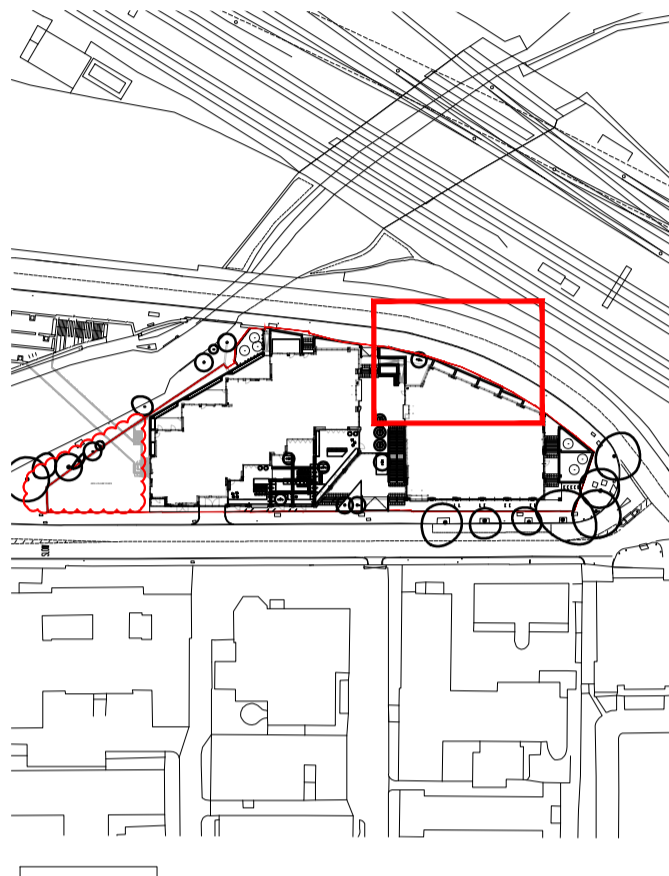
No dimensions are to be scaled from this drawing. All dimensions are to be checked on site. Area measurements for indicative purposes only.

© LDA Design Consulting Ltd. Quality Assured to BS EN ISO 9001:2008
Sources: Ordnance Survey

X:\JOBS\657_101_CAMLEY_STREET\CADD\DRAWINGS\STAGE 5 CONSTRUCTION\SOFTWARE\EXTRACTS\657_404_PLANTING PLAN 04.DWG



- LEGEND**
1. This drawing is to be read in conjunction with all other drawings and specifications.
 2. Do not scale off this drawing. Written dimensions to be taken only.
 3. Any discrepancies found between this drawing and other drawings and specifications in the construction documents must be referred to the Landscape Architect prior to work commencing.
 4. This drawing must not be copied in whole or in part without written consent of LDA design.
 5. These drawings are for finishes only. All foundation, fixing, paving depths and drainage details to be provided by others.
 6. All dimensions in mm unless otherwise stated.
 7. Where dimension sizes of units are given they state length x width x depth.
- NOTES:**
- REFER TO GENERAL ARRANGEMENT LAYOUT AND REFERENCE PLANS DWG 657_100 - 104
 - REFER TO HARDWORKS LAYOUT AND REFERENCE PLAN DWG 657_200
 - REFER TO FURNITURE LAYOUT AND REFERENCE PLAN DWG 657_300
 - REFER TO SOFTWARE LAYOUT AND REFERENCE PLAN DWG 657_400
 - TO BE READ IN CONJUNCTION WITH LANDSCAPE ARCHITECT'S EXTERNAL WORK SPECIFICATION
 - TO BE READ IN CONJUNCTION WITH ARCHITECT'S GA DRAWINGS 0010 SERIES



- SITE BOUNDARY
- PROPOSED TREES

READ THIS FIRST

- Note for Contractors**
This drawing should be considered along with the risk information contained in the CDM Pre Construction Information. This information will include details of the SIGNIFICANT risks which LDA Design has identified which may arise from constructing their designs shown on this drawing. A Competent Contractor should be aware of the typical risks associated with doing this work.
- Note for Workers**
DO NOT START YOUR WORK unless you know the Risks and Controls relating to the work on this drawing (including SAFE SEQUENCES OF WORK and EQUIPMENT).
- Do not issue copies of parts of this drawing without the above Note for Workers (unless you are sure that the Workers can undertake the work safely).

REV.	DESCRIPTION	AW DATE
A	Construction Issue	21/01/19

LDA DESIGN

PROJECT TITLE
101 Canley Street

DRAWING TITLE
Stage 5: Construction
Planting Plan
Sheet 04

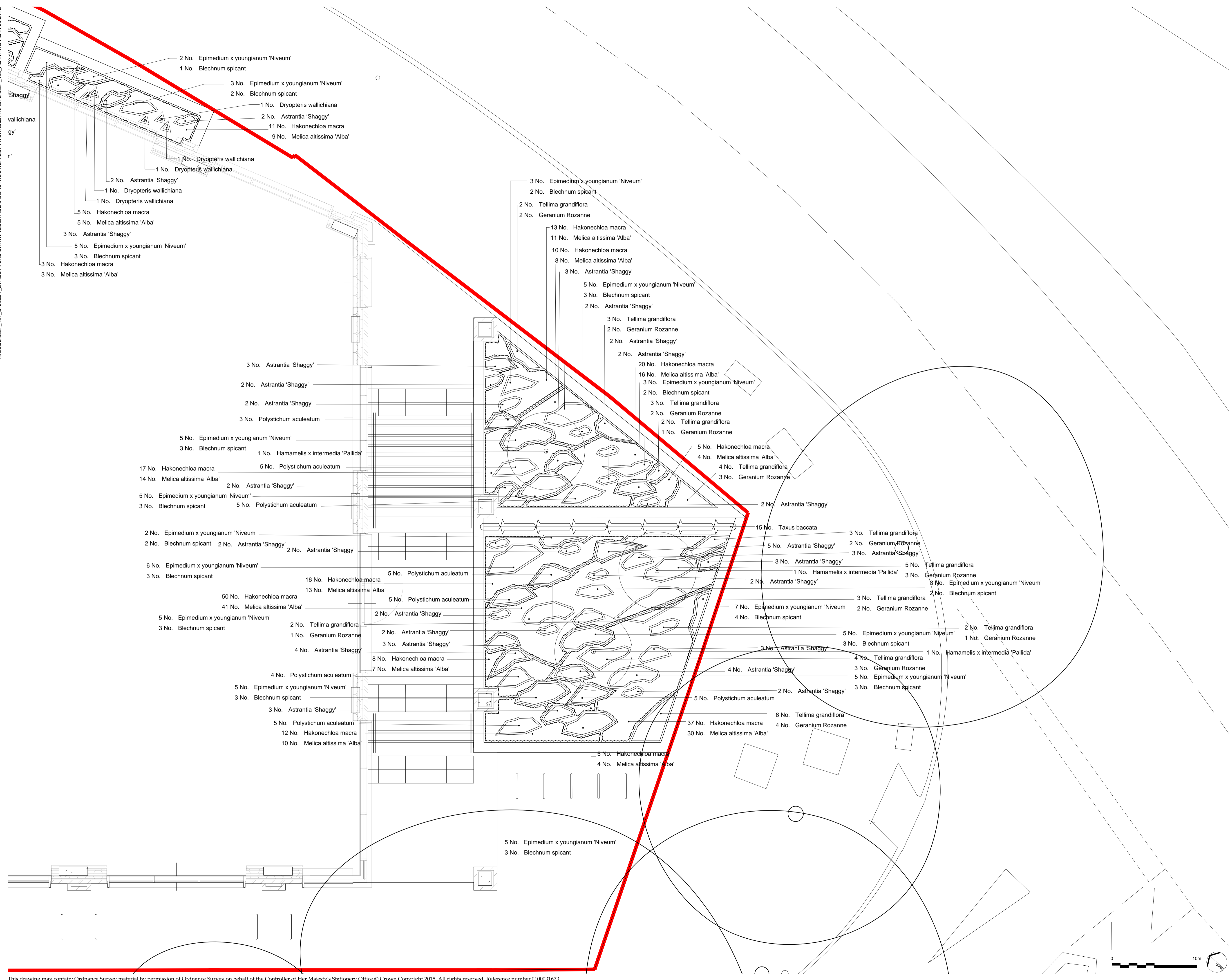
ISSUED BY	Exeter	T: 01392 260 430
DATE	Jan 2019	DRAWN MC
SCALE	1:200	CHECKED AW
STATUS	Construction	APPROVED RAS

DWG. NO 5657_404

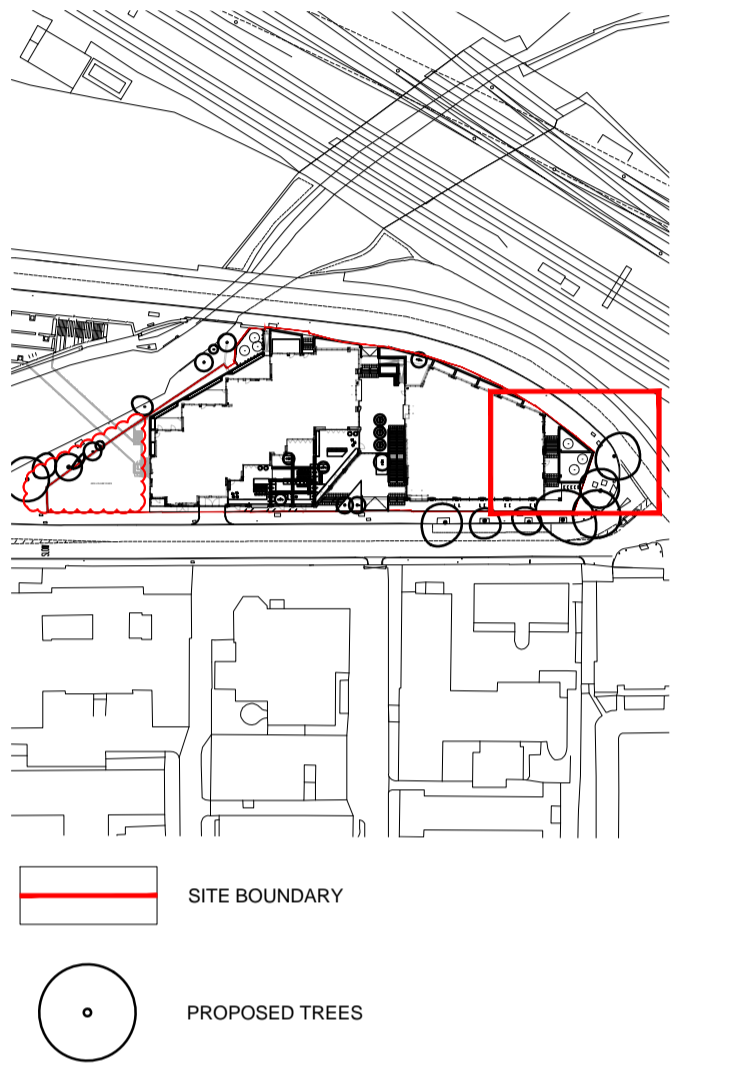
No dimensions are to be scaled from this drawing. All dimensions are to be checked on site. Area measurements for indicative purposes only.

© LDA Design Consulting Ltd. Quality Assured to BS EN ISO 9001 : 2008
Sources: Ordnance Survey

X:\JOBS\657_101_CAMLEY_STREET\CADD\DRAWINGS\STAGE 5 CONSTRUCTION\SOFTWORKS\EXTRACTS\657_405_PLANTING PLAN 05.DWG



- LEGEND**
1. This drawing is to be read in conjunction with all other drawings and specifications.
 2. Do not scale off this drawing. Written dimensions to be taken only.
 3. Any discrepancies found between this drawing and other drawings and specifications in the construction documents must be referred to the Landscape Architect prior to work commencing.
 4. This drawing must not be copied in whole or in part without written consent of LDA design.
 5. These drawings are for finishes only. All foundation, fixing, paving depths and drainage details to be provided by others.
 6. All dimensions in mm unless otherwise stated.
 7. Where dimension sizes of units are given they state length x width x depth.
- NOTES:**
- REFER TO GENERAL ARRANGEMENT LAYOUT AND REFERENCE PLANS DWG 657_100 - 104
- REFER TO HARDWORKS LAYOUT AND REFERENCE PLAN DWG 657_200
- REFER TO FURNITURE LAYOUT AND REFERENCE PLAN DWG 657_400
- REFER TO SOFTWORKS LAYOUT AND REFERENCE PLAN DWG 657_300
- TO BE READ IN CONJUNCTION WITH LANDSCAPE ARCHITECT'S EXTERNAL WORKS SPECIFICATION
- TO BE READ IN CONJUNCTION WITH ARCHITECT'S GA DRAWINGS 0010 SERIES



- READ THIS FIRST**
- Note for Contractors**
This drawing should be considered along with the risk information contained in the CDM Pre Construction Information. This information will include details of the SIGNIFICANT risks which LDA Design has identified which may arise from constructing their designs shown on this drawing. A Competent Contractor should be aware of the typical risks associated with doing this work.
 - Note for Workers**
DO NOT START YOUR WORK unless you know the Risks and Controls relating to the work on this drawing (including SAFE SEQUENCES OF WORK and EQUIPMENT).
 - Do not issue copies of parts of this drawing without the above Note for Workers (unless you are sure that the Workers can undertake the work safely).

REV.	DESCRIPTION	AW DATE
A	Construction Issue	AW 21/01/19

LDA DESIGN

PROJECT TITLE
101 Camley Street

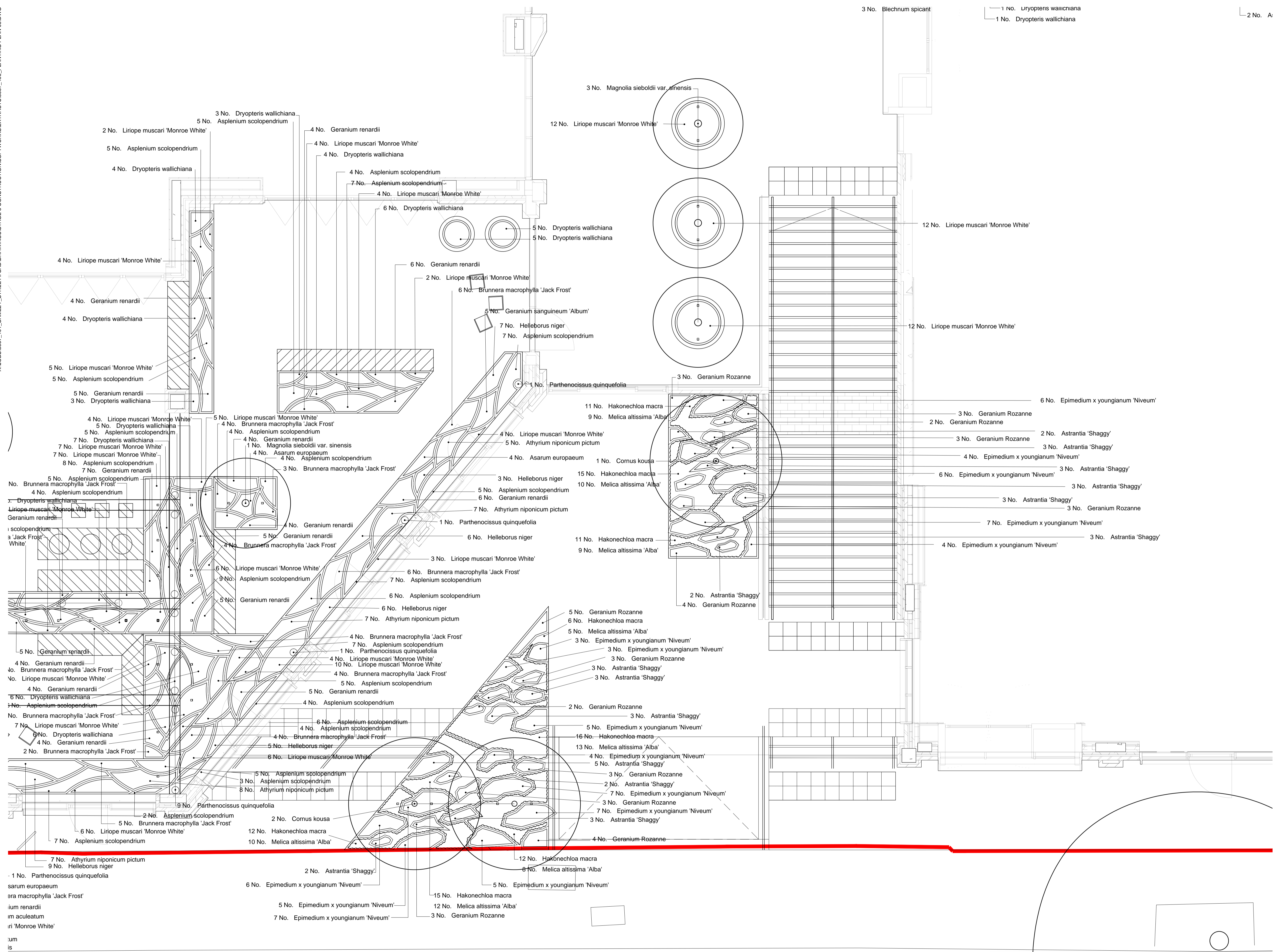
DRAWING TITLE
Stage 5: Construction
Planting Plan
Sheet 05

ISSUED BY	Exeter	T: 01392 260 430
DATE	Jan 2019	DRAWN MC
SCALE	1:200	CHECKED AW
STATUS	Construction	APPROVED RAs

DWG. NO 657_405

No dimensions are to be scaled from this drawing. All dimensions are to be checked on site. Area measurements for indicative purposes only.

© LDA Design Consulting Ltd. Quality Assured to BS EN ISO 9001:2008
Sources: Ordnance Survey



1 No. *Dryopteris wallichiana*
 1 No. *Dryopteris wallichiana*

2 No. *A*

LEGEND

- This drawing is to be read in conjunction with all other drawings and specifications.
- Do not scale off this drawing. Written dimensions to be taken only.
- Any discrepancies found between this drawing and other drawings and specifications in the construction documents must be referred to the Landscape Architect prior to work commencing.
- This drawing must not be copied in whole or in part without written consent of LDA design.
- These drawings are for finishes only. All foundation, fixing, paving depths and drainage details to be provided by others.
- All dimensions in mm unless otherwise stated.
- Where dimension sizes of units are given they state length x width x depth.

NOTES:

REFER TO GENERAL ARRANGEMENT LAYOUT AND REFERENCE PLANS DWG 6567_100 - 104

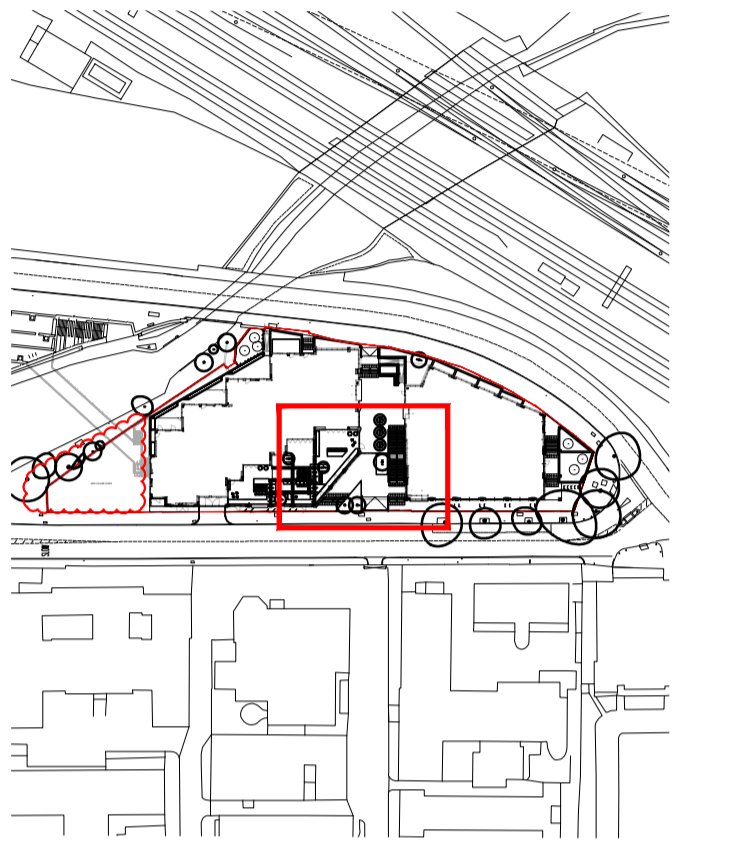
REFER TO HARDWORKS LAYOUT AND REFERENCE PLAN DWG 6567_200

REFER TO FURNITURE LAYOUT AND REFERENCE PLAN DWG 6567_400

REFER TO SOFTWORKS LAYOUT AND REFERENCE PLAN DWG 6567_300

TO BE READ IN CONJUNCTION WITH LANDSCAPE ARCHITECT'S EXTERNAL WORKS SPECIFICATION.

TO BE READ IN CONJUNCTION WITH ARCHITECT'S GA DRAWINGS 0010 SERIES



— SITE BOUNDARY

○ PROPOSED TREES

READ THIS FIRST

- Note for Contractors**
This drawing should be considered along with the risk information contained in the CDM Pre Construction Information. This information will include details of the SIGNIFICANT risks which LDA Design has identified which may arise from constructing their designs shown on this drawing. A Competent Contractor should be aware of the typical risks associated with doing this work.
- Note for Workers**
DO NOT START YOUR WORK unless you know the Risks and Controls relating to the work on this drawing (including SAFE SEQUENCES OF WORK and EQUIPMENT).
- Do not issue copies of parts of this drawing without the above Note for Workers (unless you are sure that the Workers can undertake the work safely).

REV.	DESCRIPTION	AW DATE
A	Construction Issue	AW 21/01/19

LDA DESIGN

PROJECT TITLE
101 Camley Street

DRAWING TITLE
Stage 5: Construction
Planting Plan
Sheet 06

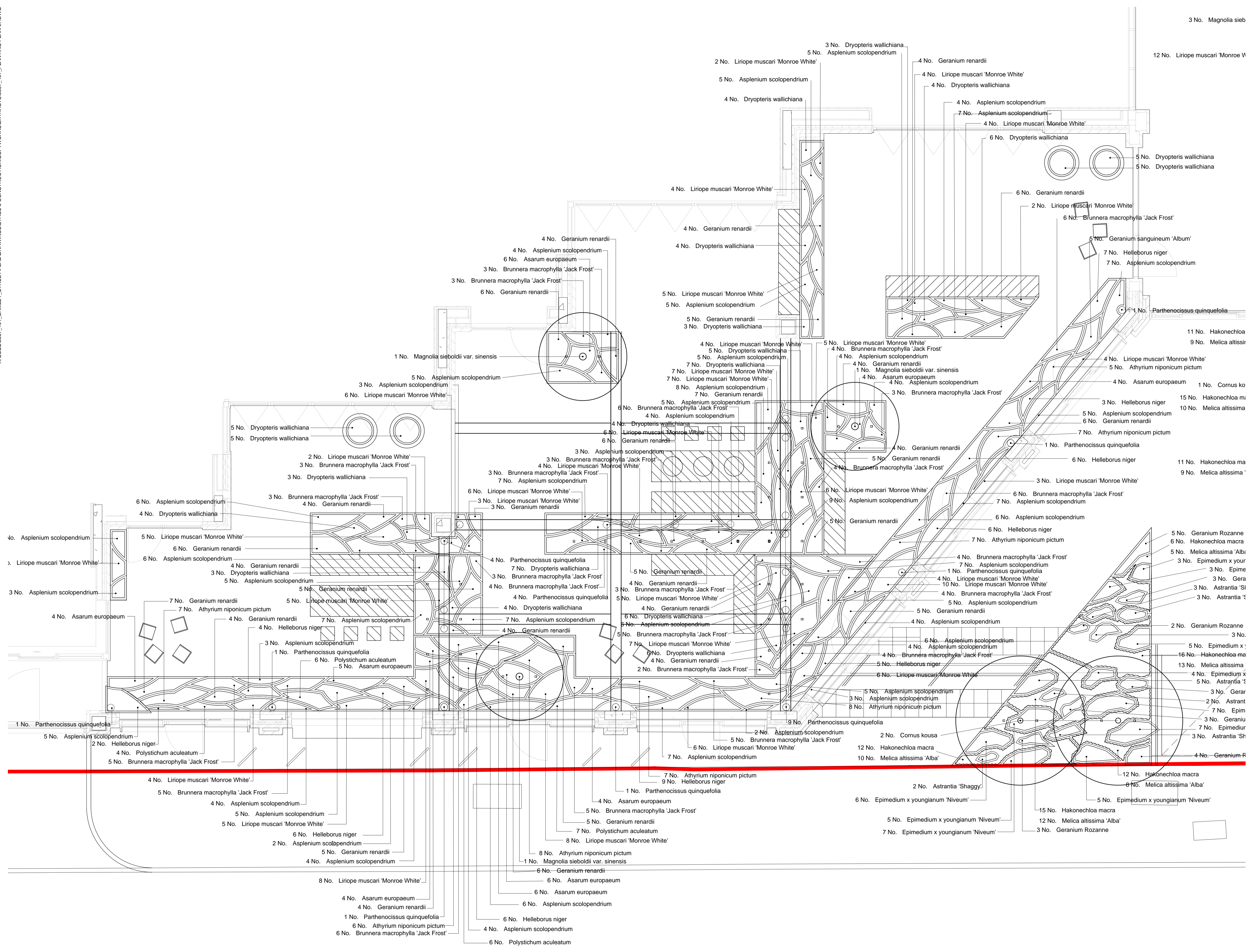
ISSUED BY: Exeter T: 01392 260 430
 DATE: Jan 2019 DRAWN: MC
 SCALE: A1 1:200 CHECKED: AW
 STATUS: Construction APPROVED: RAS

DWG. NO 5657_406

No dimensions are to be scaled from this drawing. All dimensions are to be checked on site. Area measurements for indicative purposes only.

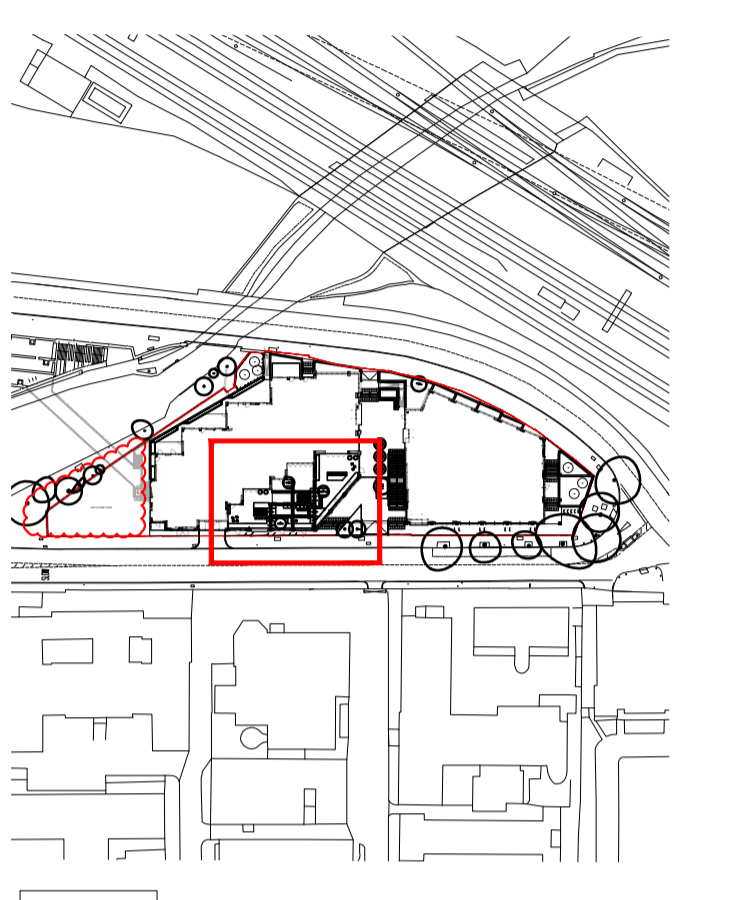
© LDA Design Consulting Ltd. Quality Assured to BS EN ISO 9001 : 2008
 Sources: Ordnance Survey





- LEGEND
1. This drawing is to be read in conjunction with all other drawings and specifications.
 2. Do not scale off this drawing. Written dimensions to be taken only.
 3. Any discrepancies found between this drawing and other drawings and specifications in the construction documents must be referred to the Landscape Architect prior to work commencing.
 4. This drawing must not be copied in whole or in part without written consent of LDA design.
 5. These drawings are for finishes only. All foundation, fixing, paving depths and drainage details to be provided by others.
 6. All dimensions in mm unless otherwise stated.
 7. Where dimension sizes of units are given they state length x width x depth.

- NOTES:
- REFER TO GENERAL ARRANGEMENT LAYOUT AND REFERENCE PLANS DWG 657_100 - 104
- REFER TO HARDWORKS LAYOUT AND REFERENCE PLAN DWG 657_200
- REFER TO FURNITURE LAYOUT AND REFERENCE PLAN DWG 657_300
- REFER TO SOFTWARE LAYOUT AND REFERENCE PLAN DWG 657_400
- TO BE READ IN CONJUNCTION WITH LANDSCAPE ARCHITECT'S EXTERNAL WORKS SPECIFICATION
- TO BE READ IN CONJUNCTION WITH ARCHITECT'S GA DRAWINGS 0010 SERIES



1. SITE BOUNDARY
2. PROPOSED TREES

- READ THIS FIRST**
- Note for Contractors**
This drawing should be considered along with the risk information contained in the CDM Pre Construction Information. This information will include details of the SIGNIFICANT risks which LDA Design has identified which may arise from constructing their designs shown on this drawing. A Competent Contractor should be aware of the typical risks associated with doing this work.
- Note for Workers**
DO NOT START YOUR WORK unless you know the Risks and Controls relating to the work on this drawing (including SAFE SEQUENCES OF WORK AND EQUIPMENT).
- Do not issue copies of parts of this drawing without the above Note for Workers (unless you are sure that the Workers can undertake the work safely).

REV.	DESCRIPTION	DATE
A	Construction Issue	21/01/19

LDA DESIGN

PROJECT TITLE
101 Camley Street

DRAWING TITLE
Stage 5: Construction
Planting Plan
Sheet 07

ISSUED BY	Exeter	T: 01392 260 430
DATE	Jan 2019	DRAWN
SCALE	1:200	CHECKED
STATUS	Construction	APPROVED

DWG. NO 5657_407

No dimensions are to be scaled from this drawing. All dimensions are to be checked on site. Area measurements for indicative purposes only.

© LDA Design Consulting Ltd. Quality Assured to BS EN ISO 9001 : 2008
Sources: Ordnance Survey

PLANT SCHEDULE**Trees**

Number	Species	Specification	Density
4 No.	Cornus kousa	Light Standard :Clear Stem 150-175 :RB :5 brks :3x	Counted

Shrubs

Number	Species	Specification	Density
6 No.	Magnolia sieboldii var. sinensis	Branched :5 brks :BR	Counted
6 No.	Hamamelis x intermedia 'Pallida'	Branched :5 brks :RB	Counted

Herbaceous

Number	Species	Specification	Density
252 No.	Astrantia 'Shaggy'	4 Buds :Full Pot	9/m ²
312 No.	Epimedium x youngianum 'Niveum'	4 Buds :Full Pot	9/m ²
86 No.	Tellima grandiflora	4 Buds :Full Pot	9/m ²
95 No.	Geranium Rozanne	4 Buds :Full Pot	9/m ²
102 No.	Brunnera macrophylla 'Jack Frost'	4 Buds :Full Pot	9/m ²
145 No.	Geranium renardii	4 Buds :Full Pot	9/m ²
43 No.	Asarum europaeum	4 Buds :Full Pot	9/m ²
54 No.	Helleborus niger	4 Buds :Full Pot	9/m ²
5 No.	Geranium sanguineum 'Album'	4 Buds :Full Pot	9/m ²

Climbers

Number	Species	Specification	Density
36 No.	Parthenocissus quinquefolia	Several Shoots :3/4 brks :Caned	Counted

Conifers

Number	Species	Specification	Density
101 No.	Taxus baccata	Leader & laterals :4x	2/m

Ferns

Number	Species	Specification	Density
144 No.	Blechnum spicant	Full Pot	9/m ²
231 No.	Asplenium scolopendrium	Full Pot	9/m ²
157 No.	Dryopteris wallichiana	Full Pot	9/m ²
84 No.	Polystichum aculeatum	Full Pot	9/m ²
55 No.	Athyrium niponicum pictum	Full Pot	9/m ²

Grasses

Number	Species	Specification	Density
798 No.	Hakonechloa macra	Full Pot	9/m ²
592 No.	Melica altissima 'Alba'	Full Pot	11/m ²
52 No.	Melica altissima 'Alba'	Full Pot	9/m ²
197 No.	Liriope muscari 'Monroe White'	Full Pot	9/m ²

LEGEND

1. This drawing is to be read in conjunction with all other drawings and specifications.
2. Do not scale off this drawing. Written dimensions to be taken only.
3. Any discrepancies found between this drawing and other drawings and specifications in the construction documents must be referred to the Landscape Architect prior to work commencing.
4. This drawing must not be copied in whole or in part without written consent of LDA design.
5. These drawings are for finishes only. All foundation, fixing, paving depths and drainage details to be provided by others.
6. All dimensions in mm unless otherwise stated.
7. Where dimension sizes of units are given they state length x width x depth.

NOTES:

REFER TO GENERAL ARRANGEMENT LAYOUT AND REFERENCE PLANS DWG 667_100 - 104

REFER TO HARDWORKS LAYOUT AND REFERENCE PLAN DWG 667_200

REFER TO FURNITURE LAYOUT AND REFERENCE PLAN DWG 667_300

REFER TO SOFTWARE LAYOUT AND REFERENCE PLAN DWG 667_400

TO BE READ IN-CONJUNCTION WITH LANDSCAPE ARCHITECT'S EXTERNAL WORKS SPECIFICATION.

TO BE READ IN CONJUNCTION WITH ARCHITECT'S GA DRAWINGS 0010 SERIES

READ THIS FIRST

- Note for Contractors**
This drawing should be considered along with the risk information contained in the CDM Pre Construction Information. This information will include details of the SIGNIFICANT risks which LDA Design has identified which may arise from constructing their designs shown on this drawing. A Competent Contractor should be aware of the typical risks associated with doing this work.
- Note for Workers**
DO NOT START YOUR WORK unless you know the Risks and Controls relating to the work on this drawing (including SAFE SEQUENCES OF WORK and EQUIPMENT).
- Do not issue copies of parts of this drawing without the above Note for Workers (unless you are sure that the Workers can undertake the work safely).

REV.	DESCRIPTION	APP.	DATE
A	Construction issue		AW 21/01/19

LDA DESIGN

PROJECT TITLE
101 Camley Street

DRAWING TITLE
Stage 5: Construction
Plant Schedule

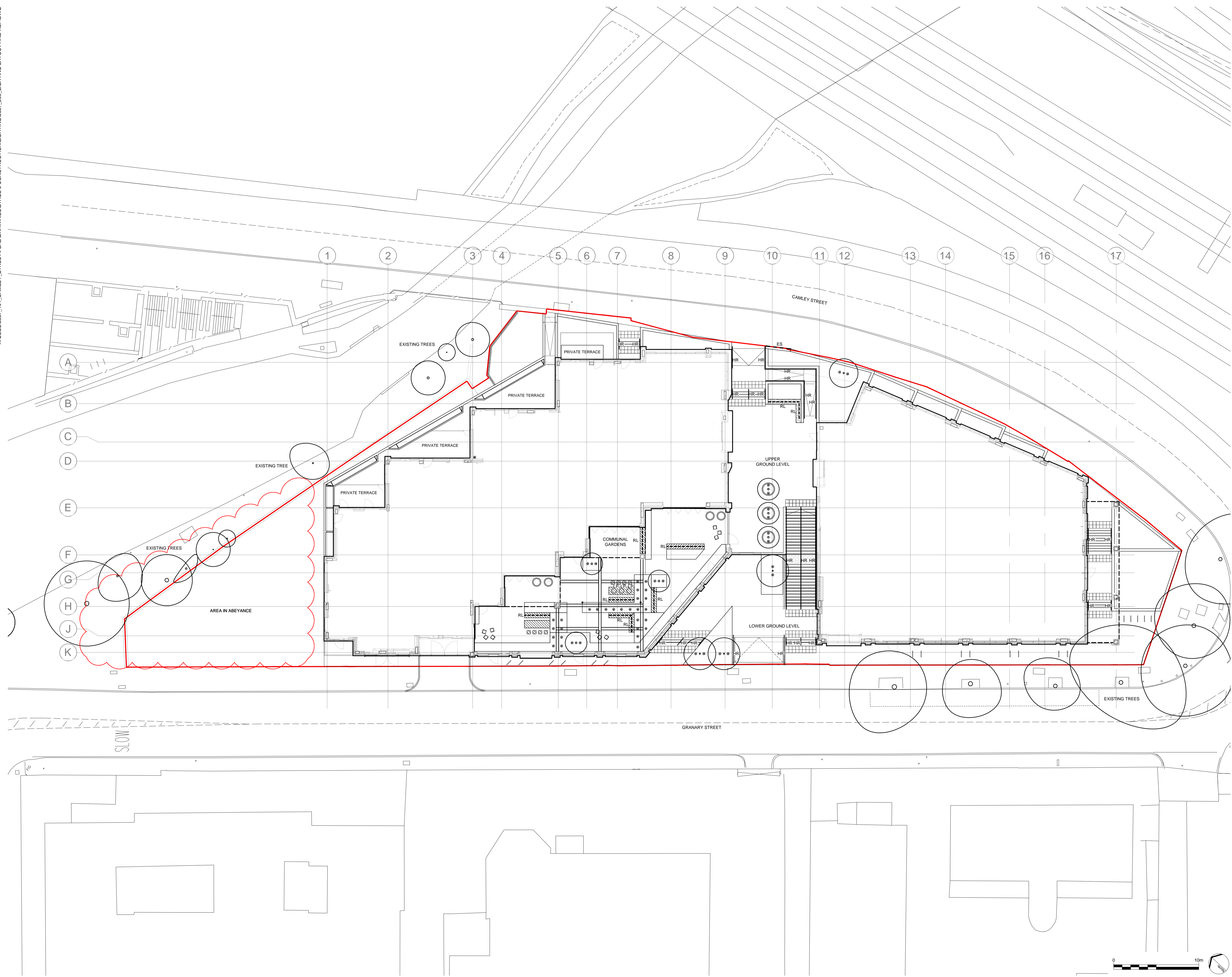
ISSUED BY	Exeter	T: 01392 260 430
DATE	Jan 2019	DRAWN MC
SCALE:RA1	1:200	CHECKED AW
STATUS	Construction	APPROVED RAs

DWG. NO 5657_408

No dimensions are to be scaled from this drawing.
All dimensions are to be checked on site.
Area measurements for indicative purposes only.

© LDA Design Consulting Ltd. Quality Assured to BS EN ISO 9001 : 2008
Sources Ordnance Survey





LEGEND

- This drawing is to be read in conjunction with all other drawings and specifications.
- Do not scale off this drawing. Written dimensions to be taken only.
- Any discrepancies found between this drawing and other drawings and specifications in the construction documents must be referred to the Landscape Architect prior to work commencing.
- This drawing must not be copied in whole or in part without written consent of LDA design.
- These drawings are for finishes only. All foundation, fixing, paving depths and drainage details to be provided by others.
- All dimensions in mm unless otherwise stated.
- Where dimension sizes of units are given they state length x width x depth.

NOTES:

REFER TO GENERAL ARRANGEMENT LAYOUT AND REFERENCE PLANS DWG 5657_100_104

REFER TO HARDWORKS LAYOUT AND REFERENCE PLAN DWG 5657_200

REFER TO FURNITURE LAYOUT AND REFERENCE PLAN DWG 5657_300

REFER TO SOFTWORKS LAYOUT AND REFERENCE PLAN DWG 5657_400

TO BE READ IN CONJUNCTION WITH LANDSCAPE ARCHITECT'S EXTERNAL WORKS SPECIFICATION.

TO BE READ IN CONJUNCTION WITH ARCHITECT'S GA DRAWINGS 0010 SERIES

- SITE BOUNDARY
- LIGHTING TO RAISED PLANTERS
PRODUCT: PALCO INOUT
48mm DIA
POWDER COATED TO RAL 7021
SUPPLIER: IGUZZINI
REFER TO DWG 5657_510 D69
- LIGHTING PENDANT TO PERGOLA
PRODUCT: SOHO 57
570mm DIA x 305mm
COLOUR: BLACK
SUPPLIER: MARSET
REFER TO DWG 5657_510 D70
- HANDRAIL
GARDA LED 900mm HEIGHT 50mm DIA HANDRAIL
BRONZE FINISH
SUPPLIER: DW WINDSOR
- RECESSED LED LIGHTING TO BESPOKE FURNITURE
TO MANUFACTURERS SPECIFICATION AND DETAILS
REFER TO 5657_316-318
- LIGHTING TO ENTRANCE SIGN
BNRS LINEAR LICE COMPACTED RECESSED
WARM 3000K
SIZE: 1129 x 101 x 117
SUPPLIER: IGUZZINI
REFER TO DWG 5657_511 D71

READ THIS FIRST

- Note for Contractors**
This drawing should be considered along with the risk information contained in the CDM Pre Construction Information. This information will include details of the SIGNIFICANT risks which LDA Design has identified which may arise from constructing their designs shown on this drawing. A Competent Contractor should be aware of the typical risks associated with doing this work.
- Note for Workers**
DO NOT START YOUR WORK unless you know the Risks and Controls relating to the work on this drawing (including SAFE SEQUENCES OF WORK and EQUIPMENT).
- Do not issue copies of parts of this drawing without the above Note for Workers (unless you are sure that the Workers can undertake the work safely).

REV.	DESCRIPTION	APP.	DATE
C	Construction issue	AW	21/01/19
B	Added lighting strips to entrance sign	AW	12/09/17
A	Added tree with uplighting to lower Ground Floor	AW	11/09/17

LDA DESIGN

PROJECT TITLE
101 Camley Street

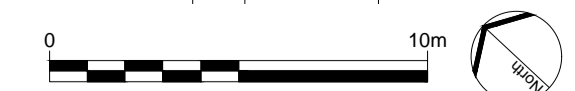
DRAWING TITLE
Stage 5: Construction
Lighting Layout and Reference Plan

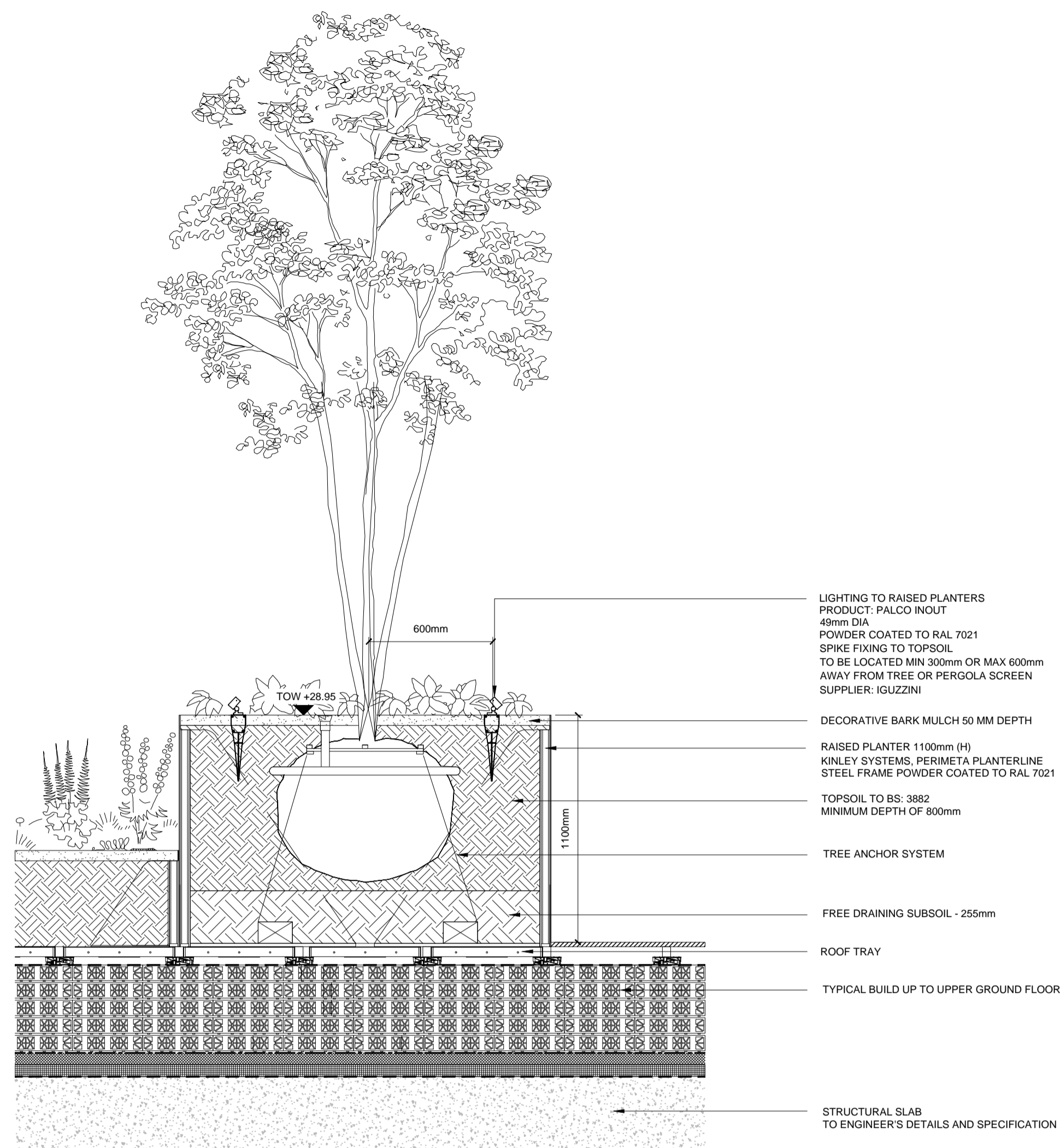
ISSUED BY	Exeter	T: 01392 260 430
DATE	August 2017	DRAWN
SCALE: A1	1:200	CHECKED
STATUS	Construction	APPROVED

DWG. NO 5657_500

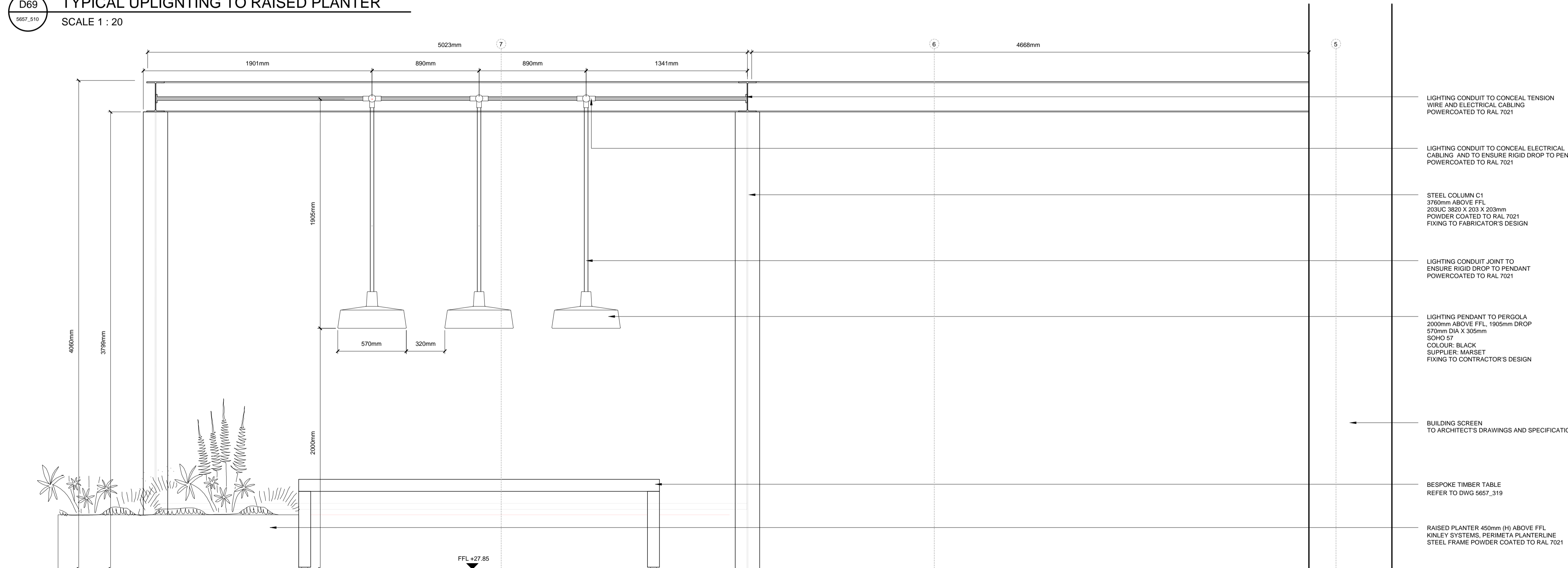
No dimensions are to be scaled from this drawing.
All dimensions are to be checked on site.
Area measurements for indicative purposes only.

© LDA Design Consulting Ltd. Quality Assured to BS EN ISO 9001 : 2008
Sources: Ordnance Survey





D69 TYPICAL UPLIGHTING TO RAISED PLANTER
 SCALE 1 : 20



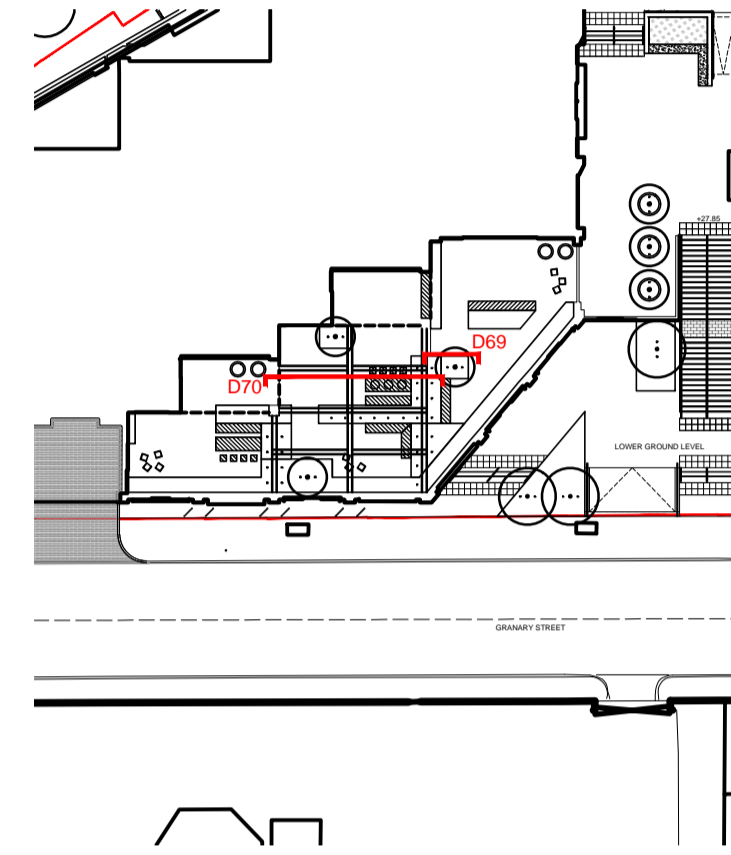
D70 LIGHTING PENDANT TO PERGOLA
 SCALE 1 : 20

LEGEND

1. This drawing is to be read in conjunction with all other drawings and specifications.
2. Do not scale off this drawing. Written dimensions to be taken only.
3. Any discrepancies found between this drawing and other drawings and specifications in the construction documents must be referred to the Landscape Architect prior to work commencing.
4. This drawing must not be copied in whole or in part without written consent of LDA design.
5. These drawings are for finishes only. All foundation, fixing, paving depths and drainage details to be provided by others.
6. All dimensions in mm unless otherwise stated.
7. Where dimension sizes of units are given they state length x width x depth.

NOTES:

- REFER TO GENERAL ARRANGEMENT LAYOUT AND REFERENCE PLANS DWG 5657_100 - 104
- REFER TO HARDWORKS LAYOUT AND REFERENCE PLAN DWG 5657_300
- REFER TO FURNITURE LAYOUT AND REFERENCE PLAN DWG 5657_300
- REFER TO SOFTWORKS LAYOUT AND REFERENCE PLAN DWG 5657_400
- REFER TO LIGHTING LAYOUT AND REFERENCE PLAN DWG 5657_500
- TO BE READ IN CONJUNCTION WITH LANDSCAPE ARCHITECT'S EXTERNAL WORKS SPECIFICATION.



READ THIS FIRST

- Note for Contractors**
 This drawing should be considered along with the risk information contained in the CDM Pre Construction Information. This information will include details of the SIGNIFICANT risks which LDA Design has identified which may arise from constructing their designs shown on this drawing. A Competent Contractor should be aware of the typical risks associated with doing this work.
- Note for Workers**
 DO NOT START YOUR WORK unless you know the Risks and Controls relating to the work on this drawing (including SAFE SEQUENCES OF WORK and EQUIPMENT).
- Do not issue copies of parts of this drawing without the above Note for Workers (unless you are sure that the Workers can undertake the work safely).

REV.	DESCRIPTION	DATE
A	Construction Issue	21/01/19

LDA DESIGN

PROJECT TITLE
 101 Camley Street

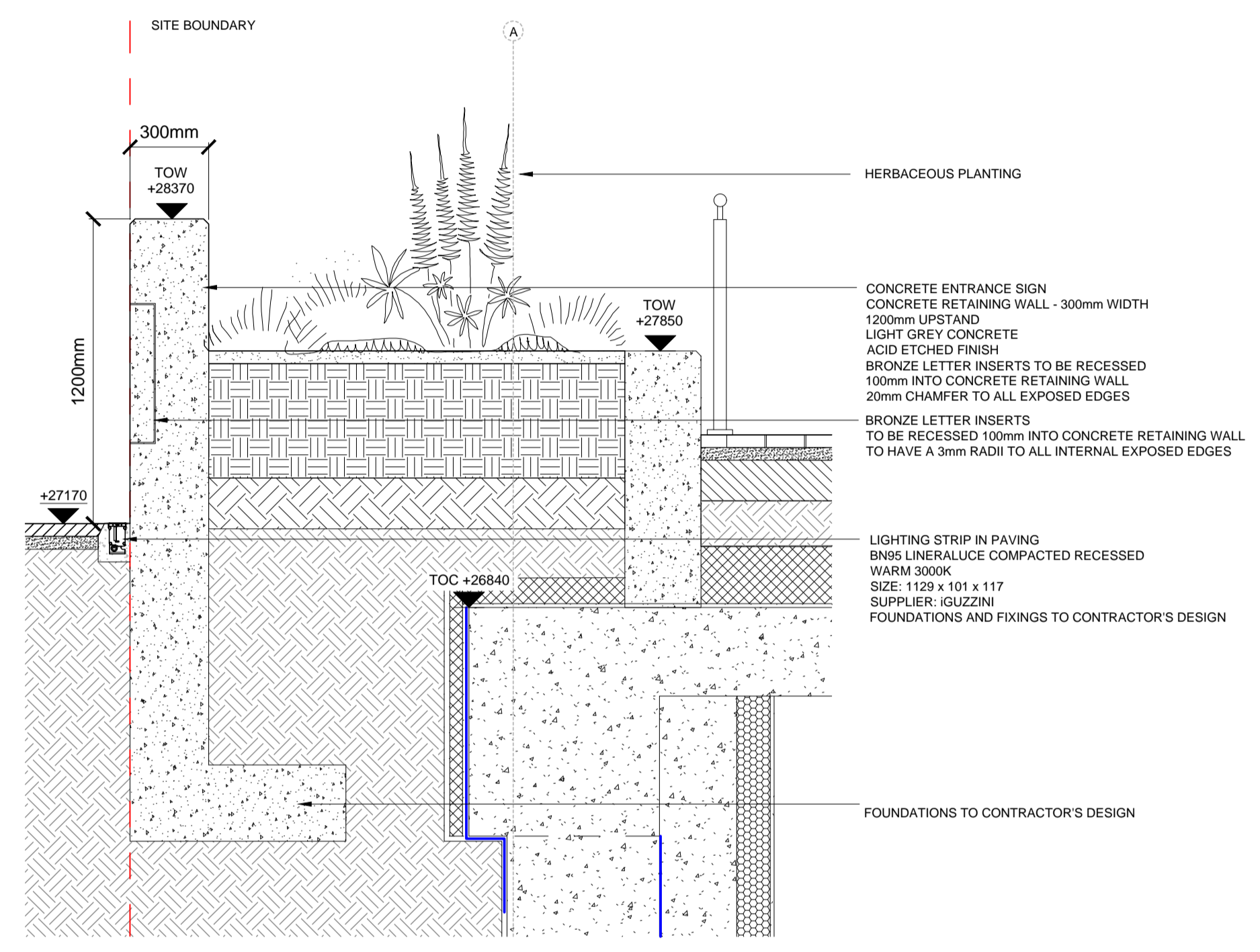
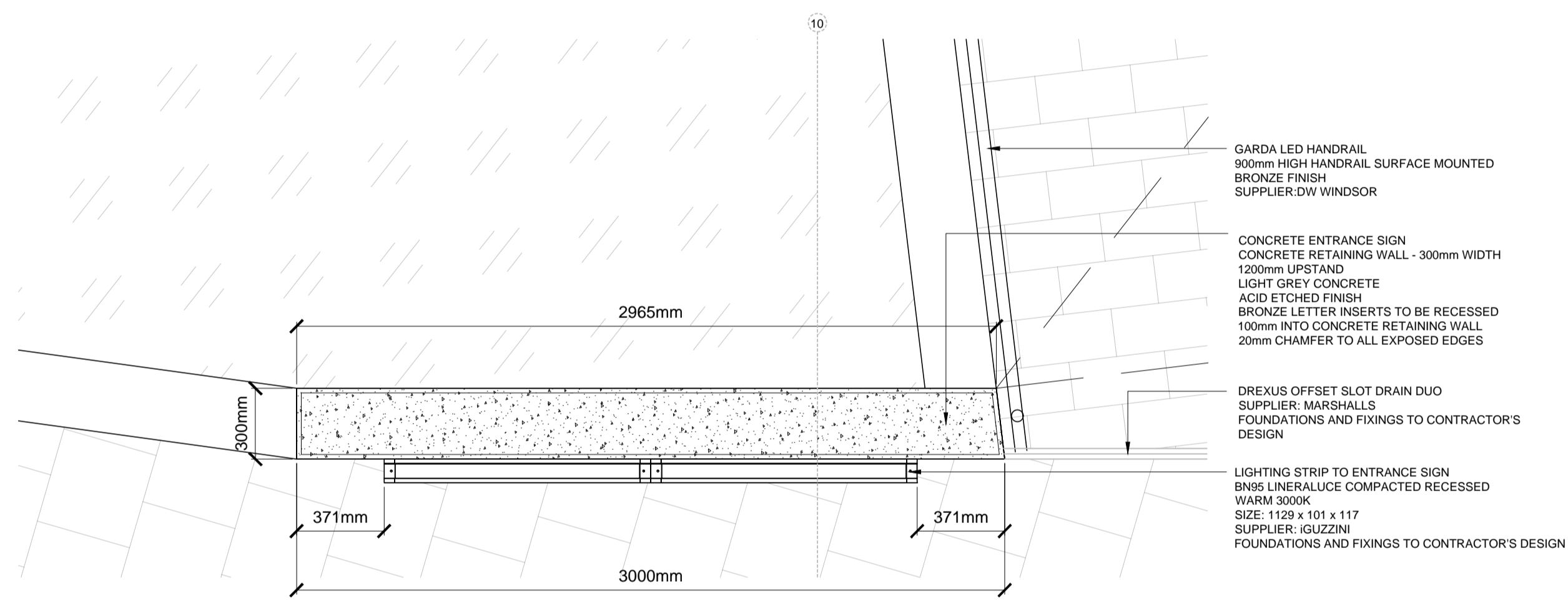
DRAWING TITLE
 Stage 5: Construction
 Lighting Details
 Sheet 01

ISSUED BY	Exeter	T: 01392 260 430	
DATE	Jan 2019	DRAWN	AW
SCALE	1:20	CHECKED	RA's
STATUS	Construction	APPROVED	RA's

DWG. NO 5657_510

No dimensions are to be scaled from this drawing. All dimensions are to be checked on site. Area measurements for indicative purposes only.
 © LDA Design Consulting Ltd. Quality Assured to BS EN ISO 9001 : 2008
 Sources: Ordnance Survey





D71 LIGHTING TO ENTRANCE SIGN
SCALE 1 : 20

LEGEND

- This drawing is to be read in conjunction with all other drawings and specifications.
- Do not scale off this drawing. Written dimensions to be taken only.
- Any discrepancies found between this drawing and other drawings and specifications in the construction documents must be referred to the Landscape Architect prior to work commencing.
- This drawing must not be copied in whole or in part without written consent of LDA design.
- These drawings are for finishes only. All foundation, fixing, paving depths and drainage details to be provided by others.
- All dimensions in mm unless otherwise stated.
- Where dimension sizes of units are given they state length x width x depth.

NOTES:

REFER TO GENERAL ARRANGEMENT LAYOUT AND REFERENCE PLANS DWG 5657_100 - 104

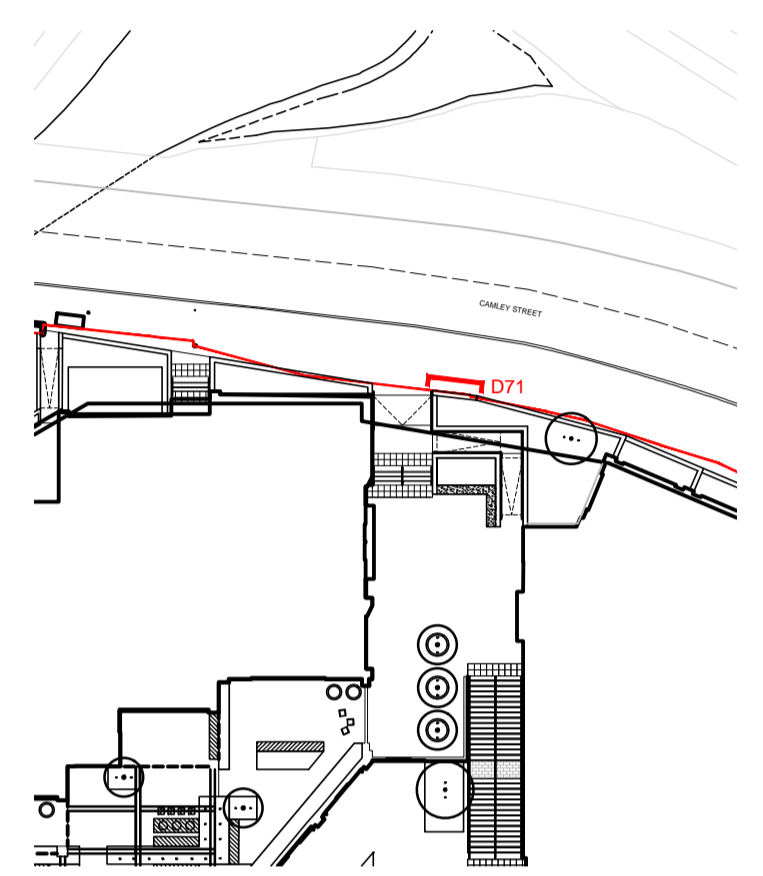
REFER TO HARDWORKS LAYOUT AND REFERENCE PLAN DWG 5657_200

REFER TO FURNITURE LAYOUT AND REFERENCE PLAN DWG 5657_300

REFER TO SOFTWARE LAYOUT AND REFERENCE PLAN DWG 5657_400

REFER TO LIGHTING LAYOUT AND REFERENCE PLAN DWG 5657_500

TO BE READ IN CONJUNCTION WITH LANDSCAPE ARCHITECT'S EXTERNAL WORKS SPECIFICATION.



READ THIS FIRST

Note for Contractors
This drawing should be considered along with the risk information contained in the CDM Pre Construction Information. This information will include details of the SIGNIFICANT risks which LDA Design has identified which may arise from constructing their designs shown on this drawing. A Competent Contractor should be aware of the typical risks associated with doing this work.

Note for Workers
DO NOT START YOUR WORK unless you know the Risks and Controls relating to the work on this drawing (including SAFE SEQUENCES OF WORK and EQUIPMENT).

Do not issue copies of parts of this drawing without the above Note for Workers (unless you are sure that the Workers can undertake the work safely).

REV.	DESCRIPTION	APP.	DATE
A	Construction issue	AW	21/01/19

LDA DESIGN

PROJECT TITLE
101 Camley Street

DRAWING TITLE
Stage 5: Construction
Lighting Details
Sheet 02

ISSUED BY	Exeter	T: 01392 260 430	
DATE	Jan 2019	DRAWN	AW
SCALE: A1	1:20	CHECKED	RA
STATUS	Construction	APPROVED	RA

DWG. NO 5657_511

No dimensions are to be scaled from this drawing. All dimensions are to be checked on site. Area measurements for indicative purposes only.

© LDA Design Consulting Ltd. Quality Assured to BS EN ISO 9001 : 2008
Sources: Ordnance Survey

