

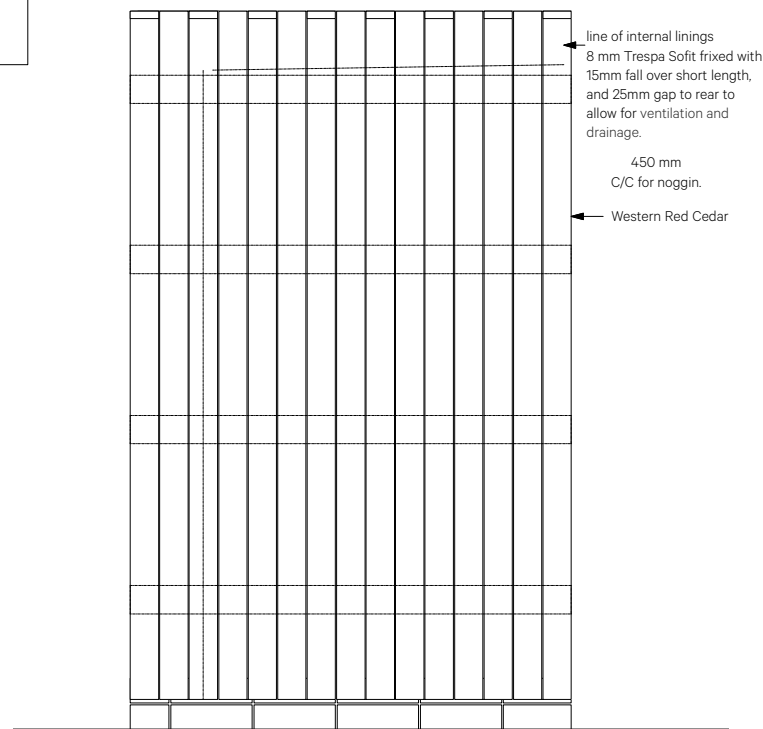
8mm Trespa Sofit frixed with 15mm fall over short length, and 25mm gap to rear to allow for ventilation and drainage.

1417

5 Refuse Store Elevation 4
Scale: 1:10

Exposed Ends of Western Red Cedar to alternate in direction to achieve toothed appearance.

1 Refuse Store Roof Plan
Scale: 1:10



4 Refuse store Elevation 2
Scale: 1:10

Revision	Date	Amendment	Notes
P1	06/03/19	First Issue	<p>Framing Ground Fixings to be agreed with landscaper sub-contractor Option A : Concrete footing with 2 no brick high brickwork base and softwood sole plate. Option B : Metal / Concrete fencing post fixings. Cladding to be held min 75mm clear above surrounding ground levels All to be agreed with landscape sub-contractor.</p> <p>NO DIMENSIONS ARE TO BE SCALED FROM THIS DRAWING. THE CONTRACTOR/MANUFACTURER IS RESPONSIBLE FOR CHECKING ALL DIMENSIONS AND QUERYING ANY DISCREPANCIES. THIS DRAWING IS THE PROPERTY OF BURWELL ARCHITECTS LTD. COPYRIGHT IS RESERVED BY THEM AND THE DRAWING IS ISSUED ON CONDITION THAT IT IS NOT COPIED, REPRODUCED, RETAINED OR DISCLOSED TO ANY UNAUTHORISED PERSON, EITHER WHOLLY OR IN PART WITHOUT WRITTEN CONSENT.</p>