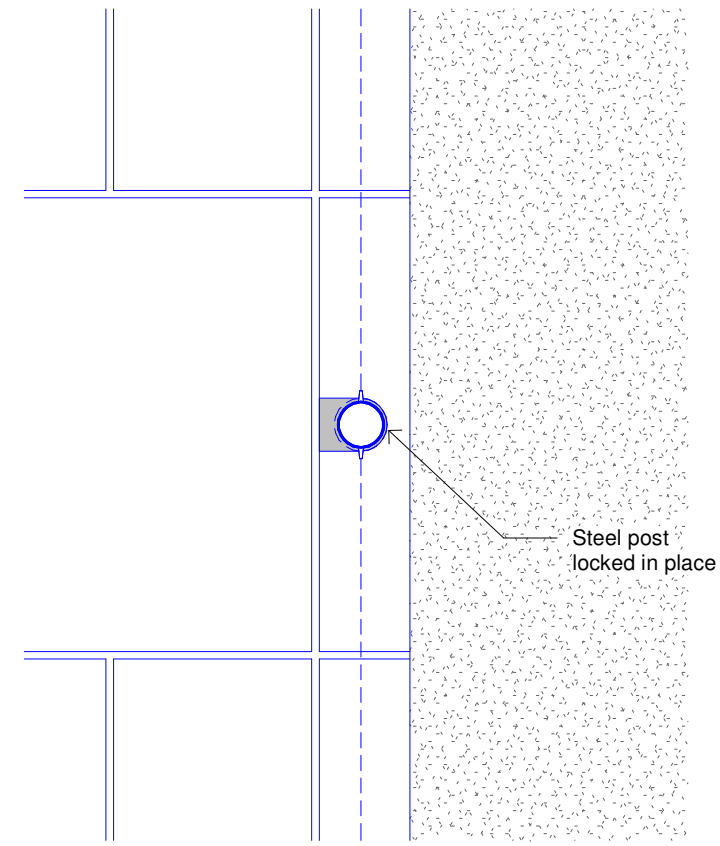
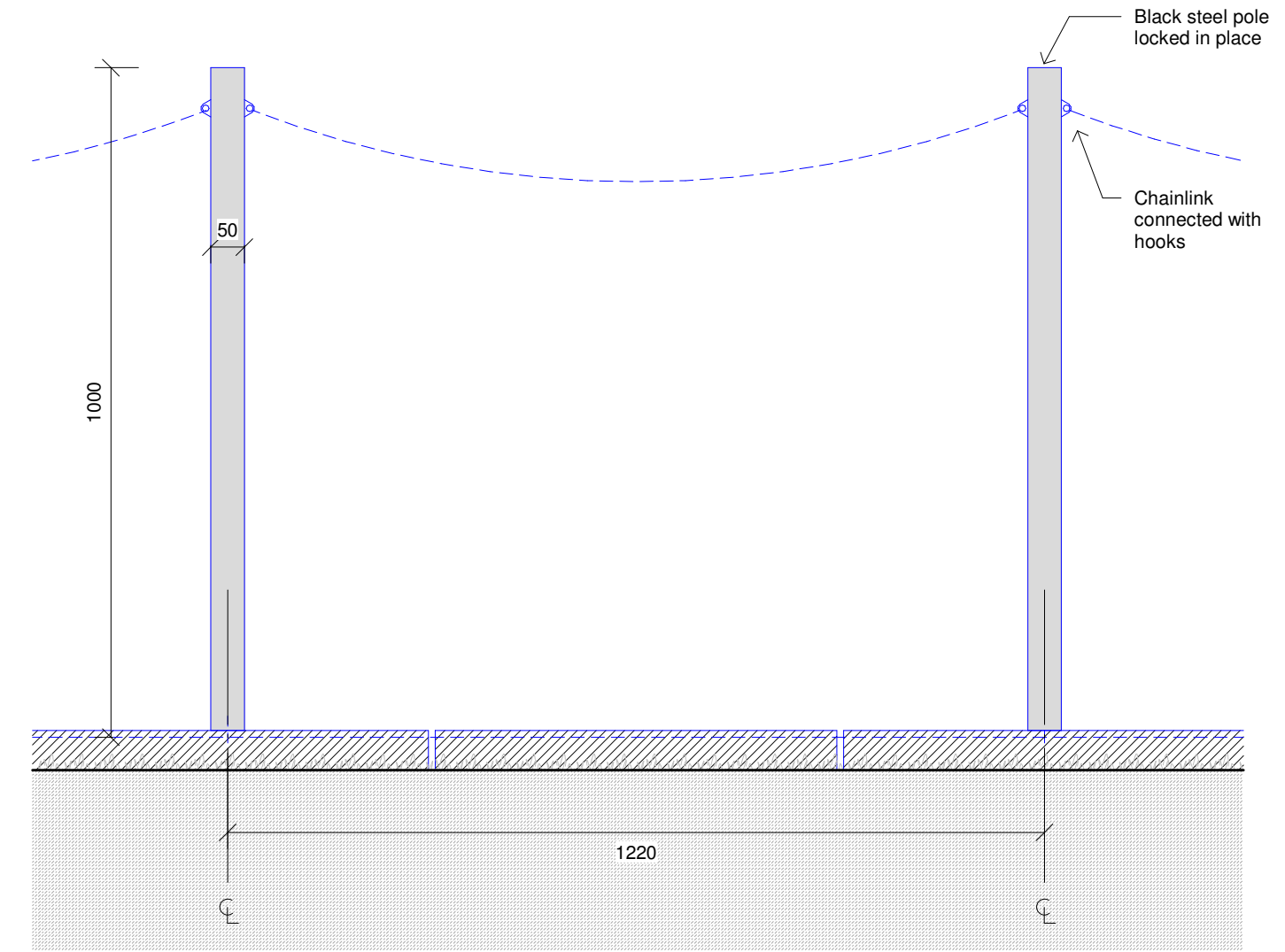


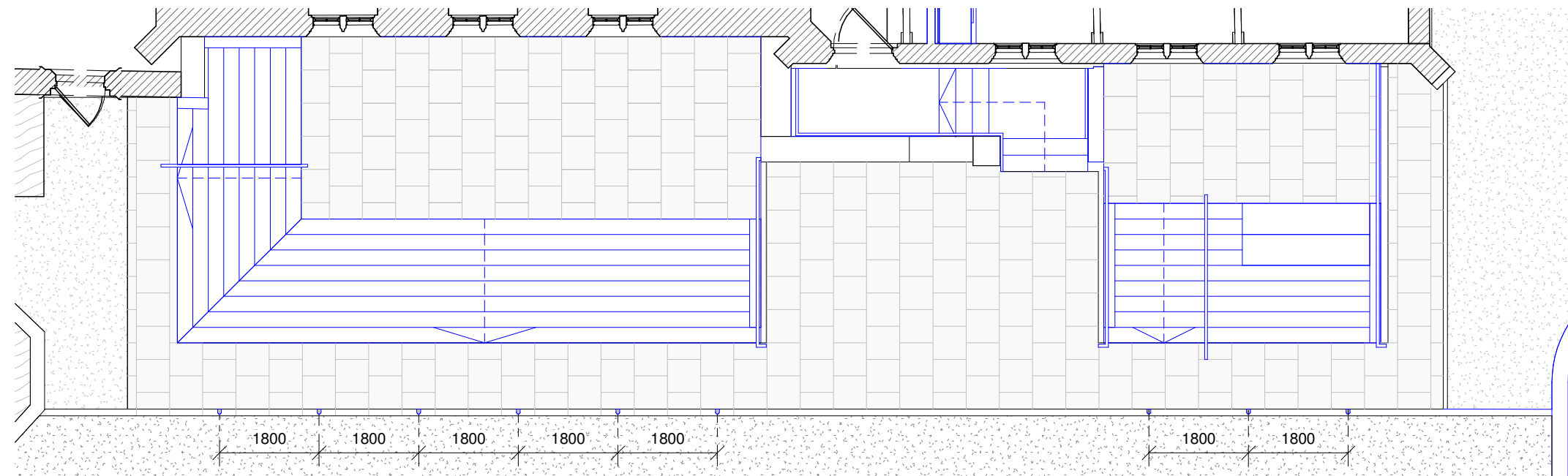
Plan 1 - everyday scenario



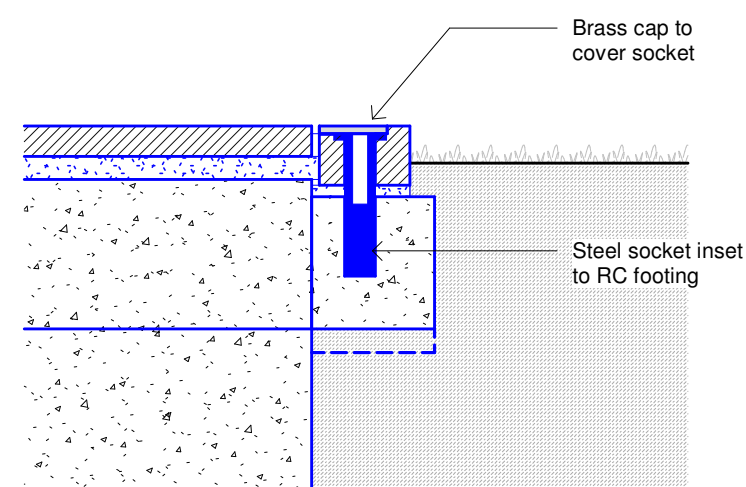
Plan 2 - event scenario



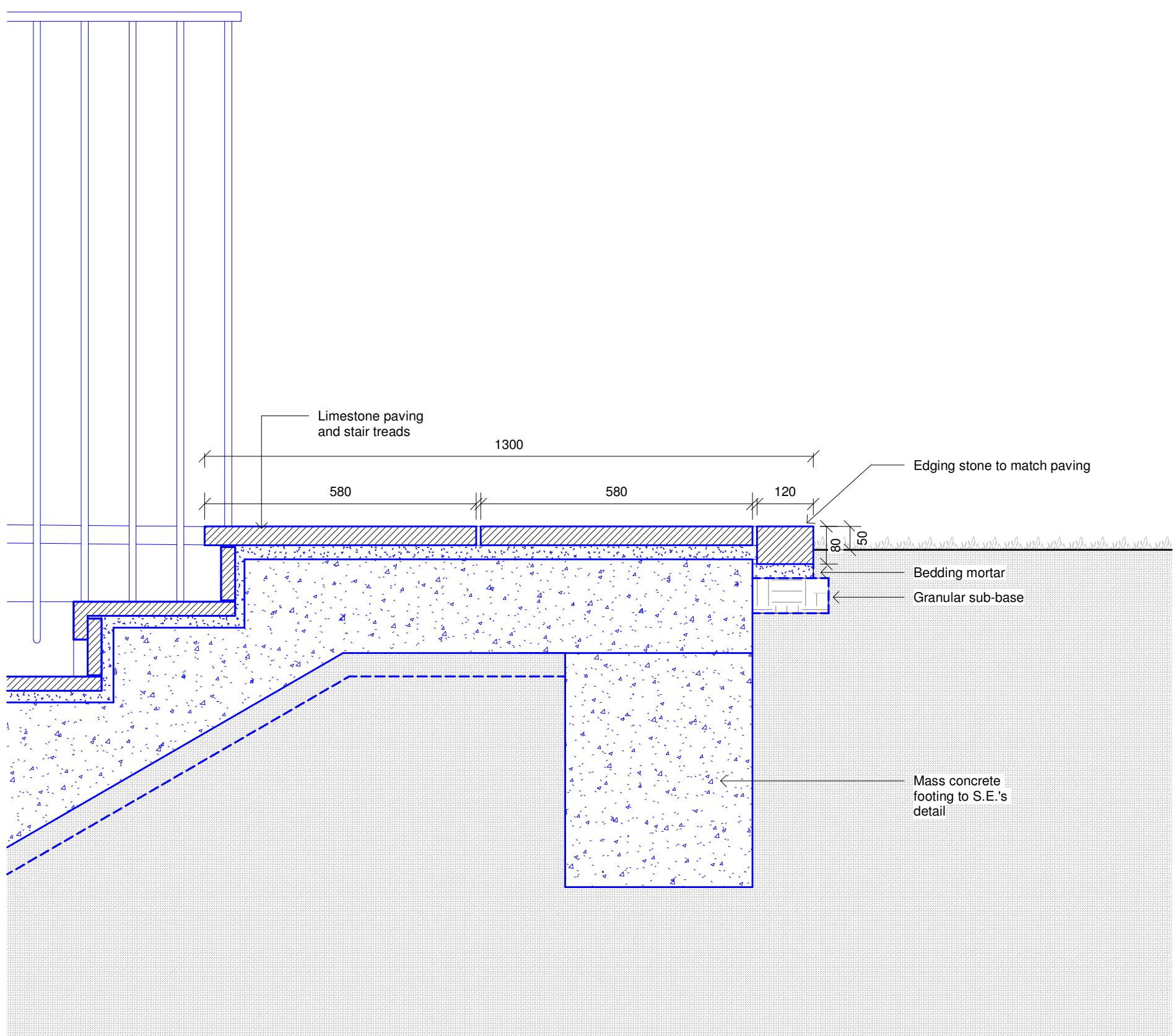
Elevation - event scenario



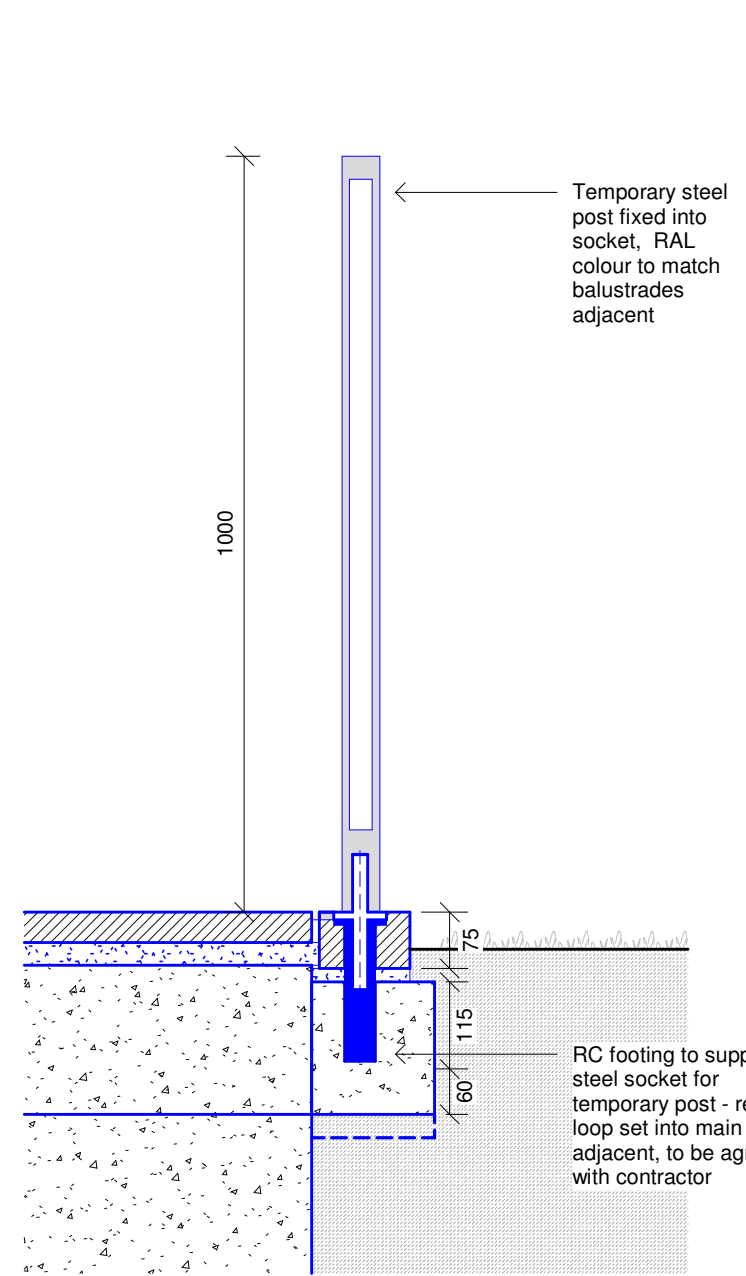
Plan - 1.100 - Temporary post locations  
1:100



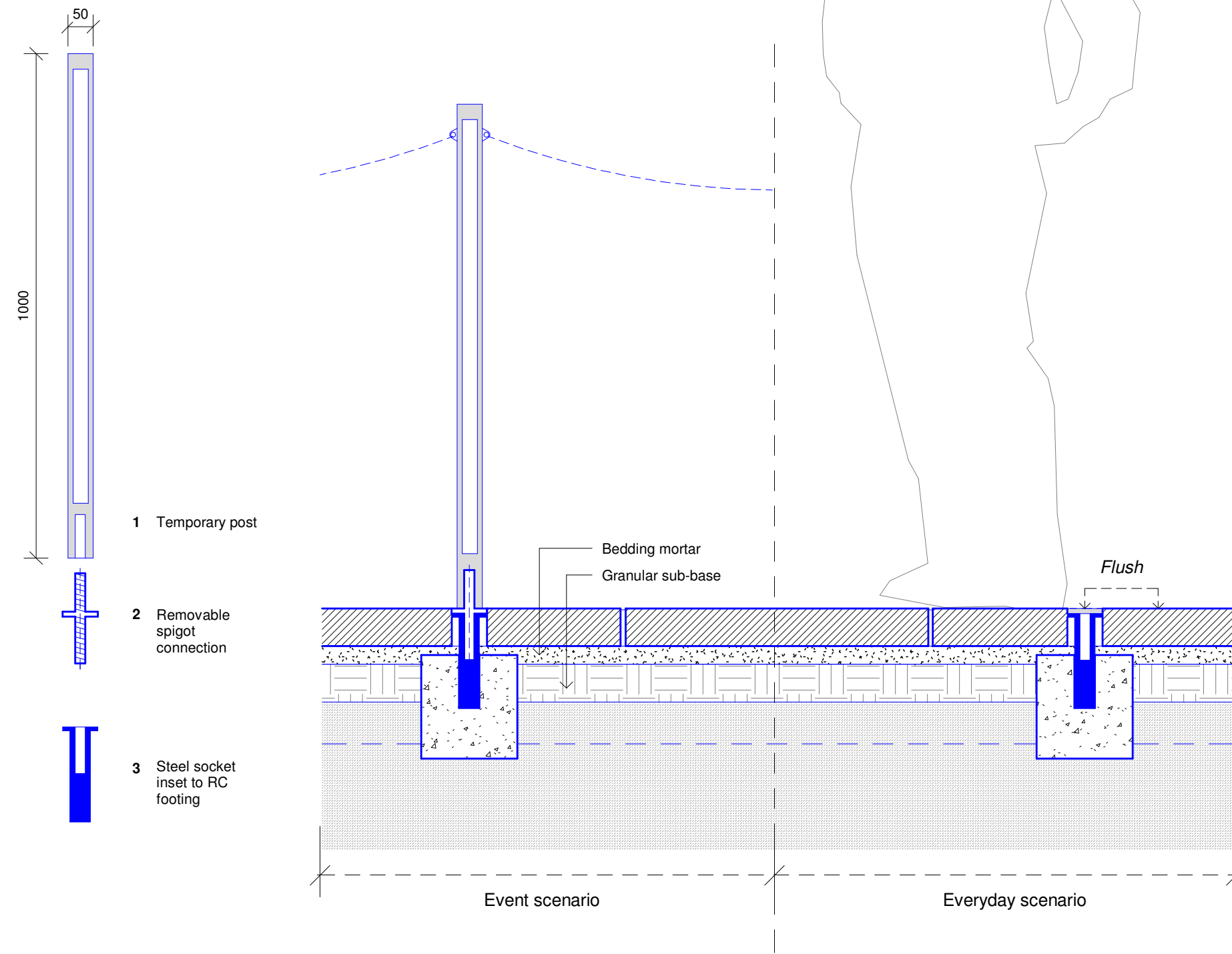
Sec B-B - everyday scenario



Sec A-A - everyday scenario



Sec B-B - event scenario



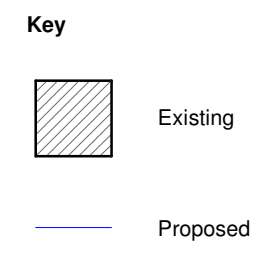
Sec C-C

GENERAL NOTES

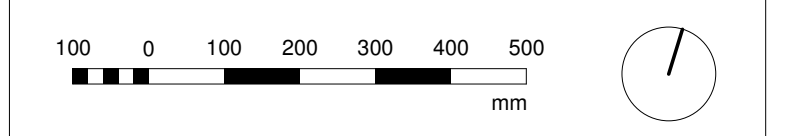
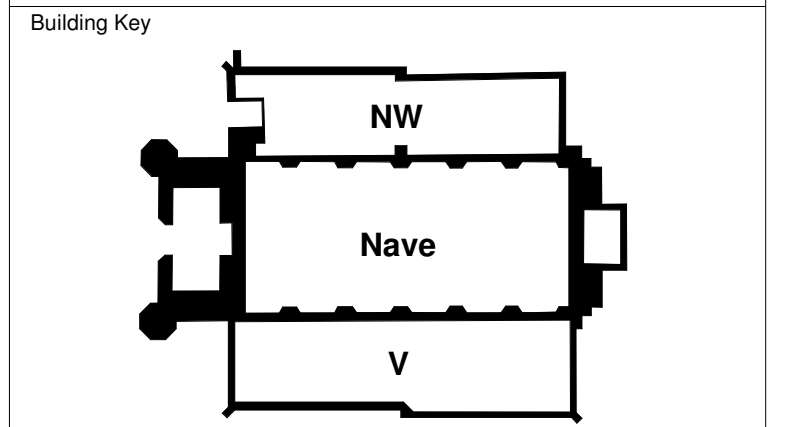
DO NOT SCALE OFF THIS DRAWING. ALL DIMENSIONS MUST BE CHECKED ON SITE INFORM THE ARCHITECT OF ANY DISCREPANCIES PRIOR TO CONSTRUCTION. THIS DRAWING IS COPYRIGHT & MAY NOT BE OTHERWISE USED OR COPIED. READ IN CONJUNCTION WITH M.E.P. S.E. AND CIVIL ENGINEER'S DRAWINGS.

CDM REGULATIONS 2015

ALL CURRENT DRAWINGS AND SPECIFICATIONS FOR THE PROJECT MUST BE READ IN CONJUNCTION WITH THE DESIGNER'S HAZARD AND ENVIRONMENTAL ASSESSMENT RECORD



The 9no. temporary steel posts are a client safety requirement, to act as a visual barrier / crowd containment measure (and essentially a protection from falling) for when a large crowd gathers in the south garden for an event. The majority of the time is the everyday scenario as shown, with the brass caps covering the sunken steel sockets.



The Danish Church  
4 St Katharine's Precinct  
London NW1 4HH

C.F. Møller

Telephone House, 69-77 Paul Street  
London, EC2A 4NW  
United Kingdom  
Tel.: +44 020 7427 1530  
london@cfmoller.com

Europaplads 2, 11  
8000 Aarhus C  
Denmark  
Tel.: +45 8730 5300  
www.cfmoller.com

Rev	Description	By	Chk	Date
B	Planning Condition Discharge	HBA	RN	18.03.19

The Danish Church

Title  
Landscape - Pathway Edge and  
Temporary Post Details

Project No.  
85331

Status  
Stage 4 - TENDER

Scale @ A1	Date	Revision
As indicated	08/02/19	B

Drawing Number  
85331-CFM-90-600