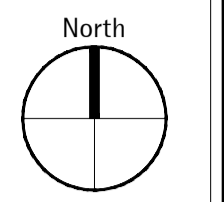


**FORM NOTE:**  
Refer to 2849-LA-01 for an assessment of all hazards and risks associated with the project. Details with high risk ratings specific to this drawing are listed adjacent for ease of reference.

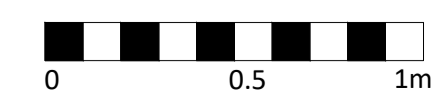
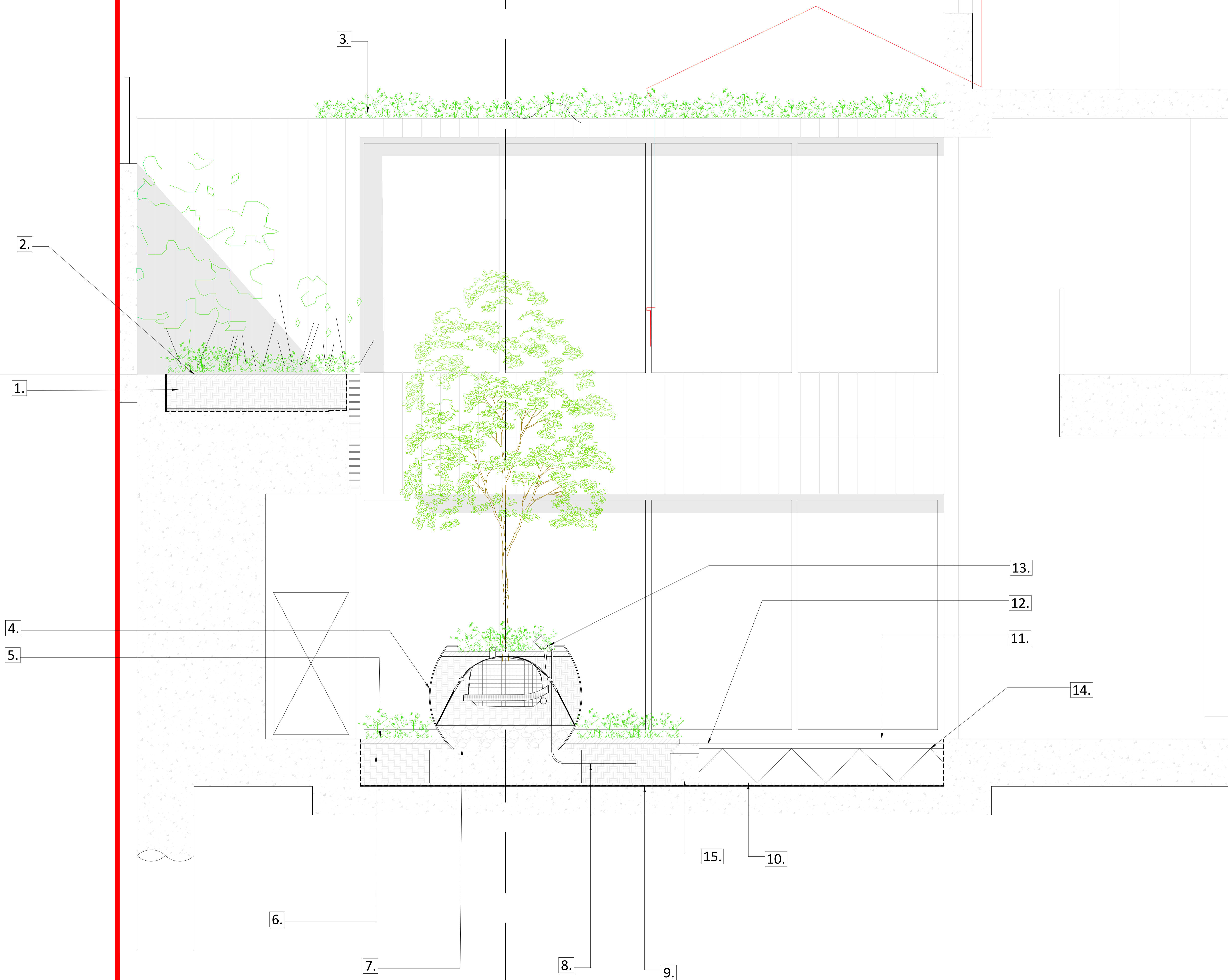
**1. INSERT TEXT HERE**

APAL FILE REFERENCE  
**2849-LA-01**

**Notes**  
This drawing is subject to copyright.  
Do not scale from this drawing.  
Based on drawing by RODIC DAVIDSON ARCHITECTS  
Drawing number 0881-P.101



- LEGEND**
1. 400mm Topsoil
  2. 50mm Ornamental Bark Mulch
  3. Green Roof to Architects detail
  4. Corten steel Globe tree planter produced by Streetlife, product similar or to be approved
  5. 50mm Ornamental bark mulch
  6. 415mm of Topsoil
  7. Concrete foundation plinth for pot
  8. 25mm drainage board
  9. 10mm water proofing to specialist detail
  10. Drainage from slab to Architects detail
  11. Marshalls PCC slab cut to 100mm width with contrasting slab as per hardscape general arrangement plan 2849-LA-01
  12. 50mm sand base
  13. Exterior grade tree up light
  14. Compacted MOT to engineers detail
  15. Concrete foundation to perimeter of paving area to restrain the paving edge



Rev	Description	Date	Drawn	Checked

Drawing Status  
**PLANNING**

**Allen Pyke**  
69A Lensfield Road,  
Cambridge, CB2 1EN  
T 01223 350695  
www.allenpyke.co.uk  
CAMBRIDGE • KINGSTON UPON THAMES  
A registered practice of the Landscape Institute

Client  
**WAXFLOWER PROPERTIES**

Scale  
1:20 @A1

Project  
**17 MILLFIELD ROAD  
LONDON**

By/Chk  
JB/APA

Drawing Title  
**SECTION OF HOUSE AND COURTYARD**

Date  
12/03/2019

Drawing Number  
**2849-DT-01**

Revision  
\*