

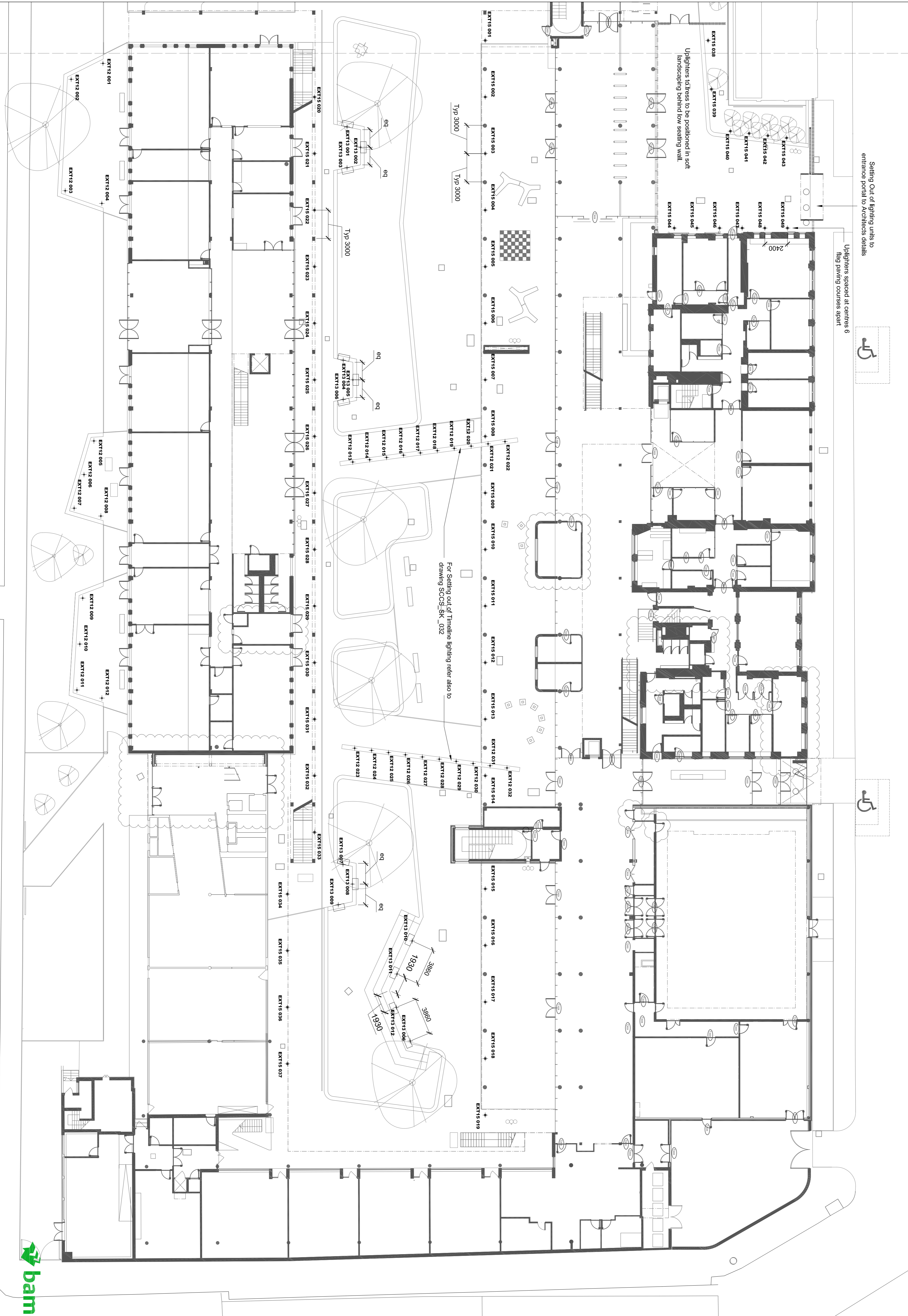
- NOTES:
1. Coordinates given to centre of lighting units / columns.
 2. All recessed lighting within concrete flag paving to be aligned equally and neatly with paving coursing. Lighting units to be positioned so as to minimise cutting of paving units. Light units have been positioned so as to be spaced with 400 x 400 mm paving grid. Final position of units can be adjusted on site so that they fit neatly with paving coursing.
 3. All EXT13 recessed lighting units to face of RC sealing walls to be positioned at a consistent datum. Top of lighting units to be 100mm below top of concrete (not 100mm below top of timber sealing).
 4. M.L.C = MUGA Lighting Column. - Coordinates given to centre of column. RC footing to all light columns to engineers (BGC details). All column footings located in soft landscape to be positioned below soft landscape.
 5. Top of all light column heights to be at a consistent datum / level.
 6. All footings to MUGA and column lighting to be coordinated with below ground drainage, services including ground source heat pile service trench. Any dashes to be checked and confirmed with design team.

Setting Out of lighting units to entrance portal to Architects details

Flag paving spaced at centres 6



Uplighters address to be positioned in soft landscaping behind low sealing wall.



External Lighting Setting Out

#	Existing	Setting Out
EXT12 001	529870252	183294454
EXT12 002	529870252	183294454
EXT12 003	529870252	183294454
EXT12 004	529870252	183294454
EXT12 005	529870252	183294454
EXT12 006	529870252	183294454
EXT12 007	529870252	183294454
EXT12 008	529870252	183294454
EXT12 009	529870252	183294454
EXT12 010	529870252	183294454
EXT12 011	529870252	183294454
EXT12 012	529870252	183294454
EXT12 013	529870252	183294454
EXT12 014	529870252	183294454
EXT12 015	529870252	183294454
EXT12 016	529870252	183294454
EXT12 017	529870252	183294454
EXT12 018	529870252	183294454
EXT13 001	529870252	183294454
EXT13 002	529870252	183294454
EXT13 003	529870252	183294454
EXT13 004	529870252	183294454
EXT13 005	529870252	183294454
EXT13 006	529870252	183294454
EXT13 007	529870252	183294454
EXT13 008	529870252	183294454
EXT13 009	529870252	183294454
EXT13 010	529870252	183294454
EXT13 011	529870252	183294454
EXT13 012	529870252	183294454
EXT13 013	529870252	183294454
EXT13 014	529870252	183294454
EXT13 015	529870252	183294454
EXT13 016	529870252	183294454
EXT13 017	529870252	183294454
EXT13 018	529870252	183294454
EXT15 001	529870252	183294454
EXT15 002	529870252	183294454
EXT15 003	529870252	183294454
EXT15 004	529870252	183294454
EXT15 005	529870252	183294454
EXT15 006	529870252	183294454
EXT15 007	529870252	183294454
EXT15 008	529870252	183294454
EXT15 009	529870252	183294454
EXT15 010	529870252	183294454
EXT15 011	529870252	183294454
EXT15 012	529870252	183294454
EXT15 013	529870252	183294454
EXT15 014	529870252	183294454
EXT15 015	529870252	183294454
EXT15 016	529870252	183294454
EXT15 017	529870252	183294454
EXT15 018	529870252	183294454

- GENERAL NOTES:
1. ALL DIMENSIONS AND LEVELS SHALL BE CHECKED ON SITE PRIOR TO COMMENCEMENT OF WORK.
 2. ALL LANDSCAPE DRAWINGS TO BE READ IN CONJUNCTION WITH ALL RELEVANT ENGINEER'S AND ARCHITECT'S DRAWINGS AND SPECIFICATIONS.
 3. ALL DRAWINGS TO BE READ IN CONJUNCTION WITH THE LANDSCAPE SPECIFICATION.
 4. REFERRED TO THE 'CAMDEN' DRAWINGS.
 5. ALL DIMENSIONS IN MILLIMETRES UNLESS NOTED OTHERWISE.
 6. DIMENSIONS TO FACE UNLESS NOTED OTHERWISE.
 7. DO NOT SCALE OFF THE DRAWING.
 8. EXISTING SERVICE ALIGNMENTS SHALL BE CHECKED ON SITE BY THE CONTRACTOR PRIOR TO COMMENCEMENT OF WORK.

