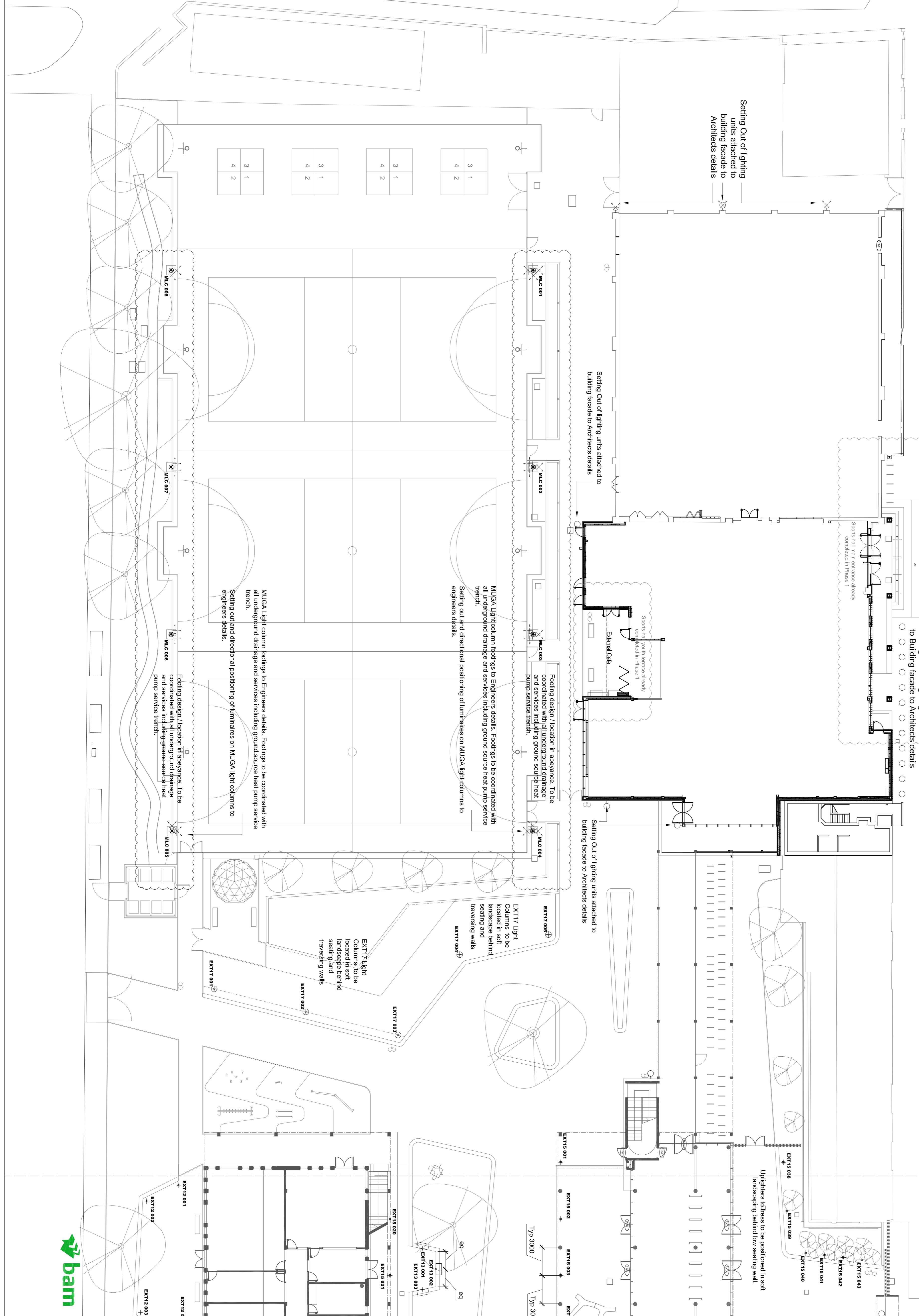


- NOTES:**
- Coordinates given to centre of lighting units / columns.
 - All recessed lighting within concrete flag paving to be aligned equally and neatly with paving coursing. Lighting units to be positioned so as to minimise cutting of paving units. Light units have been positioned so as to be spaced with 400 x 400 mm paving grid. Final position of units can be adjusted on site so that the fit neatly with paving coursing.
 - All EXT13 recessed lighting units to face of RC seating walls to be positioned at a consistent datum. Top of lighting units to be 100mm below top of concrete (not 100mm below top of timber seating).
 - MUGA = MUGA Lighting Column - Coordinates given to centre of column. RC footing to all light columns to engineers (EG details). All column footings located in soft landscape to be positioned below soft landscape.
 - Top of all light column heights to be at a consistent datum / level.
 - All footings to MUGA and column lighting to be coordinated with below ground drainage services including ground source heat pile services trench. Any classes to be checked and confirmed with design team.



- GENERAL NOTES:**
- ALL DIMENSIONS AND LEVELS SHALL BE CHECKED ON SITE PRIOR TO COMMENCEMENT OF WORK.
 - ALL LANDSCAPE DRAWINGS TO BE READ IN CONJUNCTION WITH ALL RELEVANT ENGINEERS AND ARCHITECTS DRAWINGS AND ALL DRAWINGS TO BE READ IN CONJUNCTION WITH THE LANDSCAPE SPECIFICATION.
 - ANY CONCERNING THE DRAWINGS SHOULD BE REFERRED TO THE CAMDEN/ARL/EG.
 - ALL DIMENSIONS IN MILLIMETRES UNLESS NOTED OTHERWISE.
 - EXISTING SERVICE ALIGNMENTS SHALL BE CHECKED ON SITE BY THE CONSULTANT PRIOR TO COMMENCEMENT OF WORK.
 - DO NOT SCALE OFF THIS DRAWING.
 - EXISTING SERVICE ALIGNMENTS SHALL BE CHECKED ON SITE BY THE CONSULTANT PRIOR TO COMMENCEMENT OF WORK.
 - EXISTING SERVICE ALIGNMENTS SHALL BE CHECKED ON SITE BY THE CONSULTANT PRIOR TO COMMENCEMENT OF WORK.

#	External Lighting Setting Out	Easting	Northing
EXT12 001	5296202452	183294454	183300785
EXT12 002	5295981003	183300785	183300785
EXT12 004	5295981444	183300785	183300785
EXT12 005	5295981444	183300785	183300785
EXT12 006	5295981444	183300785	183300785
EXT12 007	5295981444	183300785	183300785
EXT12 008	5295981444	183300785	183300785
EXT12 009	5295981444	183300785	183300785
EXT12 010	5295981444	183300785	183300785
EXT12 011	5295981444	183300785	183300785
EXT12 012	5295981444	183300785	183300785
EXT12 013	5295981444	183300785	183300785
EXT12 014	5295981444	183300785	183300785
EXT12 015	5295981444	183300785	183300785
EXT12 016	5295981444	183300785	183300785
EXT12 017	5295981444	183300785	183300785
EXT12 018	5295981444	183300785	183300785
EXT12 019	5295981444	183300785	183300785
EXT12 020	5295981444	183300785	183300785
EXT12 021	5295981444	183300785	183300785
EXT12 022	5295981444	183300785	183300785
EXT12 023	5295981444	183300785	183300785
EXT12 024	5295981444	183300785	183300785
EXT12 025	5295981444	183300785	183300785
EXT12 026	5295981444	183300785	183300785
EXT12 027	5295981444	183300785	183300785
EXT12 028	5295981444	183300785	183300785
EXT12 029	5295981444	183300785	183300785
EXT12 030	5295981444	183300785	183300785
EXT12 031	5295981444	183300785	183300785
EXT12 032	5295981444	183300785	183300785
EXT12 033	5295981444	183300785	183300785
EXT12 034	5295981444	183300785	183300785
EXT12 035	5295981444	183300785	183300785
EXT12 036	5295981444	183300785	183300785
EXT12 037	5295981444	183300785	183300785
EXT12 038	5295981444	183300785	183300785
EXT12 039	5295981444	183300785	183300785
EXT12 040	5295981444	183300785	183300785
EXT12 041	5295981444	183300785	183300785
EXT12 042	5295981444	183300785	183300785
EXT12 043	5295981444	183300785	183300785
EXT12 044	5295981444	183300785	183300785
EXT12 045	5295981444	183300785	183300785
EXT12 046	5295981444	183300785	183300785
EXT12 047	5295981444	183300785	183300785
EXT12 048	5295981444	183300785	183300785
EXT12 049	5295981444	183300785	183300785
EXT12 050	5295981444	183300785	183300785
EXT12 051	5295981444	183300785	183300785
EXT12 052	5295981444	183300785	183300785
EXT12 053	5295981444	183300785	183300785
EXT12 054	5295981444	183300785	183300785
EXT12 055	5295981444	183300785	183300785
EXT12 056	5295981444	183300785	183300785
EXT12 057	5295981444	183300785	183300785
EXT12 058	5295981444	183300785	183300785
EXT12 059	5295981444	183300785	183300785
EXT12 060	5295981444	183300785	183300785
EXT12 061	5295981444	183300785	183300785
EXT12 062	5295981444	183300785	183300785
EXT12 063	5295981444	183300785	183300785
EXT12 064	5295981444	183300785	183300785
EXT12 065	5295981444	183300785	183300785
EXT12 066	5295981444	183300785	183300785
EXT12 067	5295981444	183300785	183300785
EXT12 068	5295981444	183300785	183300785
EXT12 069	5295981444	183300785	183300785
EXT12 070	5295981444	183300785	183300785
EXT12 071	5295981444	183300785	183300785
EXT12 072	5295981444	183300785	183300785
EXT12 073	5295981444	183300785	183300785
EXT12 074	5295981444	183300785	183300785
EXT12 075	5295981444	183300785	183300785
EXT12 076	5295981444	183300785	183300785
EXT12 077	5295981444	183300785	183300785
EXT12 078	5295981444	183300785	183300785
EXT12 079	5295981444	183300785	183300785
EXT12 080	5295981444	183300785	183300785
EXT12 081	5295981444	183300785	183300785
EXT12 082	5295981444	183300785	183300785
EXT12 083	5295981444	183300785	183300785
EXT12 084	5295981444	183300785	183300785
EXT12 085	5295981444	183300785	183300785
EXT12 086	5295981444	183300785	183300785
EXT12 087	5295981444	183300785	183300785
EXT12 088	5295981444	183300785	183300785
EXT12 089	5295981444	183300785	183300785
EXT12 090	5295981444	183300785	183300785
EXT12 091	5295981444	183300785	183300785
EXT12 092	5295981444	183300785	183300785
EXT12 093	5295981444	183300785	183300785
EXT12 094	5295981444	183300785	183300785
EXT12 095	5295981444	183300785	183300785
EXT12 096	5295981444	183300785	183300785
EXT12 097	5295981444	183300785	183300785
EXT12 098	5295981444	183300785	183300785
EXT12 099	5295981444	183300785	183300785
EXT12 100	5295981444	183300785	183300785

A
 Rev 03_12/2013 Issued for Construction
 Project CAMDEN BSF SOUTH CAMDEN COMMUNITY SCHOOL
 Title LANDSCAPE EXTERNAL LIGHTING SETTING OUT 1 of 2
 Date 06.08.2010
 Scale 1:200 @ A1