

- Ceiling Types:**
- Type 1. K4011 - Kitchen - Hygienic mineral fibre lay-in tiles with integrated service installations
 - Type 2. K4012 - Suspended mineral fibre tile
 - Type 3A. K4014 - Suspended Bulkhead with demountable high density glass wool acoustic tiles and plasterboard edges (K1021). Contains integrated lighting, emergency lighting and sprinkler systems as required.
 - Type 3B. K4015 - Suspended Acoustic Panels
 - Type 4. M6010 A & J - Painted concrete soffit - White finish and/or clear concrete sealant as annotated (refer to finishes schedule). NOTE - Theatre concrete soffit to be "Blacked Out" - refer to Finishes Schedule
 - Type 5. K1020 - Moisture resistant suspended plasterboard ceiling (WC's & Wet Spaces)
 - Type 6A. K1023 - MEDBURN MF suspended plasterboard ceiling with access panels as required. Two layers 12.5mm Fireline with 75mm acoustic insulation quilt. Acoustic resilient suspended ceiling. Fire & Acoustic lining. All penetrations and perimeter to be fire & acoustically sealed.
 - Type 6B. K1023 - MEDBURN MF suspended plasterboard bulkhead ceiling. Built flush to window head soffit to provide clearance to windows. Bulkhead 400mm deep from finished wall face.
 - Type 6C. MEDBURN 15mm Fireline board mechanically fixed to underside of existing ceiling - typically in corridors with adjacent steels lined
 - Type 12. K1023 - Existing ceiling finish to be removed and to be replaced with plasterboard ceiling and layer of insulation that follows shape of rafters
 - Type 7. Existing concrete soffit. M6010 A & J - Painted concrete soffit - White finish and/or clear concrete sealant as annotated

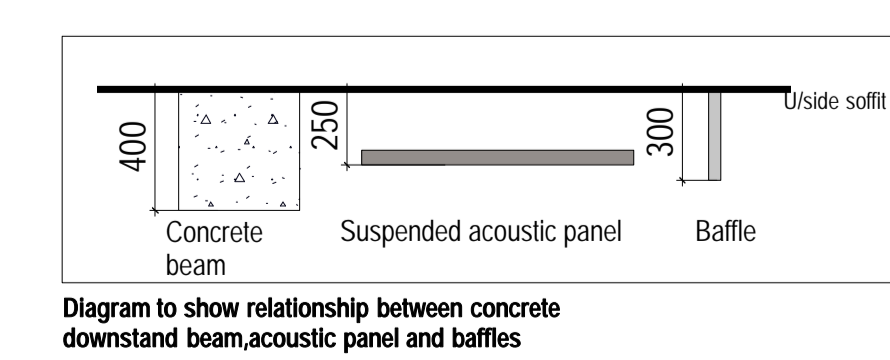
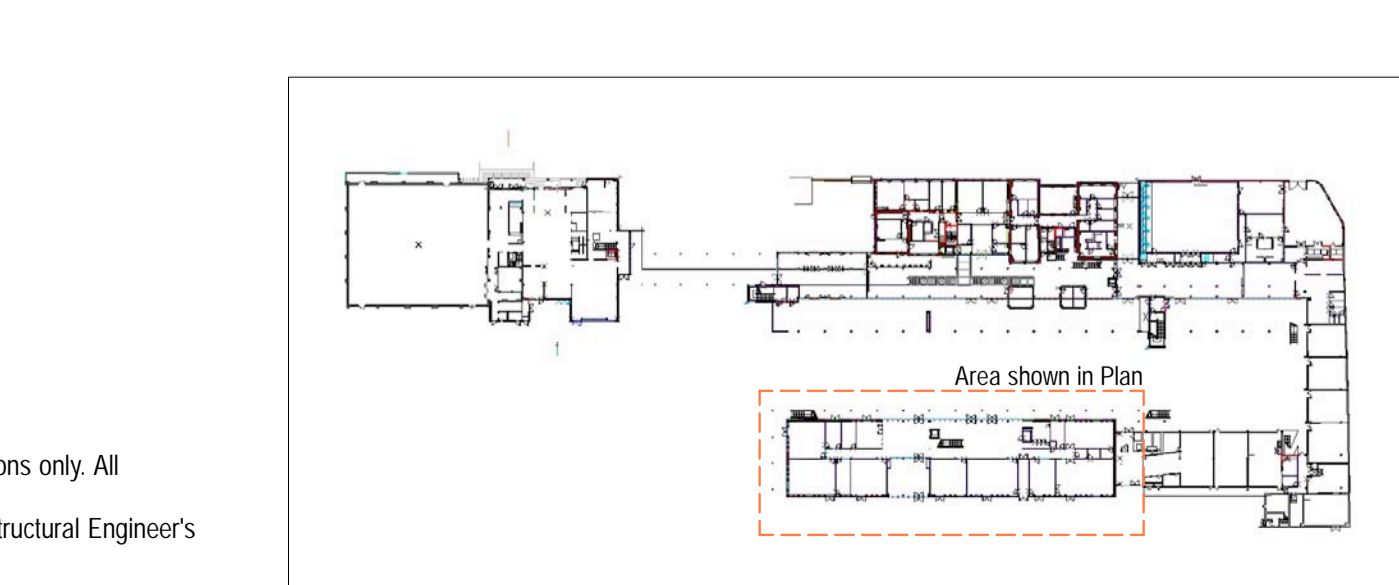
- Type 8. H2170 - Timber Lining to External Soffit
- Type 10. K1026 - Perforated Plasterboard (Quattro 41) - high acoustic absorbance
- Type 11. K1311 - Suspended acoustic panel Size: 1200x300x40
- Type 13. H10 & H14 - Rooflight - refer to SCCS_ARCH_1406
- Type 14. K1028 - Perforated Plasterboard (Rigitone 10/23) Suspended Ceiling - and plasterboard edges / margin (K1021)
- Type 15. K1020 - Plain Plasterboard Suspended Ceiling (K1021 - Plain Plasterboard margins)
- Type 16. K4016 - Suspended system with demountable high density glass wool acoustic tiles and plasterboard edges (K1021).
- Type 17. P1016 - Mineral fibre with a black tissue facing
- Type 18. M2014 - External Insulated Rendered Soffit
- Type 19. M2014 - External Rendered Uninsulated Soffit
- Type 20. K4017 - Suspended system with demountable acoustic tiles area high impact

- K1312 - Acoustic baffle panels
- Steel beam at ceiling level concealed within proprietary fire board system (K1035 or K1036)
- External Insulated Rendered Soffit M2014
- Painted underside of exposed profiled metal deck DARK GREY - RAL colour 7012
- NOTE: Science walkway soffit unpainted
- Painted underside of concrete planks WHITE
- Line of existing steel to be fire lined to 60 minutes integrity and insulation (Locations are indicative - to be checked on site)
- Access Panel - Structural Opening 455x455mm, Outside edge of frame 500x500mm
- Access Panel - Structural Opening 305x305mm, Outside edge of frame 350x350mm
- Sprinkler Head. Refer to H&K drawings for sprinkler information
- Lines of exposed sprinkler pipe. Setting out as shown on H&K drawings
- Smoke Sensor - Setting out shown above. Refer to Buro Hoppolds Services for specification / type
- PIR - Setting out shown above. Refer to Buro Hoppolds Services for specification / type
- Supply / Extract Ventilation - Setting out shown above. Refer to Buro Hoppolds Services for grille specification

- Light Types:**
- For light fitting colours the letter next to the light fitting symbol refers to B=Black, W=White, G=Grey
- H1 MIVP surface mounted light fitting (K1035 or K1036)
 - H2 MIVP surface mounted light fitting (twin)
 - K1 Suspended pendant light fitting
 - P Wall mounted adjustable uplighter - tbc
 - AD Acoustic baffle light fitting with integrated sprinklers and emergency lighting Whitecroft Life L in Ecophon Mastersolo
 - C IP rated recessed spot light
 - C* IP rated recessed spot lights with fire hood
 - G Ceiling and wall mounted light fitting TYPE G fitting tbc by BAM in specific locations
 - L1 Linear fluorescent batten light fitting
 - F1 Hygiene Whitecroft 'hygiene'
 - T Linear recessed luminaire (trough fitting)
 - S Batten luminaire behind pelmet
 - U Wall/ceiling mounted light fitting (Type G replacement)
 - X Over snooker table - Phase 1 only
 - W Ceiling mounted light fitting (Type G replacement)
 - R Iguzzini Full square B572
 - EX2 Casper Die Cast
 - EX11 Product tbc
 - EX19 Circular wall mounted light fitting - Ada range
 - E Emergency light fitting requirement

- General Notes**
- Drawing to be read with Buro Hoppold / Grattes layouts for - lighting, ventilation, security, fire, sprinklers, small power & data
- All levels to be checked on site
- All setting out to Architects approval
- Allow for ceiling access panels, as advised by Buro Hoppold. Setting out to be agreed with Architect.
- Service distribution contained within services void in ceiling build up, unless shown otherwise. All exposed conduit routes to be set out and agreed with Architect. ALL routes are to be equally spaced, minimise crossovers, NO cable baskets
- ALL service penetrations through ceiling to be fire & acoustically sealed. Access panels to also meet same requirements
- Ceiling voids exceeding 800mm clear require sprinkler void protection - reference to be made to Sprinkler specialist
- AD light rafts typically contain lighting / PIR / smoke / sprinklers - all service routes (cables, conduits, trunking, etc) to be run on top of raft and not ceiling mounted unless agreed with Architects. Sprinkler pipe distribution to be over raft unless agreed otherwise with Architect.
- Final Fire Exit Sign
 - Directional Fire Exit Sign to Final Exit
 - Static CCTV Camera
 - Pager system speaker recessed in ceiling
 - PA in circulation installed in ceiling

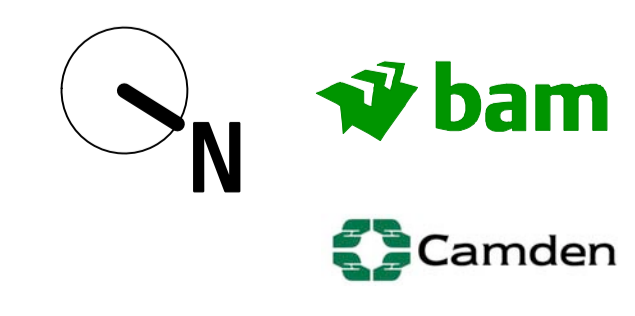
GRATTES TO ADVISE IF ANY REQUIRED ACCESS PANELS ARE ADDITIONAL PRIOR TO INSTALLATION



© This drawing is copyright.
Notes:
Do not scale from drawing. Use figured dimensions only. All dimensions to be checked on site.
All drawings should be read in conjunction with Structural Engineer's and Services Engineer's documentation.

rev	date	notes
F	20.03.14	For Construction & setting out - CAN 152
E	17.02.14	For Construction & setting out - Walkway external lighting & CCTV
D	28.10.13	For Construction & setting out - Type K light fitting level added
C	11.10.13	For Construction & setting out - see bubbles. Fitting type amended to align with VE change
B	29.08.13	For Construction & setting out - see bubbles
A	24.06.13	For Construction & setting out
--	30.11.12	For Construction & Procurement

project CAMDEN BSF_SOUTH CAMDEN COMMUNITY SCHOOL
title Science - First Floor Plan RCP 1of2
date 29.11.12 drawing no SCCS_ARCH_1782
scale 1:75 @ A1



ORIGINAL DRAWING SIZE B41 X 594mm