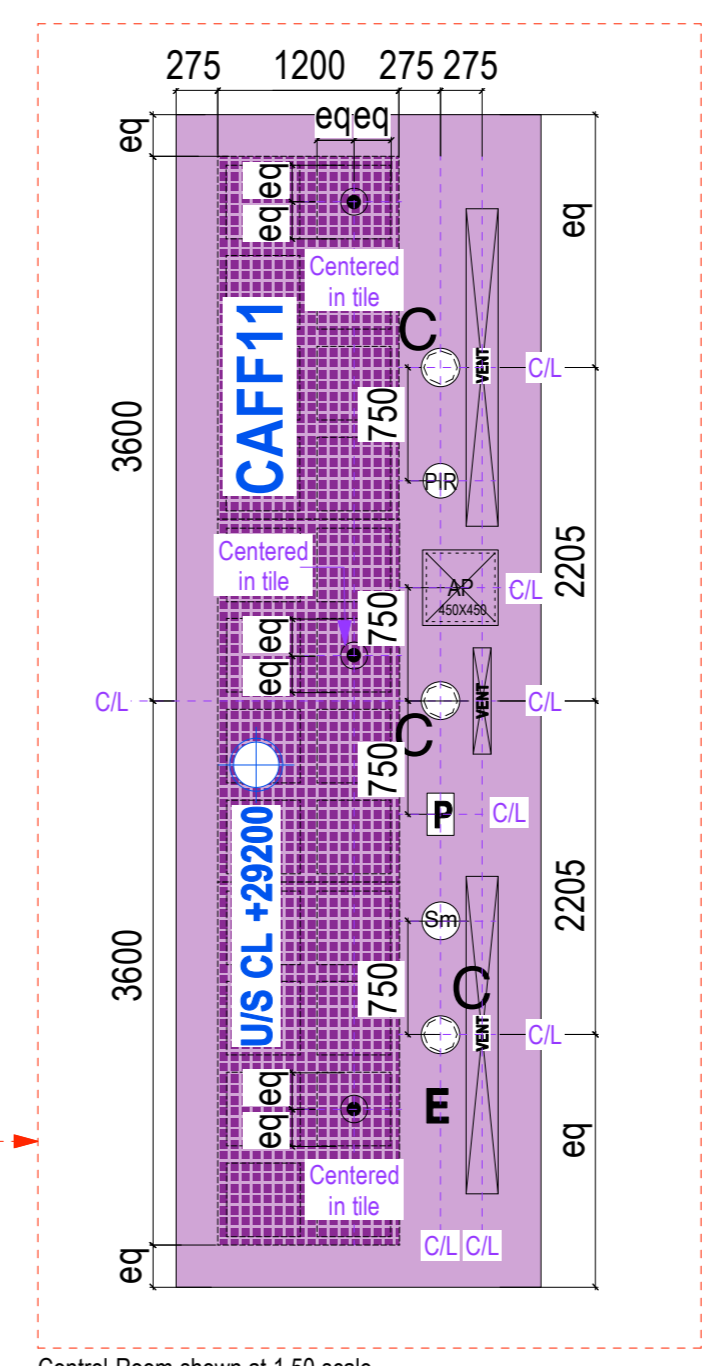


14 15 16 17 18 19 20 21

15A 16A 18A 19A 19B 20A



- Ceiling Types:**
- Type 1. K4011 - Kitchen - Hygienic mineral fibre lay-in-tiles with integrated service installations
  - Type 2. K4012 - Suspended mineral fibre tile
  - Type 3A. K4014 - Suspended ballasted with demountable high density glass wool acoustic tiles and plasterboard edges (K1021). Contains integrated lighting, emergency lighting and sprinkler systems as required.
  - Type 3B. K4015 - Suspended Acoustic Panels
  - Type 4. M0010 A & J - Painted concrete soffit - White finish and/or clear concrete sealant as specified (refer to finishes schedule)
  - Type 5. K1020 - Moisture resistant suspended plasterboard ceiling (WC's & WH Spaces)
  - Type 6A. K1023 - MEDURUM MF suspended plasterboard ceiling with access panels as required. Two layers 12.5mm Finesite with 75mm acoustic insulation quilt. Acoustic resistant suspended ceiling. Fire & Acoustic rating. All penetrations and perimeter to be fire & acoustically sealed.
  - Type 6B. K1023 - MEDURUM MF suspended plasterboard ballasted ceiling. Built flush to window head soffit to provide clearance to windows. Bulkhead 400mm deep from finished wall face.
  - Type 6C. MEDURUM 15mm Finesite board mechanically fixed to underside of existing ceiling - typically in corridors with adjacent steel lined
  - Type 12. K1023 - Existing ceiling finish to be removed and to be replaced with plasterboard ceiling and layer of insulation that follows shape of Phase 2 ONLY
  - Type 7. Existing concrete soffit. M0010 A & J - Painted concrete soffit - White finish and/or clear concrete sealant as specified.
  - Type 8. H2010 - Timber Lining to External Soffit
  - Type 10. K1026 - Perforated Plasterboard (Quattro 41) - high acoustic absorbance
  - Type 11. K1011 - Suspended acoustic panel Size: 1200x600x40
  - Type 13. H10 & H14 - Rooflight - refer to SCCS\_ARCH\_1406
  - Type 14. K1020 - Perforated Plasterboard (Rigstone 1023) Suspended Ceiling and plasterboard edges / margin (K1021)
  - Type 15. K1020 - Plain Plasterboard Suspended Ceiling (K1021 - Plain Plasterboard margins)
  - Type 16. K4016 - Suspended system with demountable high density glass wool acoustic tiles and plasterboard edges (K1021)
  - Type 17. P1016 - Mineral fibre with a black tissue facing
  - Type 18. M2014 - External Insulated Rendered Soffit
  - Type 19. M2014 - External Rendered Uninsulated Soffit
  - Type 20. K4017 - Suspended system with demountable acoustic tiles area high impact

- Light Types:**
- For light fitting colours the letter next to the light fitting symbol refer to B=Black, W=White, G=Grey
- |    |  |      |   |
|----|--|------|---|
| H1 | MVP surface mounted light fitting (K1020 or K1026)   | F1   | Hygiene Whitecoast Hygiene'                             |
| H2 | MVP surface mounted light fitting (twi)  | L    | Linear recessed luminaire (rough fitting)               |
| K1 | Suspended pendant light fitting  | S    | Batten luminaire behind panels                          |
| P  | Wall mounted adjustable uplighter - 1bc  | U    | Wall/ceiling mounted light fitting (Type G replacement) |
| AD | IP rated recessed spot light with integrated sprinklers and emergency lighting Whitecoast L&L in Exopron Mastersto | X    | Over snooker table - Phase 1 only                       |
| C  | IP rated recessed spot light with fire hood  | W    | Ceiling mounted light fitting (Type G replacement)      |
| C* | IP rated recessed spot lights with fire hood   | R    | Iguzzini Full square BS72                               |
| G  | Ceiling and wall mounted light fitting TYPE G fitting by B&B in specific locations                                 | EX2  | Caoper Die Cast   |
| L1 | Linear fluorescent batten light fitting  | EX11 | Product 1bc   |
|    |  | EX19 | Circular wall mounted light fitting - Ada range         |
|    |  | E    | Emergency light fitting requirement                     |

**General Notes**

Drawing to be read with Buro Happold / Grates layouts for - lighting, ventilation, security, fire, sprinklers, small power & data

All levels to be checked on site

All setting out to Architects approval

Allow for ceiling access panels, as advised by Buro Happold. Setting out to be agreed with Architect

Service distribution contained within services void in ceiling build up, unless shown otherwise. All exposed conduit routes to be set out and agreed with Architect. ALL routes are to be equally spaced, minimise crossovers, NO cable baskets

ALL service penetrations through ceiling to be fire & acoustically sealed. Access panels to also meet same requirements

Ceiling voids exceeding 800mm clear require sprinkler void protection - reference to be made to Sprinkler specialist

AD light rafts typically contain lighting (PRR / smoke) / sprinklers - all service cables, conduits, trunking, etc to be run on top of raft and not ceiling mounted unless agreed with Architect. Sprinkler pipe distribution to be over raft unless agreed otherwise with Architect.

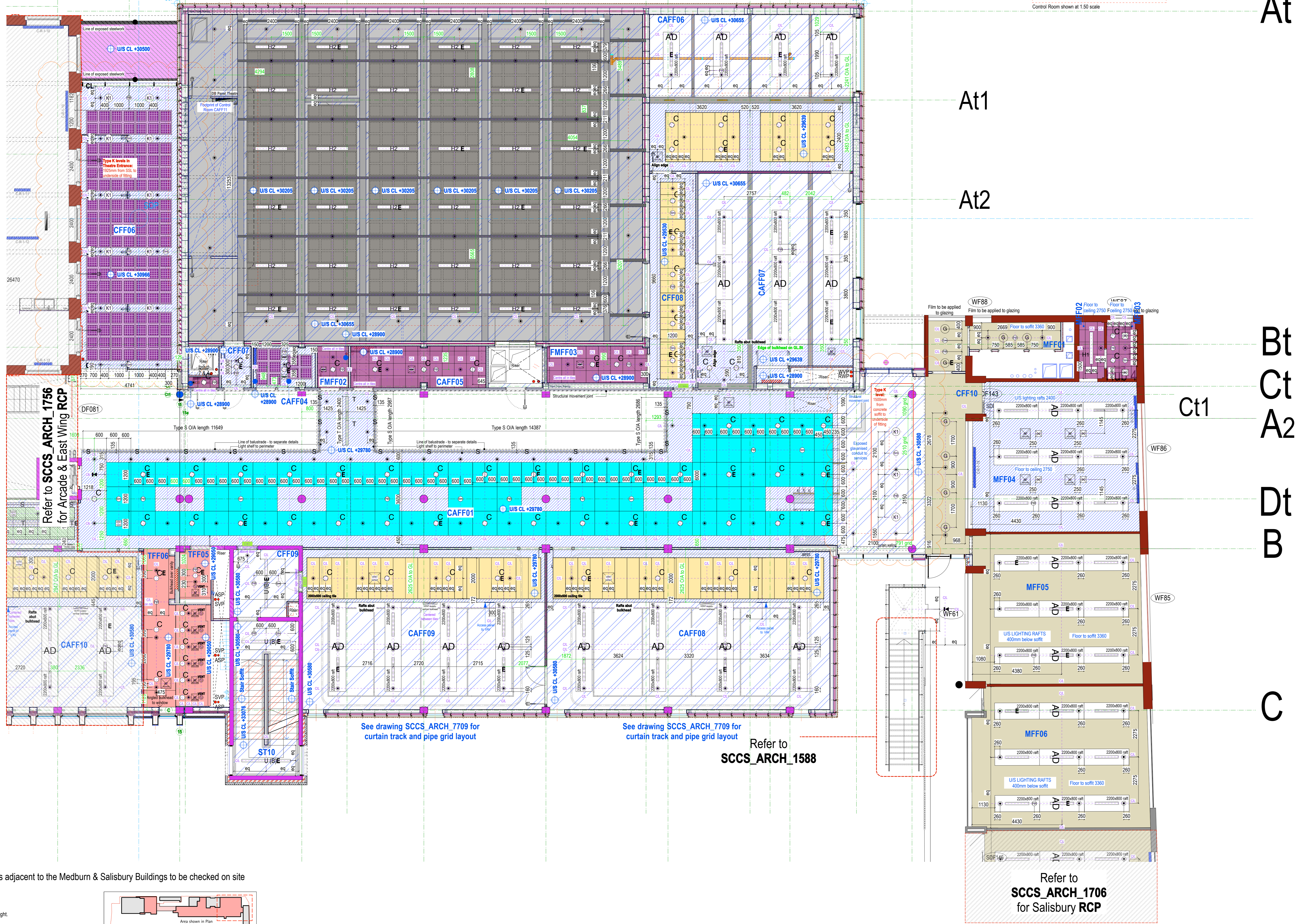
Final Fire Exit Sign

Directional Fire Exit Sign to Final Exit

Static CCTV Camera

Pager system speaker recessed in ceiling

PA in circulation installed in ceiling



At

At1

At2

Bt

Ct

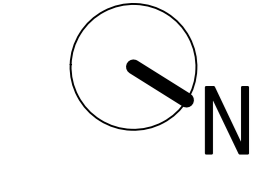
A2

Dt

B

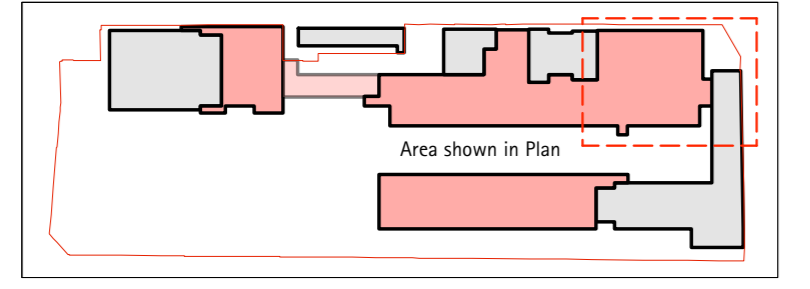
C

**GRATTES TO ADVISE IF ANY ADDITIONAL ACCESS PANELS ARE REQUIRED PRIOR TO INSTALLATION**



All Dimensions adjacent to the Medburn & Salisbury Buildings to be checked on site

© This drawing is copyright.  
 Notes:  
 Do not scale from drawing. Use figured dimensions only. All dimensions to be checked on site.  
 All drawings should be read in conjunction with Structural Engineers' and Services Engineers' documentation.



E	28.10.13	For Construction - Type K light fitting levels added
D	19.09.13	For Construction - see bubbles
C	13.09.13	For Construction - setting out added
B	25.04.13	For Construction - See bubbles
A	05.03.13	For Construction - See bubbles
	07.02.12	For Construction
rev	date	notes

**bam** **Camden**

PROJECT: CAMDEN BSF SOUTH CAMDEN COMMUNITY SCHOOL  
 SITE: Theatre / Arts Building - First Floor Plan RCP

DATE: 07/09/12 DRAWING NO: SCCS\_ARCH\_1741  
 SCALE: 1:75 @ A0

PROJECT: CAMDEN BSF SOUTH CAMDEN COMMUNITY SCHOOL  
 SITE: Theatre / Arts Building - First Floor Plan RCP