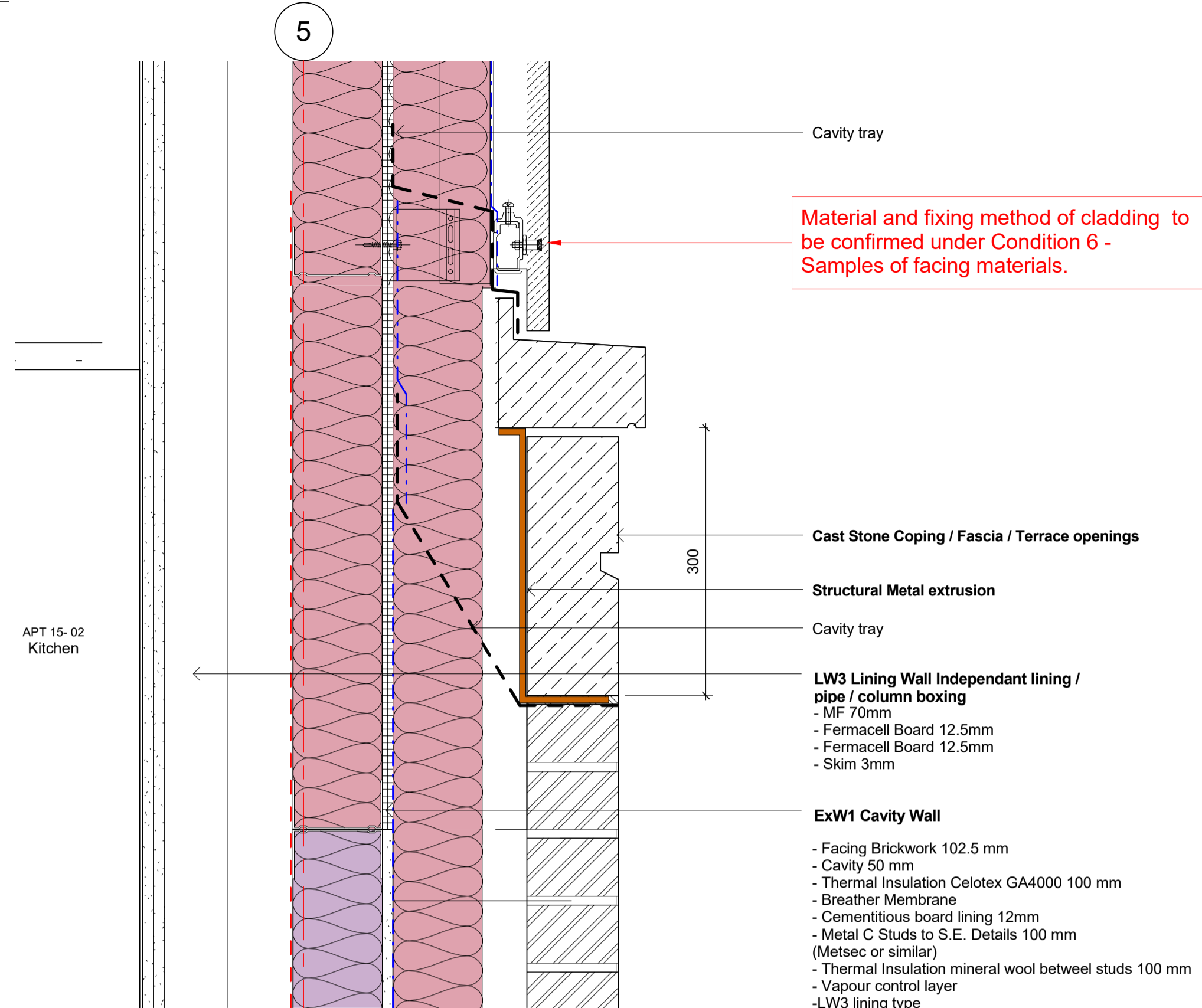
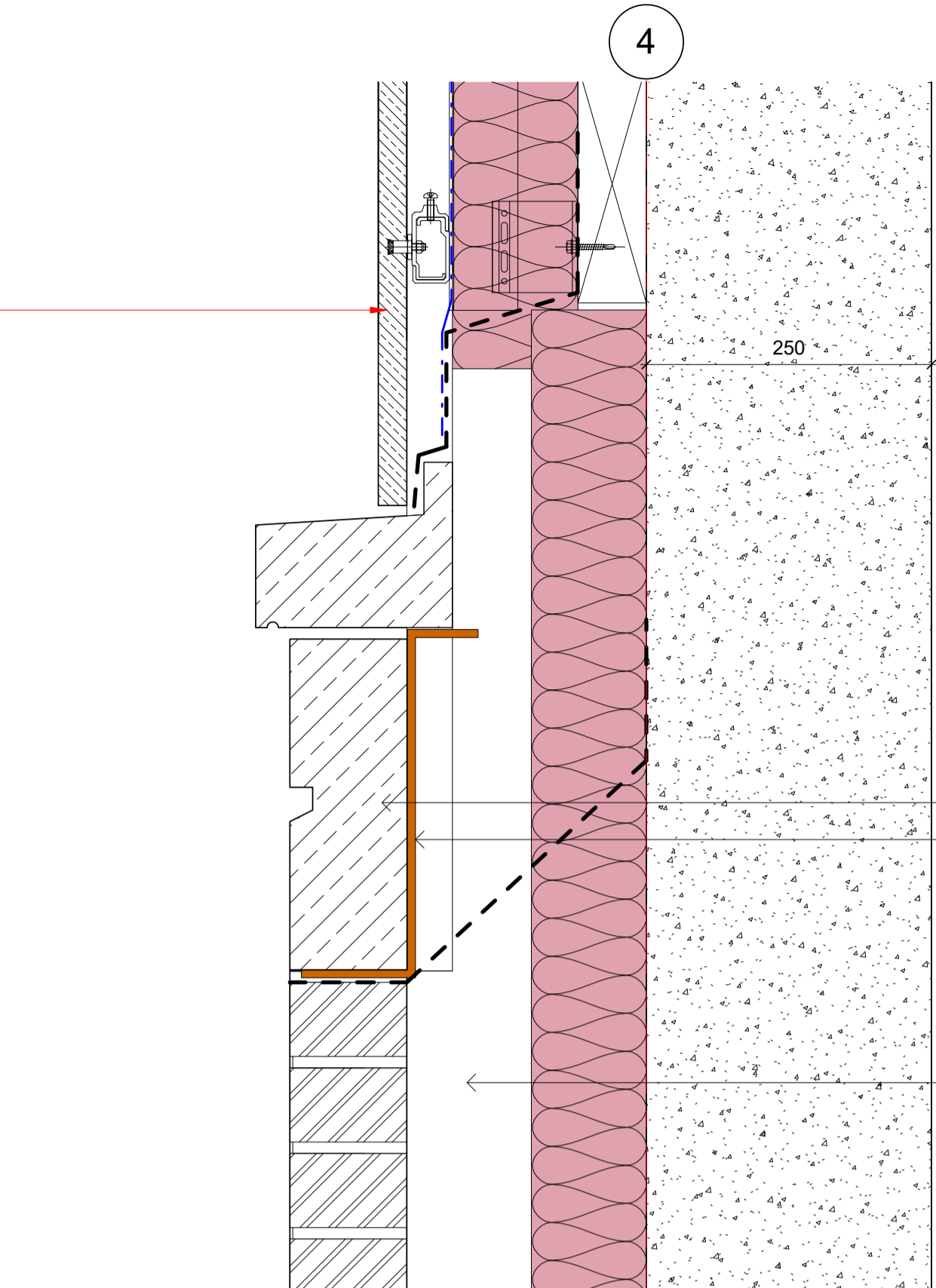


General notes:
 This drawing is copyright of KSR architects. This drawing must be read in conjunction with the Designer's Risk Assessment, specification and all other relevant documentation and drawings. KSR architects accept no liability for any expense, loss or damage of whatsoever nature and however arising from any variation made to this drawing or in the execution of the work to which it relates which has not been referred to them and their approval obtained.
 Do not scale from this drawing or the digital data, only figured dimensions are to be used. For Planning refer to linear scale. Check all dimensions on site prior to carrying out any works - advise of any discrepancy.

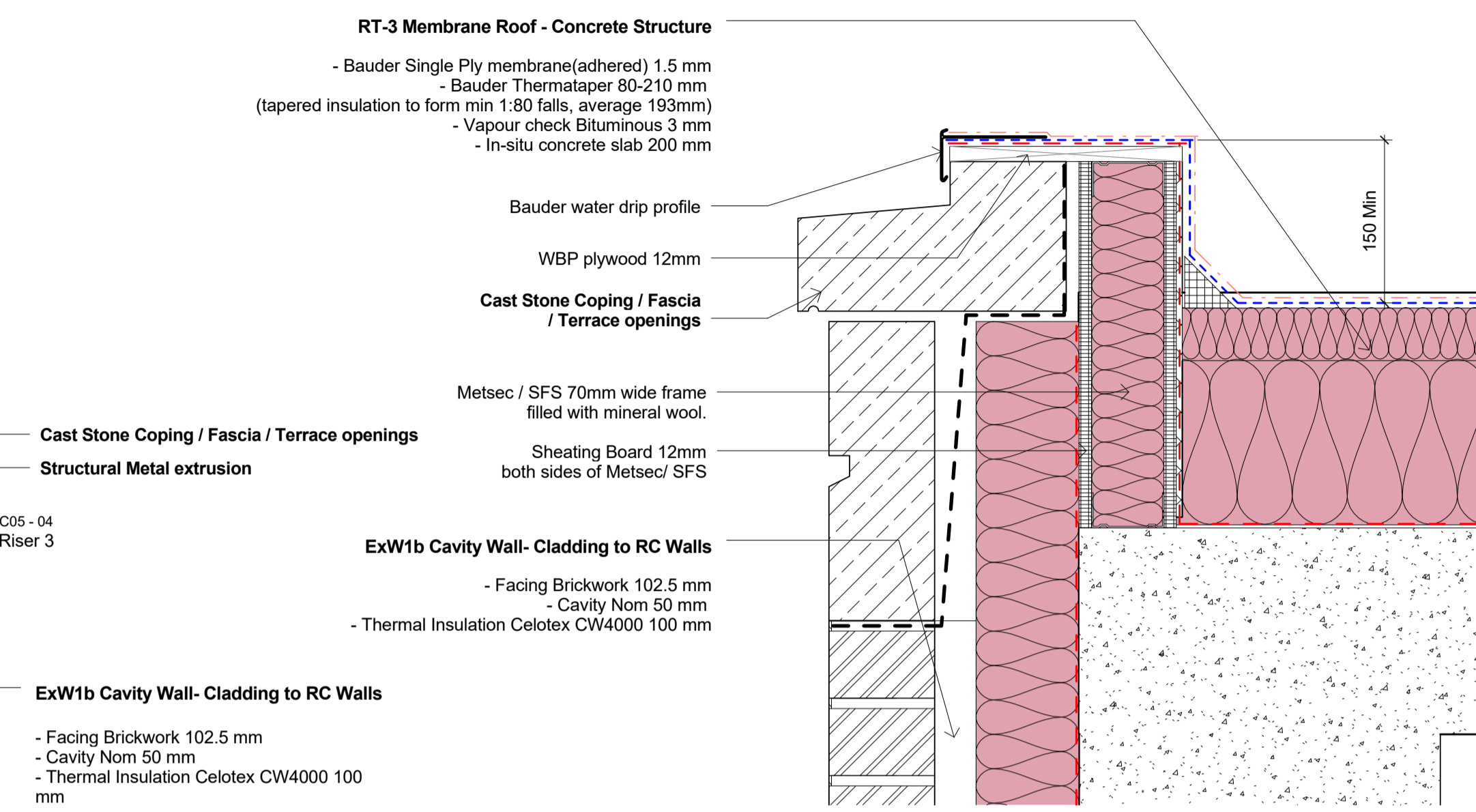
Notes/Legends



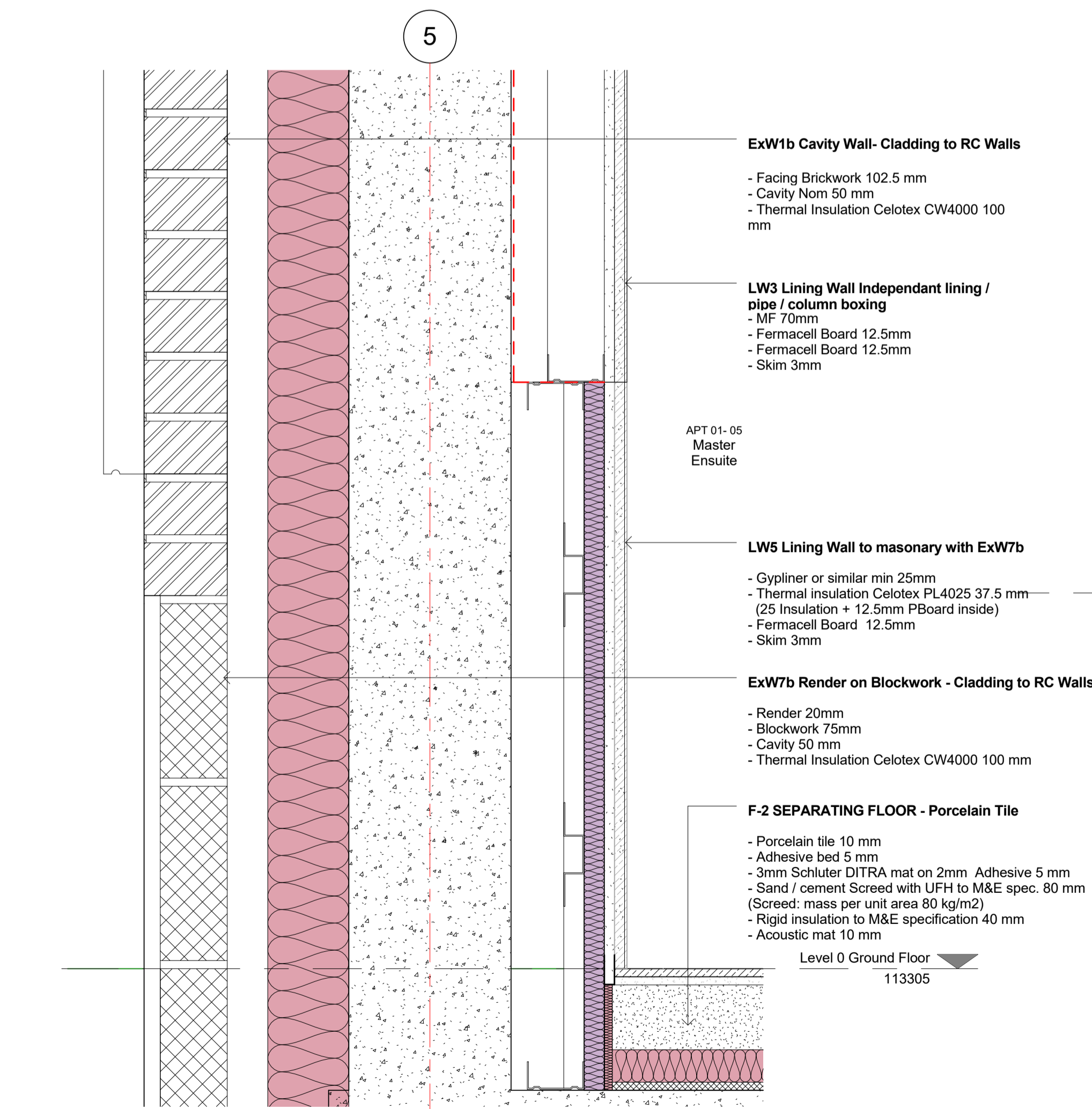
1 Brick - Stone - Slate Detail 1
 1 : 5



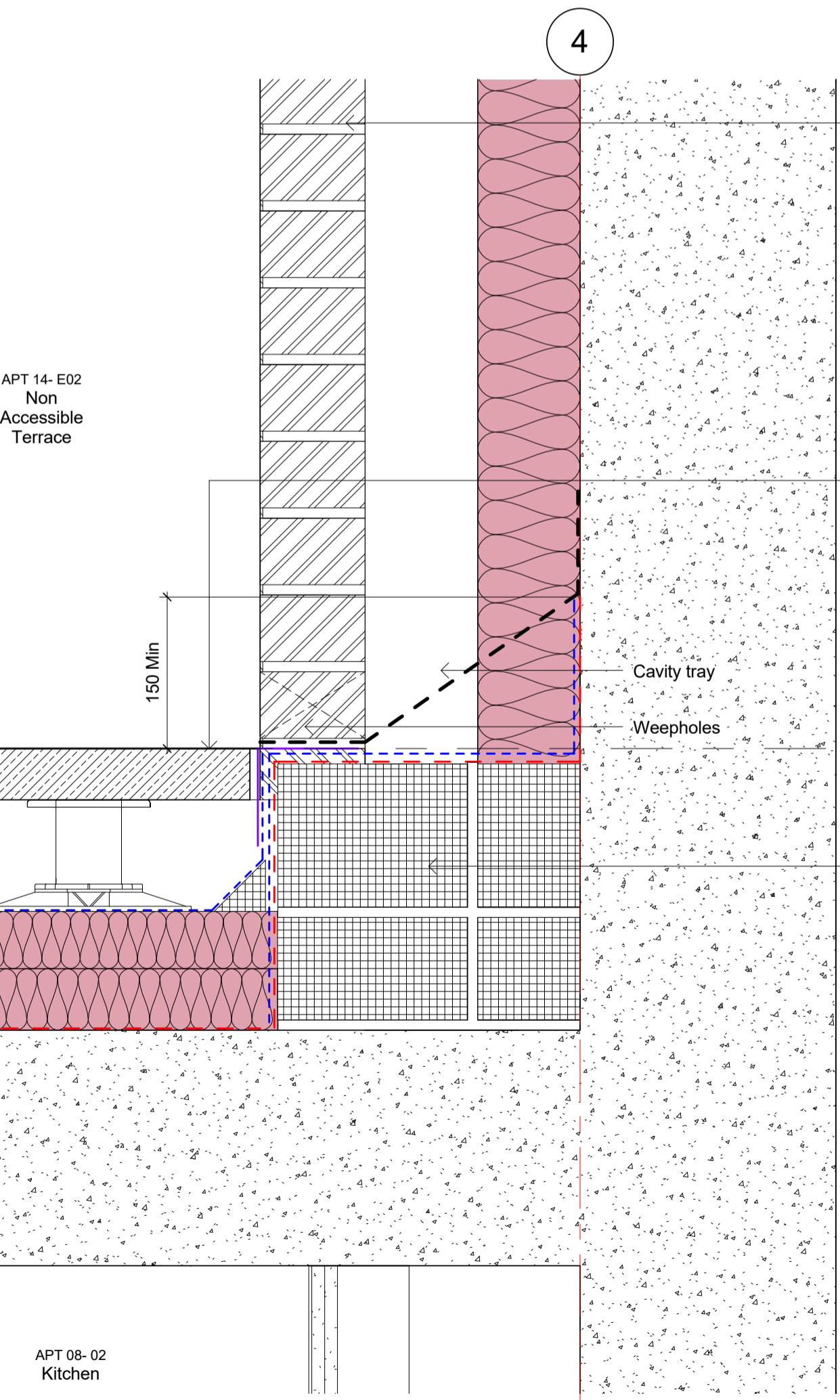
2 Brick - Stone - Slate Detail 2
 1 : 5



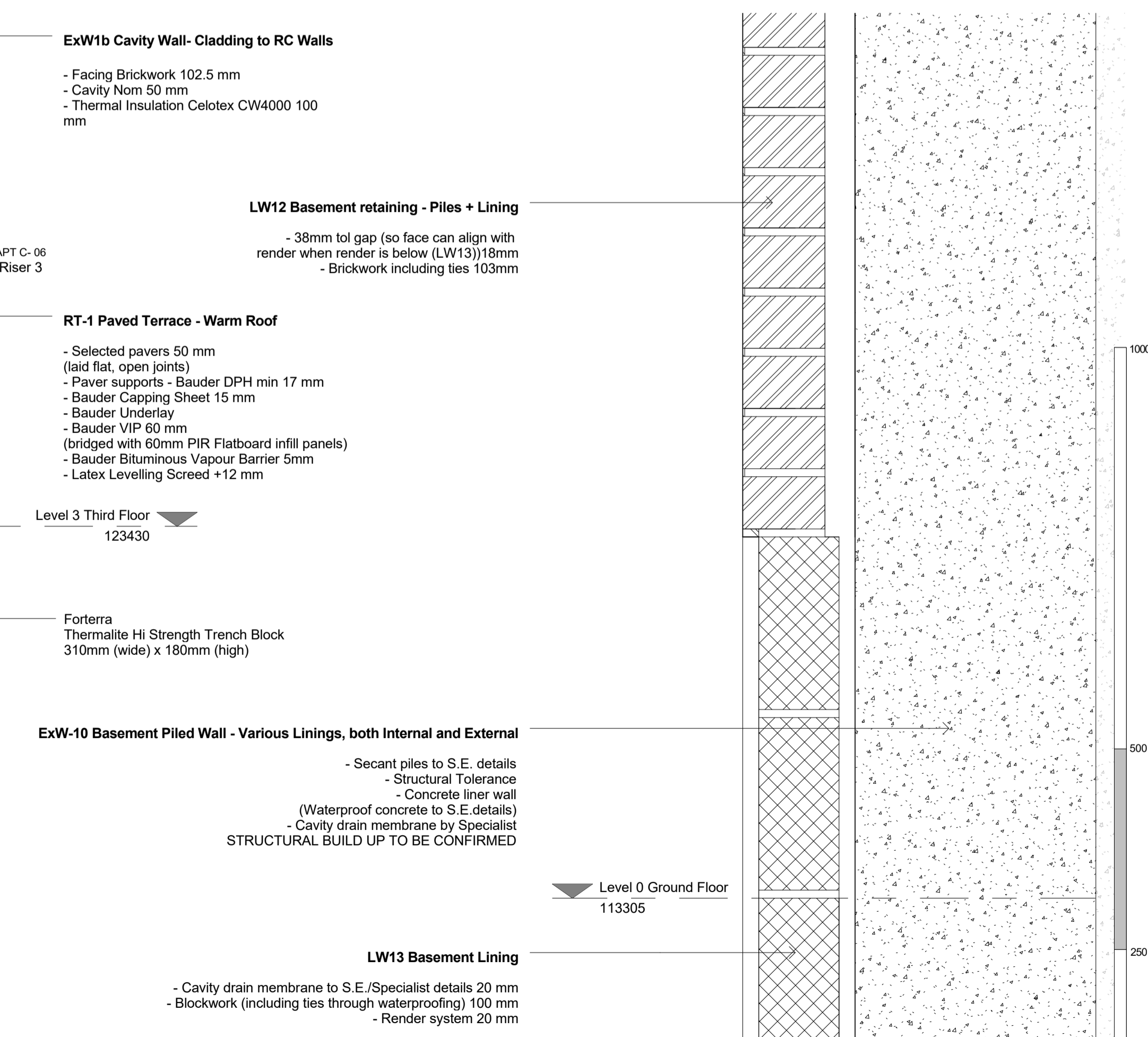
3 Brick - Stone - Lifshaft Head
 1 : 5



4 Brick - Render Detail 1
 1 : 5



5 Brick - Terrace Detail
 1 : 5



6 Brick - Render Detail 2
 1 : 5

| | | | |
|--|---------------------------------|-------------|----------------|
| B | Planning conditions | 28 Feb 19 | SAS |
| A | Drill Planning Details Sign-off | 09 Jan 19 | BT |
| Rev | Description | Date | Chd |
| © KSR architects | | | |
| Stamp | Planning | | |
| Key Plan | | | |
| <p>KSRARCHITECTS KSR Architects LLP 14 Greenland Street London NW8 0ND Email: info@ksrarchitects.com T: +44 (0)20 7692 5000 www.ksrarchitects.com</p> | | | |
| <p>Project: 29 NEW END</p> | | | |
| <p>Title: Brickwork Details</p> | | | |
| Date: | 12/21/18 | Drawn By: | Author |
| Scale: | 1:5 @ A1 | Status: | Planning |
| Project Ref: | NEN | Drawing No: | NEN - PL-4-616 |
| | | Reason: | B |