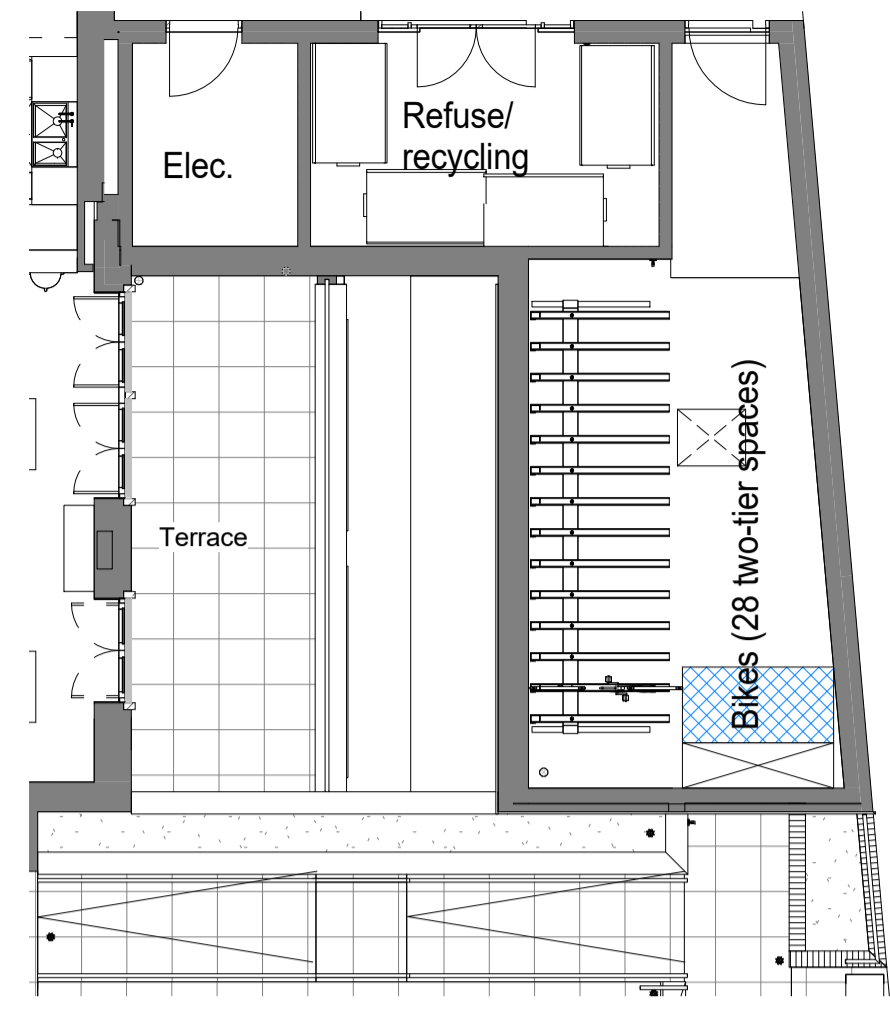
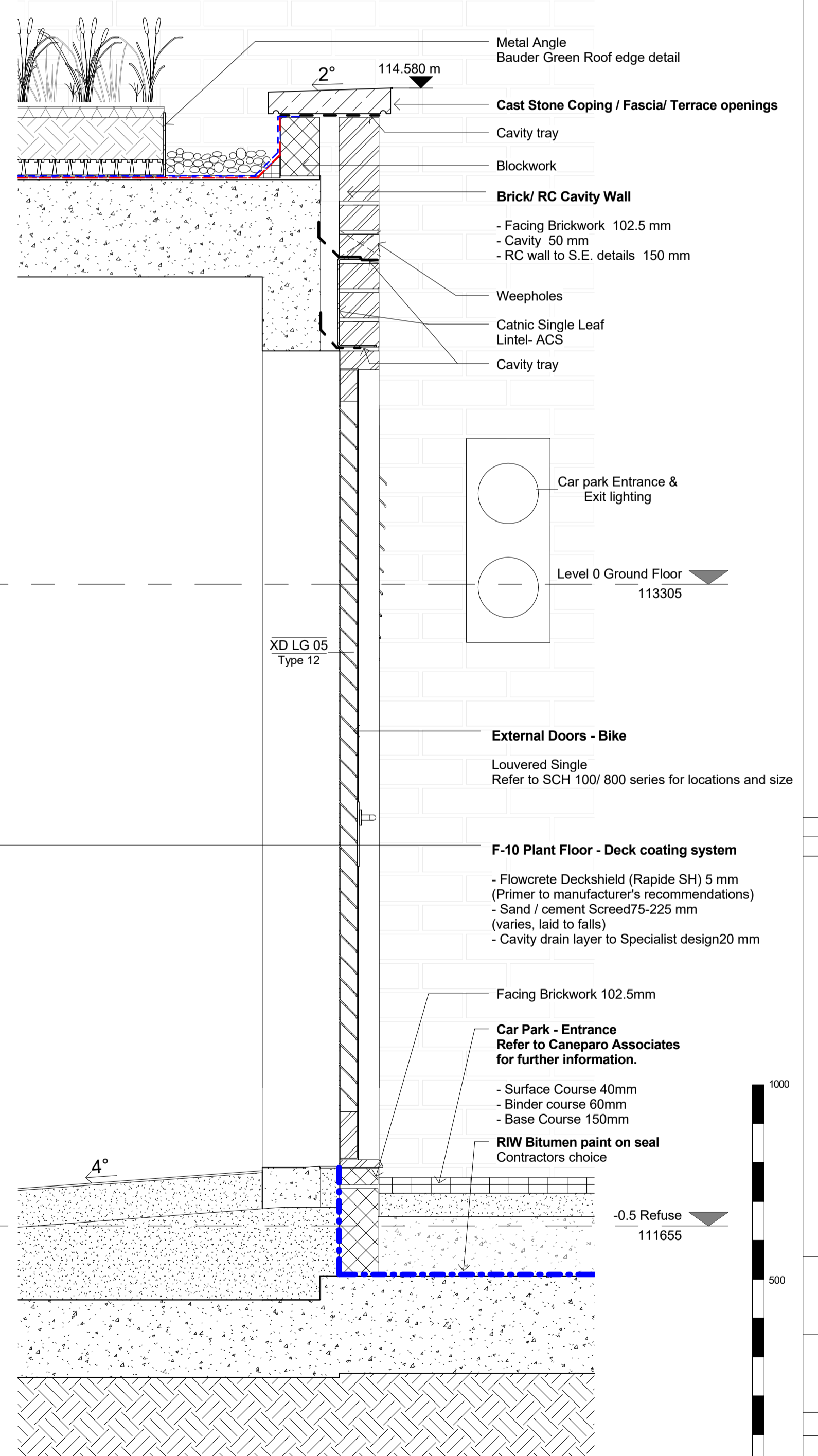
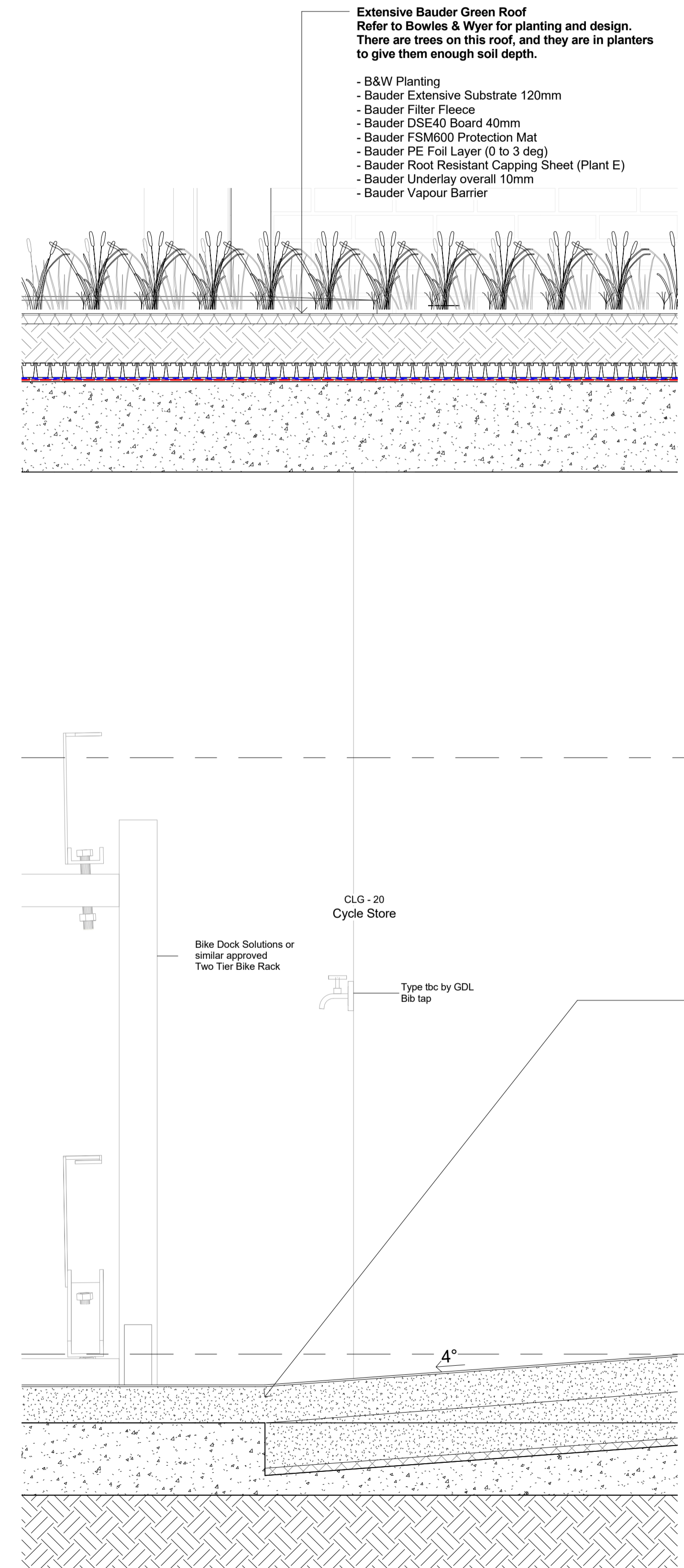
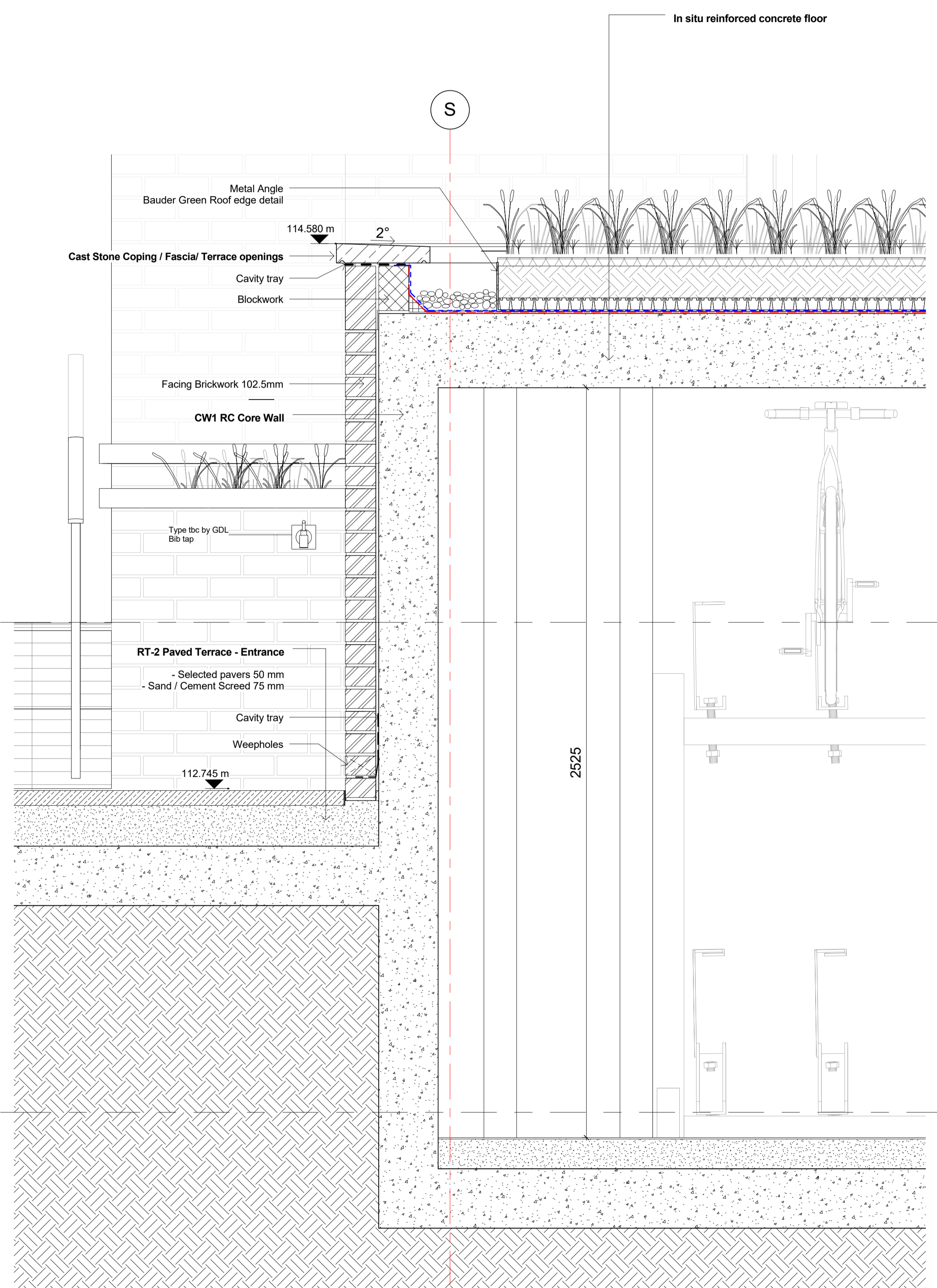


General notes:
 This drawing is copyright of KSR architects. This drawing must be read in conjunction with the Designer's Risk Assessment, specification and all other relevant documentation and drawings. KSR architects accept no liability for any expense, loss or damage of whatsoever nature and however arising from any variation made to this drawing or in the execution of the work to which it relates which has not been referred to them and their approval obtained.
 Do not scale from this drawing or the digital data, only figured dimensions are to be used. For Planning refer to linear scale. Check all dimensions on site prior to carrying out any works - advise of any discrepancy.

Notes/Legends



R Level 0 - Cycle Store Plan
 1: 100



1 CYCLE STORE
 1: 10

B	Planning conditions	28 Feb 19	SAS
A	Draft Planning Details, Sign-off	09 Jan 19	JB
Rev	Description	Date	Chk

© KSR architects
 Stamp
 Planning
 Key Plan

KSRARCHITECTS
 KSR Architects LLP
 14 Greenland Street
 London NW10 0ND
 Email: info@ksrarchitects.com
 Tel: +44 (0)20 7692 5000
 www.ksrarchitects.com

Project:
29 NEW END
 Title:
Cycle Store

Date:	12/21/18	Drawn By:	Author	Checked:	Checked
Scale:	1:10 @ A1	120@A3	Status:	Planning	
Project Ref:	NEN	Drawing No:	NEN - PL-4-614	Revision:	B