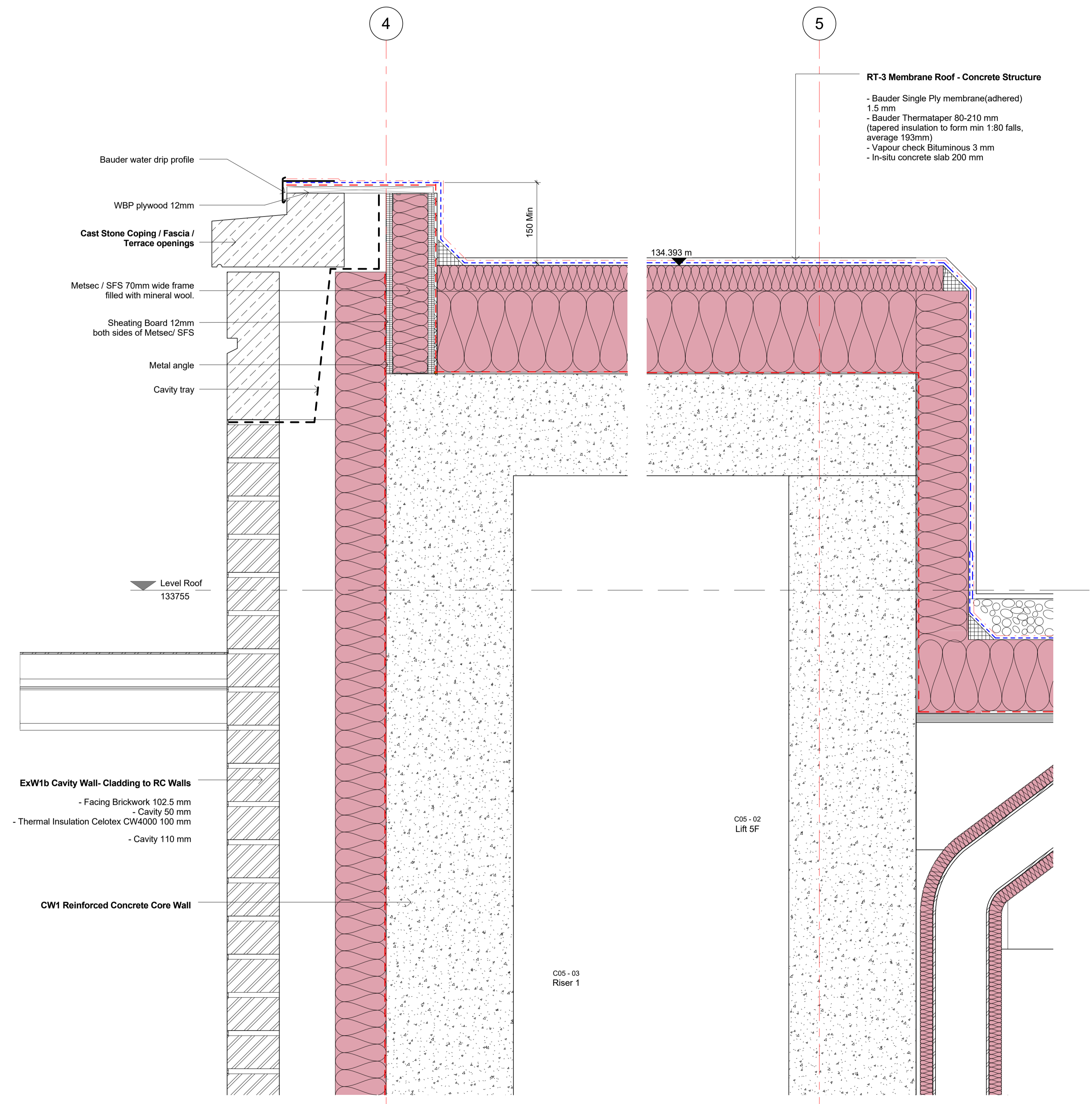
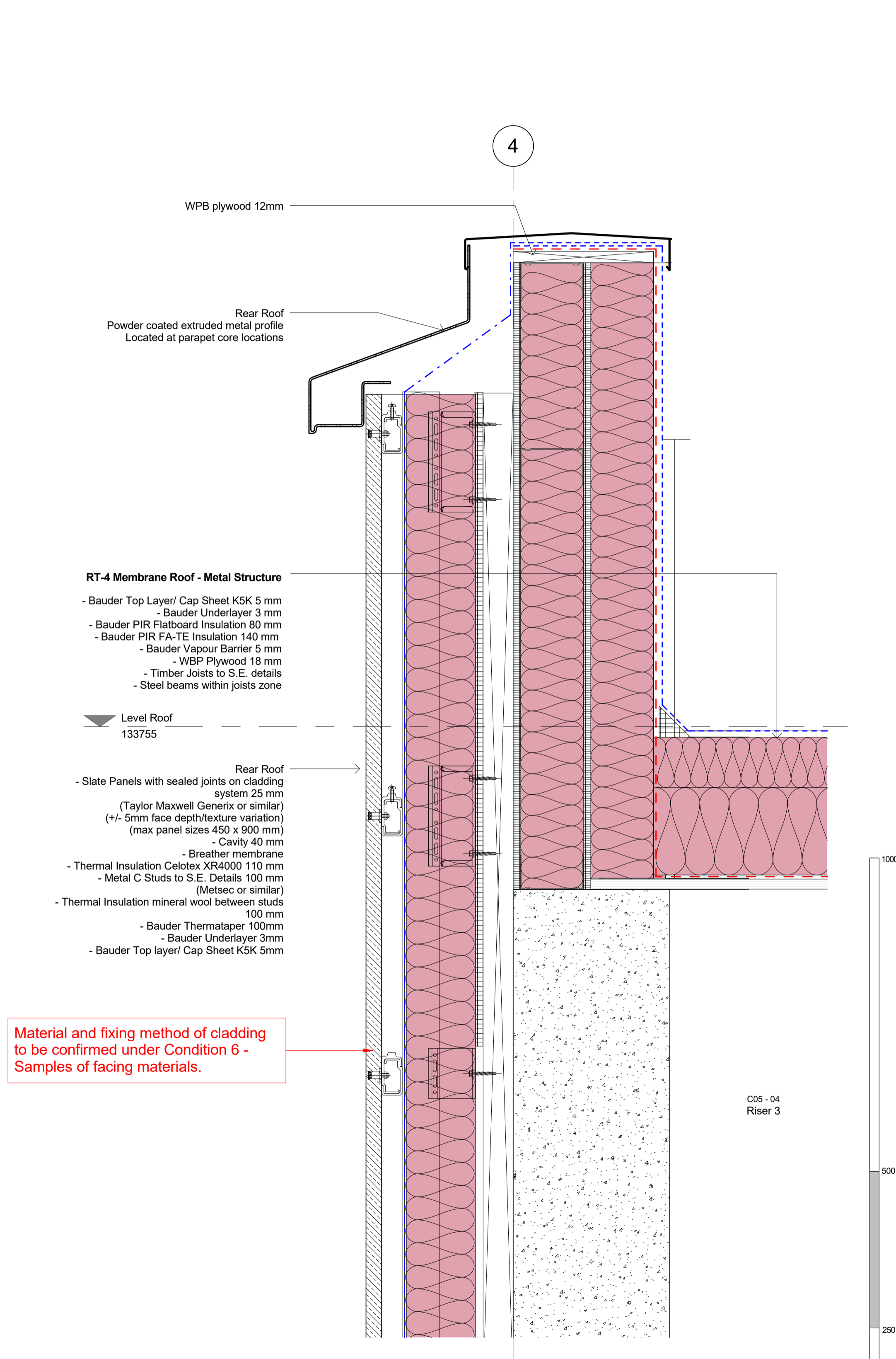


General notes:
 This drawing is copyright of KSR architects. This drawing must be read in conjunction with the Designer's Risk Assessment, specification and all other relevant documentation and drawings. KSR architects accept no liability for any expense, loss or damage of whatsoever nature and however arising from any variation made to this drawing or in the execution of the work to which it relates which has not been referred to them and their approval obtained.
 Do not scale from this drawing or the digital data, only figured dimensions are to be used. For Planning refer to linear scale. Check all dimensions on site prior to carrying out any works - advise of any discrepancy.

Notes/Legends



1 PARAPET - LIFT OVERRUN - DRAINAGE DETAIL
 1 : 5



2 FACADE DETAIL
 1 : 5

1000
500
250
0 mm

B	Planning conditions	28 Feb 19	SAS
A	Detail Planning Details Sign-off	09 Jan 19	JB
Rev	Description	Date	Chd
© KSR architects			
Stamp			
Planning			
Key/Plan			
KSRARCHITECTS			
KSR Architects LLP 14 Greenland Street London NW10 0ND t: +44 (0)20 7692 5000 e: mail@ksrarchitects.com www.ksrarchitects.com			
Project 29 NEW END			
Title Typical Roof Details 1			
Date:	12/21/18	Drawn By:	Autho
Scale:	1:5 @ A1	110/GJ	Status: Planning
Project Ref:	NEN	Drawing No:	NEN - PL-4-310.1
		Revision:	B