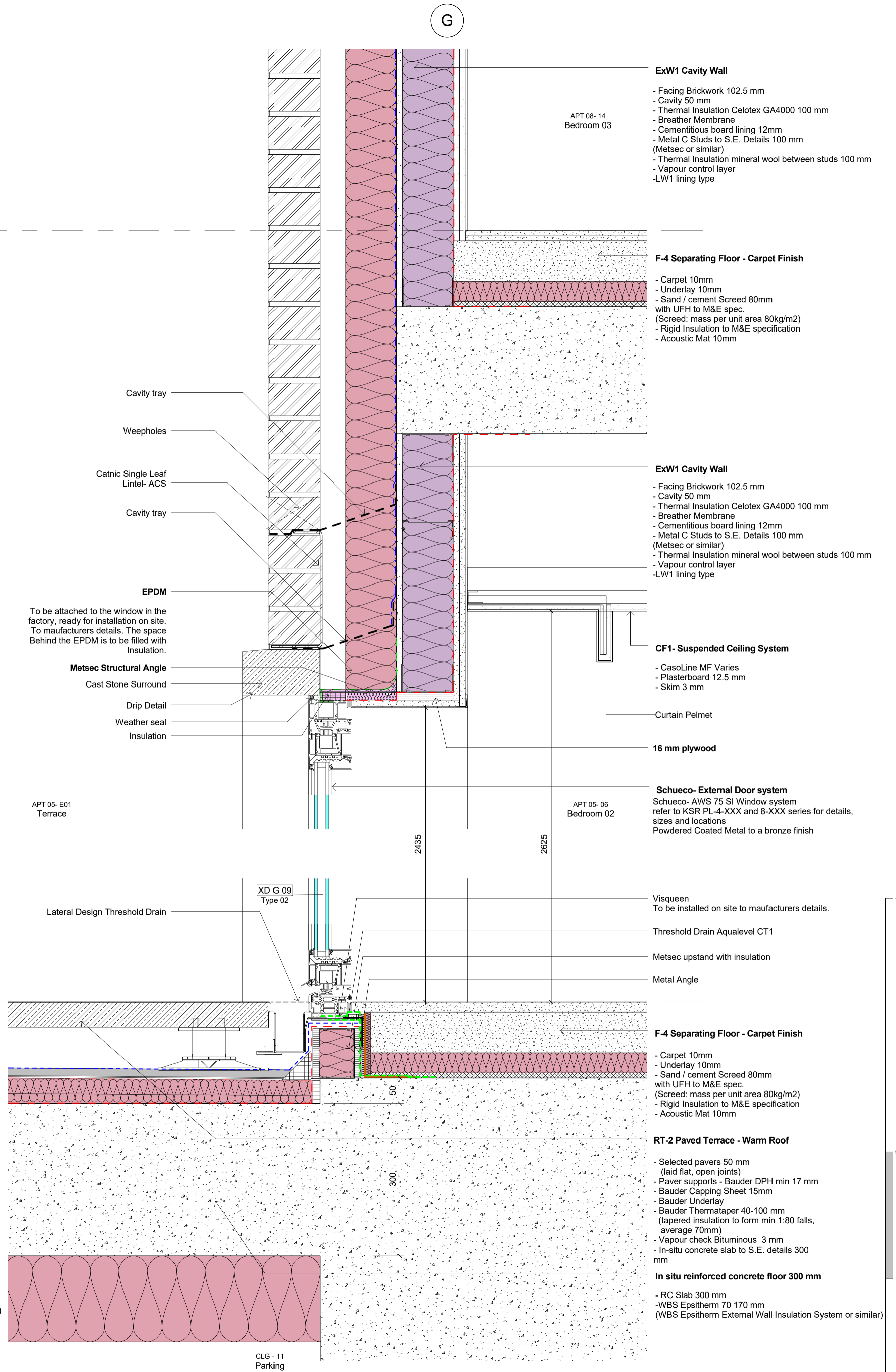


1 Sliding door detail
1 : 5



2 Hinged door detail
1 : 5

General notes:
This drawing is copyright of KSR architects. This drawing must be read in conjunction with the Designer's Risk Assessment, specification and all other relevant documentation and drawings. KSR architects accept no liability for any expense, loss or damage of whatsoever nature and however arising from any variation made to this drawing or in the execution of the work to which it relates which has not been referred to them and their approval obtained. Do not scale from this drawing or the digital data, only figured dimensions are to be used. For Planning refer to linear scale. Check all dimensions on site prior to carrying out any works - advise of any discrepancy

Notes/Legends

B	Planning conditions	28 Feb 19	SAS
A	Detail Planning Details, Sign-off	09 Jan 19	BT
Rev	Description	Date	Chkd

© KSR architects
Stamp
Planning

Key Plan
F-4 Separating Floor - Carpet Finish
- Carpet 10mm
- Underlay 10mm
- Sand / cement Screed 80mm with UFH & M&E spec. (Screed: mass per unit area 80kg/m²)
- Rigid insulation to M&E specification
- Acoustic Mat 10mm

KSRARCHITECTS
KSR Architects LLP
14 Greenland Street
London NW1 0ND
T: +44 (0)20 7692 5000
E: mail@ksrarchitects.com
www.ksrarchitects.com

Project
29 NEW END

Title
Typical Window Details 5

Date:	12/21/18	Drawn By:	Author	Checked:	Checked
Scale:	1:5 @ A1	110/00	Status:	Planning	
Project Ref:	NEN	Drawing No:	NEN - PL-4-416	Revision:	B

