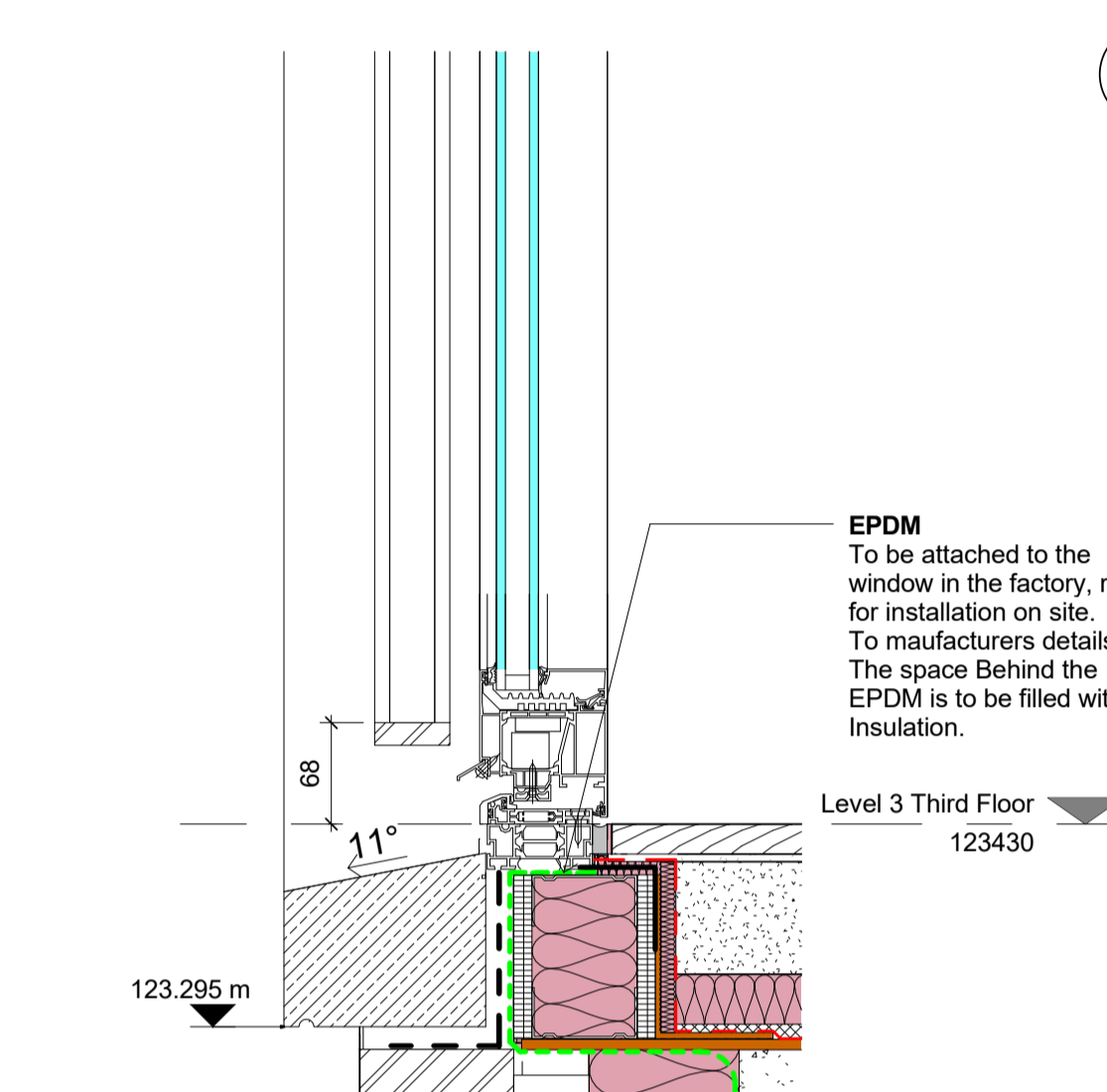
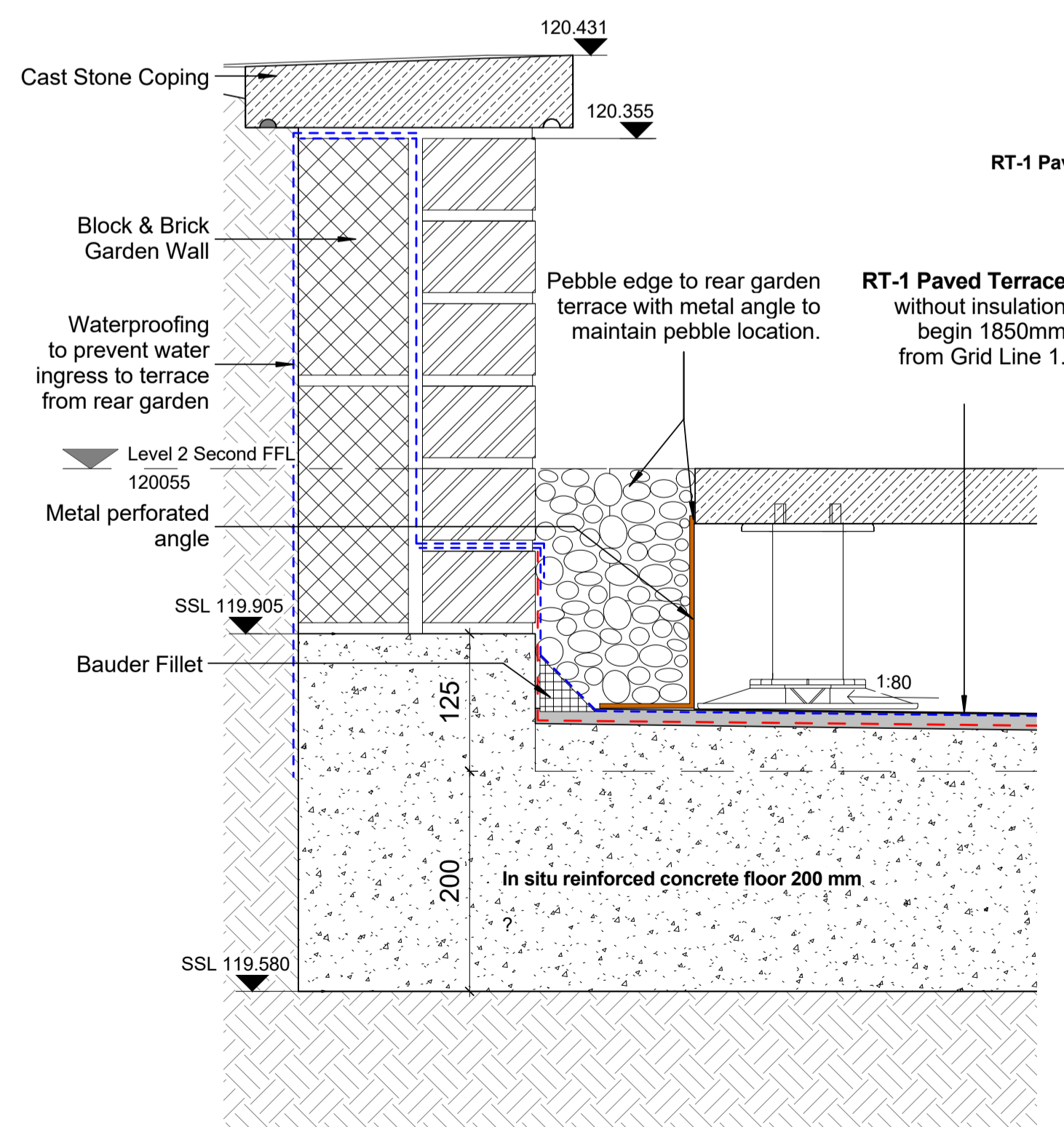


DIAGRAM SECTION C - NORTH
1:50

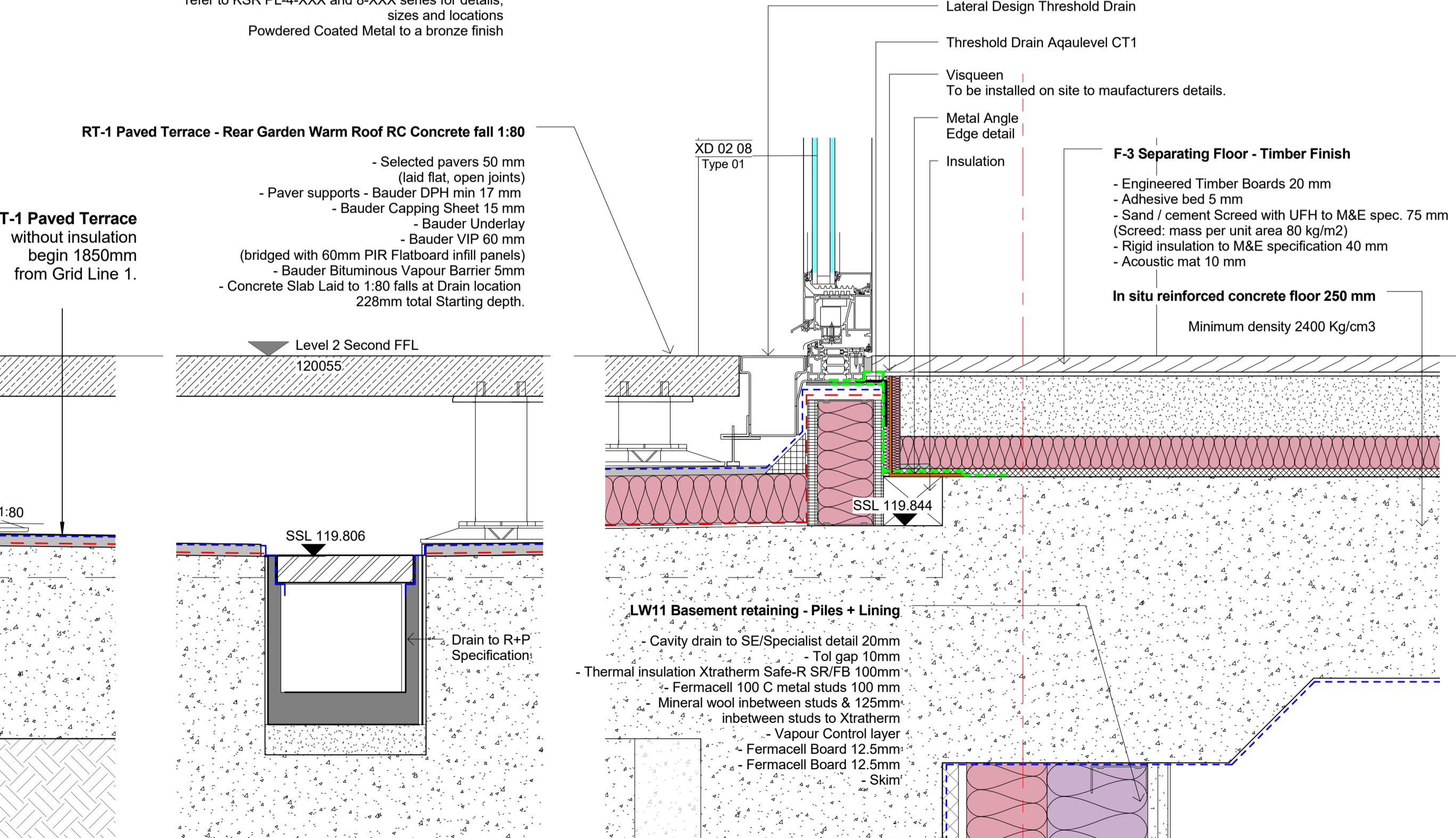
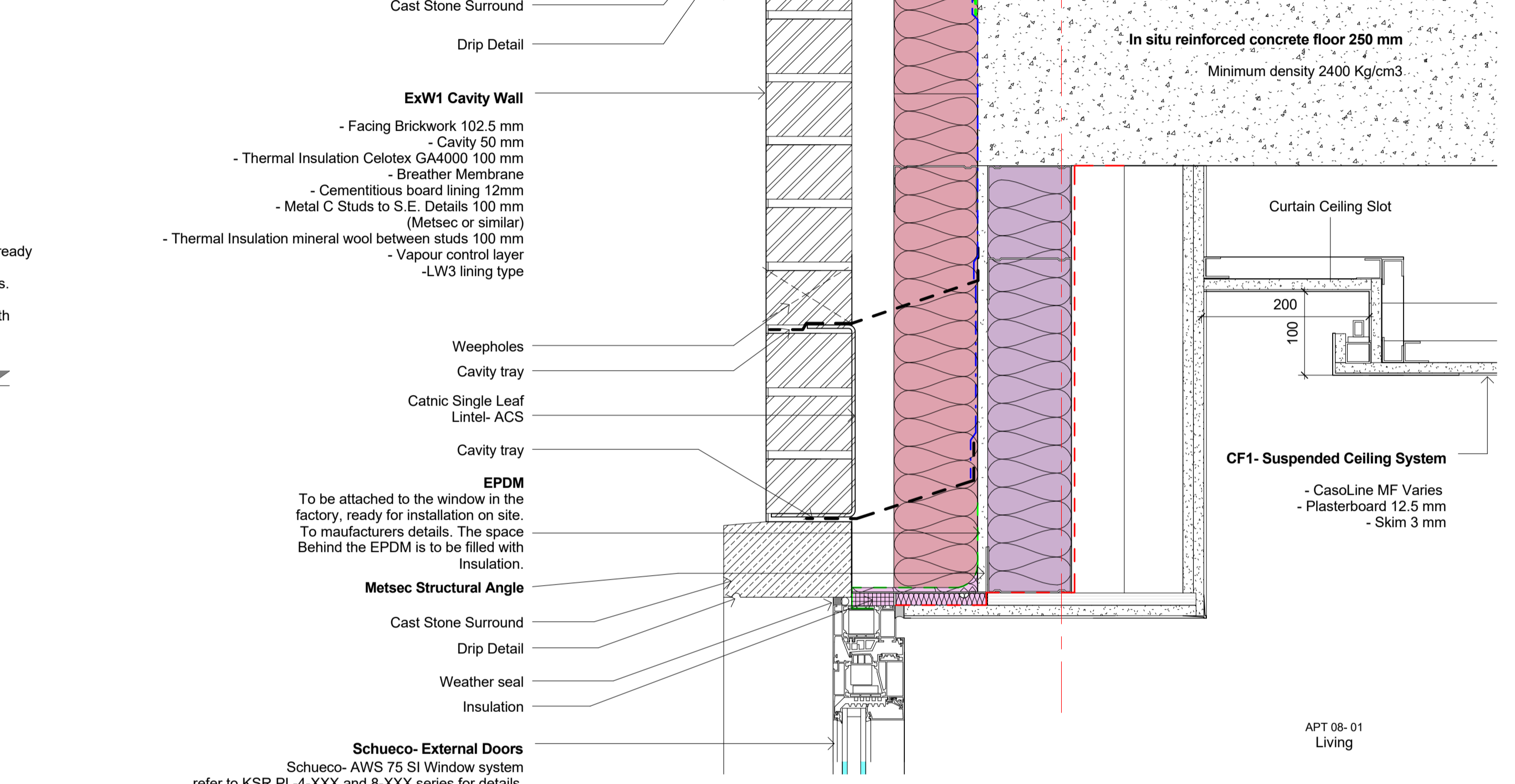


3 RAILING DETAIL
1:5



2 GARDEN ACCESS - LEVEL THRESHOLD
1:5

1 JULIET BALCONY DETAIL
1:5



1 LW11 Basement retaining - Piles + Lining
1:5

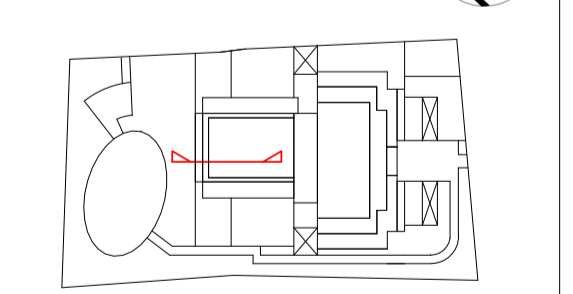
General notes:
This drawing is copyright of KSR architects. This drawing must be read in conjunction with the Designer's Risk Assessment, specification and all other relevant documentation and drawings. KSR architects accept no liability for any expense, loss or damage of whatsoever nature and however arising from any variation made to this drawing or in the execution of the work to which it relates which has not been referred to them and their approval obtained. Do not scale from this drawing or the digital data, only figured dimensions are to be used. For Planning refer to linear scale. Check all dimensions on site prior to carrying out any works - advise of any discrepancy.

Notes/Legends

B	Planning conditions	28 Feb 19	SAS
A	Draw Planning Details, Sign-off	09 Jan 19	BT
Rev	Description	Date	Chkd

© KSR architects
Stamp

Planning



KSRARCHITECTS
KSR Architects LLP
14 Greenland Street
London NW10 0ND
T: +44 (0)20 7692 5000
E: info@ksrarchitects.com
W: www.ksrarchitects.com

Project:
29 NEW END

Title:
Typical Window Details 3

Date:	12/21/18	Drawn By:	Author	Checked:	Checker
Scale:	1:5 @ A1	1:50@G1	Status:	Planning	
Project Ref:	NEN - PL-4-413	Drawing No:	B	Revision:	