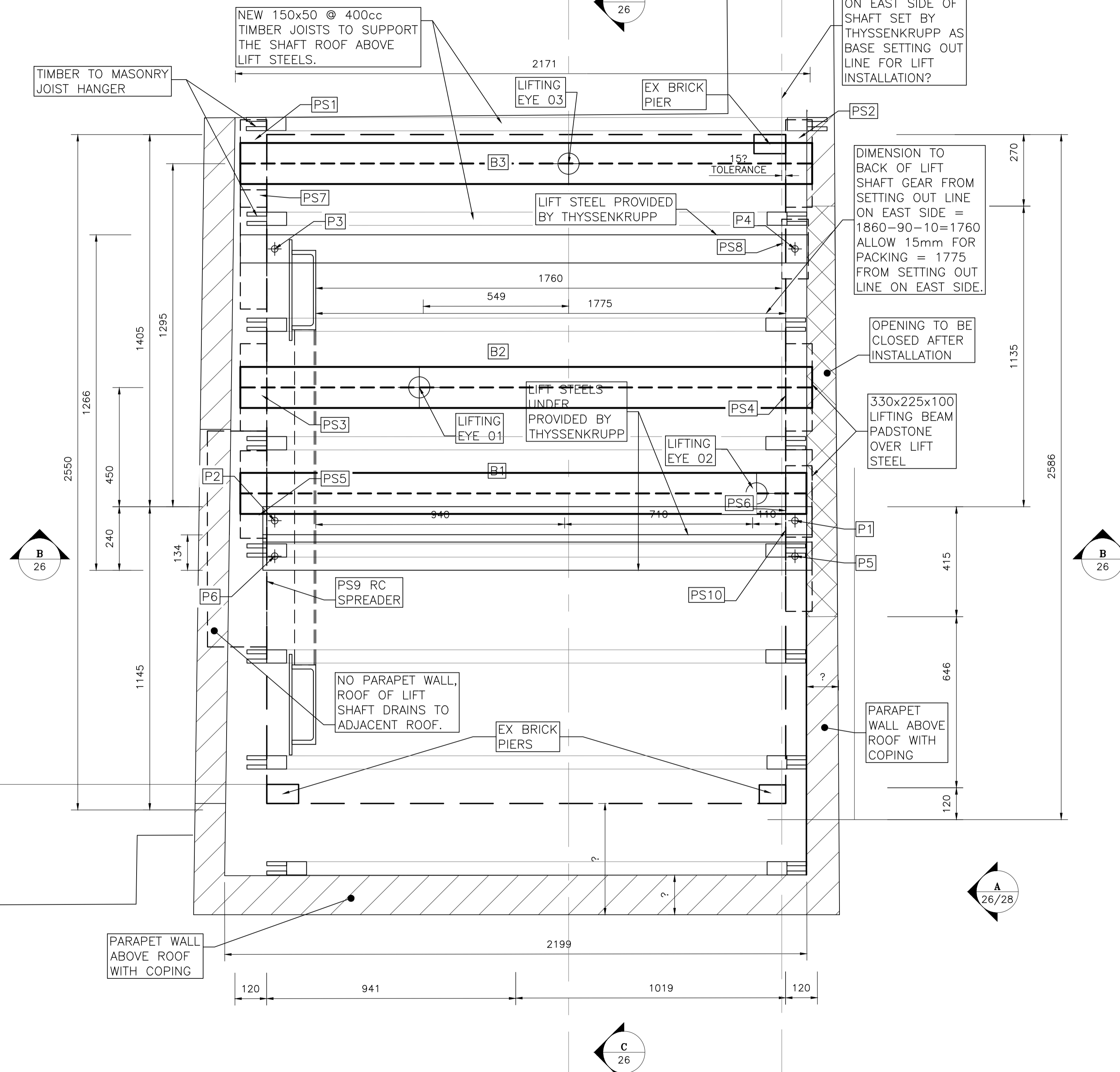


LOADS (kN)		
SHAFT HEAD		
LOAD CASE	IN OPERATION	EXCEPTIONAL IMPACT (yf=1)
FACTOR	1.0	2, 3 (AT v=1.0 m/s)
P1	7	16.1
P2	22	50.6
P3	12	27.6
P4	4	9.2
P5	8	18.4
P6	28	64.4
LIFTING POINT IN THE SHAFT HEAD		
O1	15	
O2	5	
O3	10	

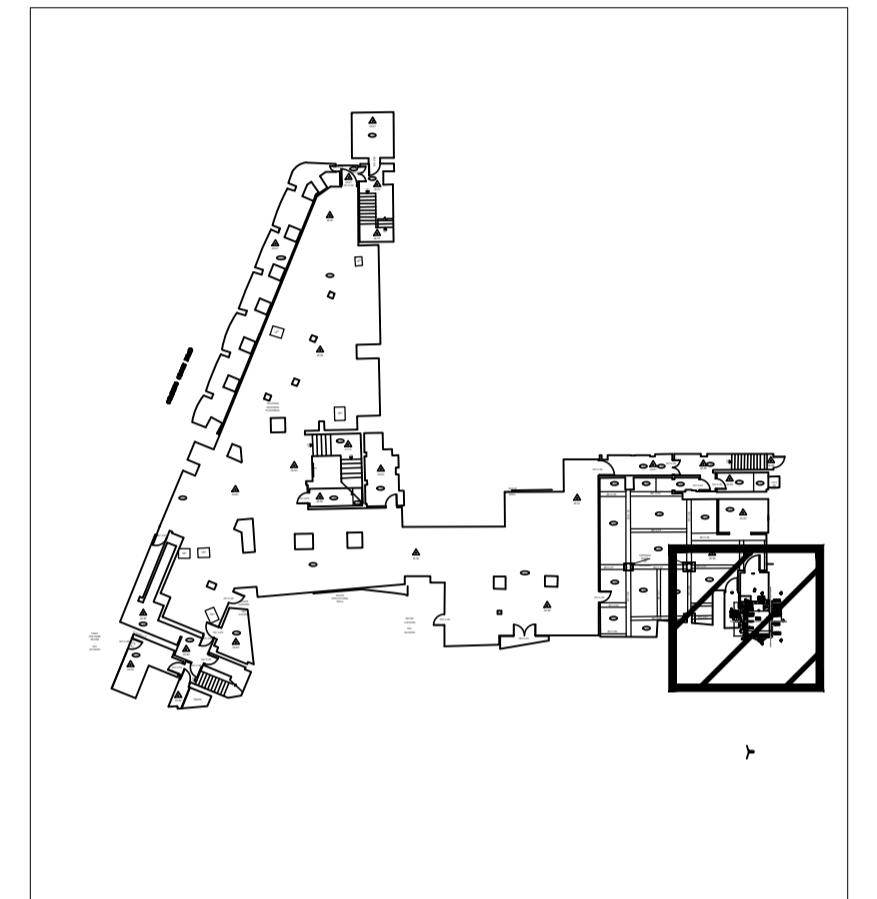
Beam Schedule		
BEAM REF	BEAM SIZE (DxW)	No. OFF
B1, B2, B3	152x152x 37UC	3

Padstone Schedule		
PADSTONE REF	PADSTONE SIZE	No. OFF
PS1	300Lx225Dx100W	1
PS2	300Lx225Dx100W	1
PS3	300Lx225Dx100W	1
PS4	330Lx225Dx100W	1
PS5	300Lx225Dx100W	1
PS6	330Lx225Dx100W	1
PS7	450Lx330Dx100W	1
PS8	225Lx225Dx100W	1
PS9	815Lx225Dx225W	1
PS10	550Lx330Dx100W	1



NOTES

- THIS DRAWING IS TO BE READ IN CONJUNCTION WITH ALL RELEVANT OTHER DRAWINGS, DETAILS AND SPECIFICATIONS.
- NO DIMENSIONS ARE TO BE SCALED FROM THIS DRAWING WITHOUT THE PRIOR PERMISSION OF THE ENGINEER.
- ALL LEVELS AND SETTING OUT GIVEN ON THIS DRAWING ARE TO BE CONFIRMED ON SITE BY THE CONTRACTOR PRIOR TO COMMENCEMENT OF THE WORKS AND ANY DISCREPANCIES FORWARDED TO THE ENGINEER AS A MATTER OF URGENCY.
- NOTE: EXACT LOCATION OF LIFT SHAFT IN RELATION TO MEASURE SURVEY SHOWN APPROXIMATELY (NOT PART OF ORIGINAL SURVEY).
- REFER TO LANDMARK ARCHITECTS DRAWING No 540/SK001 FOR DETAILS OF NEW ROOF COVERING AND FLASHING.
- ALL NEW STEEL BEAMS TO BE SUPPORTED BY THYSSEN KRUPP LIFTING BEAM B1, B2, B3. SUPPLIED BY THYSSEN KRUPP BUT INSTALLED BY BUILDER.



KEY PLAN

Revision	Date	Description	Signed	Checked
T1	24.08.18	TENDER ISSUE. LAYOUT UPDATED TO MATCH THYSSENKRUPP'S.	VS	TB
P3	12.02.18	UPDATED TO THYSSENKRUPP'S DRAWING 594597-943985/B	VS	TB
P2	20.09.17	ISSUED FOR COMMENTS	VS	TB
P1	04.09.17	ISSUED FOR COMMENTS	VS	TB

STATUS: TENDER ISSUE

Client: TJX EUROPE

Job: TK MAXX 118-120 CHARING CROSS RD LONDON WC2H 0JR

Title: GOODS LIFT SHAFT AS PROPOSED AT ROOF LEVEL

COPYRIGHT: The contents of this drawing may not be reproduced in whole or part without the prior written permission of BARNARD & ASSOCIATES Ltd

BARNARD & ASSOCIATES Ltd
Consulting Engineers
18 Northfields Prospect
Northfields, London, SW18 1PE
Tel No. 0208 874 9005
Fax No. 0208 870 7386
Email barnard@intonet.co.uk

Scale	1:10 @ A1 1:20 @ A3	Drg No.	10054-25	Revision	T1
Drawn	VS	30.08.17			
Checked	TB		F140 issue02 17.05.09		

