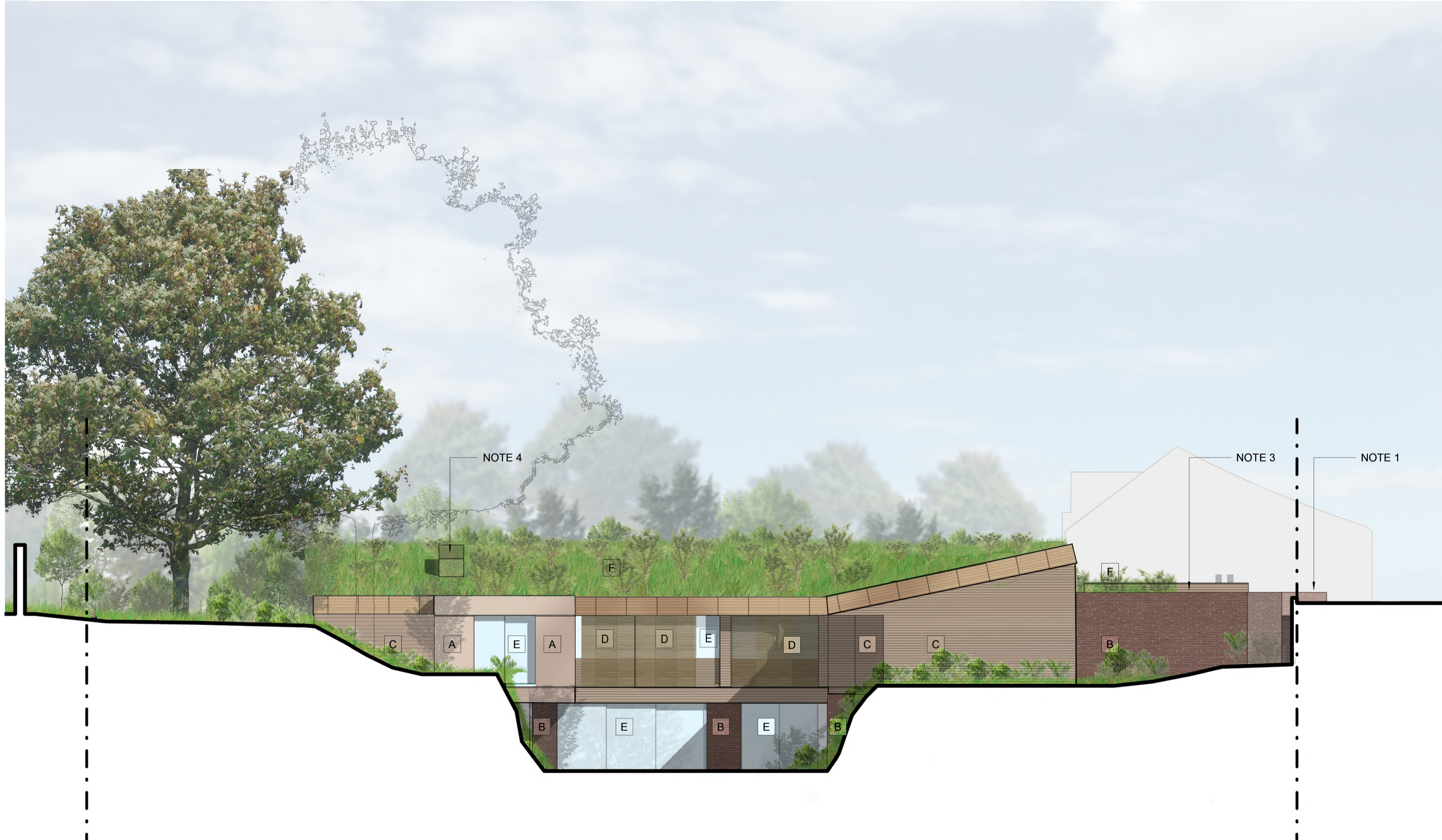


General notes:
 This drawing is copyright of KSR architects. This drawing must be read in conjunction with the Designer's Risk Assessment, specification and all other relevant documentation and drawings. KSR architects accept no liability for any expense, loss or damage of whatsoever nature and however arising from any variation made to this drawing or in the execution of the work to which it relates which has not been referred to them and their approval obtained.
 Do not scale from this drawing or the digital data, only figured dimensions are to be used. For Planning refer to linear scale.
 Check all dimensions on site prior to carrying out any works - advise any discrepancy

- Notes/Legends
- A. INSULATED EXTERNAL RENDER
 - B. BRICK CLADDING
 - C. TIMBER CLADDING
 - D. TIMBER SCREENING
 - E. GLAZING
 - F. INTENSIVE GREEN ROOF
 - G. STANDING SEAM COPPER ROOF
 - H. GREEN WALL



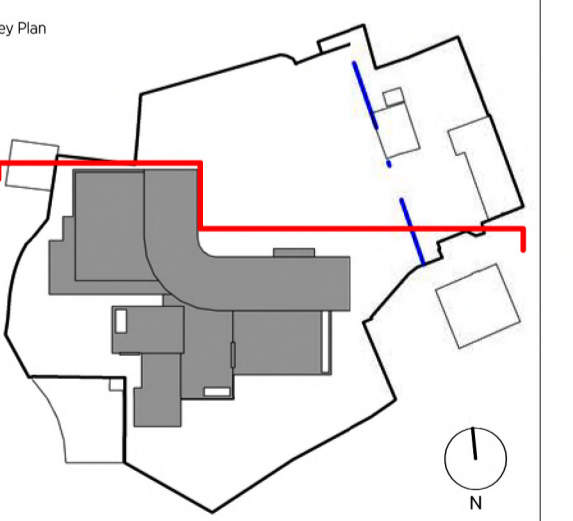
1 PA 301 NORTH ELEVATION
 1:100

- NOTE 1:
 PROPOSED ADDITIONAL PVs BEHIND THE PARAPET.
- NOTE 2:
 PVS AS PER APPROVED PLANNING DOCUMENTATION (REF: 2015/3530/P)
- NOTE 3:
 TIMBER CLAD VENT ENCLOSURE, VISUALLY CONCEALED BY THE PARAPET AND ADJACENT GREEN ROOF PLANTING.
- NOTE 4:
 VENT WITH GREEN ROOF TO VISUALLY BLEND IN WITH THE PLANTING.
 INTENSIVE ROOF PLANTING, VISUALLY CONCEALED BEHIND ADJACENT SHRUB PLANTS.
- NOTE 5:
 PROPOSED CHIMNEY

A Additional PVs and roof vents 08.03.19 LV

Rev	Description	Date	Chkd

© KSR Architects
 Stamp



KSRARCHITECTS
 KSR Architects LLP mail@ksrarchitects.com
 14 Greenford Street t: +44 (0)20 7835 9000
 London NW10 0ND www.ksrarchitects.com

Project:
22 FROGNAL WAY

Title:
NORTH ELEVATION

Date: 02/20/19	Drawn By: Author	Checked: Checker
Scale:	Status:	

Project Ref:	Drawing No:	Revision:
FGW	FGW-P-301	A