

PROPOSED TEF GPS TO BE INSTALLED 200mm ABOVE PROPOSED ANTENNA. (REFER TO DRAWING 608 FOR DETAILS)

PROPOSED REMOVAL AND REPLACEMENT OF EXISTING 1No. VF ADC ANTENNA WITH 1No. NEW TEF COMMSCOPE ANTENNA ON EXISTING SUPPORT POLE C/W 1No. L23 RRU AND 4No. FUTURE RRU'S FIXED AT BASE OF POLE ON 1No. MAFI 4019-3 & 1No. MAFI 4019-2 RRU SUPPORT BRACKETS

TOP OF PROPOSED TEF & EXISTING VF ANTENNAS +58.00m AGL

U/S OF PROPOSED TEF ANTENNAS +56.00m AGL

U/S OF EXISTING VF ANTENNAS +55.70m AGL

EXISTING MAIN ROOF LEVEL +53.00m AGL

EXISTING OLO ANTENNA ON SUPPORT FRAME

EXISTING OLO ANTENNA ON SUPPORT FRAME

EXISTING 1No. VF ANTENNA MOUNTED ON SUPPORT POLE

EXISTING 1No. VF ANTENNA MOUNTED ON SUPPORT POLE

EXISTING OLO EQUIPMENT CABIN ON STEEL GRILLAGE

EXISTING SATELLITE DISH

PROPOSED REMOVAL AND REPLACEMENT OF EXISTING 1No. VF ADC ANTENNA WITH 1No. NEW TEF COMMSCOPE ANTENNA ON EXISTING SUPPORT POLE C/W 1No. L23 RRU AND 4No. FUTURE RRU'S FIXED AT BASE OF POLE ON 1No. MAFI 4019-3 & 1No. MAFI 4019-2 RRU SUPPORT BRACKETS

EXISTING OLO 1No. ANTENNA & 1No. DISH ON STEEL SUPPORT FRAME

EXISTING FREE STANDING HANDRAIL AROUND BUILDING PERIMETER

EXISTING 1No. VF ANTENNA MOUNTED ON SUPPORT POLE

EXISTING 1No. VF ANTENNA MOUNTED ON SUPPORT POLE

ALL DIMENSIONS ARE IN mm UNLESS NOTED OTHERWISE

N.G.R E: 530580 N: 181210

CONCESSION REQUIRED Yes

NOTES:

NOTE: THE ASBESTOS REPORT IS HELD ON SITE AND CAN BE VIEWED ON REQUEST.

B	Notes updated	BCL	DF	23.11.18
A	Issued for Construction	BCL	DF	15.11.18
REV	MODIFICATION	BY	CH	DATE

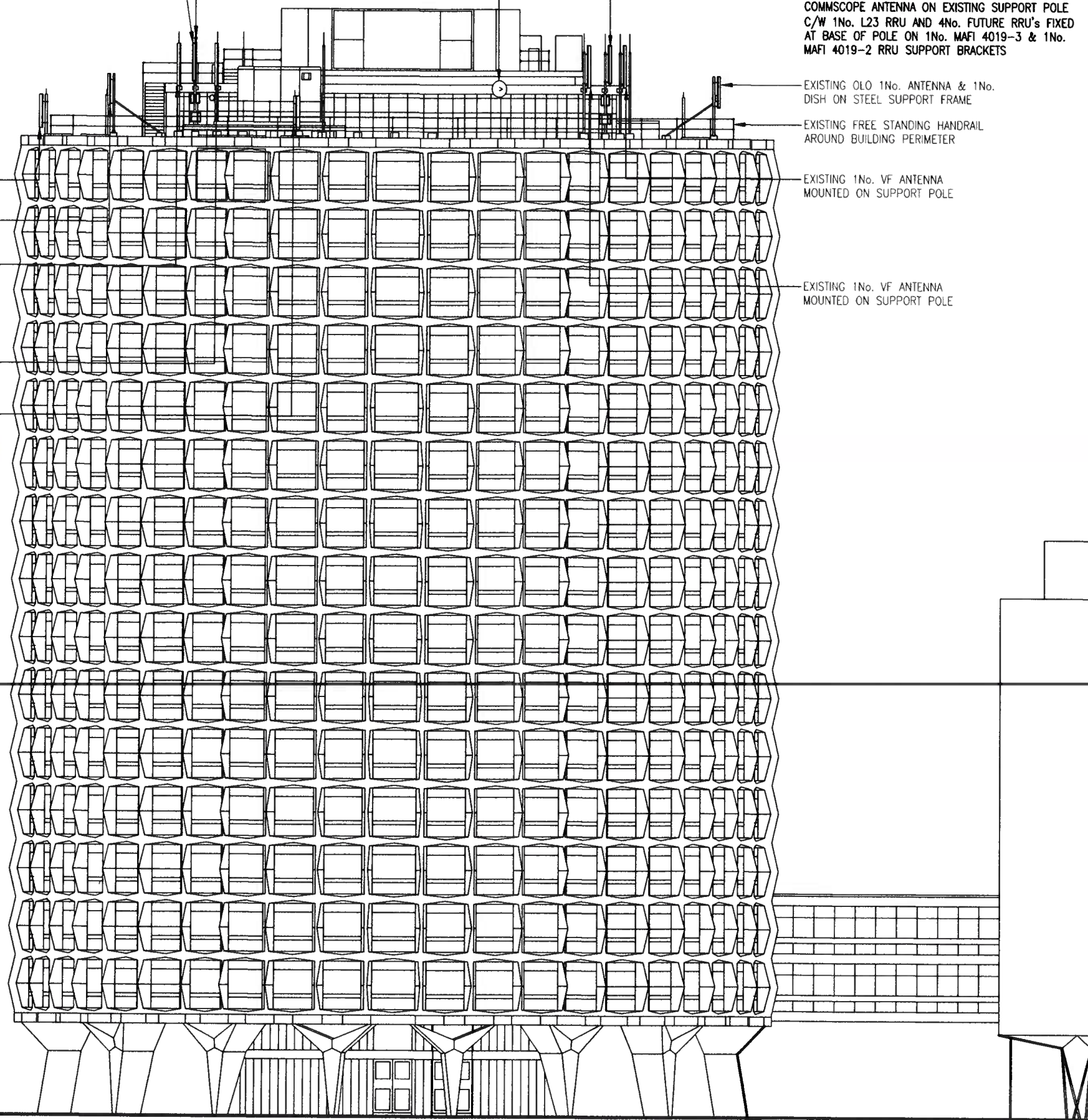
WHP Telecoms Ltd
 Faraday Court,
 401 Faraday St, Birchwood Park
 Warrington, WA3 6GA
 Tel: 01925 424100 Fax: 01925 424101
 e-mail: info@whptelecoms.com

O₂
CTIL - LONDON

Cell Name		Opt.
HOLBORN		-
Cell ID No		
CTIL	TEF	VF
208161	44397	00358

Site Address / Contact Details
 CAA H.S.E.
 45-59 KINGSWAY
 HOLBORN
 LONDON
 WC2B 6QT

Drawing Title: PROPOSED SITE ELEVATION				
Purpose of issue: CONSTRUCTION				Dwg Rev: B
Drawing Number: 301				B
Surveyed By: BCL	Original Sheet Size: A3		Pack Issue: B	
Drawn: BCL	Date: 15.11.18	Checked: DF	Date: 15.11.18	B



The drawings comply with TEF & Vodafone Standard ICNIRP guidelines.
 Designed in accordance with CTIL document: SDN0008

PROPOSED SOUTH EAST ELEVATION
 (1:250)

