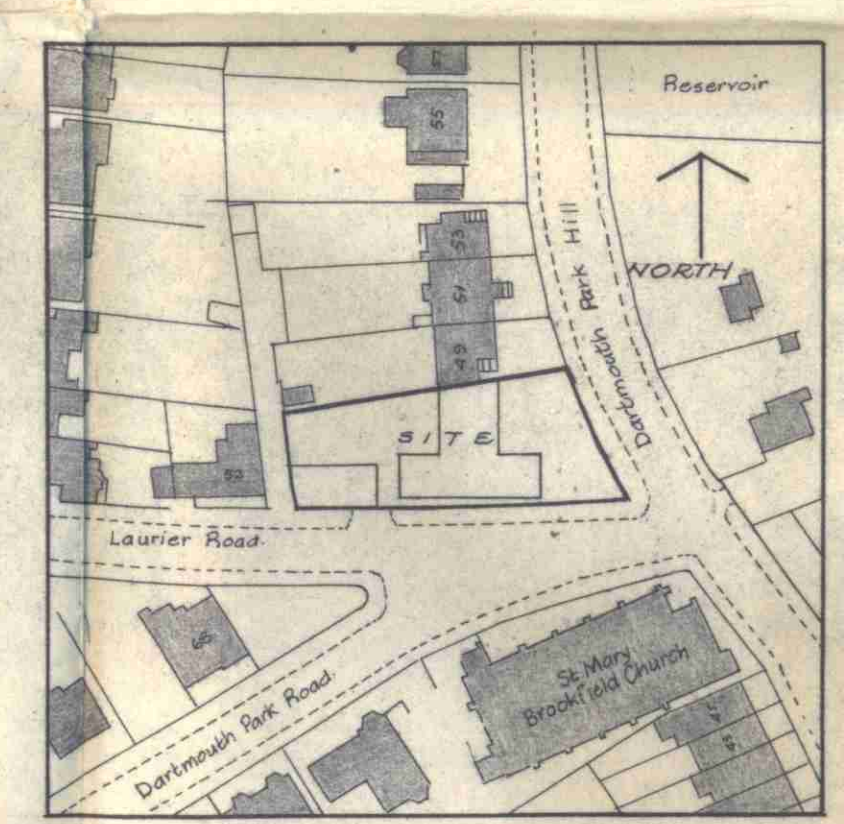
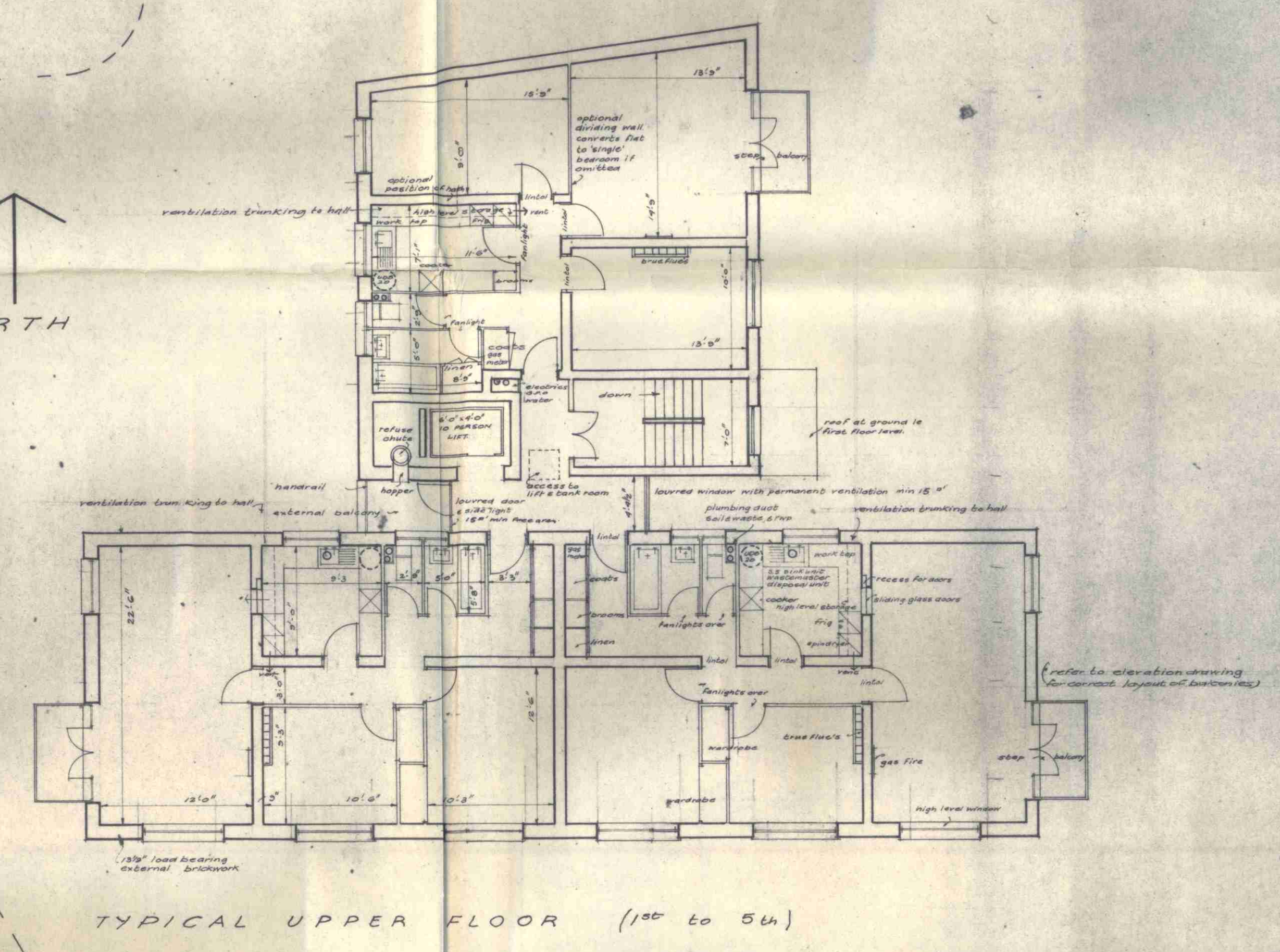
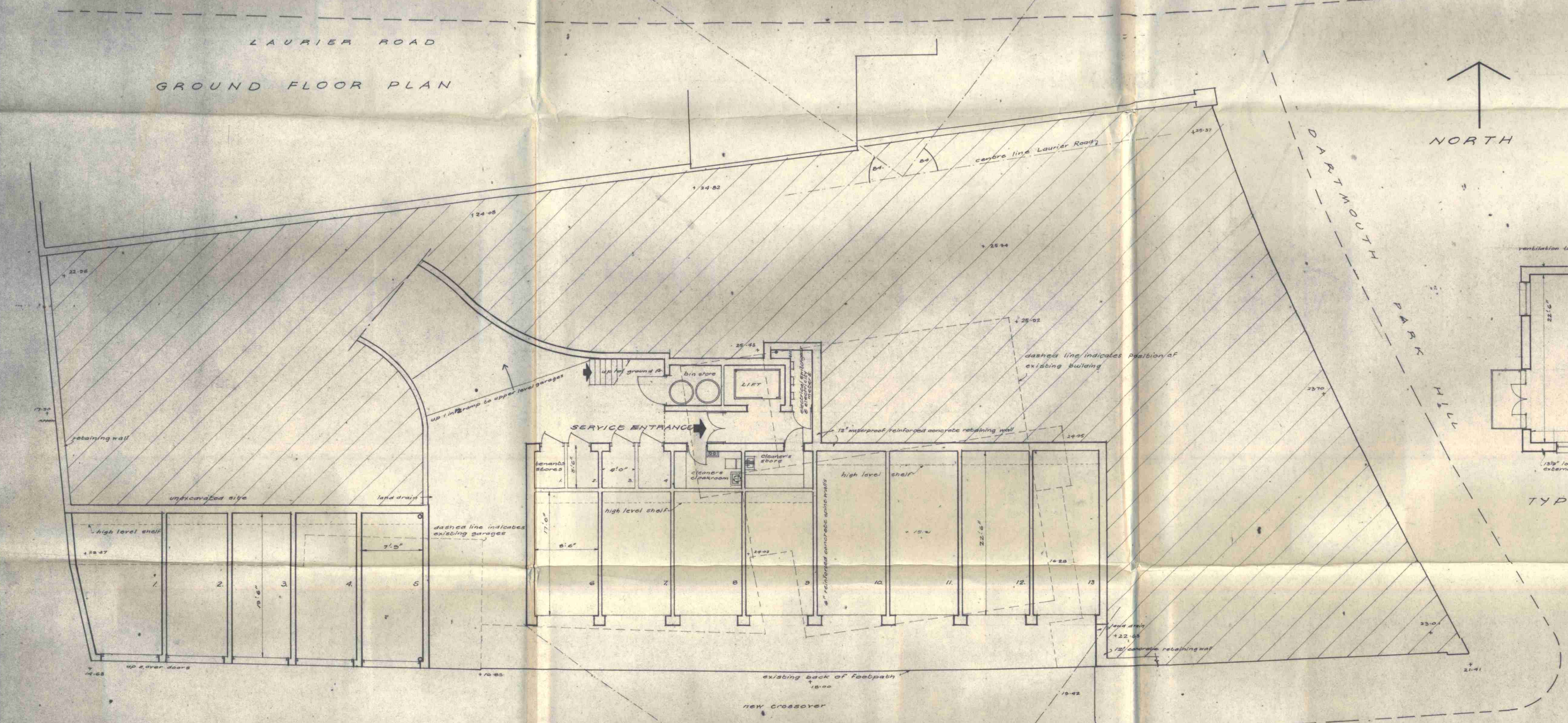
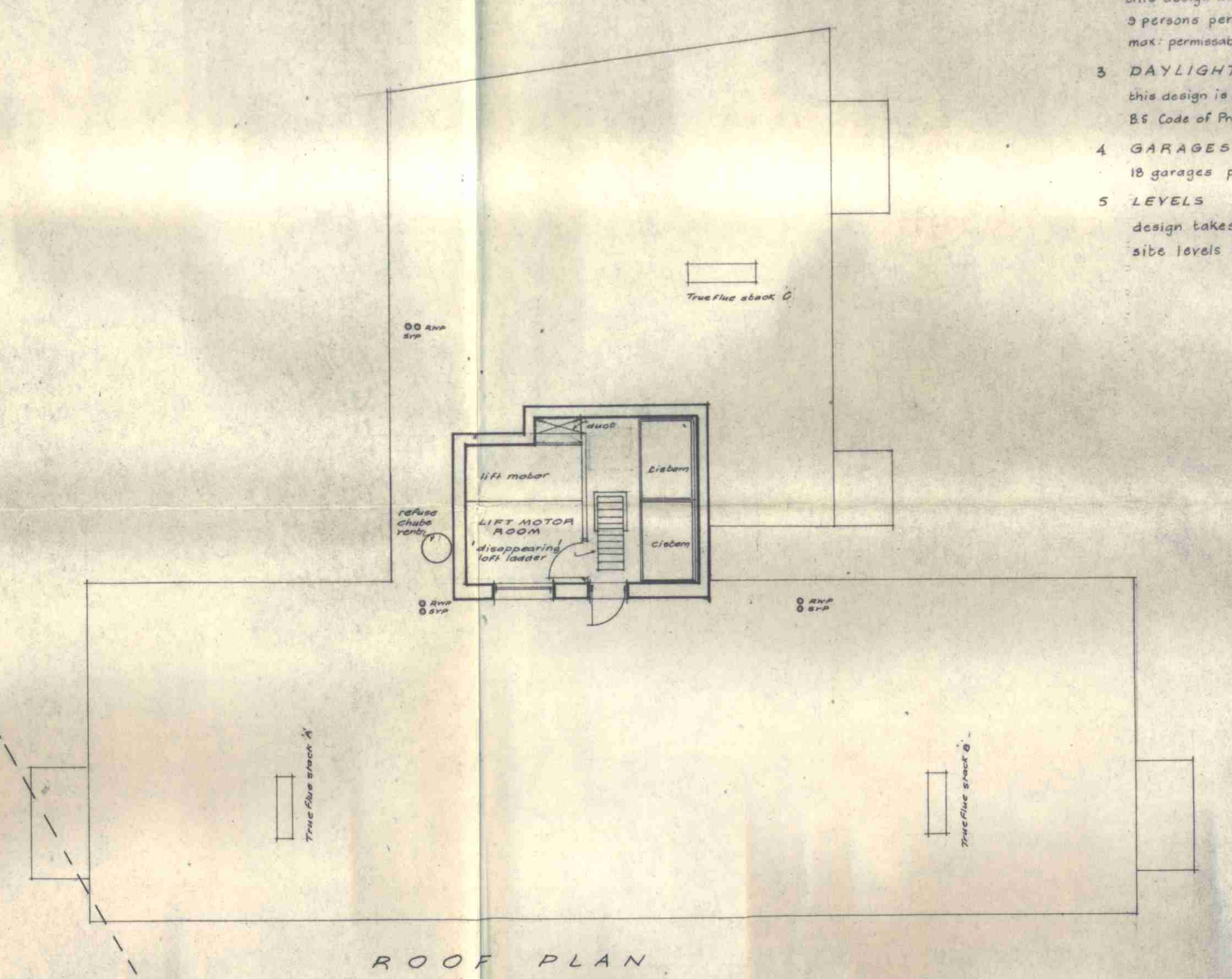
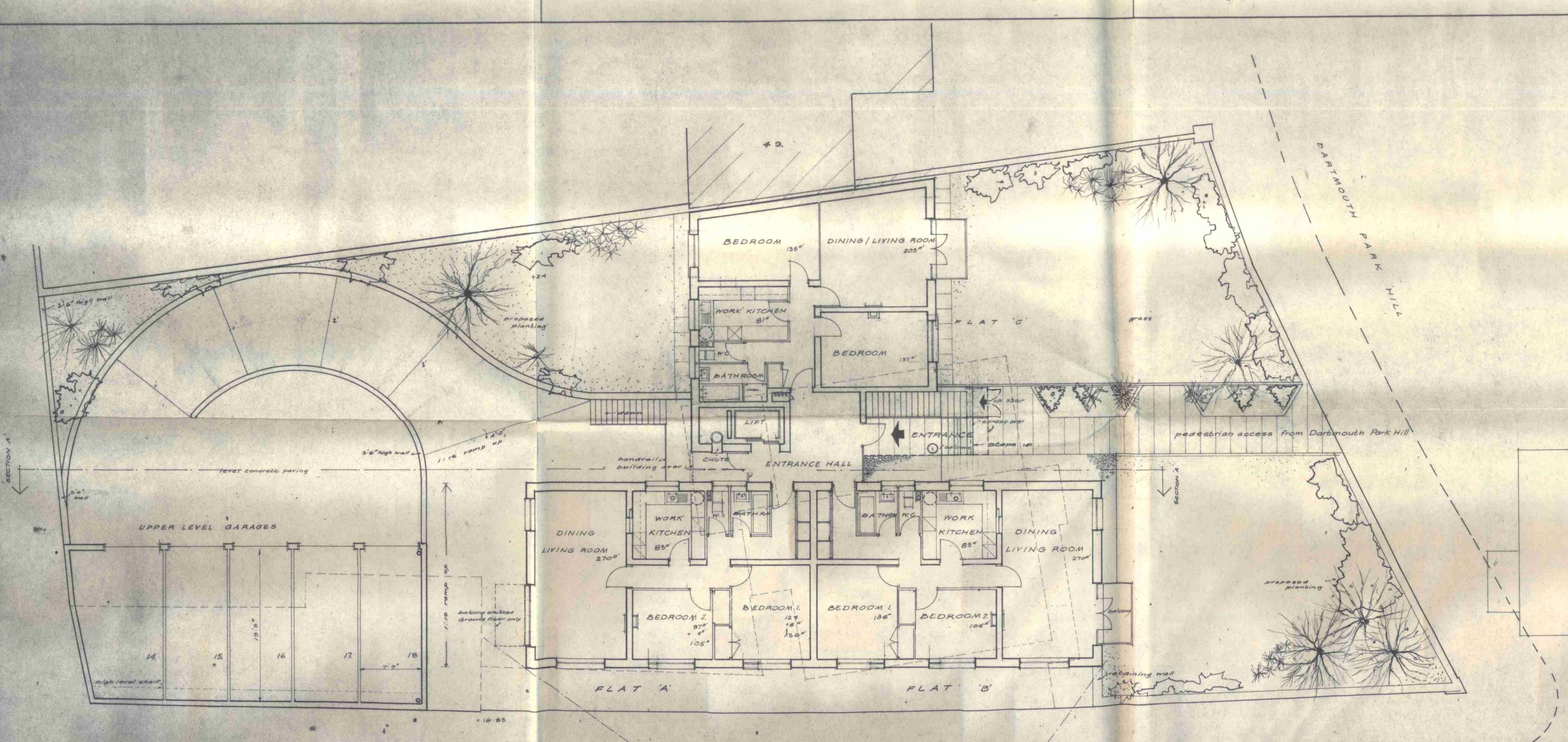


- NOTES**
- SITE AREA**  
for plot ratio purposes = 429 acres
  - DENSITY**  
max. permissible = 130 persons per acre  
this design indicates accommodation for 3 persons per floor = 54 persons.  
max. permissible = 55 persons.
  - DAYLIGHTING**  
this design is in accordance with  
B6 Code of Practice C.P.5
  - GARAGES**  
18 garages provided for 18 flats.
  - LEVELS**  
design takes advantage of existing  
site levels shown thus + 25.02



**SKETCH DESIGN PLANS**

**PROPOSED FLATS**  
47 DARTMOUTH PARK HILL  
ST PANCRAS

FOR  
**FLAMILL INVESTMENTS LIMITED**

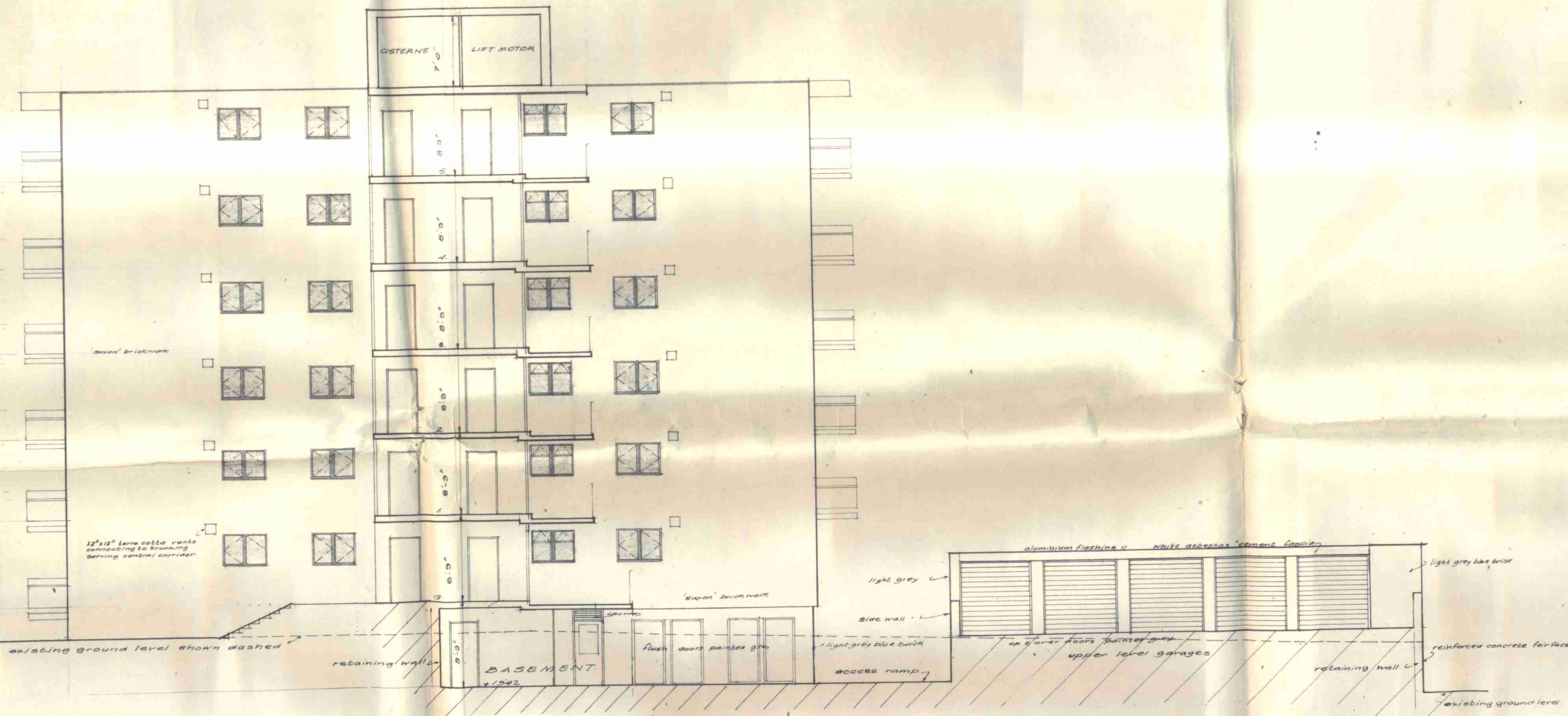
**SILVERTON & WELTON ASSOCIATES** A.R.A., Dip. Arch.  
CHARTERED ARCHITECTS  
14, WESTON ROAD, SOUTHWICH, S.E.A.  
TELEPHONE 486617.

Scale 1/8" to 1'0" Date NOV 63 Drawn J.B.K.C.

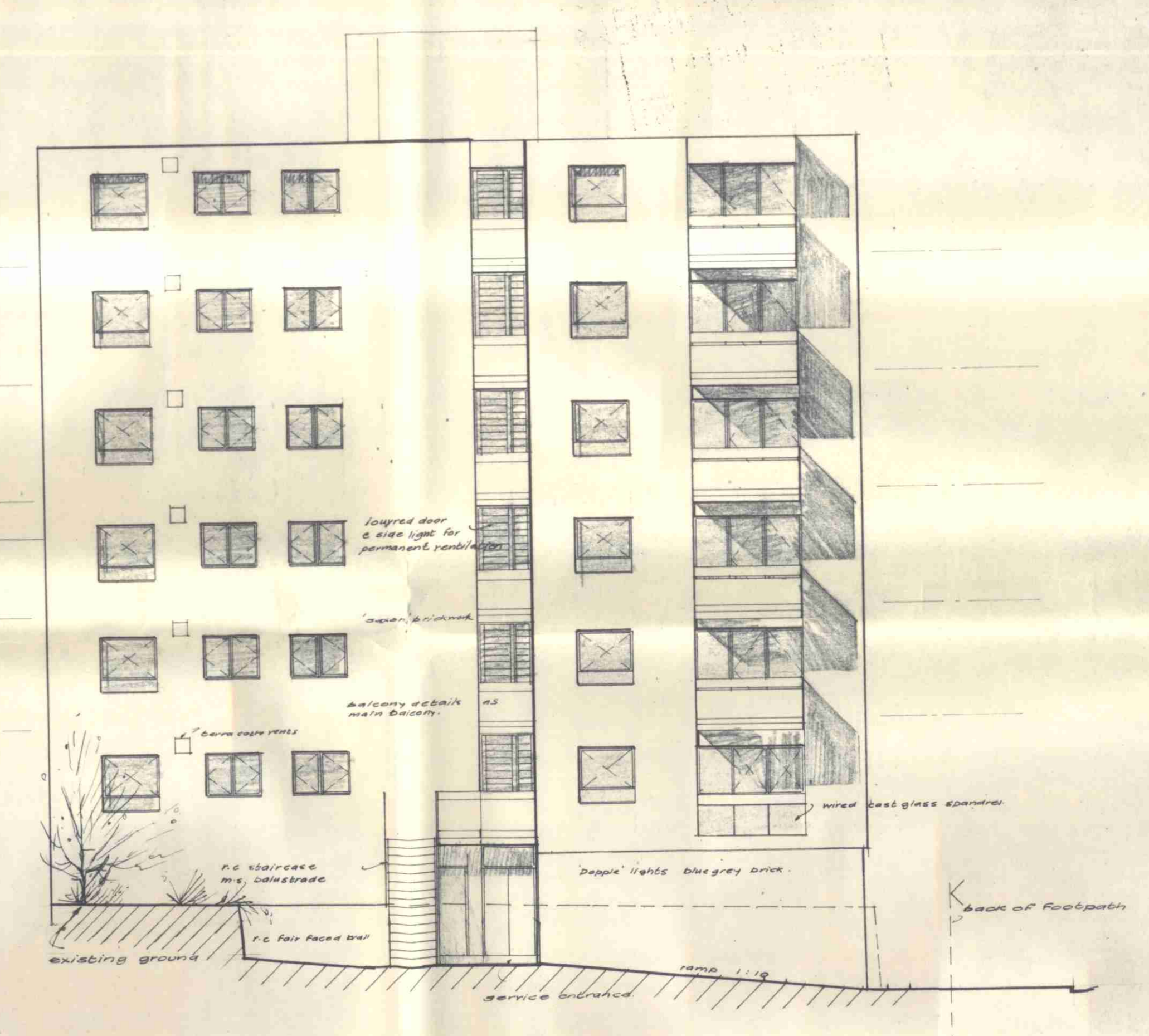
**DRAWING NUMBER**  
2150 A 13 A/1

LONDON COUNTY COUNCIL  
19490 27-1-63  
ARCHITECT'S REGISTRY



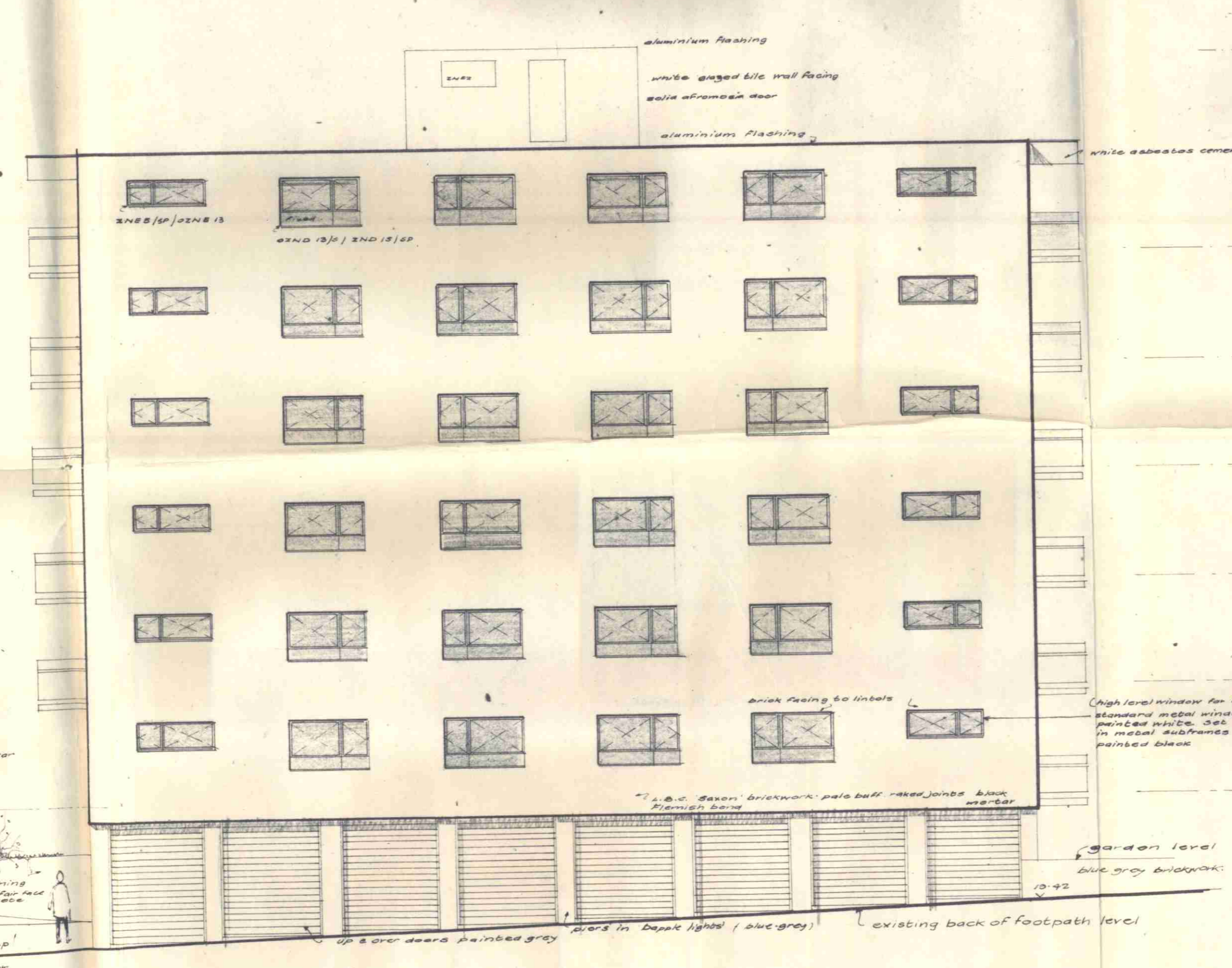


SECTION A-A

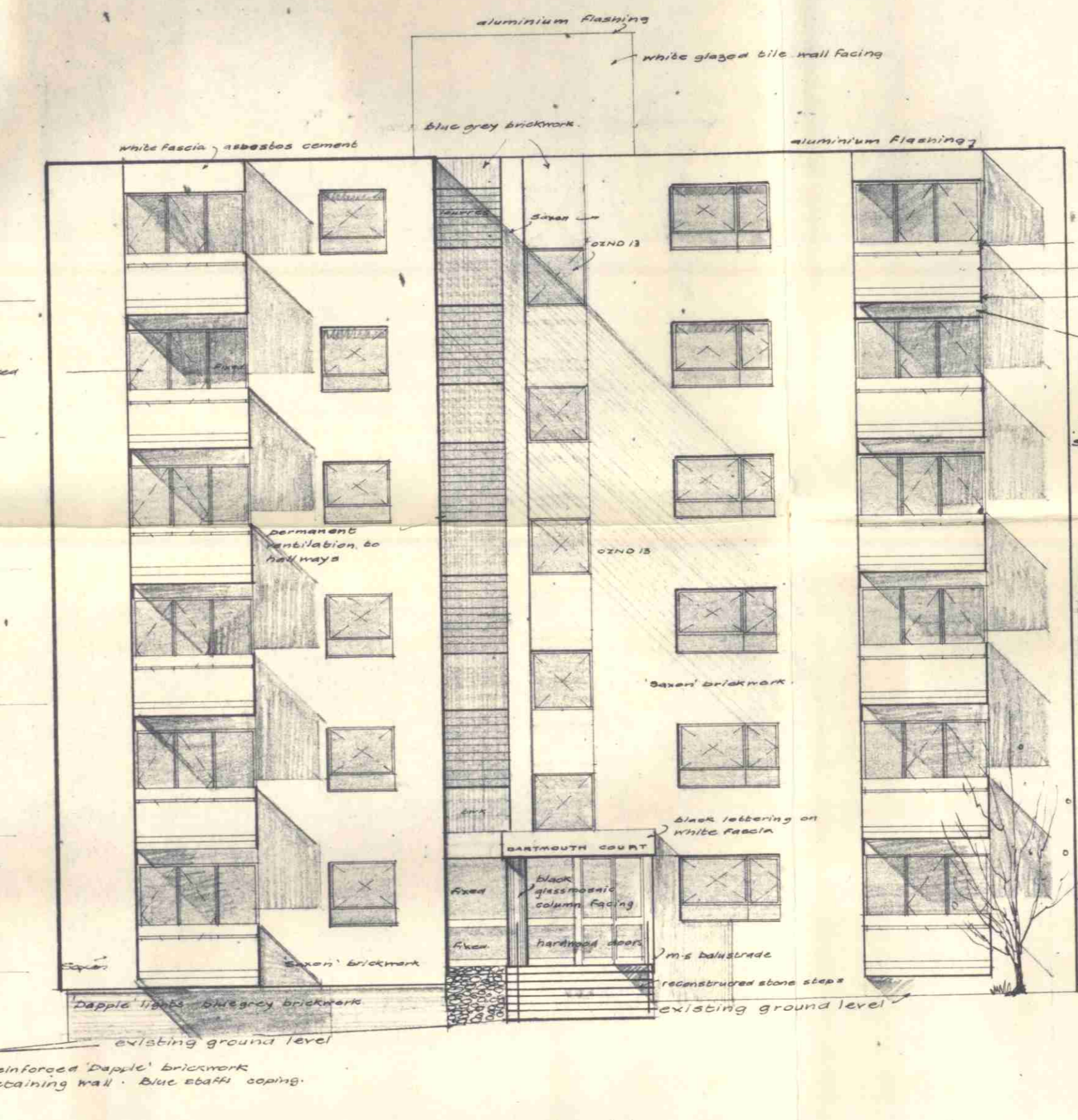


WEST ELEVATION

**MATERIALS :-**  
**WALLS**  
 LOADBEARING BRICK  
 STRUCTURES,  
 LIGHT BROWN FACINGS  
 AS LONDON BRICK CO'S "SAFON"  
**WINDOWS**  
 STANDARD METAL IN METAL  
 SUBFRAMES & SILLS. PAINTED  
 WHITE & BLACK  
**BALCONIES**  
 WIPED CAST GLASS SPANDREL  
 PANELS, WHITE PLASTIC RACED  
 HANDRAIL, BLACK TILE  
 FASCIA TO EDGE OF SLAB.  
**GARAGE DOORS**  
 PAINTED GALVANISED STEEL  
 IN GRAY.



ELEVATION TO LAURIER ROAD



ELEVATION TO DARTMOUTH PARK HILL

SKETCH DESIGN  
 ELEVATIONS

PROPOSED FLATS  
 47 DARTMOUTH PARK HILL  
 ST PANCRAS

FOR  
 FLAMM INVESTMENTS  
 LIMITED

SILVERTON & WELTON  
 ASSOCIATES A.I.A.R.I.B.A. Dip. Arch.  
 CHARTERED ARCHITECTS  
 16, WESTON ROAD, SOUTHWEND-ON-SEA.  
 TELEPHONE 486617.

Scale 1/8" to 1'0"  
 date NOV 63  
 drawn S.W.C.

DRAWING NUMBER  
 2159 A 14

LONDON COUNTY COUNCIL  
 1960 27-11-63  
 ARCHITECT'S REGISTRY