

# **WIND & MICROCLIMATE MITIGATION MEASURES**

**101 Camley Street**

**5657 \_ 901**

**Revision B: February 2019**

---

**LDĀ DESIGN**



# Wind & Microclimate Mitigation Measures

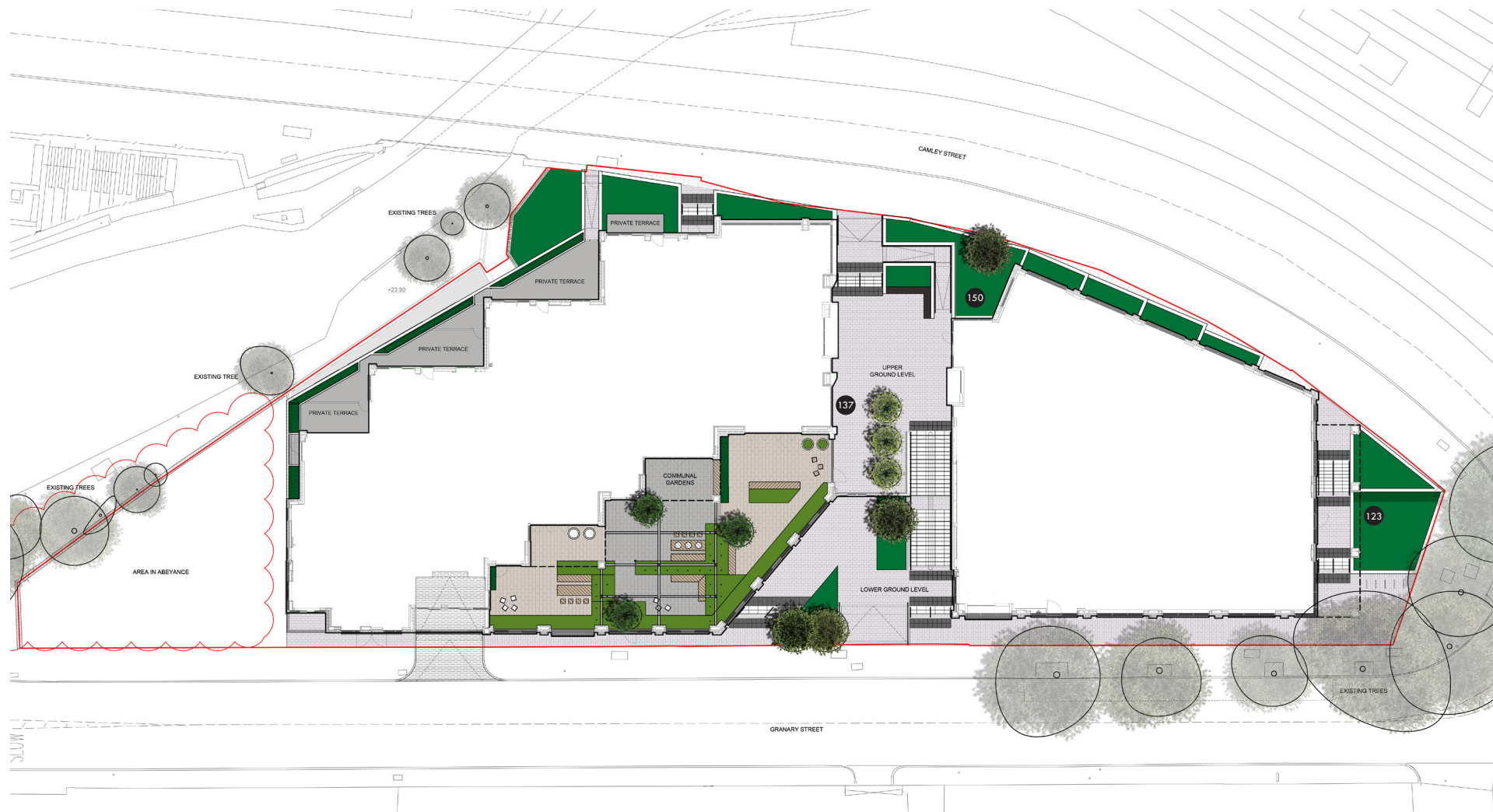
## Wind & Microclimate Summary

This document has been produced to provide a commentary of wind and microclimate mitigation measures in the areas recommended by the Wind Microclimate Assessment (RWDI UK, June 2014).

The overall conclusion from the assessment is that the wind microclimate around the Development and existing surroundings is suitable for its intended use. As part of the landscape design, mitigation measures including the use of soft landscaping and vegetated screening aim to improve the microclimate in the areas identified as having higher wind speeds.



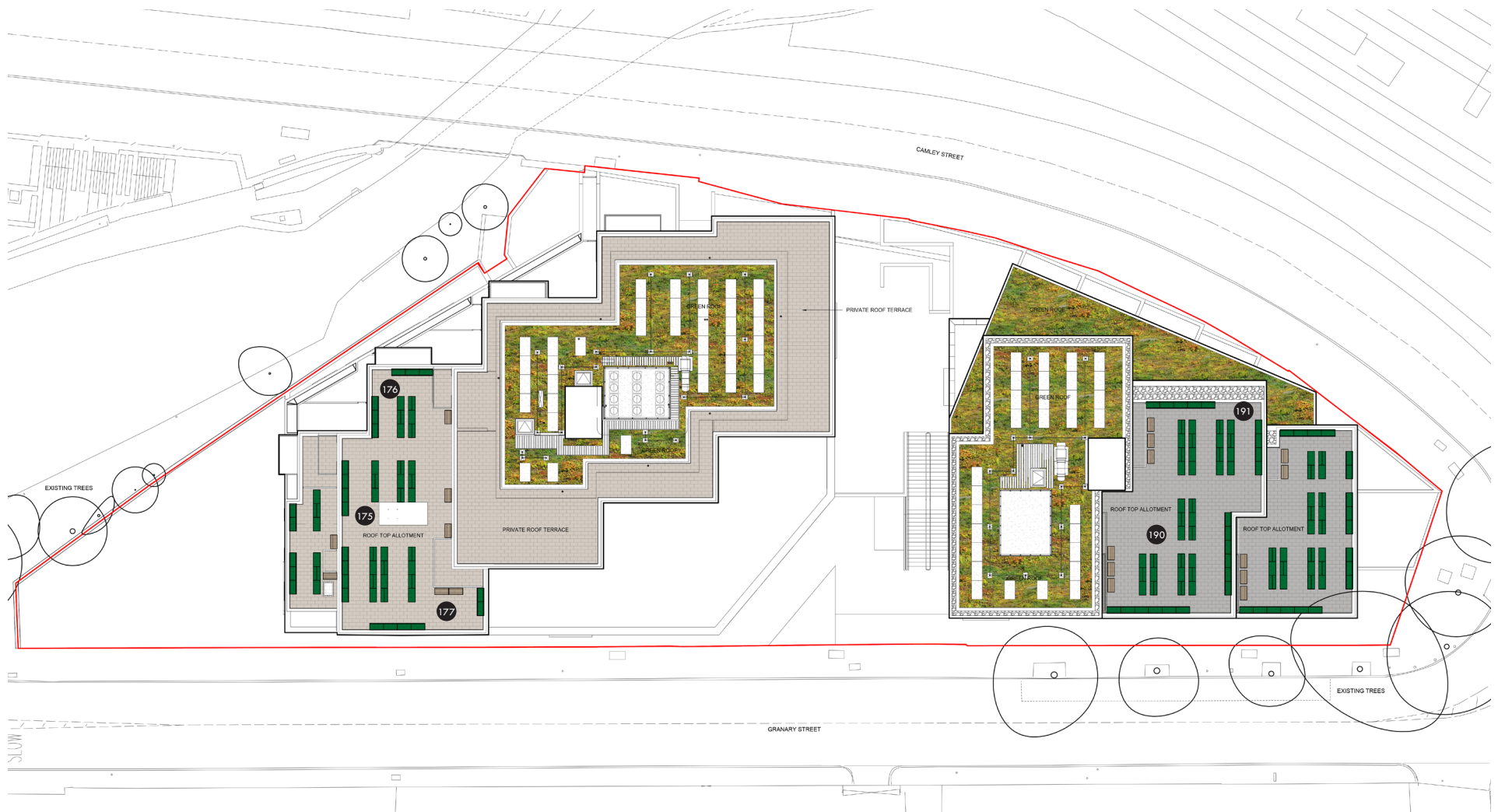
1 Movable planter with trellis



123 Conditions at receptor 123 are suitable for standing in summertime. It is not anticipated that this area will be use for seating and is primarily a pedestrian thoroughfare. Terraced planters with clipped hedgerow have been introduced help to mitigate ground level wind speeds.

137 Conditions at receptor 137, which is located at an entranceway, are suitable for leisure walking in the windiest season. Large conical planters have been positioned to create a localised sheltered area immediately outside the entrance.

150 Conditions at receptor 150 are suitable for standing in summertime. Mitigation of these wind speeds has been achieved by introducing an area of dense planting including a large multi-stem tree to reduce ground level wind speeds.



Various locations on the roof terraces were identified where conditions are generally windier, including receptors 175-177, 190 and 191. In these areas large planted trellises have been provided to reduce wind speeds across the roof top terraces. Seating areas have also been positioned in the most sheltered areas of the terrace in close proximity to the building.