

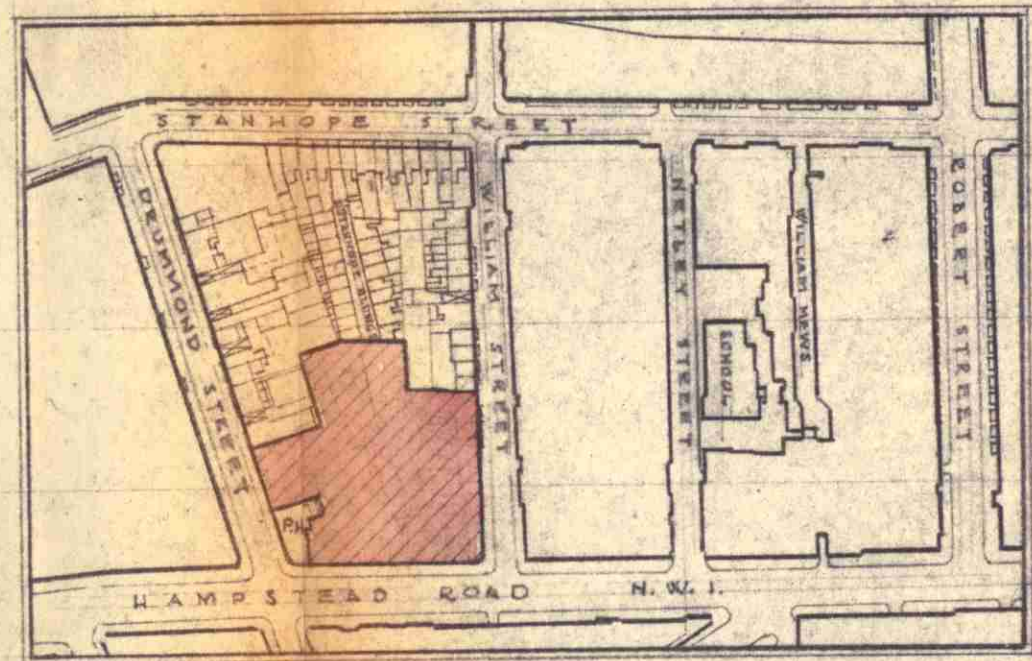
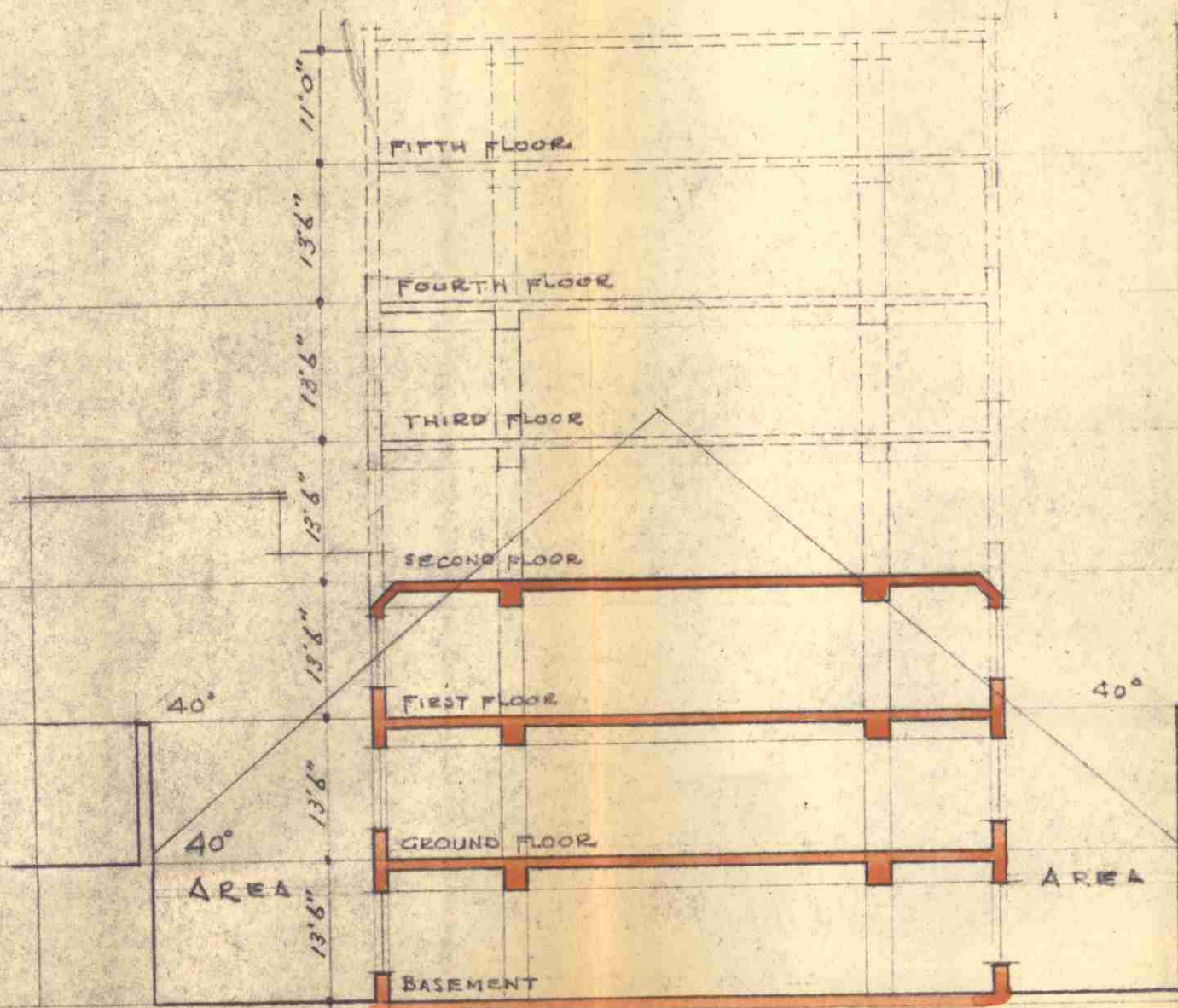
B A S E M E N T P L A N

PROPOSED DEVELOPMENT.  
 NOS 67-87 HAMPSTEAD RD, NOS 146-153 DRUMMOND ST  
 & NOS 7-15 WILLIAM ST. N.W.I.  
 ASSOCIATED ARCHITECTS.  
 E.A. STONE, TOMS & PARTNERS LESLIE C. NORTON,  
 28 SOUTH AUPLEY STREET, 4 ST GEORGE STREET,  
 LONDON, W.1. HANOVER SQUARE, W.1.

DRAWING NO 273/1  
 SCALE 1/16" TO ONE INCH  
 DATE NOV. 1954.

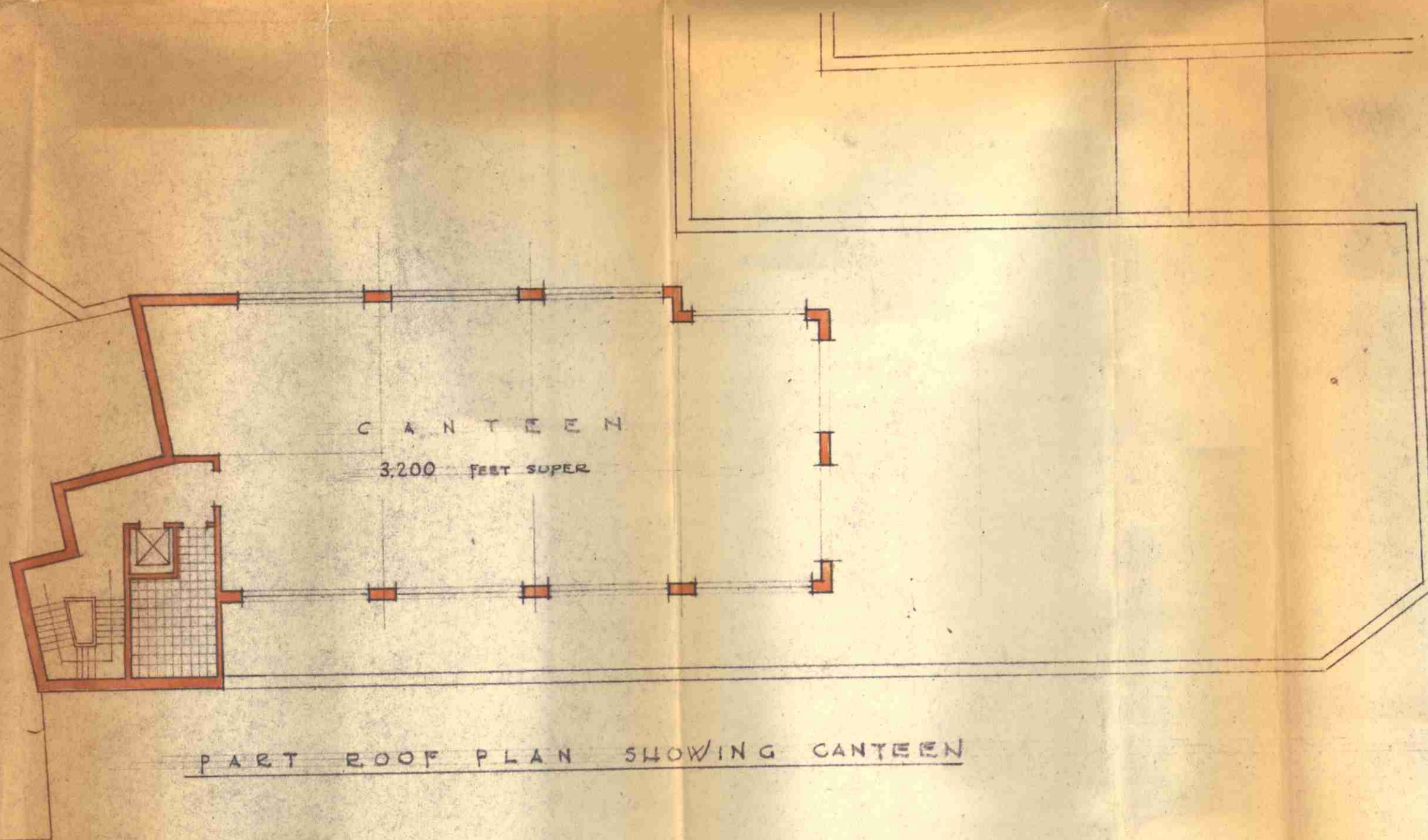
ARCHITECT L.C.C.	
No.	17812
SHOW	3 DEC 1954
SEC.	





S I T E P L A N  
S C A L E - 1/2500

S E C T I O N C - G



P A R T R O O F P L A N S H O W I N G C A N T E E N

P R O P O S E D D E V E L O P M E N T  
 Nos 67-87 HAMPSTEAD RD., Nos 146-152 DRUMMOND ST  
 & Nos 7-15, WILLIAM ST. N. W. 1.  
 ASSOCIATED ARCHITECTS  
 E. A. STONE, TOMS & PARTNERS  
 28 SOUTH AULEY STREET  
 LONDON W.1.  
 LESLIE C. NORTON  
 4 ST. GEORGE STREET  
 HANOVER SQUARE W.1.

DRAWING NO. 273/6  
 SCALE 1/4" TO ONE FOOT  
 DATE Nov. 1954

ARCHITECT L.C.C.	
No.	17812
SHOW	
3 DEC 1954	
SEC.	REF. TO

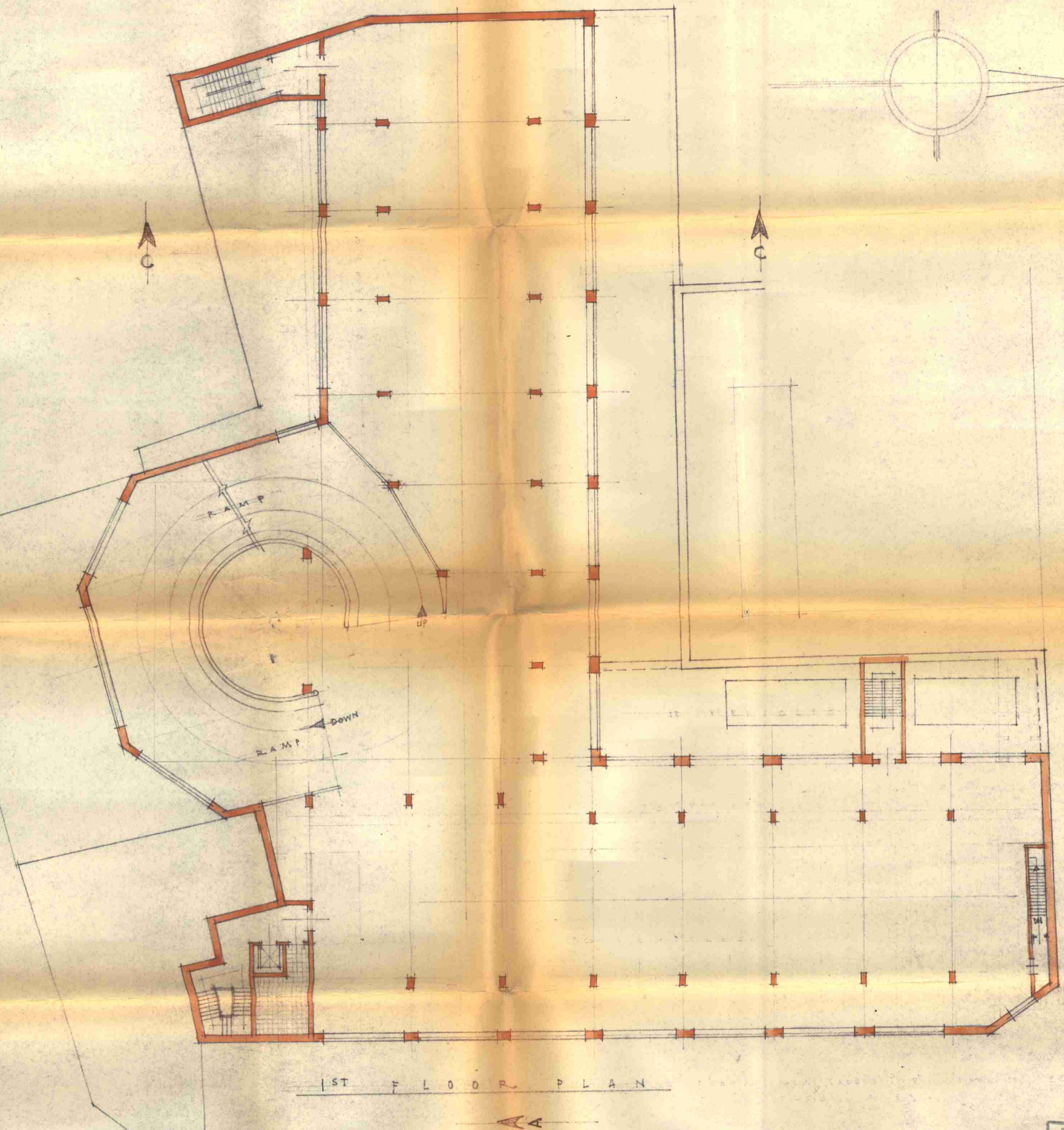
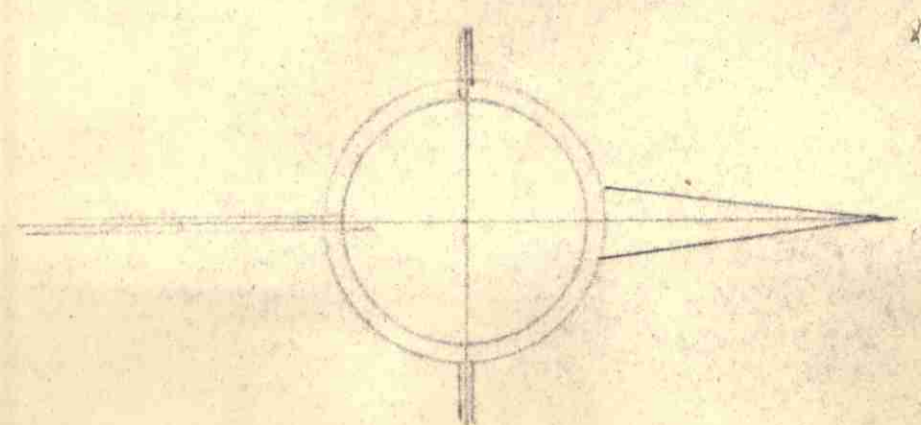
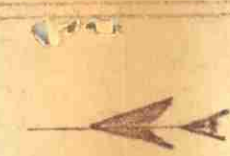


8

C

C

B



1ST FLOOR PLAN



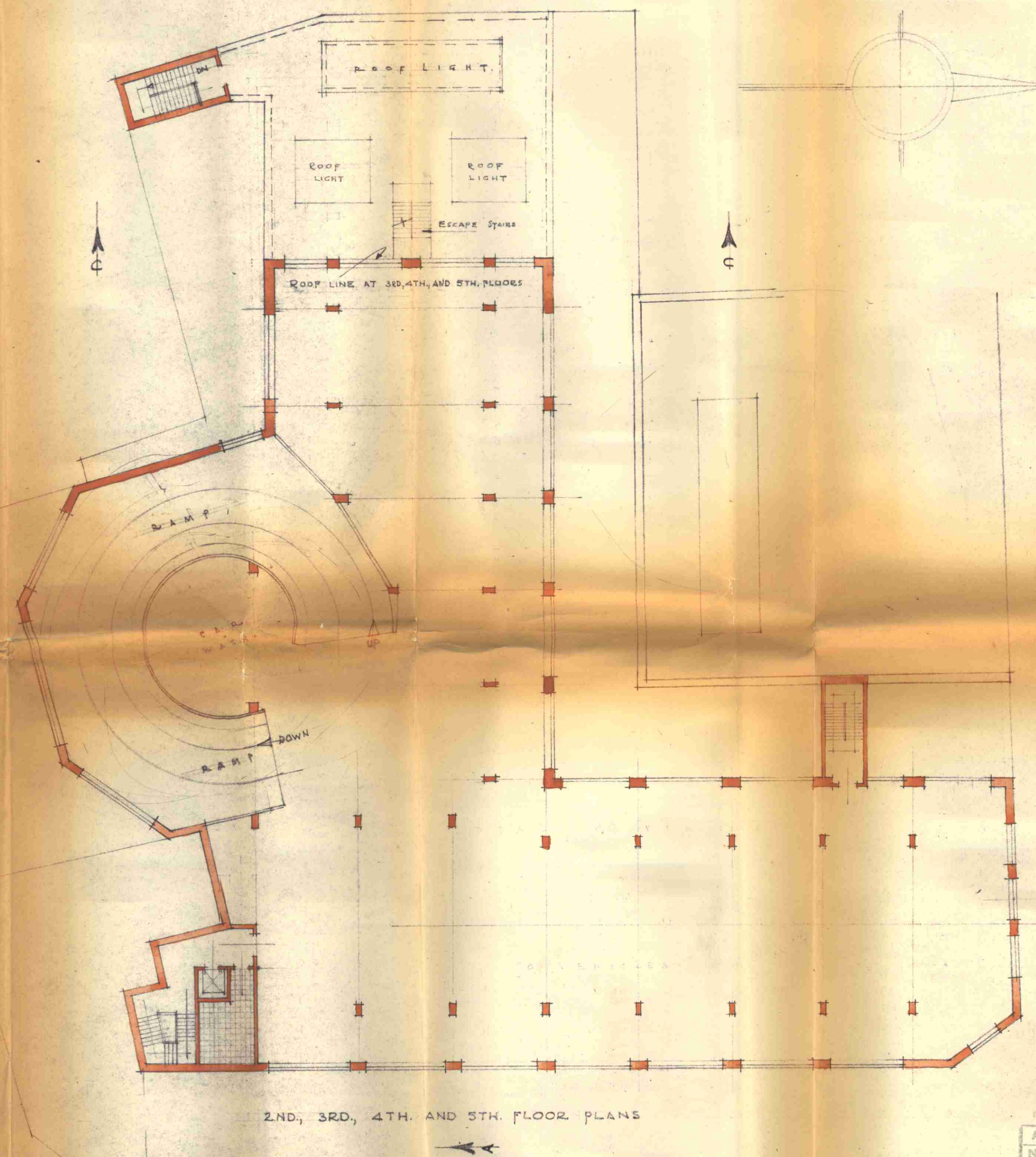
PROPOSED DEVELOPMENT  
Nos 67-87 HAMPSTEAD RD. Nos 146-152 DRUMMOND ST.  
& Nos 7-15 WILLIAM ST. N.W.I.

ASSOCIATED ARCHITECTS  
E. A. STONE, TOMS & PARTNERS 28 SOUTH AUDLEY STREET, LONDON W.1.  
LESLIE C. NORTON 4 ST GEORGE STREET, HANOVER SQUARE, W.1.

ARCHITECT L.C.C.  
No. 17812  
SHOW  
3 DEC 1954

DRAWING No 278/3  
SCALE - 1/16" TO ONE INCH  
DATE NOV. 1954.





2ND, 3RD, 4TH. AND 5TH. FLOOR PLANS

PROPOSED DEVELOPMENT  
 NOS 67-87 HAMPSTEAD RD, NOS 146-152 DRUMMOND ST.  
 & NOS 7-15 WILLIAM ST. N.W.1.

DRAWING NO 273/4  
 SCALE 1/16" = 1'-0" TO ONE INCH.  
 DATE NOV 1954.

ASSOCIATED ARCHITECTS  
 E. A. STONE, TOMS & PARTNERS 28 SOUTH AUDLEY STREET, LONDON W.1.  
 LESLIE C. NORTON 4 ST. GEORGE STREET, HANDYER SQUARE W.1.

ARCHITECT L.C.C.	
No. 17812	
SHOW	
3 DEC 1954	
SEC.	REF. TO
ACK'D	