

ELEVATION F-F

ELEVATION A-A

VENTILATION SLOTS IN FASCIA AS REQUIRED.  
FASCIA IN LAMINATED PLASTIC.

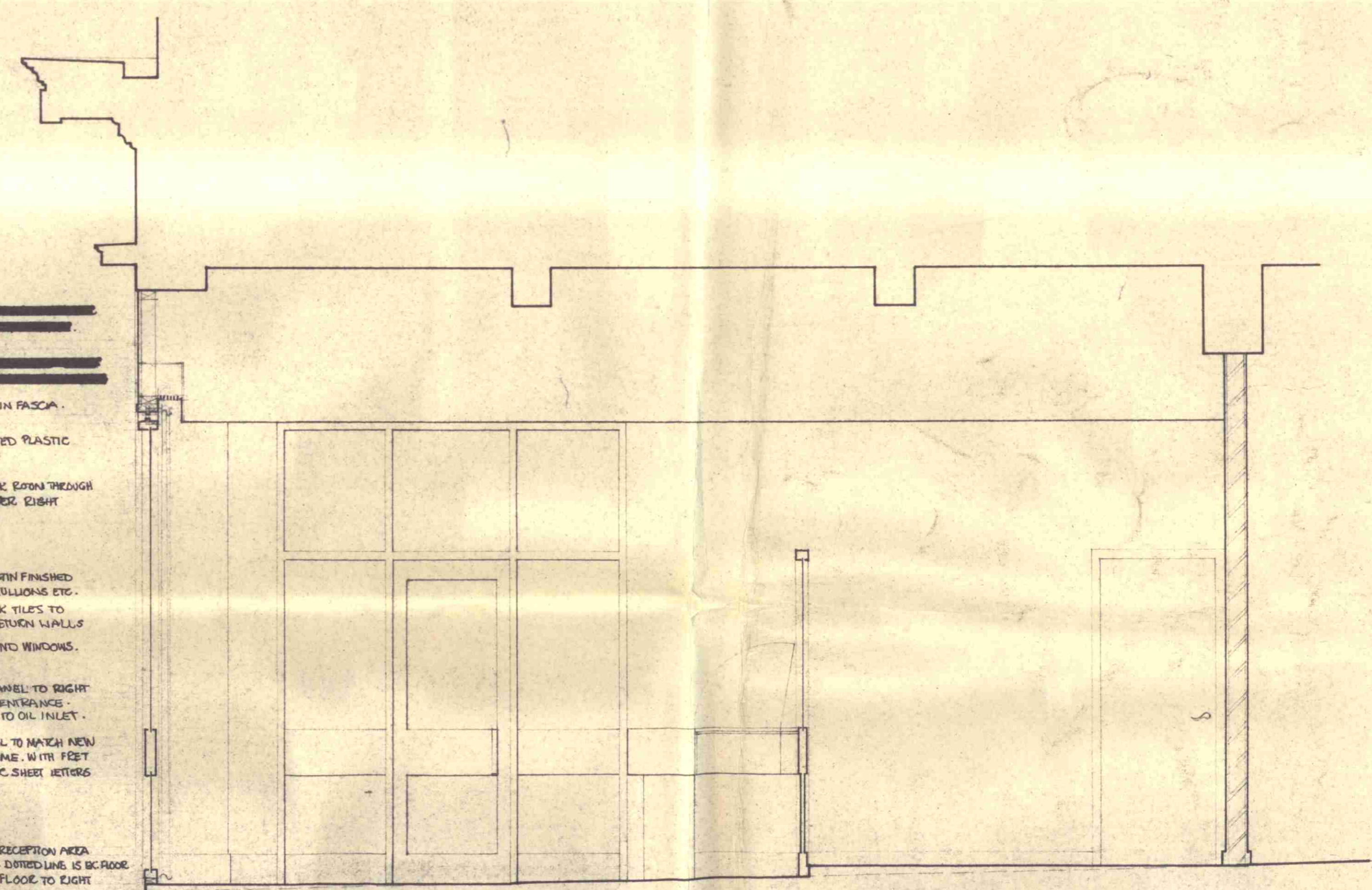
VENTILATION TO STOCK ROOM THROUGH GLASS LOUVRES OVER RIGHT HAND ENTRANCE.

BRASS PRESSED SATIN FINISHED SPANLESS STEEL MULLIONS ETC. HORIZONTAL HORIZONTAL TILES TO SIDE ENTRANCE RETURN WALLS. NET CURTAINS BEHIND WINDOWS.

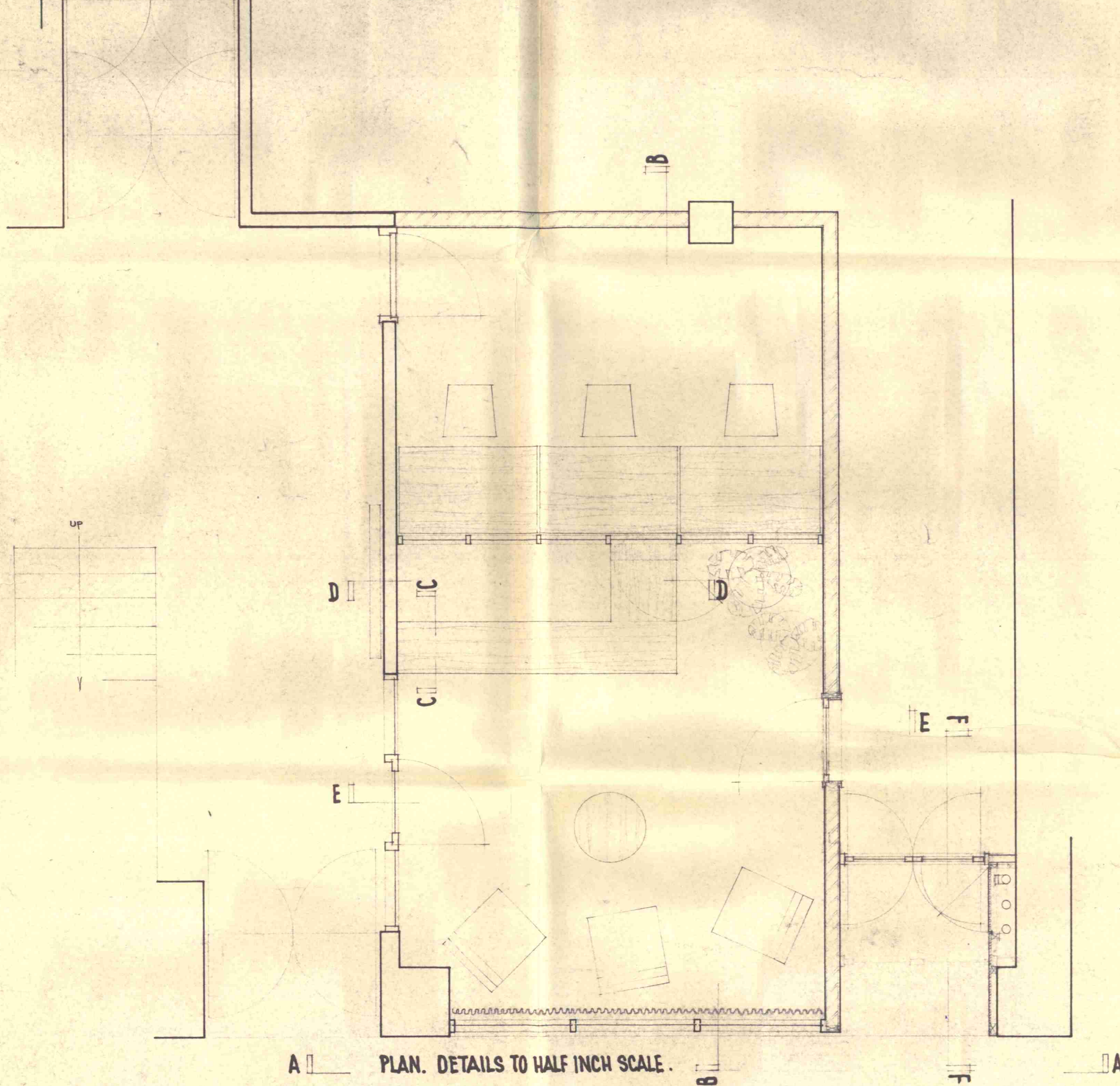
SPANLESS STEEL PANEL TO RIGHT ENTRANCE TO SUITE ENTRANCE WITH ACCESS DOOR TO OIL INLET.

MAROGANY IN-D-RAIL TO MATCH NEW SIDE DOORS + FRAME. WITH FEET CUT APPLIED ACRYLIC SHEET LETTERS IN-BACK.

BUILD UP FLOOR IN RECEPTION AREA + OFFICE AS SHOWN. DIRECTION IS BC FLOOR TERRAZZO PLINTH + FLOOR TO RIGHT ENTRANCE.



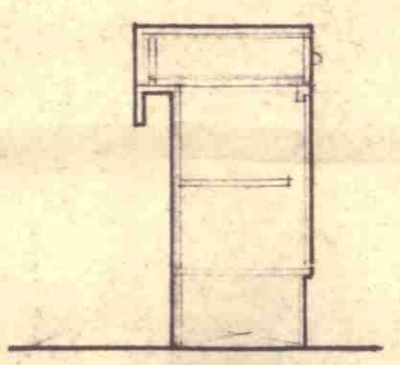
SECTIONAL ELEVATION B-B.



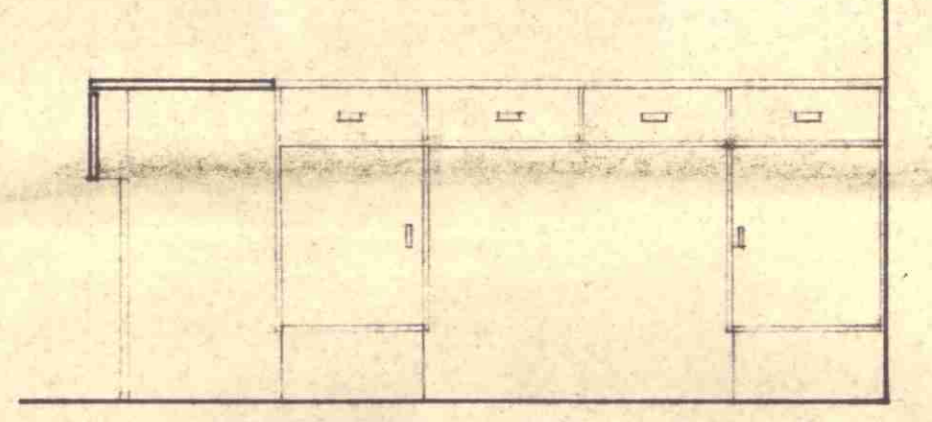
PLAN. DETAILS TO HALF INCH SCALE.

MAROGANY TOP TO RECEPTION DESK.  
MAROGANY FRONT RAIL.

CARPET FRONT TO MATCH CARPET TO RECEPTION AREA.



SECTION C-C.



SECTIONAL ELEVATION D-D.

4"x2" STUDING FACED BOTH SIDES WITH 1/2" PLASTER BOARDS.

ACOUSTIC TILE CEILING SUSPENDED ON METAL HANGERS.

REMOVE PART OF BRICK WALL AND REPLACE WITH SCREEN + LINING.

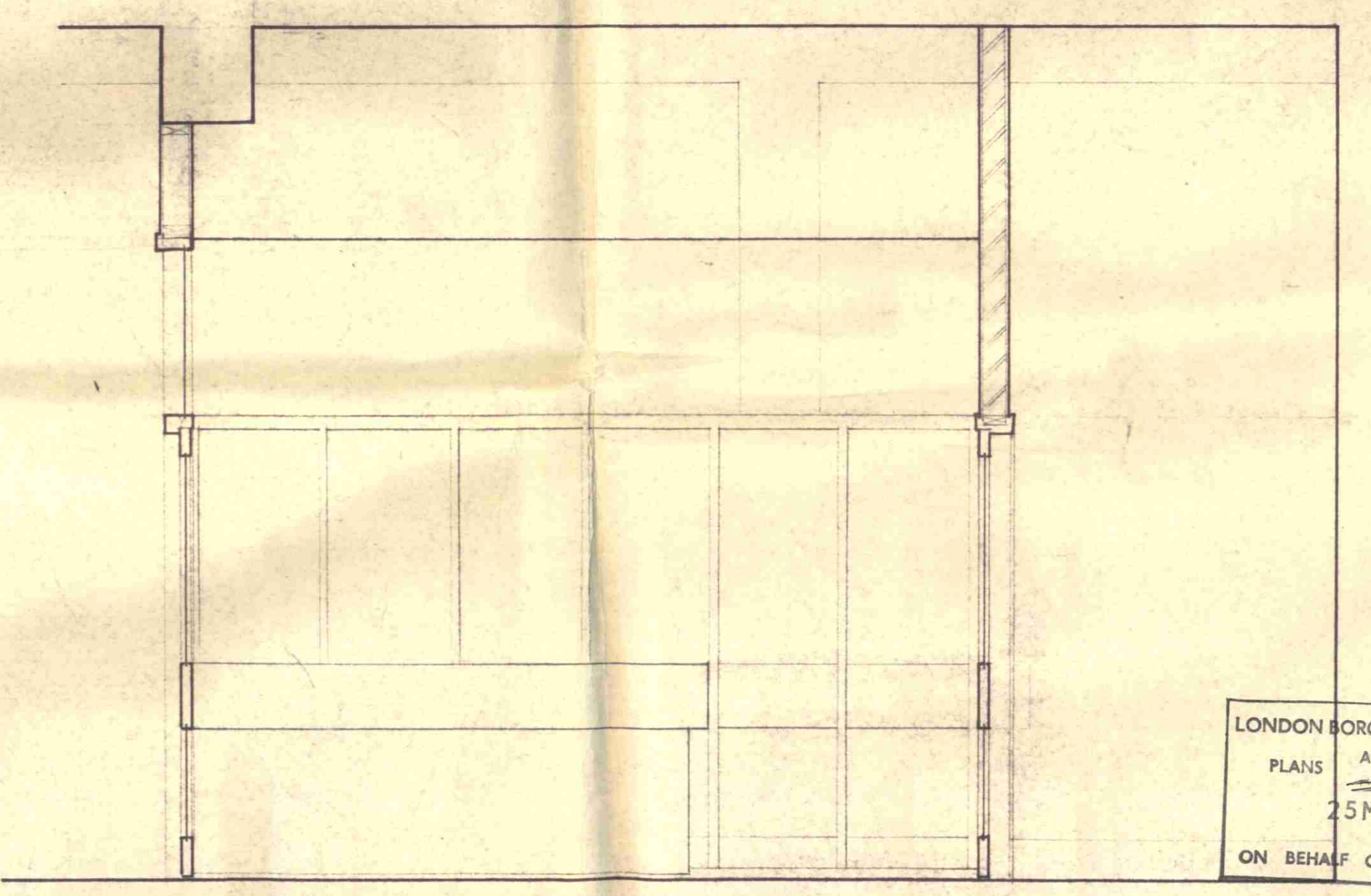
VINYL WALL COVERING TO WALLS OF RECEPTION AREA AND OFFICE.

FULL HEIGHT SCREEN IN MAROGANY GLAZED IN WIPED GLASS TO HALF HOUR FIRE STANDARDS.

LOW HEIGHT PARTITION IN MAROGANY GLAZED IN OBSCURED GLASS.

RECEPTION IN APPLIED ACRYLIC SHEET LETTERS TO SCREEN DOOR.

ENTRANCE DOORS TO BE AS NEAR AS POSSIBLE TO STREET. CONSISTENT WITH CLEARING OIL PIPES.



SECTIONAL ELEVATION E-E.

LONDON BOROUGH OF CAMDEN  
PLANS APPROVED  
25 MAY 1971  
ON BEHALF OF THE COUNCIL

GTP/W2/11/c/10644