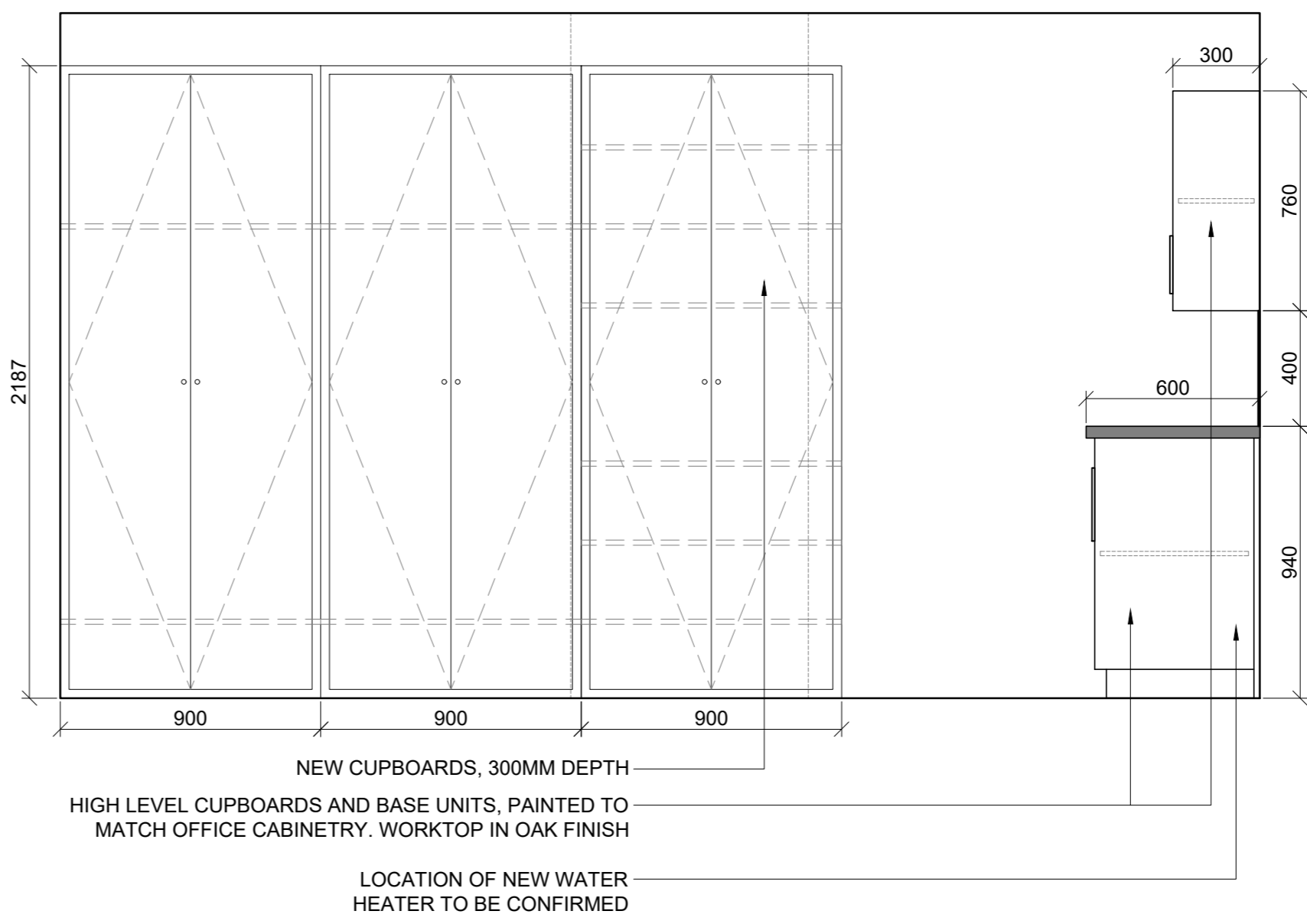


HIGH LEVEL CUPBOARDS AND BASE UNITS, PAINTED TO MATCH OFFICE CABINERY. WORKTOP IN OAK FINISH
 NABIS REVERSIBLE INSET SINK 1.0 BOWL WITH ONE TAP HOLE 950 X 508MM STAINLESS STEEL. REF. 62512
 NEW SPLASHBACK
 NEW MICROWAVE
 FRIDGE: ZANUSSI ZRG11600WA (847H x 494W x 494D)



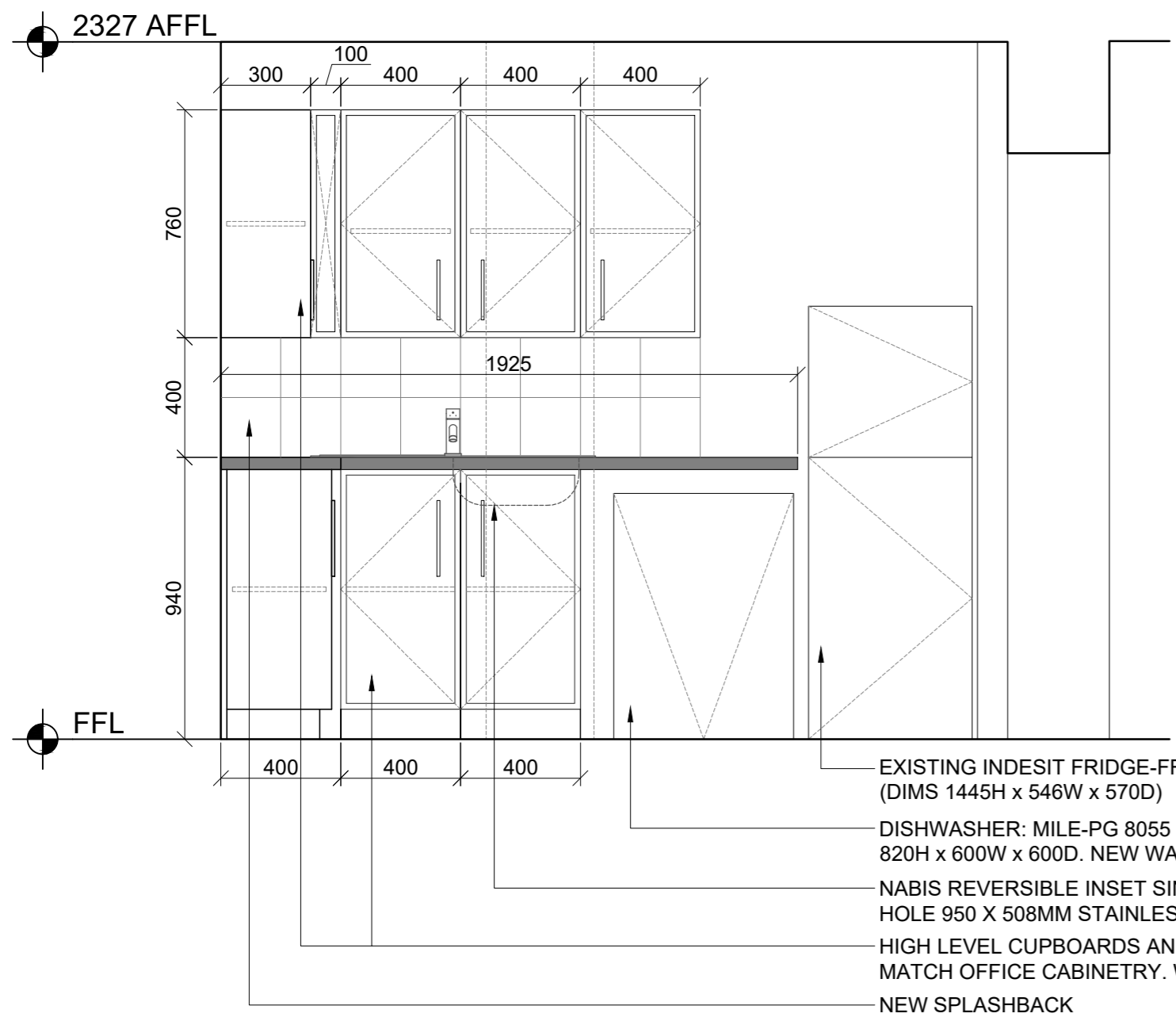
NEW CUPBOARDS, 300MM DEPTH
 HIGH LEVEL CUPBOARDS AND BASE UNITS, PAINTED TO MATCH OFFICE CABINERY. WORKTOP IN OAK FINISH
 LOCATION OF NEW WATER HEATER TO BE CONFIRMED



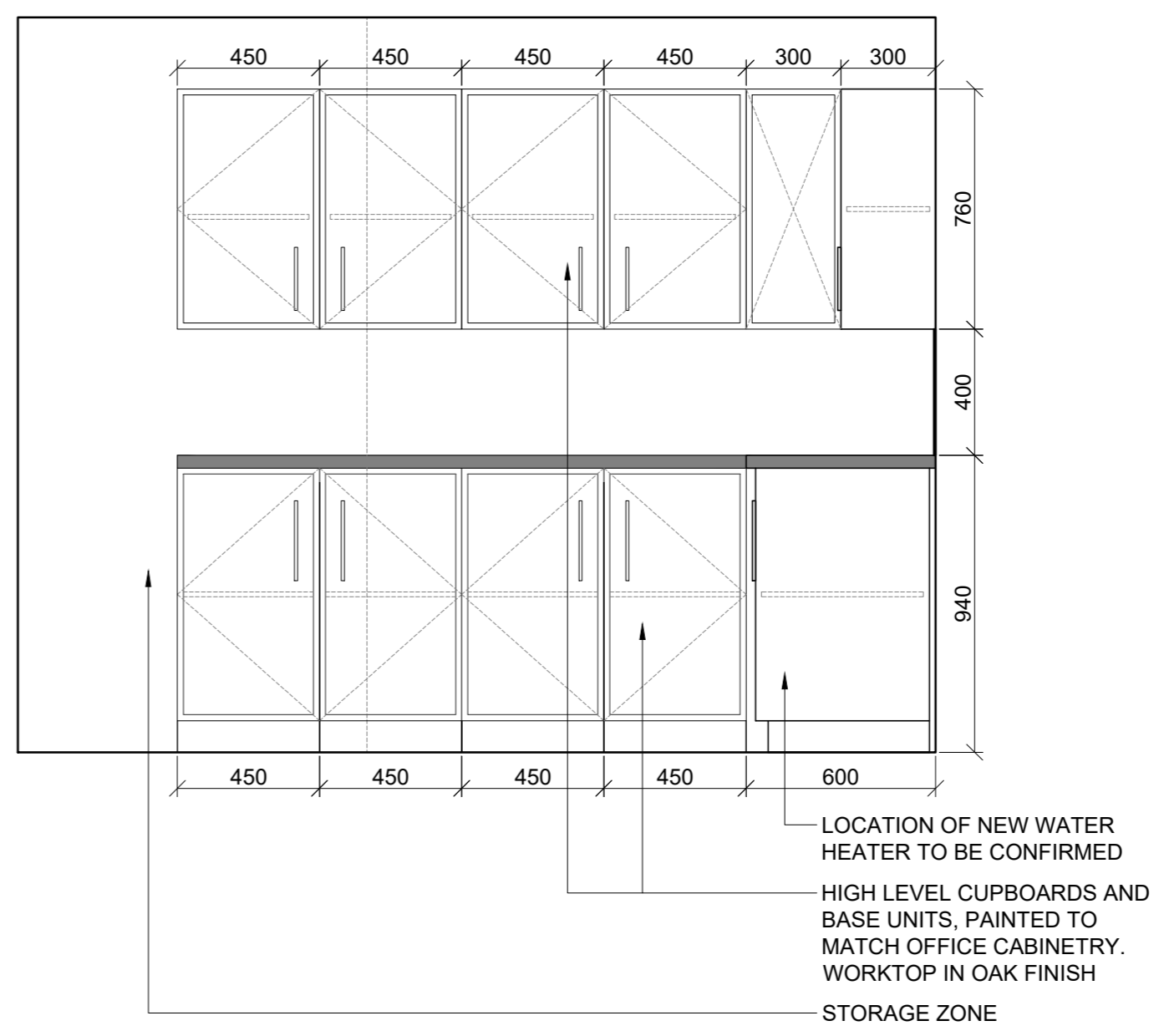
NOTES
ADDRESS
 37 NEAL STREET
 LONDON
 WC2H 9PR
 BASED ON PARTIAL SURVEY TO CONFIRM OUTLINE PARAMETERS OF BUILDING. VERIFY ALL DIMS ON SITE.
SCOPE OF WORKS
 INTERNAL WORKS: NEW BALUSTERS AND HANDRAIL TO STAIRCASE LEADING TO BASEMENT. NEW FIRE RATED PARTITION AND DOOR SEPARATING STOCKROOM. NEW WC. NEW KITCHENETTES IN BASEMENT. NEW PLUMBING CONNECTIONS TO EXISTING SVP AND MECHANICAL EXTRACT FROM WC.
 SHOPFRONT: NEW PAINT FINISH TO SHOPFRONT FACADE. NEW FASCIA SIGNAGE AND BLADE SIGNAGE IN ACCORDANCE WITH LANDLORD GUIDELINES. REFER TO DRAWINGS A200, A201, A202.
 POWER AND PLUMBING REQUIREMENTS TO BE COORDINATED BY CLIENT AND ELECTRICIAN/PLUMBER

1 INTERNAL ELEVATION 1
 SCALE: 1:20 @ A2

2 INTERNAL ELEVATION 2
 SCALE: 1:20 @ A2



EXISTING INDESIT FRIDGE-FREEZER (DIMS 1445H x 546W x 570D)
 DISHWASHER: MILE-PG 8055 SPEED DIMENSIONS: 820H x 600W x 600D. NEW WATER HEATER.
 NABIS REVERSIBLE INSET SINK 1.0 BOWL WITH ONE TAP HOLE 950 X 508MM STAINLESS STEEL. REF. 62512
 HIGH LEVEL CUPBOARDS AND BASE UNITS, PAINTED TO MATCH OFFICE CABINERY. WORKTOP IN OAK FINISH
 NEW SPLASHBACK



LOCATION OF NEW WATER HEATER TO BE CONFIRMED
 HIGH LEVEL CUPBOARDS AND BASE UNITS, PAINTED TO MATCH OFFICE CABINERY. WORKTOP IN OAK FINISH
 STORAGE ZONE

3 INTERNAL ELEVATION 3
 SCALE: 1:20 @ A2

4 INTERNAL ELEVATION 4
 SCALE: 1:20 @ A2

BUILDING CONTROL
LISTED BUILDING CONSENT

P0	LISTED BUILDING+ADVERTISING	NF	PD	07/03/2019
P0	BUILDING CONTROL	NF	PD	06/03/2019
Rev	Description	By	Check	Date

Hyphen
 39 Moreland Street
 London, EC1V 8BB
 +44 20 7940 3170
 info@hyphen.archi

Client
The Cambridge Satchel Company

Project
 The Cambridge Satchel Company
 Neal Street

Drawing
Internal Elevations
Kitchenettes

Scale	Date	Author	Checked
1:20 @ A2	26.02.2019	NF	PD
Workstage	Status		
3	PLANNING		
Hyphen Project No.	Drawing No.	Revision	
6698	A305	P0	

Scale only for planning purposes
 Report any discrepancies to the author
 © The Hyphen Group Ltd