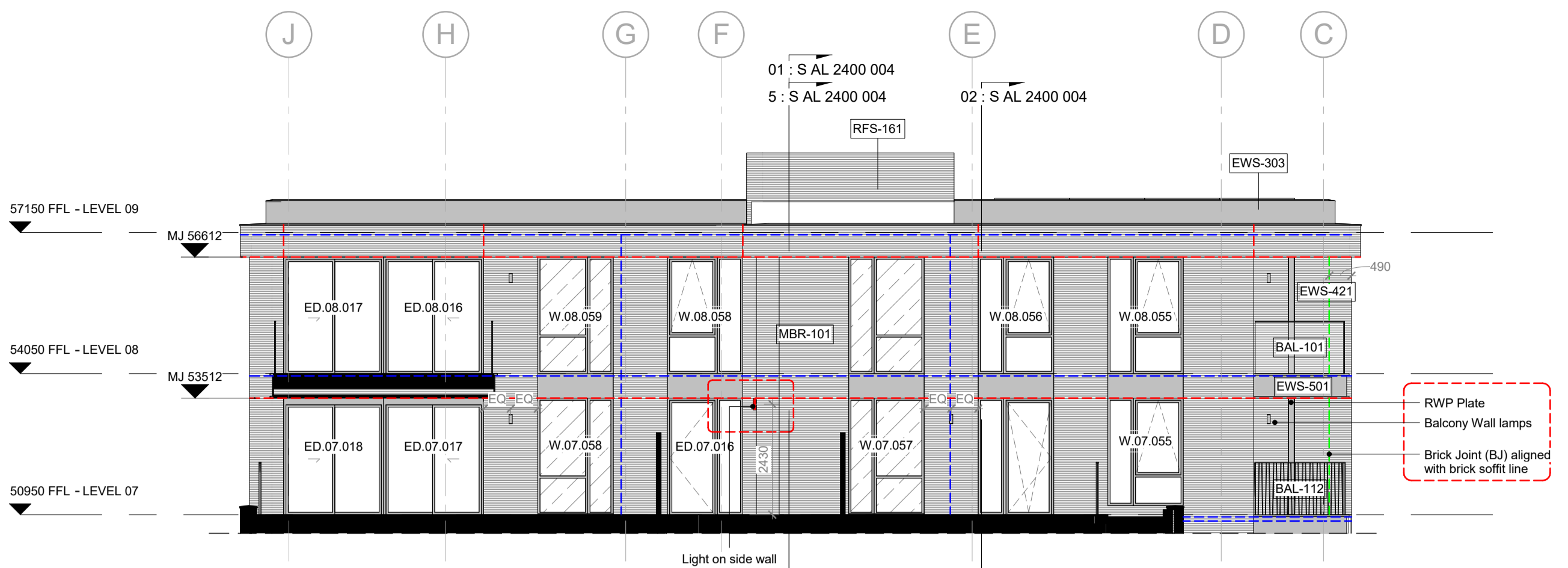
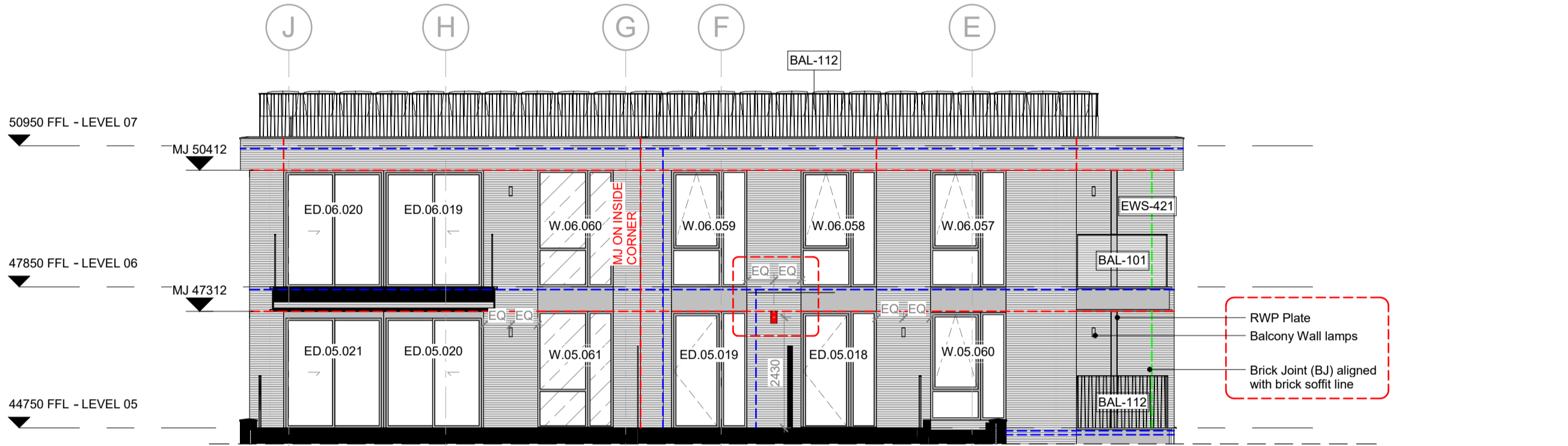


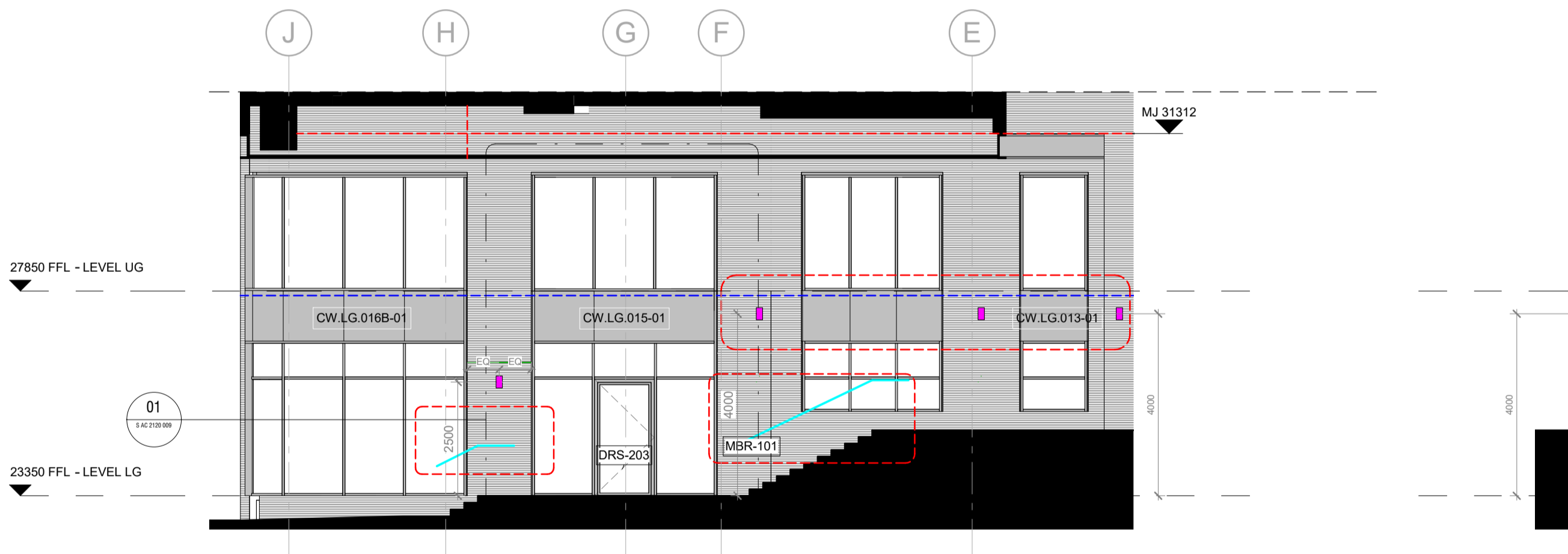
All dimensions are in mm unless otherwise stated
 All dimensions to be verified on site before proceeding with the work
 Any discrepancies to be notified in writing to architect immediately
 All boundaries indicative only and to be confirmed by others



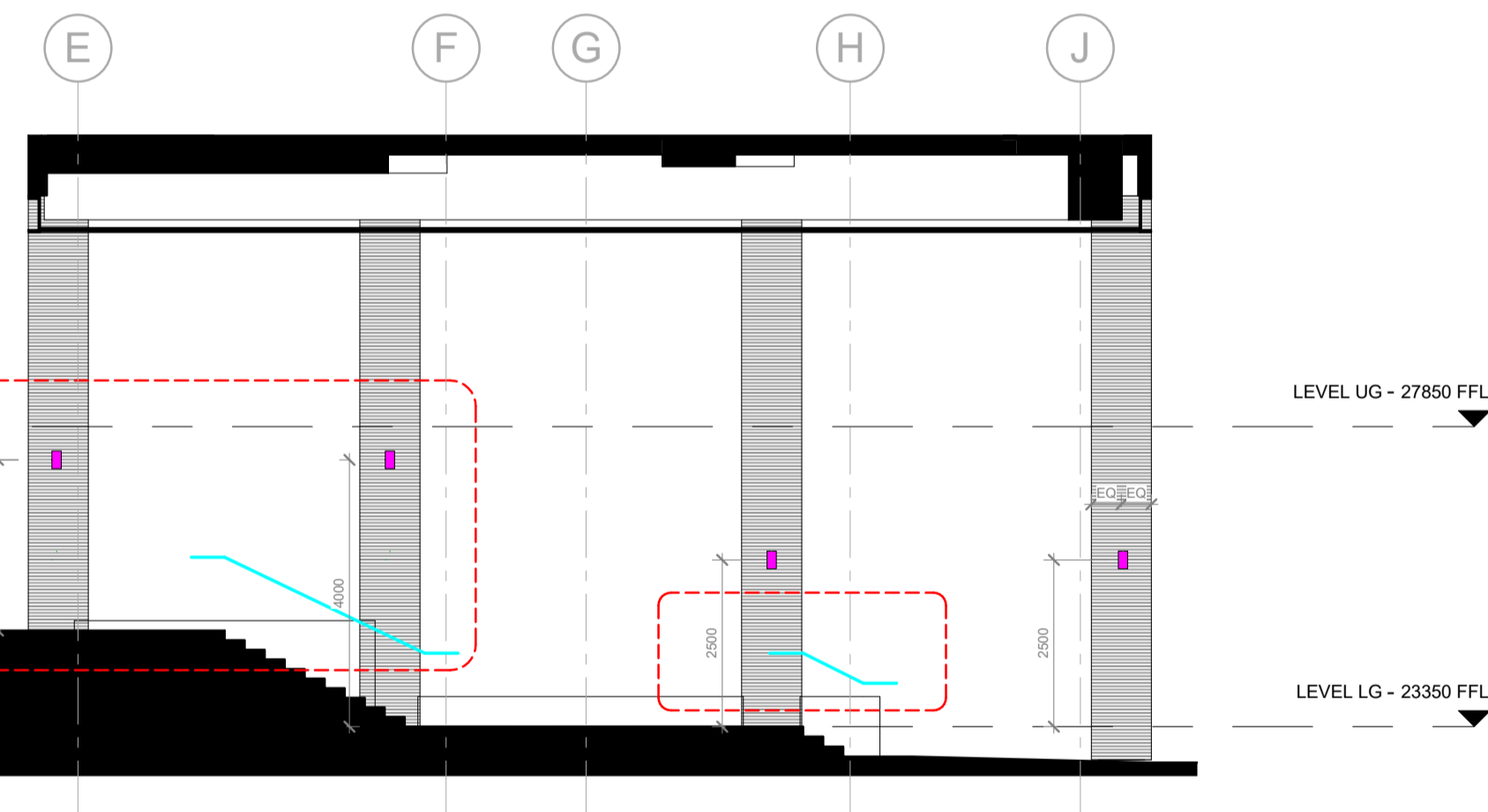
01 - South Block Upper Terrace Elevation



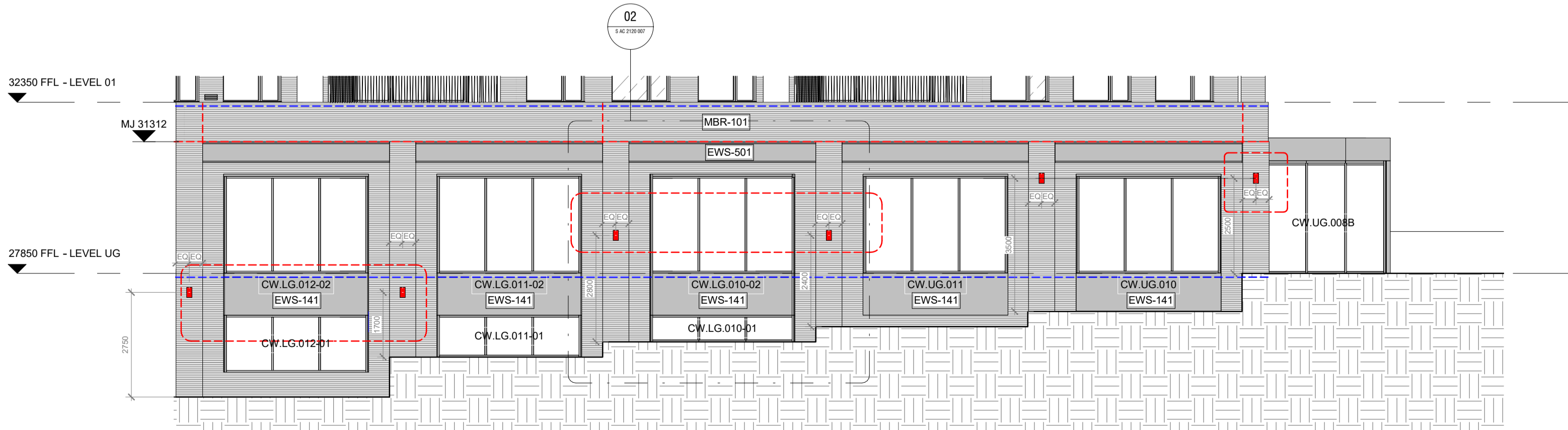
02 - South Block Mid Terrace Elevation



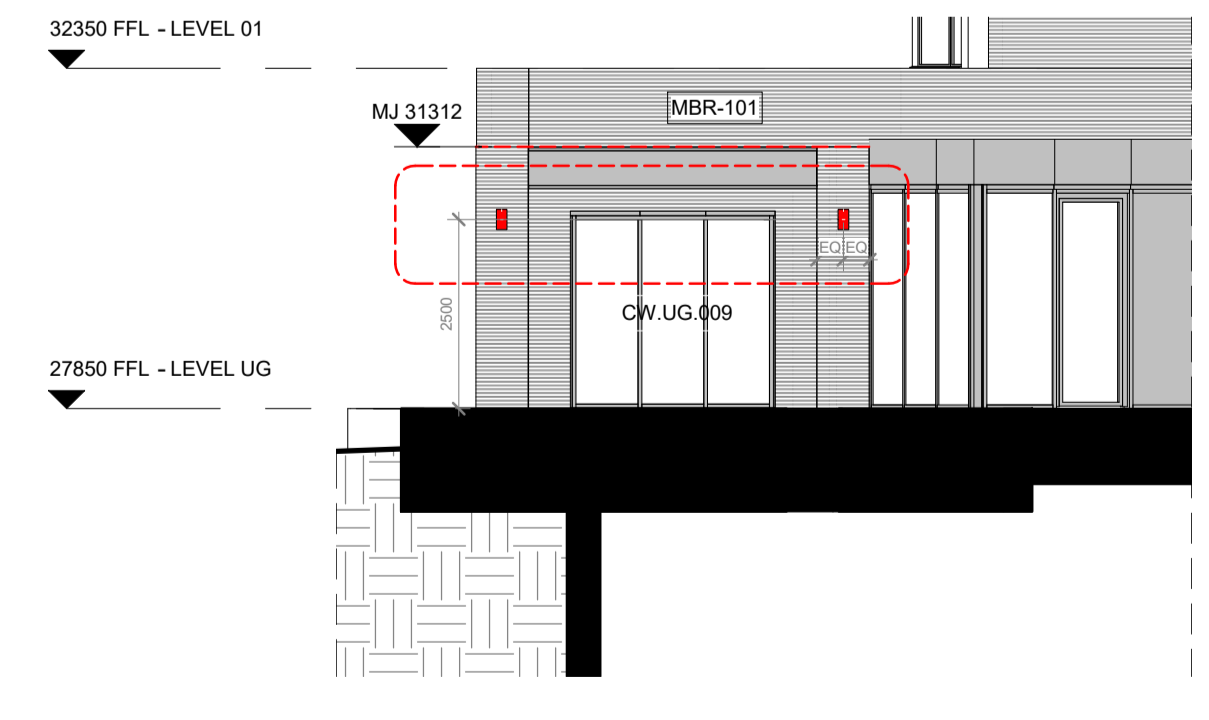
03 - South Block Lower level Elevation (Behind colonnade)



06 - South Block Lower level Elevation (Behind colonnade-opposite side)



04 - South Block Lower Level NE Elevations



05 - South Block North Bay Elevation



NOTE
 Contractor drawings and samples to be submitted for approval prior to fabrication.
 All dimensions are in millimeters unless otherwise noted.
 All dimensions are to be checked on site and any discrepancies reported to the Architect.

SSL - Structural Slab Level
 SFL - Scribed Floor Level - Top of the Scribed
 FFL - Finish Floor Level (including finish eg: carpet or tiles)

This drawing must be read in conjunction with all relevant Specifications and Consultant Drawings. Specific drawing information can be found under the following drawing series:

MBR - 101	Facing Brickwork Randers Teg1 160 Ultima
MBR - 112	Facing Brickslip Soldier Course Randers Teg1 160 Ultima
BAL - 102	Frameless Glass Balustrade
BAL - 112	Metal Balustrade RAL 9005 Matt
EWS - 162	Metal Panel RAL 9005 Matt
EWS - 142	Metal Panel with Louvre RAL 9005 Matt
EWS - 201	Metal Panel Cladding, Penthouse
EWS - 501	Metal Profile RAL 9005 Matt
EXT - 302	Privacy Screens RAL 9005 Matt. Mesh and profile TBC by the employer.
EWS - 721	White Render
AMW - 311/312	Enclosure for services equipment RAL 9005 Matt. Profile TBC by the employer.
---	Fire Compartment. Refer to the Engineer's Drawings.
---	Indicative Brick Movement Joint. TBC by Specialist.
---	Indicative Brick Joint aligned with brick soffit on balconies.
---	Sparrow Nest Box W430 x H245 x D200 mm
---	Swift Nest Box W980 x H150 x D150 mm
---	Enclosed Bat Box (Large) W215 x H290 x D105 mm
---	Wall Mounted Lamp 1869LM H265 mm Diameter 140 mm
---	Wall Mounted Lamp 133LM H170 mm Diameter 70 mm
---	Wall Mounted Lamp 733LM - Road Asymmetric - H265 mm Diameter 140 mm
---	Wall Mounted, Lowe Pole 319LM H320 x W150 mm
---	Wall Mounted Lamp on Balconies. Fixing point 2100 mm from FFL.
---	LED light strip integrated into metal handrails shown indicatively.

Note:
 Movement Joints on 'Inside Corners' setting out, refer to Reference Plans under 0010 Series.
 RWP Plates, Brick Joints and Wall Lamps on Balconies setting out needs to be read together with 0010 Series and 3600 Series.

04	07.02.19	Lights added/deleted/moved as per client comments, see revision clouds; LED strip incorporated on handrails, see revision clouds; bottom grilles have moved down, see revision clouds; MJ amended as per Client and Structural Engineer comments. Notes added on MJ in order to clarify real position; Brick Joints/Wall Lamps/RWP plates have been incorporated on Balconies; Key and Notes have been updated, see revision clouds.	AO
03	12.12.18	Movement joints added as per Walsh drawings; Sliding doors into balconies revised as per client change; General updates in line with updates on external openings.	AO
02	16.02.18	General updates as per revision clouds, material key added to the elevations.	GF
01	13.10.17	Stage 04 Main Building Submission	GF
-	17.05.17	Stage 03 Main Building Pack	GF
REV	DATE	NOTES	INT

STAGE 05 - CONSTRUCTION

HUTCHINSON & PARTNERS
 3-14 The Record Hall, 16-16A Baldwin's Garden, London, EC1N 7RJ
 1.020 3176 8192 e.info@hutchinsonandpartners.com w.www.hutchinsonandpartners.com

JOB TITLE
Stanley Sidings, 101 Camley Street, Camden

DRAWING TITLE / LOCATION
South Block Envelope - Call outs

DRAWN BY	CHECKED	SCALE	STATUS
MH	DMV	1:100@A1 / 1:200@A3	STAGE 05
PROJECT	DRAWING NO		REVISION
16022	S AL 0020 005		04

CLIENT

