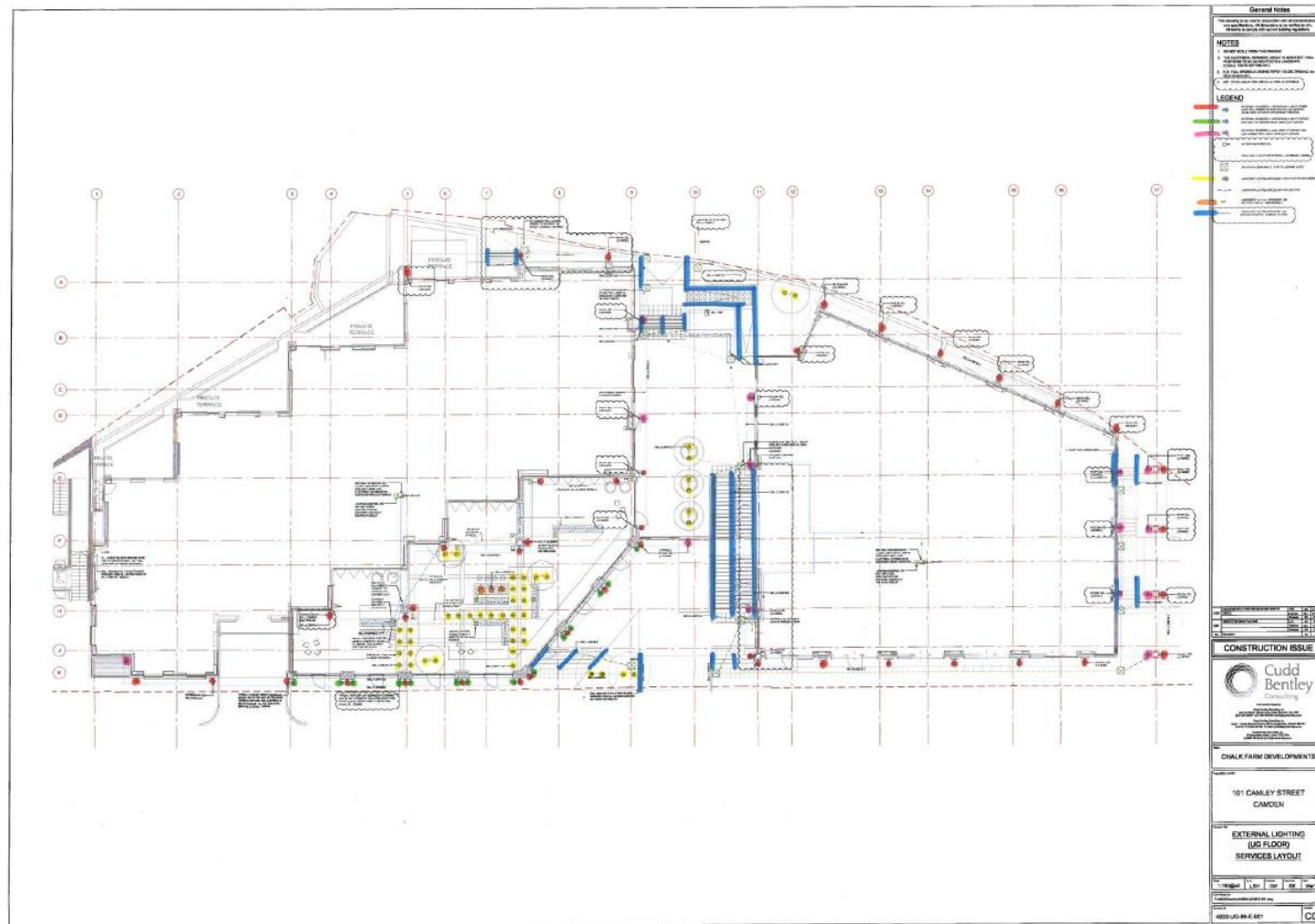









Lighting within the Public Realm




- 




EXTERNAL CYLINDRICAL UP/DOWN WALL LIGHT: POWER ELLIPTICAL (SIDEWAYS LENS) IP65 28W LED, NARROW BEAM, 3000K (STD:50/50 UP/DOWN DISTRIBUTION)
- 


EXTERNAL CYLINDRICAL UP/DOWN WALL LIGHT: FEATURE IP65 3.8W LED, NARROW BEAM, 3000K (1/3 UP / 2/3 DOWN)
- 


EXTERNAL CYLINDRICAL WALL LIGHT UP / DOWN: 17.5W LED ASYMMETRICAL BEAM, 3000K (1/3 UP / 2/3 DOWN)
- 


LANDSCAPE LIGHTING SPECIALIST LED UPLIGHTER IN PLANTER
- 

(LP)

LANDSCAPE LIGHTING SPECIALIST LED LIGHTING PENDANT (ON PERGOLA)
- 


LANDSCAPE LIGHTING SPECIALIST LED INTEGRATED METAL HANDRAIL SYSTEM

(Full marked up drawing & data sheets with keys attached)

General Notes

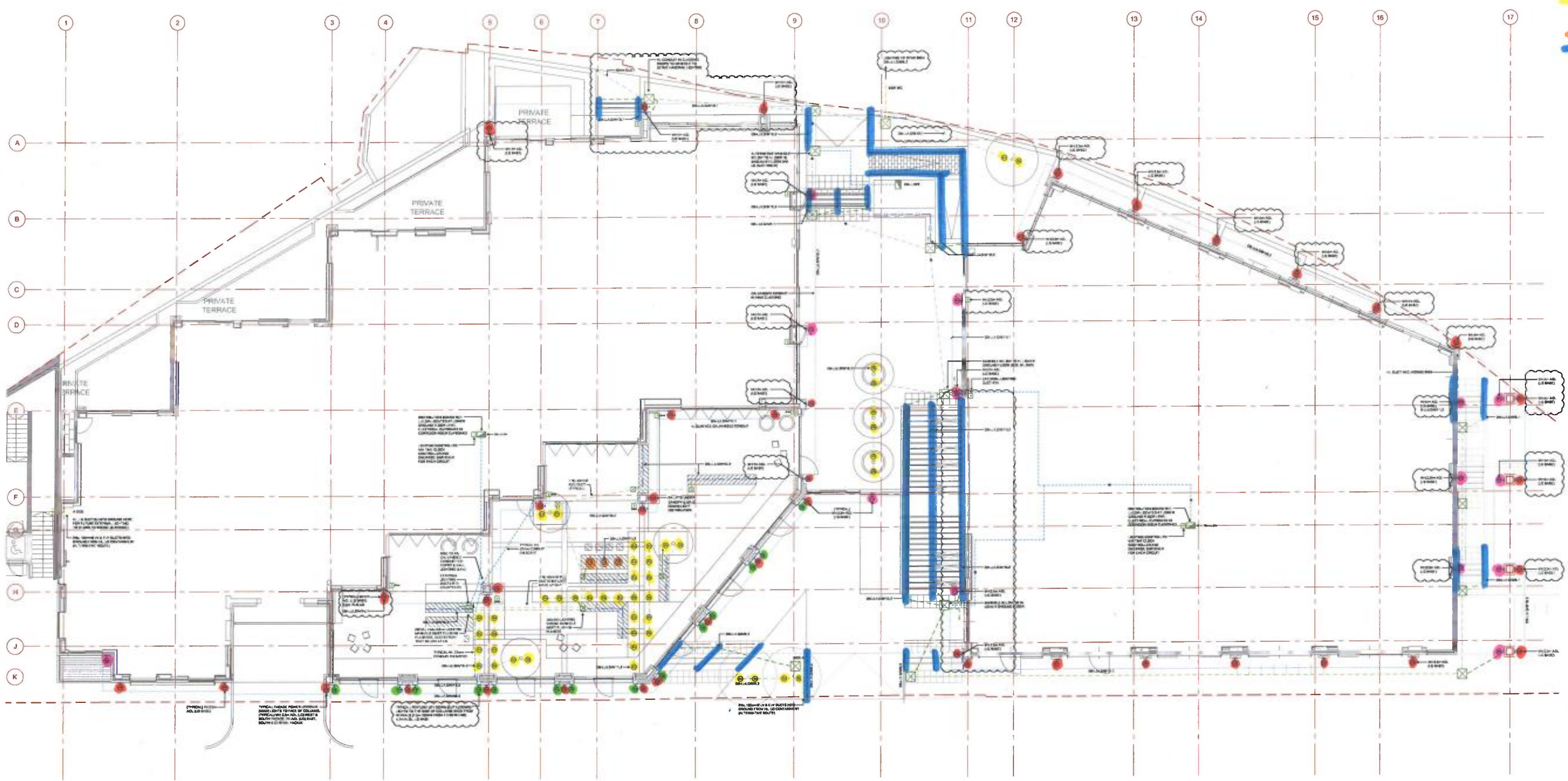
This drawing to be read in conjunction with all standard details and specifications. All dimensions to be verified on site. All works to comply with current building regulations.

NOTES

- DO NOT SCALE FROM THIS DRAWING
- THE ELECTRICAL SERVICES LAYOUT IS INDICATIVE. FINAL POSITIONS TO BE AS ARCHITECT'S & LANDSCAPE CONSULTANTS SETTING OUT.
- FOR FULL SYMBOLS LEGEND REFER TO C&E DRAWING: NOT TO BE USED FOR ELECTRICAL SERVICES

LEGEND

- 1.00m DUCT FOR EXTERNAL LIGHTING WIRING
- 2.00m DUCT FOR EXTERNAL LIGHTING WIRING
- 3.00m DUCT FOR EXTERNAL LIGHTING WIRING
- 4.00m DUCT FOR EXTERNAL LIGHTING WIRING
- 5.00m DUCT FOR EXTERNAL LIGHTING WIRING
- 6.00m DUCT FOR EXTERNAL LIGHTING WIRING
- 7.00m DUCT FOR EXTERNAL LIGHTING WIRING
- 8.00m DUCT FOR EXTERNAL LIGHTING WIRING
- 9.00m DUCT FOR EXTERNAL LIGHTING WIRING
- 10.00m DUCT FOR EXTERNAL LIGHTING WIRING
- 11.00m DUCT FOR EXTERNAL LIGHTING WIRING
- 12.00m DUCT FOR EXTERNAL LIGHTING WIRING
- 13.00m DUCT FOR EXTERNAL LIGHTING WIRING
- 14.00m DUCT FOR EXTERNAL LIGHTING WIRING
- 15.00m DUCT FOR EXTERNAL LIGHTING WIRING
- 16.00m DUCT FOR EXTERNAL LIGHTING WIRING
- 17.00m DUCT FOR EXTERNAL LIGHTING WIRING



NO.	DESCRIPTION	DATE	BY	CHECKED BY
1	ISSUED FOR TENDER	15/03/17	CM	GK
2	REVISED FOR CONSTRUCTION	15/03/17	CM	GK
3	REVISED FOR CONSTRUCTION	15/03/17	CM	GK
4	REVISED FOR CONSTRUCTION	15/03/17	CM	GK

CONSTRUCTION ISSUE

Cudd Bentley Consulting

Cudd Bentley Consulting Ltd
 101 Camley Street, Camden, London, N1C 4AG
 Tel: +44 (0)20 7493 9600
 Fax: +44 (0)20 7493 9601
 Email: info@cuddbentley.com

CHALK FARM DEVELOPMENTS

101 CAMLEY STREET
CAMDEN

**EXTERNAL LIGHTING
(UG FLOOR)
SERVICES LAYOUT**

Scale:	1:100@A0	Drawn:	LSH	Checked:	CM	Approved:	GK	Date:	Mar'17
Drawn by:	LSH								
Checked by:	CM								
Approved by:	GK								
Project No:	4933-UG-96-E-001								
Sheet No:	C02								