





## 2.1.6 The Proposal

### Materials

---

The new building will employ a palette of robust natural materials which will compliment those of the Conservation Area – handmade bricks will be used to the facades of the new building. These will be made at Bulmer Brick & Tile Ltd and laid in an English Bond. The pitched roofs and doors will be in a standing seam bronze with bronze heritage windows and skylights to match.

The Conservation Area Audit also notes that where extensions and alterations are permitted (including rear extensions), the quality of design will be important. It is our ambition that this refurbishment and addition will be of the highest architectural quality, and in the future be an award winning building and a positive contributor to the Conservation area.

---

**LEFT**

**TOP:** Belsize Fire Station built 1912-1915

**BOTTOM:** Eton Garages - a mews within the conservation area containing residential and light industrial units.





## 2.1.7 The Proposal Material Palette

---

**OPPOSITE, TOP AND MIDDLE**  
EXTERNAL WALLS  
Handmade bricks with lime mortar

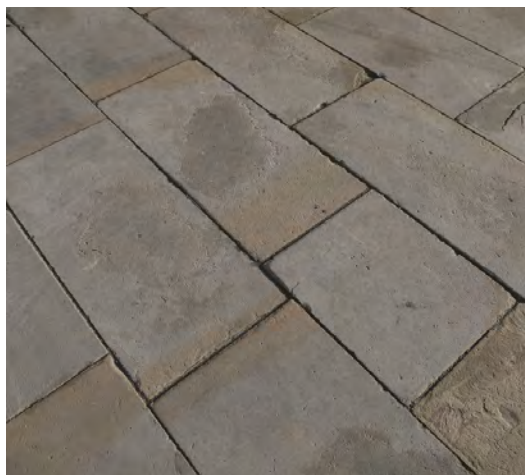
**OPPOSITE, BOTTOM LEFT**  
ROOFING  
Bronze standing seam roof and doors

**OPPOSITE, BOTTOM RIGHT**  
WINDOW FRAMES AND DOORS  
Bronze casements and sliding windows

**BELOW, TOP LEFT**  
FORECOURT PAVING  
Reclaimed cobbles

**BELOW, BOTTOM LEFT**  
FORECOURT PAVING  
York stone paving

**BELOW, BOTTOM LEFT**  
FORECOURT PAVING  
Granite setts to parking bays



















NO. 1 STEELE STUDIO:  
North-east elevation showing proposed materiality









NO. 1 STEELE STUDIOS:  
Front facing, North-east elevation from Haverstock Hill showing the proposal in  
context with existing trees shown

One can see the roof forms of the neighbouring studios through the trees









NO. 1 STEELE STUDIOS:  
Front facing, North-east elevation from Haverstock Hill showing the proposal  
in context without existing trees

This shows the view into the backland site - the visible roof forms of the  
adjacent studios leading back into the studio complex.













## JAMES GORST ARCHITECTS

35 Lamb's Conduit Street, London, WC1N 3NG  
0207 336 7140  
[david@jamesgorstarchitects.com](mailto:david@jamesgorstarchitects.com)

RIBA   
Chartered Practice