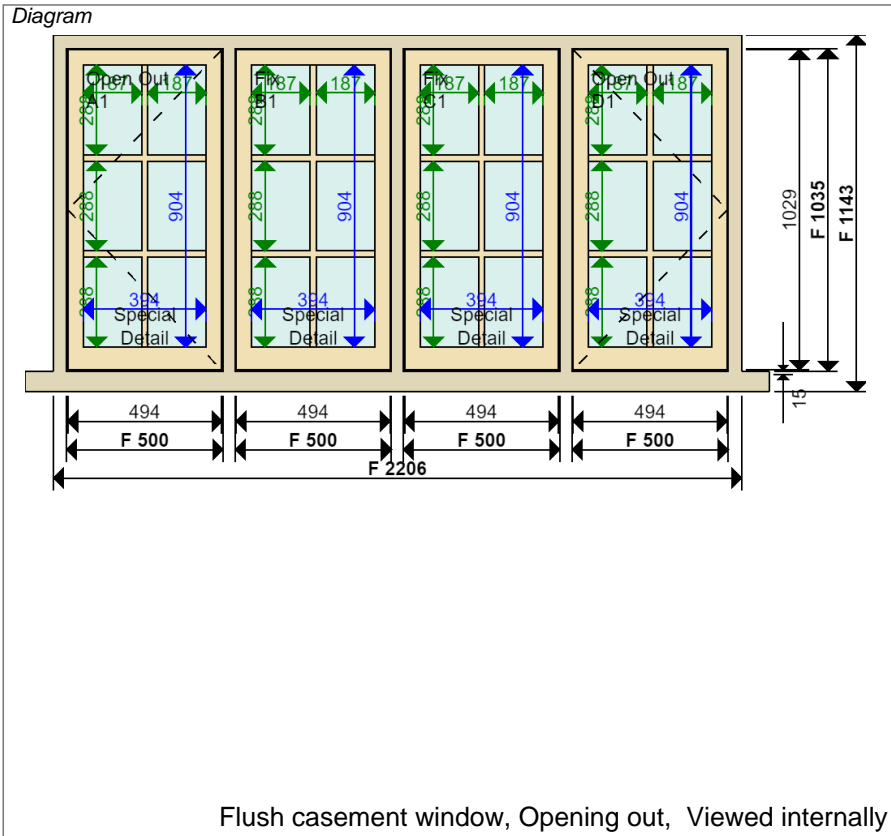




JOINERY DETAIL SHEET

1 Complete New Flush Casement Window (Non DocL)

Customer Mannatt	Job No D32923	Item No 1	Sheet 1 of 2
-----------------------------------	--------------------------------	----------------------------	-------------------------------



Flush casement window, Opening out, Viewed internally

Sectional Details	
Frame Stop	Pencil Bead
Finished Frame Head	95 x 58 mm
Finished Frame Jamb	95 x 58 mm
Finished Mullion	95 x 70 mm
Finished Cill	150 x 80 mm (90 mm horn)
	
Sash Head	50 mm
Sash Stile	50 mm
Sash Btm Rail (int)	75 mm Stepped
Sash Thickness	45 mm
	
Glazing Bar	20 mm with 4 mm Nib
Profile	Ovolo
Moulding Cutter	6 x 13 with 13 mm shoulder
Glazing Rebate	8 x 17 mm

Location Fourth Floor Rear Master Bedroom
--

Material Accoya sashes, Accoya frame, Hardwood cill	Quantity 1
--	-----------------------------

Ironmongery 2 x Casement Window Lock White 2 x Handle Casement Bulb End & Mortice Plate PB 6 x Hinge Butt PB 3 inch 2 x Lock Chubb Window Key 2 x Stay Casement Bulb End PB 12 inch

Glazing Single Glazed	
Case	4mm Low Iron
Dry Seal	White Tape Internally

Paint Finish Internal Standard White External Standard White

Production Notes * FRAMES PROTRUDING MULLION SECTION WITH OVOLO CORNER MOULDING EXTERNALLY, CASEMENTS SET BACK 20mm FROM FACE OF FRAME - SEE SHEET 2 OF 2. * FRAMES FINISHED FLUSH, NO STOPS. ADD LARGE STAFF BEAD IN PRODUCTION - SEE SHEET 2 OF 2. * SPECIAL CILL PROFILE - SEE SHEET 2 OF 2.

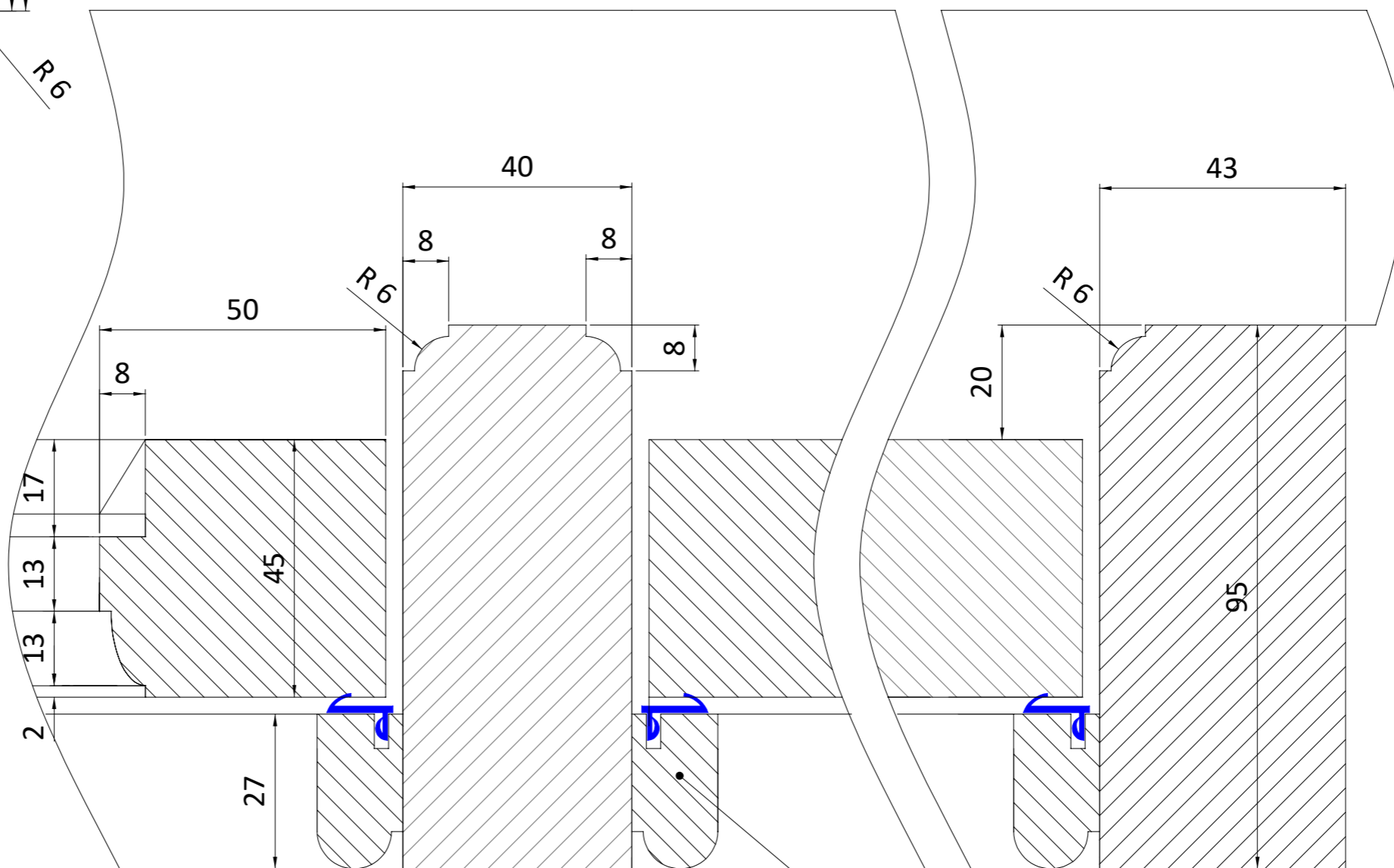
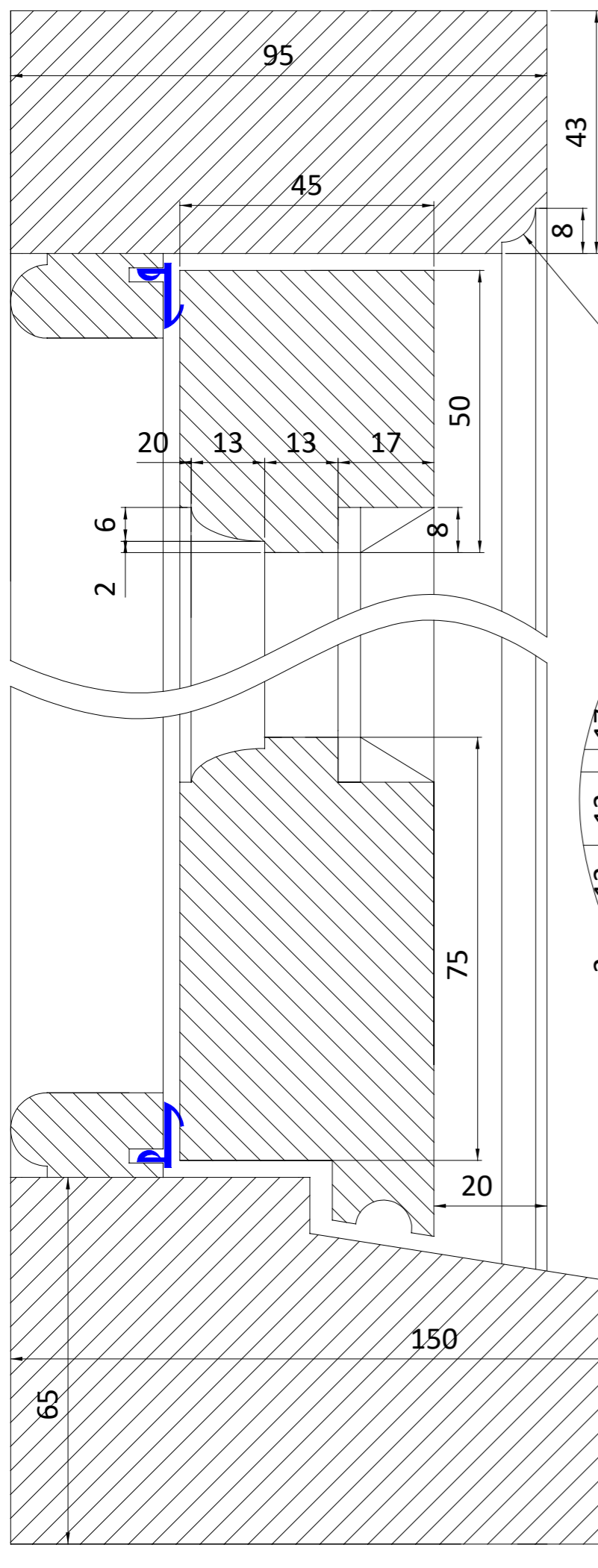
Installation Notes Installed: Externally 1. REMOVE EXISTING CASEMENT FRAME, LEAD WRAP PEELED BACK FROM BEHIND LINING. CUT BETWEEN EAVES MOULDING/CORNICE AND FRAME HEAD. TRY NOT TO DAMAGE EAVES MOULDING/CORNICE. 2. TUCK NEW FRAME HEAD BEHIND EAVES MOULDING/CORNICE. FIT LININGS. 3. FIT WINDOWBOARD, QUADS & SOFFIT BEHIND CURTAIN TRACK.

2 | 13 | 13 | 17

Job Tracking Order received: 16-01-2019 Sold by: Daniel Soady Surveyed by: Chris Jewiss	Print date: 22-01-2019 Last modified by: Chris Jewiss Last modified date: 22-01-2019
---	--

External Access: Cable Alarm:	Scaffold by Customer Customer to Remove
----------------------------------	--

Drawn by: C JEWISS
scale: 1:1 at A3
Issue No: 01
Date: JANUARY 2019



LARGE 27mm STAFF BEAD

SECTION THROUGH CILL
SCALE 1:1

Notes:

The Sash Window Workshop
4 Kiln Lane, Bracknell,
Berks RG12 1NA
tel: +44 (0)1344 868668
fax: +44 (0)1344 868858
email: jewiss@sashwindow.com

ITEM 1 & 2