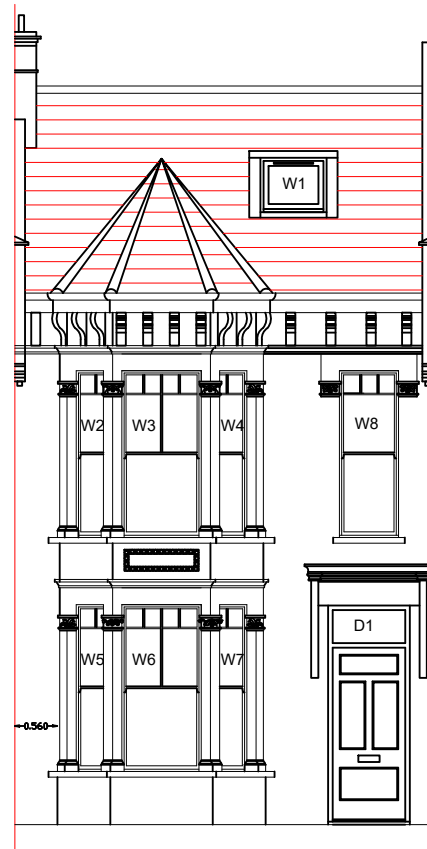


PROPOSED ARE TIMBER SLIMLITE DOUBLE GLAZED WINDOWS IN A LIKE FOR LIKE STYLE TO MATCH EXISTING

PROPOSED ARE TIMBER SLIMLITE DOUBLE GLAZED WINDOWS IN A LIKE FOR LIKE STYLE TO MATCH EXISTING

PROPOSED ARE TIMBER SLIMLITE DOUBLE GLAZED WINDOWS IN A LIKE FOR LIKE STYLE TO MATCH EXISTING

It is proposed that the existing timber single glazed windows are replaced with slimlite double glazed timber windows in a like for like style to match the existing.



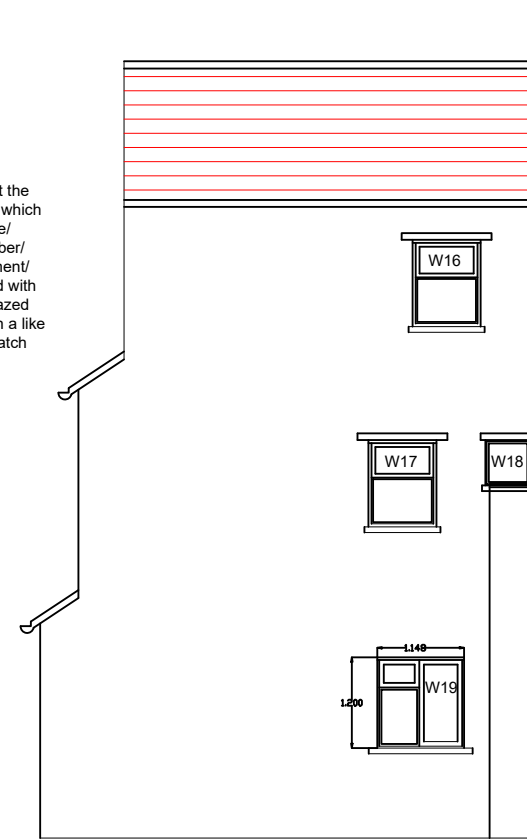
FRONT ELEVATION
(Proposed)

It is proposed that the existing timber single glazed windows are replaced with slimlite double glazed timber windows in a like for like style to match the existing.
PROPOSALS:
 The proposals are for replacement of the existing timber windows at the front, rear and side of the property.
 The proposed windows are timber like for like double glazed Slim-lite units to current building regulations as per attached details.
 The fenestration will be followed to the front, side and rear elevation.



REAR ELEVATION
(Proposed)

It is proposed that the existing windows which are a mix of single/double glaze, timber/UPVC and casement/sash are replaced with slimlite double glazed timber windows in a like for like style to match the existing.

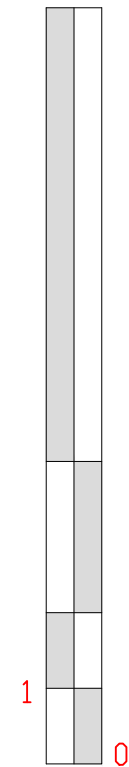


SIDE ELEVATION
(Proposed)

It is proposed that the existing windows which are a mix of single/double glaze, timber/UPVC and casement/sash are replaced with slimlite double glazed timber windows in a like for like style to match the existing.

Notes:

10 Meter



1:100



walker
CONSTRUCTION CONSULTANTS

EMPLOYER'S AGENTS & PROJECT MANAGERS
 UNIT A COURT HOUSE, 11A HIGH STREET
 BARNET EN5 5UJ
 TEL: 020 8446 5537
 E-MAIL: Planning@walkercc.co.uk

TITLE
 PROPOSED ELEVATIONS

PROJECT
 32 Holmdale Road

CLIENT
 GENESIS HOUSING ASSOCIATION / KIER

SCALE: AS IDENTIFIED
 CAD FILE: -
 DATE: 31.10.2018
 DRAWN BY: MSR
 CHECKED:

PROJECT NO.	DRAWING NO.	REVISION
4260	4260/WM/02	2