

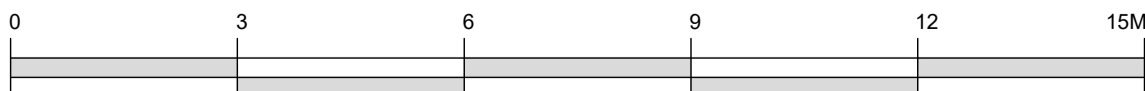


PROPOSED SOUTH ELEVATION

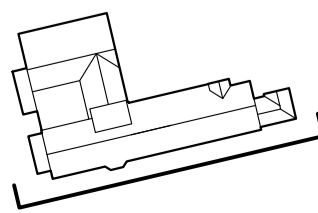


EXISTING SOUTH ELEVATION

Revisions						Revisions					
Rev	Date	By	Description	Checked	Approved	Rev	Date	By	Description	Checked	Approved
P1	18.01.17	ABF	DS&T Preliminary Issue	LP	RH						
P2	05.04.18	RB	Rationalised dormers, extensions & bat boxes	JM	RH						
P3	20.08.18	RB	Planning Amendments	JM	RH						
P4	22.10.18	TS	East Extension Amendments	JM	RH						
P5	28.11.18	RB	Bat and Bird Box Amendments	JM	RH						



For electrical services (inc. lighting and cctv) refer to MEP engineer drawings
For finishes refer to 289_1_2_Planning Facing Materials_1128L



Client		Architect / Originator		Do not scale. All dimensions to be checked on site. This drawing is copyright.	
Platinum Land		Tate Harmer		Unit G182, Stamford Works, 3 Gilett Street, London N16 8JH Tel: +44 (0)207 241 7481 Email: studio@tateharmer.com	
Belsize Park Firestation		Date of Origin		28.11.17	
Proposed and Existing South Elevation		Scale		1:100	
Drawing Number		BFS		P5	
Client Sign Off		Drawing Status		Planning	