

KEY:

Existing structure

Rev	Issued	Status & Description	Drawn / Checked
-	07.02.19	Issued for Planning	SS / TB

Notes:

All dimensions to be checked on site prior to construction or fabrication of any element. Any discrepancies between figure dimensions reported to Architect for clarification prior to commencing work.

This drawing is to be read in conjunction with all consultants information.

Elements of services are indicated for coordination purposes. For full services layouts refer to Services Engineer's drawings and specification.

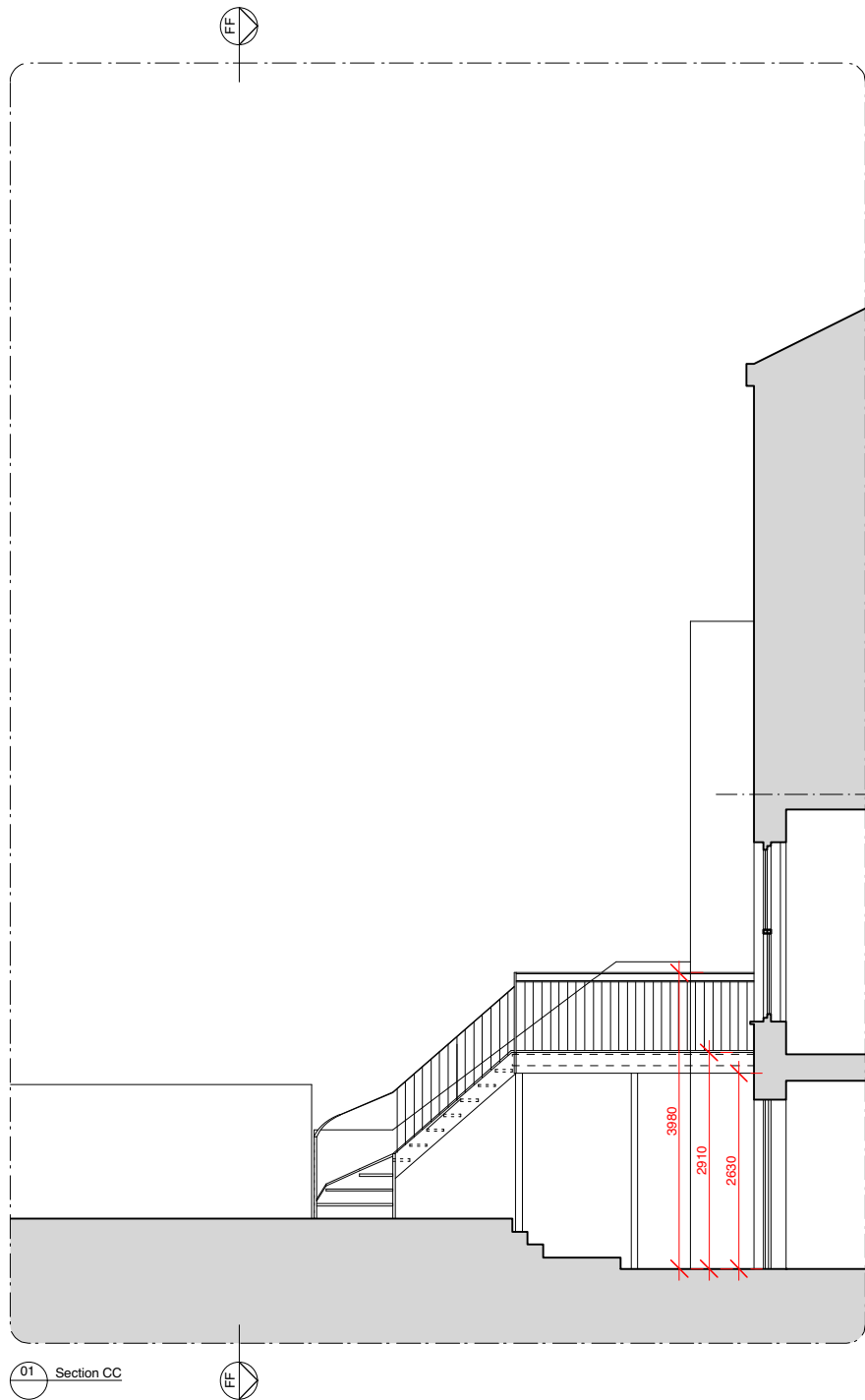
Elements of stucture are indicated for coordination purposes. For full structural layouts refer to Structural Engineer's drawings and specification.

(C) Trevor Brown Architect Ltd. All rights described in chapter IV of the Copyright Designs and Patents Act 1988 have been asserted.

tba

Job
Caversham Road
Address
68a Caversham Road NW5 2DS
Status
Planning
Drawing title
Proposed Plans
Scale
1:100@A3
Drawing number
134_1001 -
Revision

Trevor Brown Architect Ltd.
www.trevorbrownarchitect.co.uk
+44 (0) 20 8826 1486
Suite 315, Ashley House, 235-239 High Road, London. N22 8HF



KEY:

Existing structure

Rev	Issued	Status & Description	Drawn / Checked
-	07.02.19	Issued for Planning	SS / TB

Notes:

All dimensions to be checked on site prior to construction or fabrication of any element. Any discrepancies between figure dimensions reported to Architect for clarification prior to commencing work.

This drawing is to be read in conjunction with all consultants information.

Elements of services are indicated for coordination purposes. For full services layouts refer to Services Engineer's drawings and specification.

Elements of structure are indicated for coordination purposes. For full structural layouts refer to Structural Engineer's drawings and specification.

(C) Trevor Brown Architect Ltd. All rights described in chapter IV of the Copyright Designs and Patents Act 1988 have been asserted.

tba

Job
Caversham Road

Address
68a Caversham Road NW5 2DS

Status
Planning

Drawing title
Proposed Sections CC & FF

Scale
1:100@A3

Drawing number
134_1100

Revision
-

Trevor Brown Architect Ltd.
www.trevorbrownarchitect.co.uk
+44 (0) 20 8826 1486
Suite 315, Ashley House, 235-239 High Road, London. N22 8HF