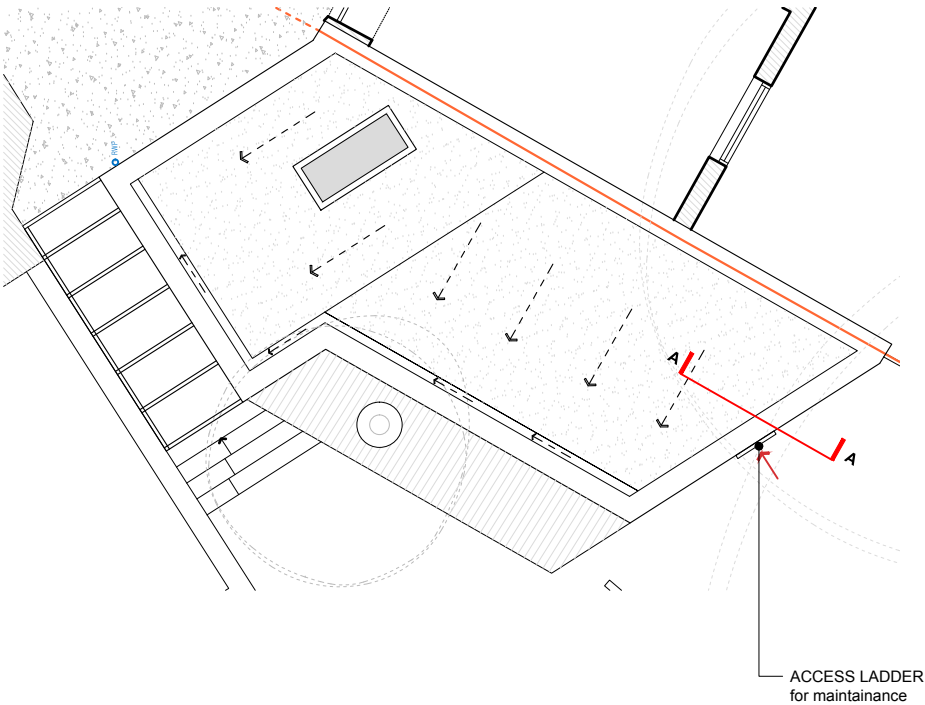


DETAIL 1 - SECTION AA  
SCALE 1:5 @ A3

0 50 100 200 mm



REFERENCE PLAN  
SCALE 1:100 @ A3

0 1 2 4 m

## NOTES

### ROOF BUILD-UP 01

90mm	GREEN ROOF TILES
-	Spec GrufTiles byANS Global
160mm	SINGLE PLY MEMBRANE
18mm	TAPERED PIR INSULATION BOARDS
	STRUCTURAL PLYWOOD BOARD
	Allow for high density WBS marine plywood FSC certified
150x50 mm	JOISTS 175mmX50mm
-	with 100mm RIGID INSULATION in between
	BEATHABLE MEBRANE
	Dupont Tyvek Supro Plus
15mm	PLASTERBOARD
15mm	PLASTERBOARD
	Skimmed and decorated

### GREEN ROOF

#### Key Facts

Low maintenance  
Compressive strength 2000 Kg/m<sup>2</sup>  
Water holding capacity of 20 litres/m<sup>2</sup>  
UV resistant  
Temperature range 50°C - 80°C  
Carrier material 100% Regenerated Polypropylene (PP)  
Carrier measures 540 x 540 x 90mm  
Drainage Surface 318 cm<sup>2</sup>/m<sup>2</sup>  
Outflow Volume 40 l/m<sup>2</sup>  
Saturated weight 65kg/m<sup>2</sup>  
10 year guarantee

#### The Sedum GrufeTile Explained:

Vegetation: Consists of a mix of 8-12 varieties of Sedum. Sedum's are low growing evergreen plants that look after themselves in the main.

Soil: The media mix used is a special substrate prepared specifically for the GrufeTile.

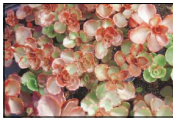
Carrier: Made from recycled HDPE plastic, the carrier performs the following roles – a water reservoir, drainage layer, protection from excessive drying of roots from the airspace below, the cups greatly improve product handling making it easier to install.

Installation: The GrufeTile is equipped with a double-action coupling system: the tabs on the side of each part engage the edge in the gaps between tabs of the facing part.

#### Sedum Species



1. Sedum acre



2. Sedum spurium fuldaglut



3. Sedum floriferum



4. Sedum hybridum himmergrunchen



5. Sedum reflexum



6. Sedum album murale



7. Sedum album coral carpet



8. Sedum kamschaticum



9. Sedum lydium



10. Sedum hispanicum minus

C L A R K E  
P E N M A N

UNIT 11 OLD DAIRY COURT  
17 CROUCH HILL  
LONDON N4 4AP  
0207 263 7121

Project Nicholas Field & Catherine Marsh  
12 Clorane Garden  
London, NW3 7PR

Project No.  
6256

Date FEB 2019  
Scale / Format 1:5 @ A3

Drawing No.  
6256\_03\_500

Drawing Name PROPOSED GREEN ROOF DETAIL  
Revision -

PLANNING