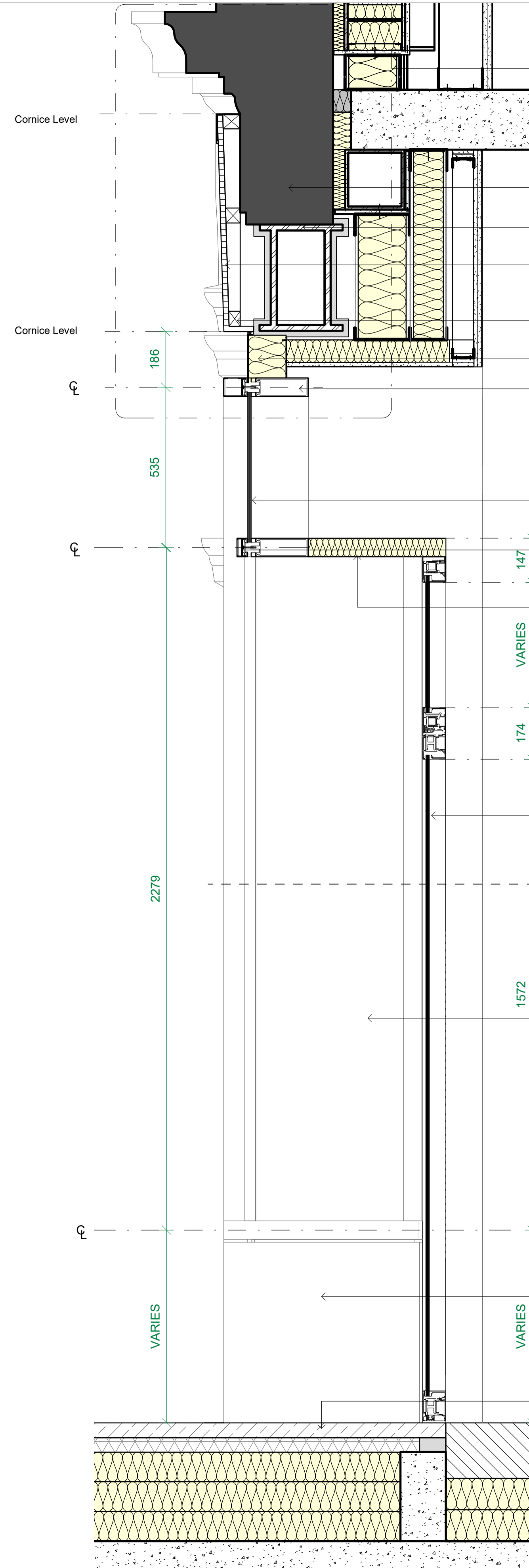


- Retained facade
- Retained facade - existing steel beam
- Hardwood fascia board for future signage - painted grey, RAL 7016
- Framing for hardwood boarding
- Insulated closer flashing - black, RAL 9005
- Brass faced aluminium curtain walling mullion
- Single glazing panel
- Brass faced aluminium curtain walling mullion
- Single glazing panel
- Black granite stall riser - polished finish

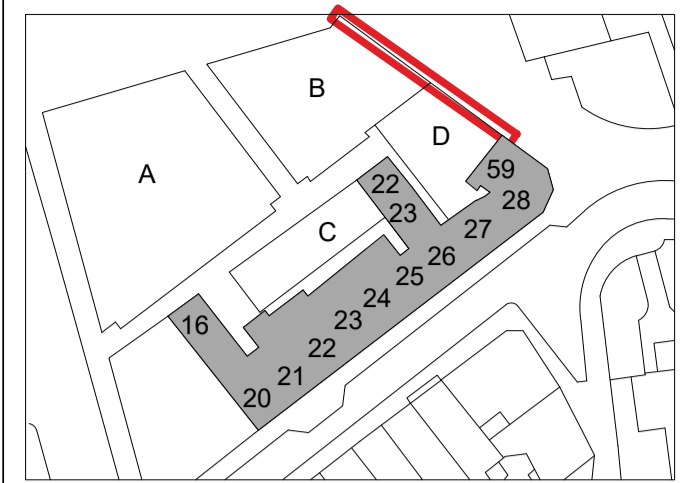


- Retained facade
- Retained facade - existing steel beam
- Hardwood fascia board for future signage - painted grey, RAL 7016
- Framing for hardwood boarding
- Insulated closer flashing - black, RAL 9005
- Brass faced aluminium curtain walling mullion
- Single glazing panel
- Brass faced aluminium curtain walling mullion
- Brass soffit
- Solid brass door
- Single glazing panel
- Black granite stall riser - polished finish
- External paving

1 St Giles High Street - Level 00 - Typical Shopfront - Section through Window
Scale: 1 : 10

2 St Giles High Street - Level 00 - Typical Shopfront - Section through Door
Scale: 1 : 10

Key Plan:



CDM:



Refer to the Risk Register for more information.

Project: **St Giles Circus**

Project Number: **1793**

Drawing Title:
St Giles High Street - Typical Shopfront Sections

Drawing No.
1793_1_PL(SGHS)003

Scale@A1: **1 : 10**

Issued for: **PL - PLANNING**

Revision:
P01 06.02.19 Planning Issue

Orms

1 Oliver's Yard
55-71 City Road
London
EC1Y 1HQ
0207 833 8533
orms@orms.co.uk
orms.co.uk

Do not scale. All dimensions to be confirmed on site. Information contained in this drawing is the sole copyright of Orms designers + architects ltd and is not to be reproduced without permission.