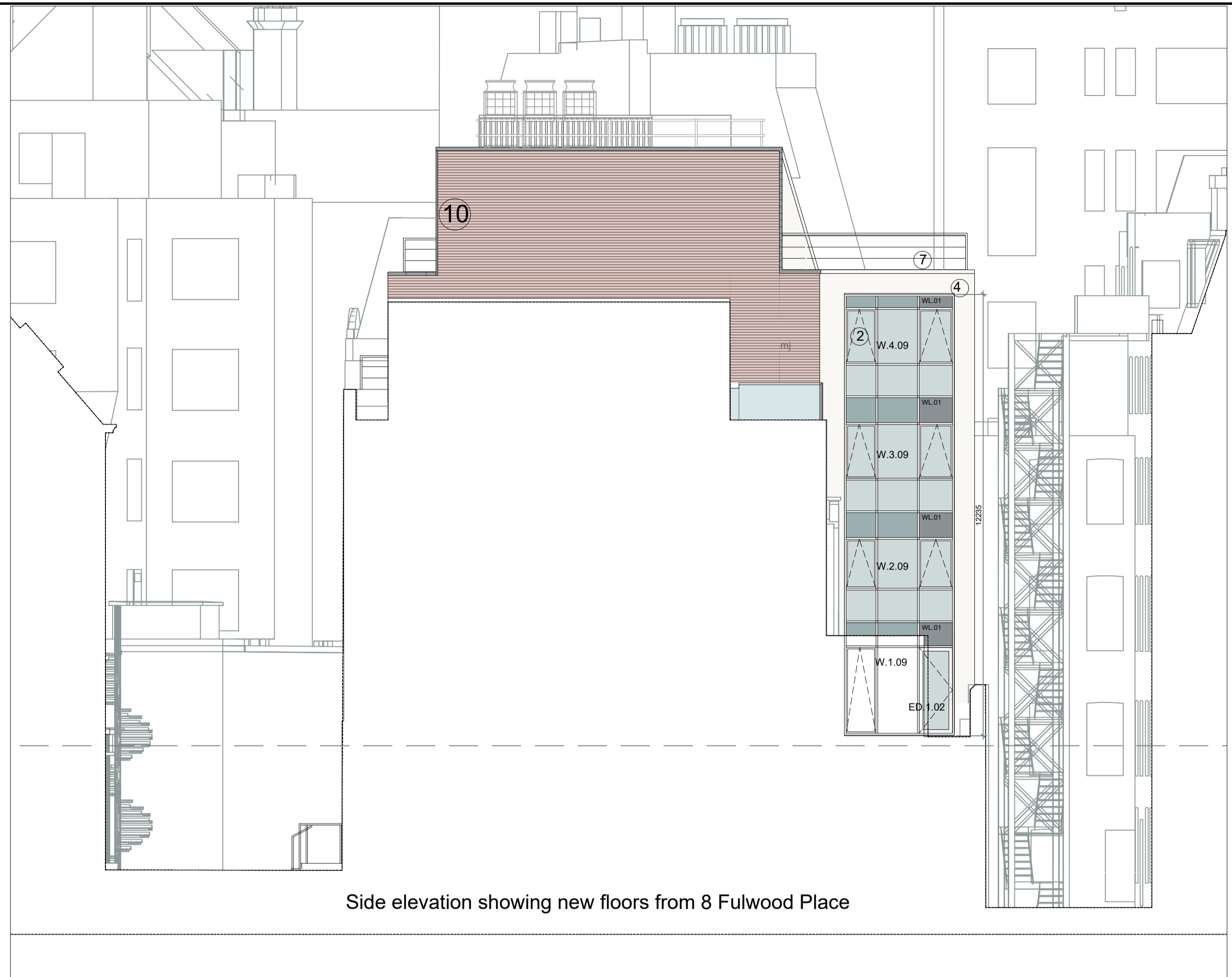
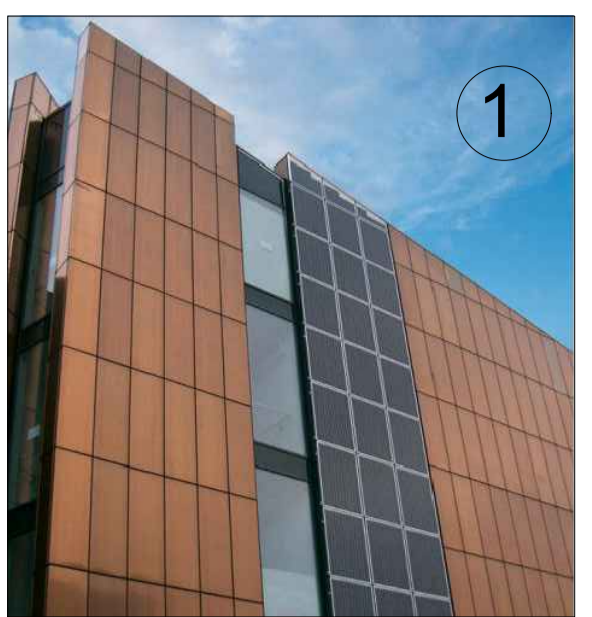
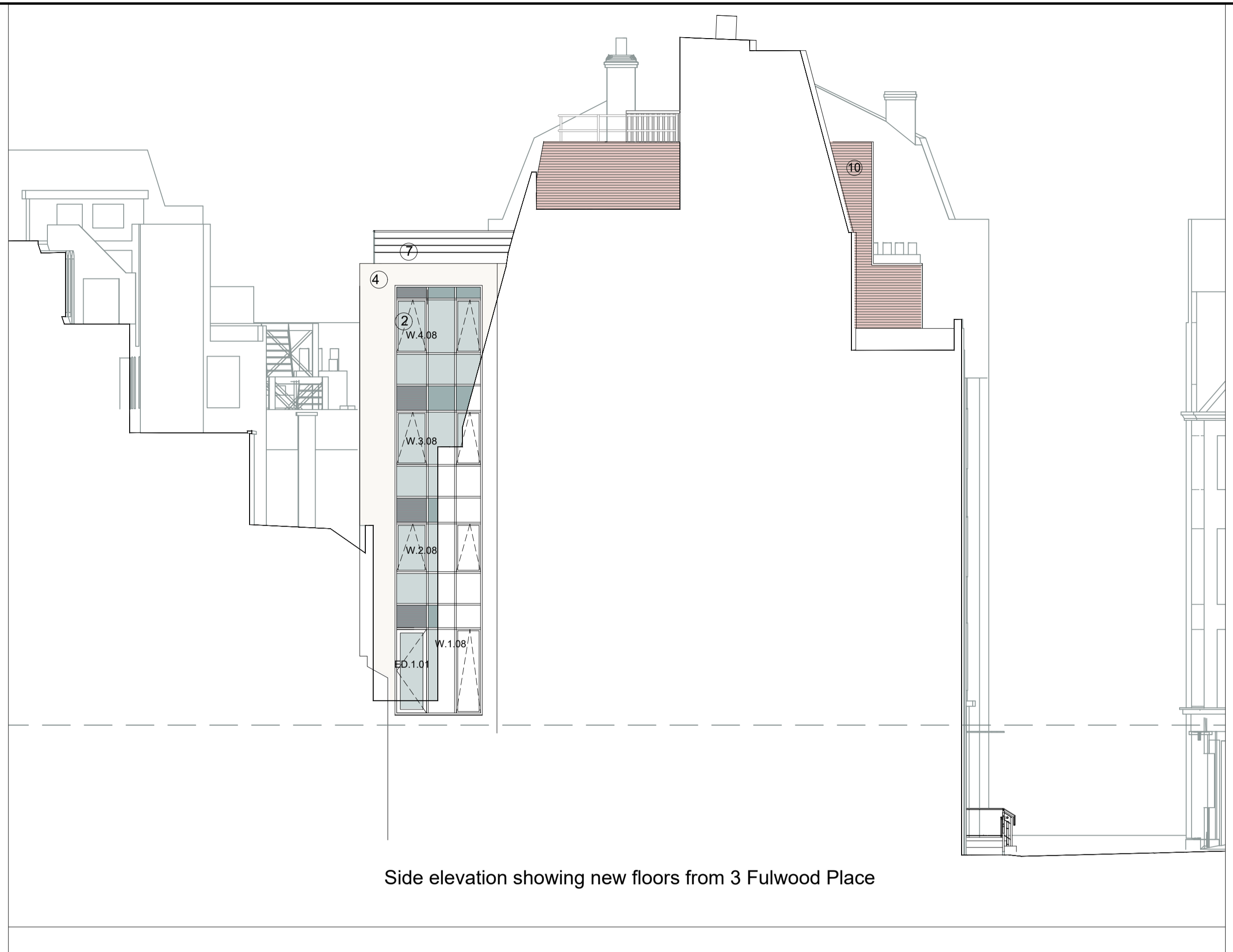


This drawing is copyright and may not be reproduced without the permission of gcp Chartered Architects Ltd. All drawings to be read in conjunction with the project specification with all works carried out in accordance with the latest British Standards and Codes of practice. Except for the purposes of assessing planning applications, this drawing is not to be scaled, use figures dimensions only. All dimensions are to be checked on site and any discrepancies between this drawing and other information given elsewhere must be reported to gcp Chartered Architects before



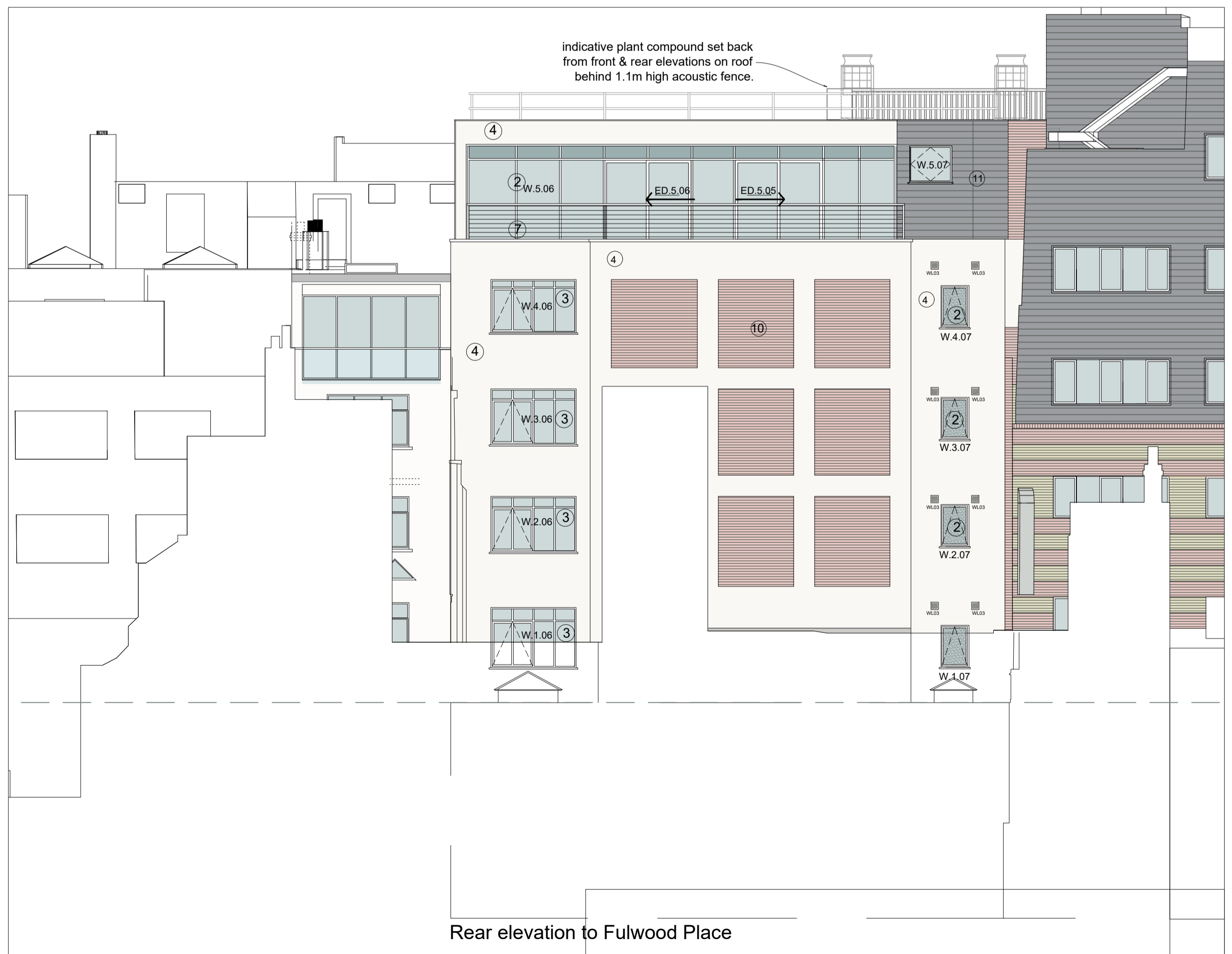
Side elevation showing new floors from 8 Fulwood Place



Side elevation showing new floors from 3 Fulwood Place



Rear elevation to Fulwood Place



Legend

- ① Interlocking vertical Bronze cladding.
- ② New grey colour self finish colour coated aluminium framed windows and curtain walling systems, with solar glass and opening lights, including doors at fifth floor level to access terrace areas
- ③ Replacement double glazed aluminium framed windows to front elevation onto Fulwood Place and rear elevation in grey colour coated factory finish
- ④ Proprietary self finish through colour thin coat render system on insulation to rear elevation - colour white
- ⑤ Automated sliding double glazed aluminium framed doors
- ⑥ Remodelled entrance ramp and steps with structural glass balustrade system with stainless steel handrailing - see drawing Z20 for details
- ⑦ Stainless steel balustrade to roof terraces - see drawing Z21 for details
- ⑨ Brick slip infill panels. Brick to match existing to front elevation of no. 8 Fulwood Place.
- ⑩ Brick cladding. Brick to match existing on and adjacent to site.
- ⑪ Slate roofing to match neighbouring roof of no. 3 Fulwood Place
- ⑫ Mesh Roller shutter recessed in void over doorway.

Revision	Description	Rev By	Date
K	Amendments to materials on rear elevation & front entrance doors.		19.02.2019
J	Amendments to materials on rear elevation & front entrance doors.		09.01.2019
I	Metal cladding amended to bronze		13.03.2018
H	Mansard removed		06.03.2018
G	Roof extension material amended		16.02.2018
F	Roof extension set back		13.02.2018
E	Rear elevation materials amended		18.12.2017
D	Planning submission		23.10.2017
C	amended front elevation		10.10.2017
B	4th fl set back indicated		31.07.2017
A	Pre-Planning submission		09.06.2017

gcp Chartered Architects
 architecture project management sustainable design
 Suite 10, Cornu 2
 Cornu Office Park
 Crown Way
 Warrley
 Bristol BS30 8FJ
 T: 0117 9670286
 mail@gcparch.co.uk
 www.gcparch.co.uk

Project Title:
Elizabeth House
 4-7 Fulwood Place - London

Drawing Title:
Proposed Elevations and Sections

Drawn By: **TM** Date: **June 2017**
 Checked By: **JPL** Scale: **1:100 @ A1**

Drawing No: **17008/205** Rev: **K**

Status: **PLANNING**