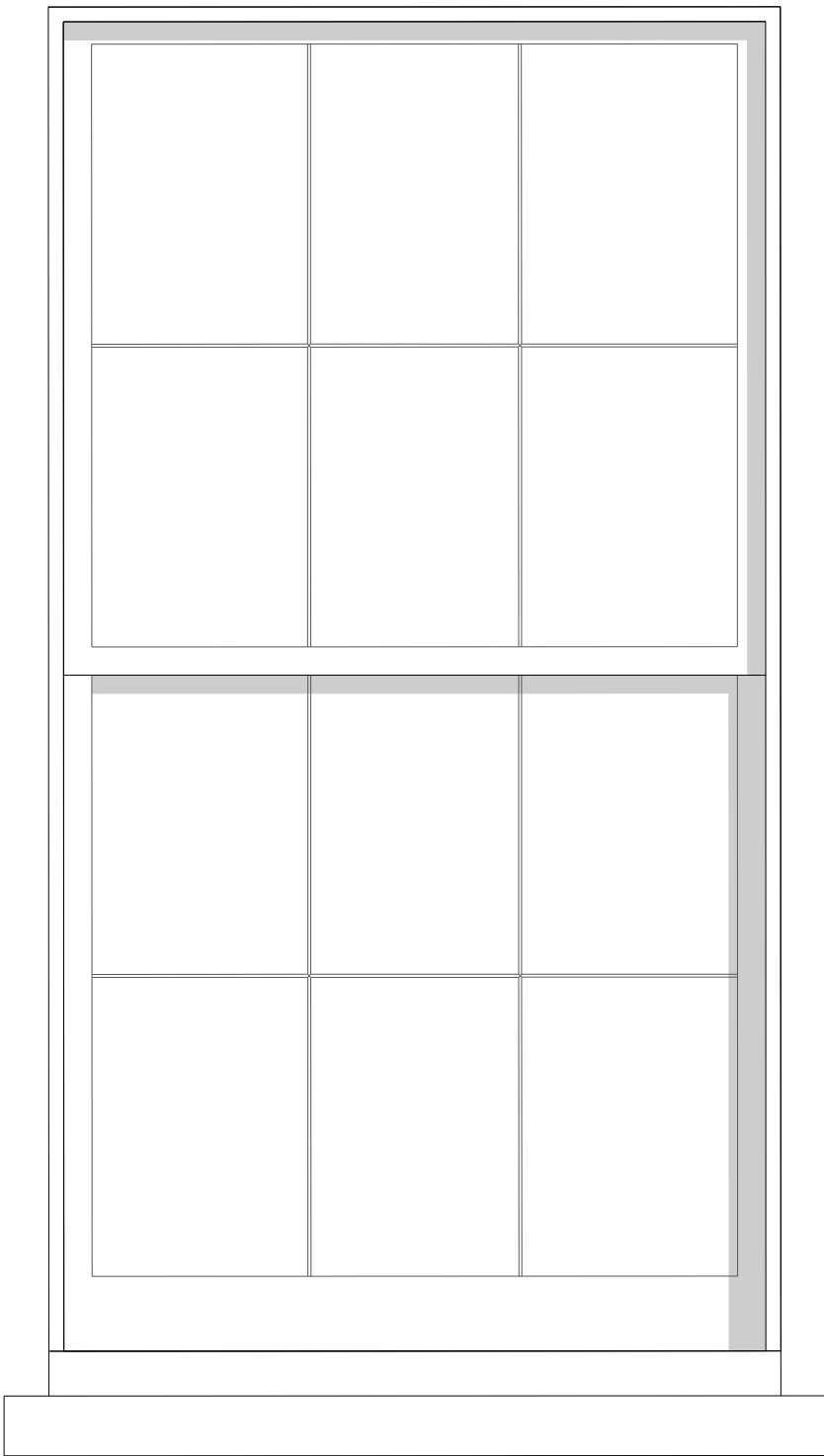
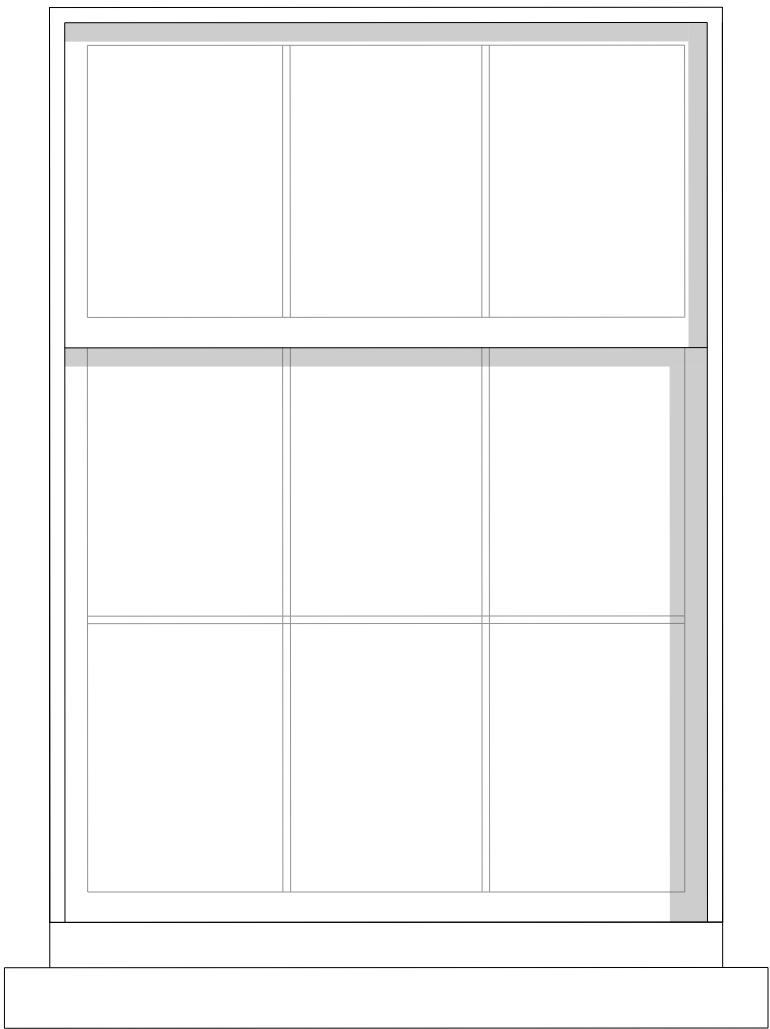
 Works to be carried out by others

TO BE READ IN CONJUNCTION WITH ICA 59 ST GILES HIGH STREET WINDOW SCHEDULE



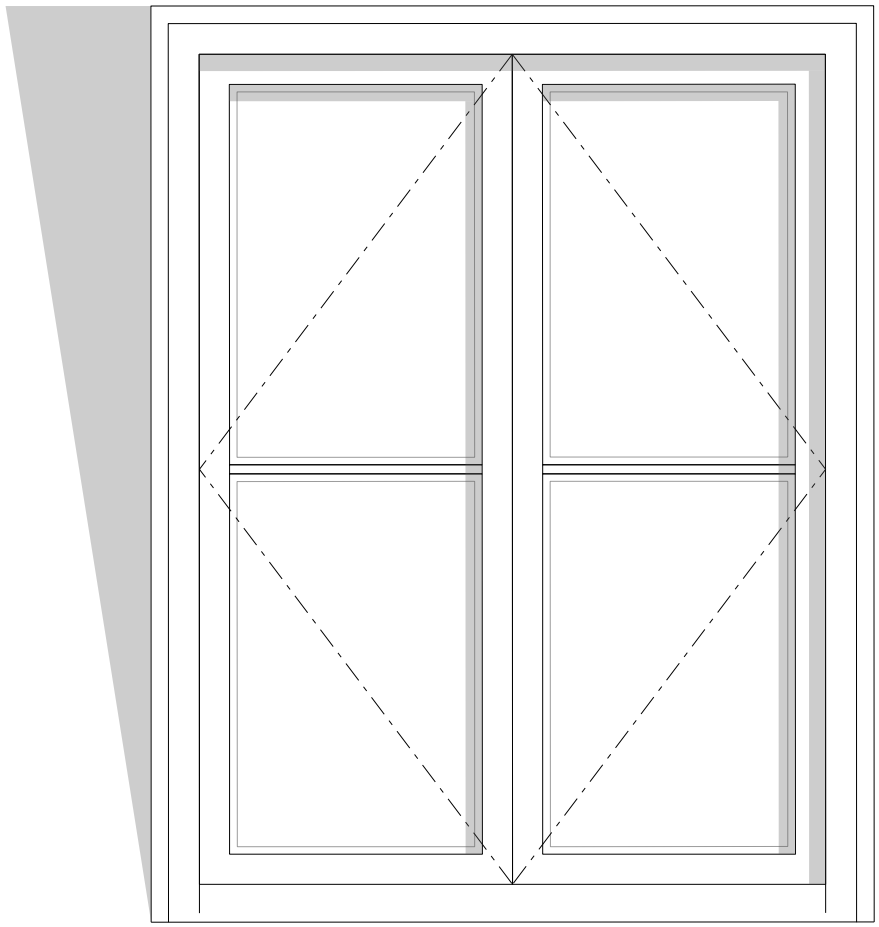
01 59SG_31_01	W_59SG_T1 59 St Giles High Street	1.10
------------------	--------------------------------------	------

59SG Window Type 1 - Six over six panel historic box sash window - Refer to drawing 59SG_31_02 for detail



02 59SG_31_01	W_59SG_T2 59 St Giles High Street	1.10
------------------	--------------------------------------	------

59SG Window Type 2 - Three over six panel historic box sash window - Refer to drawing 59SG_31_02 for detail



03 59SG_31_01	W_59SG_T3 59 St Giles High Street	1.10
------------------	--------------------------------------	------

59SG Window Type 3 - Dormer with outward opening timber casement window with dressed lead hood - Refer to drawing 59SG_31_03 for detail

Revisions

02 Issued for information 15.02.19
01 Issued for information 21.03.18

Client

Consolidated Ltd.

Project

St. Giles Circus - Sections 6 - 8

Drawing Title

59 St. Giles High Street

Proposed

Window Types

Drawing Number

1466_59SG_31_01

Scale	1:10 @ A1	Status	For Information
-------	-----------	--------	-----------------

Drawn by	GW	Date	05/10/2017
----------	----	------	------------

Do not scale. All dimensions to be confirmed on site. Information contained in this drawing is the sole copyright of Ian Chalk Architects and is not to be reproduced without permission.