

2.6 SECTION D

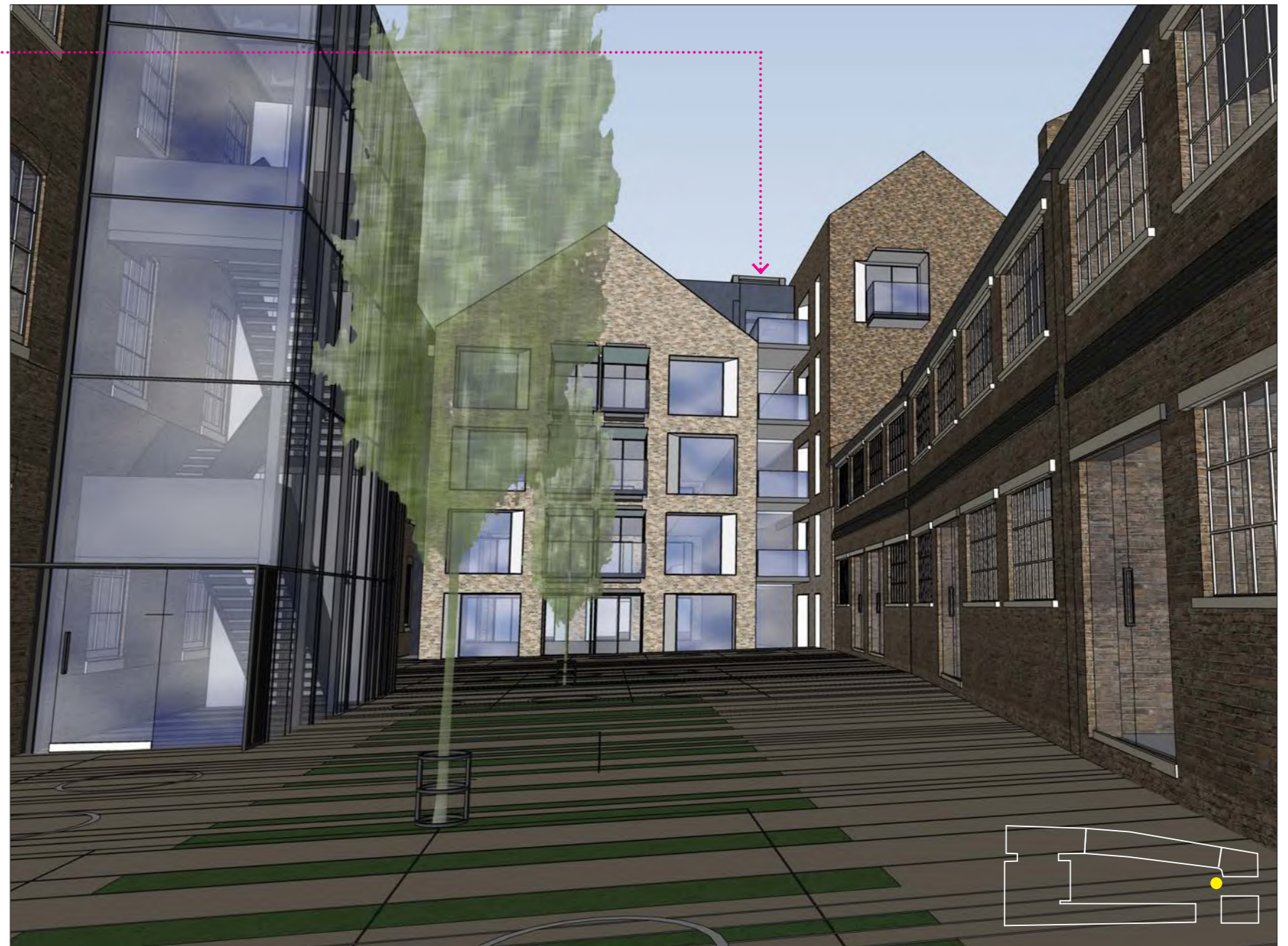
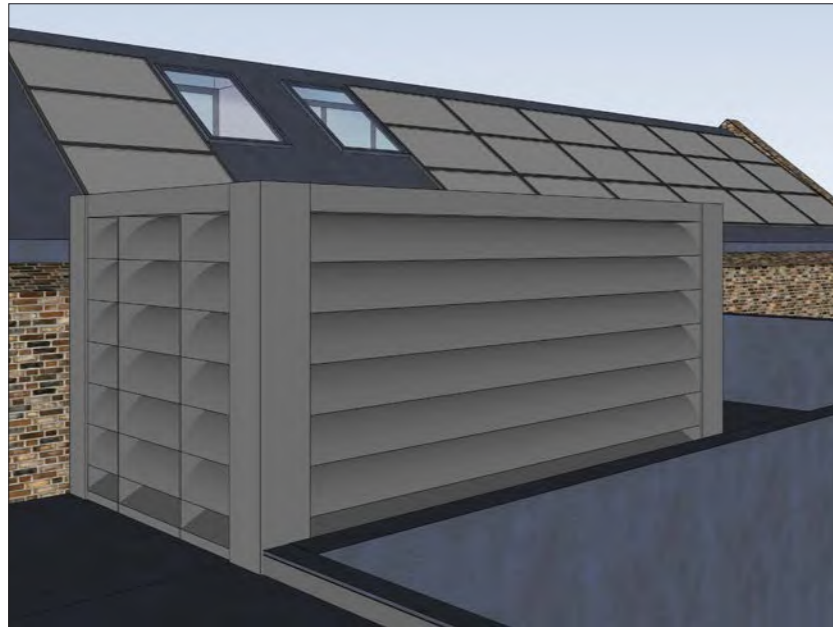


PROPOSED SECTION D 173_PL4_GS_03 REV *

3.0 FURTHER INFORMATION

3.1 Block B Roof Plant Enclosure

3.11 Acoustic Louvre System Views

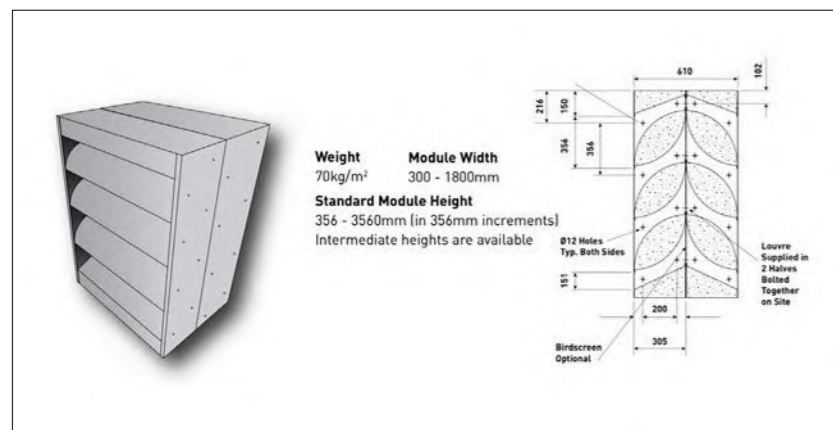


3.1 BLOCK B ROOF PLANT

3.12 Plant Enclosure Manufacturer Details

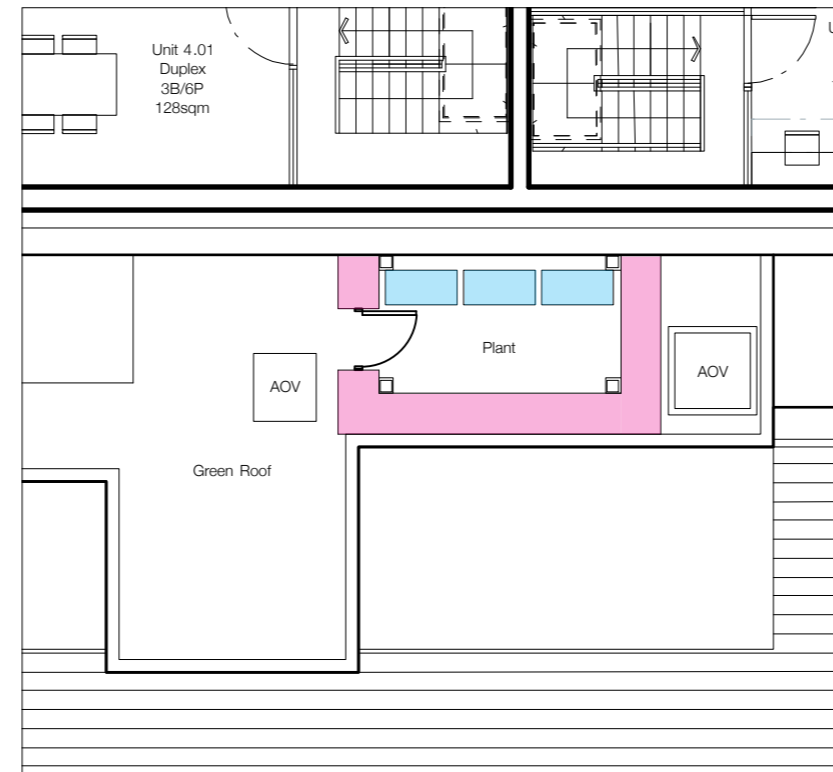


Manufacturer Image of Louvres



Manufacturer 3D/Section of Acoustic Louvre

3.13 Acoustic Louvre System



Level 05 Plan

● Condensers ● Acoustic Louvre

3.14 Plant Commentary

The acoustic engineer, Hann Tucker Associates, have provided acoustic performance criteria for the new plant enclosure, this can be summarised as follows.

"In addition to the above criteria we recommend that the following maximum noise levels are achieved at the Penthouse Balcony".

We have assumed that the condensers will be set to operate at "Low Noise Mode" during the night- time.

We would propose that the condensers are installed within acoustic enclosures.

As such - the louver enclosure shall provide 20dBA reduction of noise levels to the plant equipment.



3.1 BLOCK B ROOF PLANT

3.15 3D VIEWS

1



2



3



4





21ST

ARCHITECTURE LTD
314 Goswell Road
LONDON, EC1V 7AF



+44(0)20 7952 0252
www.21starchitecture.com

