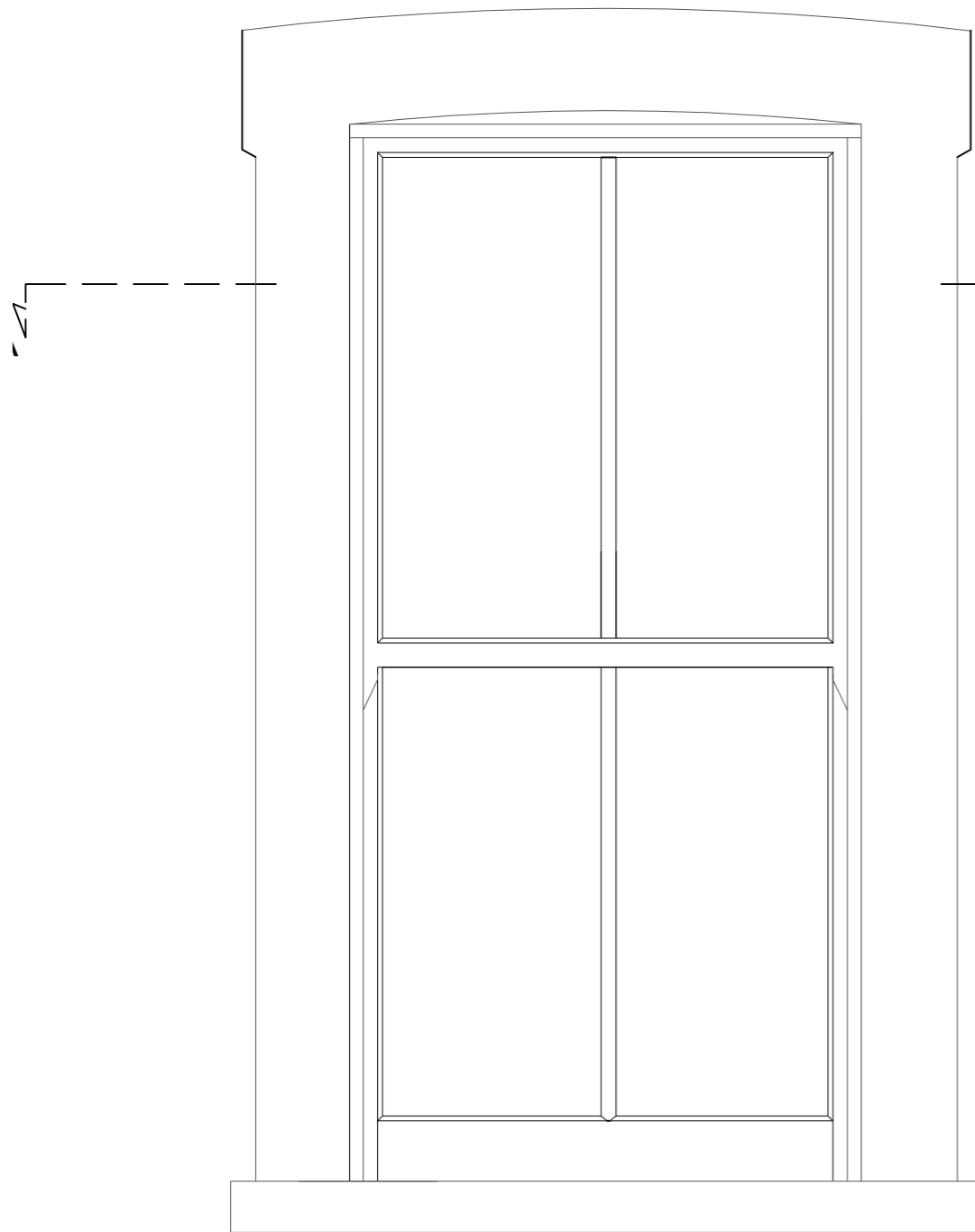


**NEW SASH WINDOWS**

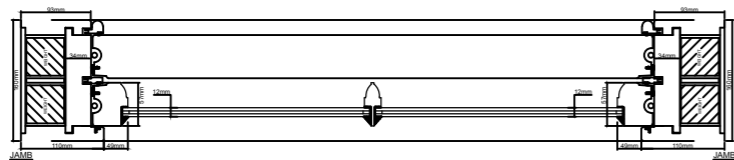
The new/ replacement timber sash windows are to accurately replicate, in terms of material, profile and detailing, the original/ historic timber windows.

They are to be:

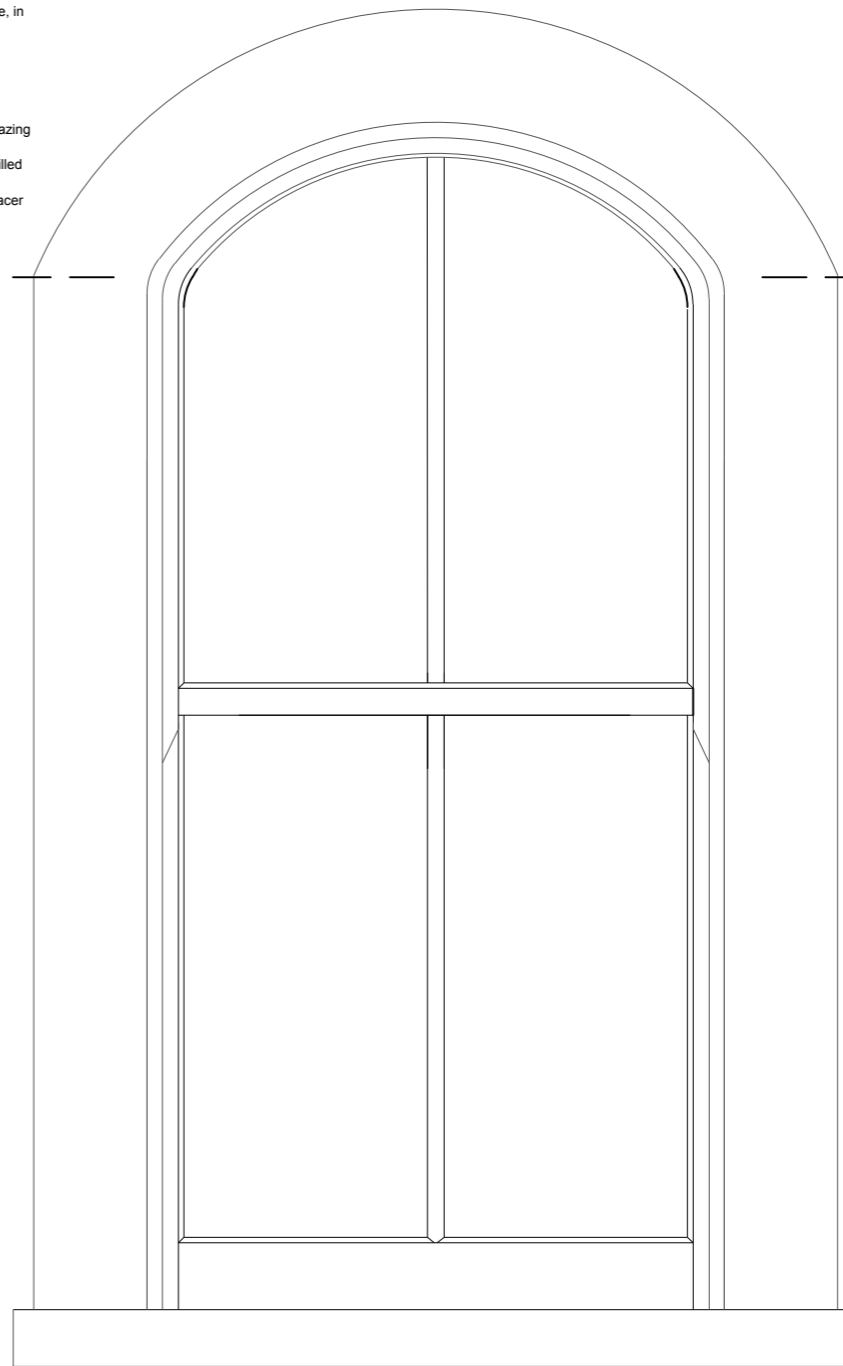
- Painted timber;
  - Double hung sash windows with narrow, integral (not applied) glazing bars with a true putty finish;
  - Glazing to be 12mm in total thickness (4mm glass: 4mm argon filled cavity: 4mm glass);
- There are to be no horns, trickle vents or metallic/ perforated spacer



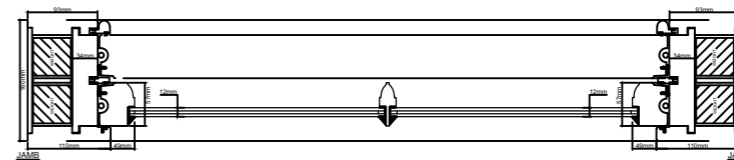
External Elevation of sliding box sash window  
Scale 1:10



Section A - A of sliding box sash window  
Scale 1:10



External Elevation of sliding box sash window  
Scale 1:10



Section A - A of sliding box sash window  
Scale 1:10

